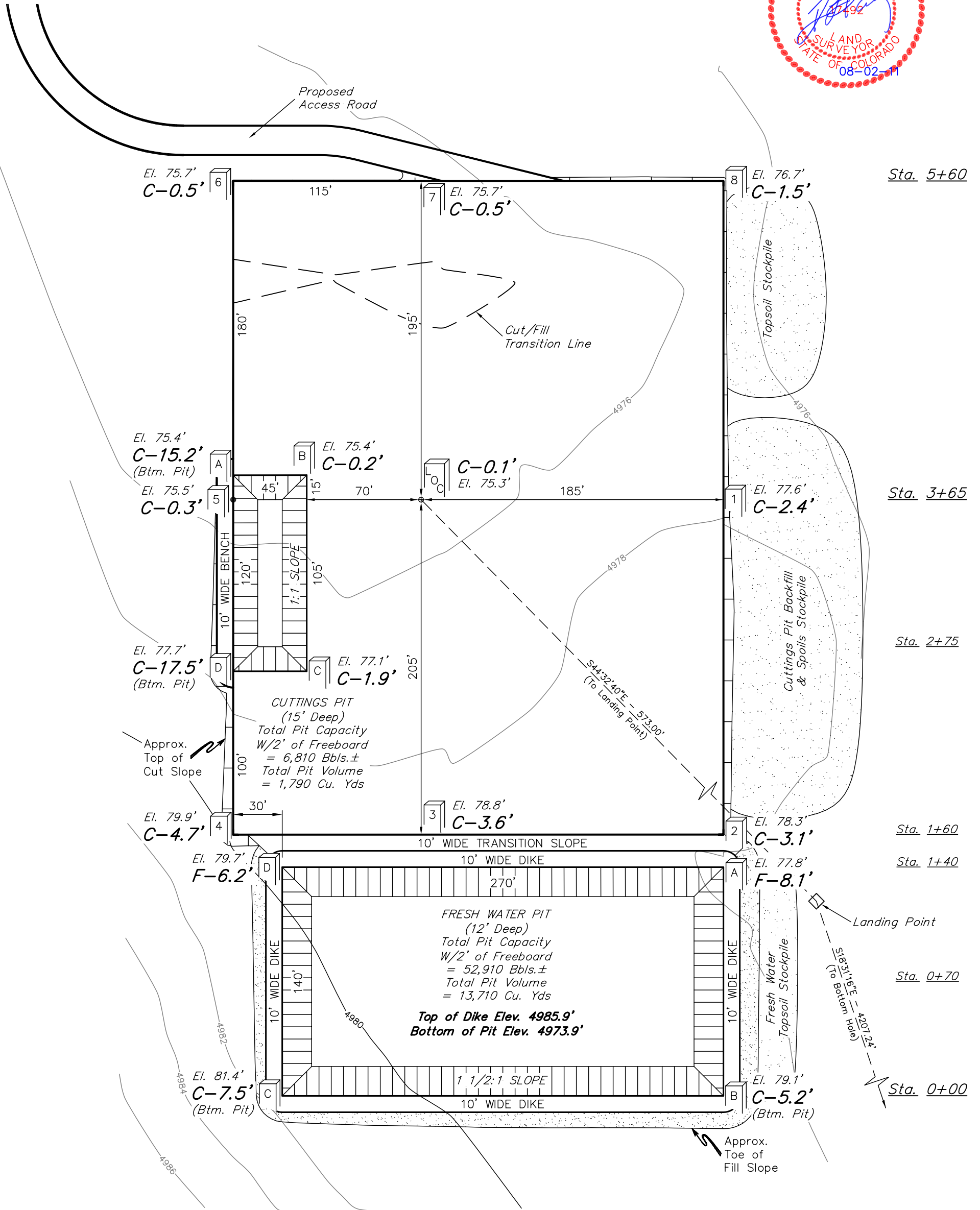


CARRIZO OIL & GAS, INC.  
CONSTRUCTION LAYOUT FOR  
BARRACUDA #29-11-7-60  
SECTION 29, T7N, R60W, 6th. P.M.  
245' FNL 245' FWL

FIGURE #1

SCALE: 1" = 60'  
DATE: 07-13-11  
DRAWN BY: J.I.  
REV.: 08-02-11



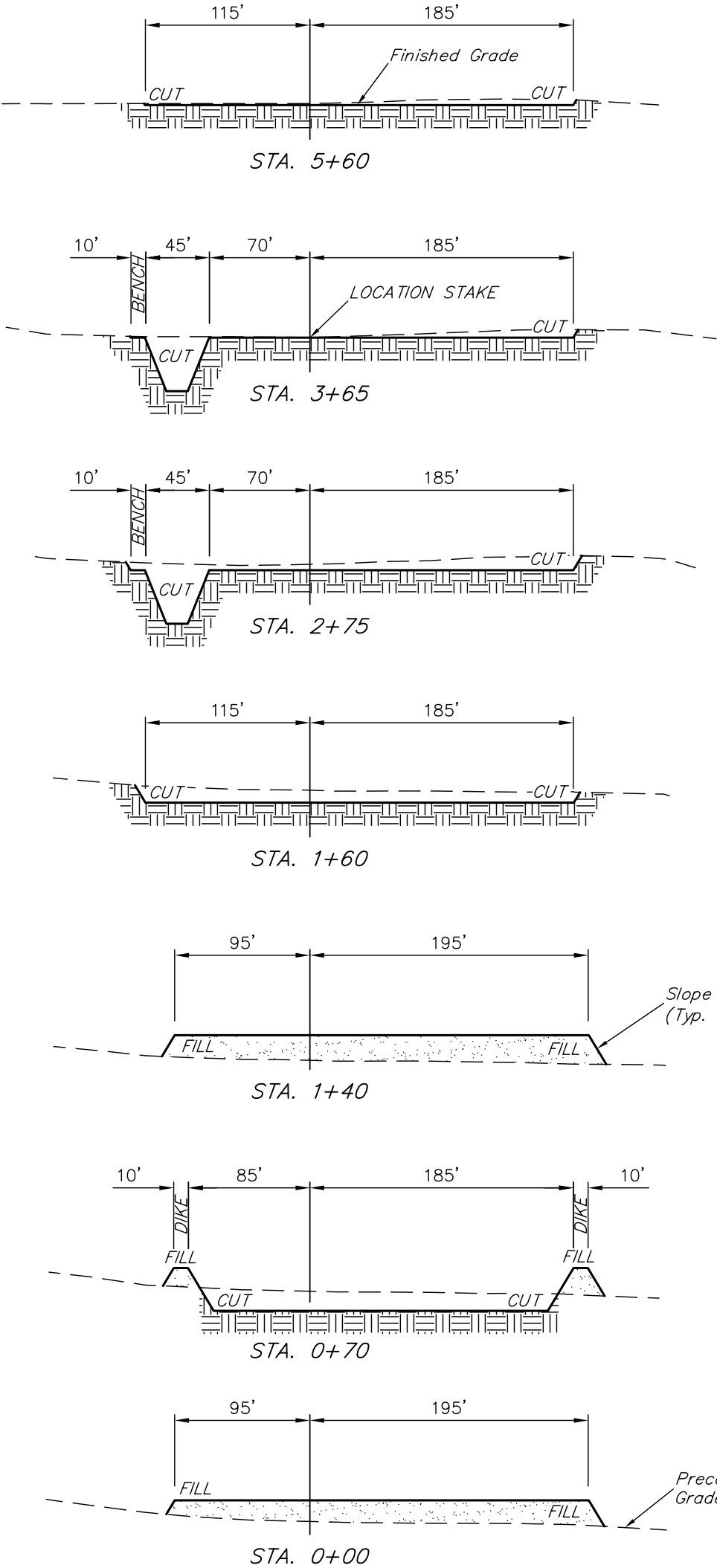
Elev. Ungraded Ground At Loc. Stake = 4975.3'  
FINISHED GRADE ELEV. AT LOC. STAKE = 4975.2'

UINTAH ENGINEERING & LAND SURVEYING  
85 So. 200 East \* Vernal, Utah 84078 \* (435) 789-1017

1" = 40'  
X-Section  
Scale  
1" = 100'  
DATE: 07-13-11  
DRAWN BY: J.I.  
REV.: 08-02-11

CARRIZO OIL & GAS, INC.  
CONSTRUCTION LAYOUT CROSS SECTIONS FOR  
BARRACUDA #29-11-7-60  
SECTION 29, T7N, R60W, 6th. P.M.  
245' FNL 245' FWL

FIGURE #2



APPROXIMATE PAD YARDAGES

(6") Topsoil Stripping	=	2,360 Cu. Yds.
Remaining Location	=	6,760 Cu. Yds.
TOTAL CUT	=	9,120 CU.YDS.
FILL	=	550 CU.YDS.
EXCESS MATERIAL	=	8,570 Cu. Yds.
Topsoil & Pit Backfill	=	3,260 Cu. Yds.
(1/2 Pit Vol.)		
EXCESS UNBALANCE	=	5,310 Cu. Yds.
(After Interim Rehabilitation)		

APPROXIMATE FRESH WATER PIT YARDAGES

(6") Topsoil Stripping	=	1,120 Cu. Yds.
Remaining Location	=	4,840 Cu. Yds.
TOTAL CUT	=	5,960 CU.YDS.
FILL	=	4,840 CU.YDS.
EXCESS MATERIAL	=	1,120 Cu. Yds.
Topsoil	=	1,120 Cu. Yds.
EXCESS UNBALANCE	=	0 Cu. Yds.
(After Interim Rehabilitation)		

NOTE:

Topsoil should not be Stripped Below Finished Grade on Substructure Area.

\* NOTE: FILL QUANTITY INCLUDES 5% FOR COMPACTION

APPROXIMATE ACREAGES  
WELL SITE DISTURBANCE = ± 4.815 ACRES  
ACCESS ROAD DISTURBANCE = ± 3.860 ACRES  
TOTAL = ± 8.675 ACRES

UINTAH ENGINEERING & LAND SURVEYING  
85 So. 200 East \* Vernal, Utah 84078 \* (435) 789-1017

CARRIZO OIL & GAS, INC.  
TYPICAL RIG LAYOUT FOR  
BARRACUDA #29-11-7-60  
SECTION 29, T7N, R60W, 6th. P.M.  
245' FNL 245' FWL

FIGURE #3  
SCALE: 1" = 60'  
DATE: 07-13-11  
DRAWN BY: J.I.  
REV.: 08-02-11

