

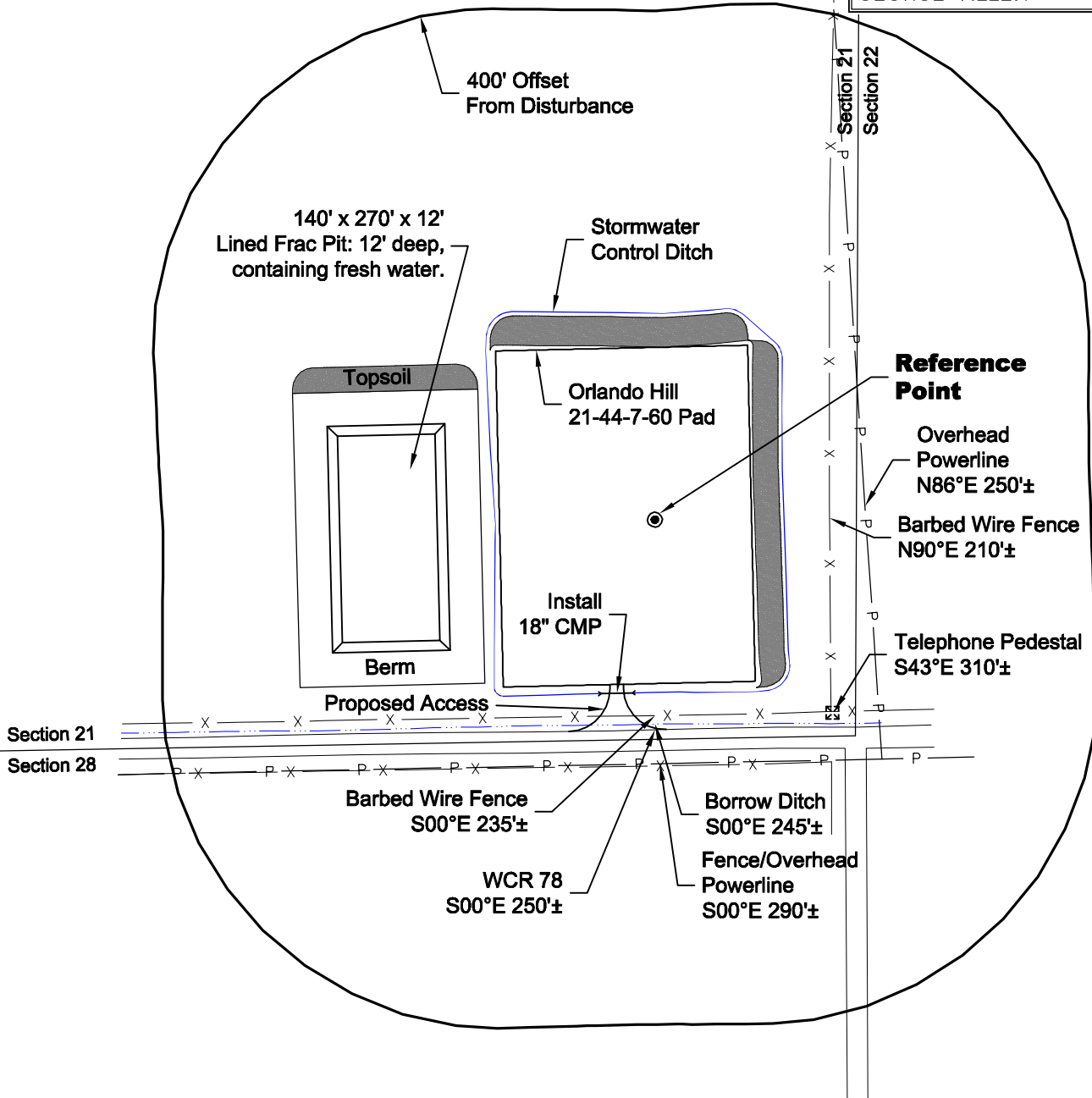
LOCATION DRAWING

VEGETATION:
PASTURE

SURFACE USE:
GRAZING

REFERENCE POINT

LATITUDE: 40.55413
LONGITUDE: -104.09018
FOOTAGE: 261 FSL 240 FEL
GROUND ELEVATION: 4915.2
PDOP: 2.0 DATE: 4/5/2011
INSTRUMENT OPERATOR: GEORGE ALLEN



0 200 400

Graphic Scale in Feet
1 inch = 200 feet

DISTURBANCE ACREAGE:
3.8± DRILLING OPERATIONS
2.0± FRAC PIT
1.0± INTERIM RECLAIM

NOTE:
ALL PRODUCTION FACILITIES WILL BE ON PAD.

4/11/11

GEO SURV

LAND SURVEYING AND MAPPING
LAFAYETTE - WINTER PARK
Ph 303 666 0379 Fx 303 665 6320

CARRIZO OIL & GAS, INC
ORLANDO 21-44-7-60 PAD

SE1/4 SE1/4 SECTION 21 T7N R60W
6th PM WELD COUNTY COLORADO