

CONSTRUCTION LAYOUT DRAWING

1 of 2

VEGETATION:
PASTURE

SURFACE USE:
GRAZING

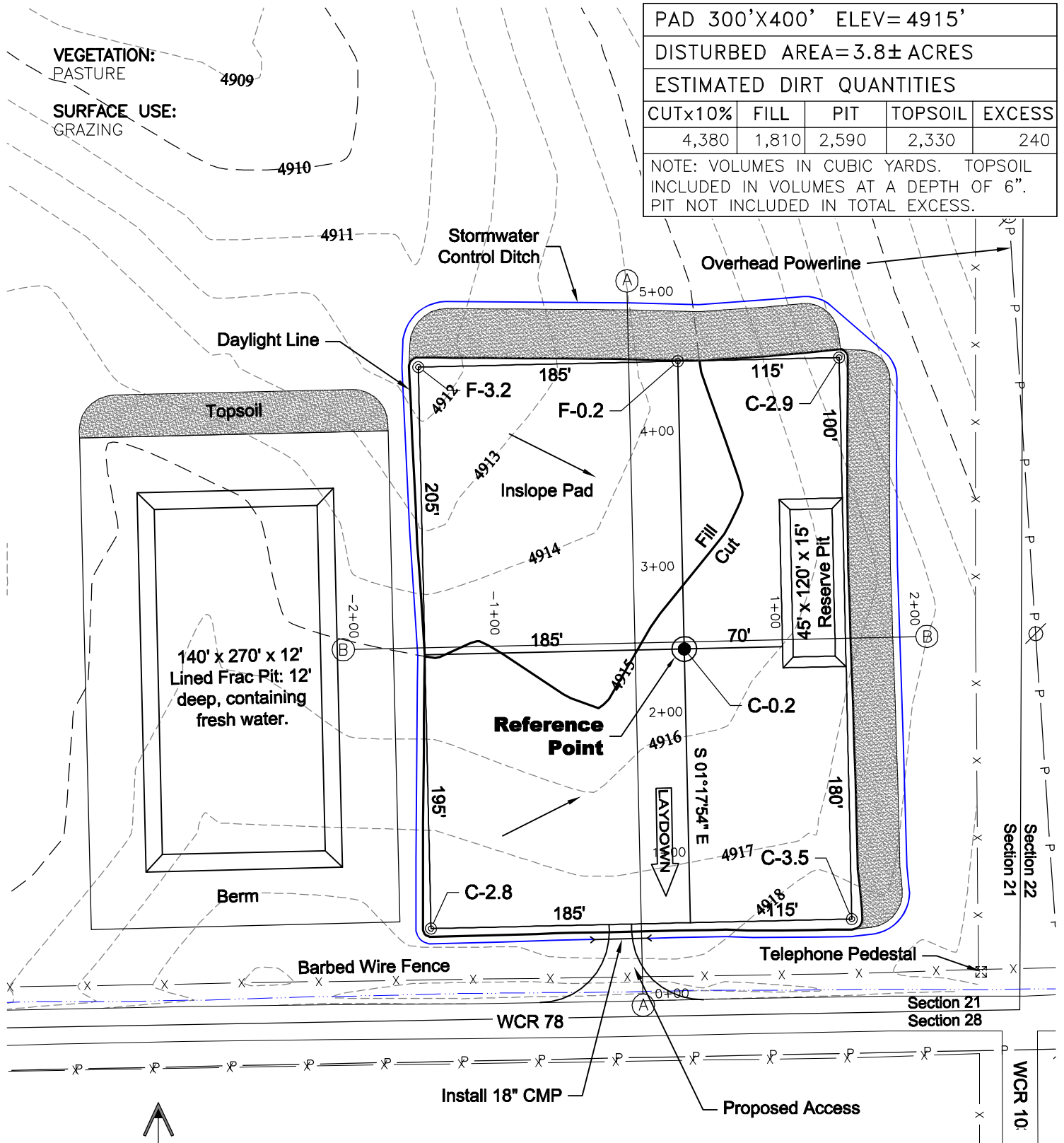
PAD 300'X400' ELEV= 4915'

DISTURBED AREA=3.8± ACRES

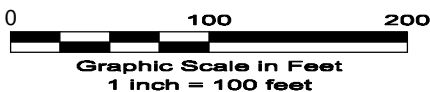
ESTIMATED DIRT QUANTITIES

| CUTx10% | FILL | PIT | TOPSOIL | EXCESS |
|---------|-------|-------|---------|--------|
| 4,380 | 1,810 | 2,590 | 2,330 | 240 |

NOTE: VOLUMES IN CUBIC YARDS. TOPSOIL INCLUDED IN VOLUMES AT A DEPTH OF 6". PIT NOT INCLUDED IN TOTAL EXCESS.



North



4/11/11

NOTE:
10% ALLOWANCE IS MADE FOR SOIL EXPANSION.

GEO SURV

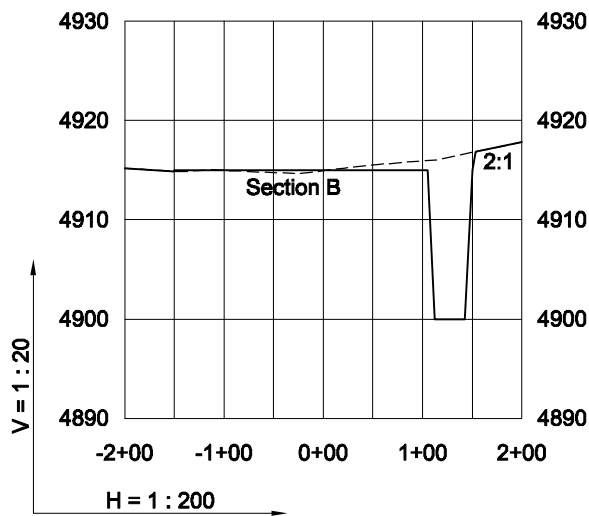
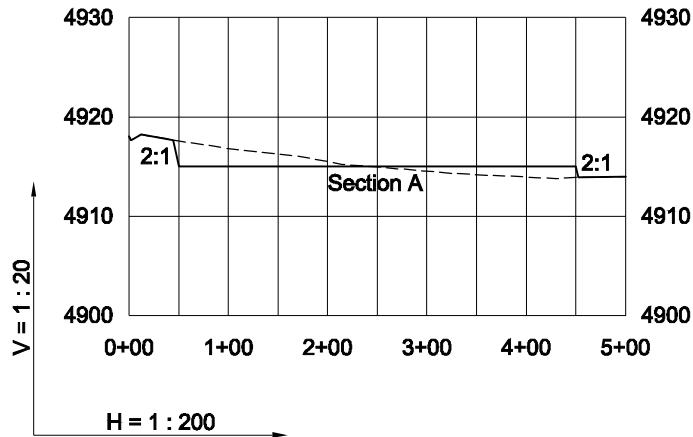
LAND SURVEYING AND MAPPING
LAFAYETTE - WINTER PARK
Ph 303 666 0379 Fx 303 665 6320

CARRIZO OIL & GAS, INC
ORLANDO 21-44-7-60 PAD

SE1/4 SE1/4 SECTION 21 T7N R60W
6th PM WELD COUNTY COLORADO

CONSTRUCTION LAYOUT DRAWING

2 of 2



4/11/11

----- Existing Ground

----- Proposed Grade



LAND SURVEYING AND MAPPING
LAFAYETTE - WINTER PARK
 Ph 303 666 0379 Fx 303 665 6320

CARRIZO OIL & GAS, INC
ORLANDO 21-44-7-60 PAD

SE1/4 SE1/4 SECTION 21 T7N R60W
6th PM WELD COUNTY COLORADO