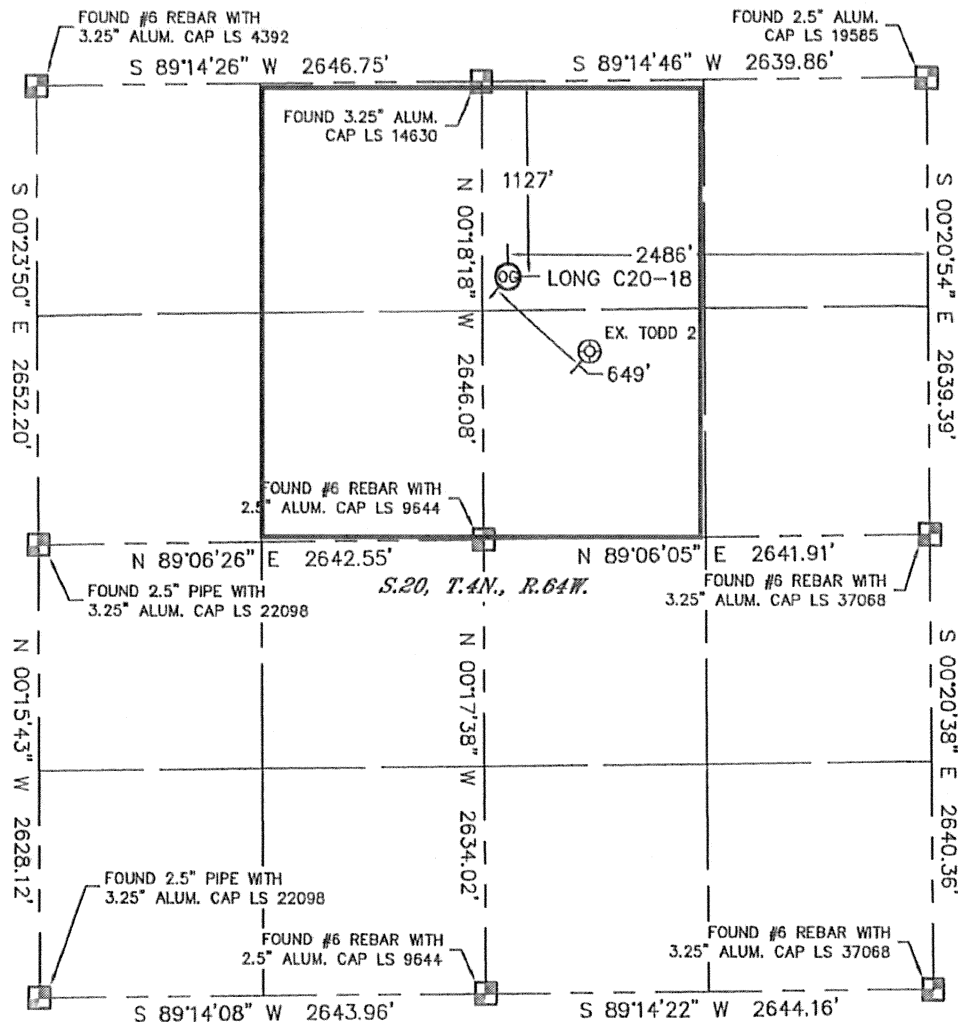


Lat40°, Inc. 1635 Foxtrail Drive, Suite 325 Loveland, CO 970-776-3321

WELL LOCATION CERTIFICATE

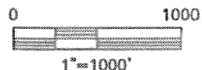
THIS MAP DOES NOT REPRESENT A BOUNDARY SURVEY

SECTION: 20
TOWNSHIP: 4N
RANGE: 64W



In accordance with a request from Brian DeRose with Noble Energy Inc., Lat40°, Inc. has determined the surface location of the LONG C20-18 to be 1127' from the NORTH line and 2486' from the EAST line as measured at right angles from the section lines of Section 20, Township 4 North, Range 64 West of the Sixth Principal Meridian, County of Weld, State of Colorado.

I hereby state that this Well Location Certificate was prepared by me, or under my direct supervision, that the fieldwork was completed on 5/27/11, for and on behalf of Noble Energy Inc.. That this is not a Land Survey Plot or an Improvement Survey Plot, and that it is not to be relied upon for establishment of fence, building, or other future Improvement lines.



NOTE:

- 1) Bearings shown are Grid Bearings of the Colorado State Plane Coordinate System, North Zone, North American Datum 1983/2007. The lineal dimensions as contained herein are based upon the "U.S. Survey Foot."
- 2) Ground elevations are based on an observed GPS elevation (NAVD 1988 DATUM).
- 3) NEAREST EXISTING WELL: TODD 2, 649'
- 4) IMPROVEMENTS: See LOCATION DRAWING for all visible improvements within 400' of disturbed area.
- 5) SURFACE USE: PASTURE
- 6) INSTRUMENT OPERATOR: AARON LUND

NOTE

According to Colorado law, you must commence any legal action based upon any defect in this W.L.C. within three years after you discover such defect. In no event, may any action based upon any defect in this survey be commenced more than ten years after the date of the certificate shown hereon. (13-80-105 C.R.S.)

LEGEND

- = ALIQUOT MONUMENT AS DESCRIBED
○ = CALCULATED POSITION

SURFACE LOCATION

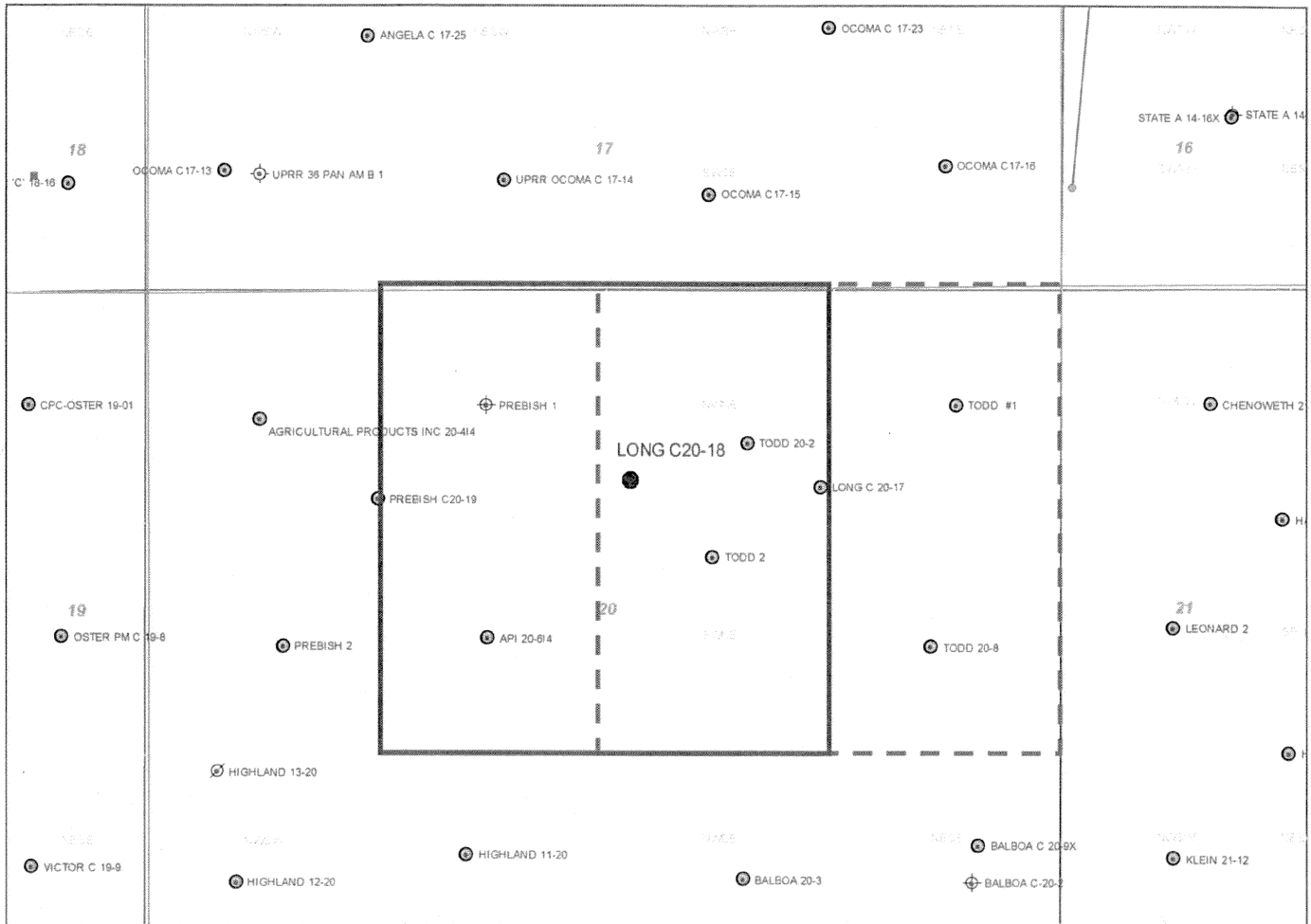
LATITUDE: 40.30207°N
LONGITUDE: 104.57407°W
PDOP: 1.4
ELEV: 4733'
1/4, 1/4: NW1/4NE1/4
NEAREST PROPERTY LINE: 155' WEST



Brian T. Brinkman—On behalf of Lat40°, Inc.
Colorado Licensed Professional
Land Surveyor No. 38175

PROJECT#: 2011130

LONG C20-18
Noble Energy, Inc
NW/4NE/4 Section 20, Township 4 North, Range 64 West



Legend	
<div style="border: 2px solid black; width: 50px; height: 50px; margin-bottom: 10px;"></div> <p>Proposed 160 acre spacing unit</p> <div style="border-top: 1px dashed black; width: 50px; height: 10px; margin-bottom: 10px;"></div> <p>Bottom Hole Located NE/4, Sec. 20, T4N, R64W</p>	<div style="text-align: center; margin-bottom: 20px;"> <div style="width: 15px; height: 15px; background-color: black; border-radius: 50%; display: inline-block; margin-right: 5px;"></div> Bottom Hole Location </div> <div style="text-align: center; margin-top: 20px;"> <p>The governmental ¼ Section has less than 8 bottom hole wells producing from the Codell, Niobrara, and J-Sand formations.</p> </div>