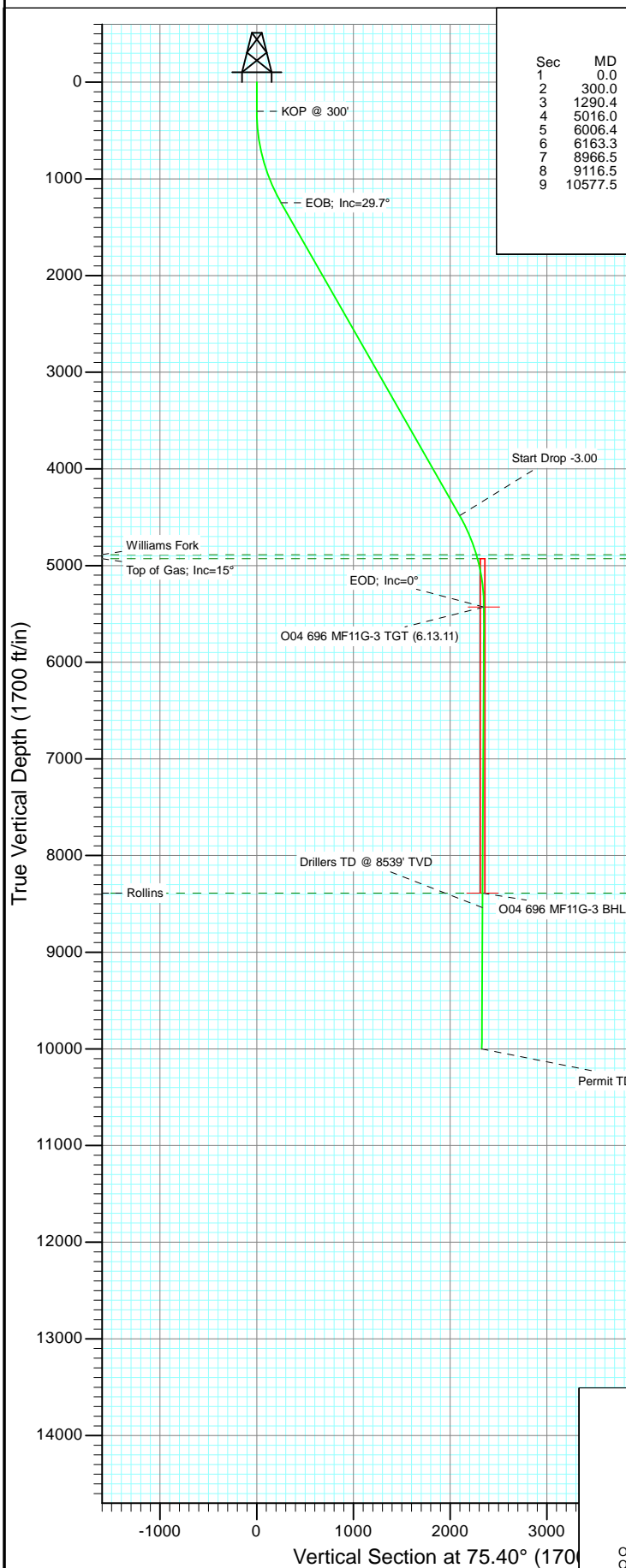
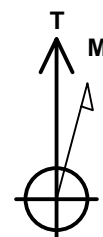
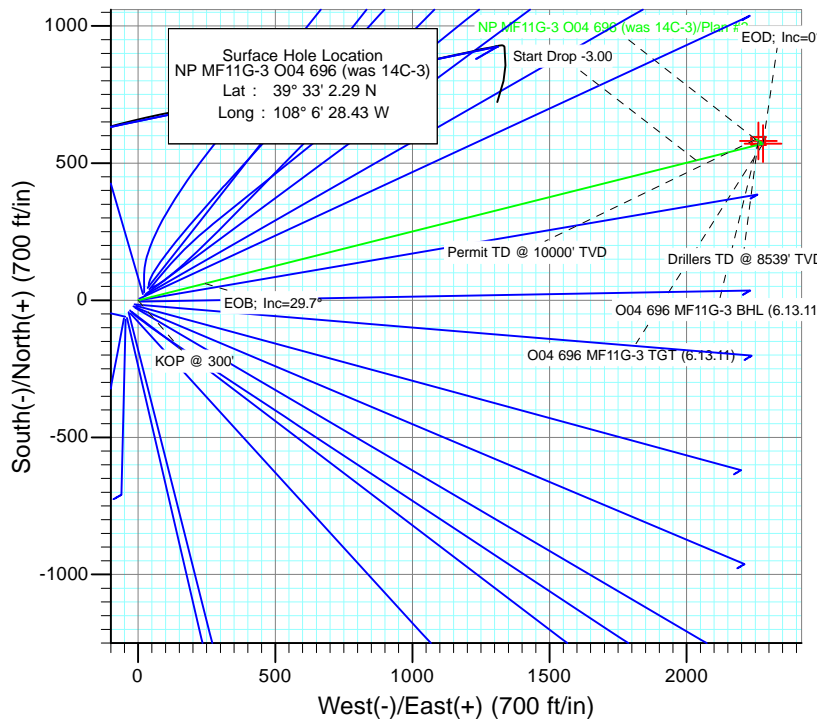




Project: North Piceance
 Site: O04 696 (3rd)
 Well: NP MF11G-3 O04 696 (was 14C-3)
 Wellbore: DD
 Design: Plan #2



SECTION DETAILS										
Sec	MD	Inc	Azi	TVD	+N/-S	+E/-W	Dleg	TFace	Vsect	Target
1	0.0	0.00	0.00	0.0	0.0	0.0	0.00	0.00	0.0	
2	300.0	0.00	0.00	300.0	0.0	0.0	0.00	0.00	0.0	
3	1290.4	29.71	75.93	1246.6	61.0	243.6	3.00	75.93	251.1	
4	5016.0	29.71	75.93	4482.4	509.9	2034.7	0.00	0.00	2097.6	O04 696 MF11G-3 TGT (6.13.11)
5	6006.4	0.00	0.00	5429.0	570.9	2278.3	3.00	180.00	2348.6	O04 696 MF11G-3 BHL (6.13.11)
6	6163.3	0.39	300.42	5585.9	571.2	2277.8	0.25	300.42	2348.3	
7	8966.5	0.39	300.42	8389.0	580.9	2261.3	0.00	0.00	2334.7	
8	9116.5	0.39	300.42	8539.0	581.4	2260.4	0.00	0.00	2334.0	
9	10577.5	0.39	300.42	10000.0	586.5	2251.8	0.00	0.00	2326.9	



Azimuths to True North
 Magnetic North: 10.54°

Magnetic Field
 Strength: 52365.1nT
 Dip Angle: 65.79°
 Date: 6/17/2010
 Model: IGRF2010

FORMATION TOP DETAILS

TVDPath	MDPath	Formation
4889.0	5458.9	Williams Fork
4929.0	5500.5	Top of Gas; Inc=15°
8389.0	8966.5	Rollins

Type TD	Target No Target (Freehand)	Azimuth 75.40	Origin Type Slot	N/S 0.0	E/W 0.0	From TVD 0.0
Name	TVD	+N/-S	+E/-W	Latitude	Longitude	
O04 696 MF11G-3 TGT (6.13.11)	5429.0	570.9	2278.3	39° 33' 7.93 N	108° 5' 59.34 W	
O04 696 MF11G-3 BHL (6.13.11)	8389.0	580.9	2261.3	39° 33' 8.03 N	108° 5' 59.56 W	

Plan #2
 NP MF11G-3 O04 696 (was 14C-3)
 95xxx; LR
 WELL @ 6044.0ft (Original Well Elev)
 North American Datum 1983
 Well NP MF11G-3 O04 696 (was 14C-3), True North

Planning Report

Database:	USA EDM 5000 US Multi Users DB	Local Co-ordinate Reference:	Well NP MF11G-3 O04 696 (was 14C-3)
Company:	EnCana Oil & Gas (USA) Inc	TVD Reference:	WELL @ 6044.0ft (Original Well Elev)
Project:	North Piceance	MD Reference:	WELL @ 6044.0ft (Original Well Elev)
Site:	O04 696 (3rd)	North Reference:	True
Well:	NP MF11G-3 O04 696 (was 14C-3)	Survey Calculation Method:	Minimum Curvature
Wellbore:	DD		
Design:	Plan #2		

Project	North Piceance		
Map System:	US State Plane 1983	System Datum:	Mean Sea Level
Geo Datum:	North American Datum 1983		
Map Zone:	Colorado Central Zone		

Site	O04 696 (3rd)			
Site Position:		Northing:	1,635,941.08 ft	Latitude: 39° 33' 1.64 N
From:	Lat/Long	Easting:	2,264,673.43 ft	Longitude: 108° 6' 29.09 W
Position Uncertainty:	0.0 ft	Slot Radius:	13.200 in	Grid Convergence: -1.64 °

Well	NP MF11G-3 O04 696 (was 14C-3)			
Well Position	+N/-S	0.0 ft	Northing:	1,636,005.32 ft
	+E/-W	0.0 ft	Easting:	2,264,726.99 ft
Position Uncertainty		0.0 ft	Wellhead Elevation:	ft
			Ground Level:	6,022.0 ft

Wellbore	DD				
Magnetics	Model Name	Sample Date	Declination (°)	Dip Angle (°)	Field Strength (nT)
	IGRF2010	6/17/2010	10.54	65.79	52,365

Design	Plan #2			
Audit Notes:				
Version:	Phase:	PLAN	Tie On Depth:	0.0
Vertical Section:	Depth From (TVD) (ft)	+N/-S (ft)	+E/-W (ft)	Direction (°)
	0.0	0.0	0.0	75.40

Plan Sections										
Measured Depth (ft)	Inclination (°)	Azimuth (°)	Vertical Depth (ft)	+N/-S (ft)	+E/-W (ft)	Dogleg Rate (°/100ft)	Build Rate (°/100ft)	Turn Rate (°/100ft)	TFO (°)	Target
0.0	0.00	0.00	0.0	0.0	0.0	0.00	0.00	0.00	0.00	
300.0	0.00	0.00	300.0	0.0	0.0	0.00	0.00	0.00	0.00	
1,290.4	29.71	75.93	1,246.6	61.0	243.6	3.00	3.00	0.00	75.93	
5,016.0	29.71	75.93	4,482.4	509.9	2,034.7	0.00	0.00	0.00	0.00	
6,006.4	0.00	0.00	5,429.0	570.9	2,278.3	3.00	-3.00	0.00	180.00	O04 696 MF11G-3 TC
6,163.3	0.39	300.42	5,585.9	571.2	2,277.8	0.25	0.25	-37.97	300.42	
8,966.5	0.39	300.42	8,389.0	580.9	2,261.3	0.00	0.00	0.00	0.00	O04 696 MF11G-3 B+
9,116.5	0.39	300.42	8,539.0	581.4	2,260.4	0.00	0.00	0.00	0.00	
10,577.5	0.39	300.42	10,000.0	586.5	2,251.8	0.00	0.00	0.00	0.00	

Planning Report

Database: USA EDM 5000 US Multi Users DB
Company: EnCana Oil & Gas (USA) Inc
Project: North Piceance
Site: O04 696 (3rd)
Well: NP MF11G-3 O04 696 (was 14C-3)
Wellbore: DD
Design: Plan #2

Local Co-ordinate Reference: Well NP MF11G-3 O04 696 (was 14C-3)
TVD Reference: WELL @ 6044.0ft (Original Well Elev)
MD Reference: WELL @ 6044.0ft (Original Well Elev)
North Reference: True
Survey Calculation Method: Minimum Curvature

Planned Survey

Measured Depth (ft)	Inclination (°)	Azimuth (°)	Vertical Depth (ft)	+N/-S (ft)	+E/-W (ft)	Vertical Section (ft)	Dogleg Rate (°/100ft)	Build Rate (°/100ft)	Comments / Formations
0.0	0.00	0.00	0.0	0.0	0.0	0.0	0.00	0.00	
30.0	0.00	0.00	30.0	0.0	0.0	0.0	0.00	0.00	
60.0	0.00	0.00	60.0	0.0	0.0	0.0	0.00	0.00	
90.0	0.00	0.00	90.0	0.0	0.0	0.0	0.00	0.00	
120.0	0.00	0.00	120.0	0.0	0.0	0.0	0.00	0.00	
150.0	0.00	0.00	150.0	0.0	0.0	0.0	0.00	0.00	
180.0	0.00	0.00	180.0	0.0	0.0	0.0	0.00	0.00	
210.0	0.00	0.00	210.0	0.0	0.0	0.0	0.00	0.00	
240.0	0.00	0.00	240.0	0.0	0.0	0.0	0.00	0.00	
270.0	0.00	0.00	270.0	0.0	0.0	0.0	0.00	0.00	
300.0	0.00	0.00	300.0	0.0	0.0	0.0	0.00	0.00	KOP @ 300'
330.0	0.90	75.93	330.0	0.1	0.2	0.2	3.00	3.00	
360.0	1.80	75.93	360.0	0.2	0.9	0.9	3.00	3.00	
390.0	2.70	75.93	390.0	0.5	2.1	2.1	3.00	3.00	
420.0	3.60	75.93	419.9	0.9	3.7	3.8	3.00	3.00	
450.0	4.50	75.93	449.8	1.4	5.7	5.9	3.00	3.00	
480.0	5.40	75.93	479.7	2.1	8.2	8.5	3.00	3.00	
510.0	6.30	75.93	509.6	2.8	11.2	11.5	3.00	3.00	
540.0	7.20	75.93	539.4	3.7	14.6	15.1	3.00	3.00	
570.0	8.10	75.93	569.1	4.6	18.5	19.1	3.00	3.00	
600.0	9.00	75.93	598.8	5.7	22.8	23.5	3.00	3.00	
630.0	9.90	75.93	628.4	6.9	27.6	28.4	3.00	3.00	
660.0	10.80	75.93	657.9	8.2	32.8	33.8	3.00	3.00	
690.0	11.70	75.93	687.3	9.6	38.5	39.7	3.00	3.00	
720.0	12.60	75.93	716.6	11.2	44.6	46.0	3.00	3.00	
750.0	13.50	75.93	745.8	12.8	51.2	52.8	3.00	3.00	
780.0	14.40	75.93	775.0	14.6	58.2	60.0	3.00	3.00	
810.0	15.30	75.93	804.0	16.5	65.7	67.7	3.00	3.00	
840.0	16.20	75.93	832.8	18.4	73.6	75.8	3.00	3.00	
870.0	17.10	75.93	861.6	20.5	81.9	84.4	3.00	3.00	
900.0	18.00	75.93	890.2	22.7	90.7	93.5	3.00	3.00	
930.0	18.90	75.93	918.6	25.0	99.9	103.0	3.00	3.00	
960.0	19.80	75.93	946.9	27.4	109.5	112.9	3.00	3.00	
990.0	20.70	75.93	975.1	30.0	119.6	123.3	3.00	3.00	
1,020.0	21.60	75.93	1,003.1	32.6	130.1	134.1	3.00	3.00	
1,050.0	22.50	75.93	1,030.9	35.3	141.0	145.4	3.00	3.00	
1,080.0	23.40	75.93	1,058.5	38.2	152.4	157.1	3.00	3.00	
1,110.0	24.30	75.93	1,085.9	41.1	164.1	169.2	3.00	3.00	
1,140.0	25.20	75.93	1,113.2	44.2	176.3	181.8	3.00	3.00	
1,170.0	26.10	75.93	1,140.2	47.3	188.9	194.7	3.00	3.00	
1,200.0	27.00	75.93	1,167.1	50.6	201.9	208.2	3.00	3.00	
1,230.0	27.90	75.93	1,193.7	54.0	215.3	222.0	3.00	3.00	
1,260.0	28.80	75.93	1,220.1	57.4	229.2	236.2	3.00	3.00	
1,290.0	29.70	75.93	1,246.3	61.0	243.4	250.9	3.00	3.00	
1,290.4	29.71	75.93	1,246.6	61.0	243.6	251.1	3.00	3.00	EOB; Inc=29.7°
1,320.0	29.71	75.93	1,272.3	64.6	257.8	265.8	0.00	0.00	
1,350.0	29.71	75.93	1,298.4	68.2	272.2	280.6	0.00	0.00	
1,380.0	29.71	75.93	1,324.4	71.8	286.6	295.5	0.00	0.00	
1,410.0	29.71	75.93	1,350.5	75.4	301.1	310.4	0.00	0.00	
1,440.0	29.71	75.93	1,376.5	79.1	315.5	325.2	0.00	0.00	
1,470.0	29.71	75.93	1,402.6	82.7	329.9	340.1	0.00	0.00	
1,500.0	29.71	75.93	1,428.6	86.3	344.3	355.0	0.00	0.00	

Planning Report

Database:	USA EDM 5000 US Multi Users DB	Local Co-ordinate Reference:	Well NP MF11G-3 O04 696 (was 14C-3)
Company:	EnCana Oil & Gas (USA) Inc	TVD Reference:	WELL @ 6044.0ft (Original Well Elev)
Project:	North Piceance	MD Reference:	WELL @ 6044.0ft (Original Well Elev)
Site:	O04 696 (3rd)	North Reference:	True
Well:	NP MF11G-3 O04 696 (was 14C-3)	Survey Calculation Method:	Minimum Curvature
Wellbore:	DD		
Design:	Plan #2		

Planned Survey

Measured Depth (ft)	Inclination (°)	Azimuth (°)	Vertical Depth (ft)	+N/-S (ft)	+E/-W (ft)	Vertical Section (ft)	Dogleg Rate (°/100ft)	Build Rate (°/100ft)	Comments / Formations
1,530.0	29.71	75.93	1,454.7	89.9	358.8	369.8	0.00	0.00	
1,560.0	29.71	75.93	1,480.8	93.5	373.2	384.7	0.00	0.00	
1,590.0	29.71	75.93	1,506.8	97.1	387.6	399.6	0.00	0.00	
1,620.0	29.71	75.93	1,532.9	100.7	402.0	414.4	0.00	0.00	
1,650.0	29.71	75.93	1,558.9	104.4	416.4	429.3	0.00	0.00	
1,680.0	29.71	75.93	1,585.0	108.0	430.9	444.2	0.00	0.00	
1,710.0	29.71	75.93	1,611.0	111.6	445.3	459.0	0.00	0.00	
1,740.0	29.71	75.93	1,637.1	115.2	459.7	473.9	0.00	0.00	
1,770.0	29.71	75.93	1,663.2	118.8	474.1	488.8	0.00	0.00	
1,800.0	29.71	75.93	1,689.2	122.4	488.6	503.6	0.00	0.00	
1,830.0	29.71	75.93	1,715.3	126.0	503.0	518.5	0.00	0.00	
1,860.0	29.71	75.93	1,741.3	129.7	517.4	533.4	0.00	0.00	
1,890.0	29.71	75.93	1,767.4	133.3	531.8	548.3	0.00	0.00	
1,920.0	29.71	75.93	1,793.4	136.9	546.3	563.1	0.00	0.00	
1,950.0	29.71	75.93	1,819.5	140.5	560.7	578.0	0.00	0.00	
1,980.0	29.71	75.93	1,845.5	144.1	575.1	592.9	0.00	0.00	
2,010.0	29.71	75.93	1,871.6	147.7	589.5	607.7	0.00	0.00	
2,040.0	29.71	75.93	1,897.7	151.3	604.0	622.6	0.00	0.00	
2,070.0	29.71	75.93	1,923.7	155.0	618.4	637.5	0.00	0.00	
2,100.0	29.71	75.93	1,949.8	158.6	632.8	652.3	0.00	0.00	
2,130.0	29.71	75.93	1,975.8	162.2	647.2	667.2	0.00	0.00	
2,160.0	29.71	75.93	2,001.9	165.8	661.6	682.1	0.00	0.00	
2,190.0	29.71	75.93	2,027.9	169.4	676.1	696.9	0.00	0.00	
2,220.0	29.71	75.93	2,054.0	173.0	690.5	711.8	0.00	0.00	
2,250.0	29.71	75.93	2,080.0	176.6	704.9	726.7	0.00	0.00	
2,280.0	29.71	75.93	2,106.1	180.3	719.3	741.5	0.00	0.00	
2,310.0	29.71	75.93	2,132.2	183.9	733.8	756.4	0.00	0.00	
2,340.0	29.71	75.93	2,158.2	187.5	748.2	771.3	0.00	0.00	
2,370.0	29.71	75.93	2,184.3	191.1	762.6	786.2	0.00	0.00	
2,400.0	29.71	75.93	2,210.3	194.7	777.0	801.0	0.00	0.00	
2,430.0	29.71	75.93	2,236.4	198.3	791.5	815.9	0.00	0.00	
2,460.0	29.71	75.93	2,262.4	201.9	805.9	830.8	0.00	0.00	
2,490.0	29.71	75.93	2,288.5	205.6	820.3	845.6	0.00	0.00	

Targets

Target Name	Dip Angle (°)	Dip Dir. (°)	TVD (ft)	+N/-S (ft)	+E/-W (ft)	Northing (ft)	Easting (ft)	Latitude	Longitude
- hit/miss target									
- Shape									
O04 696 MF11G-3 BHL	0.00	0.00	8,389.0	580.9	2,261.3	1,636,521.06	2,267,004.02	39° 33' 8.03 N	108° 5' 59.56 W
- plan misses target center by 6279.6ft at 2490.0ft MD (2288.5 TVD, 205.6 N, 820.3 E)									
- Rectangle (sides W30.0 H50.0 D0.0)									
O04 696 MF11G-3 TGT	0.00	0.00	5,429.0	570.9	2,278.3	1,636,510.59	2,267,020.74	39° 33' 7.93 N	108° 5' 59.34 W
- plan misses target center by 3481.7ft at 2490.0ft MD (2288.5 TVD, 205.6 N, 820.3 E)									
- Point									

Planning Report

Database: USA EDM 5000 US Multi Users DB
Company: EnCana Oil & Gas (USA) Inc
Project: North Piceance
Site: O04 696 (3rd)
Well: NP MF11G-3 O04 696 (was 14C-3)
Wellbore: DD
Design: Plan #2

Local Co-ordinate Reference: Well NP MF11G-3 O04 696 (was 14C-3)
TVD Reference: WELL @ 6044.0ft (Original Well Elev)
MD Reference: WELL @ 6044.0ft (Original Well Elev)
North Reference: True
Survey Calculation Method: Minimum Curvature

Planned Survey

Measured Depth (ft)	Inclination (°)	Azimuth (°)	Vertical Depth (ft)	+N/-S (ft)	+E/-W (ft)	Vertical Section (ft)	Dogleg Rate (°/100ft)	Build Rate (°/100ft)	Comments / Formations
2,500.0	29.71	75.93	2,297.2	206.8	825.1	850.6	0.00	0.00	
2,600.0	29.71	75.93	2,384.0	218.8	873.2	900.1	0.00	0.00	
2,700.0	29.71	75.93	2,470.9	230.9	921.3	949.7	0.00	0.00	
2,800.0	29.71	75.93	2,557.7	242.9	969.3	999.3	0.00	0.00	
2,900.0	29.71	75.93	2,644.6	254.9	1,017.4	1,048.8	0.00	0.00	
3,000.0	29.71	75.93	2,731.4	267.0	1,065.5	1,098.4	0.00	0.00	
3,100.0	29.71	75.93	2,818.3	279.0	1,113.6	1,148.0	0.00	0.00	
3,200.0	29.71	75.93	2,905.1	291.1	1,161.6	1,197.5	0.00	0.00	
3,300.0	29.71	75.93	2,992.0	303.1	1,209.7	1,247.1	0.00	0.00	
3,400.0	29.71	75.93	3,078.9	315.2	1,257.8	1,296.6	0.00	0.00	
3,500.0	29.71	75.93	3,165.7	327.2	1,305.9	1,346.2	0.00	0.00	
3,600.0	29.71	75.93	3,252.6	339.3	1,354.0	1,395.8	0.00	0.00	
3,700.0	29.71	75.93	3,339.4	351.3	1,402.0	1,445.3	0.00	0.00	
3,800.0	29.71	75.93	3,426.3	363.4	1,450.1	1,494.9	0.00	0.00	
3,900.0	29.71	75.93	3,513.1	375.4	1,498.2	1,544.4	0.00	0.00	
4,000.0	29.71	75.93	3,600.0	387.5	1,546.3	1,594.0	0.00	0.00	
4,100.0	29.71	75.93	3,686.8	399.5	1,594.3	1,643.6	0.00	0.00	
4,200.0	29.71	75.93	3,773.7	411.6	1,642.4	1,693.1	0.00	0.00	
4,300.0	29.71	75.93	3,860.5	423.6	1,690.5	1,742.7	0.00	0.00	
4,400.0	29.71	75.93	3,947.4	435.7	1,738.6	1,792.3	0.00	0.00	
4,500.0	29.71	75.93	4,034.2	447.7	1,786.7	1,841.8	0.00	0.00	
4,600.0	29.71	75.93	4,121.1	459.8	1,834.7	1,891.4	0.00	0.00	
4,700.0	29.71	75.93	4,207.9	471.8	1,882.8	1,940.9	0.00	0.00	
4,800.0	29.71	75.93	4,294.8	483.8	1,930.9	1,990.5	0.00	0.00	
4,900.0	29.71	75.93	4,381.6	495.9	1,979.0	2,040.1	0.00	0.00	
5,000.0	29.71	75.93	4,468.5	507.9	2,027.0	2,089.6	0.00	0.00	
5,016.0	29.71	75.93	4,482.4	509.9	2,034.7	2,097.6	0.00	0.00	Start Drop -3.00
5,100.0	27.19	75.93	4,556.2	519.6	2,073.6	2,137.6	3.00	-3.00	
5,200.0	24.19	75.93	4,646.3	530.1	2,115.6	2,180.9	3.00	-3.00	
5,300.0	21.19	75.93	4,738.6	539.5	2,153.0	2,219.5	3.00	-3.00	
5,400.0	18.19	75.93	4,832.7	547.7	2,185.7	2,253.2	3.00	-3.00	
5,458.9	16.42	75.93	4,889.0	552.0	2,202.7	2,270.7	3.00	-3.00	Williams Fork
5,500.0	15.19	75.93	4,928.5	554.7	2,213.6	2,281.9	3.00	-3.00	
5,500.5	15.18	75.93	4,929.0	554.7	2,213.7	2,282.0	3.00	-3.00	Top of Gas; Inc=15°
5,600.0	12.19	75.93	5,025.7	560.4	2,236.5	2,305.6	3.00	-3.00	
5,700.0	9.19	75.93	5,123.9	564.9	2,254.5	2,324.1	3.00	-3.00	
5,800.0	6.19	75.93	5,223.0	568.2	2,267.5	2,337.5	3.00	-3.00	
5,900.0	3.19	75.93	5,322.7	570.2	2,275.4	2,345.7	3.00	-3.00	
6,000.0	0.19	75.93	5,422.6	570.9	2,278.3	2,348.6	3.00	-3.00	
6,006.4	0.00	0.00	5,429.0	570.9	2,278.3	2,348.6	3.00	-3.00	EOD; Inc=0° - O04 696 MF11G-3 TGT (6.13.11)
6,100.0	0.23	300.42	5,522.6	571.0	2,278.1	2,348.5	0.25	0.25	
6,163.3	0.39	300.42	5,585.9	571.2	2,277.8	2,348.3	0.25	0.25	
6,200.0	0.39	300.42	5,622.6	571.3	2,277.6	2,348.1	0.00	0.00	
6,300.0	0.39	300.42	5,722.6	571.6	2,277.0	2,347.6	0.00	0.00	
6,400.0	0.39	300.42	5,822.6	572.0	2,276.4	2,347.1	0.00	0.00	
6,500.0	0.39	300.42	5,922.6	572.3	2,275.8	2,346.6	0.00	0.00	
6,600.0	0.39	300.42	6,022.6	572.7	2,275.3	2,346.1	0.00	0.00	
6,700.0	0.39	300.42	6,122.6	573.0	2,274.7	2,345.7	0.00	0.00	
6,800.0	0.39	300.42	6,222.6	573.4	2,274.1	2,345.2	0.00	0.00	
6,900.0	0.39	300.42	6,322.6	573.7	2,273.5	2,344.7	0.00	0.00	
7,000.0	0.39	300.42	6,422.6	574.1	2,272.9	2,344.2	0.00	0.00	
7,100.0	0.39	300.42	6,522.6	574.4	2,272.3	2,343.7	0.00	0.00	

Planning Report

Database:	USA EDM 5000 US Multi Users DB	Local Co-ordinate Reference:	Well NP MF11G-3 O04 696 (was 14C-3)
Company:	EnCana Oil & Gas (USA) Inc	TVD Reference:	WELL @ 6044.0ft (Original Well Elev)
Project:	North Piceance	MD Reference:	WELL @ 6044.0ft (Original Well Elev)
Site:	O04 696 (3rd)	North Reference:	True
Well:	NP MF11G-3 O04 696 (was 14C-3)	Survey Calculation Method:	Minimum Curvature
Wellbore:	DD		
Design:	Plan #2		

Planned Survey

Measured Depth (ft)	Inclination (°)	Azimuth (°)	Vertical Depth (ft)	+N/-S (ft)	+E/-W (ft)	Vertical Section (ft)	Dogleg Rate (°/100ft)	Build Rate (°/100ft)	Comments / Formations
7,200.0	0.39	300.42	6,622.6	574.8	2,271.7	2,343.2	0.00	0.00	
7,300.0	0.39	300.42	6,722.6	575.1	2,271.1	2,342.8	0.00	0.00	
7,400.0	0.39	300.42	6,822.6	575.5	2,270.5	2,342.3	0.00	0.00	
7,500.0	0.39	300.42	6,922.6	575.8	2,269.9	2,341.8	0.00	0.00	
7,600.0	0.39	300.42	7,022.6	576.2	2,269.4	2,341.3	0.00	0.00	
7,700.0	0.39	300.42	7,122.6	576.5	2,268.8	2,340.8	0.00	0.00	
7,800.0	0.39	300.42	7,222.6	576.8	2,268.2	2,340.3	0.00	0.00	
7,900.0	0.39	300.42	7,322.6	577.2	2,267.6	2,339.9	0.00	0.00	
8,000.0	0.39	300.42	7,422.6	577.5	2,267.0	2,339.4	0.00	0.00	
8,100.0	0.39	300.42	7,522.6	577.9	2,266.4	2,338.9	0.00	0.00	
8,200.0	0.39	300.42	7,622.5	578.2	2,265.8	2,338.4	0.00	0.00	
8,300.0	0.39	300.42	7,722.5	578.6	2,265.2	2,337.9	0.00	0.00	
8,400.0	0.39	300.42	7,822.5	578.9	2,264.6	2,337.4	0.00	0.00	
8,500.0	0.39	300.42	7,922.5	579.3	2,264.0	2,337.0	0.00	0.00	
8,600.0	0.39	300.42	8,022.5	579.6	2,263.5	2,336.5	0.00	0.00	
8,700.0	0.39	300.42	8,122.5	580.0	2,262.9	2,336.0	0.00	0.00	
8,800.0	0.39	300.42	8,222.5	580.3	2,262.3	2,335.5	0.00	0.00	
8,900.0	0.39	300.42	8,322.5	580.7	2,261.7	2,335.0	0.00	0.00	
8,966.5	0.39	300.42	8,389.0	580.9	2,261.3	2,334.7	0.00	0.00	Rollins - O04 696 MF11G-3 BHL (6.13.11)
9,000.0	0.39	300.42	8,422.5	581.0	2,261.1	2,334.5	0.00	0.00	
9,100.0	0.39	300.42	8,522.5	581.4	2,260.5	2,334.0	0.00	0.00	
9,116.5	0.39	300.42	8,539.0	581.4	2,260.4	2,334.0	0.00	0.00	Drillers TD @ 8539' TVD
9,200.0	0.39	300.42	8,622.5	581.7	2,259.9	2,333.6	0.00	0.00	
9,300.0	0.39	300.42	8,722.5	582.0	2,259.3	2,333.1	0.00	0.00	
9,400.0	0.39	300.42	8,822.5	582.4	2,258.7	2,332.6	0.00	0.00	
9,500.0	0.39	300.42	8,922.5	582.7	2,258.1	2,332.1	0.00	0.00	
9,600.0	0.39	300.42	9,022.5	583.1	2,257.5	2,331.6	0.00	0.00	
9,700.0	0.39	300.42	9,122.5	583.4	2,257.0	2,331.1	0.00	0.00	
9,800.0	0.39	300.42	9,222.5	583.8	2,256.4	2,330.7	0.00	0.00	
9,900.0	0.39	300.42	9,322.5	584.1	2,255.8	2,330.2	0.00	0.00	
10,000.0	0.39	300.42	9,422.5	584.5	2,255.2	2,329.7	0.00	0.00	
10,100.0	0.39	300.42	9,522.5	584.8	2,254.6	2,329.2	0.00	0.00	
10,200.0	0.39	300.42	9,622.5	585.2	2,254.0	2,328.7	0.00	0.00	
10,300.0	0.39	300.42	9,722.5	585.5	2,253.4	2,328.2	0.00	0.00	
10,400.0	0.39	300.42	9,822.5	585.9	2,252.8	2,327.8	0.00	0.00	
10,500.0	0.39	300.42	9,922.5	586.2	2,252.2	2,327.3	0.00	0.00	
10,577.5	0.39	300.42	10,000.0	586.5	2,251.8	2,326.9	0.00	0.00	Permit TD @ 10000' TVD

Targets									
Target Name									
- hit/miss target	Dip Angle (°)	Dip Dir. (°)	TVD (ft)	+N/-S (ft)	+E/-W (ft)	Northing (ft)	Easting (ft)	Latitude	Longitude
- Shape									
O04 696 MF11G-3 BHL - plan hits target center - Rectangle (sides W30.0 H50.0 D0.0)	0.00	0.00	8,389.0	580.9	2,261.3	1,636,521.06	2,267,004.02	39° 33' 8.03 N	108° 5' 59.56 W
O04 696 MF11G-3 TGT - plan hits target center - Point	0.00	0.00	5,429.0	570.9	2,278.3	1,636,510.59	2,267,020.74	39° 33' 7.93 N	108° 5' 59.34 W

Planning Report

Database:	USA EDM 5000 US Multi Users DB	Local Co-ordinate Reference:	Well NP MF11G-3 O04 696 (was 14C-3)
Company:	EnCana Oil & Gas (USA) Inc	TVD Reference:	WELL @ 6044.0ft (Original Well Elev)
Project:	North Piceance	MD Reference:	WELL @ 6044.0ft (Original Well Elev)
Site:	O04 696 (3rd)	North Reference:	True
Well:	NP MF11G-3 O04 696 (was 14C-3)	Survey Calculation Method:	Minimum Curvature
Wellbore:	DD		
Design:	Plan #2		

Formations					
Measured Depth (ft)	Vertical Depth (ft)	Name	Lithology	Dip (°)	Dip Direction (°)
5,458.9	4,889.0	Williams Fork		0.00	
5,500.5	4,929.0	Top of Gas; Inc=15°		0.00	
8,966.5	8,389.0	Rollins		0.00	

Plan Annotations				
Measured Depth (ft)	Vertical Depth (ft)	Local Coordinates		Comment
		+N/-S (ft)	+E/-W (ft)	
300.0	300.0	0.0	0.0	KOP @ 300'
1,290.4	1,246.6	61.0	243.6	EOB; Inc=29.7°
5,016.0	4,482.4	509.9	2,034.7	Start Drop -3.00
6,006.4	5,429.0	570.9	2,278.3	EOD; Inc=0°
9,116.5	8,539.0	571.2	2,277.8	Drillers TD @ 8539' TVD
10,577.5	10,000.0	580.9	2,261.3	Permit TD @ 10000' TVD