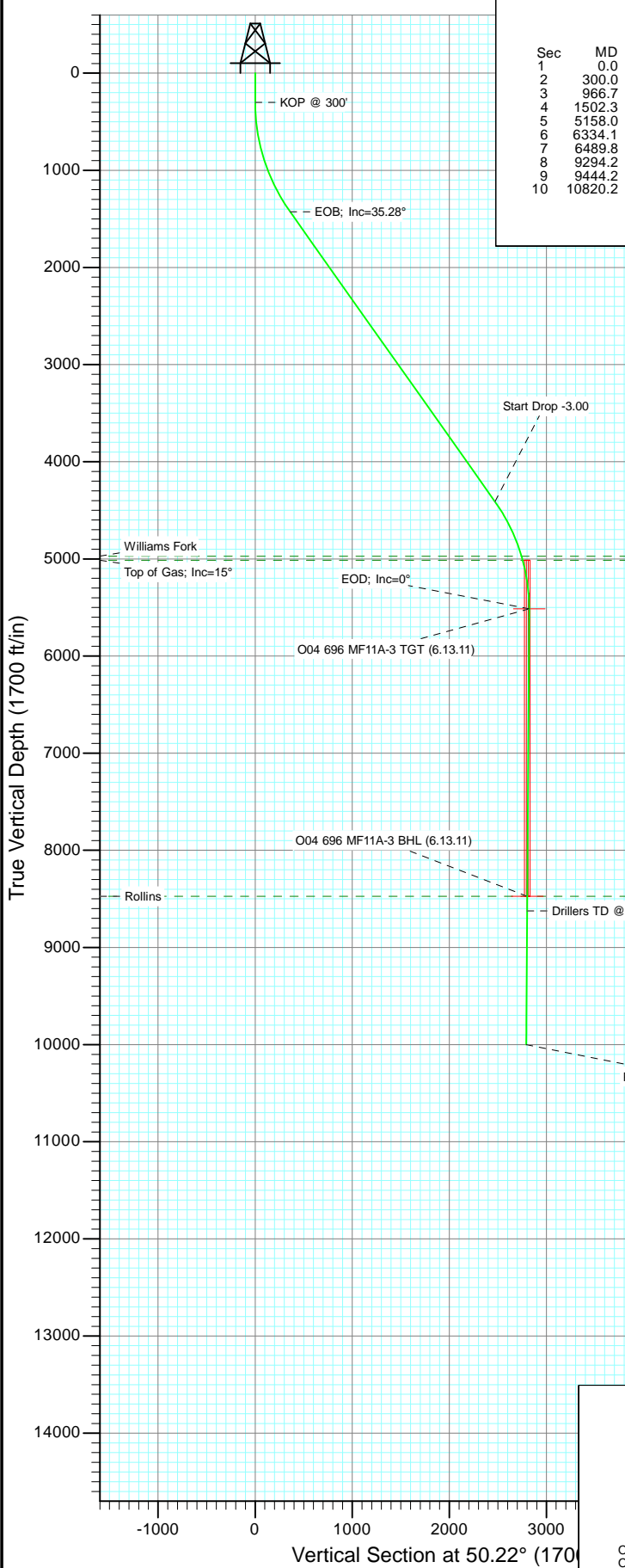
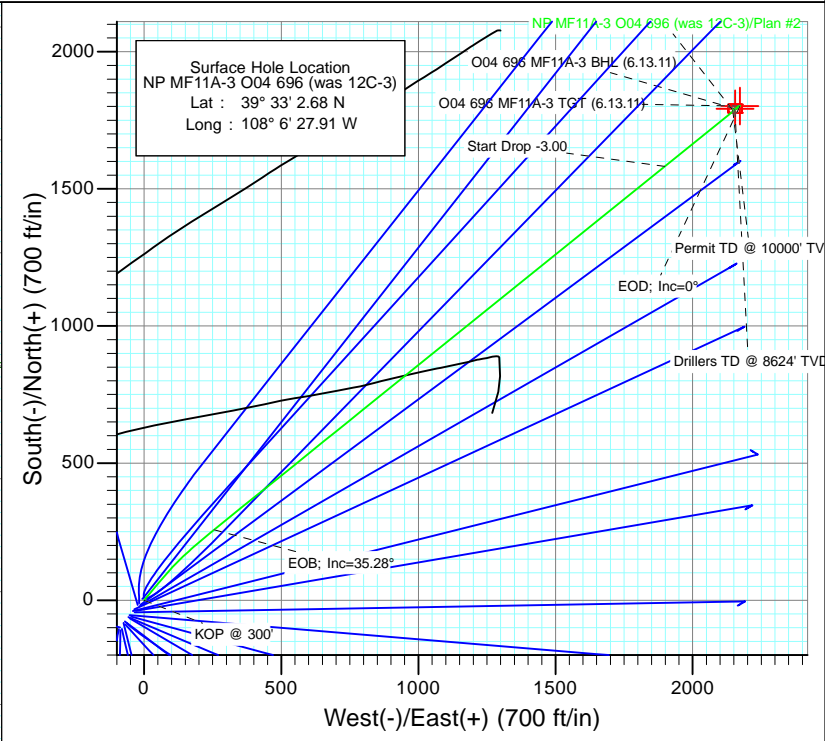




Project: North Piceance
 Site: O04 696 (3rd)
 Well: NP MF11A-3 O04 696 (was 12C-3)
 Wellbore: DD
 Design: Plan #2



SECTION DETAILS										
Sec	MD	Inc	Azi	TVD	+N/-S	+E/-W	Dleg	TFace	VSEct	Target
1	0.0	0.00	0.00	0.0	0.0	0.0	0.00	0.00	0.0	
2	300.0	0.00	0.00	300.0	0.0	0.0	0.00	0.00	0.0	
3	966.7	20.00	40.00	953.2	88.2	74.0	3.00	40.00	113.4	
4	1502.3	35.28	51.13	1426.6	256.6	254.5	3.00	23.74	359.8	
5	5158.0	35.28	51.13	4410.9	1581.8	1898.4	0.00	0.00	2471.1	
6	6334.1	0.00	0.00	5514.0	1802.0	2171.5	3.00	180.00	2821.8	O04 696 MF11A-3 TGT (6.13.11)
7	6489.8	0.39	239.30	5669.8	1801.7	2171.0	0.25	239.30	2821.3	
8	9294.2	0.39	239.30	8474.0	1792.0	2154.7	0.00	0.00	2802.5	O04 696 MF11A-3 BHL (6.13.11)
9	9444.2	0.39	239.30	8624.0	1791.5	2153.8	0.00	0.00	2801.5	
10	10820.2	0.39	239.30	10000.0	1786.7	2145.7	0.00	0.00	2792.2	



Azimuths to True North
 Magnetic North: 10.54°

Magnetic Field
 Strength: 52365.2snT
 Dip Angle: 65.79°
 Date: 6/17/2010
 Model: IGRF2010

FORMATION TOP DETAILS		
TVDPath	MDPath	Formation
4974.0	5786.6	Williams Fork
5014.0	5828.2	Top of Gas; Inc=15°
8474.0	9294.2	Rollins

Plan #2 NP MF11A-3 O04 696 (was 12C-3) 95xxx; LR WELL @ 6044.0ft (Original Well Elev) North American Datum 1983 Well NP MF11A-3 O04 696 (was 12C-3), True North							
Type TD	Target No Target (Freehand)	Azimuth 50.22	Origin Type Slot	N/S 0.0	E/W 0.0	From TVD 0.0	
Name	TVD	+N/-S	+E/-W	Latitude	Longitude		
O04 696 MF11A-3 TGT (6.13.11)	5514.0	1802.0	2171.5	39° 33' 20.49 N	108° 6' 0.18 W		
O04 696 MF11A-3 BHL (6.13.11)	8474.0	1792.0	2154.7	39° 33' 20.39 N	108° 6' 0.40 W		

Planning Report

Database: USA EDM 5000 US Multi Users DB	Local Co-ordinate Reference: Well NP MF11A-3 O04 696 (was 12C-3)
Company: EnCana Oil & Gas (USA) Inc	TVD Reference: WELL @ 6044.0ft (Original Well Elev)
Project: North Piceance	MD Reference: WELL @ 6044.0ft (Original Well Elev)
Site: O04 696 (3rd)	North Reference: True
Well: NP MF11A-3 O04 696 (was 12C-3)	Survey Calculation Method: Minimum Curvature
Wellbore: DD	
Design: Plan #2	

Project North Piceance		
Map System: US State Plane 1983	System Datum: Mean Sea Level	
Geo Datum: North American Datum 1983		
Map Zone: Colorado Central Zone		

Site O04 696 (3rd)					
Site Position:		Northing:	1,635,941.08 ft	Latitude:	39° 33' 1.64 N
From: Lat/Long		Easting:	2,264,673.43 ft	Longitude:	108° 6' 29.09 W
Position Uncertainty:	0.0 ft	Slot Radius:	13.200 in	Grid Convergence:	-1.64 °

Well NP MF11A-3 O04 696 (was 12C-3)					
Well Position	+N/-S	0.0 ft	Northing:	1,636,043.59 ft	Latitude: 39° 33' 2.68 N
	+E/-W	0.0 ft	Easting:	2,264,768.83 ft	Longitude: 108° 6' 27.91 W
Position Uncertainty		0.0 ft	Wellhead Elevation:	ft	Ground Level: 6,022.0 ft

Wellbore DD					
Magnetics	Model Name	Sample Date	Declination	Dip Angle	Field Strength
	IGRF2010	6/17/2010	(°)	(°)	(nT)
			10.54	65.79	52,365

Design Plan #2				
Audit Notes:				
Version:	Phase:	PLAN	Tie On Depth:	0.0
Vertical Section:	Depth From (TVD)	+N/-S	+E/-W	Direction
	(ft)	(ft)	(ft)	(°)
	0.0	0.0	0.0	50.22

Plan Sections										
Measured Depth (ft)	Inclination (°)	Azimuth (°)	Vertical Depth (ft)	+N/-S (ft)	+E/-W (ft)	Dogleg Rate (°/100ft)	Build Rate (°/100ft)	Turn Rate (°/100ft)	TFO (°)	Target
0.0	0.00	0.00	0.0	0.0	0.0	0.00	0.00	0.00	0.00	
300.0	0.00	0.00	300.0	0.0	0.0	0.00	0.00	0.00	0.00	
966.7	20.00	40.00	953.2	88.2	74.0	3.00	3.00	0.00	40.00	
1,502.3	35.28	51.13	1,426.6	256.6	254.5	3.00	2.85	2.08	23.74	
5,158.0	35.28	51.13	4,410.9	1,581.8	1,898.4	0.00	0.00	0.00	0.00	
6,334.1	0.00	0.00	5,514.0	1,802.0	2,171.5	3.00	-3.00	0.00	180.00	O04 696 MF11A-3 TC
6,489.8	0.39	239.30	5,669.8	1,801.7	2,171.0	0.25	0.25	-77.50	239.30	
9,294.2	0.39	239.30	8,474.0	1,792.0	2,154.7	0.00	0.00	0.00	0.00	O04 696 MF11A-3 B-
9,444.2	0.39	239.30	8,624.0	1,791.5	2,153.8	0.00	0.00	0.00	0.00	
10,820.2	0.39	239.30	10,000.0	1,786.7	2,145.7	0.00	0.00	0.00	0.00	

Planning Report

Database:	USA EDM 5000 US Multi Users DB	Local Co-ordinate Reference:	Well NP MF11A-3 O04 696 (was 12C-3)
Company:	EnCana Oil & Gas (USA) Inc	TVD Reference:	WELL @ 6044.0ft (Original Well Elev)
Project:	North Piceance	MD Reference:	WELL @ 6044.0ft (Original Well Elev)
Site:	O04 696 (3rd)	North Reference:	True
Well:	NP MF11A-3 O04 696 (was 12C-3)	Survey Calculation Method:	Minimum Curvature
Wellbore:	DD		
Design:	Plan #2		

Planned Survey									
Measured Depth (ft)	Inclination (°)	Azimuth (°)	Vertical Depth (ft)	+N/-S (ft)	+E/-W (ft)	Vertical Section (ft)	Dogleg Rate (°/100ft)	Build Rate (°/100ft)	Comments / Formations
0.0	0.00	0.00	0.0	0.0	0.0	0.0	0.00	0.00	
30.0	0.00	0.00	30.0	0.0	0.0	0.0	0.00	0.00	
60.0	0.00	0.00	60.0	0.0	0.0	0.0	0.00	0.00	
90.0	0.00	0.00	90.0	0.0	0.0	0.0	0.00	0.00	
120.0	0.00	0.00	120.0	0.0	0.0	0.0	0.00	0.00	
150.0	0.00	0.00	150.0	0.0	0.0	0.0	0.00	0.00	
180.0	0.00	0.00	180.0	0.0	0.0	0.0	0.00	0.00	
210.0	0.00	0.00	210.0	0.0	0.0	0.0	0.00	0.00	
240.0	0.00	0.00	240.0	0.0	0.0	0.0	0.00	0.00	
270.0	0.00	0.00	270.0	0.0	0.0	0.0	0.00	0.00	
300.0	0.00	0.00	300.0	0.0	0.0	0.0	0.00	0.00	KOP @ 300'
330.0	0.90	40.00	330.0	0.2	0.2	0.2	3.00	3.00	
360.0	1.80	40.00	360.0	0.7	0.6	0.9	3.00	3.00	
390.0	2.70	40.00	390.0	1.6	1.4	2.1	3.00	3.00	
420.0	3.60	40.00	419.9	2.9	2.4	3.7	3.00	3.00	
450.0	4.50	40.00	449.8	4.5	3.8	5.8	3.00	3.00	
480.0	5.40	40.00	479.7	6.5	5.4	8.3	3.00	3.00	
510.0	6.30	40.00	509.6	8.8	7.4	11.4	3.00	3.00	
540.0	7.20	40.00	539.4	11.5	9.7	14.8	3.00	3.00	
570.0	8.10	40.00	569.1	14.6	12.2	18.8	3.00	3.00	
600.0	9.00	40.00	598.8	18.0	15.1	23.1	3.00	3.00	
630.0	9.90	40.00	628.4	21.8	18.3	28.0	3.00	3.00	
660.0	10.80	40.00	657.9	25.9	21.7	33.3	3.00	3.00	
690.0	11.70	40.00	687.3	30.4	25.5	39.1	3.00	3.00	
720.0	12.60	40.00	716.6	35.2	29.6	45.3	3.00	3.00	
750.0	13.50	40.00	745.8	40.4	33.9	51.9	3.00	3.00	
780.0	14.40	40.00	775.0	46.0	38.6	59.1	3.00	3.00	
810.0	15.30	40.00	804.0	51.9	43.5	66.6	3.00	3.00	
840.0	16.20	40.00	832.8	58.1	48.7	74.6	3.00	3.00	
870.0	17.10	40.00	861.6	64.7	54.3	83.1	3.00	3.00	
900.0	18.00	40.00	890.2	71.6	60.1	92.0	3.00	3.00	
930.0	18.90	40.00	918.6	78.9	66.2	101.3	3.00	3.00	
960.0	19.80	40.00	946.9	86.5	72.6	111.1	3.00	3.00	
966.7	20.00	40.00	953.2	88.2	74.0	113.4	3.00	3.00	
990.0	20.64	40.80	975.1	94.4	79.3	121.3	3.00	2.75	
1,020.0	21.47	41.76	1,003.1	102.5	86.4	132.0	3.00	2.77	
1,050.0	22.31	42.65	1,030.9	110.8	93.9	143.1	3.00	2.79	
1,080.0	23.15	43.48	1,058.6	119.3	101.8	154.6	3.00	2.80	
1,110.0	24.00	44.26	1,086.1	127.9	110.1	166.5	3.00	2.82	
1,140.0	24.84	44.98	1,113.4	136.7	118.9	178.8	3.00	2.83	
1,170.0	25.70	45.66	1,140.5	145.7	128.0	191.6	3.00	2.84	
1,200.0	26.55	46.30	1,167.5	154.9	137.5	204.8	3.00	2.85	
1,230.0	27.41	46.90	1,194.2	164.3	147.4	218.3	3.00	2.86	
1,260.0	28.27	47.47	1,220.7	173.8	157.6	232.3	3.00	2.87	
1,290.0	29.13	48.01	1,247.0	183.5	168.3	246.7	3.00	2.87	
1,320.0	30.00	48.52	1,273.1	193.3	179.3	261.5	3.00	2.88	
1,350.0	30.86	49.00	1,299.0	203.3	190.8	276.7	3.00	2.89	
1,380.0	31.73	49.46	1,324.6	213.5	202.6	292.3	3.00	2.89	
1,410.0	32.60	49.90	1,350.0	223.8	214.7	308.3	3.00	2.90	
1,440.0	33.47	50.32	1,375.2	234.3	227.3	324.6	3.00	2.90	
1,470.0	34.34	50.72	1,400.1	245.0	240.2	341.3	3.00	2.91	
1,500.0	35.21	51.10	1,424.7	255.8	253.5	358.5	3.00	2.91	

Planning Report

Database: USA EDM 5000 US Multi Users DB	Local Co-ordinate Reference: Well NP MF11A-3 O04 696 (was 12C-3)
Company: EnCana Oil & Gas (USA) Inc	TVD Reference: WELL @ 6044.0ft (Original Well Elev)
Project: North Piceance	MD Reference: WELL @ 6044.0ft (Original Well Elev)
Site: O04 696 (3rd)	North Reference: True
Well: NP MF11A-3 O04 696 (was 12C-3)	Survey Calculation Method: Minimum Curvature
Wellbore: DD	
Design: Plan #2	

Planned Survey									
Measured Depth (ft)	Inclination (°)	Azimuth (°)	Vertical Depth (ft)	+N/-S (ft)	+E/-W (ft)	Vertical Section (ft)	Dogleg Rate (°/100ft)	Build Rate (°/100ft)	Comments / Formations
1,502.3	35.28	51.13	1,426.6	256.6	254.5	359.8	2.99	2.90	EOB; Inc=35.28°
1,530.0	35.28	51.13	1,449.2	266.6	267.0	375.8	0.00	0.00	
1,560.0	35.28	51.13	1,473.7	277.5	280.5	393.1	0.00	0.00	
1,590.0	35.28	51.13	1,498.2	288.4	294.0	410.4	0.00	0.00	
1,620.0	35.28	51.13	1,522.7	299.3	307.5	427.8	0.00	0.00	
1,650.0	35.28	51.13	1,547.2	310.1	320.9	445.1	0.00	0.00	
1,680.0	35.28	51.13	1,571.7	321.0	334.4	462.4	0.00	0.00	
1,710.0	35.28	51.13	1,596.2	331.9	347.9	479.7	0.00	0.00	
1,740.0	35.28	51.13	1,620.6	342.8	361.4	497.1	0.00	0.00	
1,770.0	35.28	51.13	1,645.1	353.6	374.9	514.4	0.00	0.00	
1,800.0	35.28	51.13	1,669.6	364.5	388.4	531.7	0.00	0.00	
1,830.0	35.28	51.13	1,694.1	375.4	401.9	549.0	0.00	0.00	
1,860.0	35.28	51.13	1,718.6	386.3	415.4	566.4	0.00	0.00	
1,890.0	35.28	51.13	1,743.1	397.1	428.9	583.7	0.00	0.00	
1,920.0	35.28	51.13	1,767.6	408.0	442.4	601.0	0.00	0.00	
1,950.0	35.28	51.13	1,792.1	418.9	455.8	618.3	0.00	0.00	
1,980.0	35.28	51.13	1,816.6	429.8	469.3	635.7	0.00	0.00	
2,010.0	35.28	51.13	1,841.1	440.6	482.8	653.0	0.00	0.00	
2,040.0	35.28	51.13	1,865.5	451.5	496.3	670.3	0.00	0.00	
2,070.0	35.28	51.13	1,890.0	462.4	509.8	687.6	0.00	0.00	
2,100.0	35.28	51.13	1,914.5	473.3	523.3	705.0	0.00	0.00	
2,130.0	35.28	51.13	1,939.0	484.1	536.8	722.3	0.00	0.00	
2,160.0	35.28	51.13	1,963.5	495.0	550.3	739.6	0.00	0.00	
2,190.0	35.28	51.13	1,988.0	505.9	563.8	756.9	0.00	0.00	
2,220.0	35.28	51.13	2,012.5	516.8	577.3	774.3	0.00	0.00	
2,250.0	35.28	51.13	2,037.0	527.6	590.7	791.6	0.00	0.00	
2,280.0	35.28	51.13	2,061.5	538.5	604.2	808.9	0.00	0.00	
2,310.0	35.28	51.13	2,086.0	549.4	617.7	826.3	0.00	0.00	
2,340.0	35.28	51.13	2,110.4	560.3	631.2	843.6	0.00	0.00	
2,370.0	35.28	51.13	2,134.9	571.1	644.7	860.9	0.00	0.00	
2,400.0	35.28	51.13	2,159.4	582.0	658.2	878.2	0.00	0.00	
2,430.0	35.28	51.13	2,183.9	592.9	671.7	895.6	0.00	0.00	
2,460.0	35.28	51.13	2,208.4	603.8	685.2	912.9	0.00	0.00	
2,490.0	35.28	51.13	2,232.9	614.6	698.7	930.2	0.00	0.00	

Targets										
Target Name	Dip Angle (°)	Dip Dir. (°)	TVD (ft)	+N/-S (ft)	+E/-W (ft)	Northing (ft)	Easting (ft)	Latitude	Longitude	
O04 696 MF11A-3 TGT - hit/miss target - Shape	0.00	0.00	5,514.0	1,802.0	2,171.5	1,637,782.53	2,266,991.16	39° 33' 20.49 N	108° 6' 0.18 W	
- plan misses target center by 3787.4ft at 2490.0ft MD (2232.9 TVD, 614.6 N, 698.7 E)										
- Point										
O04 696 MF11A-3 BHL - hit/miss target - Shape	0.00	0.00	8,474.0	1,792.0	2,154.7	1,637,773.01	2,266,974.04	39° 33' 20.39 N	108° 6' 0.40 W	
- plan misses target center by 6515.9ft at 2490.0ft MD (2232.9 TVD, 614.6 N, 698.7 E)										
- Rectangle (sides W30.0 H50.0 D0.0)										

Planning Report

Database:	USA EDM 5000 US Multi Users DB	Local Co-ordinate Reference:	Well NP MF11A-3 O04 696 (was 12C-3)
Company:	EnCana Oil & Gas (USA) Inc	TVD Reference:	WELL @ 6044.0ft (Original Well Elev)
Project:	North Piceance	MD Reference:	WELL @ 6044.0ft (Original Well Elev)
Site:	O04 696 (3rd)	North Reference:	True
Well:	NP MF11A-3 O04 696 (was 12C-3)	Survey Calculation Method:	Minimum Curvature
Wellbore:	DD		
Design:	Plan #2		

Planned Survey									
Measured Depth (ft)	Inclination (°)	Azimuth (°)	Vertical Depth (ft)	+N/-S (ft)	+E/-W (ft)	Vertical Section (ft)	Dogleg Rate (°/100ft)	Build Rate (°/100ft)	Comments / Formations
2,500.0	35.28	51.13	2,241.1	618.3	703.2	936.0	0.00	0.00	
2,600.0	35.28	51.13	2,322.7	654.5	748.1	993.7	0.00	0.00	
2,700.0	35.28	51.13	2,404.3	690.8	793.1	1,051.5	0.00	0.00	
2,800.0	35.28	51.13	2,486.0	727.0	838.1	1,109.2	0.00	0.00	
2,900.0	35.28	51.13	2,567.6	763.3	883.0	1,167.0	0.00	0.00	
3,000.0	35.28	51.13	2,649.2	799.5	928.0	1,224.7	0.00	0.00	
3,100.0	35.28	51.13	2,730.8	835.8	973.0	1,282.5	0.00	0.00	
3,200.0	35.28	51.13	2,812.5	872.0	1,017.9	1,340.2	0.00	0.00	
3,300.0	35.28	51.13	2,894.1	908.3	1,062.9	1,398.0	0.00	0.00	
3,400.0	35.28	51.13	2,975.7	944.5	1,107.9	1,455.7	0.00	0.00	
3,500.0	35.28	51.13	3,057.4	980.8	1,152.8	1,513.5	0.00	0.00	
3,600.0	35.28	51.13	3,139.0	1,017.0	1,197.8	1,571.3	0.00	0.00	
3,700.0	35.28	51.13	3,220.6	1,053.3	1,242.8	1,629.0	0.00	0.00	
3,800.0	35.28	51.13	3,302.3	1,089.5	1,287.7	1,686.8	0.00	0.00	
3,900.0	35.28	51.13	3,383.9	1,125.8	1,332.7	1,744.5	0.00	0.00	
4,000.0	35.28	51.13	3,465.5	1,162.0	1,377.7	1,802.3	0.00	0.00	
4,100.0	35.28	51.13	3,547.2	1,198.3	1,422.6	1,860.0	0.00	0.00	
4,200.0	35.28	51.13	3,628.8	1,234.5	1,467.6	1,917.8	0.00	0.00	
4,300.0	35.28	51.13	3,710.4	1,270.8	1,512.6	1,975.5	0.00	0.00	
4,400.0	35.28	51.13	3,792.1	1,307.0	1,557.5	2,033.3	0.00	0.00	
4,500.0	35.28	51.13	3,873.7	1,343.3	1,602.5	2,091.0	0.00	0.00	
4,600.0	35.28	51.13	3,955.3	1,379.5	1,647.5	2,148.8	0.00	0.00	
4,700.0	35.28	51.13	4,037.0	1,415.8	1,692.4	2,206.5	0.00	0.00	
4,800.0	35.28	51.13	4,118.6	1,452.0	1,737.4	2,264.3	0.00	0.00	
4,900.0	35.28	51.13	4,200.2	1,488.3	1,782.4	2,322.0	0.00	0.00	
5,000.0	35.28	51.13	4,281.9	1,524.5	1,827.3	2,379.8	0.00	0.00	
5,100.0	35.28	51.13	4,363.5	1,560.8	1,872.3	2,437.5	0.00	0.00	
5,158.0	35.28	51.13	4,410.8	1,581.8	1,898.4	2,471.0	0.00	0.00	Start Drop -3.00
5,200.0	34.02	51.13	4,445.4	1,596.8	1,917.0	2,494.9	3.00	-3.00	
5,300.0	31.02	51.13	4,529.7	1,630.5	1,958.8	2,548.7	3.00	-3.00	
5,400.0	28.02	51.13	4,616.7	1,661.5	1,997.2	2,597.9	3.00	-3.00	
5,500.0	25.02	51.13	4,706.2	1,689.5	2,031.9	2,642.6	3.00	-3.00	
5,600.0	22.02	51.13	4,797.9	1,714.5	2,063.0	2,682.5	3.00	-3.00	
5,700.0	19.02	51.13	4,891.5	1,736.5	2,090.3	2,717.5	3.00	-3.00	
5,786.6	16.42	51.13	4,974.0	1,753.1	2,110.8	2,743.9	3.00	-3.00	Williams Fork
5,800.0	16.02	51.13	4,986.8	1,755.4	2,113.7	2,747.6	3.00	-3.00	
5,828.2	15.18	51.13	5,014.0	1,760.2	2,119.6	2,755.2	3.00	-3.00	Top of Gas; Inc=15°
5,900.0	13.02	51.13	5,083.6	1,771.2	2,133.3	2,772.7	3.00	-3.00	
6,000.0	10.02	51.13	5,181.6	1,783.7	2,148.8	2,792.7	3.00	-3.00	
6,100.0	7.02	51.13	5,280.5	1,793.0	2,160.3	2,807.5	3.00	-3.00	
6,200.0	4.02	51.13	5,380.0	1,799.0	2,167.8	2,817.1	3.00	-3.00	
6,300.0	1.02	51.13	5,479.9	1,801.8	2,171.3	2,821.5	3.00	-3.00	
6,334.1	0.00	51.13	5,514.0	1,802.0	2,171.5	2,821.8	3.00	-3.00	EOD; Inc=0° - O04 696 MF11A-3 TGT (6.13.11)
6,400.0	0.16	239.30	5,579.9	1,802.0	2,171.4	2,821.7	0.25	0.25	
6,489.8	0.39	239.30	5,669.8	1,801.7	2,171.0	2,821.3	0.25	0.25	
6,500.0	0.39	239.30	5,679.9	1,801.7	2,171.0	2,821.2	0.00	0.00	
6,600.0	0.39	239.30	5,779.9	1,801.3	2,170.4	2,820.5	0.00	0.00	
6,700.0	0.39	239.30	5,879.9	1,801.0	2,169.8	2,819.9	0.00	0.00	
6,800.0	0.39	239.30	5,979.9	1,800.7	2,169.2	2,819.2	0.00	0.00	
6,900.0	0.39	239.30	6,079.9	1,800.3	2,168.6	2,818.5	0.00	0.00	
7,000.0	0.39	239.30	6,179.9	1,800.0	2,168.1	2,817.9	0.00	0.00	
7,100.0	0.39	239.30	6,279.9	1,799.6	2,167.5	2,817.2	0.00	0.00	

Planning Report

Database:	USA EDM 5000 US Multi Users DB	Local Co-ordinate Reference:	Well NP MF11A-3 O04 696 (was 12C-3)
Company:	EnCana Oil & Gas (USA) Inc	TVD Reference:	WELL @ 6044.0ft (Original Well Elev)
Project:	North Piceance	MD Reference:	WELL @ 6044.0ft (Original Well Elev)
Site:	O04 696 (3rd)	North Reference:	True
Well:	NP MF11A-3 O04 696 (was 12C-3)	Survey Calculation Method:	Minimum Curvature
Wellbore:	DD		
Design:	Plan #2		

Planned Survey									
Measured Depth (ft)	Inclination (°)	Azimuth (°)	Vertical Depth (ft)	+N/-S (ft)	+E/-W (ft)	Vertical Section (ft)	Dogleg Rate (°/100ft)	Build Rate (°/100ft)	Comments / Formations
7,200.0	0.39	239.30	6,379.9	1,799.3	2,166.9	2,816.5	0.00	0.00	
7,300.0	0.39	239.30	6,479.9	1,798.9	2,166.3	2,815.8	0.00	0.00	
7,400.0	0.39	239.30	6,579.9	1,798.6	2,165.7	2,815.2	0.00	0.00	
7,500.0	0.39	239.30	6,679.9	1,798.2	2,165.1	2,814.5	0.00	0.00	
7,600.0	0.39	239.30	6,779.9	1,797.9	2,164.6	2,813.8	0.00	0.00	
7,700.0	0.39	239.30	6,879.9	1,797.5	2,164.0	2,813.2	0.00	0.00	
7,800.0	0.39	239.30	6,979.9	1,797.2	2,163.4	2,812.5	0.00	0.00	
7,900.0	0.39	239.30	7,079.9	1,796.8	2,162.8	2,811.8	0.00	0.00	
8,000.0	0.39	239.30	7,179.9	1,796.5	2,162.2	2,811.2	0.00	0.00	
8,100.0	0.39	239.30	7,279.9	1,796.1	2,161.6	2,810.5	0.00	0.00	
8,200.0	0.39	239.30	7,379.9	1,795.8	2,161.1	2,809.8	0.00	0.00	
8,300.0	0.39	239.30	7,479.9	1,795.4	2,160.5	2,809.1	0.00	0.00	
8,400.0	0.39	239.30	7,579.9	1,795.1	2,159.9	2,808.5	0.00	0.00	
8,500.0	0.39	239.30	7,679.9	1,794.8	2,159.3	2,807.8	0.00	0.00	
8,600.0	0.39	239.30	7,779.9	1,794.4	2,158.7	2,807.1	0.00	0.00	
8,700.0	0.39	239.30	7,879.9	1,794.1	2,158.1	2,806.5	0.00	0.00	
8,800.0	0.39	239.30	7,979.9	1,793.7	2,157.5	2,805.8	0.00	0.00	
8,900.0	0.39	239.30	8,079.9	1,793.4	2,157.0	2,805.1	0.00	0.00	
9,000.0	0.39	239.30	8,179.8	1,793.0	2,156.4	2,804.4	0.00	0.00	
9,100.0	0.39	239.30	8,279.8	1,792.7	2,155.8	2,803.8	0.00	0.00	
9,200.0	0.39	239.30	8,379.8	1,792.3	2,155.2	2,803.1	0.00	0.00	
9,294.2	0.39	239.30	8,474.0	1,792.0	2,154.7	2,802.5	0.00	0.00	Rollins - O04 696 MF11A-3 BHL (6.13.11)
9,300.0	0.39	239.30	8,479.8	1,792.0	2,154.6	2,802.4	0.00	0.00	
9,400.0	0.39	239.30	8,579.8	1,791.6	2,154.0	2,801.8	0.00	0.00	
9,444.2	0.39	239.30	8,624.0	1,791.5	2,153.8	2,801.5	0.00	0.00	Drillers TD @ 8624' TVD
9,500.0	0.39	239.30	8,679.8	1,791.3	2,153.5	2,801.1	0.00	0.00	
9,600.0	0.39	239.30	8,779.8	1,790.9	2,152.9	2,800.4	0.00	0.00	
9,700.0	0.39	239.30	8,879.8	1,790.6	2,152.3	2,799.7	0.00	0.00	
9,800.0	0.39	239.30	8,979.8	1,790.2	2,151.7	2,799.1	0.00	0.00	
9,900.0	0.39	239.30	9,079.8	1,789.9	2,151.1	2,798.4	0.00	0.00	
10,000.0	0.39	239.30	9,179.8	1,789.6	2,150.5	2,797.7	0.00	0.00	
10,100.0	0.39	239.30	9,279.8	1,789.2	2,149.9	2,797.1	0.00	0.00	
10,200.0	0.39	239.30	9,379.8	1,788.9	2,149.4	2,796.4	0.00	0.00	
10,300.0	0.39	239.30	9,479.8	1,788.5	2,148.8	2,795.7	0.00	0.00	
10,400.0	0.39	239.30	9,579.8	1,788.2	2,148.2	2,795.0	0.00	0.00	
10,500.0	0.39	239.30	9,679.8	1,787.8	2,147.6	2,794.4	0.00	0.00	
10,600.0	0.39	239.30	9,779.8	1,787.5	2,147.0	2,793.7	0.00	0.00	
10,700.0	0.39	239.30	9,879.8	1,787.1	2,146.4	2,793.0	0.00	0.00	
10,800.0	0.39	239.30	9,979.8	1,786.8	2,145.9	2,792.4	0.00	0.00	
10,820.2	0.39	239.30	10,000.0	1,786.7	2,145.7	2,792.2	0.00	0.00	Permit TD @ 10000' TVD

Planning Report

Database: USA EDM 5000 US Multi Users DB	Local Co-ordinate Reference: Well NP MF11A-3 O04 696 (was 12C-3)
Company: EnCana Oil & Gas (USA) Inc	TVD Reference: WELL @ 6044.0ft (Original Well Elev)
Project: North Piceance	MD Reference: WELL @ 6044.0ft (Original Well Elev)
Site: O04 696 (3rd)	North Reference: True
Well: NP MF11A-3 O04 696 (was 12C-3)	Survey Calculation Method: Minimum Curvature
Wellbore: DD	
Design: Plan #2	

Targets									
Target Name	Dip Angle	Dip Dir.	TVD	+N/-S	+E/-W	Northing	Easting	Latitude	Longitude
- hit/miss target	(°)	(°)	(ft)	(ft)	(ft)	(ft)	(ft)		
- Shape									
O04 696 MF11A-3 TGT - plan hits target center - Point	0.00	0.00	5,514.0	1,802.0	2,171.5	1,637,782.53	2,266,991.16	39° 33' 20.49 N	108° 6' 0.18 W
O04 696 MF11A-3 BHL - plan hits target center - Rectangle (sides W30.0 H50.0 D0.0)	0.00	0.00	8,474.0	1,792.0	2,154.7	1,637,773.01	2,266,974.04	39° 33' 20.39 N	108° 6' 0.40 W

Formations					
Measured Depth	Vertical Depth	Name	Lithology	Dip	Dip Direction
(ft)	(ft)			(°)	(°)
5,786.6	4,974.0	Williams Fork		0.00	
5,828.2	5,014.0	Top of Gas; Inc=15°		0.00	
9,294.2	8,474.0	Rollins		0.00	

Plan Annotations					
Measured Depth	Vertical Depth	Local Coordinates		Comment	
(ft)	(ft)	+N/-S (ft)	+E/-W (ft)		
300.0	300.0	0.0	0.0	KOP @ 300'	
1,502.3	1,426.6	88.2	74.0	EOB; Inc=35.28°	
5,158.0	4,410.9	256.6	254.5	Start Drop -3.00	
6,334.1	5,514.0	1,581.8	1,898.4	EOD; Inc=0°	
9,444.2	8,624.0	1,802.0	2,171.5	Drillers TD @ 8624' TVD	
10,820.2	10,000.0	1,801.7	2,171.0	Permit TD @ 10000' TVD	