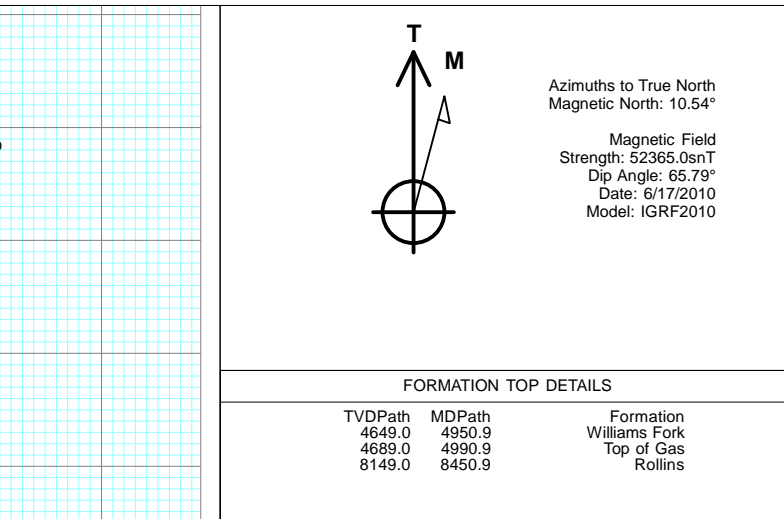
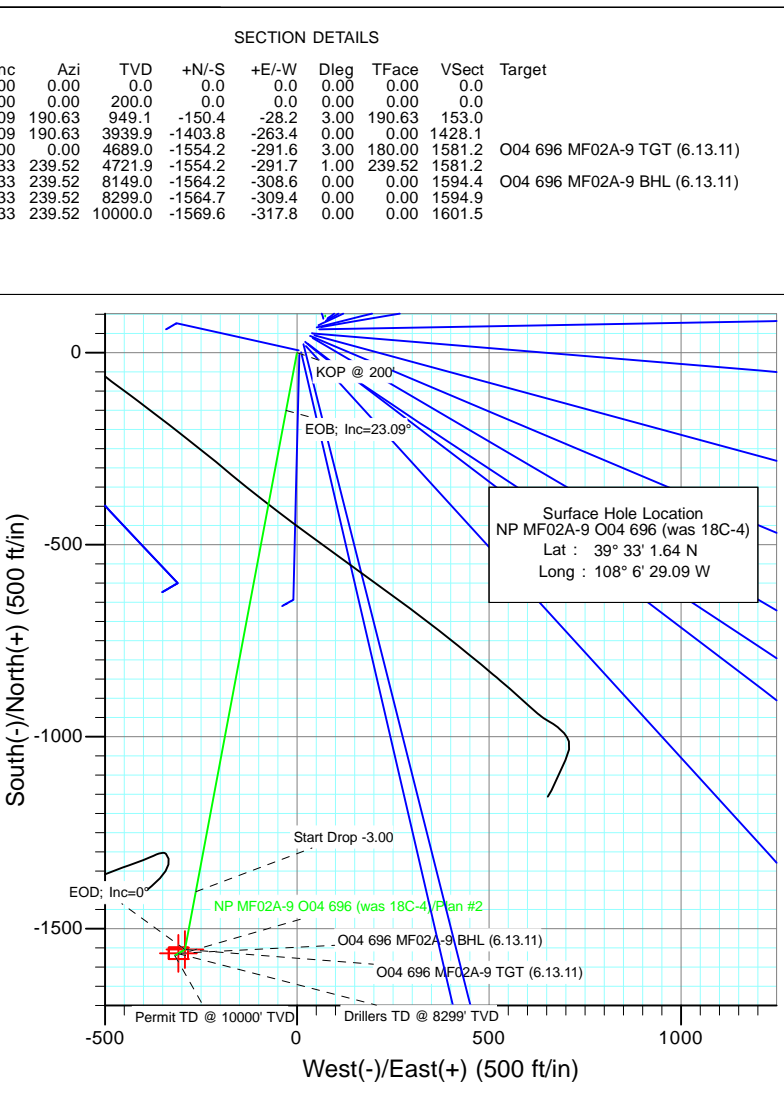
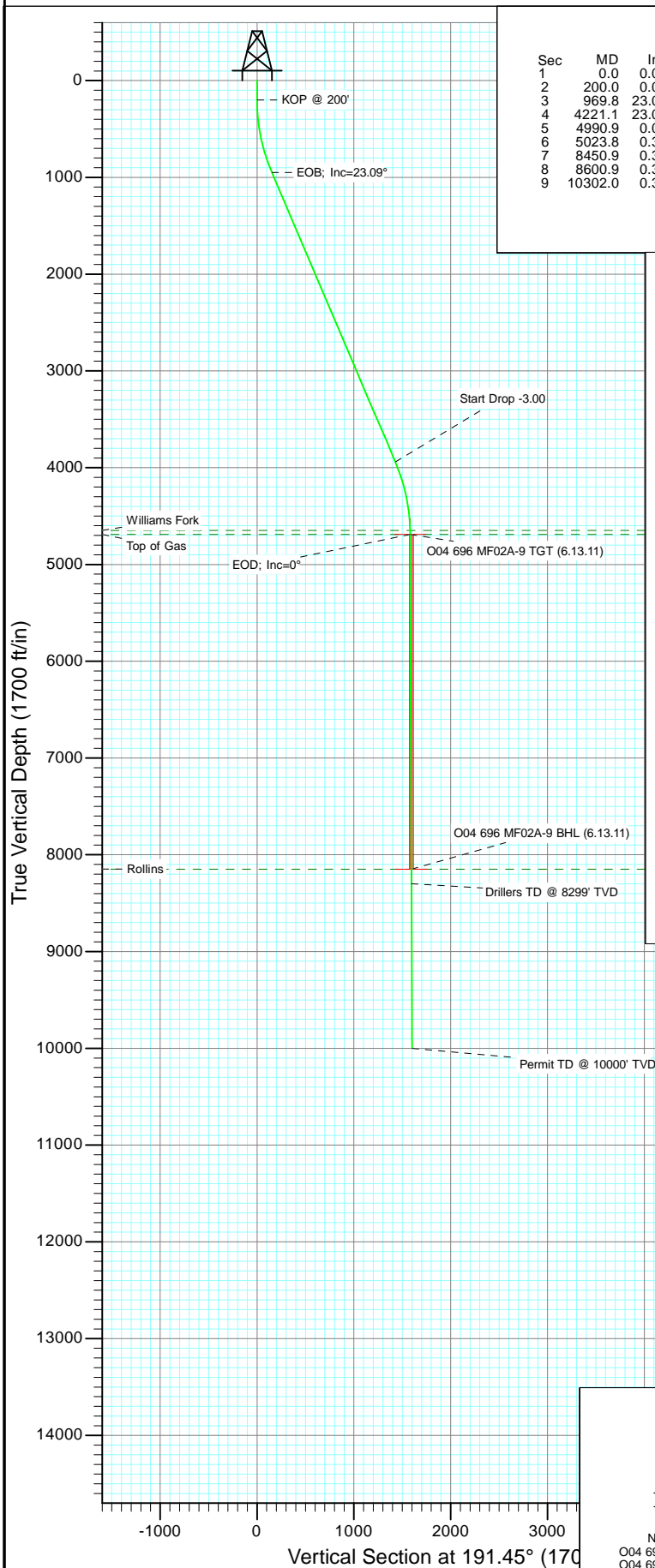




Project: North Piceance
Site: O04 696 (3rd)
Well: NP MF02A-9 O04 696 (was 18C-4)
Wellbore: DD
Design: Plan #2



Plan #2 NP MF02A-9 O04 696 (was 18C-4) 95xxx; LR KB MF18C-4 @ 6044.0ft (Original Well Elev) North American Datum 1983 Well NP MF02A-9 O04 696 (was 18C-4), True North							
Type TD	Target No Target (Freehand)	191.45	Origin Type Slot	N/S 0.0	E/W 0.0	From TVD 0.0	
Name	TVD	+N/-S	+E/-W	Latitude	Longitude		
O04 696 MF02A-9 TGT (6.13.11)	4689.0	-1554.2	-291.6	39° 32' 46.28 N	108° 6' 32.81 W		
O04 696 MF02A-9 BHL (6.13.11)	8149.0	-1564.2	-308.6	39° 32' 46.18 N	108° 6' 33.03 W		

Planning Report

Database:	USA EDM 5000 US Multi Users DB	Local Co-ordinate Reference:	Well NP MF02A-9 O04 696 (was 18C-4)
Company:	EnCana Oil & Gas (USA) Inc	TVD Reference:	KB MF18C-4 @ 6044.0ft (Original Well Elev)
Project:	North Piceance	MD Reference:	KB MF18C-4 @ 6044.0ft (Original Well Elev)
Site:	O04 696 (3rd)	North Reference:	True
Well:	NP MF02A-9 O04 696 (was 18C-4)	Survey Calculation Method:	Minimum Curvature
Wellbore:	DD		
Design:	Plan #2		

Project	North Piceance		
Map System:	US State Plane 1983	System Datum:	Mean Sea Level
Geo Datum:	North American Datum 1983		
Map Zone:	Colorado Central Zone		

Site	O04 696 (3rd)			
Site Position:		Northing:	1,635,941.08 ft	Latitude: 39° 33' 1.64 N
From:	Lat/Long	Easting:	2,264,673.43 ft	Longitude: 108° 6' 29.09 W
Position Uncertainty:	0.0 ft	Slot Radius:	13.200 in	Grid Convergence: -1.64 °

Well	NP MF02A-9 O04 696 (was 18C-4)			
Well Position	+N/-S	0.0 ft	Northing:	1,635,941.07 ft
	+E/-W	0.0 ft	Easting:	2,264,673.43 ft
Position Uncertainty		0.0 ft	Wellhead Elevation:	ft
			Ground Level:	6,022.0 ft

Wellbore	DD				
Magnetics	Model Name	Sample Date	Declination (°)	Dip Angle (°)	Field Strength (nT)
	IGRF2010	6/17/2010	10.54	65.79	52,365

Design	Plan #2			
Audit Notes:				
Version:	Phase:	PLAN	Tie On Depth:	0.0
Vertical Section:	Depth From (TVD) (ft)	+N/-S (ft)	+E/-W (ft)	Direction (°)
	0.0	0.0	0.0	191.45

Plan Sections										
Measured Depth (ft)	Inclination (°)	Azimuth (°)	Vertical Depth (ft)	+N/-S (ft)	+E/-W (ft)	Dogleg Rate (°/100ft)	Build Rate (°/100ft)	Turn Rate (°/100ft)	TFO (°)	Target
0.0	0.00	0.00	0.0	0.0	0.0	0.00	0.00	0.00	0.00	
200.0	0.00	0.00	200.0	0.0	0.0	0.00	0.00	0.00	0.00	
969.8	23.09	190.63	949.1	-150.4	-28.2	3.00	3.00	0.00	190.63	
4,221.1	23.09	190.63	3,939.9	-1,403.8	-263.4	0.00	0.00	0.00	0.00	
4,990.9	0.00	0.00	4,689.0	-1,554.2	-291.6	3.00	-3.00	0.00	180.00	O04 696 MF02A-9 TC
5,023.8	0.33	239.52	4,721.9	-1,554.2	-291.7	1.00	1.00	-366.37	239.52	
8,450.9	0.33	239.52	8,149.0	-1,564.2	-308.6	0.00	0.00	0.00	0.00	O04 696 MF02A-9 B+
8,600.9	0.33	239.52	8,299.0	-1,564.7	-309.4	0.00	0.00	0.00	0.00	
10,302.0	0.33	239.52	10,000.0	-1,569.6	-317.8	0.00	0.00	0.00	0.00	

Planning Report

Database: USA EDM 5000 US Multi Users DB
Company: EnCana Oil & Gas (USA) Inc
Project: North Piceance
Site: O04 696 (3rd)
Well: NP MF02A-9 O04 696 (was 18C-4)
Wellbore: DD
Design: Plan #2

Local Co-ordinate Reference:
TVD Reference:
MD Reference:
North Reference:
Survey Calculation Method:

Well NP MF02A-9 O04 696 (was 18C-4)
 KB MF18C-4 @ 6044.0ft (Original Well Elev)
 KB MF18C-4 @ 6044.0ft (Original Well Elev)
 True
 Minimum Curvature

Planned Survey

Measured Depth (ft)	Inclination (°)	Azimuth (°)	Vertical Depth (ft)	+N/-S (ft)	+E/-W (ft)	Vertical Section (ft)	Dogleg Rate (°/100ft)	Build Rate (°/100ft)	Comments / Formations
0.0	0.00	0.00	0.0	0.0	0.0	0.0	0.00	0.00	
30.0	0.00	0.00	30.0	0.0	0.0	0.0	0.00	0.00	
60.0	0.00	0.00	60.0	0.0	0.0	0.0	0.00	0.00	
90.0	0.00	0.00	90.0	0.0	0.0	0.0	0.00	0.00	
120.0	0.00	0.00	120.0	0.0	0.0	0.0	0.00	0.00	
150.0	0.00	0.00	150.0	0.0	0.0	0.0	0.00	0.00	
180.0	0.00	0.00	180.0	0.0	0.0	0.0	0.00	0.00	
200.0	0.00	0.00	200.0	0.0	0.0	0.0	0.00	0.00	KOP @ 200'
210.0	0.30	190.63	210.0	0.0	0.0	0.0	3.00	3.00	
240.0	1.20	190.63	240.0	-0.4	-0.1	0.4	3.00	3.00	
270.0	2.10	190.63	270.0	-1.3	-0.2	1.3	3.00	3.00	
300.0	3.00	190.63	300.0	-2.6	-0.5	2.6	3.00	3.00	
330.0	3.90	190.63	329.9	-4.3	-0.8	4.4	3.00	3.00	
360.0	4.80	190.63	359.8	-6.6	-1.2	6.7	3.00	3.00	
390.0	5.70	190.63	389.7	-9.3	-1.7	9.4	3.00	3.00	
420.0	6.60	190.63	419.5	-12.4	-2.3	12.7	3.00	3.00	
450.0	7.50	190.63	449.3	-16.1	-3.0	16.3	3.00	3.00	
480.0	8.40	190.63	479.0	-20.1	-3.8	20.5	3.00	3.00	
510.0	9.30	190.63	508.6	-24.7	-4.6	25.1	3.00	3.00	
540.0	10.20	190.63	538.2	-29.7	-5.6	30.2	3.00	3.00	
570.0	11.10	190.63	567.7	-35.1	-6.6	35.7	3.00	3.00	
600.0	12.00	190.63	597.1	-41.0	-7.7	41.7	3.00	3.00	
630.0	12.90	190.63	626.4	-47.4	-8.9	48.2	3.00	3.00	
660.0	13.80	190.63	655.6	-54.2	-10.2	55.1	3.00	3.00	
690.0	14.70	190.63	684.6	-61.4	-11.5	62.5	3.00	3.00	
720.0	15.60	190.63	713.6	-69.1	-13.0	70.3	3.00	3.00	
750.0	16.50	190.63	742.4	-77.3	-14.5	78.6	3.00	3.00	
780.0	17.40	190.63	771.1	-85.9	-16.1	87.4	3.00	3.00	
810.0	18.30	190.63	799.7	-94.9	-17.8	96.6	3.00	3.00	
840.0	19.20	190.63	828.1	-104.4	-19.6	106.2	3.00	3.00	
870.0	20.10	190.63	856.3	-114.3	-21.5	116.3	3.00	3.00	
900.0	21.00	190.63	884.4	-124.7	-23.4	126.8	3.00	3.00	
930.0	21.90	190.63	912.4	-135.5	-25.4	137.8	3.00	3.00	
960.0	22.80	190.63	940.1	-146.7	-27.5	149.2	3.00	3.00	
969.8	23.09	190.63	949.1	-150.4	-28.2	153.0	3.00	3.00	EOB; Inc=23.09°
990.0	23.09	190.63	967.7	-158.2	-29.7	161.0	0.00	0.00	
1,020.0	23.09	190.63	995.3	-169.8	-31.9	172.7	0.00	0.00	
1,050.0	23.09	190.63	1,022.9	-181.3	-34.0	184.5	0.00	0.00	
1,080.0	23.09	190.63	1,050.5	-192.9	-36.2	196.3	0.00	0.00	
1,110.0	23.09	190.63	1,078.1	-204.5	-38.4	208.0	0.00	0.00	
1,140.0	23.09	190.63	1,105.7	-216.0	-40.5	219.8	0.00	0.00	
1,170.0	23.09	190.63	1,133.3	-227.6	-42.7	231.6	0.00	0.00	
1,200.0	23.09	190.63	1,160.9	-239.2	-44.9	243.3	0.00	0.00	
1,230.0	23.09	190.63	1,188.5	-250.7	-47.0	255.1	0.00	0.00	
1,260.0	23.09	190.63	1,216.1	-262.3	-49.2	266.8	0.00	0.00	
1,290.0	23.09	190.63	1,243.7	-273.9	-51.4	278.6	0.00	0.00	
1,320.0	23.09	190.63	1,271.3	-285.4	-53.6	290.4	0.00	0.00	
1,350.0	23.09	190.63	1,298.9	-297.0	-55.7	302.1	0.00	0.00	
1,380.0	23.09	190.63	1,326.5	-308.6	-57.9	313.9	0.00	0.00	
1,410.0	23.09	190.63	1,354.1	-320.1	-60.1	325.7	0.00	0.00	
1,440.0	23.09	190.63	1,381.6	-331.7	-62.2	337.4	0.00	0.00	
1,470.0	23.09	190.63	1,409.2	-343.3	-64.4	349.2	0.00	0.00	

Planning Report

Database: USA EDM 5000 US Multi Users DB
Company: EnCana Oil & Gas (USA) Inc
Project: North Piceance
Site: O04 696 (3rd)
Well: NP MF02A-9 O04 696 (was 18C-4)
Wellbore: DD
Design: Plan #2

Local Co-ordinate Reference:
TVD Reference:
MD Reference:
North Reference:
Survey Calculation Method:

Well NP MF02A-9 O04 696 (was 18C-4)
 KB MF18C-4 @ 6044.0ft (Original Well Elev)
 KB MF18C-4 @ 6044.0ft (Original Well Elev)
 True
 Minimum Curvature

Planned Survey

Measured Depth (ft)	Inclination (°)	Azimuth (°)	Vertical Depth (ft)	+N/-S (ft)	+E/-W (ft)	Vertical Section (ft)	Dogleg Rate (°/100ft)	Build Rate (°/100ft)	Comments / Formations
1,500.0	23.09	190.63	1,436.8	-354.8	-66.6	361.0	0.00	0.00	
1,530.0	23.09	190.63	1,464.4	-366.4	-68.7	372.7	0.00	0.00	
1,560.0	23.09	190.63	1,492.0	-377.9	-70.9	384.5	0.00	0.00	
1,590.0	23.09	190.63	1,519.6	-389.5	-73.1	396.3	0.00	0.00	
1,620.0	23.09	190.63	1,547.2	-401.1	-75.2	408.0	0.00	0.00	
1,650.0	23.09	190.63	1,574.8	-412.6	-77.4	419.8	0.00	0.00	
1,680.0	23.09	190.63	1,602.4	-424.2	-79.6	431.6	0.00	0.00	
1,710.0	23.09	190.63	1,630.0	-435.8	-81.8	443.3	0.00	0.00	
1,740.0	23.09	190.63	1,657.6	-447.3	-83.9	455.1	0.00	0.00	
1,770.0	23.09	190.63	1,685.2	-458.9	-86.1	466.9	0.00	0.00	
1,800.0	23.09	190.63	1,712.8	-470.5	-88.3	478.6	0.00	0.00	
1,830.0	23.09	190.63	1,740.4	-482.0	-90.4	490.4	0.00	0.00	
1,860.0	23.09	190.63	1,768.0	-493.6	-92.6	502.2	0.00	0.00	
1,890.0	23.09	190.63	1,795.6	-505.2	-94.8	513.9	0.00	0.00	
1,920.0	23.09	190.63	1,823.2	-516.7	-96.9	525.7	0.00	0.00	
1,950.0	23.09	190.63	1,850.8	-528.3	-99.1	537.5	0.00	0.00	
1,980.0	23.09	190.63	1,878.4	-539.9	-101.3	549.2	0.00	0.00	
2,010.0	23.09	190.63	1,906.0	-551.4	-103.5	561.0	0.00	0.00	
2,040.0	23.09	190.63	1,933.6	-563.0	-105.6	572.7	0.00	0.00	
2,070.0	23.09	190.63	1,961.2	-574.5	-107.8	584.5	0.00	0.00	
2,100.0	23.09	190.63	1,988.8	-586.1	-110.0	596.3	0.00	0.00	
2,130.0	23.09	190.63	2,016.4	-597.7	-112.1	608.0	0.00	0.00	
2,160.0	23.09	190.63	2,044.0	-609.2	-114.3	619.8	0.00	0.00	
2,190.0	23.09	190.63	2,071.6	-620.8	-116.5	631.6	0.00	0.00	
2,220.0	23.09	190.63	2,099.1	-632.4	-118.6	643.3	0.00	0.00	
2,250.0	23.09	190.63	2,126.7	-643.9	-120.8	655.1	0.00	0.00	
2,280.0	23.09	190.63	2,154.3	-655.5	-123.0	666.9	0.00	0.00	
2,310.0	23.09	190.63	2,181.9	-667.1	-125.2	678.6	0.00	0.00	
2,340.0	23.09	190.63	2,209.5	-678.6	-127.3	690.4	0.00	0.00	
2,370.0	23.09	190.63	2,237.1	-690.2	-129.5	702.2	0.00	0.00	
2,400.0	23.09	190.63	2,264.7	-701.8	-131.7	713.9	0.00	0.00	
2,430.0	23.09	190.63	2,292.3	-713.3	-133.8	725.7	0.00	0.00	
2,460.0	23.09	190.63	2,319.9	-724.9	-136.0	737.5	0.00	0.00	
2,490.0	23.09	190.63	2,347.5	-736.5	-138.2	749.2	0.00	0.00	

Targets

Target Name	Dip Angle (°)	Dip Dir. (°)	TVD (ft)	+N/-S (ft)	+E/-W (ft)	Northing (ft)	Easting (ft)	Latitude	Longitude
- hit/miss target - Shape									
O04 696 MF02A-9 TGT - plan misses target center by 2484.9ft at 2490.0ft MD (2347.5 TVD, -736.5 N, -138.2 E) - Point	0.00	0.00	4,689.0	-1,554.2	-291.6	1,634,395.88	2,264,337.33	39° 32' 46.28 N	108° 6' 32.81 W
O04 696 MF02A-9 BHL - plan misses target center by 5862.7ft at 2490.0ft MD (2347.5 TVD, -736.5 N, -138.2 E) - Rectangle (sides W30.0 H50.0 D0.0)	0.00	0.00	8,149.0	-1,564.2	-308.6	1,634,386.35	2,264,320.02	39° 32' 46.18 N	108° 6' 33.03 W

Planning Report

Database: USA EDM 5000 US Multi Users DB
Company: EnCana Oil & Gas (USA) Inc
Project: North Piceance
Site: O04 696 (3rd)
Well: NP MF02A-9 O04 696 (was 18C-4)
Wellbore: DD
Design: Plan #2

Local Co-ordinate Reference: Well NP MF02A-9 O04 696 (was 18C-4)
TVD Reference: KB MF18C-4 @ 6044.0ft (Original Well Elev)
MD Reference: KB MF18C-4 @ 6044.0ft (Original Well Elev)
North Reference: True
Survey Calculation Method: Minimum Curvature

Planned Survey

Measured Depth (ft)	Inclination (°)	Azimuth (°)	Vertical Depth (ft)	+N/-S (ft)	+E/-W (ft)	Vertical Section (ft)	Dogleg Rate (°/100ft)	Build Rate (°/100ft)	Comments / Formations
2,500.0	23.09	190.63	2,356.7	-740.3	-138.9	753.2	0.00	0.00	
2,600.0	23.09	190.63	2,448.7	-778.9	-146.1	792.4	0.00	0.00	
2,700.0	23.09	190.63	2,540.7	-817.4	-153.4	831.6	0.00	0.00	
2,800.0	23.09	190.63	2,632.7	-856.0	-160.6	870.8	0.00	0.00	
2,900.0	23.09	190.63	2,724.7	-894.5	-167.8	910.0	0.00	0.00	
3,000.0	23.09	190.63	2,816.6	-933.1	-175.1	949.2	0.00	0.00	
3,100.0	23.09	190.63	2,908.6	-971.6	-182.3	988.5	0.00	0.00	
3,200.0	23.09	190.63	3,000.6	-1,010.2	-189.5	1,027.7	0.00	0.00	
3,300.0	23.09	190.63	3,092.6	-1,048.7	-196.8	1,066.9	0.00	0.00	
3,400.0	23.09	190.63	3,184.6	-1,087.3	-204.0	1,106.1	0.00	0.00	
3,500.0	23.09	190.63	3,276.6	-1,125.8	-211.2	1,145.3	0.00	0.00	
3,600.0	23.09	190.63	3,368.6	-1,164.4	-218.5	1,184.5	0.00	0.00	
3,700.0	23.09	190.63	3,460.6	-1,202.9	-225.7	1,223.8	0.00	0.00	
3,800.0	23.09	190.63	3,552.5	-1,241.5	-232.9	1,263.0	0.00	0.00	
3,900.0	23.09	190.63	3,644.5	-1,280.0	-240.2	1,302.2	0.00	0.00	
4,000.0	23.09	190.63	3,736.5	-1,318.6	-247.4	1,341.4	0.00	0.00	
4,100.0	23.09	190.63	3,828.5	-1,357.1	-254.6	1,380.6	0.00	0.00	
4,200.0	23.09	190.63	3,920.5	-1,395.7	-261.9	1,419.9	0.00	0.00	
4,221.1	23.09	190.63	3,939.9	-1,403.8	-263.4	1,428.1	0.00	0.00	Start Drop -3.00
4,300.0	20.73	190.63	4,013.1	-1,432.7	-268.8	1,457.6	3.00	-3.00	
4,400.0	17.73	190.63	4,107.5	-1,465.1	-274.9	1,490.5	3.00	-3.00	
4,500.0	14.73	190.63	4,203.5	-1,492.5	-280.0	1,518.4	3.00	-3.00	
4,600.0	11.73	190.63	4,300.9	-1,515.0	-284.2	1,541.3	3.00	-3.00	
4,700.0	8.73	190.63	4,399.3	-1,532.5	-287.5	1,559.1	3.00	-3.00	
4,800.0	5.73	190.63	4,498.4	-1,544.8	-289.8	1,571.6	3.00	-3.00	
4,900.0	2.73	190.63	4,598.2	-1,552.1	-291.2	1,579.0	3.00	-3.00	
4,950.9	1.20	190.63	4,649.0	-1,553.8	-291.5	1,580.7	3.00	-3.00	Williams Fork
4,990.9	0.00	0.00	4,689.0	-1,554.2	-291.6	1,581.2	3.00	-3.00	EOD; Inc=0° - Top of Gas - O04 696 MF02A-9 1
5,000.0	0.09	239.52	4,698.1	-1,554.2	-291.6	1,581.2	1.00	1.00	
5,023.8	0.33	239.52	4,721.9	-1,554.2	-291.7	1,581.2	1.00	1.00	
5,100.0	0.33	239.52	4,798.1	-1,554.5	-292.1	1,581.5	0.00	0.00	
5,200.0	0.33	239.52	4,898.1	-1,554.8	-292.6	1,581.9	0.00	0.00	
5,300.0	0.33	239.52	4,998.1	-1,555.1	-293.0	1,582.3	0.00	0.00	
5,400.0	0.33	239.52	5,098.1	-1,555.3	-293.5	1,582.7	0.00	0.00	
5,500.0	0.33	239.52	5,198.1	-1,555.6	-294.0	1,583.0	0.00	0.00	
5,600.0	0.33	239.52	5,298.1	-1,555.9	-294.5	1,583.4	0.00	0.00	
5,700.0	0.33	239.52	5,398.1	-1,556.2	-295.0	1,583.8	0.00	0.00	
5,800.0	0.33	239.52	5,498.1	-1,556.5	-295.5	1,584.2	0.00	0.00	
5,900.0	0.33	239.52	5,598.1	-1,556.8	-296.0	1,584.6	0.00	0.00	
6,000.0	0.33	239.52	5,698.1	-1,557.1	-296.5	1,585.0	0.00	0.00	
6,100.0	0.33	239.52	5,798.1	-1,557.4	-297.0	1,585.3	0.00	0.00	
6,200.0	0.33	239.52	5,898.1	-1,557.7	-297.5	1,585.7	0.00	0.00	
6,300.0	0.33	239.52	5,998.1	-1,558.0	-298.0	1,586.1	0.00	0.00	
6,400.0	0.33	239.52	6,098.1	-1,558.3	-298.5	1,586.5	0.00	0.00	
6,500.0	0.33	239.52	6,198.1	-1,558.5	-299.0	1,586.9	0.00	0.00	
6,600.0	0.33	239.52	6,298.1	-1,558.8	-299.5	1,587.3	0.00	0.00	
6,700.0	0.33	239.52	6,398.1	-1,559.1	-300.0	1,587.6	0.00	0.00	
6,800.0	0.33	239.52	6,498.1	-1,559.4	-300.5	1,588.0	0.00	0.00	
6,900.0	0.33	239.52	6,598.1	-1,559.7	-301.0	1,588.4	0.00	0.00	
7,000.0	0.33	239.52	6,698.1	-1,560.0	-301.5	1,588.8	0.00	0.00	
7,100.0	0.33	239.52	6,798.1	-1,560.3	-302.0	1,589.2	0.00	0.00	
7,200.0	0.33	239.52	6,898.1	-1,560.6	-302.4	1,589.6	0.00	0.00	

Planning Report

Database:	USA EDM 5000 US Multi Users DB	Local Co-ordinate Reference:	Well NP MF02A-9 O04 696 (was 18C-4)
Company:	EnCana Oil & Gas (USA) Inc	TVD Reference:	KB MF18C-4 @ 6044.0ft (Original Well Elev)
Project:	North Piceance	MD Reference:	KB MF18C-4 @ 6044.0ft (Original Well Elev)
Site:	O04 696 (3rd)	North Reference:	True
Well:	NP MF02A-9 O04 696 (was 18C-4)	Survey Calculation Method:	Minimum Curvature
Wellbore:	DD		
Design:	Plan #2		

Planned Survey

Measured Depth (ft)	Inclination (°)	Azimuth (°)	Vertical Depth (ft)	+N/-S (ft)	+E/-W (ft)	Vertical Section (ft)	Dogleg Rate (°/100ft)	Build Rate (°/100ft)	Comments / Formations
7,300.0	0.33	239.52	6,998.1	-1,560.9	-302.9	1,589.9	0.00	0.00	
7,400.0	0.33	239.52	7,098.1	-1,561.2	-303.4	1,590.3	0.00	0.00	
7,500.0	0.33	239.52	7,198.1	-1,561.5	-303.9	1,590.7	0.00	0.00	
7,600.0	0.33	239.52	7,298.1	-1,561.7	-304.4	1,591.1	0.00	0.00	
7,700.0	0.33	239.52	7,398.1	-1,562.0	-304.9	1,591.5	0.00	0.00	
7,800.0	0.33	239.52	7,498.1	-1,562.3	-305.4	1,591.9	0.00	0.00	
7,900.0	0.33	239.52	7,598.1	-1,562.6	-305.9	1,592.2	0.00	0.00	
8,000.0	0.33	239.52	7,698.1	-1,562.9	-306.4	1,592.6	0.00	0.00	
8,100.0	0.33	239.52	7,798.1	-1,563.2	-306.9	1,593.0	0.00	0.00	
8,200.0	0.33	239.52	7,898.1	-1,563.5	-307.4	1,593.4	0.00	0.00	
8,300.0	0.33	239.52	7,998.1	-1,563.8	-307.9	1,593.8	0.00	0.00	
8,400.0	0.33	239.52	8,098.1	-1,564.1	-308.4	1,594.2	0.00	0.00	
8,450.9	0.33	239.52	8,149.0	-1,564.2	-308.6	1,594.4	0.00	0.00	Rollins - O04 696 MF02A-9 BHL (6.13.11)
8,500.0	0.33	239.52	8,198.1	-1,564.4	-308.9	1,594.5	0.00	0.00	
8,600.0	0.33	239.52	8,298.1	-1,564.7	-309.4	1,594.9	0.00	0.00	
8,600.9	0.33	239.52	8,299.0	-1,564.7	-309.4	1,594.9	0.00	0.00	Drillers TD @ 8299' TVD
8,700.0	0.33	239.52	8,398.1	-1,564.9	-309.9	1,595.3	0.00	0.00	
8,800.0	0.33	239.52	8,498.1	-1,565.2	-310.4	1,595.7	0.00	0.00	
8,900.0	0.33	239.52	8,598.1	-1,565.5	-310.9	1,596.1	0.00	0.00	
9,000.0	0.33	239.52	8,698.1	-1,565.8	-311.3	1,596.5	0.00	0.00	
9,100.0	0.33	239.52	8,798.1	-1,566.1	-311.8	1,596.9	0.00	0.00	
9,200.0	0.33	239.52	8,898.1	-1,566.4	-312.3	1,597.2	0.00	0.00	
9,300.0	0.33	239.52	8,998.1	-1,566.7	-312.8	1,597.6	0.00	0.00	
9,400.0	0.33	239.52	9,098.1	-1,567.0	-313.3	1,598.0	0.00	0.00	
9,500.0	0.33	239.52	9,198.1	-1,567.3	-313.8	1,598.4	0.00	0.00	
9,600.0	0.33	239.52	9,298.1	-1,567.6	-314.3	1,598.8	0.00	0.00	
9,700.0	0.33	239.52	9,398.1	-1,567.9	-314.8	1,599.2	0.00	0.00	
9,800.0	0.33	239.52	9,498.0	-1,568.2	-315.3	1,599.5	0.00	0.00	
9,900.0	0.33	239.52	9,598.0	-1,568.4	-315.8	1,599.9	0.00	0.00	
10,000.0	0.33	239.52	9,698.0	-1,568.7	-316.3	1,600.3	0.00	0.00	
10,100.0	0.33	239.52	9,798.0	-1,569.0	-316.8	1,600.7	0.00	0.00	
10,200.0	0.33	239.52	9,898.0	-1,569.3	-317.3	1,601.1	0.00	0.00	
10,300.0	0.33	239.52	9,998.0	-1,569.6	-317.8	1,601.5	0.00	0.00	
10,302.0	0.33	239.52	10,000.0	-1,569.6	-317.8	1,601.5	0.00	0.00	Permit TD @ 10000' TVD

Targets

Target Name - hit/miss target - Shape	Dip Angle (°)	Dip Dir. (°)	TVD (ft)	+N/-S (ft)	+E/-W (ft)	Northing (ft)	Easting (ft)	Latitude	Longitude
O04 696 MF02A-9 TGT - plan hits target center - Point	0.00	0.00	4,689.0	-1,554.2	-291.6	1,634,395.88	2,264,337.33	39° 32' 46.28 N	108° 6' 32.81 W
O04 696 MF02A-9 BHL - plan hits target center - Rectangle (sides W30.0 H50.0 D0.0)	0.00	0.00	8,149.0	-1,564.2	-308.6	1,634,386.35	2,264,320.02	39° 32' 46.18 N	108° 6' 33.03 W

Planning Report

Database:	USA EDM 5000 US Multi Users DB	Local Co-ordinate Reference:	Well NP MF02A-9 O04 696 (was 18C-4)
Company:	EnCana Oil & Gas (USA) Inc	TVD Reference:	KB MF18C-4 @ 6044.0ft (Original Well Elev)
Project:	North Piceance	MD Reference:	KB MF18C-4 @ 6044.0ft (Original Well Elev)
Site:	O04 696 (3rd)	North Reference:	True
Well:	NP MF02A-9 O04 696 (was 18C-4)	Survey Calculation Method:	Minimum Curvature
Wellbore:	DD		
Design:	Plan #2		

Formations						
Measured Depth (ft)	Vertical Depth (ft)	Name	Lithology	Dip (°)	Dip Direction (°)	
4,950.9	4,649.0	Williams Fork		0.00		
4,990.9	4,689.0	Top of Gas		0.00		
8,450.9	8,149.0	Rollins		0.00		

Plan Annotations					
Measured Depth (ft)	Vertical Depth (ft)	Local Coordinates			
		+N/-S (ft)	+E/-W (ft)	Comment	
200.0	200.0	0.0	0.0	KOP @ 200'	
969.8	949.1	-150.4	-28.2	EOB; Inc=23.09°	
4,221.1	3,939.9	-1,403.8	-263.4	Start Drop -3.00	
4,990.9	4,689.0	-1,554.2	-291.6	EOD; Inc=0°	
8,600.9	8,299.0	-1,554.2	-291.7	Drillers TD @ 8299' TVD	
10,302.0	10,000.0	-1,564.2	-308.6	Permit TD @ 10000' TVD	