

S 1/4 Cor. Sec. 36,
1912 Brass Cap, 1.5'
High, Conduit
Lat: 39.564417
Long: 108.117936

Sec. 36 T6S, R96W, 6th P.M.

S89°59'07"W - 2624.98' (Meas.)

SE Cor Sec. 36,
1982 Private Brass
Cap, 0.6' High, Sign
Lat: 39.564417
Long: 108.108631

C.C.
1912 Brass Cap,
1.5' High, Sign
Lat: 39.564417
Long: 108.120500

P.C. 1912 Brass Cap,
1.0' High, Conduit,
Pile of Stones, Sign
Lat: 39.564419
Long: 108.110489

R 96 W
C.C.
1912 Brass Cap,
0.2' High, Pile of
Stones
Lat: 39.563064
Long: 108.108631

R 95 W

N89°52'47"W - 3364.89' (Meas.)

T5S
T6S

1912 Brass Cap
2.0' High
Lat: 39.563044
Long: 108.096700

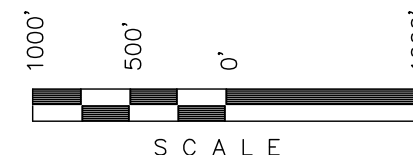
BASIS OF ELEVATION

SPOT ELEVATION AT THE NORTHWEST CORNER OF SECTION 30, T5S, R95W, 6th P.M. TAKEN FROM THE FORKED GULCH QUADRANGLE, COLORADO, GARFIELD COUNTY, 7.5 MINUTE SERIES (TOPOGRAPHICAL MAP) PUBLISHED BY THE UNITED STATES DEPARTMENT OF THE INTERIOR, GEOLOGICAL SURVEY. SAID ELEVATION IS MARKED AS BEING 5966 FEET.

BASIS OF BEARINGS

BASIS OF BEARINGS IS A G.P.S. OBSERVATION.

Sheet 1g of 11



CERTIFICATE

THIS IS TO CERTIFY THAT THE ABOVE PLAT WAS PREPARED AND LOCATION AS SHOWN WAS STAKED ON THE GROUND FROM FIELD NOTES OF ACTUAL SURVEYS MADE BY ME OR UNDER MY SUPERVISION AND THAT THE SAME ARE TRUE AND CORRECT TO THE BEST OF MY KNOWLEDGE AND BELIEF.

Revised: 06-27-11 D.R.B.
Revised: 08-14-09 D.R.B.
Revised: 03-19-09 D.R.B.
Revised: 02-27-09 D.R.B.
Revised: 02-04-09 D.R.B.
Revised: 09-17-08 D.R.B.
Revised: 05-14-08 D.R.B.

REGISTERED LAND SURVEYOR
REGISTRATION NO. 17492
STATE OF COLORADO
06-28-2011

UINTAH ENGINEERING & LAND SURVEYING
85 SOUTH 200 EAST - VERNAL, UTAH 84078
(435) 789-1017

1" = 1000'

DATE SURVEYED:
02-11-08

DATE DRAWN:
03-24-08

PARTY
S.V. B.D. D.R.B.

REFERENCES
G.L.O. PLAT

WEATHER
COLD

FILE
Encana OIL & GAS (USA) INC.

N00°01'46"W - 3622.72' (Meas.)

LINE TABLE		
LINE	BEARING	LENGTH
L1	N89°55'56"W	722.76'
L2	N89°59'23"W	524.22'
L3	N00°02'45"E	493.26'
L4	N89°56'20"W	319.44'

NAD 83 (SURFACE LOCATION)
LATITUDE = 39°33'01.86" (39.550517)
LONGITUDE = 108°06'28.87" (108.108019)
NAD 27 (SURFACE LOCATION)
LATITUDE = 39°33'01.94" (39.550539)
LONGITUDE = 108°06'26.59" (108.107386)

NOTE:
THE PROPOSED BOTTOM HOLE FOR THIS WELL
IS LOCATED IN LOT 1 OF SECTION 9, T6S,
R96W, 6th P.M. AT A DISTANCE OF 1243' FNL
951' FEL. IT BEARS S13°46'29"E 2709.00' FROM
THE PROPOSED WELL HEAD.

2000 Private Alum.
Cap, 3/4" Rebar, 1.0'
High, Pile of Stones
Lat: 39.554475
Long: 108.120492

N. PARACHUTE
MF01D-9 004 696
Elev. Ungraded Ground = 6023.5'
Elev. Graded Ground = 6010.9'

N05°02'23"E - 2836.37' (Meas.)

1912 Brass Cap 0.4'
High, E-W Fenceline,
Pile of Stones
Lat: 39.546719
Long: 108.121375

W.C. 1912 Brass
Cap 1.5' High
Lat: 39.546711
Long: 108.110881

90°00'
(G.L.O.)

1912 Brass Cap
1.5' High
Lat: 39.546703
Long: 108.102369

PDOP = 2.1

NOTE:
SEE SHEET 7A FOR EXISTING
IMPROVEMENT WITHIN 400' OF THE
PROPOSED WELL HEAD.

NOTE:
THE PROPOSED WELL HEAD BEARS N48°55'27"W
2114.17' FROM THE SOUTHEAST CORNER OF
SECTION 4, T6S, R96W, 6th P.M.

5964.42' (G.L.O.)

Encana OIL & GAS (USA) INC.

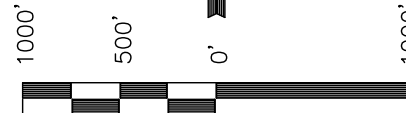
Well location, N. PARACHUTE MF01D-9 004 696 (TARGET BOTTOM HOLE), located as shown in Lot 1 of Section 9, T6S, R96W, 6th P.M., Garfield County, Colorado.

BASIS OF ELEVATION

SPOT ELEVATION AT THE NORTHWEST CORNER OF SECTION 30, T5S, R95W, 6th P.M. TAKEN FROM THE FORKED GULCH QUADRANGLE, COLORADO, GARFIELD COUNTY, 7.5 MINUTE SERIES (TOPOGRAPHICAL MAP) PUBLISHED BY THE UNITED STATES DEPARTMENT OF THE INTERIOR, GEOLOGICAL SURVEY. SAID ELEVATION IS MARKED AS BEING 5966 FEET.

C.C. 1912 Brass Cap, 1.5' High
Lat: 39.544732
Long: 108.102372

Sheet 1h of 11



SCALE
CERTIFICATE

THIS IS TO CERTIFY THAT THE ABOVE PLAT WAS PREPARED AND LOCATION AS SHOWN WAS STAKED ON THE GROUND FROM FIELD NOTES OF ACTUAL SURVEYS MADE BY ME OR UNDER MY SUPERVISION AND THAT THE SAME ARE TRUE AND CORRECT TO THE BEST OF MY KNOWLEDGE AND BELIEF.

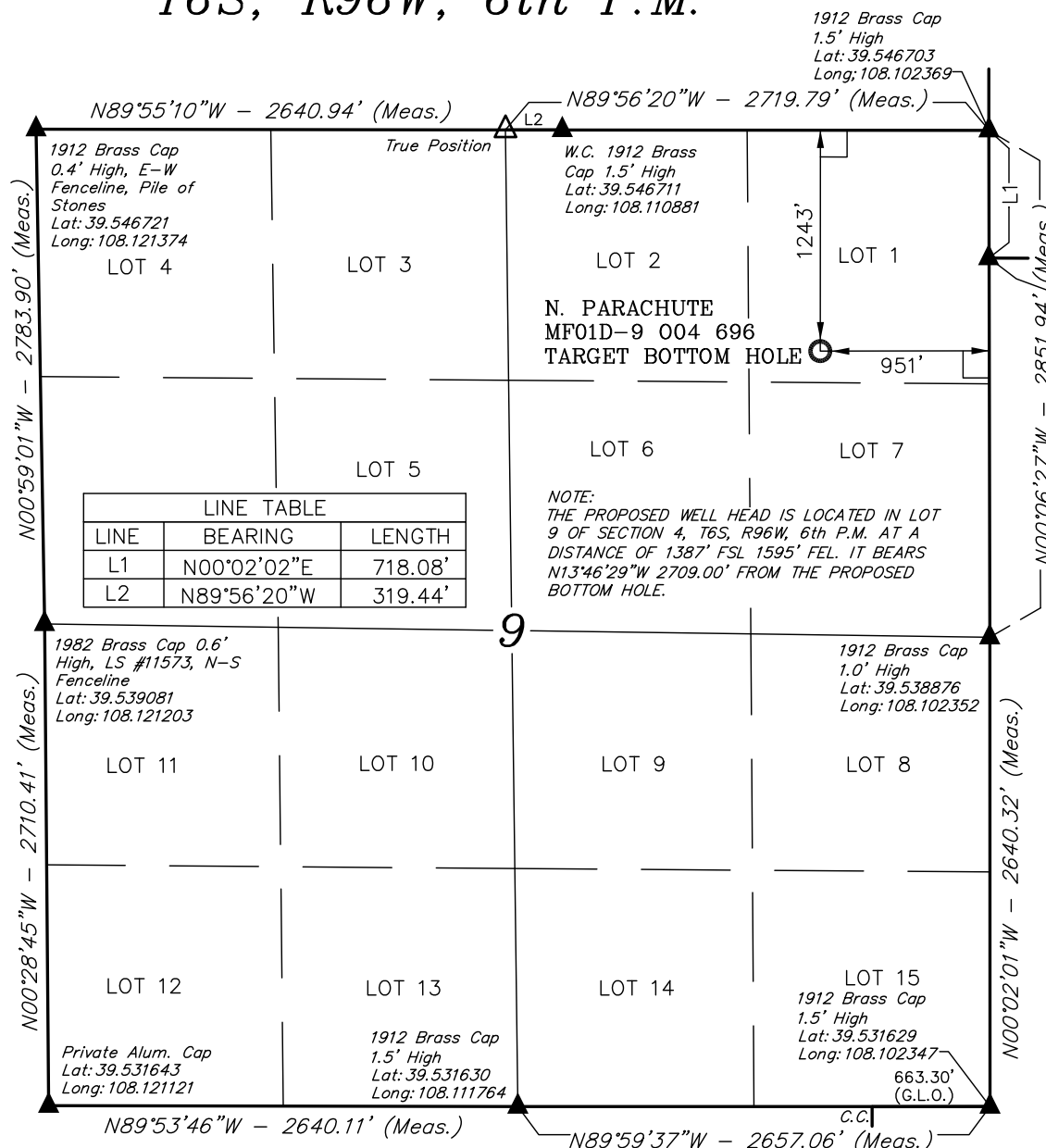
Revised: 06-27-11 D.R.B.
Revised: 03-19-09 D.R.B.
Revised: 02-04-09 D.R.B.
Revised: 10-07-08 D.R.B.
Revised: 09-17-08 D.R.B.

REGISTERED LAND SURVEYOR
REGISTRATION NO. 17492
STATE OF COLORADO
06-28-2011

UINTAH ENGINEERING & LAND SURVEYING
85 SOUTH 200 EAST - VERNAL, UTAH 84078
(435) 789-1017

1" = 1000'	DATE SURVEYED: 02-11-08	DATE DRAWN: 03-24-08
PARTY S.V. B.D. D.R.B.	REFERENCES G.L.O. PLAT	
WEATHER COLD	FILE Encana OIL & GAS (USA) INC.	

T6S, R96W, 6th P.M.



LEGEND:

- 90° SYMBOL
- PROPOSED WELL HEAD.
- SECTION CORNERS LOCATED.

BASIS OF BEARINGS

BASIS OF BEARINGS IS A G.P.S. OBSERVATION.

NAD 83 (TARGET BOTTOM HOLE)	
LATITUDE = 39°32'35.86" (39.543294)	
LONGITUDE = 108°06'20.64" (108.105733)	
NAD 27 (TARGET BOTTOM HOLE)	
LATITUDE = 39°32'35.94" (39.543317)	
LONGITUDE = 108°06'18.36" (108.105100)	