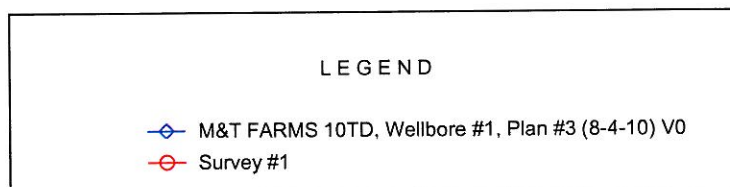
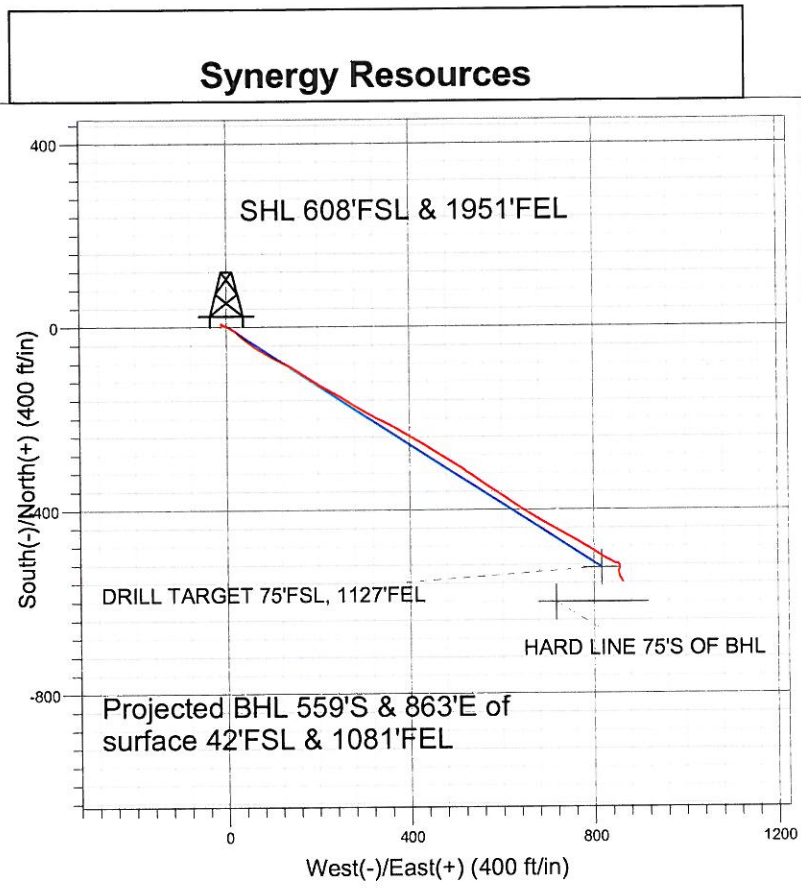
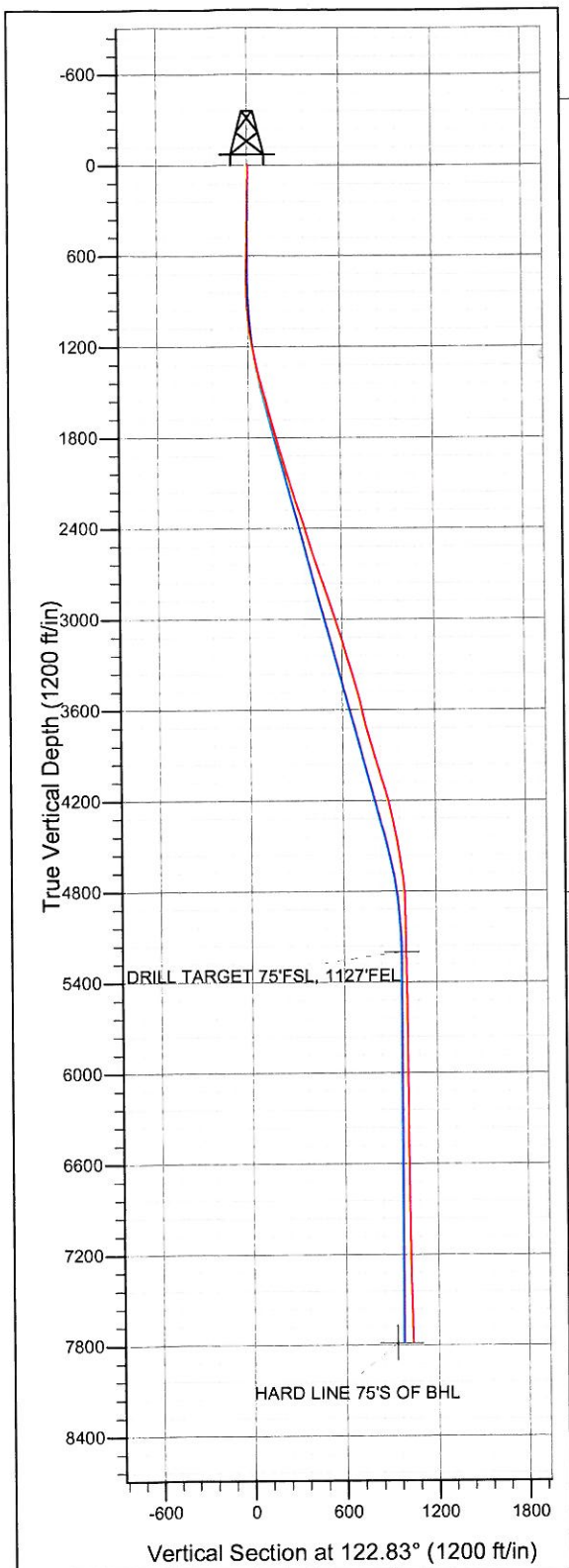


Well Name: <b>M&amp;T FARMS 10TD</b>					
Surface Location: M&T PAD Sec.10-T6N-R65W					
North American Datum 1983    US State Plane 1983    Colorado Northern Zone					
Ground Elevation: 4746.0					
+N/-S	+E/-W	Northing	Easting	Latitude	Longitude
0.0	0.0	1424401.99	3237214.35	40° 29' 42.911 N	104° 38' 49.427 W
Original Well Elev    10TD @ 4759.0ft (Original Well Elev)					
Slot					



## Final Survey Plot

Projected Final Survey -  
7920'MD & 7784'TVD @ 1028' VS  
1.7 deg Inc 148.7 deg AZ

Project: SEC.10-T6N-R65W  
Site: M&T PAD Sec.10-T6N-R65W  
Well: M&T FARMS 10TD  
Plan: Wellbore #1



## **Directional**

### **Synergy Resources**

**SEC.10-T6N-R65W**

**M&T PAD Sec.10-T6N-R65W**

**M&T FARMS 10TD**

**Wellbore #1**

**Survey: Survey #1**

### **Standard Survey Report**

**18 August, 2010**

# **ENSIGN** Directional

## Ensign Directional Survey Report

<b>Company:</b>	Synergy Resources	<b>Local Co-ordinate Reference:</b>	Well M&T FARMS 10TD
<b>Project:</b>	SEC.10-T6N-R65W	<b>TVD Reference:</b>	10TD @ 4759.0ft (Original Well Elev)
<b>Site:</b>	M&T PAD Sec.10-T6N-R65W	<b>MD Reference:</b>	10TD @ 4759.0ft (Original Well Elev)
<b>Well:</b>	M&T FARMS 10TD	<b>North Reference:</b>	True
<b>Wellbore:</b>	Wellbore #1	<b>Survey Calculation Method:</b>	Minimum Curvature
<b>Design:</b>	Wellbore #1	<b>Database:</b>	Landmark

<b>Project</b>	SEC.10-T6N-R65W, Weld County, Colorado		
<b>Map System:</b>	US State Plane 1983	<b>System Datum:</b>	Mean Sea Level
<b>Geo Datum:</b>	North American Datum 1983		
<b>Map Zone:</b>	Colorado Northern Zone		Using geodetic scale factor

<b>Site</b>	M&T PAD Sec.10-T6N-R65W		
<b>Site Position:</b>		<b>Northing:</b>	1,426,500.00ft
<b>From:</b>	Lat/Long	<b>Easting:</b>	3,236,500.00ft
<b>Position Uncertainty:</b>	0.0 ft	<b>Slot Radius:</b>	"
		<b>Latitude:</b>	40° 30' 3.710 N
		<b>Longitude:</b>	104° 38' 58.413 W
		<b>Grid Convergence:</b>	0.55 °

<b>Well</b>	M&T FARMS 10TD, SHL LAT: 40.495253, LONG: -104.647063		
<b>Well Position</b>	<b>+N/-S</b>	0.0 ft	<b>Northing:</b> 1,424,401.99 ft
	<b>+E/-W</b>	0.0 ft	<b>Easting:</b> 3,237,214.35 ft
<b>Position Uncertainty</b>	0.0 ft	<b>Wellhead Elevation:</b>	4,759.0 ft
		<b>Latitude:</b>	40° 29' 42.911 N
		<b>Longitude:</b>	104° 38' 49.427 W
		<b>Ground Level:</b>	4,746.0 ft

<b>Wellbore</b>	Wellbore #1				
<b>Magnetics</b>	<b>Model Name</b>	<b>Sample Date</b>	<b>Declination (°)</b>	<b>Dip Angle (°)</b>	<b>Field Strength (nT)</b>
	IGRF2010	7/13/2010	8.93	67.18	53,292

<b>Design</b>	Wellbore #1			
<b>Audit Notes:</b>				
<b>Version:</b>	1.0	<b>Phase:</b>	ACTUAL	<b>Tie On Depth:</b>
<b>Vertical Section:</b>	<b>Depth From (TVD) (ft)</b>	<b>+N/-S (ft)</b>	<b>+E/-W (ft)</b>	<b>Direction (°)</b>
	0.0	0.0	0.0	0.00

Date		Survey (Wellbore)	Tool Name	Description
From ( )	To ( )			
		( )		

Survey										
Measured Depth (ft)	Inclination (°)	Azimuth (°)	Vertical Depth (ft)	+N/-S (ft)	+E/-W (ft)	Vertical Section (ft)	Dogleg Rate (°/100ft)	Build Rate (°/100ft)	Turn Rate (°/100ft)	
0.0	0.00	0.00	0.0	0.0	0.0	0.0	0.00	0.00	0.00	
120.0	1.90	279.10	120.0	0.3	-2.0	0.3	1.58	1.58	0.00	
211.0	1.00	274.90	210.9	0.6	-4.2	0.6	1.00	-0.99	-4.62	
303.0	0.70	280.80	302.9	0.8	-5.6	0.8	0.34	-0.33	6.41	
395.0	0.70	299.30	394.9	1.2	-6.6	1.2	0.24	0.00	20.11	
486.0	0.90	291.60	485.9	1.7	-7.8	1.7	0.25	0.22	-8.46	
522.0	1.10	283.90	521.9	1.9	-8.4	1.9	0.67	0.56	-21.39	
614.0	1.60	289.60	613.9	2.5	-10.5	2.5	0.56	0.54	6.20	
707.0	1.90	324.10	706.8	4.2	-12.6	4.2	1.16	0.32	37.10	
801.0	0.70	71.90	800.8	5.7	-12.9	5.7	2.36	-1.28	114.68	
895.0	3.30	123.70	894.8	4.3	-10.2	4.3	3.11	2.77	55.11	
989.0	5.20	114.70	988.5	1.1	-4.0	1.1	2.14	2.02	-9.57	
1,083.0	7.50	118.10	1,081.9	-3.6	5.3	-3.6	2.48	2.45	3.62	



**Company:** Synergy Resources  
**Project:** SEC.10-T6N-R65W  
**Site:** M&T PAD Sec.10-T6N-R65W  
**Well:** M&T FARMS 10TD  
**Wellbore:** Wellbore #1  
**Design:** Wellbore #1

**Local Co-ordinate Reference:** Well M&T FARMS 10TD  
**TVD Reference:** 10TD @ 4759.0ft (Original Well Elev)  
**MD Reference:** 10TD @ 4759.0ft (Original Well Elev)  
**North Reference:** True  
**Survey Calculation Method:** Minimum Curvature  
**Database:** Landmark

### Survey

Measured Depth (ft)	Inclination (°)	Azimuth (°)	Vertical Depth (ft)	+N/-S (ft)	+E/-W (ft)	Vertical Section (ft)	Dogleg Rate (°/100ft)	Build Rate (°/100ft)	Turn Rate (°/100ft)
1,176.0	9.60	127.80	1,173.9	-11.2	16.7	-11.2	2.73	2.26	10.43
1,270.0	11.40	130.90	1,266.3	-22.1	30.0	-22.1	2.01	1.91	3.30
1,363.0	13.10	127.10	1,357.2	-34.5	45.3	-34.5	2.02	1.83	-4.09
1,456.0	14.80	122.80	1,447.5	-47.3	63.7	-47.3	2.14	1.83	-4.62
1,550.0	15.40	121.30	1,538.2	-60.3	84.5	-60.3	0.76	0.64	-1.60
1,644.0	15.70	115.80	1,628.8	-72.3	106.6	-72.3	1.60	0.32	-5.85
1,737.0	15.90	115.80	1,718.3	-83.3	129.4	-83.3	0.22	0.22	0.00
1,831.0	15.40	122.00	1,808.8	-95.5	151.5	-95.5	1.86	-0.53	6.60
1,924.0	16.70	122.90	1,898.2	-109.3	173.2	-109.3	1.42	1.40	0.97
2,019.0	16.50	122.80	1,989.2	-124.1	196.0	-124.1	0.21	-0.21	-0.11
2,113.0	15.90	118.40	2,079.5	-137.4	218.6	-137.4	1.45	-0.64	-4.68
2,207.0	15.90	118.30	2,169.9	-149.6	241.3	-149.6	0.03	0.00	-0.11
2,301.0	18.20	123.90	2,259.7	-163.9	264.8	-163.9	3.00	2.45	5.96
2,394.0	17.60	121.20	2,348.2	-179.3	288.9	-179.3	1.10	-0.65	-2.90
2,488.0	17.30	117.10	2,437.9	-193.0	313.5	-193.0	1.35	-0.32	-4.36
2,582.0	17.70	117.10	2,527.6	-205.9	338.6	-205.9	0.43	0.43	0.00
2,675.0	18.30	119.20	2,616.0	-219.5	364.0	-219.5	0.95	0.65	2.26
2,769.0	18.20	120.30	2,705.3	-234.1	389.5	-234.1	0.38	-0.11	1.17
2,863.0	18.50	119.50	2,794.5	-248.8	415.2	-248.8	0.42	0.32	-0.85
2,956.0	19.20	122.70	2,882.5	-264.4	440.9	-264.4	1.34	0.75	3.44
3,050.0	17.90	122.00	2,971.6	-280.4	466.1	-280.4	1.40	-1.38	-0.74
3,144.0	16.70	120.70	3,061.4	-294.9	490.0	-294.9	1.34	-1.28	-1.38
3,237.0	17.20	124.30	3,150.3	-309.5	512.8	-309.5	1.25	0.54	3.87
3,331.0	16.20	126.60	3,240.4	-325.1	534.9	-325.1	1.27	-1.06	2.45
3,425.0	15.80	124.90	3,330.7	-340.3	555.9	-340.3	0.66	-0.43	-1.81
3,519.0	15.10	123.10	3,421.3	-354.3	576.6	-354.3	0.90	-0.74	-1.91
3,613.0	14.80	123.00	3,512.2	-367.5	597.0	-367.5	0.32	-0.32	-0.11
3,707.0	13.30	126.10	3,603.3	-380.4	615.8	-380.4	1.78	-1.60	3.30
3,800.0	13.20	124.20	3,693.9	-392.7	633.2	-392.7	0.48	-0.11	-2.04
3,894.0	15.50	121.30	3,784.9	-405.3	652.8	-405.3	2.56	2.45	-3.09
3,987.0	16.20	120.50	3,874.4	-418.3	674.6	-418.3	0.79	0.75	-0.86
4,081.0	16.60	120.00	3,964.6	-431.7	697.5	-431.7	0.45	0.43	-0.53
4,175.0	17.00	117.90	4,054.6	-444.8	721.3	-444.8	0.77	0.43	-2.23
4,268.0	15.80	120.80	4,143.8	-457.7	744.2	-457.7	1.56	-1.29	3.12
4,362.0	13.50	120.50	4,234.7	-469.8	764.6	-469.8	2.45	-2.45	-0.32
4,456.0	12.20	121.30	4,326.4	-480.5	782.6	-480.5	1.40	-1.38	0.85
4,549.0	10.30	121.30	4,417.6	-489.9	798.1	-489.9	2.04	-2.04	0.00
4,643.0	8.70	122.30	4,510.3	-498.1	811.3	-498.1	1.71	-1.70	1.06
4,738.0	8.30	122.00	4,604.2	-505.6	823.2	-505.6	0.42	-0.42	-0.32
4,831.0	7.20	120.60	4,696.4	-512.1	833.9	-512.1	1.20	-1.18	-1.51
4,925.0	5.50	110.20	4,789.8	-516.7	843.2	-516.7	2.18	-1.81	-11.06
5,019.0	1.50	77.00	4,883.6	-517.9	848.6	-517.9	4.60	-4.26	-35.32
5,113.0	1.10	96.90	4,977.6	-517.8	850.7	-517.8	0.64	-0.43	21.17
5,207.0	0.60	137.60	5,071.6	-518.2	851.9	-518.2	0.80	-0.53	43.30
5,300.0	0.90	150.20	5,164.6	-519.2	852.6	-519.2	0.37	0.32	13.55
5,335.2	0.94	147.84	5,199.8	-519.7	852.9	-519.7	0.15	0.10	-6.69
<b>DRILL TARGET 75°FSL, 1127°FEL</b>									
5,394.0	1.00	144.30	5,258.6	-520.5	853.5	-520.5	0.15	0.11	-6.03
5,488.0	0.80	141.10	5,352.5	-521.7	854.4	-521.7	0.22	-0.21	-3.40
5,582.0	0.80	162.40	5,446.5	-522.9	855.0	-522.9	0.31	0.00	22.66
5,676.0	1.40	169.70	5,540.5	-524.6	855.4	-524.6	0.65	0.64	7.77
5,770.0	1.50	163.10	5,634.5	-526.9	855.9	-526.9	0.21	0.11	-7.02
5,863.0	1.00	201.40	5,727.5	-528.8	856.0	-528.8	1.02	-0.54	41.18
5,957.0	1.00	209.50	5,821.5	-530.3	855.3	-530.3	0.15	0.00	8.62

**Company:** Synergy Resources  
**Project:** SEC.10-T6N-R65W  
**Site:** M&T PAD Sec.10-T6N-R65W  
**Well:** M&T FARMS 10TD  
**Wellbore:** Wellbore #1  
**Design:** Wellbore #1

**Local Co-ordinate Reference:** Well M&T FARMS 10TD  
**TVD Reference:** 10TD @ 4759.0ft (Original Well Elev)  
**MD Reference:** 10TD @ 4759.0ft (Original Well Elev)  
**North Reference:** True  
**Survey Calculation Method:** Minimum Curvature  
**Database:** Landmark

**Survey**

Measured Depth (ft)	Inclination (°)	Azimuth (°)	Vertical Depth (ft)	+N/-S (ft)	+E/-W (ft)	Vertical Section (ft)	Dogleg Rate (°/100ft)	Build Rate (°/100ft)	Turn Rate (°/100ft)
6,051.0	0.70	210.60	5,915.4	-531.5	854.6	-531.5	0.32	-0.32	1.17
6,145.0	0.70	208.90	6,009.4	-532.5	854.0	-532.5	0.02	0.00	-1.81
6,239.0	0.70	191.30	6,103.4	-533.6	853.6	-533.6	0.23	0.00	-18.72
6,395.0	0.60	183.70	6,259.4	-535.3	853.4	-535.3	0.08	-0.06	-4.87
6,551.0	0.50	166.10	6,415.4	-536.8	853.5	-536.8	0.13	-0.06	-11.28
6,707.0	0.70	177.50	6,571.4	-538.4	853.7	-538.4	0.15	0.13	7.31
6,863.0	0.80	169.50	6,727.4	-540.4	853.9	-540.4	0.09	0.06	-5.13
7,020.0	0.80	179.90	6,884.4	-542.6	854.1	-542.6	0.09	0.00	6.62
7,176.0	0.90	163.70	7,040.4	-544.9	854.5	-544.9	0.17	0.06	-10.38
7,332.0	0.90	158.40	7,196.3	-547.2	855.3	-547.2	0.05	0.00	-3.40
7,488.0	1.20	142.80	7,352.3	-549.6	856.7	-549.6	0.26	0.19	-10.00
7,643.0	1.40	150.20	7,507.3	-552.6	858.6	-552.6	0.17	0.13	4.77
7,876.0	1.70	148.70	7,740.2	-558.0	861.9	-558.0	0.13	0.13	-0.64
7,919.7	1.70	148.70	7,783.8	-559.1	862.5	-559.1	0.00	0.00	0.00
<b>HARD LINE 75'S OF BHL</b>									
7,920.0	1.70	148.70	7,784.2	-559.1	862.5	-559.1	0.00	0.00	0.00

Checked By: \_\_\_\_\_ Approved By: \_\_\_\_\_ Date: \_\_\_\_\_