

SYNERGY RESOURCES CORPORATION
20203 HIGHWAY 60
PLATTEVILLE, Colorado

SRC M&T Farms
SRC M&T Farms 10XD

Ensign 33

Post Job Summary

Cement Production Casing

Prepared for: Don Libhart
Date Prepared: 8/16/2010
Version: 1

Service Supervisor: SALINAS, JOSE

Submitted by: Mark Sauter

HALLIBURTON

The Road to Excellence Starts with Safety

Sold To #: 359915		Ship To #: 2800429		Quote #:		Sales Order #: 7560681	
Customer: SYNERGY RESOURCES CORPORATION				Customer Rep:			
Well Name: SRC M&T Farms			Well #: 10XD			API/UWI #:	
Field: WATTENBERG		City (SAP): EATON		County/Parish: Weld		State: Colorado	
Contractor: Ensign			Rig/Platform Name/Num: 33				
Job Purpose: Cement Production Casing							
Well Type: Development Well			Job Type: Cement Production Casing				
Sales Person: FLING, MATTHEW			Srvc Supervisor: SALINAS, JOSE			MBU ID Emp #: 100319	

Job Personnel

HES Emp Name	Exp Hrs	Emp #	HES Emp Name	Exp Hrs	Emp #	HES Emp Name	Exp Hrs	Emp #
AARON, WESLEY J		403606	CHAVEZ, JEROME Christophe		458298	OZBUN, RYAN Jacob		475709
SALINAS, JOSE R		100319	THOMPSON, STEVEN Darrin		445340			

Equipment

HES Unit #	Distance-1 way	HES Unit #	Distance-1 way	HES Unit #	Distance-1 way	HES Unit #	Distance-1 way
10804557C	40 mile	10948695	40 mile	10977079C	40 mile	11036298	40 mile
11410470C	40 mile						

Job Hours

Date	On Location Hours	Operating Hours	Date	On Location Hours	Operating Hours	Date	On Location Hours	Operating Hours

TOTAL Total is the sum of each column separately

Job

Formation Name	Formation Depth (MD)	Top	Bottom	Form Type	Job depth MD	Job Depth TVD	Water Depth	Perforation Depth (MD)	From	To
				BHST	7748. m	7748. m				
						5. m				

Job Times

Called Out	Date	Time	Time Zone
11 - Aug - 2010	23:00	MST	
On Location	12 - Aug - 2010	02:30	MST
Job Started	12 - Aug - 2010	04:46	MST
Job Completed	12 - Aug - 2010	06:08	MST
Departed Loc	12 - Aug - 2010	07:15	MST

Well Data

Description	New / Used	Max pressure MPa	Size mm	ID mm	Weight kg/m	Thread	Grade	Top MD m	Bottom MD m	Top TVD m	Bottom TVD m
Open Hole				7.875				559.	7748.	.	.
Production Casing	New		4.5	4.	11.6			.	7711.		
Surface Casing	New		8.625	8.097	24.		J-55	.	559.	.	.

Sales/Rental/3rd Party (HES)

Description	Qty	Qty uom	Depth	Supplier
SHOE,FLT,4-1/2 8RD,2-3/4 SSII	1	EA		
CLR,FLT,4-1/2 8RD,9.5-13.5PPF,2-3/4	1	EA		
CENTRALIZER ASSY - API - 4-1/2 CSG X	30	EA		
CLAMP - LIMIT - 4-1/2 - HINGED -	1	EA		
KIT,HALL WELD-A	1	EA		
PLUG ASSY - 3W LATCHDOWN - 4-1/2 IN	1	EA		
BAFFLE ASSY - 4-1/2 8RD LATCHDOWN PLUG	1	EA		

Tools and Accessories

Type	Size	Qty	Make	Depth	Type	Size	Qty	Make	Depth	Type	Size	Qty	Make
Guide Shoe					Packer					Top Plug			
Float Shoe					Bridge Plug					Bottom Plug			
Float Collar					Retainer					SSR plug set			
Insert Float										Plug Container			
Stage Tool										Centralizers			

Miscellaneous Materials													
Gelling Agt		Conc		Surfactant		Conc		Acid Type		Qty		Conc	%
Treatment Fld		Conc		Inhibitor		Conc		Sand Type		Size		Qty	
Fluid Data													
Stage/Plug #: 1													
Fluid #	Stage Type	Fluid Name			Qty	Qty uom	Mixing Density kg/m3	Yield m3/sk	Mix Fluid m3/tonne	Rate m3/min	Total Mix Fluid m3/tonne		
1	Water Spacer				20.00	bbl	8.33	.0	.0	5.0			
2	MUD FLUSH III	MUD FLUSH III - SBM (528788)			24.00	bbl	8.4	.0	.0	5.0			
3	Cement 12.5#	ECONOCEM (TM) SYSTEM (452992)			400.0	sacks	12.5	1.96	10.7	5.0	10.7		
		10.696 Gal FRESH WATER											
4	Cement 13.5#	FRACCEM (TM) SYSTEM (452963)			250.0	sacks	13.5	1.7	8.16	5.0	8.16		
		8.162 Gal FRESH WATER											
5	CLAYFIX III DISPLACEMENT				119.00	bbl	8.33	.0	.0	5.0			
Calculated Values		Pressures			Volumes								
Displacement		Shut In: Instant			Lost Returns		Cement Slurry		Pad				
Top Of Cement		5 Min			Cement Returns		Actual Displacement		Treatment				
Frac Gradient		15 Min			Spacers		Load and Breakdown		Total Job				
Rates													
Circulating		Mixing		Displacement		Avg. Job							
Cement Left In Pipe		Amount	17 ft	Reason	Shoe Joint								
Frac Ring # 1 @	ID	Frac ring # 2 @	ID	Frac Ring # 3 @	ID	Frac Ring # 4 @	ID						
The Information Stated Herein Is Correct					Customer Representative Signature								

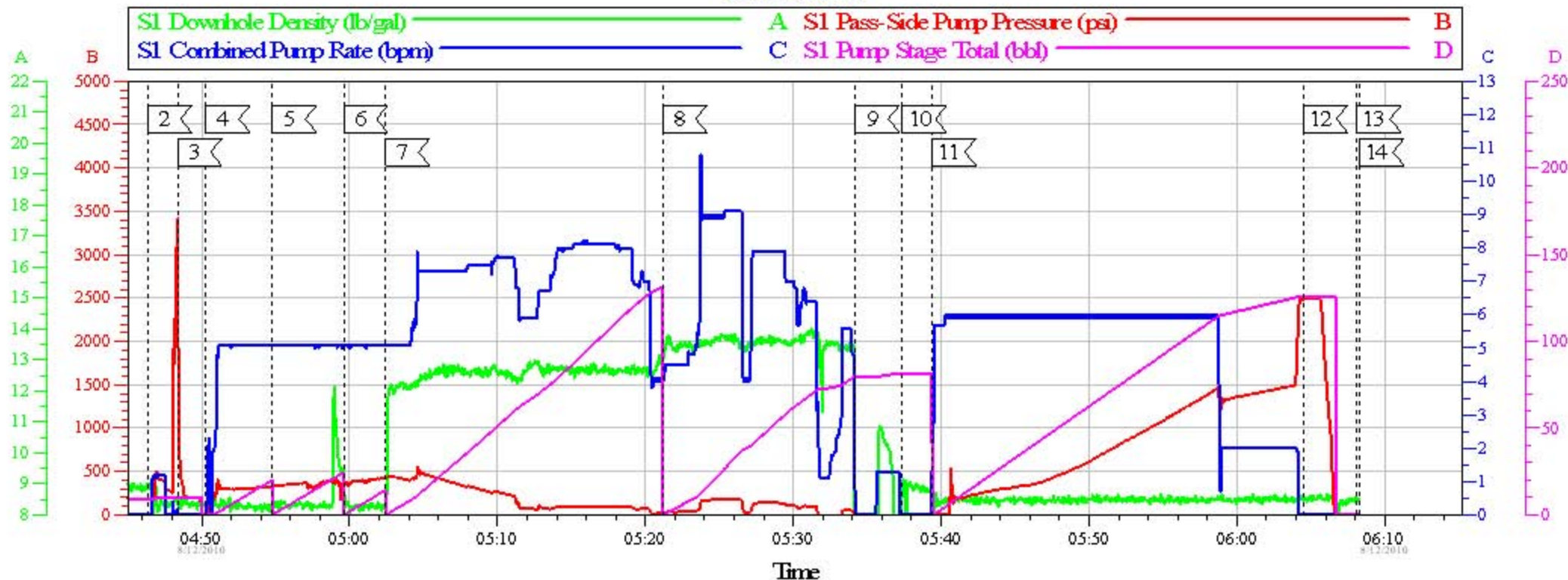
The Road to Excellence Starts with Safety

Sold To #: 359915	Ship To #: 2800429	Quote #:	Sales Order #: 7560681
Customer: SYNERGY RESOURCES CORPORATION		Customer Rep:	
Well Name: SRC M&T Farms	Well #: 10XD	API/UWI #:	
Field: WATTENBERG	City (SAP): EATON	County/Parish: Weld	State: Colorado
Legal Description:			
Lat:		Long:	
Contractor: Ensign		Rig/Platform Name/Num: 33	
Job Purpose: Cement Production Casing			Ticket Amount:
Well Type: Development Well		Job Type: Cement Production Casing	
Sales Person: FLING, MATTHEW		Srvs Supervisor: SALINAS, JOSE	MBU ID Emp #: 100319

Activity Description	Date/Time	Cht #	Rate m3/min	Volume m3		Pressure MPa		Comments
				Stage	Total	Tubing	Casing	
Call Out	08/11/2010 11:10							
Pre-Convoy Safety Meeting	08/12/2010 00:45							
Arrive at Location from Service Center	08/12/2010 02:00							
Pre-Rig Up Safety Meeting	08/12/2010 02:57							
Rig-Up Equipment	08/12/2010 02:57							
Pre-Job Safety Meeting	08/12/2010 04:30							
Test Lines	08/12/2010 04:48		0.32	0.32		.1	24.2	WATER
Pump Spacer	08/12/2010 04:50		0.79	3.18		.3	.2	Fresh Water Spacwe
Pump Spacer	08/12/2010 04:54		0.79	3.82		.4	2.4	Mud Flush III
Pump Spacer	08/12/2010 04:59		0.79	1.59		.5	2.5	Fresh Water Spacer
Pump Lead Cement	08/12/2010 05:02		0.79	21.94		1.4	3.1	400 sks (138 bbls) 12.5 ppg EconoCem B1
Pump Tail Cement	08/12/2010 05:21		0.79	12.08		2.0	.2	250 sks (76 bbls) 13.5 ppg FracCem B1
Clean Lines	08/12/2010 05:34		0.79	1.59		2.0		WATER
Drop Plug	08/12/2010 05:37		0	0				LATCH DOWN PLUG
Pump Displacement	08/12/2010 05:39		0.79	18.92		2.9	.2	CLAY FIX WATER
Other	08/12/2010 05:57		0.32	18.29		2.8		SLOW RATE DOWN TO LAND PLUG
Bump Plug	08/12/2010 06:04		0.32	18.92		2.9	17.3	

Activity Description	Date/Time	Cht #	Rate m3/ min	Volume m3		Pressure MPa		Comments
				Stage	Total	Tubing	Casing	
Release Casing Pressure	08/12/2010 06:06		0	0				
Pre-Rig Down Safety Meeting	08/12/2010 06:10							
Rig-Down Equipment	08/12/2010 06:15							
Depart Location Safety Meeting	08/12/2010 07:15							
Depart Location for Service Center or Other Site	08/12/2010 07:15							

Synergy
SRC M&T Farms 10XD Production
SO# 7560681



Global Event Log

2 <	Start Job	04:46:20	3 <	Test Lines	04:48:22	4 <	Fresh Water Spacer	04:50:17
5 <	Mud Flush III	04:54:47	6 <	Fresh Water Spacer	04:59:36	7 <	12.5 ppg EconoCem B1	05:02:26
8 <	13.5 ppg FracCem B1	05:21:11	9 <	Clean Lines	05:34:11	10 <	Drop Plug	05:37:23
11 <	ClayFix III Displacement	05:39:22	12 <	Bump Plug	06:04:30	13 <	End Job	06:08:08
14 <	Ending Job	06:08:20						

Customer:
 Well Description:
 Company Rep:

Job Date: 12-Aug-2010
 Job Type:
 Cement Supervisor:

Sales Order #: 7560681
 ADC Used:
 Elite #:

OptiCem v6.4.9
 12-Aug-10 06:09