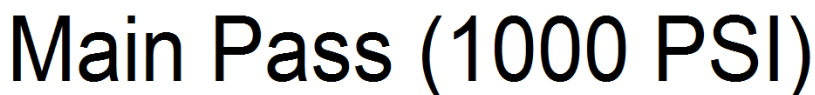
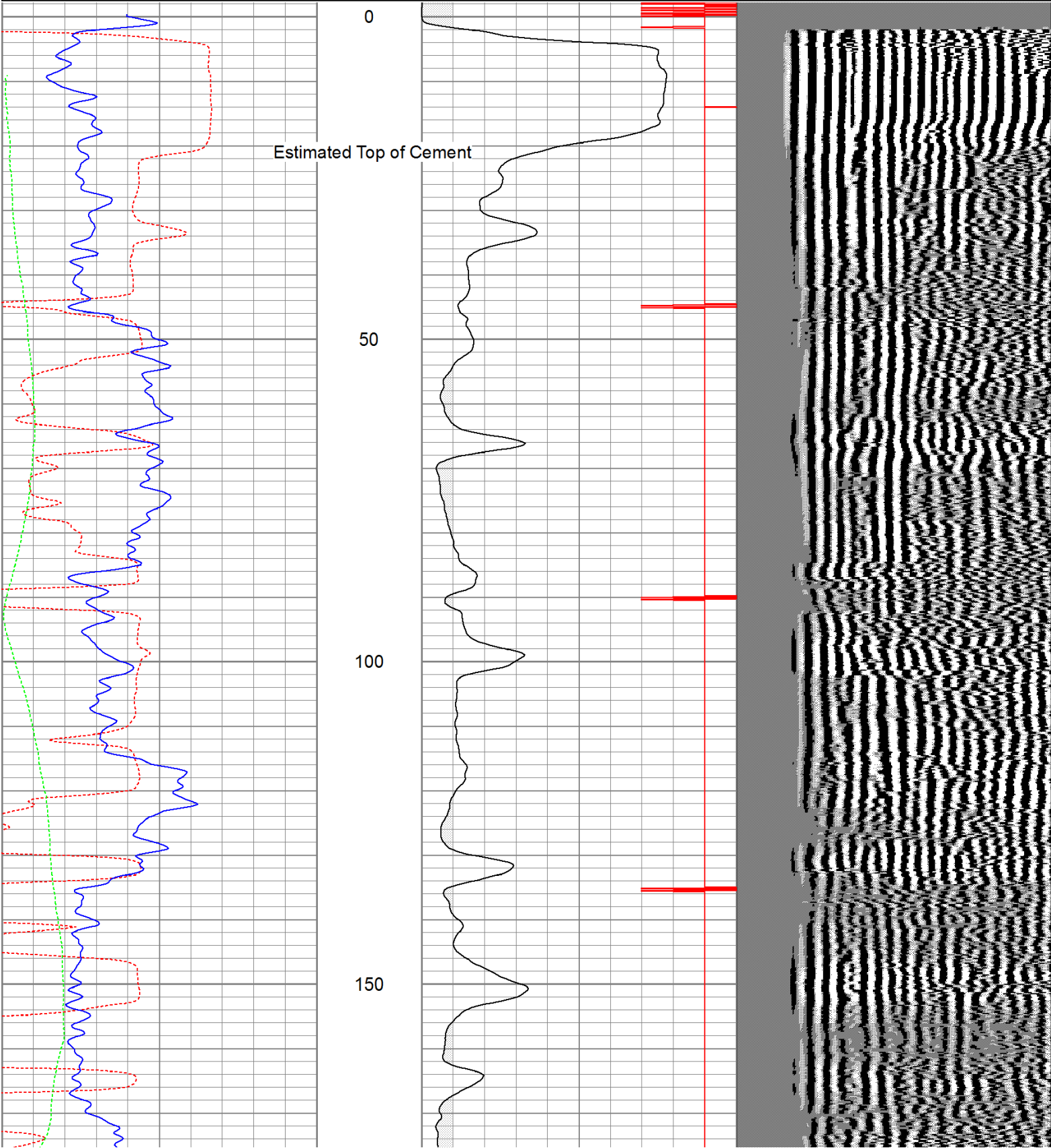


<<< Fold Here >>>
All interpretations are opinions based on inferences from electrical or other measurements and we cannot and do not guarantee the accuracy or correctness of any interpretation, and we shall not, except in the case of gross or willful negligence on our part, be liable or responsible for any loss, costs, damages, or expenses incurred or sustained by anyone resulting from any interpretation made by any of our officers, agents or employees. These interpretations are also subject to our general terms and conditions set out in our current Price Schedule.
Comments
Main Pass ran under 1000 PSI.

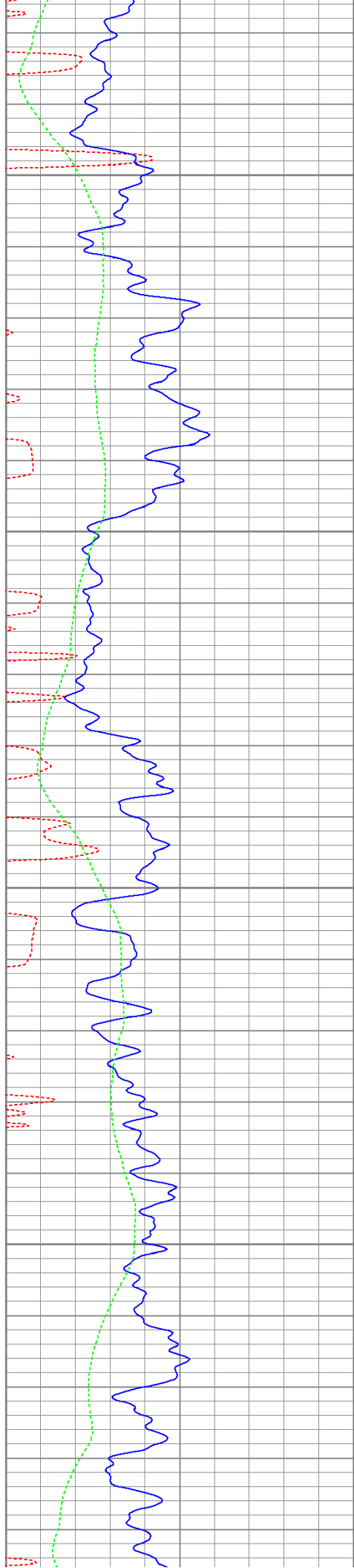


Database File: ac30-0781011b.db  
Dataset Pathname: pass2.2  
Presentation Format: cbldig  
Dataset Creation: Wed Aug 10 10:09:00 2011 by Calc Open-Cased 110302  
Charted by: Depth in Feet scaled 1:240

400	Travel Time (usec)	200	0	Amplitude (mV)	100	200	Variable Density	1200
0	GR (GAPI)	200	9	Collar Locator	-1			
0	DEVI (°)	10						





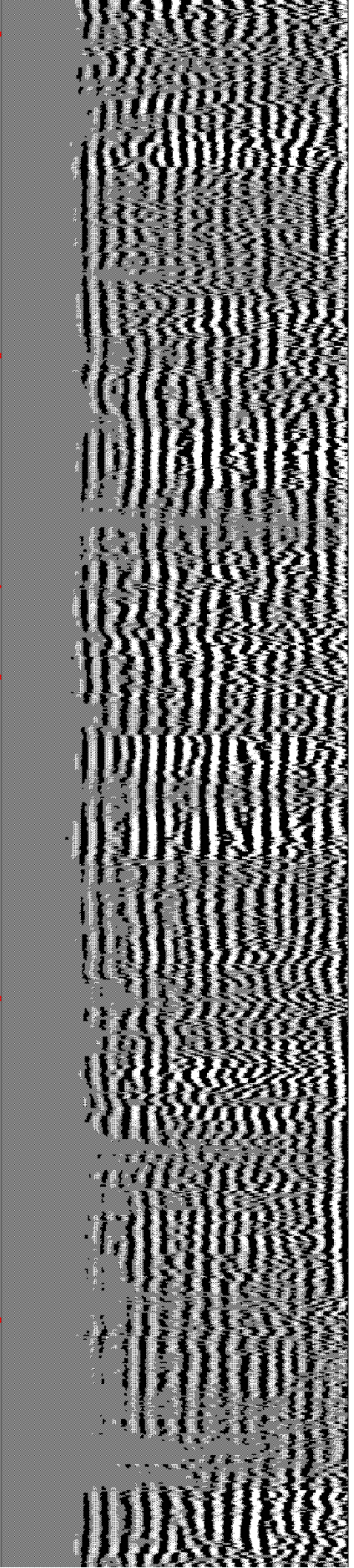
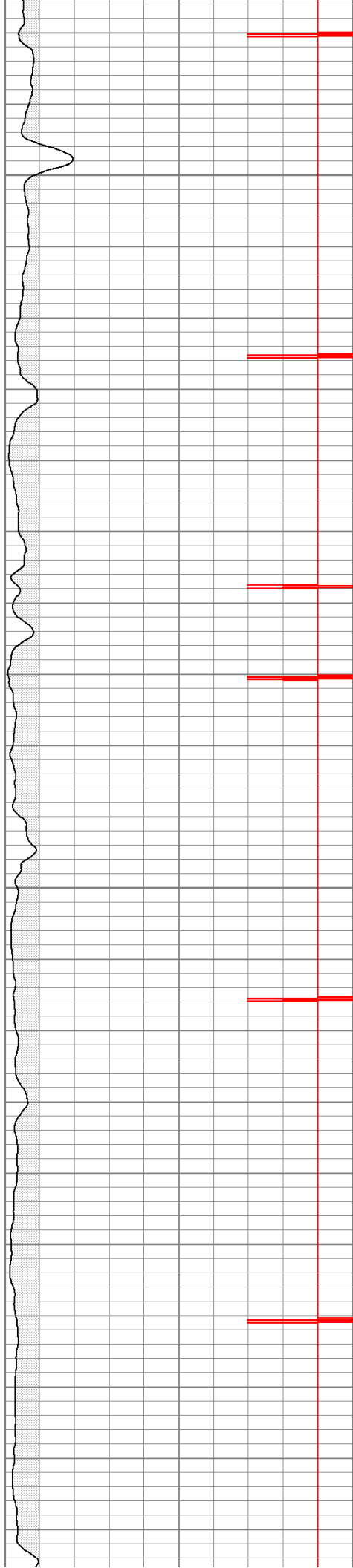


200

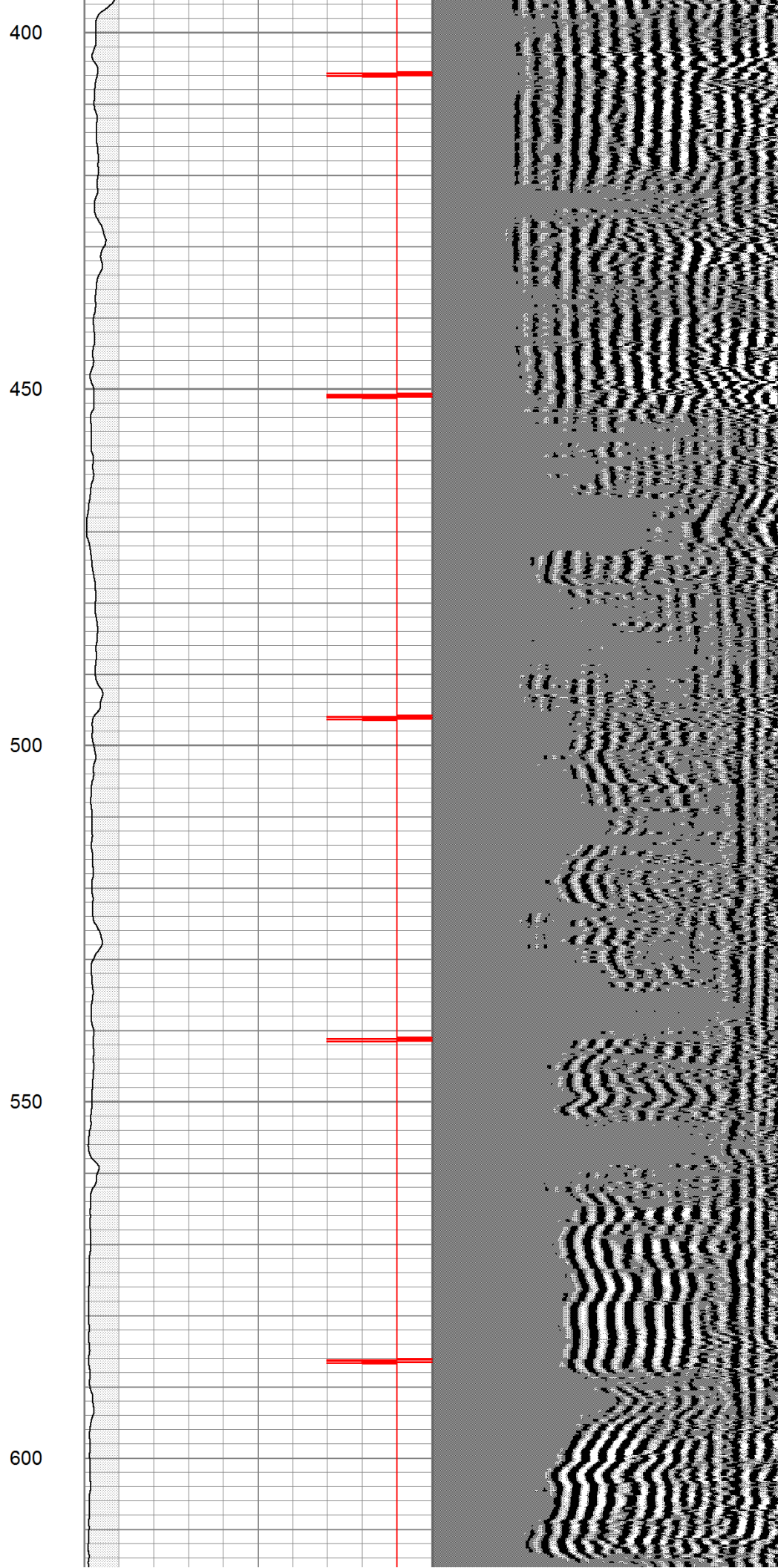
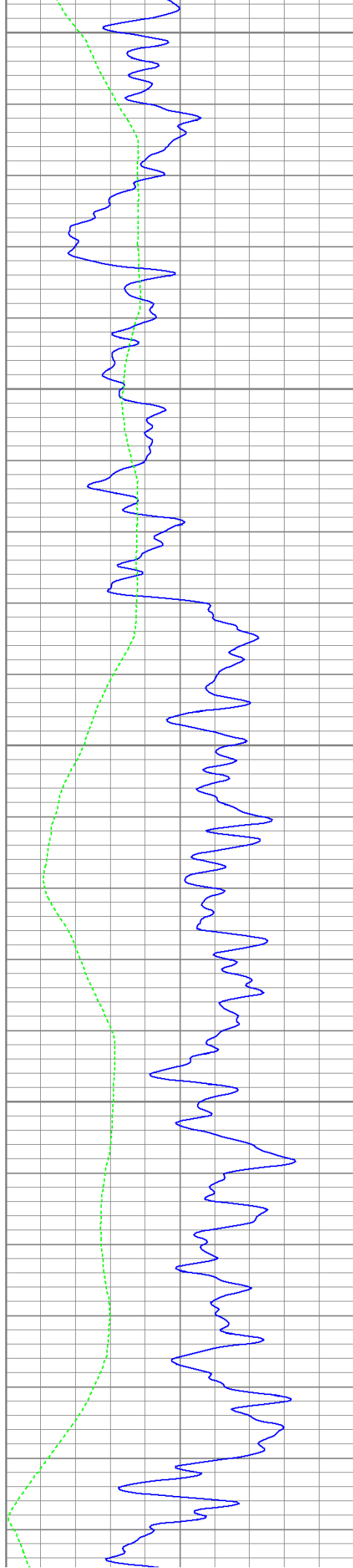
250

300

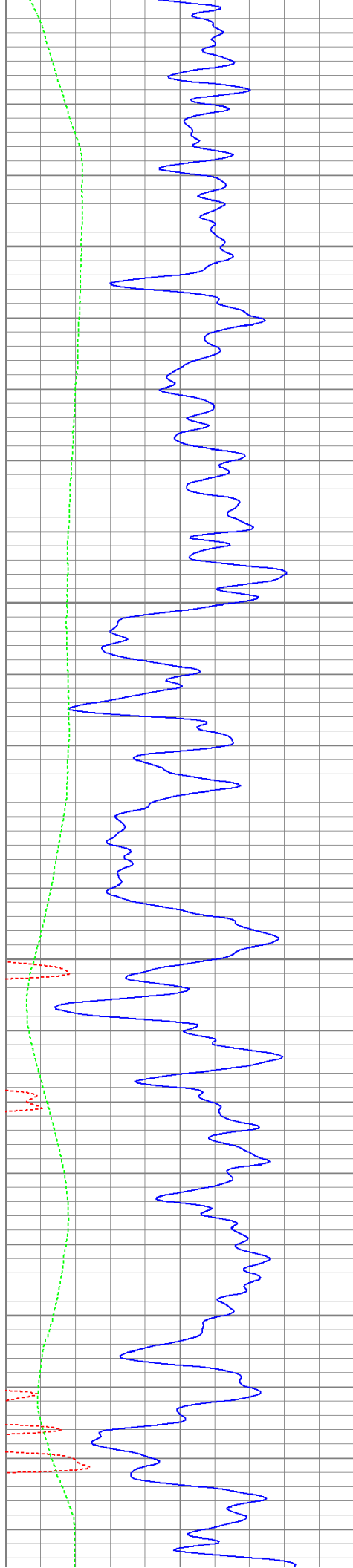
350









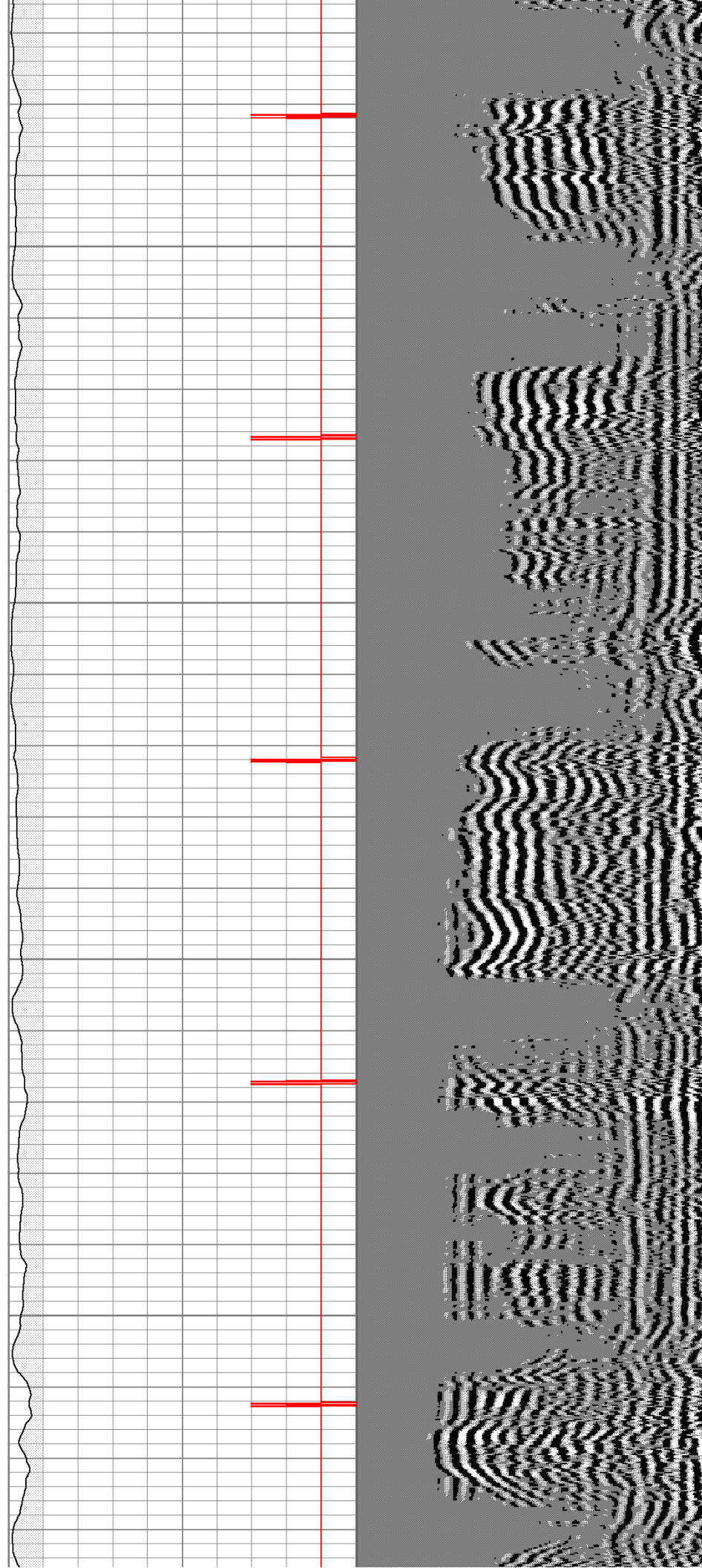


650

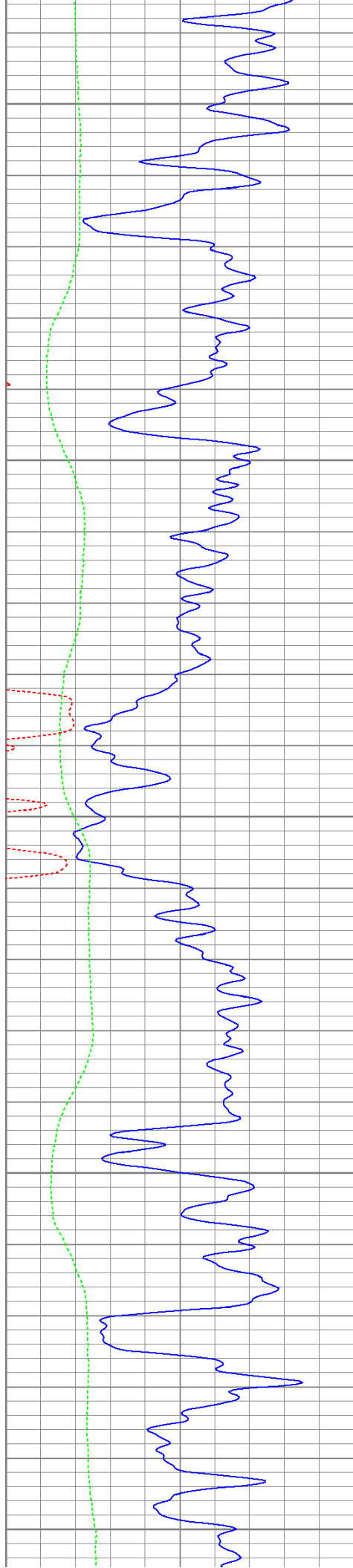
700

750

800







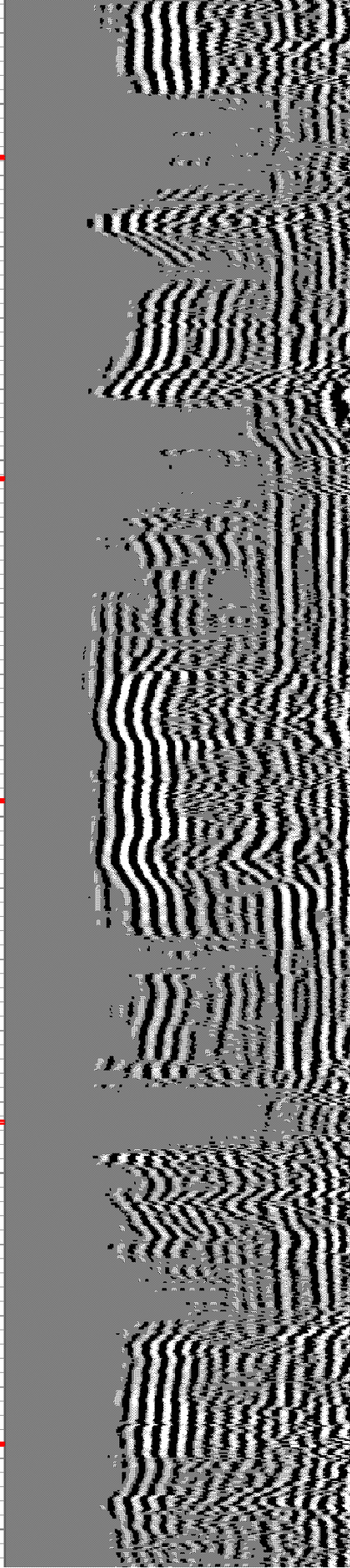
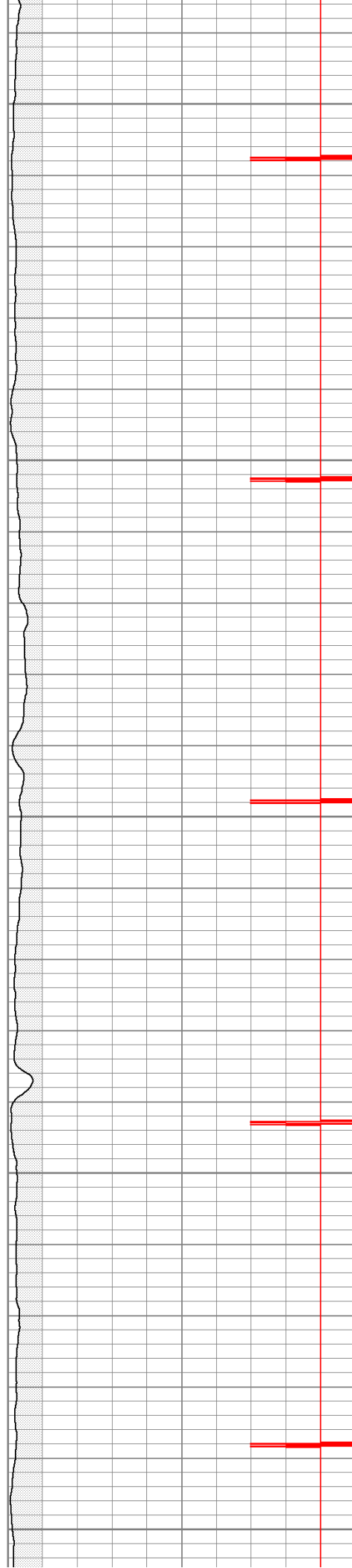
850

900

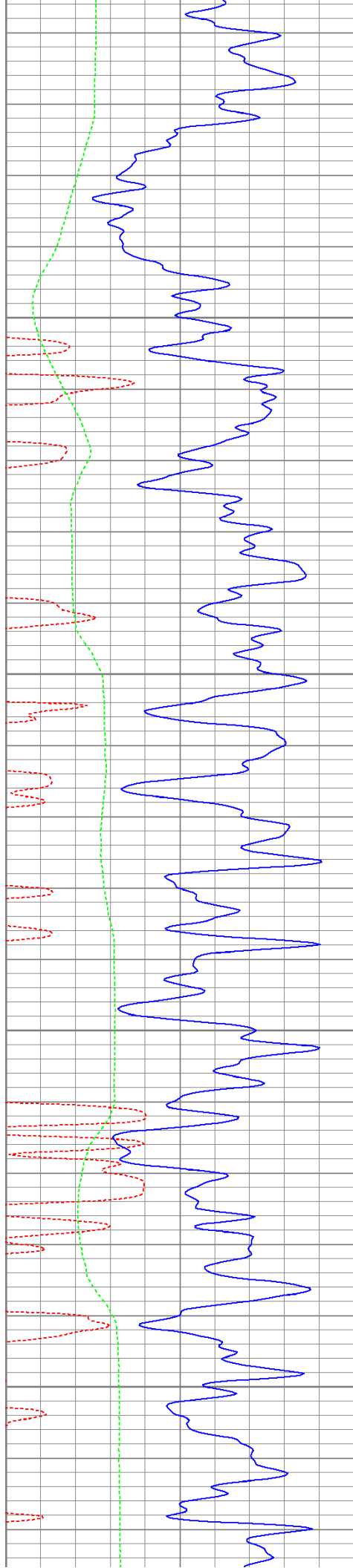
950

1000

1050





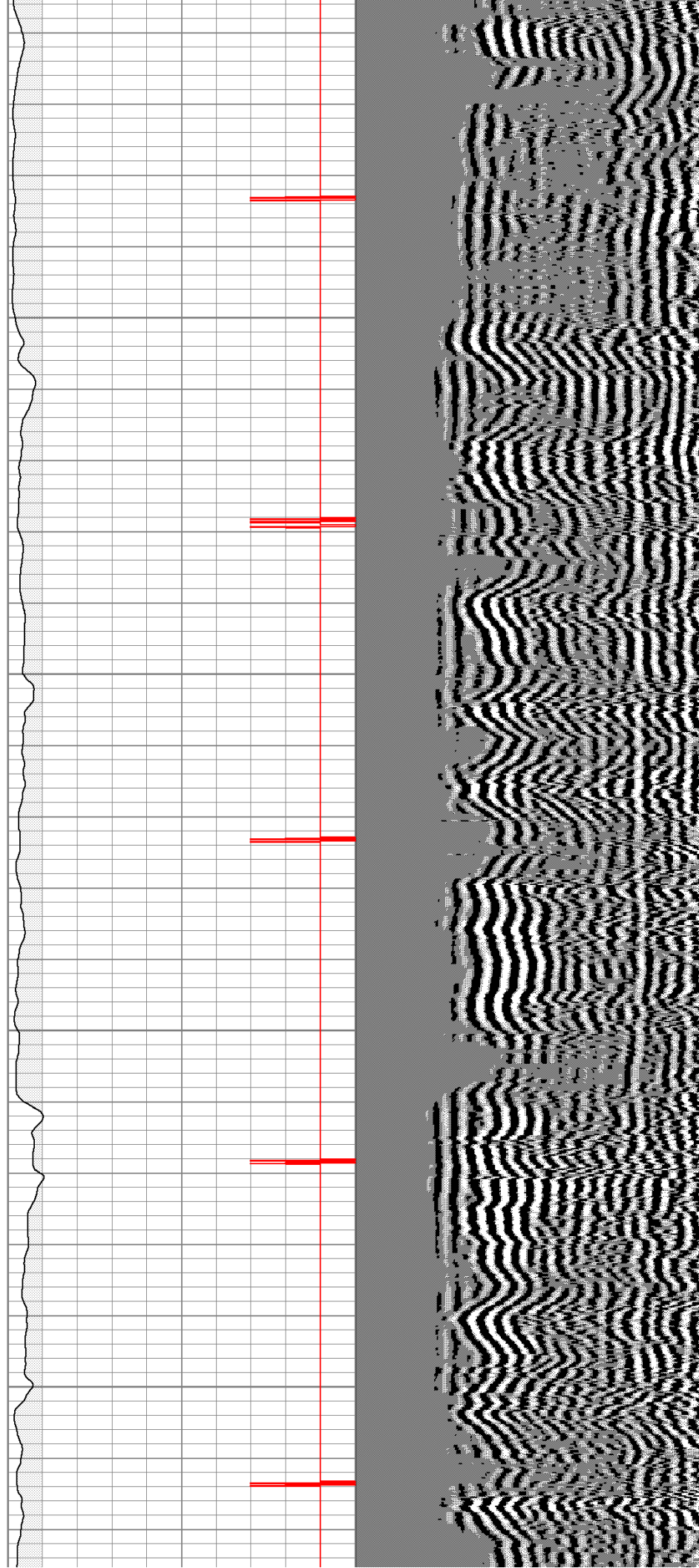


1100

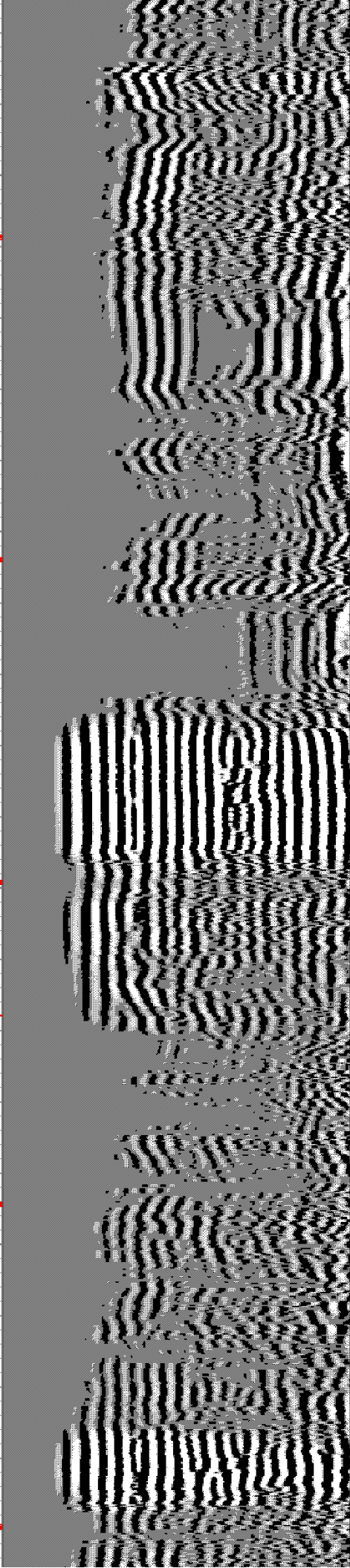
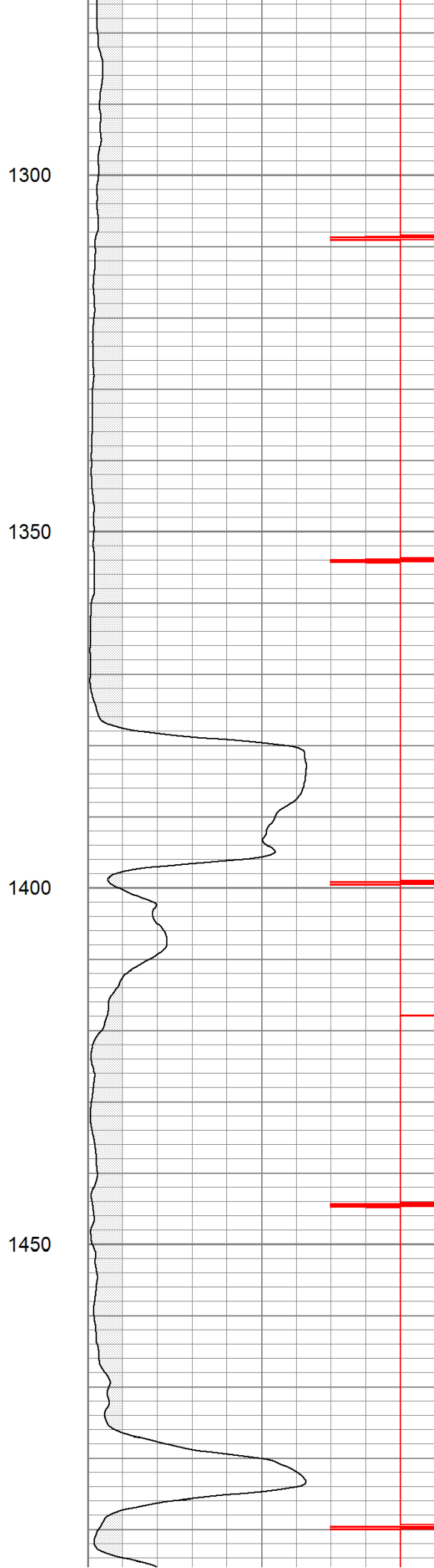
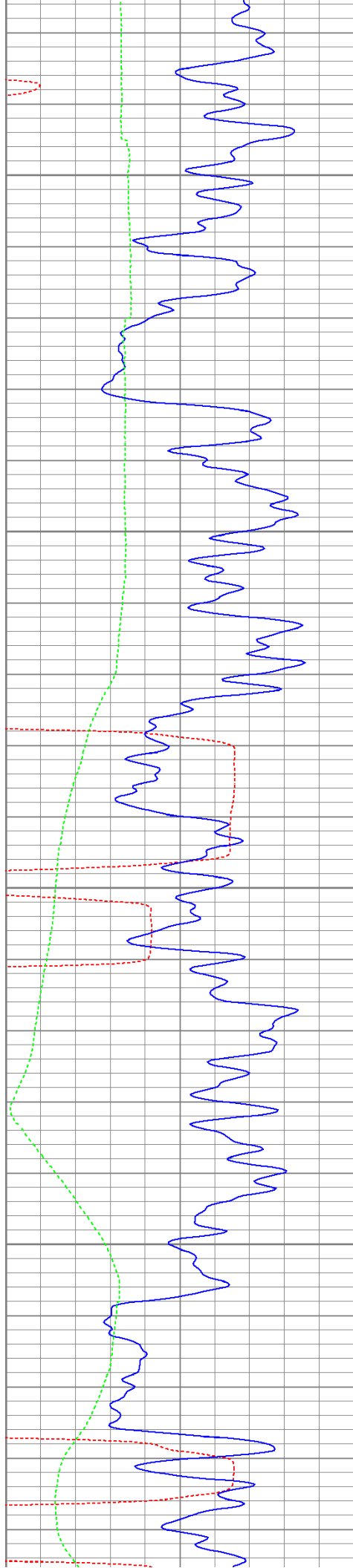
1150

1200

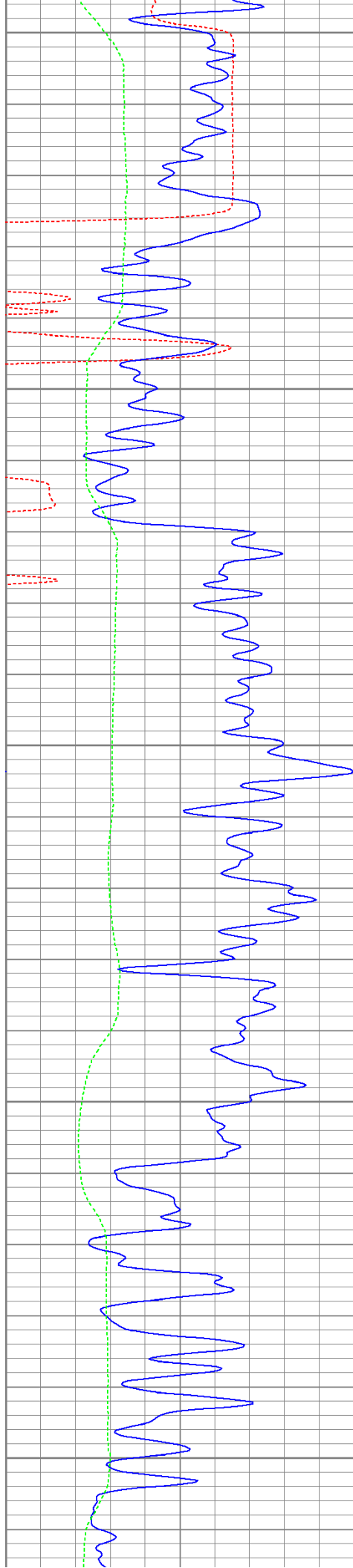
1250











1500

1550

1600

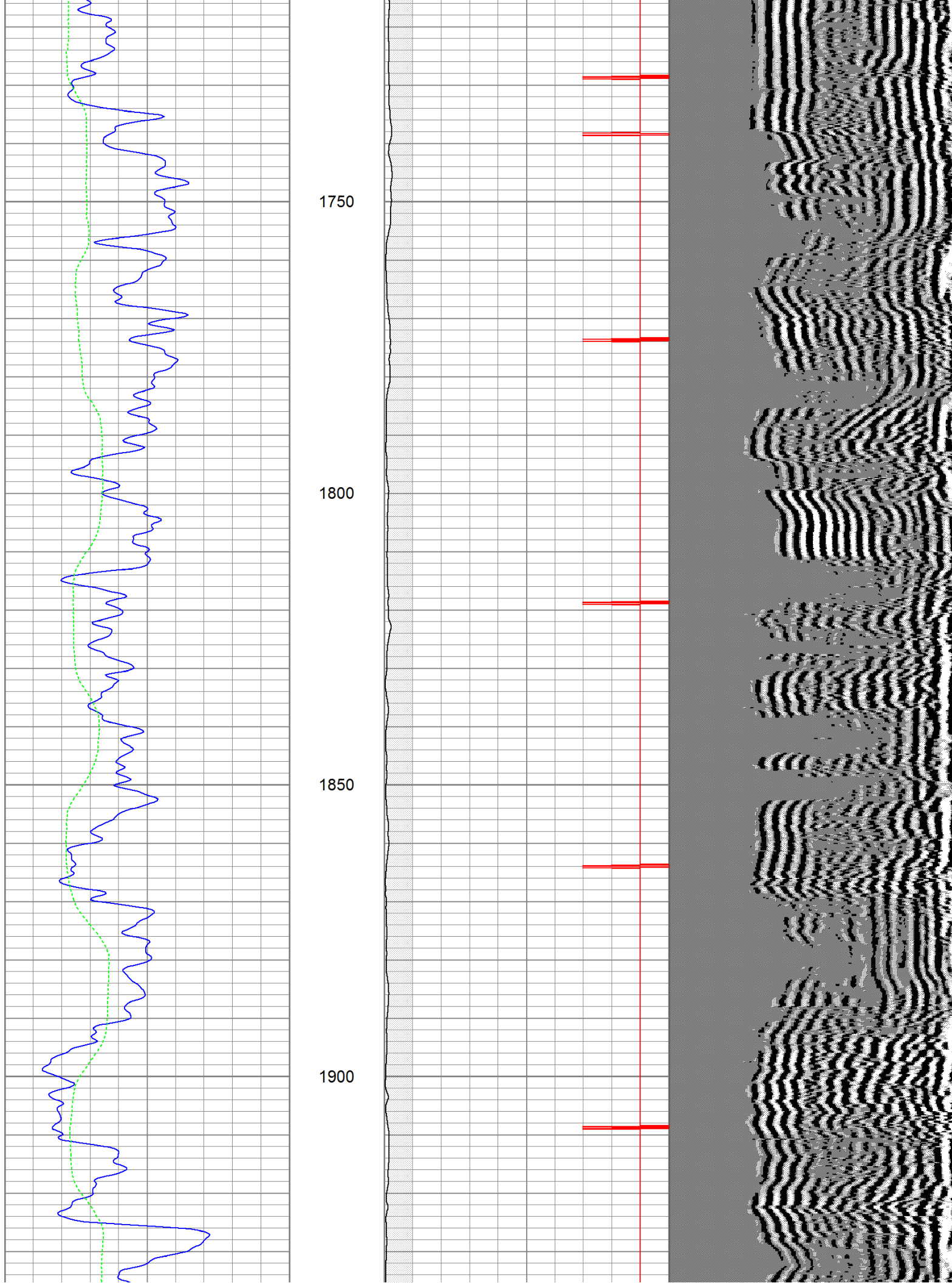
1650

1700

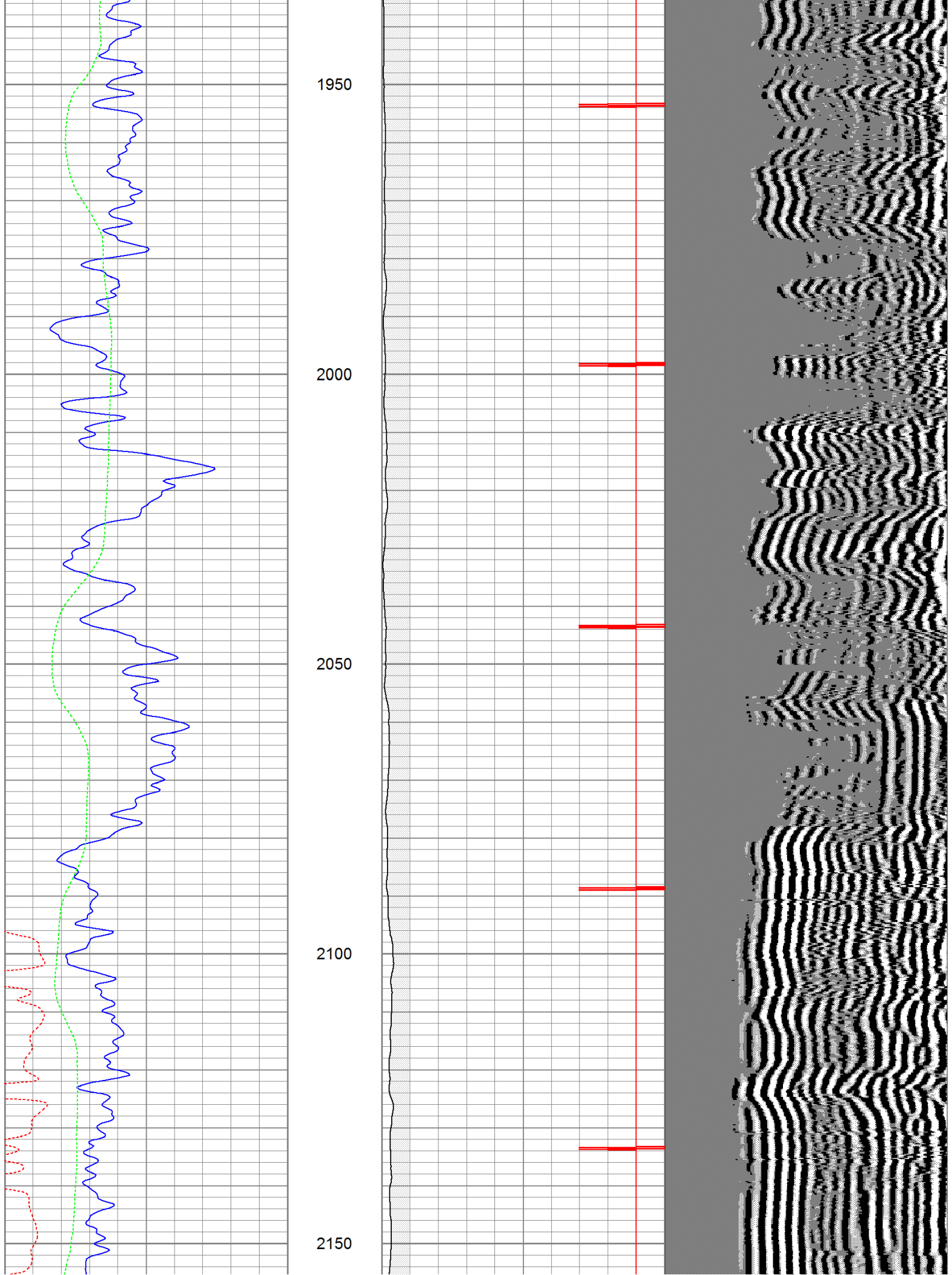


ECP →

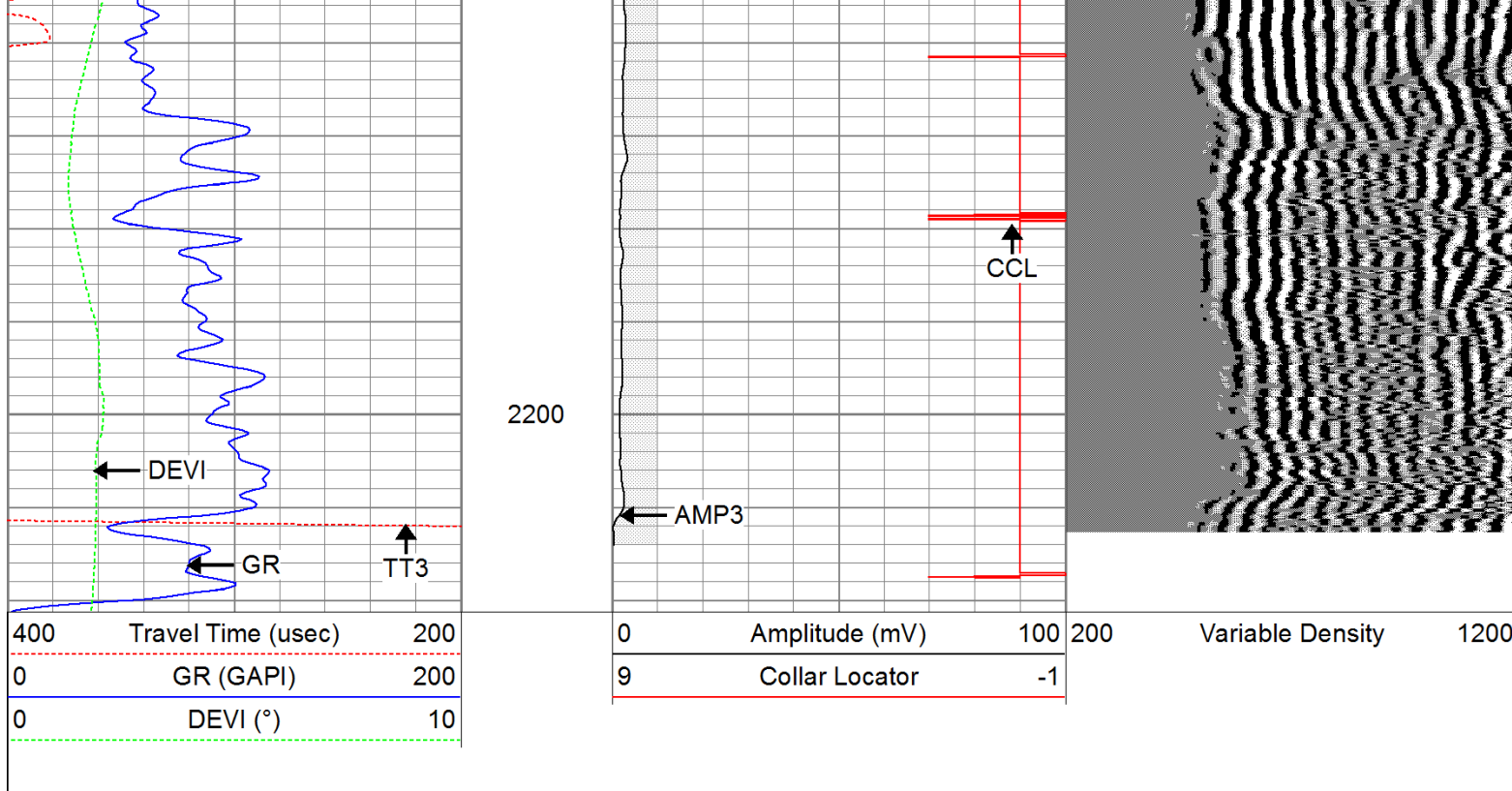








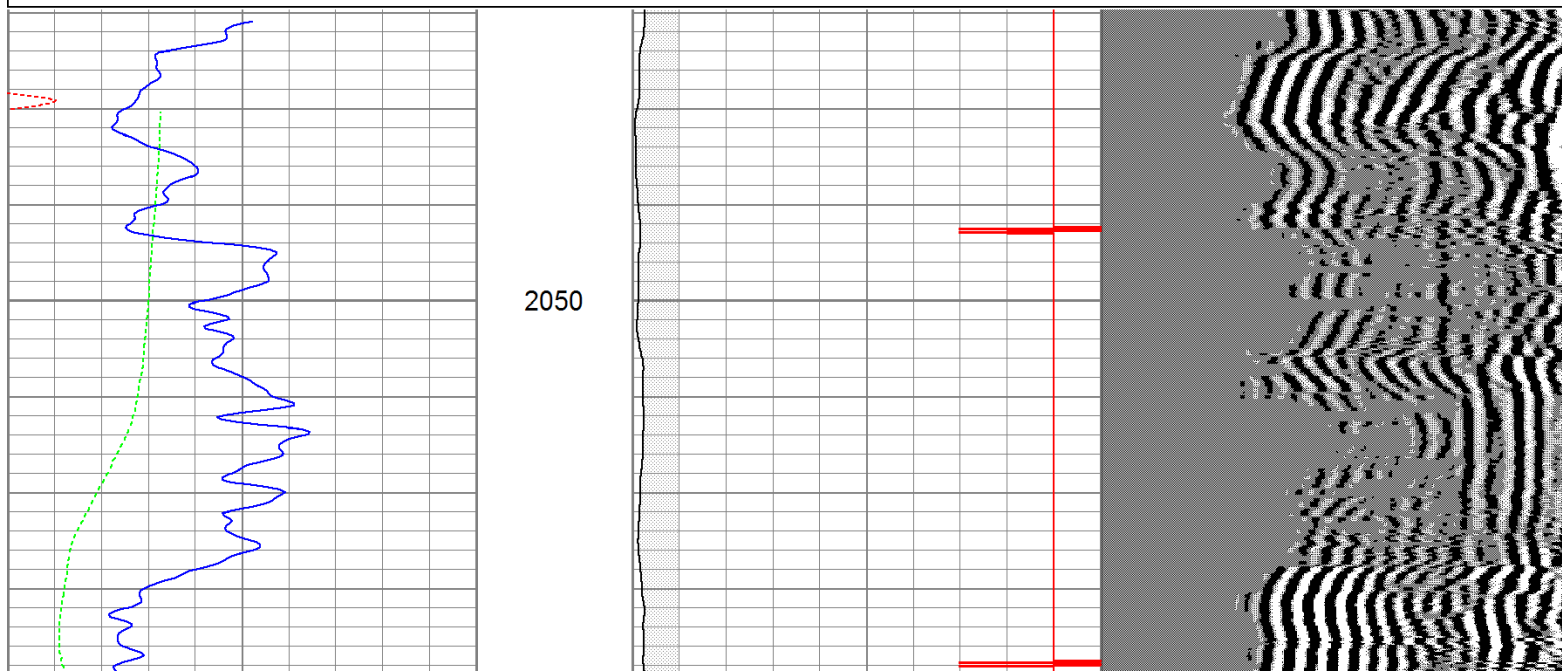




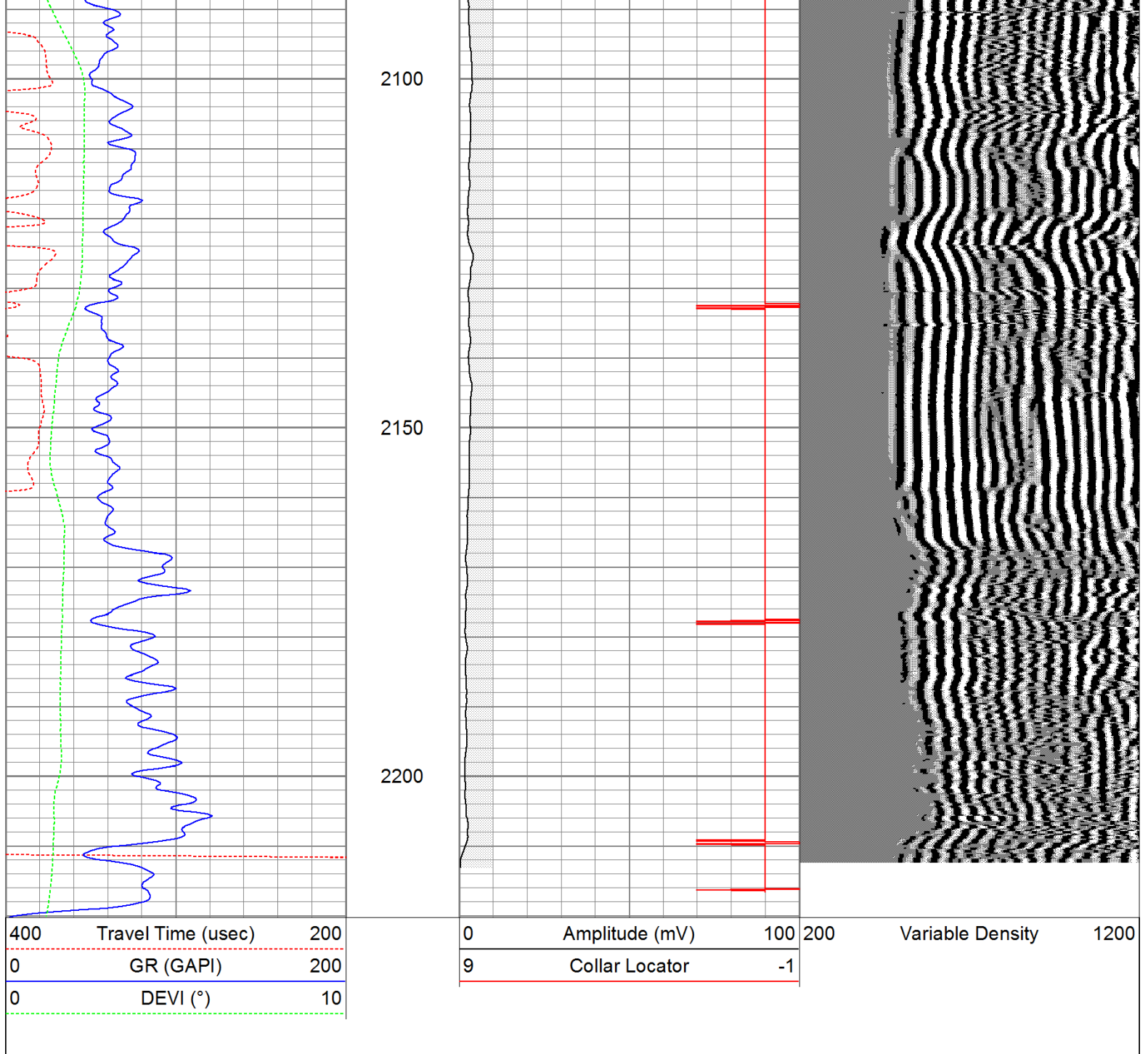
# Repeat Pass

Database File: ac30-0781011b.db  
 Dataset Pathname: pass1.1  
 Presentation Format: cbldig  
 Dataset Creation: Wed Aug 10 10:11:24 2011 by Calc Open-Cased 110302  
 Charted by: Depth in Feet scaled 1:240

400	Travel Time (usec)	200	0	Amplitude (mV)	100	200	Variable Density	1200
0	GR (GAPI)	200	9	Collar Locator	-1			
0	DEVI (°)	10						







### Calibration Report

Database File: ac30-0781011b.db  
 Dataset Pathname: pass2  
 Dataset Creation: Wed Aug 10 09:18:43 2011 by Log Open-Cased 110302

### Gamma Ray Calibration Report

Serial Number:	080616	
Tool Model:	275D_INC	
Performed:	Wed Aug 10 09:13:03 2011	
Calibrator Value:	200.0	GAPI
Background Reading:	50.0	cps
Calibrator Reading:	250.0	cps
Sensitivity:	1.0000	GAPI/cps

### Inclinometer Calibration Report



Performed: Wed Aug 10 09:13:09 2011

Low Read. High Read. Low Ref. High Ref.

X Accelerometer

-3585.20 3595.40 -1.00 1.00 gee

Y Accelerometer

-3619.40 3520.00 -1.00 1.00 gee

Z Accelerometer

### Cement Bond Log Calibration Report


Serial Number: 081024  
Tool Model: PROBEGITALCBL  
Performed: Wed Aug 10 09:18:37 2011

Depth: 93.4615 ft  
Casing Diameter: 5.5 in

3' Spacing 5' Spacing

Signal Zero: 0 0 mV  
Calibrated Amplitude: 85 85 mV  
Reading at Signal Zero: -0.00874023 -0.0092041 V  
Reading in Free Pipe: 1.72476 1.66304 V

Gain: 49.0339 50.83  
Offset: 0.428567 0.467844

Sensor	Offset (ft)	Schematic	Description	Len (ft)	OD (in)	Wt (lb)
			None	0.75	1.50	5.00
			Star	0.29	1.50	0.50
WVF3	9.04					
WVF5	8.04		CBL-PROBEGITALCBL (081024) PROBE DIGITAL CBL	8.75	2.75	106.50
			Star	0.29	1.50	0.50
CCL	3.50					
ACCX	1.83		GR-275D_INC (080616) 2-3/4" GR-CCL with Inclination	4.50	2.75	50.00
ACCY	1.83					
ACCZ	1.83					
GR	0.83					

Dataset: ac30-0781011b.db: field/well/run1/pass1  
Total Length: 14.58 ft  
Total Weight: 162.50 lb  
O.D. 2.75 in