
XTO ENERGY INC EBUSINESS

Apache Canyon 09-04

Las Animas County , Colorado

Cement Multiple Stages

18-Jul-2011

Job Site Documents

The Road to Excellence Starts with Safety

Sold To #: 353810		Ship To #: 2866176		Quote #:		Sales Order #: 8325895	
Customer: XTO ENERGY INC EBUSINESS				Customer Rep:			
Well Name: Apache Canyon			Well #: 09-04		API/UWI #:		
Field:		City (SAP): TRINIDAD		County/Parish: Las Animas		State: Colorado	
Contractor: ??			Rig/Platform Name/Num: ??				
Job Purpose: Cement Multiple Stages							
Well Type: Development Well				Job Type: Cement Multiple Stages			
Sales Person: FLING, MATTHEW			Srcv Supervisor: ROSALES, MATTHEW			MBU ID Emp #: 392095	

Job Personnel

HES Emp Name	Exp Hrs	Emp #	HES Emp Name	Exp Hrs	Emp #	HES Emp Name	Exp Hrs	Emp #
BULINSKI, MATTHEW J	5.5	483865	DIRKS, RICHARD E	5.5	485940	KENNEDY, HERRON	5.5	498356
LYNCH, JACK William	5.5		MCKAY, ADAM	5.5	498253	ROSALES, MATTHEW John	5.5	392095
VIGIL, NICHOLAS	5.5	443481						

Equipment

HES Unit #	Distance-1 way	HES Unit #	Distance-1 way	HES Unit #	Distance-1 way	HES Unit #	Distance-1 way
10246780C	50 mile	10824253C	50 mile	11036295C	50 mile	11515861C	50 mile
11562562	50 mile	11562570C	50 mile	11605598	50 mile		

Job Hours

Date	On Location Hours	Operating Hours	Date	On Location Hours	Operating Hours	Date	On Location Hours	Operating Hours
07/18/11	5.5	2.5						
TOTAL			<i>Total is the sum of each column separately</i>					

Job

Job Times

Formation Name	Formation Depth (MD)	Top	Bottom	Called Out	Date	Time	Time Zone
Form Type			BHST	On Location	18 - Jul - 2011	06:30	MST
Job depth MD	2549. ft		Job Depth TVD	Job Started	18 - Jul - 2011	09:00	MST
Water Depth			Wk Ht Above Floor	Job Completed	18 - Jul - 2011	10:50	MST
Perforation Depth (MD)	From		To	Departed Loc	18 - Jul - 2011	12:00	MST

Well Data

Description	New / Used	Max pressure psig	Size in	ID in	Weight lbf/ft	Thread	Grade	Top MD ft	Bottom MD ft	Top TVD ft	Bottom TVD ft
13 3/8" Openhole				7.875				813.	2545.		
Multiple Stage Cementer	Unknown								1808.		
5 1/2" Production Casing	Unknown		5.5	4.95	15.5		J-55		2543.		
8 5/8" Surface Casing	Unknown		8.625	8.097	24.		J-55		813.		

Tools and Accessories

Type	Size	Qty	Make	Depth	Type	Size	Qty	Make	Depth	Type	Size	Qty	Make
Guide Shoe					Packer					Top Plug			
Float Shoe					Bridge Plug					Bottom Plug			
Float Collar					Retainer					SSR plug set			
Insert Float										Plug Container			
Stage Tool										Centralizers			

Miscellaneous Materials

Gelling Agt	Conc	Surfactant	Conc	Acid Type	Qty	Conc %
Treatment Fld	Conc	Inhibitor	Conc	Sand Type	Size	Qty

Fluid Data

Stage/Plug #: 1										
Fluid #	Stage Type	Fluid Name	Qty	Qty uom	Mixing Density lbm/gal	Yield ft ³ /sk	Mix Fluid Gal/sk	Rate bbl/min	Total Mix Fluid Gal/sk	
1	FRESH WATER			bbl	8.33	.0	.0	.0		
2	GELLED WATER		30.00	bbl	8.33	.0	.0	.0		
0.2 gal/Mgal		LGC-VI UC, BULK (101582755)								
3	TUNED LIGHT TRINIDAD B3	TUNED LIGHT (TM) SYSTEM (452984)	120.0	sacks	10.	2.28	8.24		8.24	
8.24 Gal		FRESH WATER								
4	DISPLACEMENT			bbl	8.33	.0	.0	.0		
Stage/Plug #: 2										
Fluid #	Stage Type	Fluid Name	Qty	Qty uom	Mixing Density uom	Yield uom	Mix Fluid uom	Rate uom	Total Mix Fluid uom	
1	FRESH WATER			bbl	8.33	.0	.0	.0		
2	GELLED WATER		30.00	bbl	8.33	.0	.0	.0		
0.2 gal/Mgal		LGC-VI UC, BULK (101582755)								
3	TUNED LIGHT TRINIDAD B3	TUNED LIGHT (TM) SYSTEM (452984)	200.0	sacks	10.	2.28	8.24		8.24	
8.24 Gal		FRESH WATER								
4	DISPLACEMENT			bbl	8.33	.0	.0	.0		
Calculated Values		Pressures		Volumes						
Displacement		Shut In: Instant		Lost Returns		Cement Slurry		Pad		
Top Of Cement		5 Min		Cement Returns		Actual Displacement		Treatment		
				31BBL TOTAL						
Frac Gradient		15 Min		Spacers		Load and Breakdown		Total Job 301.1		
Rates										
Circulating		Mixing		Displacement		Avg. Job		4		
Cement Left In Pipe		Amount 47 ft		Reason Shoe Joint						
Frac Ring # 1 @		ID	Frac ring # 2 @		ID	Frac Ring # 3 @		ID	Frac Ring # 4 @	
The Information Stated Herein Is Correct					Customer Representative Signature					

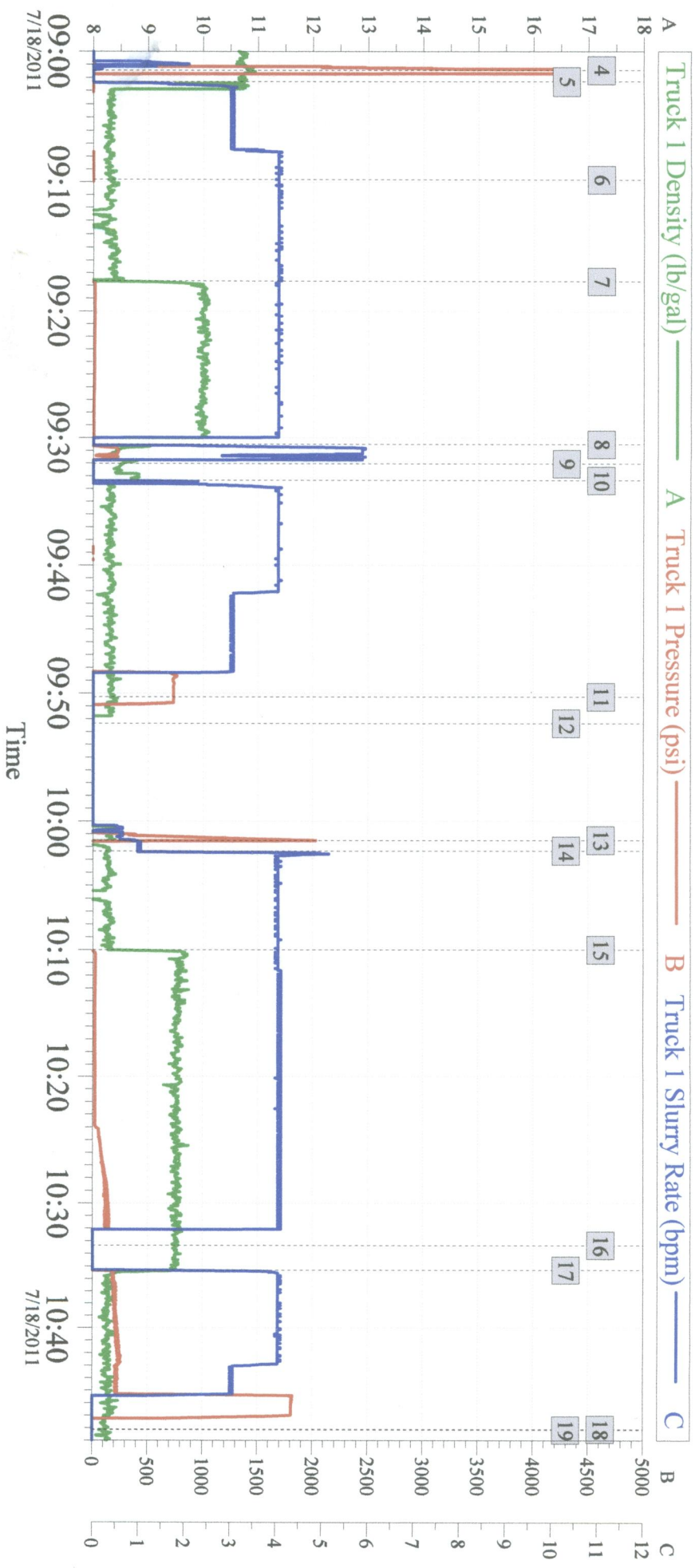
The Road to Excellence Starts with Safety

Sold To #: 353810	Ship To #: 2866176	Quote #:	Sales Order #: 8325895
Customer: XTO ENERGY INC EBUSINESS		Customer Rep:	
Well Name: Apache Canyon	Well #: 09-04	API/UWI #:	
Field:	City (SAP): TRINIDAD	County/Parish: Las Animas	State: Colorado
Legal Description:			
Lat:		Long:	
Contractor: ??		Rig/Platform Name/Num: ??	
Job Purpose: Cement Multiple Stages			Ticket Amount:
Well Type: Development Well		Job Type: Cement Multiple Stages	
Sales Person: FLING, MATTHEW		Srcv Supervisor: ROSALES, MATTHEW/MBU ID Emp #: 392095	

Activity Description	Date/Time	Cht #	Rate bbl/min	Volume bbl		Pressure psig		Comments
				Stage	Total	Tubing	Casing	
Pre-Job Safety Meeting	07/18/2011 08:50							
Start Job	07/18/2011 09:00							
Test Lines	07/18/2011 09:01		0.5	0.5			4289.0	
Pump Spacer 1	07/18/2011 09:02		4	22	22		.0	WATER SPACER
Pump Spacer 2	07/18/2011 09:09		4	30	52		.0	GEL WATER W/POLYFLAKE
Pump Cement	07/18/2011 09:17		4	49	101		.0	120SKS MIXED WITH WATER PROVIDED BY RIG
Drop Plug	07/18/2011 09:32							
Pump Displacement	07/18/2011 09:33		4	51.7	152.7		.0	
Bump Plug	07/18/2011 09:50						731.0	
Shutdown	07/18/2011 09:51							
Drop Opening Device For Multiple Stage Cementer	07/18/2011 09:52							
Open Multiple Stage Cementer	07/18/2011 10:01		0.5	1			2021.0	
Pump Spacer 1	07/18/2011 10:02		4	30	182.7		.0	GEL WATER W/POLYFLAKE
Pump Cement	07/18/2011 10:10		4	81.9	264.6		100.0	200SKS MIXED WITH WATER PROVIDED BY RIG
Shutdown	07/18/2011 10:32							
Drop Plug	07/18/2011 10:33							
Pump Displacement	07/18/2011 10:35		4	36.5	301.1		240.0	

Activity Description	Date/Time	Cht #	Rate bbl/min	Volume bbl		Pressure psig		Comments
				Stage	Total	Tubing	Casing	
Close Multiple Stage Cementer	07/18/2011 10:48		3				1800. 0	
Check Floats	07/18/2011 10:48							
End Job	07/18/2011 10:50							9BBL CMT TO SURFACE FROM FIRST STAGE, 24BBL CMT TO SURFACE FROM SECOND STAGE

XTO - Apache Canyon 09-04 Production



Global Event Log			
Intersection	TIP	Intersection	TIP
4 Test Lines	09:01:27 4289	5 Water Spacer	09:02:19 -3.889
7 Pump Cement	09:17:38 -12.15	8 Clean Lines	09:30:30 -25.28
10 Pump Displacement	09:33:21 -27.40	11 Bump Plug	09:50:17 731.1
13 Open Multiple Stage Cementer	10:01:31 2011	14 Gel Spacer w/PolyFlake	10:02:20 -24.31
16 Drop Top Plug	10:33:22 -16.66	17 Pump Displacement	10:35:20 -3.109
19 End Job	10:48:10 -20.42	18 Close Multiple Stage Cementer	10:48:07 -19.45
		6 Gel Spacer w/Polyflake	09:09:48 -0.727
		9 Drop Top Plug	09:32:02 -29.17
		12 Drop Multiple Stage Open Tool	09:52:21 -13.37
		15 Pump Cement	10:10:00 -10.56

Customer: XTO	Job Date: 18-Jul-2011	Sales Order #: 8325895
Well Description: Apache Canyon 09-04	Halliburton Operator: Nick Vigil	XTO Customer Rep.: Ron Coffee
Halliburton Service Supervisor: Matthew J. Rosales		OptiCem v6.4.10
		18-Jul-11 10:57