
XTO ENERGY INC EBUSINESS

Apache Canyon 09-04

Las Animas County , Colorado

Cement Surface Casing

17-Jul-2011

Job Site Documents

The Road to Excellence Starts with Safety

Sold To #: 353810	Ship To #: 2866176	Quote #:	Sales Order #: 8325894
Customer: XTO ENERGY INC EBUSINESS		Customer Rep:	
Well Name: Apache Canyon	Well #: 09-04	API/UWI #:	
Field:	City (SAP): TRINIDAD	County/Parish: Las Animas	State: Colorado
Contractor: Pense Drilling	Rig/Platform Name/Num: 19		
Job Purpose: Cement Surface Casing			
Well Type: Development Well		Job Type: Cement Surface Casing	
Sales Person: FLING, MATTHEW	Srvc Supervisor: ROSALES, MATTHEW	MBU ID Emp #: 392095	

Job Personnel

HES Emp Name	Exp Hrs	Emp #	HES Emp Name	Exp Hrs	Emp #	HES Emp Name	Exp Hrs	Emp #
KENNEDY, HERRON	4	498356	MCKAY, ADAM	4	498253	NIELSON, BRANDON K	4	479703
PAUMEN, CORD Anthony	4	453759	ROSALES, MATTHEW John	4	392095			

Equipment

HES Unit #	Distance-1 way	HES Unit #	Distance-1 way	HES Unit #	Distance-1 way	HES Unit #	Distance-1 way
10824253C	50 mile	11527037	50 mile	11562544C	50 mile	11605598	50 mile

Job Hours

Date	On Location Hours	Operating Hours	Date	On Location Hours	Operating Hours	Date	On Location Hours	Operating Hours
07/16/11	1.5	07/17/11	1.5					
TOTAL			<i>Total is the sum of each column separately</i>					

Job

Job Times

Formation Name	Date	Time	Time Zone				
Formation Depth (MD) Top	Called Out	16 - Jul - 2011	18:30	MST			
Bottom	On Location	16 - Jul - 2011	22:30	MST			
Form Type	BHST	Job Started	17 - Jul - 2011	00:38	MST		
Job depth MD	555. ft	Job Depth TVD	555. ft	Job Completed	17 - Jul - 2011	01:37	MST
Water Depth		Wk Ht Above Floor		Departed Loc	17 - Jul - 2011	02:30	MST
Perforation Depth (MD) From		To					

Well Data

Description	New / Used	Max pressure psig	Size in	ID in	Weight lbm/ft	Thread	Grade	Top MD ft	Bottom MD ft	Top TVD ft	Bottom TVD ft
11" Openhole				11.				50.	555.		
13 3/8" Conductor Casing	Unknown		13.375	12.715	48.			.	50.		
SURFACE	New		8.625	8.097	24.			.	545.		

Tools and Accessories

Type	Size	Qty	Make	Depth	Type	Size	Qty	Make	Depth	Type	Size	Qty	Make
Guide Shoe					Packer					Top Plug			
Float Shoe					Bridge Plug					Bottom Plug			
Float Collar					Retainer					SSR plug set			
Insert Float										Plug Container			
Stage Tool										Centralizers			

Miscellaneous Materials

Gelling Agt	Conc	Surfactant	Conc	Acid Type	Qty	Conc %
Treatment Fld	Conc	Inhibitor	Conc	Sand Type	Size	Qty

Fluid Data

Stage/Plug #: 1									
Fluid #	Stage Type	Fluid Name	Qty	Qty uom	Mixing Density lbm/gal	Yield ft/sk	Mix Fluid Gal/sk	Rate bbl/min	Total Mix Fluid Gal/sk

Stage/Plug #: 1

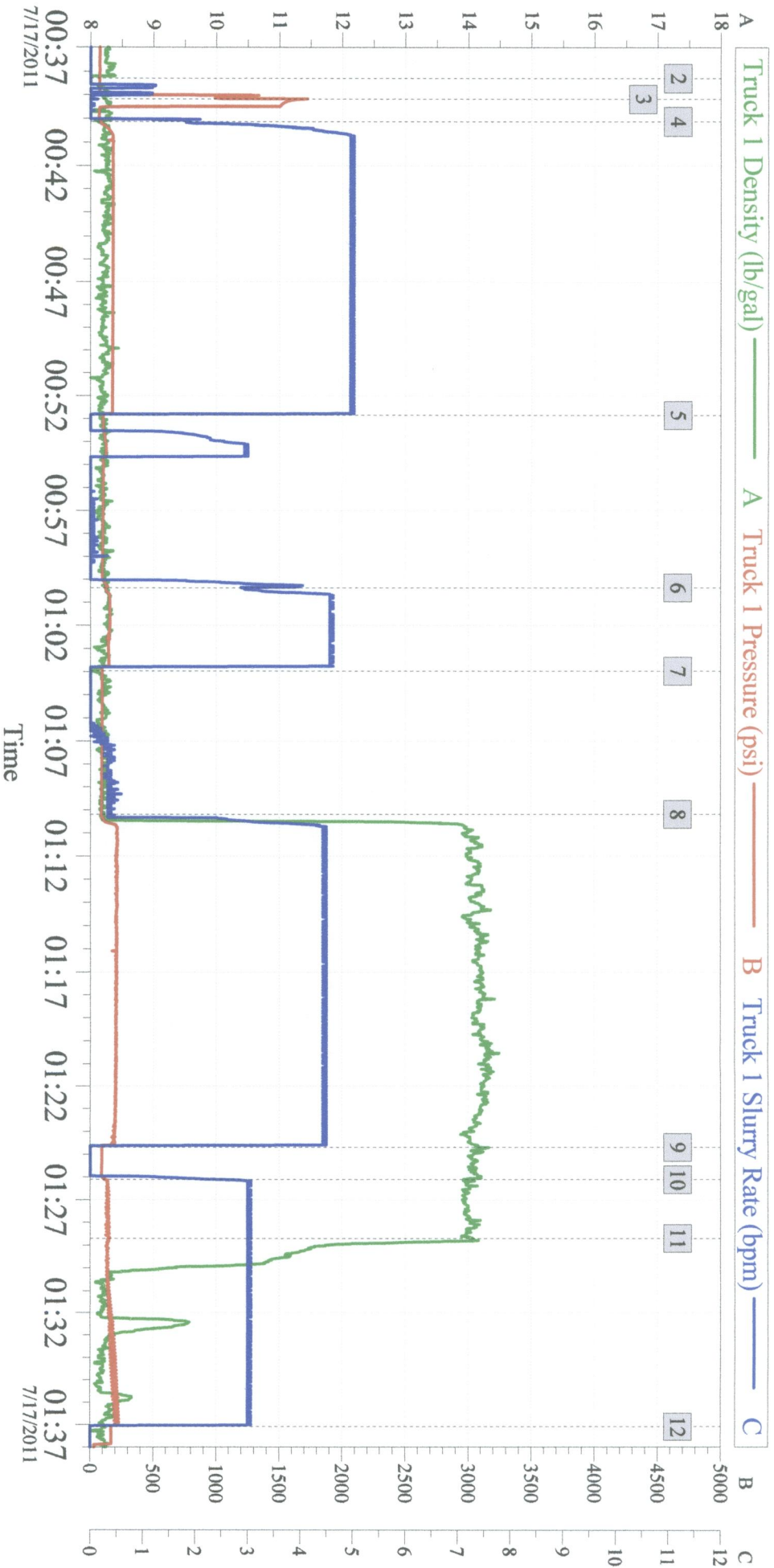
Stage/Plug #: 1									
Fluid #	Stage Type	Fluid Name	Qty	Qty uom	Mixing Density lbm/gal	Yield ft ³ /sk	Mix Fluid Gal/sk	Rate bbl/min	Total Mix Fluid Gal/sk
1	FRESH WATER			bbl	8.33	.0	.0	.0	
2	Trinidad Surface Blend	TRINIDAD SURFACE BLEND - SBM (137081)	275.0	sacks	14.	1.66	7.66	4.0	7.66
	0.125 lbm	POLY-E-FLAKE (101216940)							
	2 %	CAL-SEAL 60, 50 LB BAG (101217146)							
	2 %	ECONOLITE (100001580)							
	5 lbm	GILSONITE, 50 LB BAG (100001618)							
	0.2 %	VERSASET, 55 LB SK (101376573)							
	6 %	SALT, 100 LB BAG (100003652)							
	7.66 Gal	FRESH WATER							
3	DISPLACEMENT			bbl	8.33	.0	.0	.0	
Calculated Values		Pressures			Volumes				
Displacement	25	Shut In: Instant		Lost Returns	NO	Cement Slurry	72	Pad	
Top Of Cement	SURFACE	5 Min		Cement Returns	YES	Actual Displacement	25	Treatment	
Frac Gradient		15 Min		Spacers	77	Load and Breakdown		Total Job	174
Rates									
Circulating		Mixing		Displacement		Avg. Job			
Cement Left In Pipe	Amount	152 ft	Reason	Shoe Joint					
Frac Ring # 1 @	ID	Frac ring # 2 @	ID	Frac Ring # 3 @	ID	Frac Ring # 4 @	ID		
The Information Stated Herein Is Correct				Customer Representative Signature					

The Road to Excellence Starts with Safety

Sold To #: 353810	Ship To #: 2866176	Quote #:	Sales Order #: 8325894
Customer: XTO ENERGY INC EBUSINESS		Customer Rep:	
Well Name: Apache Canyon	Well #: 09-04	API/UWI #:	
Field:	City (SAP): TRINIDAD	County/Parish: Las Animas	State: Colorado
Legal Description:			
Lat:		Long:	
Contractor: Pense Drilling		Rig/Platform Name/Num: 19	
Job Purpose: Cement Surface Casing			Ticket Amount:
Well Type: Development Well		Job Type: Cement Surface Casing	
Sales Person: FLING, MATTHEW		Srcv Supervisor: ROSALES, MATTHEW/MBU ID Emp #: 392095	

Activity Description	Date/Time	Cht #	Rate bbl/min	Volume bbl		Pressure psig		Comments
				Stage	Total	Tubing	Casing	
Arrive At Loc	07/16/2011 22:30							RIG IS DRILLING
Assessment Of Location Safety Meeting	07/16/2011 22:35							HAZARD HUNT, JSA, MEET AND GREET
Pre-Rig Up Safety Meeting	07/16/2011 22:39							PINCH POINTS, HOUSEKEEPING, TEAMWORK
Rig-Up Equipment	07/16/2011 22:39							
Rig-Up Completed	07/16/2011 22:39							
Other	07/16/2011 22:45							SPOT TRUCKS
Pre-Job Safety Meeting	07/17/2011 00:30							
Start Job	07/17/2011 00:38							
Circulate Well	07/17/2011 00:40		4	62			100.0	
Shutdown	07/17/2011 00:52							CHECK FOR FALL BACK
Pump Spacer 1	07/17/2011 01:00		4	15			145.0	LOST CIRC. PILL
Pump Cement	07/17/2011 01:10		4.5	64			150.0	275SKS MIXED WITH WATER PROVIDED BY RIG
Shutdown	07/17/2011 01:24							CHECK FOR FALL BACK
Pump Cement	07/17/2011 01:26		3	8			150.0	PUMP REMAINDER OF TUB
Pump Displacement	07/17/2011 01:28		3	25			150.0	
Shut In Well	07/17/2011 01:37						164.0	ISIP 164PSI
End Job	07/17/2011 01:40							

XTO - APACHE CANYON 09-04 SURFACE



Intersection		TIP	Global Event Log		TIP	Intersection		TIP			
2	Start Job	00:38:18	71.68	3	Test Lines	00:39:11	1694	4	Water Spacer	00:40:08	79.73
5	Shut Down Check Fall Back	00:52:50	95.31	6	Lost Circ Pill	01:00:22	119.6	7	Shutdown Mix Cement	01:03:58	90.90
8	Pump Cement	01:10:11	86.53	9	Shut Down Check for Fall Back	01:24:42	93.00	10	Pump Remainder of CMT Tub	01:26:07	112.8
11	Pump Displacement	01:28:42	147.4	12	Shut In Well	01:37:05	165.4				

Customer: XTO
 Well Description: Apache Canyon 09-04
 Halliburton Service Supervisor: Matthew J. Rosales

Job Date: 17-Jul-2011
 Halliburton Operator:

Sales Order #: 8325894

OptiCem v6.4.10
 17-Jul-11 01:48