
XTO ENERGY INC EBUSINESS

Apache Canyon 09-04

Las Animas County , Colorado

Cement Conductor Casing

16-Jul-2011

Job Site Documents

The Road to Excellence Starts with Safety

Sold To #: 353810	Ship To #: 2866176	Quote #:	Sales Order #: 8324691
Customer: XTO ENERGY INC EBUSINESS		Customer Rep:	
Well Name: Apache Canyon		Well #: 09-04	API/UWI #:
Field:	City (SAP): TRINIDAD	County/Parish: Las Animas	State: Colorado
Contractor: Pense Drilling		Rig/Platform Name/Num: 19	
Job Purpose: Cement Conductor Casing			
Well Type: Development Well		Job Type: Cement Conductor Casing	
Sales Person: FLING, MATTHEW		Srvc Supervisor: ROSALES, MATTHEW	MBU ID Emp #: 392095

Job Personnel

HES Emp Name	Exp Hrs	Emp #	HES Emp Name	Exp Hrs	Emp #	HES Emp Name	Exp Hrs	Emp #
CHAVEZ, JEROME Christophe	4.5	458298	DIRKS, RICHARD E	4.5	485940	KENNEDY, HERRON	4.5	498356
MCKAY, ADAM	4.5	498253	NIELSON, BRANDON K	4.5	479703	PAUMEN, CORD Anthony	4.5	453759
ROSALES, MATTHEW John	4.5	392095						

Equipment

HES Unit #	Distance-1 way	HES Unit #	Distance-1 way	HES Unit #	Distance-1 way	HES Unit #	Distance-1 way
10824253C	50 mile	11527037	50 mile	11562544C	50 mile	11605598	50 mile

Job Hours

Date	On Location Hours	Operating Hours	Date	On Location Hours	Operating Hours	Date	On Location Hours	Operating Hours
07/16/11	4.5	3						

TOTAL Total is the sum of each column separately

Job

Job Times

Formation Name	Formation Depth (MD)	Top	Bottom	Called Out	Date	Time	Time Zone
Form Type	Job depth MD	450. ft	Job Depth TVD	450. ft	Job Started	16 - Jul - 2011	07:09
Water Depth	Perforation Depth (MD)	From	To	Job Completed	16 - Jul - 2011	09:49	MST
				Departed Loc	16 - Jul - 2011	11:00	MST

Well Data

Description	New / Used	Max pressure psig	Size in	ID in	Weight lbf/ft	Thread	Grade	Top MD ft	Bottom MD ft	Top TVD ft	Bottom TVD ft
17 1/2" Openhole				11.					43.		
13 3/8" Conductor Casing	Unknown		13.375	12.715	54.5#				43.		

Tools and Accessories

Type	Size	Qty	Make	Depth	Type	Size	Qty	Make	Depth	Type	Size	Qty	Make
Guide Shoe					Packer					Top Plug			
Float Shoe					Bridge Plug					Bottom Plug			
Float Collar					Retainer					SSR plug set			
Insert Float										Plug Container			
Stage Tool										Centralizers			

Miscellaneous Materials

Gelling Agt	Conc	Surfactant	Conc	Acid Type	Qty	Conc %
Treatment Fld	Conc	Inhibitor	Conc	Sand Type	Size	Qty

Fluid Data

Stage/Plug #: 1									
Fluid #	Stage Type	Fluid Name	Qty	Qty uom	Mixing Density lbf/gal	Yield ft ³ /sk	Mix Fluid Gal/sk	Rate bbl/min	Total Mix Fluid Gal/sk

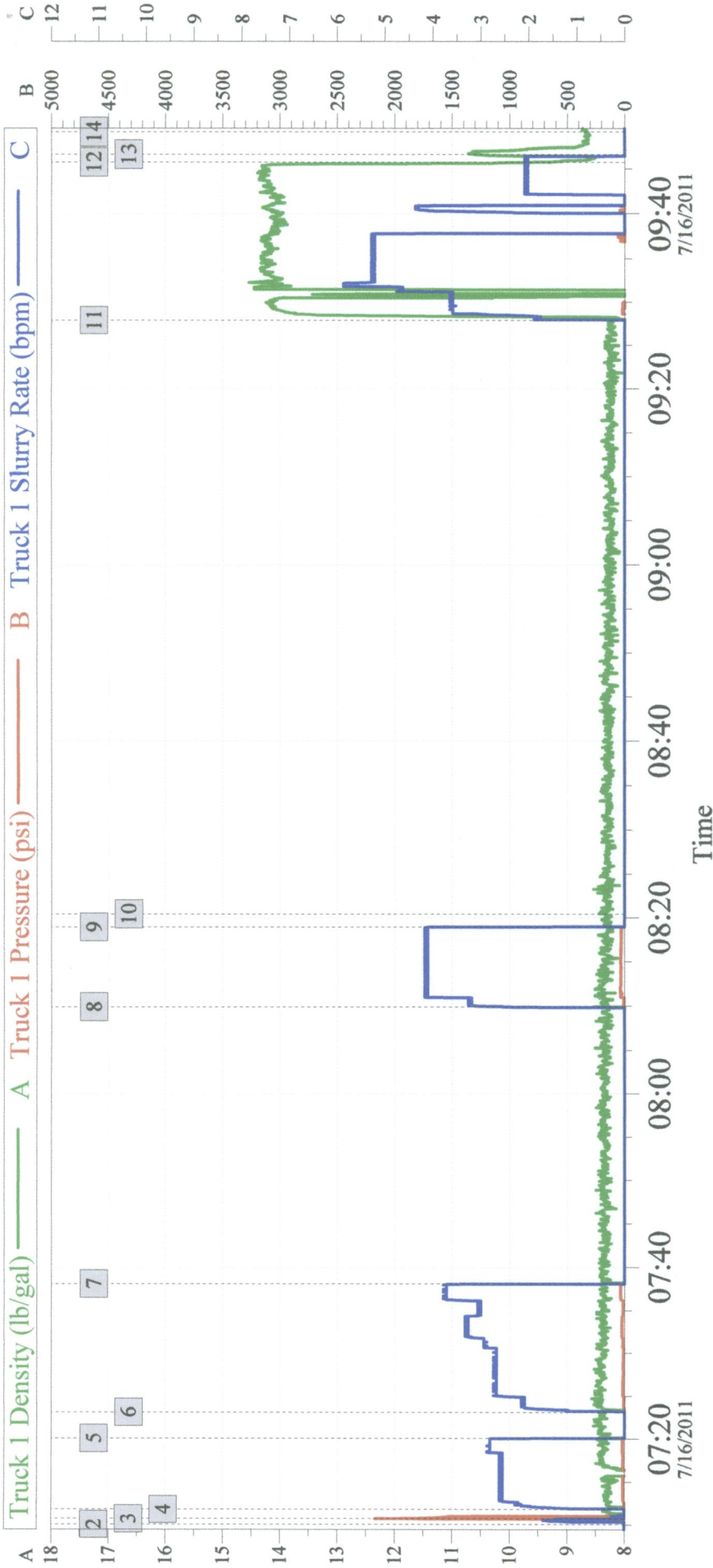
Stage/Plug #: 1									
Fluid #	Stage Type	Fluid Name	Qty	Qty uom	Mixing Density lbm/gal	Yield ft ³ /sk	Mix Fluid Gal/sk	Rate bbl/min	Total Mix Fluid Gal/sk
1	FRESH WATER			bbl	8.33	.0	.0	.0	
2	Trinidad Surface Blend	TRINIDAD SURFACE BLEND - SBM (137081)	170.0	sacks	14.	1.66	7.76	4.0	7.76
	0.125 lbm	POLY-E-FLAKE (101216940)							
	2 %	CAL-SEAL 60, 50 LB BAG (101217146)							
	2 %	ECONOLITE (100001580)							
	5 lbm	GILSONITE, 50 LB BAG (100001618)							
	0.2 %	VERSASET, 55 LB SK (101376573)							
	6 %	SALT, 100 LB BAG (100003652)							
	7.76 Gal	FRESH WATER							
3	DISPLACEMENT			bbl	8.33	.0	.0	.0	
Calculated Values		Pressures			Volumes				
Displacement		Shut In: Instant		Lost Returns		Cement Slurry	50	Pad	
Top Of Cement	SURFACE	5 Min		Cement Returns		Actual Displacement		Treatment	
Frac Gradient		15 Min		Spacers		Load and Breakdown		Total Job	
Rates									
Circulating		Mixing		Displacement		Avg. Job			
Cement Left In Pipe	Amount	0 ft	Reason	Shoe Joint					
Frac Ring # 1 @	ID	Frac ring # 2 @	ID	Frac Ring # 3 @	ID	Frac Ring # 4 @	ID		
The Information Stated Herein Is Correct				Customer Representative Signature					

The Road to Excellence Starts with Safety

Sold To #: 353810	Ship To #: 2866176	Quote #:	Sales Order #: 8324691
Customer: XTO ENERGY INC EBUSINESS		Customer Rep:	
Well Name: Apache Canyon	Well #: 09-04	API/UWI #:	
Field:	City (SAP): TRINIDAD	County/Parish: Las Animas	State: Colorado
Legal Description:			
Lat:		Long:	
Contractor: Pense Drilling		Rig/Platform Name/Num: 19	
Job Purpose: Cement Conductor Casing			Ticket Amount:
Well Type: Development Well		Job Type: Cement Conductor Casing	
Sales Person: FLING, MATTHEW		Srcv Supervisor: ROSALES, MATTHEW MBU ID Emp #: 392095	

Activity Description	Date/Time	Cht #	Rate bbl/min	Volume bbl		Pressure psig		Comments
				Stage	Total	Tubing	Casing	
Start Job	07/16/2011 07:10							
Test Lines	07/16/2011 07:10		0.5	0.5			1000.0	
Circulate Well	07/16/2011 07:11		3	20			.0	WATER
Pump Spacer 1	07/16/2011 07:23		3	44	64		.0	LCM PILL
Shutdown	07/16/2011 07:38							WAIT ON MORE LCM
Pump Spacer 1	07/16/2011 08:09		3	20	84		.0	LCM PILL
Shutdown	07/16/2011 08:18							SHUTDOWN CHECK FOR FALL BACK
Other	07/16/2011 08:20							PUMP PIT WATER OFF OF VACUUME TRUCK DOWN ANNULAS
Pump Cement	07/16/2011 09:27		5	50	134		.0	170SKS MIXED WITH WATER PROVIDED BY RIG
Pump Displacement	07/16/2011 09:45		3	2	136		.0	FRESH WATER
Shut In Well	07/16/2011 09:46						.0	
End Job	07/16/2011 09:49							

XTO - APACHE CANYON 09-04
CONDUCTOR



Global Event Log

2	Start Job	07:10:04	3	Test Lines	07:10:43
4	Water Spacer	07:11:49	5	Shutdown Mix LCM Pill	07:20:05
6	LCM Pill	07:23:07	7	Shutdown Wait on More LCM	07:38:08
8	Resume Pumping LCM	08:09:56	9	Shutdown Watch for Back	08:18:57
10	Pump Pit Water Down Annulus off Water Truck	08:20:26	11	Pump Lead Cement	09:27:53
12	Pump Displacement	09:45:44	13	Other	09:46:36
14	End Job	09:49:04			

Customer:
Well Description:

Job Date: 16-Jul-2011
UWI:

Sales Order #: 8324691