

SCALE: 1" = 50'

DATE: 05-31-11

DRAWN BY: D.R.B.

Revised: 07-12-11 D.R.B.

Revised: 07-19-11 D.R.B.

Revised: 07-27-11 D.R.B.

Revised: 08-10-11 D.R.B.



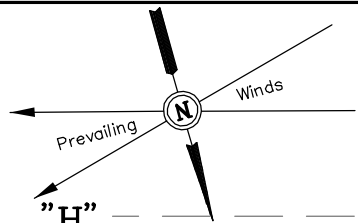
Potential Tank Area
365'x165'

NOTE:
Use Extreme Caution When
Constructing Road Over or
Near Pipeline.

FRAC PIT

Total Pit Capacity
W/2' of Freeboard
= 46,840 Bbls. ±
Total Pit Volume
= 12,080 Cu. Yds.

SURFACE USE OF LOCATION IS
GRAZING. VEGETATION CONSISTS
MAINLY OF SAGEBRUSH &
NATIVE GRASSES.



SCALE: 1" = 50'
DATE: 08-10-10
DRAWN BY: D.R.B.
Rev: 10-26-10 D.R.B.
Rev: 05-31-11 D.R.B.
Rev: 07-12-11 D.R.B.
Rev: 07-19-11 D.R.B.
Rev: 07-27-11 D.R.B.
Rev: 08-10-11 D.R.B.

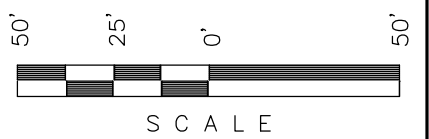
Encana OIL & GAS (USA) INC.

CONSTRUCTION LAYOUT FOR

WELL PAD L27 496

SECTION 27, T4S, R96W, 6th P.M.

NW 1/4 SW 1/4



"H"
Sheet 3 of 11



0.04 Ac. to Sed. Res. #6
3,600 cu.ft./Ac. Drainage
Vol. = 144 cu.ft.
L= 18', W=5', D=4'

NOTE:
Use Extreme Caution When
Constructing Road Over or
Near Pipeline.

0.04 Ac. to Sed. Res. #1
3,600 cu.ft./Ac. Drainage
Vol. = 144 cu.ft.
L= 18', W=5', D=4'

0.66 Ac. to Sed. Res. #2
3,600 cu.ft./Ac. Drainage
Vol. = 2,376 cu.ft.
L= 74', W=20', D=4'

0.12 Ac. to Sed. Res. #3
3,600 cu.ft./Ac. Drainage
Vol. = 432 cu.ft.
L= 27', W=10', D=4'

NOTE:
Wattle to be installed
25' downhill of slash
and topsoil stockpile.

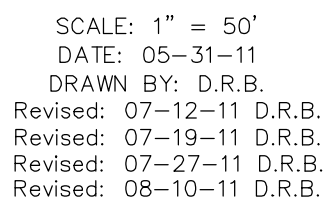
FRAC PIT
Total Pit Capacity
W/2' of Freeboard
= 46,840 Bbls. ±
Total Pit Volume
= 12,080 Cu. Yds.

NOTE:
Flare Pit is to
be located a min.
of 100' from the
Well Head.

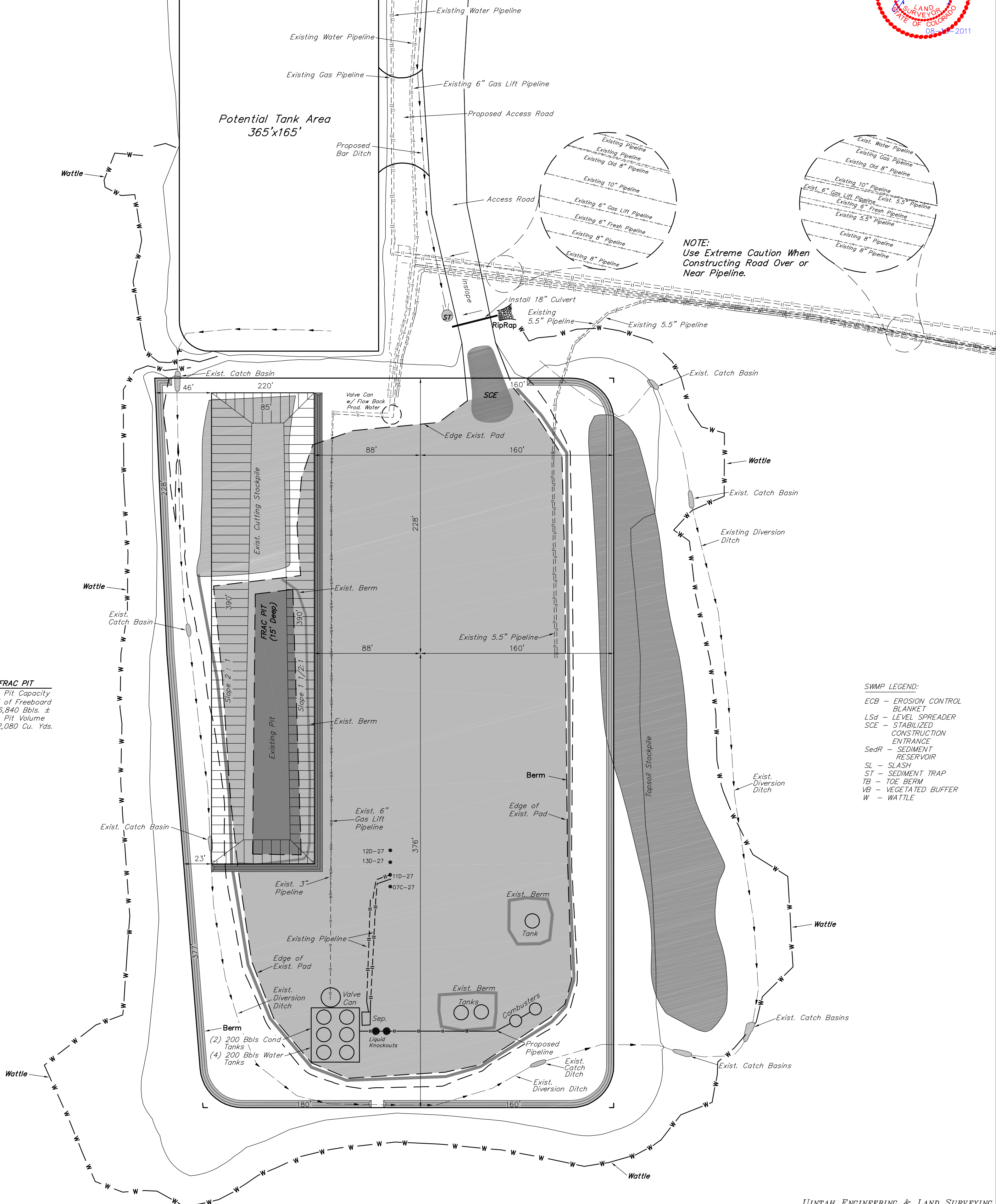
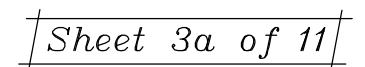
SWMP LEGEND:
ECB - EROSION CONTROL
BLANKET
LSd - LEVEL SPREADER
SCE - STABILIZED
CONSTRUCTION
ENTRANCE
SedR - SEDIMENT
RESERVOIR
SL - SLASH
ST - SEDIMENT TRAP
TB - TOE BERM
VB - VEGETATED BUFFER
W - WATTLE

FINISHED GRADE ELEV. FOR CUTTINGS AREA = 8112.0'
FINISHED GRADE ELEV. AT POD 2D LOC. STAKE = 8104.8'

UNTAH ENGINEERING & LAND SURVEYING
85 So. 200 East * Vernal, Utah 84078 * (435) 789-1017



WELL PAD L27 496
SECTION 27, T4S, R96W, 6th P.M.
NW 1/4 SW 1/4



ECB - EROSION CONTROL
BLANKET
LSd - LEVEL SPREADER
SCE - STABILIZED
CONSTRUCTION
ENTRANCE
SedR - SEDIMENT
RESERVOIR
SL - SLASH
ST - SEDIMENT TRAP
TB - TOE BERM
VB - VEGETATED BUFFER
W - WATTLE

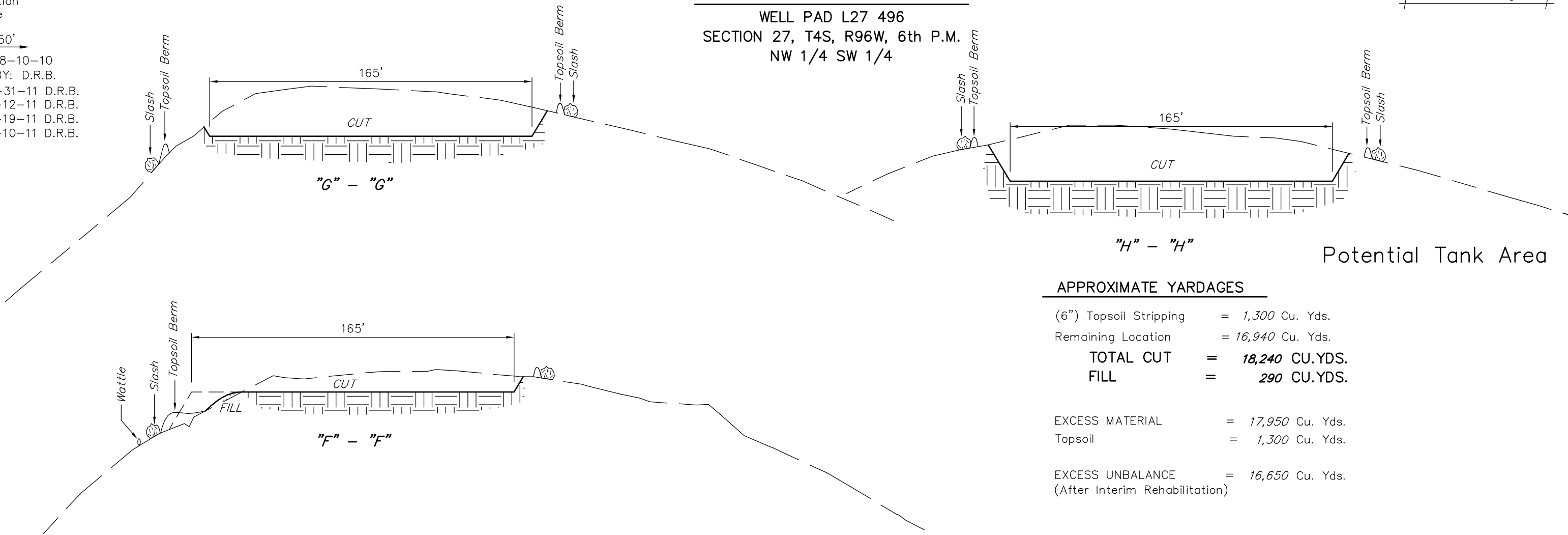
Encana OIL & GAS (USA) INC.
CONSTRUCTION LAYOUT CROSS SECTION FOR

WELL PAD L27 496
SECTION 27, T4S, R96W, 6th P.M.
NW 1/4 SW 1/4

Sheet 4 of 11

1" = 20'
X-Section
Scale
1" = 50'

DATE: 08-10-10
DRAWN BY: D.R.B.
Revised: 05-31-11 D.R.B.
Revised: 07-12-11 D.R.B.
Revised: 07-19-11 D.R.B.
Revised: 08-10-11 D.R.B.

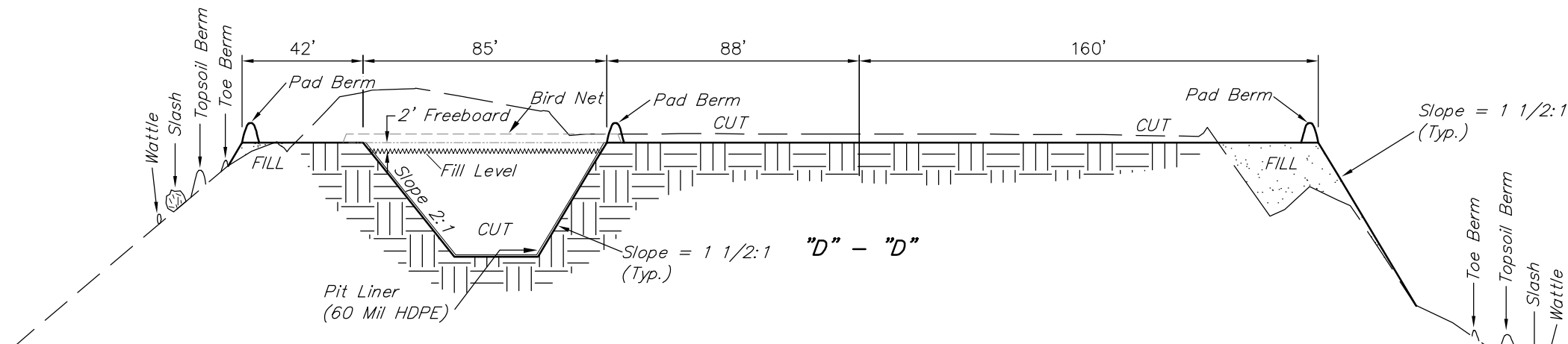
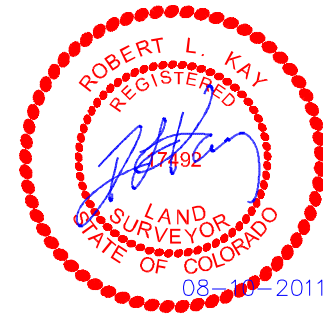
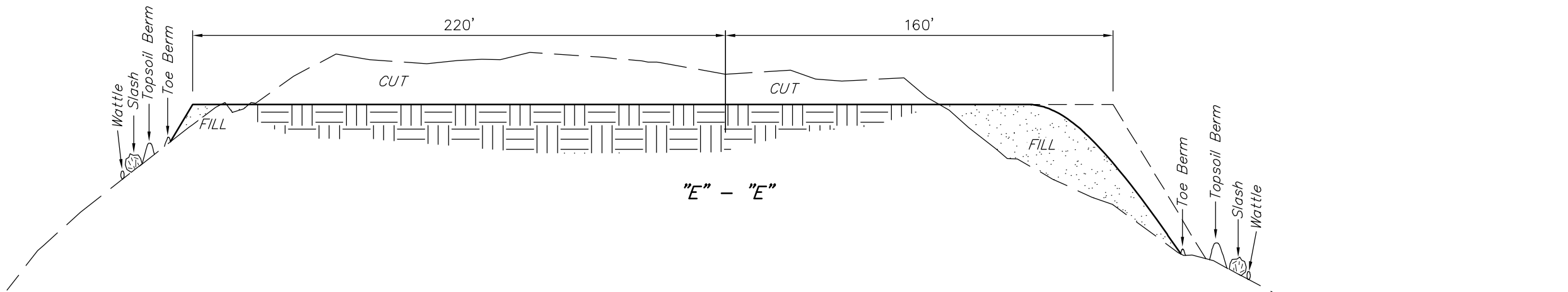


APPROXIMATE YARDAGES

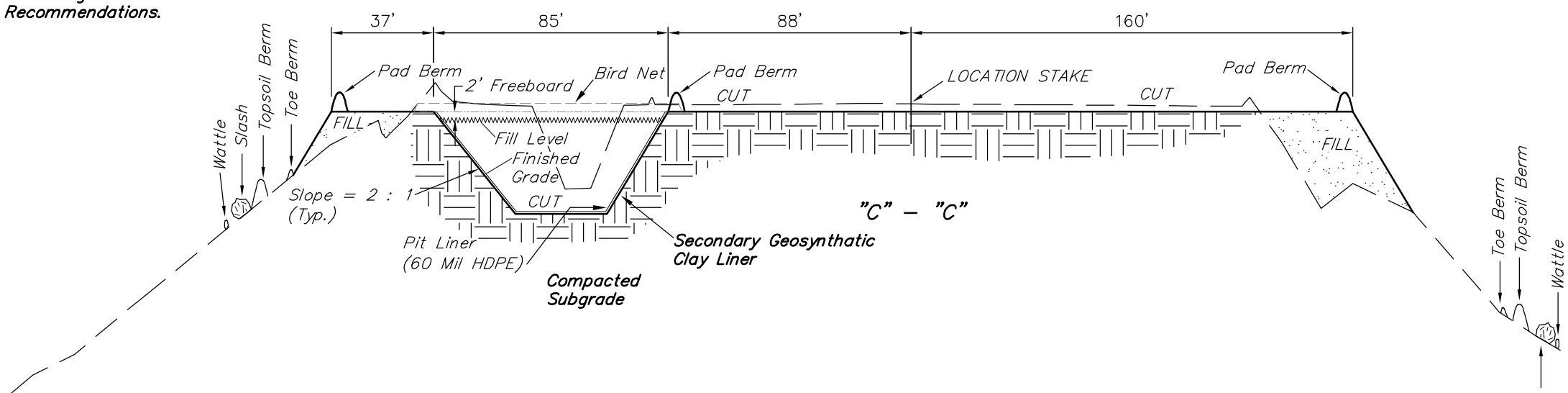
(6") Topsoil Stripping = 1,300 Cu. Yds.
Remaining Location = 16,940 Cu. Yds.
TOTAL CUT = 18,240 CU.YDS.
FILL = 290 CU.YDS.

EXCESS MATERIAL = 17,950 Cu. Yds.
Topsoil = 1,300 Cu. Yds.

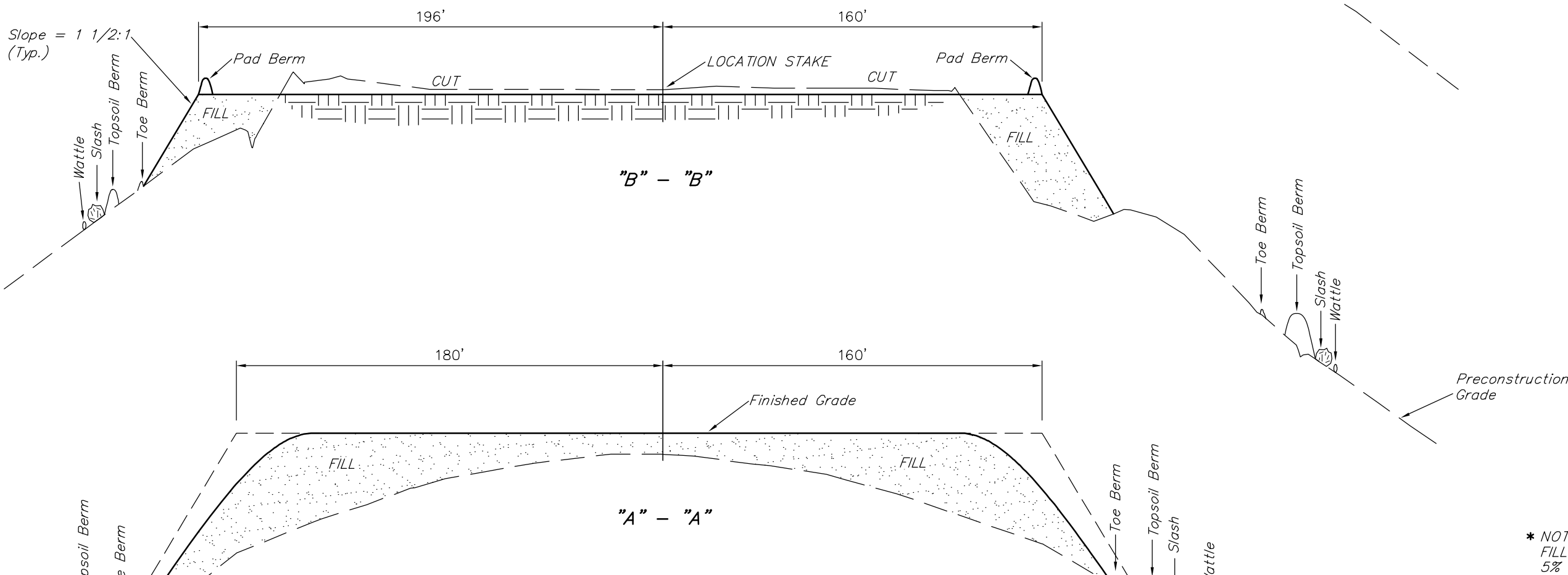
EXCESS UNBALANCE = 16,650 Cu. Yds.
(After Interim Rehabilitation)



- NOTE:**
1. Frac Pit Construction to Meet all COGCC Requirement.
 2. All Material to be Installed According to Manufacturer's Recommendations.



WELL PAD



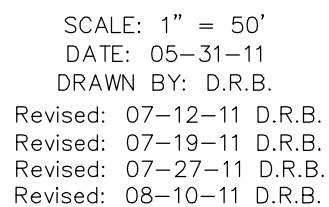
APPROXIMATE YARDAGES

(6") Topsoil Stripping = 2,270 Cu. Yds.
(New Construction Only)
Remaining Location = 20,270 Cu. Yds.
TOTAL CUT = 22,540 CU.YDS.
FILL = 24,800 CU.YDS.

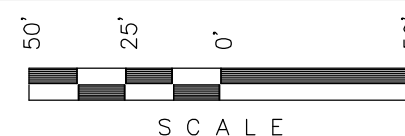
DEFICIT MATERIAL = <2,260> Cu. Yds.
Topsoil & Pit Backfill = 8,370 Cu. Yds.
(1/2 Pit Vol.)
DEFICIT UNBALANCE = <10,570> Cu. Yds.
(After Interim Rehabilitation)

* NOTE:
FILL QUANTITY INCLUDES
5% FOR COMPACTION

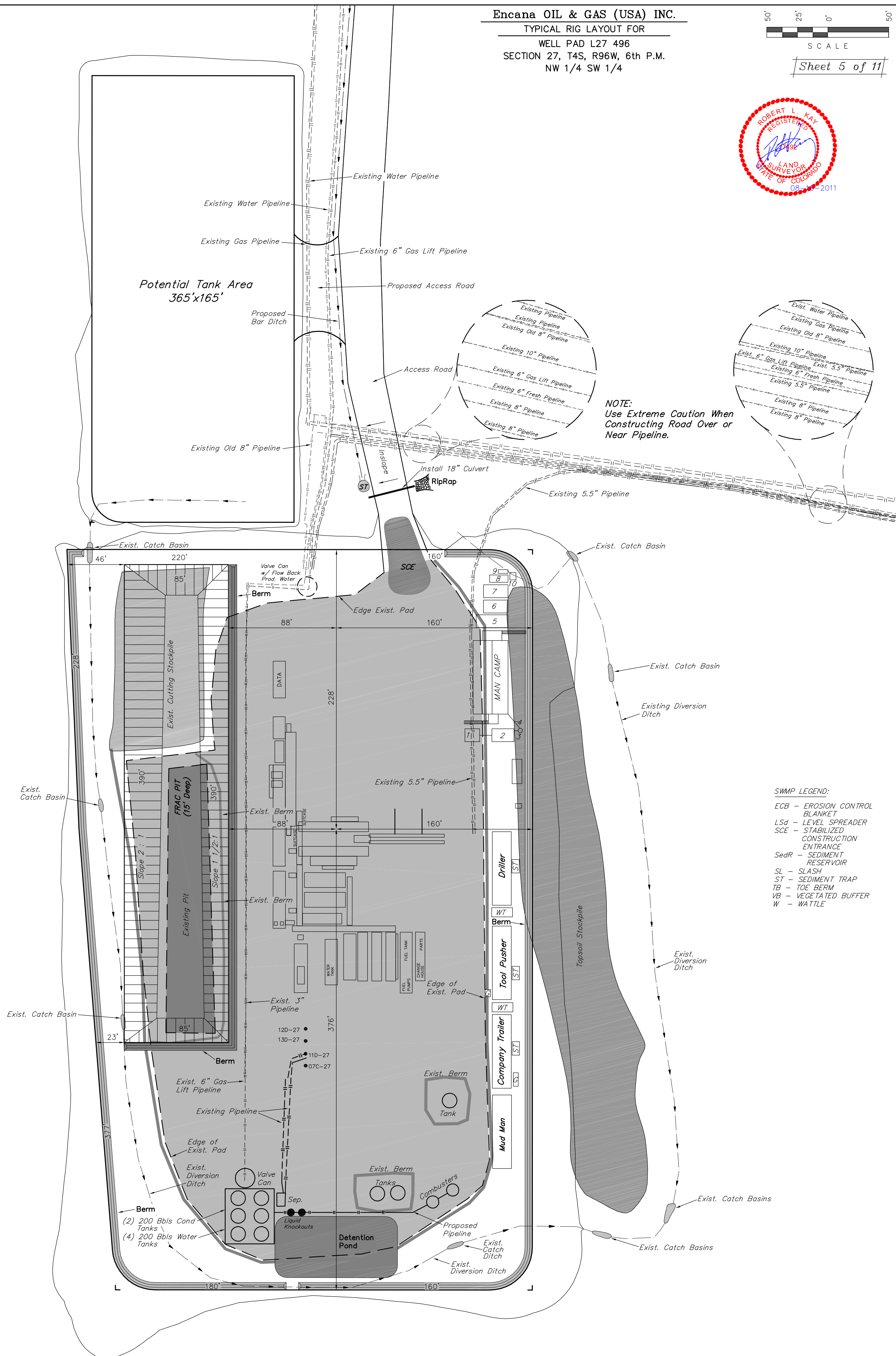
NOTE:
MATERIAL TO BE OBTAINED
FROM THE CUTTING AREA.



WELL PAD L27 496
SECTION 27, T4S, R96W, 6th P.M.
NW 1/4 SW 1/4



Sheet 5 of 12



FRAC PIT

Total Pit Capacity
W/2' of Freeboard
= 46,840 Bbls. \pm
Total Pit Volume
= 12,080 Cu. Yds.

SWMP LEGEND:

ECB - EROSION CONTROL
BLANKET

LSd - LEVEL SPREADER

SCE - STABILIZED
CONSTRUCTION
ENTRANCE

SedR - SEDIMENT
RESERVOIR

SL - SLASH

ST - SEDIMENT TRAP

TB - TOE BERM

VB - VEGETATED BUFFER

W - WATTLE

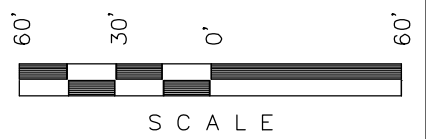
Encana OIL & GAS (USA) INC.

PRODUCTION SCHEMATIC FOR

WELL PAD L27 496

SECTION 27, T4S, R96W, 6th P.M.

NW 1/4 SW 1/4

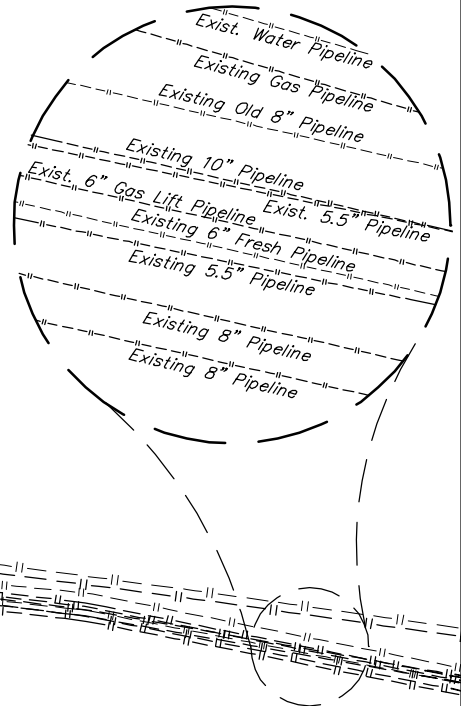
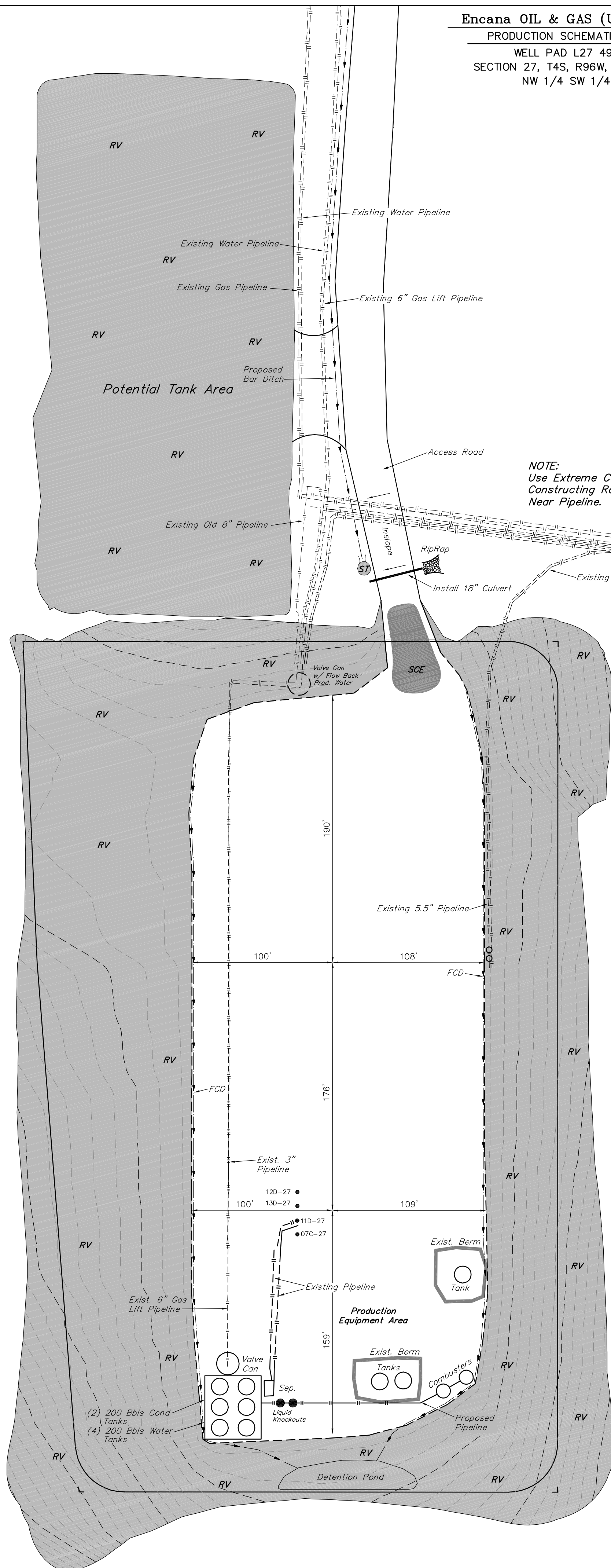


SCALE

Sheet 6 of 11



SCALE: 1" = 50'
DATE: 05-31-11
DRAWN BY: D.R.B.
Revised: 07-12-11 D.R.B.
Revised: 07-27-11 D.R.B.
Revised: 08-10-11 D.R.B.



SWMP LEGEND:
FCD - FLOW CONTROL DITCH
RV - REVEGATION
ST - SEDIMENT TRAP

APPROXIMATE ACREAGES
TOTAL RECLAIMED AREA = ± 5.071 ACRES
UN-RECLAIMED AREA = ± 2.501 ACRES

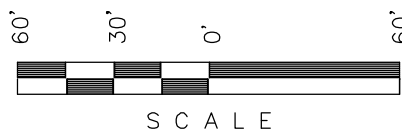
Encana OIL & GAS (USA) INC.

SURFACE DISTURBANCE AREA FOR

WELL PAD L27 496

SECTION 27, T4S, R96W, 6th P.M.

NW 1/4 SW 1/4



SCALE

Sheet 7 of 11



LINE TABLE		
LINE	BEARING	LENGTH
L1	S49°12'27"W	32.70'
L2	S29°31'29"W	32.90'
L3	S04°34'46"W	32.25'
L4	S57°00'44"E	28.19'
L5	S29°57'05"W	39.54'
L6	N68°07'29"W	29.03'
L7	S39°29'55"W	15.33'
L8	N12°56'52"W	30.78'
L9	N61°37'53"W	45.45'
L10	N23°00'25"W	41.47'
L11	N03°45'36"W	41.21'
L12	N57°56'37"W	24.75'
L13	N81°41'04"E	28.99'
L14	N09°54'30"W	29.51'
L15	N45°33'44"W	34.00'
L16	N60°00'06"E	36.95'
L17	N27°51'28"E	27.60'
L18	N57°32'09"E	41.64'
L19	N28°31'13"E	33.72'
L20	N85°12'42"E	28.59'
L21	N54°54'57"E	30.02'
L22	N80°11'17"E	35.65'
L23	S85°46'19"E	30.82'

NOTE:
Use Extreme Caution When
Constructing Road Over or
Near Pipeline.

FRAC PIT

Total Pit Capacity
W/2' of Freeboard
= 46,840 Bbls. ±
Total Pit Volume
= 12,080 Cu. Yds.

SWAMP LEGEND:

ECB - EROSION CONTROL
BLANKET
Lsd - LEVEL SPREADER
SCE - STABILIZED
CONSTRUCTION
ENTRANCE
SedR - SEDIMENT
RESERVOIR
SL - SLASH
ST - SEDIMENT TRAP
TB - TOE BERM
VB - VEGETATED BUFFER
W - WATTLE

APPROXIMATE ACREAGES

APPROX. WELL DISTURBANCE = ± 10.273 ACRES
ACCESS ROAD DISTURBANCE = ± 2.635 ACRES
TOTAL = ± 12.908 ACRES