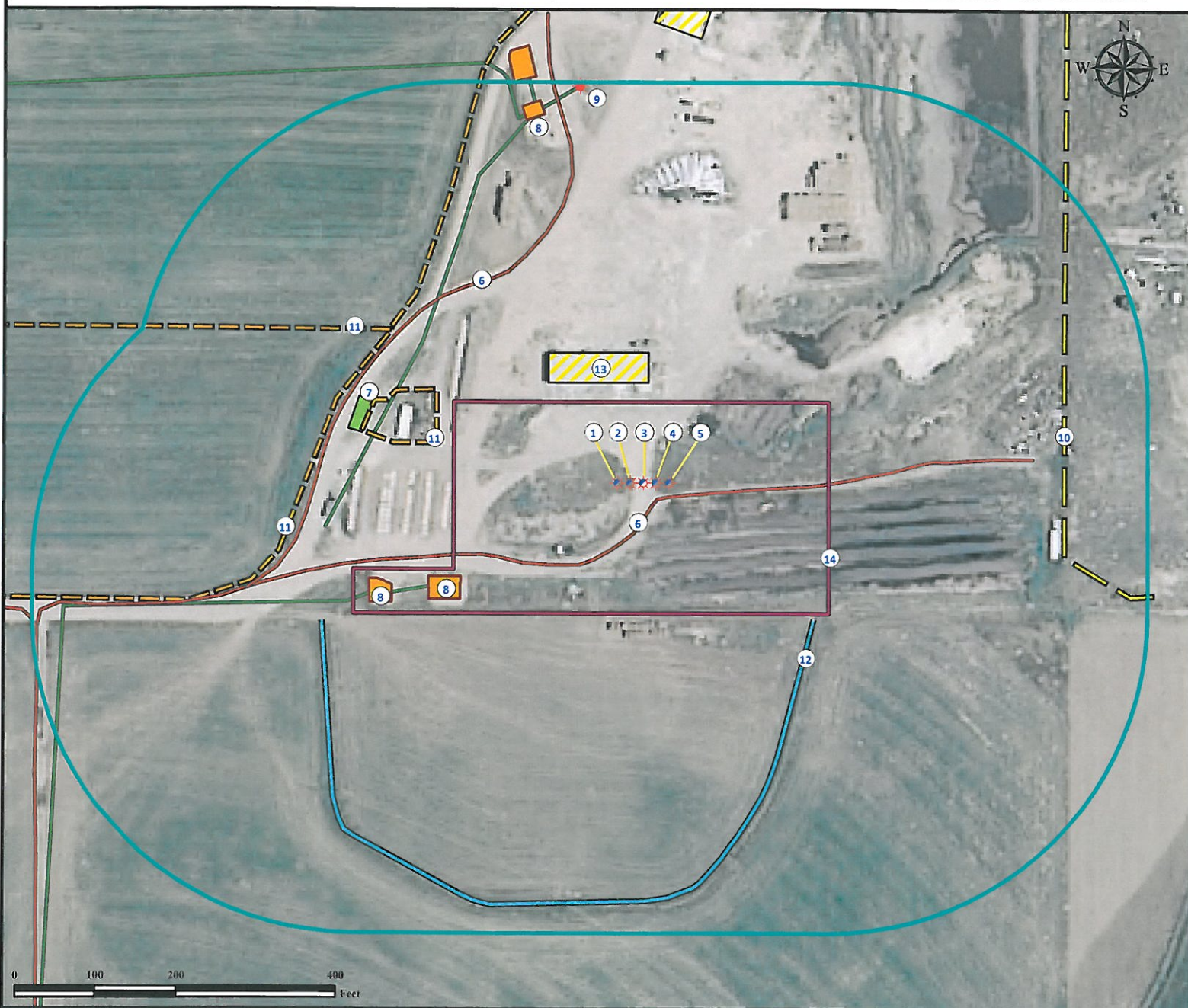


# Location Drawing CHECKETTS 18-15

## Multi Well Pad

SE¼ NW¼ SECTION 15, TOWNSHIP 4 NORTH, RANGE 65 WEST OF THE 6TH PRINCIPAL MERIDIAN



1. Proposed well CHECKETTS 32-15.
2. Proposed well CHECKETTS 22-15.
3. Proposed well CHECKETTS 18-15.
4. Proposed well CHECKETTS 21-15.
5. Proposed well CHECKETTS 25-15.
6. Private roads are ±27' SE and ±313' NW.

7. Outbuilding is ±360' NW.
8. Facilities are ±259' SW, ±345' SW and ±475' NW.
9. Existing well SWINNEY 1-15 is ±500' NW.
10. Overhead power lines are ±527' E.
11. Fences are ±264' NW, ±429' W and ±368' NW.

12. Ditch is ±272' SE.
13. Grain Storage is ±123' N.
14. Operational Disturbance Area.

### Legend

- |  |               |  |                  |  |                      |
|--|---------------|--|------------------|--|----------------------|
|  | Proposed Well |  | Outbuilding      |  | Facilities Enclosure |
|  | Existing Well |  | Disturbance Area |  | Private Road         |
|  | Fence         |  | 400' Radius      |  | Underground Pipeline |
|  | Grain Storage |  | Ditch            |  | Overhead Power Lines |

### Reference Location

\*\* All Measurements are Made from  
Reference Well CHECKETTS 18-15 \*\*  
Lat: 40.312861° Long: -104.651040° (NAD83)  
Elevation: 4727 Feet

Surface Use: Dryland Pasture



Use our resources to find yours!  
[www.petro-fs.com](http://www.petro-fs.com)  
(303) 928-7128

Field Date: 12/06/2010  
Drafting Date: 1/13/2011  
Drafter: DMM  
Checked By: BHF

Data Sources:  
- Aerial courtesy of NAIP (2009)

Prepared for: **Anadarko**  
Petroleum Corporation  
KERR-MCGEE OIL & GAS ONSHORE LP