

Company	Pioneer Natural Resources		
Well	Pete O Federal 14-18		
Field	Purgatorie River		
County	Las Animas	State	Colorado
Location:	API #: 05 071 09483 00		Other Services
	693' FSL & 1036' FWL		
Permanent Datum	SEC 18	TWP 33S	RGE 65W
Log Measured From	GL	KB 9'	AGL
Drilling Measured From	KB		
Elevation			7014'
K.B.			7023'
D.F.			7014'
G.L.			7014'

Date	6-9-11		
Run Number	one		
Depth Driller	1569'		
Depth Logger	1533'		
Bottom Logged Interval	1531'		
Top Log Interval	Surface		
Open Hole Size	7 7/8		
Type Fluid	water		
Density / Viscosity	///		
Max. Recorded Temp.	81 DEG F @ 264'		
Estimated Cement Top	63'		
Time Well Ready	ROA		
Time Logger on Bottom	1:45 P.M.		
Equipment Number	T590		
Location	Trinidad		
Recorded By	C. Sisneros		
Witnessed By	D. Martinez		

Borehole Record		Tubing Record					
Run Number	Bit	From	To	Size	Weight	From	To

Casing Record	Size	Wgt/Ft	Top	Bottom
Surface String	8 5/8"			264'
Prot. String				
Production String	5 1/5"			TD
Liner				

<<< Fold Here >>>

All interpretations are opinions based on inferences from electrical or other measurements and we cannot and do not guarantee the accuracy or correctness of any interpretation, and we shall not, except in the case of gross or willful negligence on our part, be liable or responsible for any loss, costs, damages, or expenses incurred or sustained by anyone resulting from any interpretation made by any of our officers, agents or employees. These interpretations are also subject to our general terms and conditions set out in our current Price Schedule.

Comments

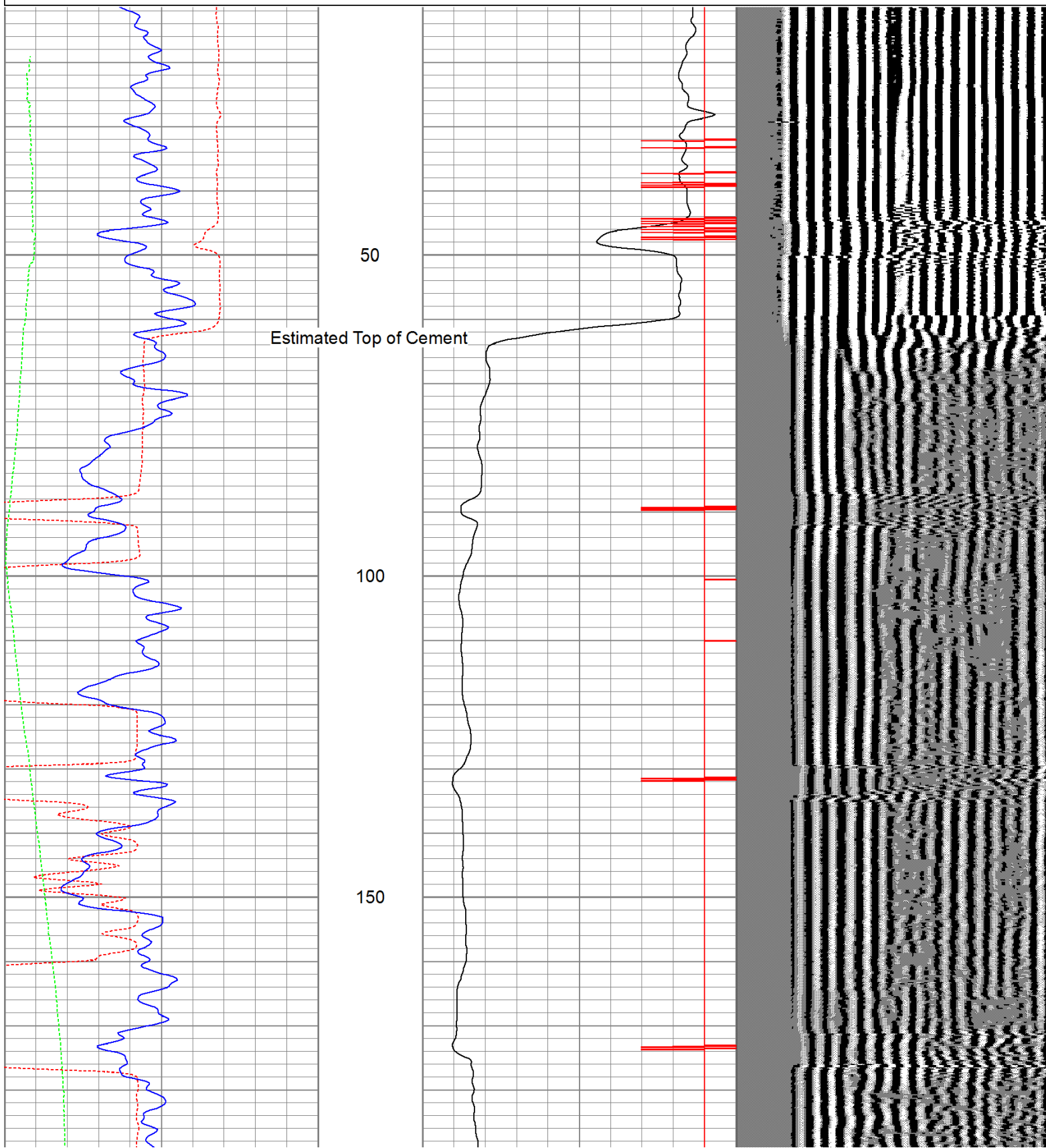
Main Pass ran under 1000 PSI.
 Directions:
 Burro Canyon, after leaving pavement take fourth left thru gate, drive past a location, first right up hill, third left , first right down hill , first right to location.

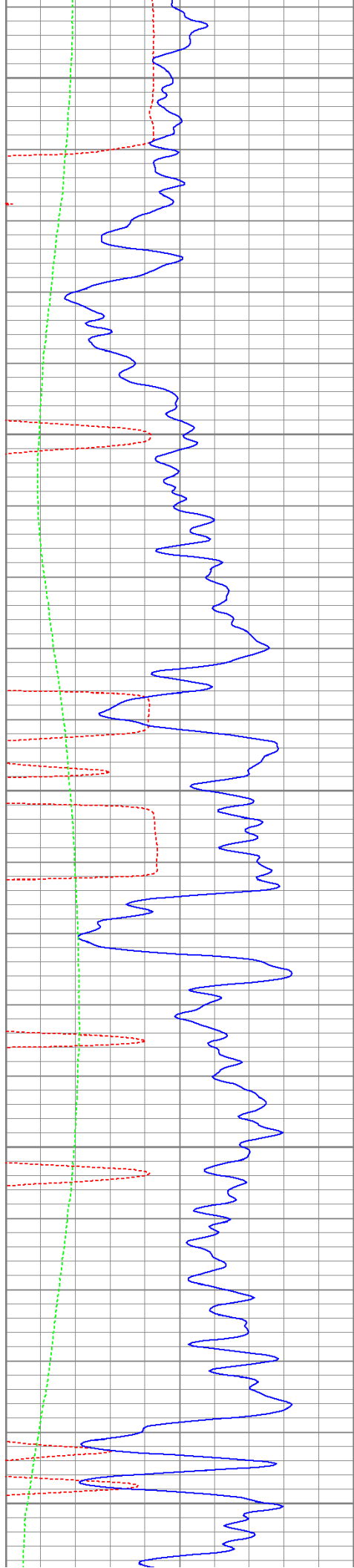
Database File: peteofederal6911b.db
 Dataset Pathname: pass2.1
 Presentation Format: cbldig
 Dataset Creation: Thu Jun 09 15:03:05 2011 by Calc Open-Cased 110302
 Charted by: Depth in Feet scaled 1:240

400	Travel Time (usec)	200
0	GR (GAPI)	200
0	DEVI (°)	10

0	Amplitude (mV)	100
9	Collar Locator	-1

200 Variable Density 1200





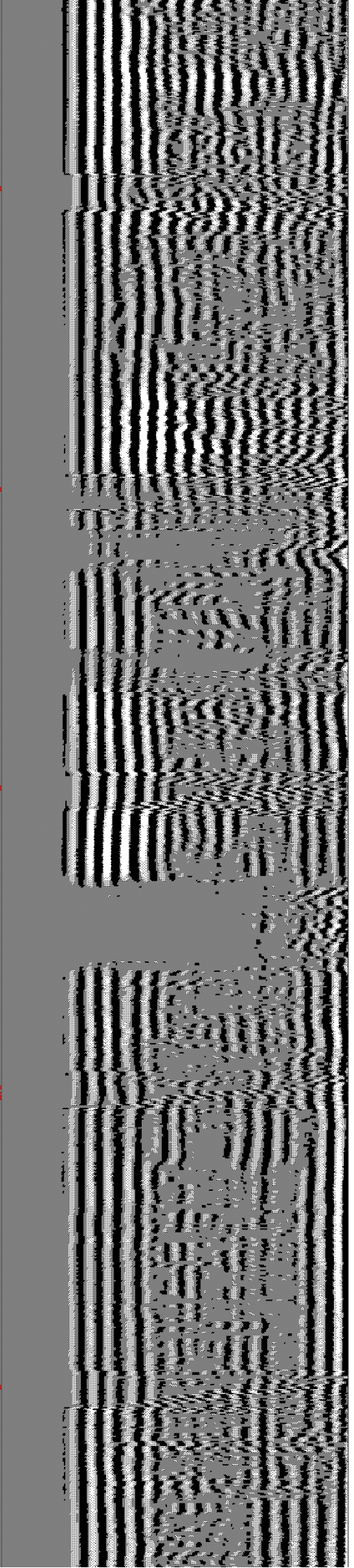
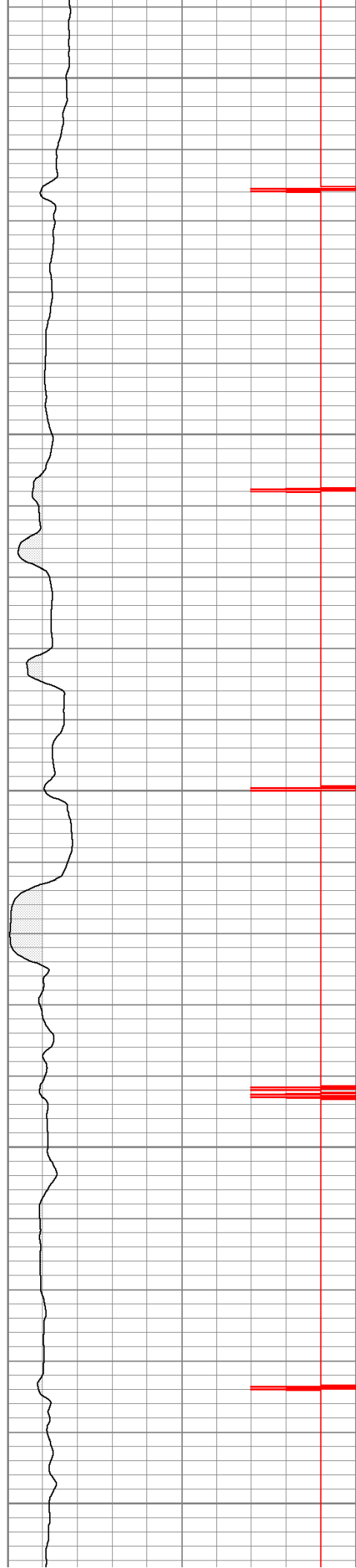
200

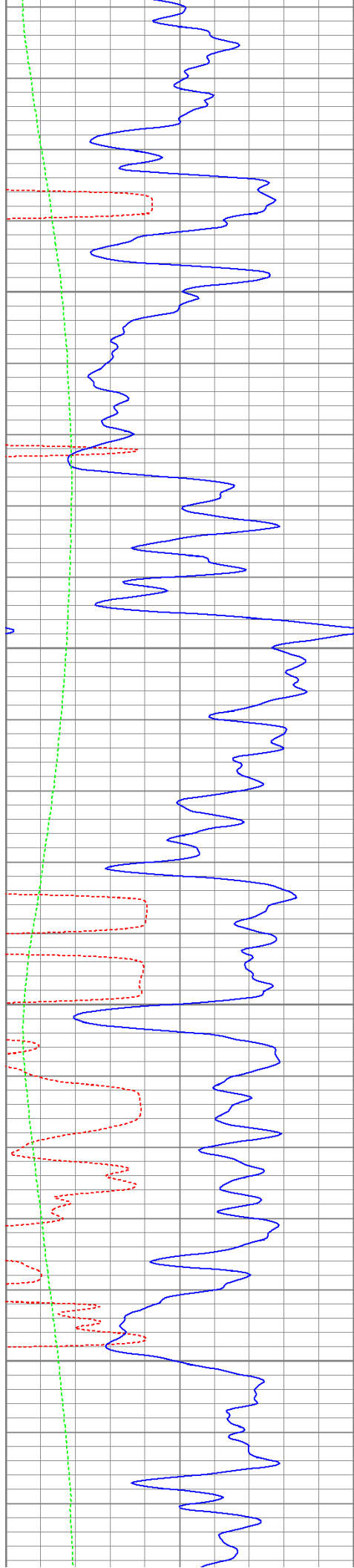
250

300

350

400



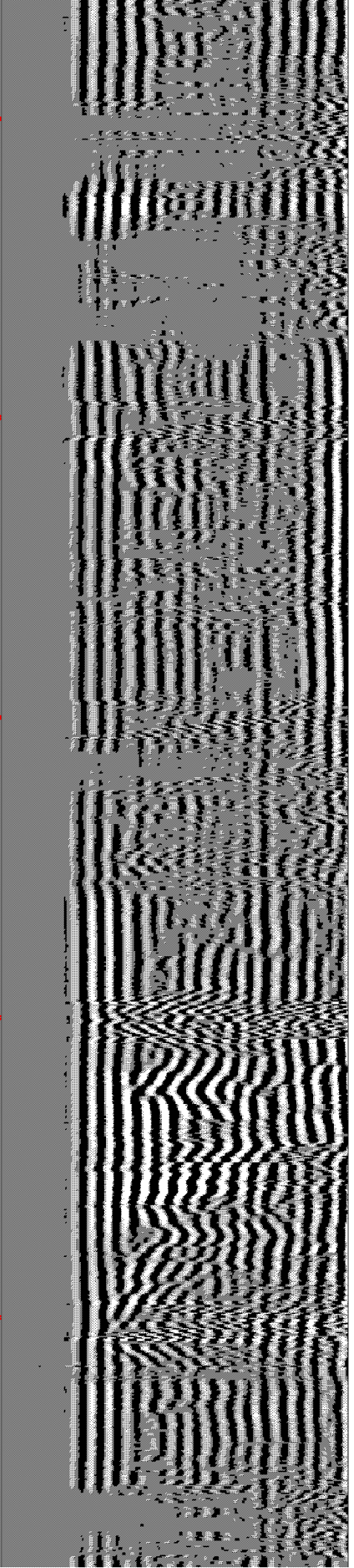
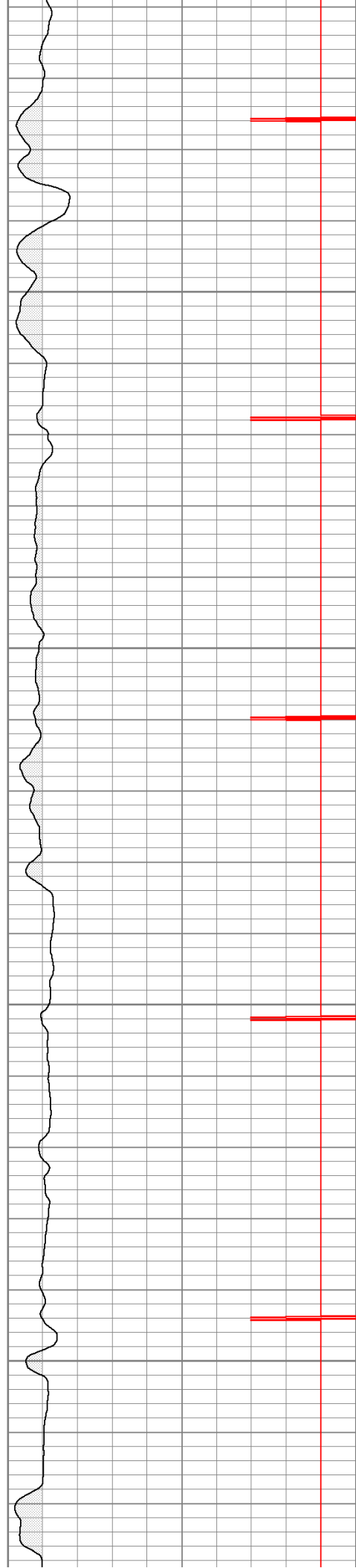


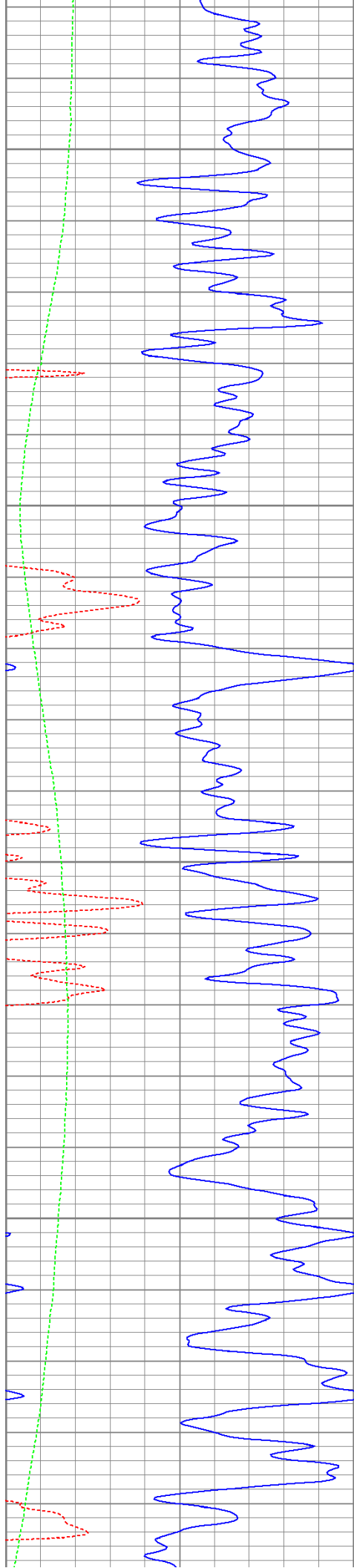
450

500

550

600



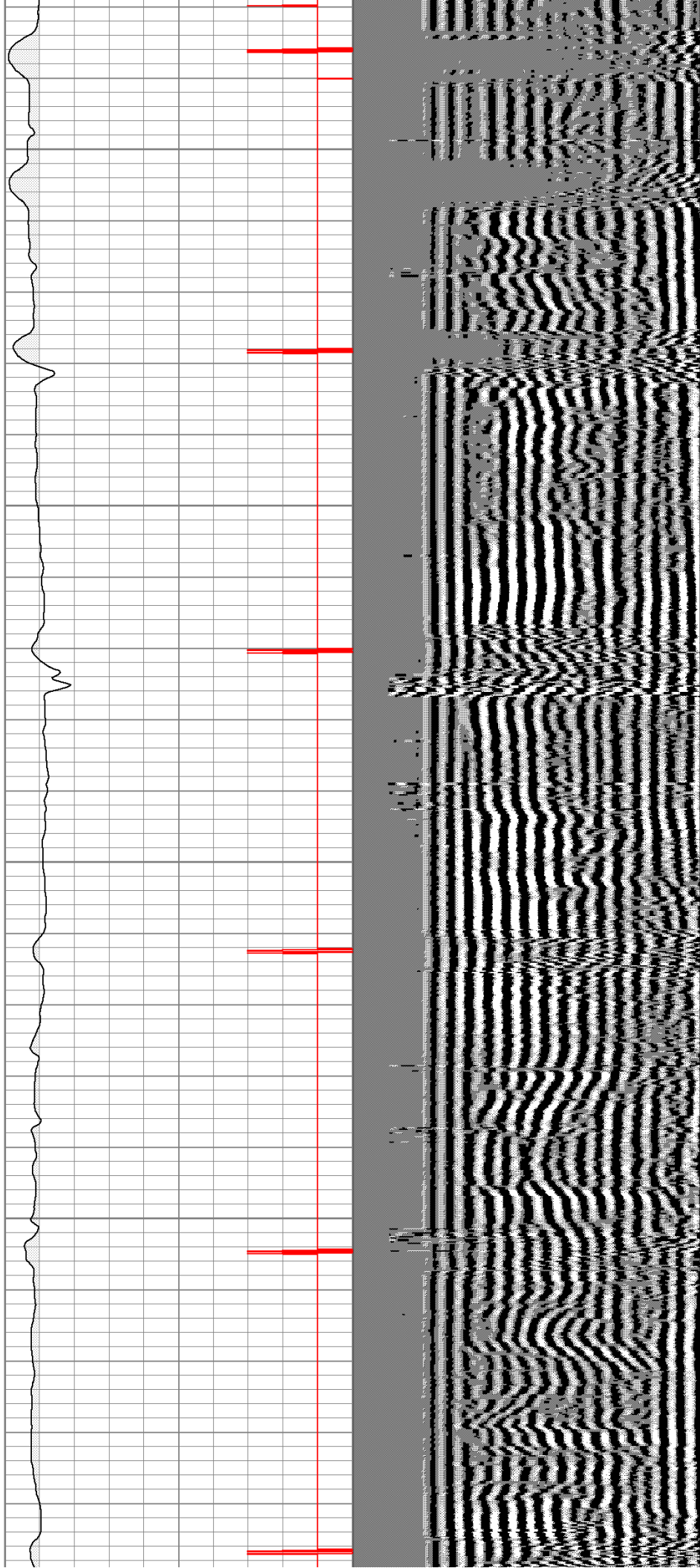


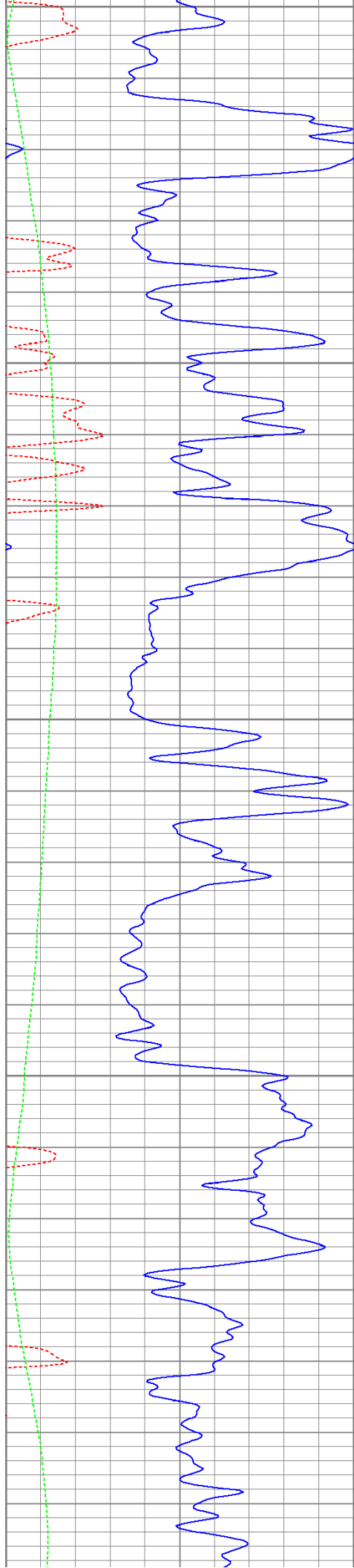
650

700

750

800





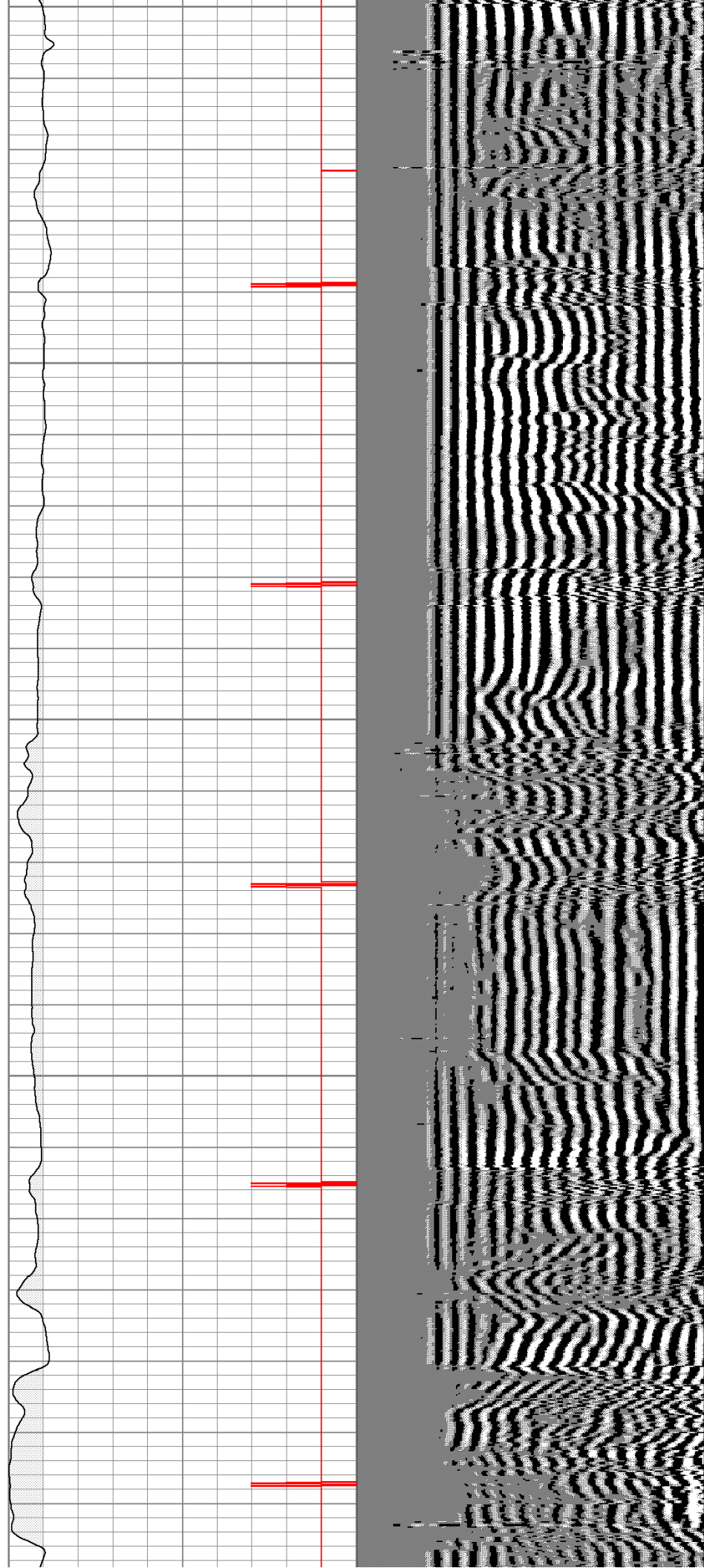
850

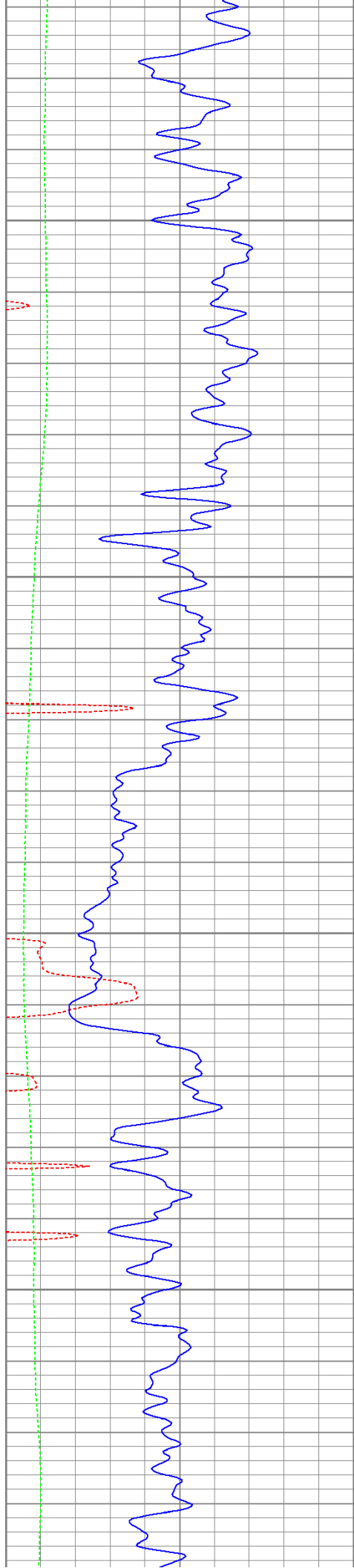
900

950

1000

1050



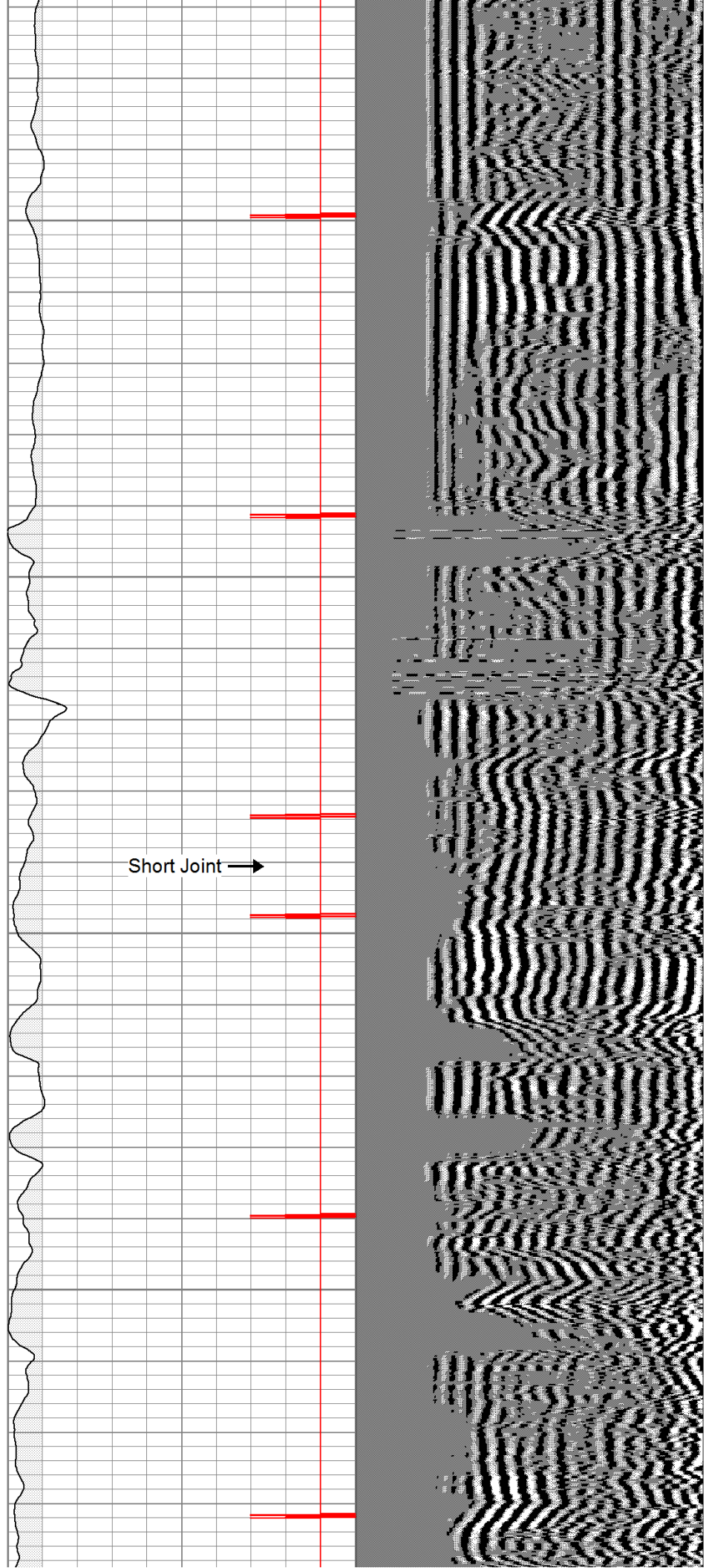


1100

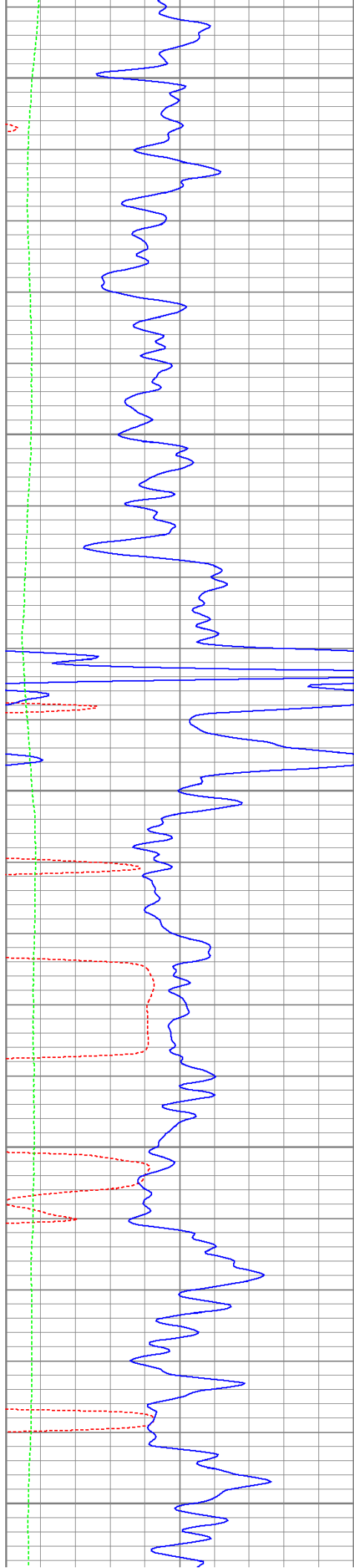
1150

1200

1250



Short Joint →



1300

1350

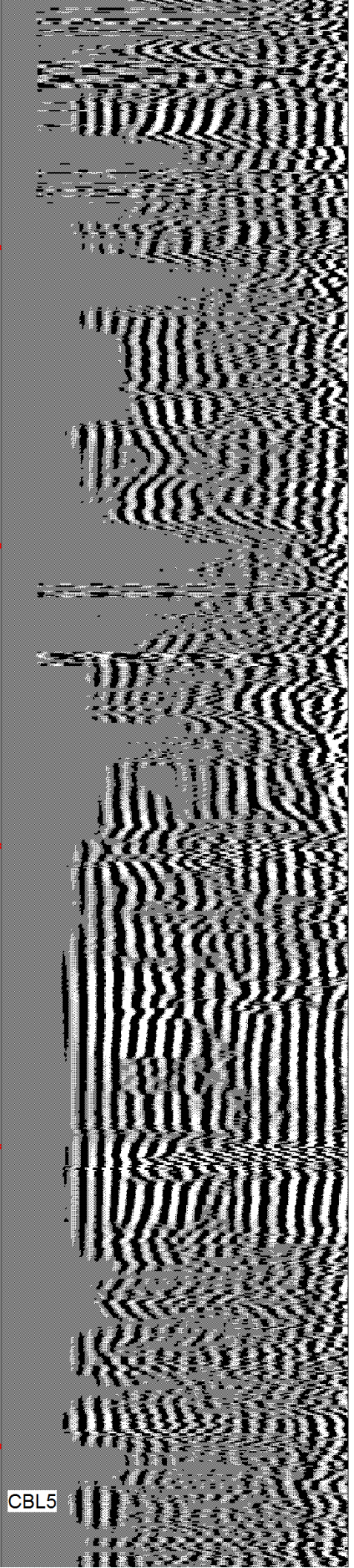
1400

1450

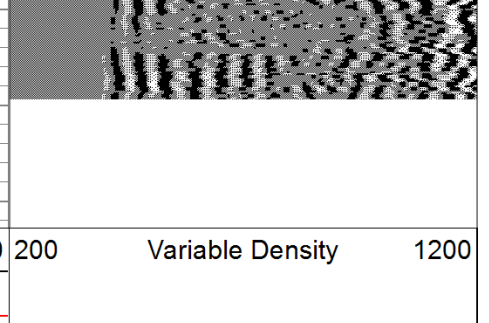
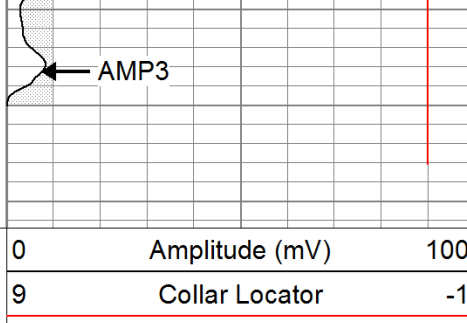
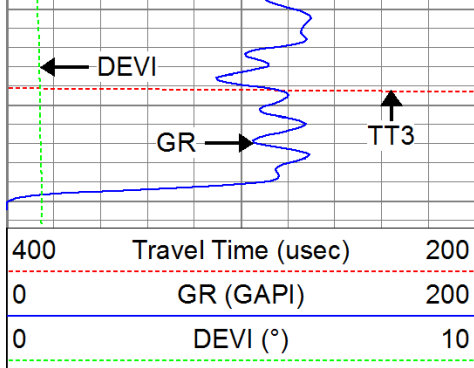
1500



↑
CCL

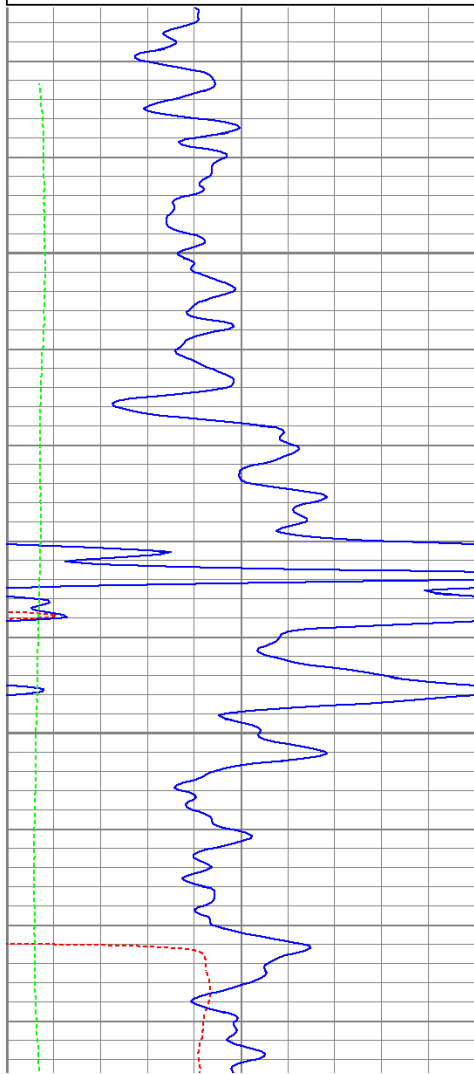
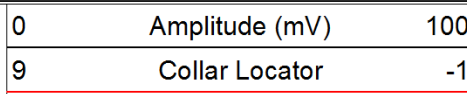
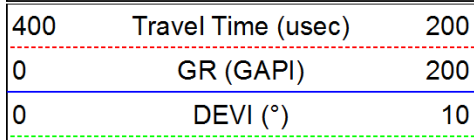


CBL5



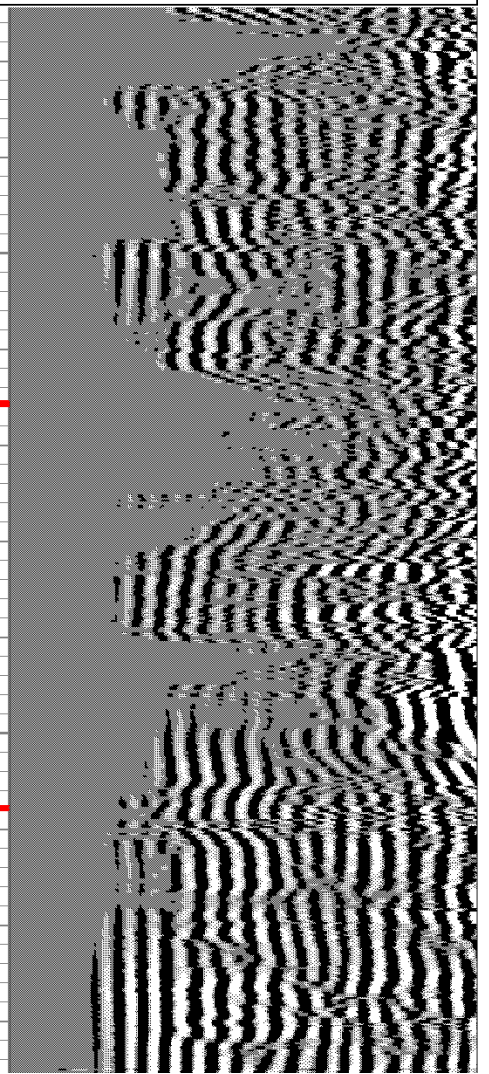
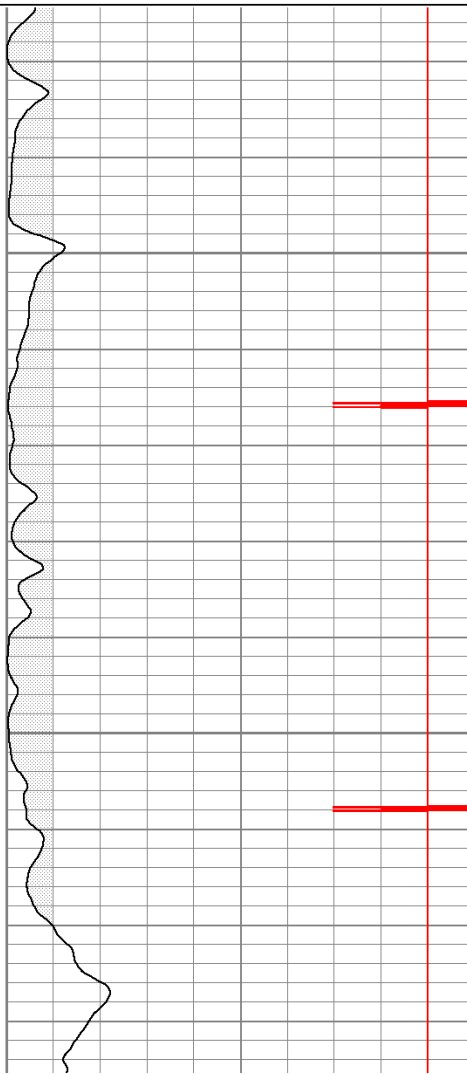
Repeat Pass

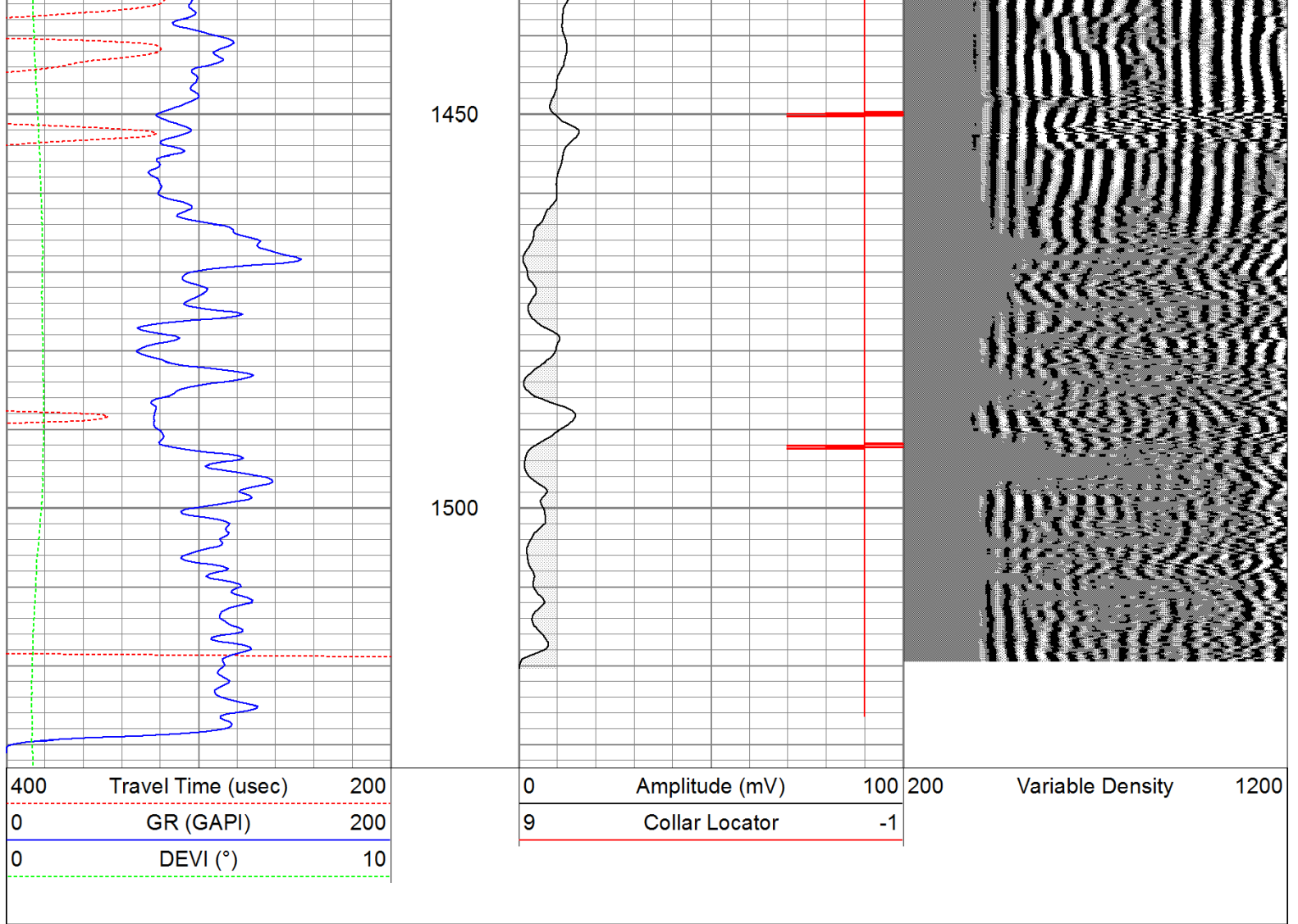
Database File: peteofederal6911b.db
 Dataset Pathname: pass1.1
 Presentation Format: cbldig
 Dataset Creation: Thu Jun 09 15:04:50 2011 by Calc Open-Case 110302
 Charted by: Depth in Feet scaled 1:240



1350

1400





Calibration Report

Database File: peteofederal6911b.db
 Dataset Pathname: pass1
 Dataset Creation: Thu Jun 09 14:13:05 2011 by Log Open-Cased 110302

Gamma Ray Calibration Report

Serial Number: 080616
 Tool Model: 275D_INC
 Performed: Wed May 04 17:31:09 2011

Calibrator Value: 200.0 GAPI

Background Reading: 50.0 cps
 Calibrator Reading: 250.0 cps

Sensitivity: 1.0000 GAPI/cps

Inclinometer Calibration Report

Performed: Wed May 04 17:39:54 2011

	Low Read.	High Read.	Low Ref.	High Ref.	
X Accelerometer	-3585.20	3595.40	-1.00	1.00	gee
Y Accelerometer	-3619.40	3520.00	-1.00	1.00	gee

Cement Bond Log Calibration Report

Serial Number:	081024		
Tool Model:	PROBEDIGITALCBL		
Performed:	Thu Jun 02 14:11:23 2011		
Depth:	45.379	ft	
Casing Diameter:	5.5	in	
	3' Spacing	5' Spacing	
Signal Zero:	0	0	mV
Calibrated Amplitude:	85	85	mV
Reading at Signal Zero:	-0.00598145	-0.00627441	V
Reading in Free Pipe:	1.673	1.23376	V
Gain:	50.6259	68.5462	
Offset:	0.302816	0.430087	

Sensor	Offset (ft)	Schematic	Description	Len (ft)	OD (in)	Wt (lb)
			None	0.75	1.50	5.00
WVF3	14.54		CBL-PROBEDIGITALCBL (081024)	8.75	2.75	106.50
WVF5	13.54		PROBE DIGITAL CBL			
			Tekco	2.90	1.69	5.00
CCL	6.40					
ACCX	4.73		GR-275D_INC (080616)	4.50	2.75	50.00
ACCY	4.73		2-3/4" GR-CCL with Inclination			
ACCZ	4.73					
GR	3.73		Tekco	2.90	1.69	5.00

Dataset:	peteofederal6911b.db: field/well/run1/pass1
Total Length:	19.79 ft
Total Weight:	171.50 lb
O.D.	2.75 in