

Company Pioneer Natural Resources
 Well Pete O Federal 14-18
 Field Purgatoire River
 County Las Animas
 State Colorado

Company	Pioneer Natural Resources
Well	Pete O Federal 14-18
Field	Purgatoire River
County	Las Animas
State	Colorado
Location:	API #: 05 071 09483-0000 693' FSL & 1036' FWL
Permanent Datum	SEC 18 TWP 33S RGE 65W
Log Measured From	Ground Level
Drilling Measured From	Kelly Bushing 9' AGL Kelly Bushing
Elevation	7014'
Other Services	CDNL
K.B.	7023'
D.F.	-----
G.L.	7014'

Date	6-4-11
Run Number	One
Depth Driller	1569'
Depth Logger	1565'
Bottom Logged Interval	1561'
Top Log Interval	Surface Casing
Casing Driller	8 5/8" @ 264"
Casing Logger	263'
Bit Size	7 7/8"
Type Fluid in Hole	Airated Water
Density / Viscosity	///
pH / Fluid Loss	///
Source of Sample	///
Rm @ Meas. Temp	///
Rmf @ Meas. Temp	///
Rmc @ Meas. Temp	///
Source of Rmf / Rmc	///
Rm @ BHT	///
Time Circulation Stopped	5:00 P.M.
Time Logger on Bottom	8:00 P.M.
Maximum Recorded Temperature	86 DEG F
Equipment Number	T590
Location	Trinidad
Recorded By	C. Sisneros
Witnessed By	Mr. Bill Vigil

<<< Fold Here >>>

All interpretations are opinions based on inferences from electrical or other measurements and we cannot and do not guarantee the accuracy or correctness of any interpretation, and we shall not, except in the case of gross or willful negligence on our part, be liable or responsible for any loss, costs, damages, or expenses incurred or sustained by anyone resulting from any interpretation made by any of our officers, agents or employees. These interpretations are also subject to our general terms and conditions set out in our current Price Schedule.

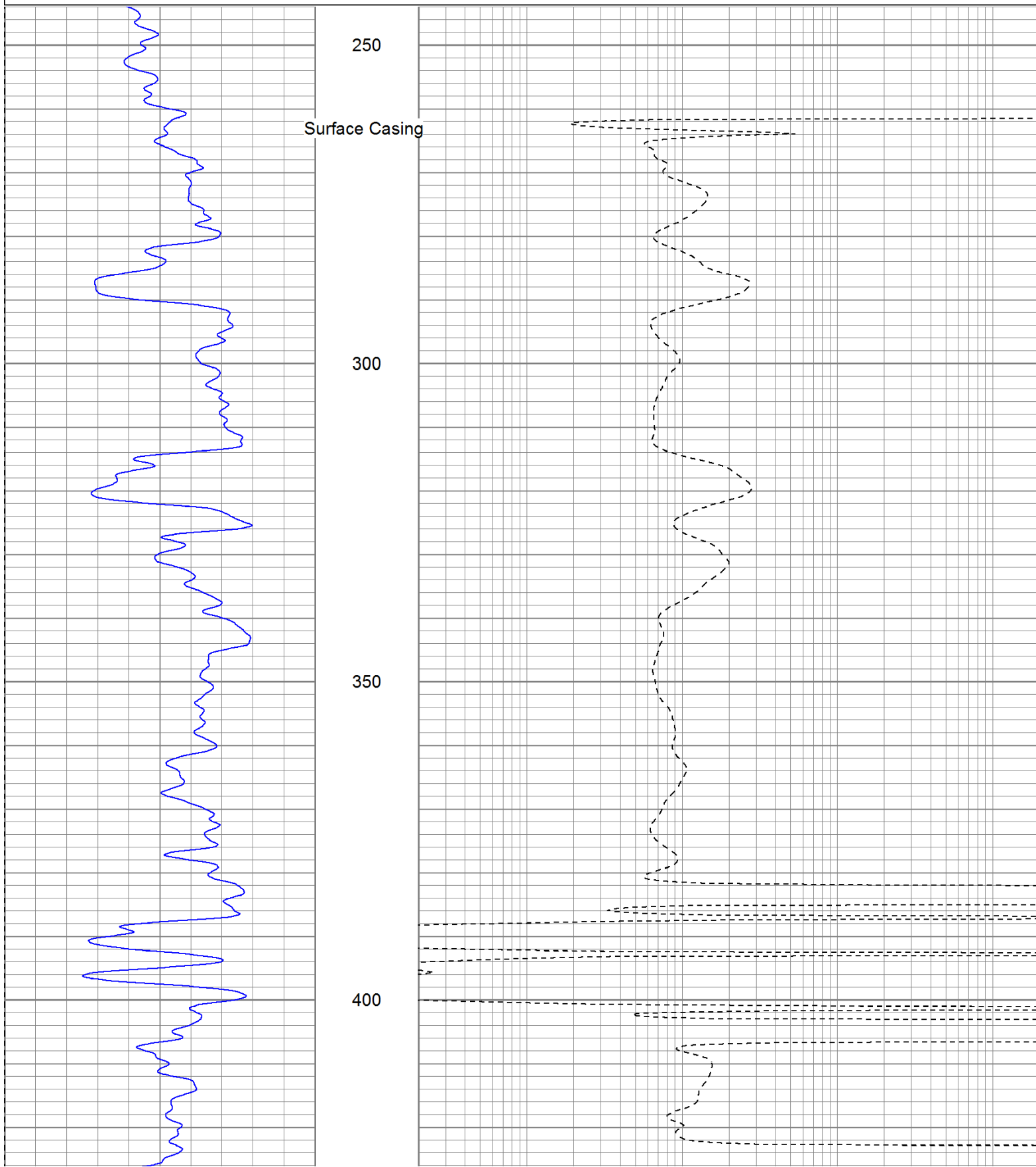
Comments

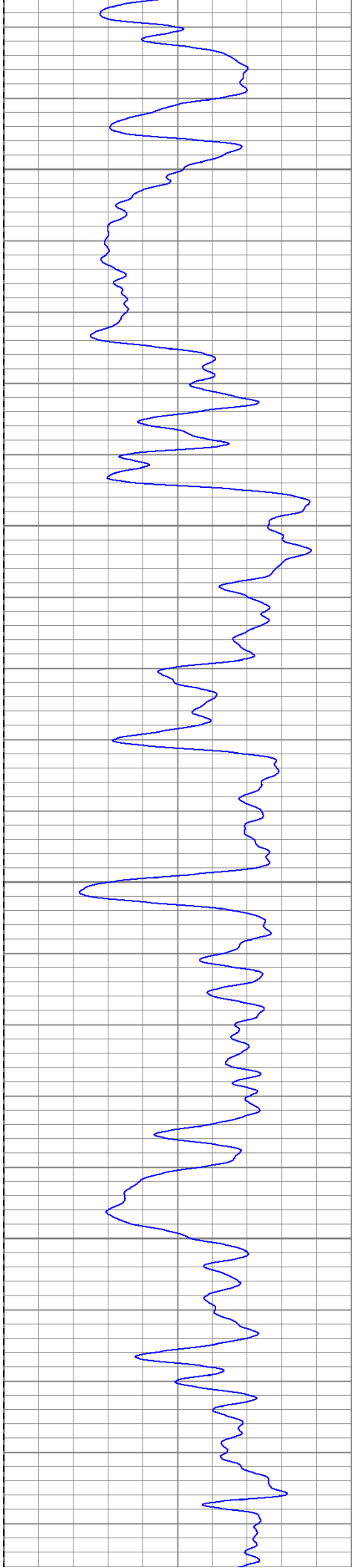
Directions:
 Burro Canyon, after leaving pavement take fourth left thru gate, drive past a location, first right up hill, third left , first right down hill , first right to location.

Database File: peteofederal.db
 Dataset Pathname: pass2.1
 Presentation Format: iel
 Dataset Creation: Sun Jun 05 17:31:56 2011 by Calc Open-Cased 110302
 Charted by: Depth in Feet scaled 1:240

0	GR (GAPI)	200
-200	SP (mV)	0

0.2	DIR (Ohm-m)	2000
0.2	SN (Ohm-m)	2000



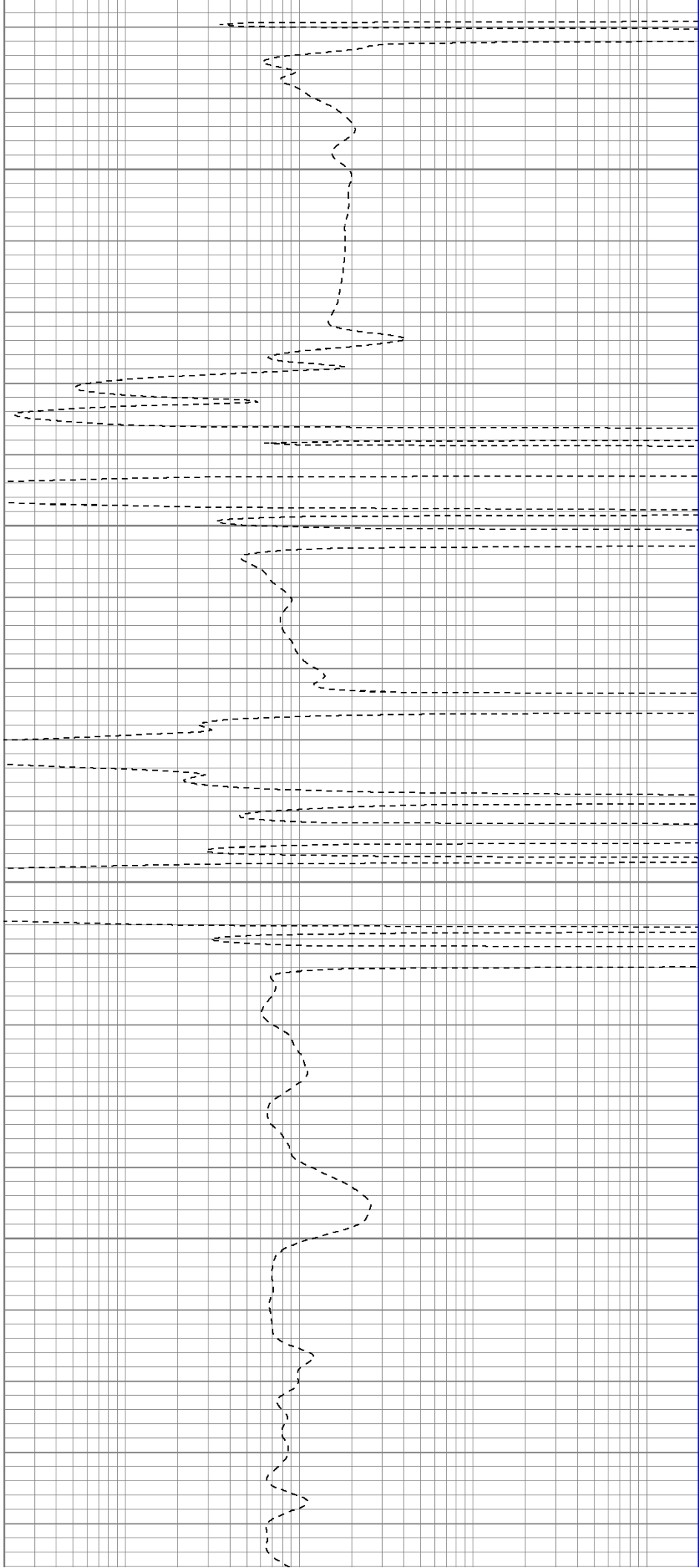


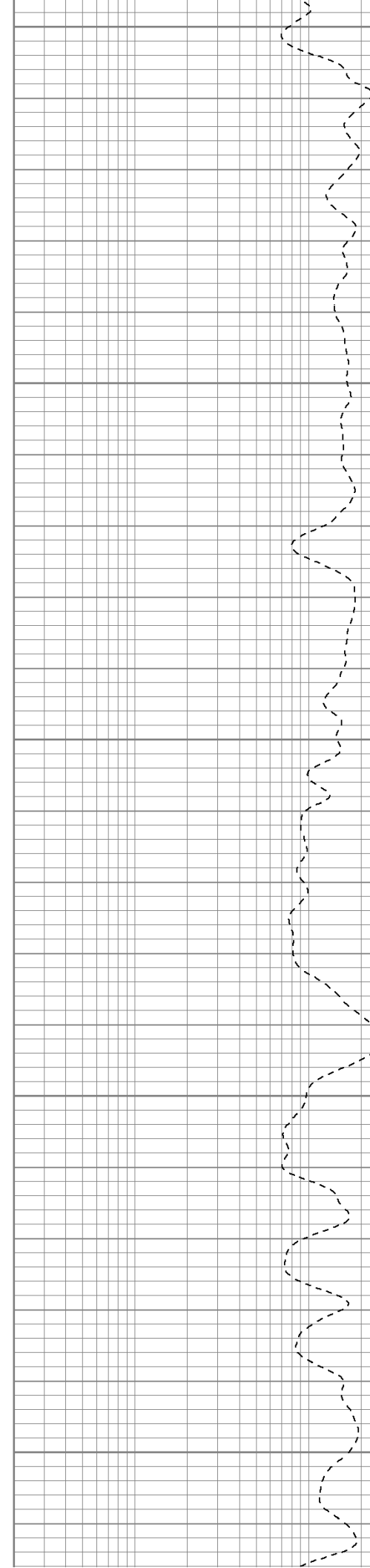
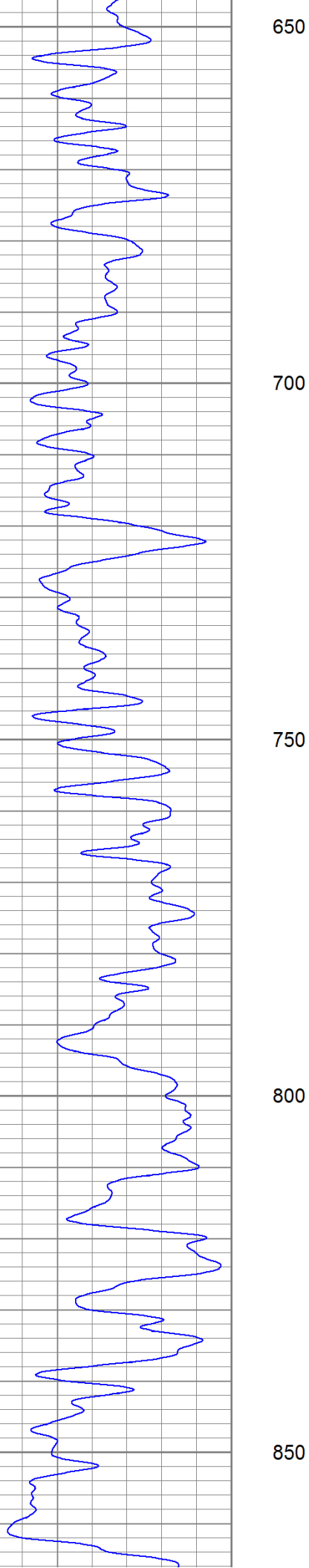
450

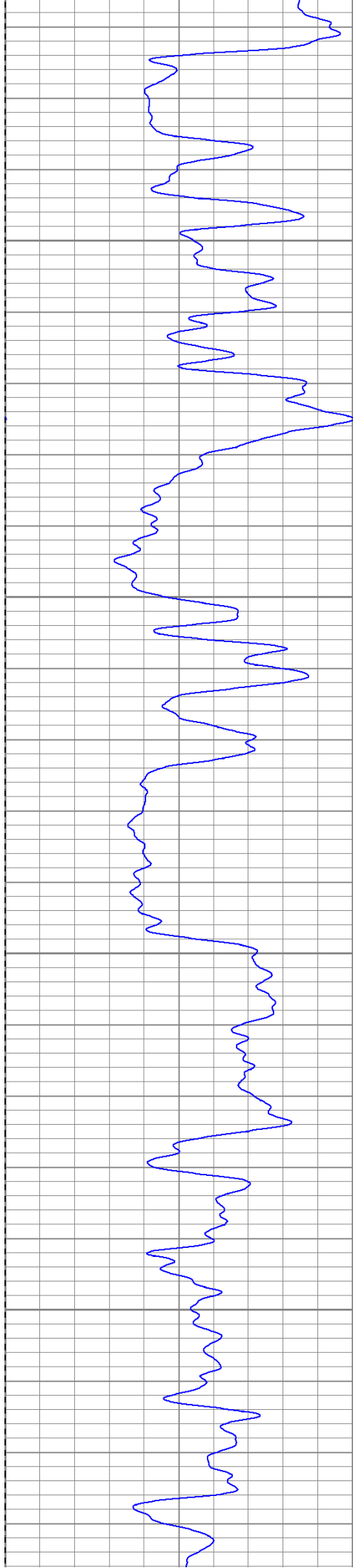
500

550

600





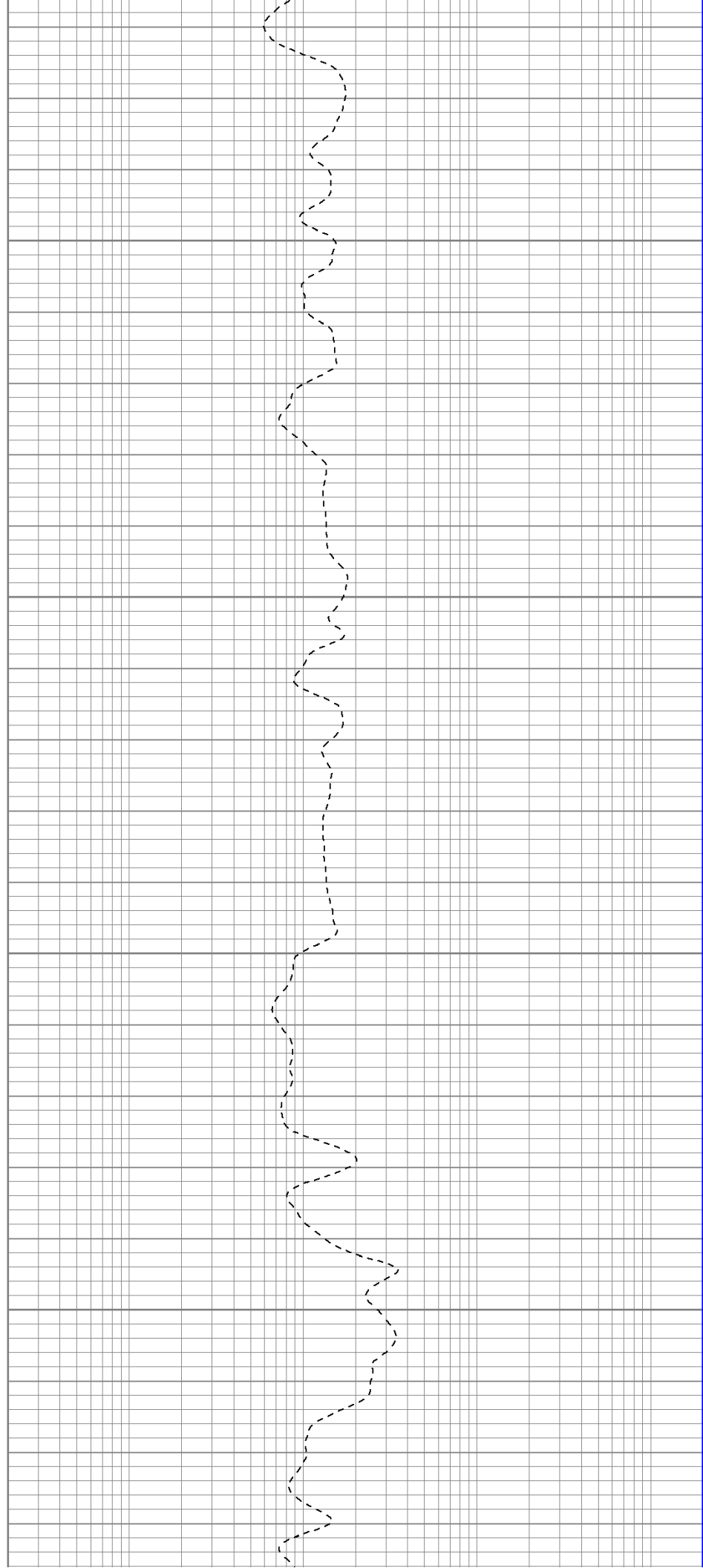


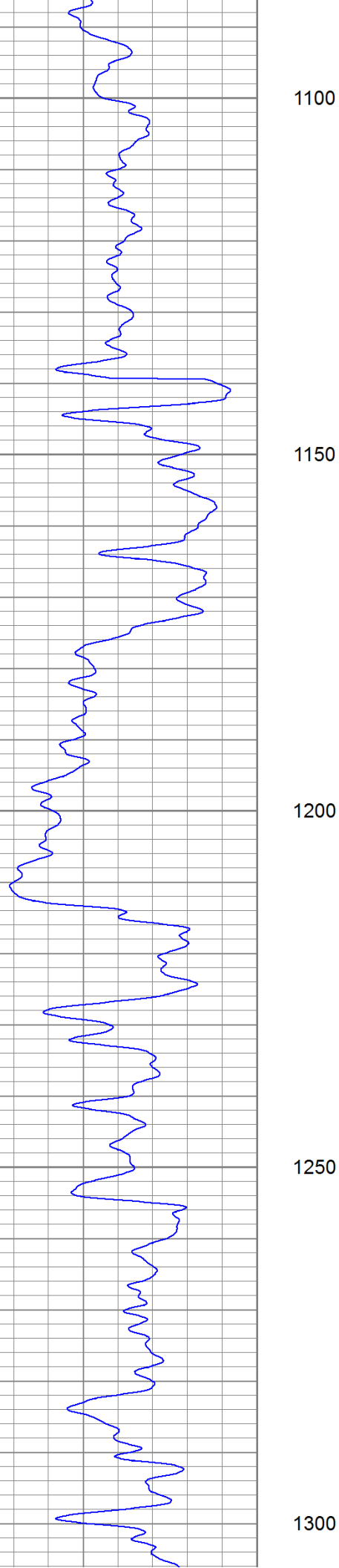
900

950

1000

1050





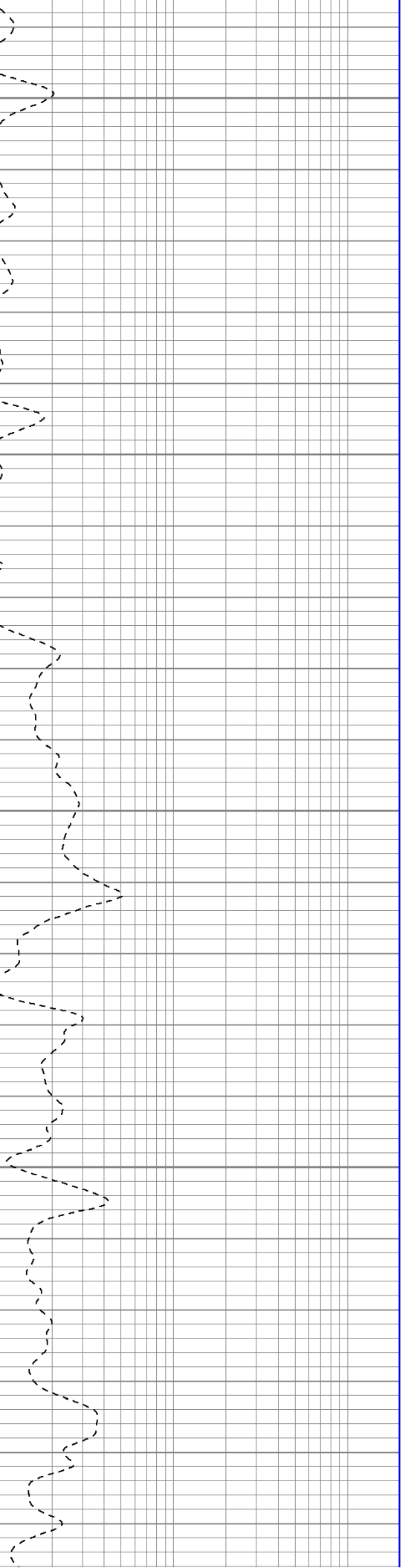
1100

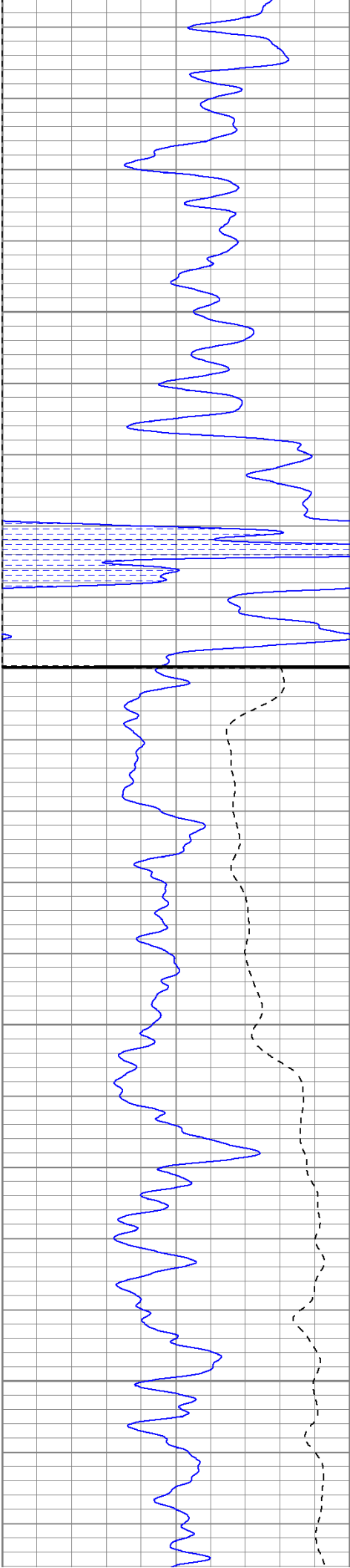
1150

1200

1250

1300



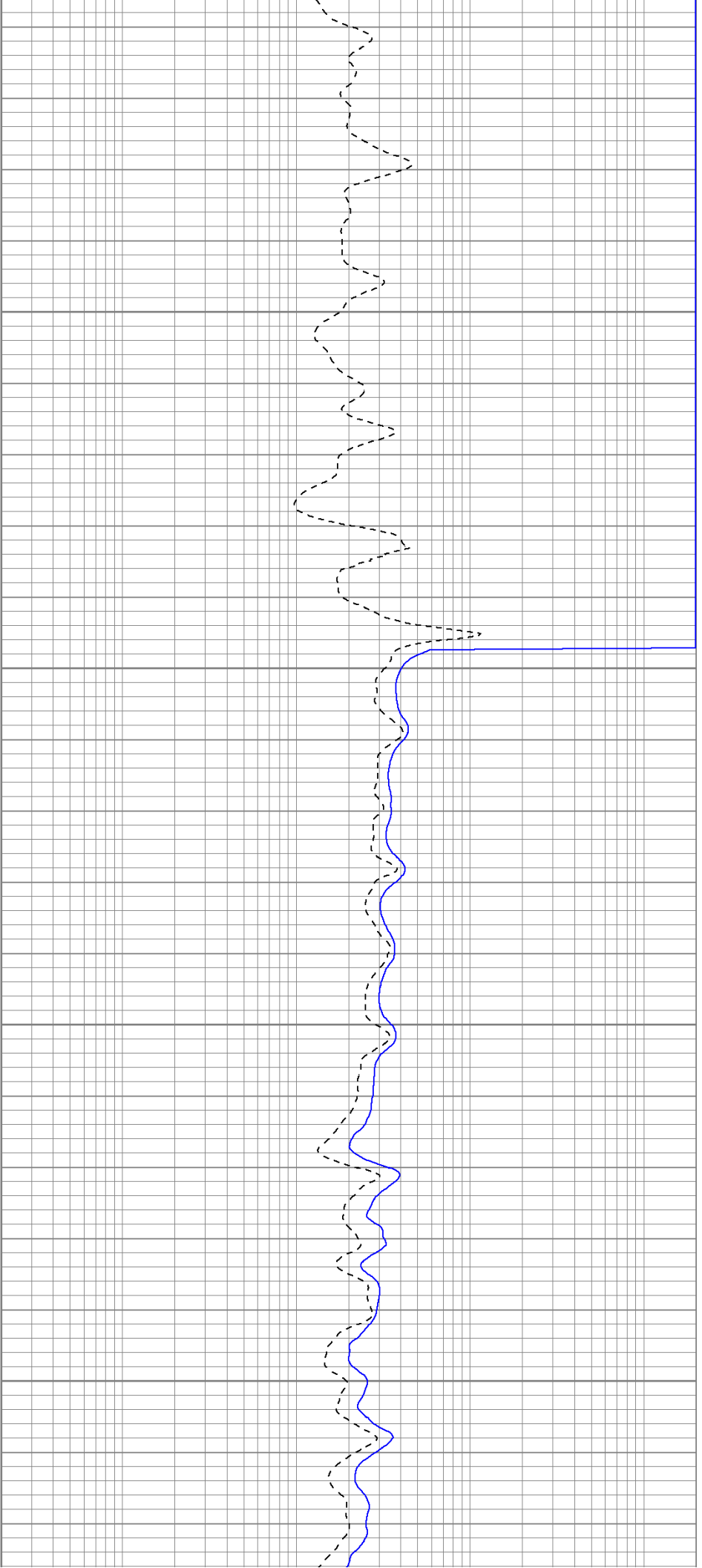


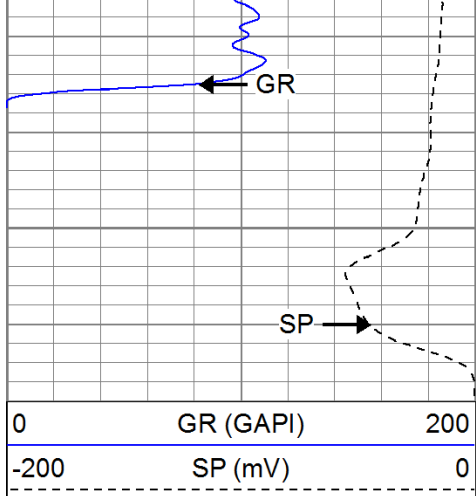
1350

Fluid Level
1400

1450

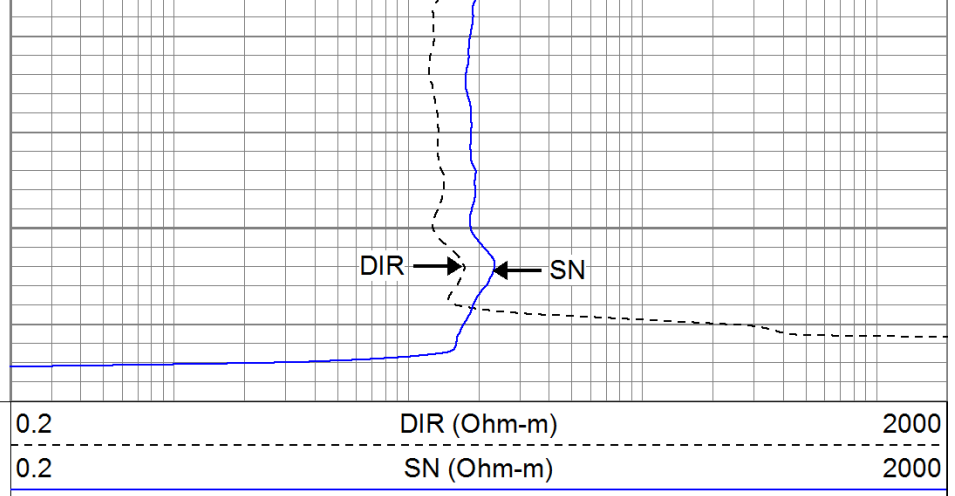
1500





1550

0	GR (GAPI)	200
-200	SP (mV)	0



0.2	DIR (Ohm-m)	2000
0.2	SN (Ohm-m)	2000

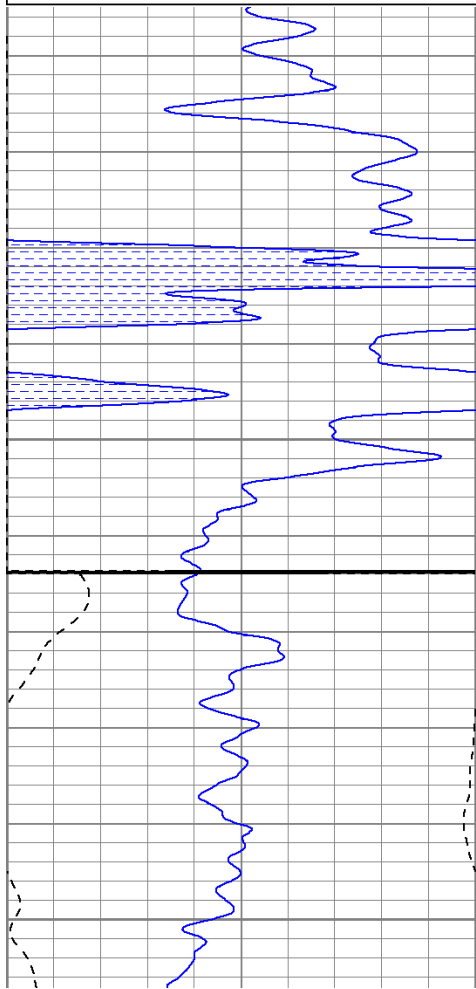


Repeat Pass

Database File: peteofederal.db
 Dataset Pathname: pass1.1
 Presentation Format: iel
 Dataset Creation: Sun Jun 05 18:04:32 2011 by Calc Open-Cased 110302
 Charted by: Depth in Feet scaled 1:240

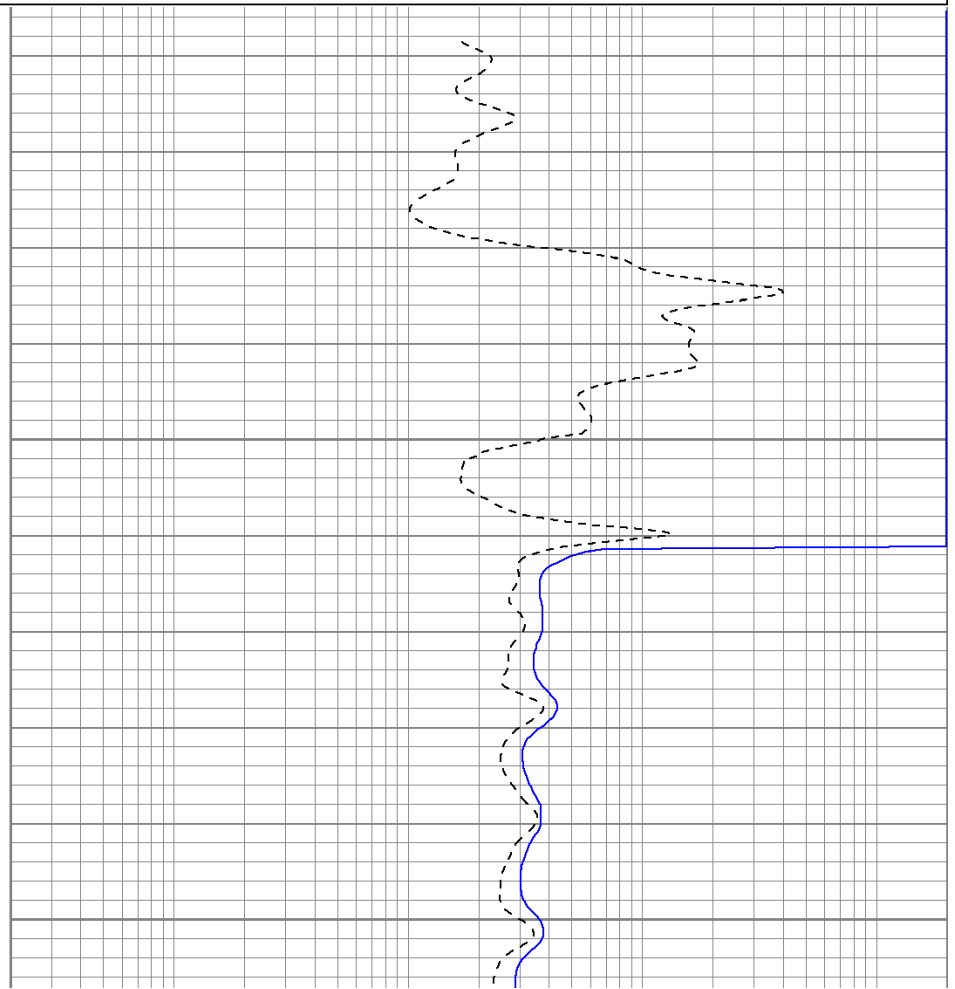
0	GR (GAPI)	200
-200	SP (mV)	0

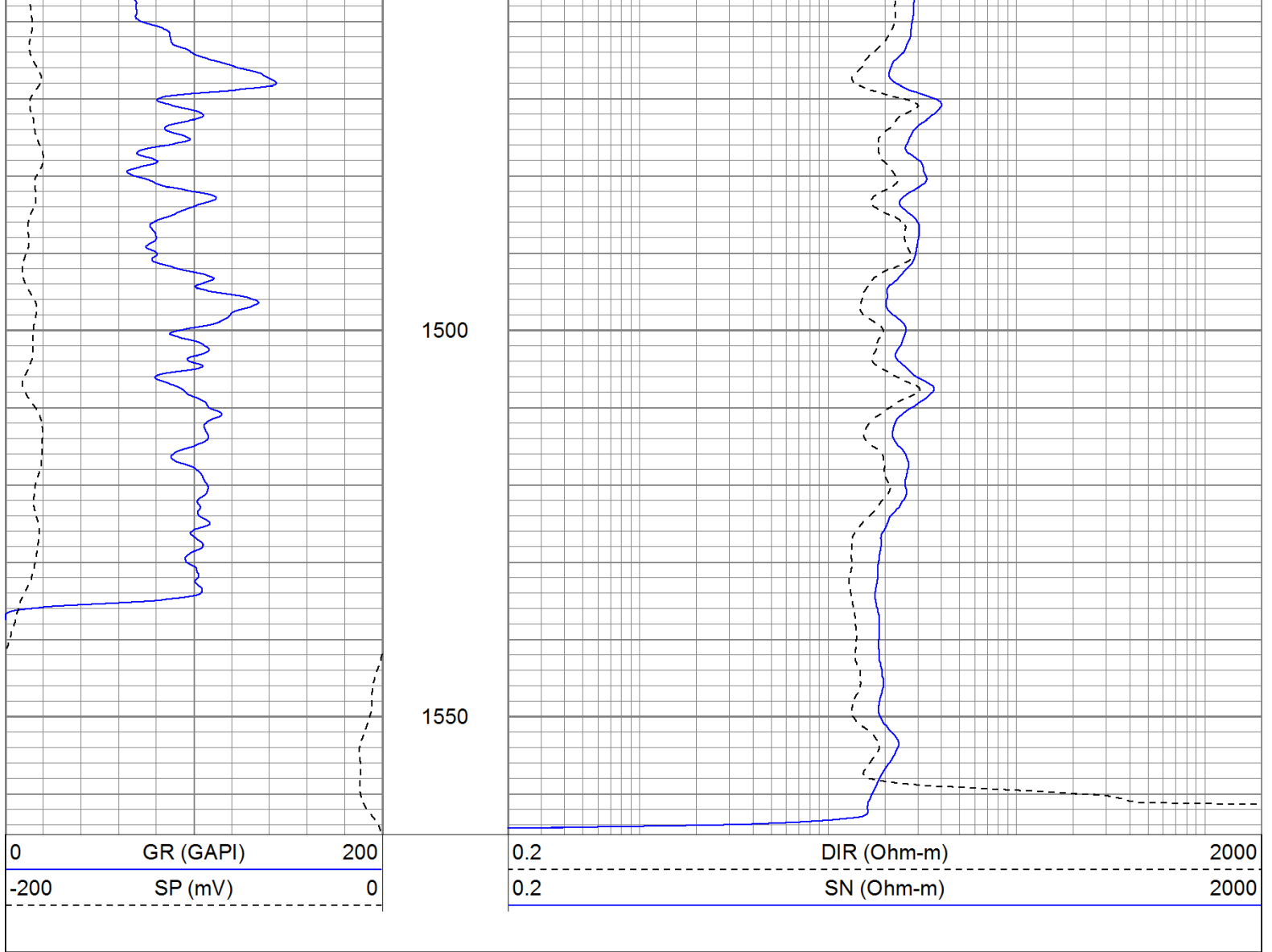
0.2	DIR (Ohm-m)	2000
0.2	SN (Ohm-m)	2000



1400

1450





Calibration Report

Database File: peteofederal.db
 Dataset Pathname: pass1
 Dataset Creation: Sat Jun 04 20:03:56 2011 by Log Open-Cased 110302

Induction Tool Calibration Report

Serial Number: 701
 Tool Model: Probe
 Downhole Cal Performed: Fri May 13 12:26:14 2011
 Surface Cal Performed: Wed Apr 27 12:27:07 2011
 After Survey Verification Performed:

Surface Calibration:	Air	Loop	
Conductivity Reference:	0.000	500.000	mmho
Conductivity Reading:	0.006	0.644	V
Internal Reference:	Zero	Cal	
Conductivity Reference:	0.000	500.000	mmho
Conductivity Reading:	0.007	0.643	V

Downhole Calibration:	Internal Zero	Internal Cal	
Conductivity Reference:	0.703	499.163	mmho
Conductivity Reading:	0.000	0.000	V
Short Normal Reference:	0.000	20.000	Ohm-m
Short Normal Reading:	0.005	0.214	V

Results:	Gain	Offset
Loop Conductivity:	783.886	-4.674

Downhole Correction: 1.000 0.000
 Short Normal Resistivity: 95.281 -0.432

After Survey Verification Internal Zero Internal Cal
 Conductivity Reading: 0.000 0.000 V
 Conductivity Result: 0.000 0.000 mmho
 Short Normal Reading: 0.000 0.000 V
 Short Normal Result: 0.000 0.000 Ohm-m

Compensated Density Calibration Report

Serial-Model: 901-2.75POH
 Source / Verifier: /
 Master Calibration Performed: Tue May 17 10:06:24 2011
 Before Survey Verification Performed:
 After Survey Verification Performed:

Master Calibration

	Density		Far Detector	Near Detector	
Magnesium	1.710	g/cc	1001.79	578.48	cps
Aluminum	2.590	g/cc	180.36	300.39	cps
Spine Angle = 69.08			Density/Spine Ratio = 0.479		
	Size		Reading		
Small Ring	8.00	in	2.50	V	
Large Ring	16.00	in	4.57	V	

Before Survey Verification

Target	Measured
g/cc	g/cc
g/cc	g/cc
g/cc	g/cc

After Survey Verification

Target	Measured
g/cc	g/cc
g/cc	g/cc
g/cc	g/cc

Neutron Calibration Report

Serial Number: 802
 Tool Model: 2.75POH
 Performed: Tue May 03 12:28:21 2011

Calibrator Value: 700 NAPI
 Calibrator Reading: 1000 cps
 Sensitivity: 0.7 NAPI/cps

Gamma Ray Calibration Report

Serial Number: 801
 Tool Model: 2.75POH
 Performed: Thu May 05 13:29:10 2011

Calibrator Value: 200.0 GAPI
 Background Reading: 8.0 cps
 Calibrator Reading: 264.7 cps

Sensitivity:

0.6000

GAPI/cps

Sensor	Offset (ft)	Schematic	Description	Len (ft)	OD (in)	Wt (lb)	
GR	29.58		None	0.75	1.50	5.00	
			GR-2.75POH (801) Probe 2.75" Probe Open Hole Gamma Ray	3.73	2.75	43.00	
NEU	24.04		NEU-2.75POH (802) Probe Epithermal	4.75	2.75	58.00	
LSD	16.21			CDL-2.75POH (901) Probe	8.43	2.75	106.00
DCAL	15.94						
SSD	15.69						
DIC	6.24		IEL-Probe (701)	13.46	2.75	93.00	
SP	2.25						
SN	1.71						
		Dataset:	peteofederal.db: field/well/run1/pass1				
		Total Length:	31.11 ft				
		Total Weight:	305.00 lb				
		O.D.	2.75 in				