

Cement Bond Log

| | | | |
|------------------------|-----------------|---------------------------|--|
| Company | | Pioneer Natural Resources | |
| Well | | Sundance 24-28 Tr | |
| Field | | Purgatorie River | |
| County | | Las Animas | |
| State | | Colorado | |
| Location: | | API #: 05-071-09791-00 | |
| SEC 28 | | TWP 32S | |
| RGE 66W | | 391' FSL & 1538' FWL | |
| Permanent Datum | | GL | Elevation 7418' |
| Log Measured From | | KB 4' AGL | |
| Drilling Measured From | | KB | Elevation K.B. 7422' D.F. 7418' G.L. 7418' |
| Date | 6-2-11 | | |
| Run Number | One | | |
| Depth Driller | 1785' | | |
| Depth Logger | 1749' | | |
| Bottom Logged Interval | 1745' | | |
| Top Log Interval | Surface | | |
| Open Hole Size | 7 7/8 | | |
| Type Fluid | water | | |
| Density / Viscosity | /// | | |
| Max. Recorded Temp. | 86 DEG F @ 888' | | |
| Estimated Cement Top | 30' | | |
| Time Well Ready | R.O.A | | |
| Time Logger on Bottom | 2:00 P.M. | | |
| Equipment Number | T590 | | |
| Location | Trinidad | | |
| Recorded By | C. Sisneros | | |
| Witnessed By | Mr. R. Gonzales | | |
| Borehole Record | | Tubing Record | |
| Run Number | Bit | From | To |
| | | | |
| | | | |
| | | | |
| | | | |
| Casing Record | Size | Wgt/Ft | Top |
| Surface String | 8 5/8" | | Bottom 888' |
| Prot. String | | | |
| Production String | 5 1/2" | | TD |
| Liner | | | |

<<< Fold Here >>>

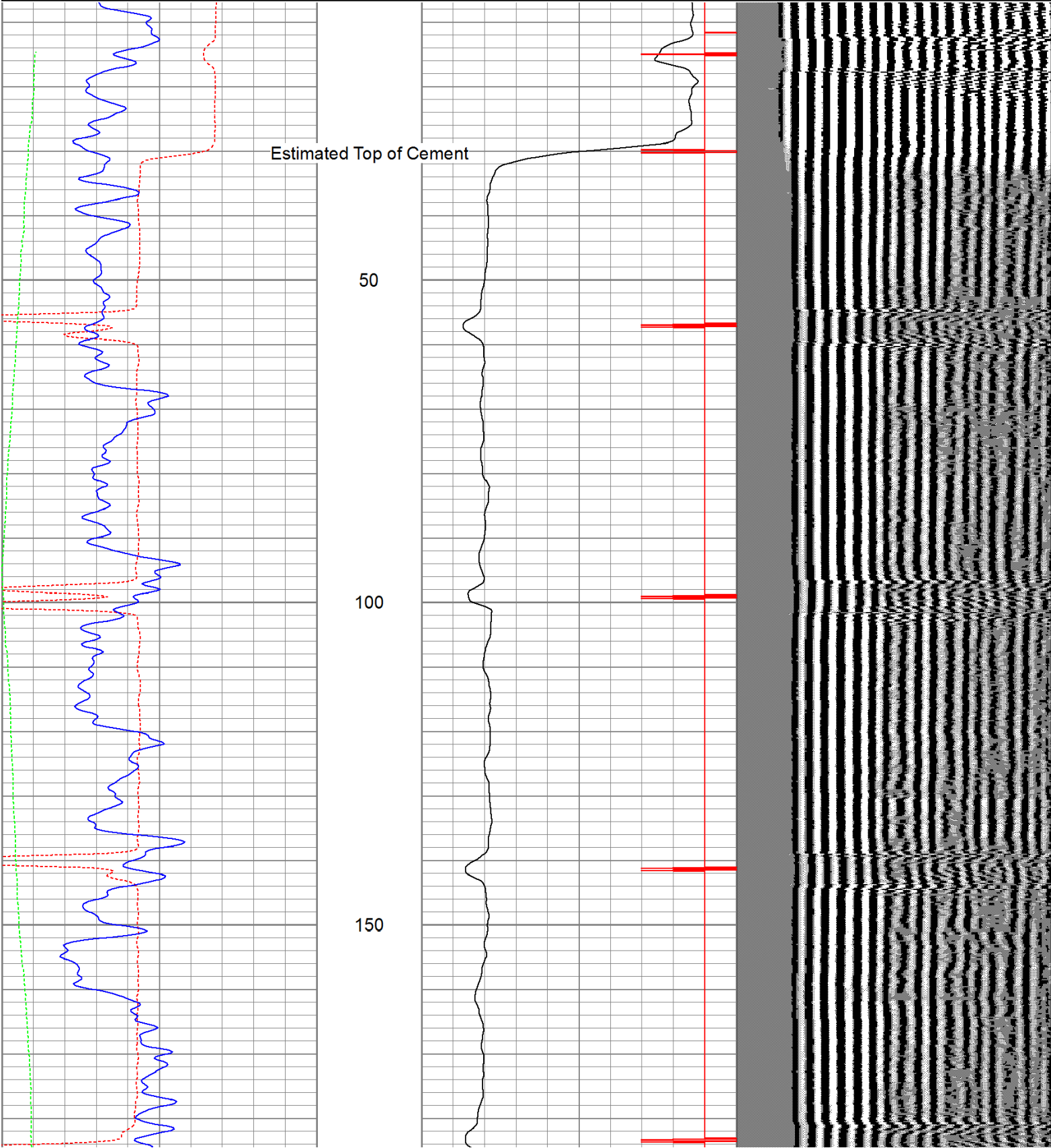
All interpretations are opinions based on inferences from electrical or other measurements and we cannot and do not guarantee the accuracy or correctness of any interpretation, and we shall not, except in the case of gross or willful negligence on our part, be liable or responsible for any loss, costs, damages, or expenses incurred or sustained by anyone resulting from any interpretation made by any of our officers, agents or employees. These interpretations are also subject to our general terms and conditions set out in our current Price Schedule.

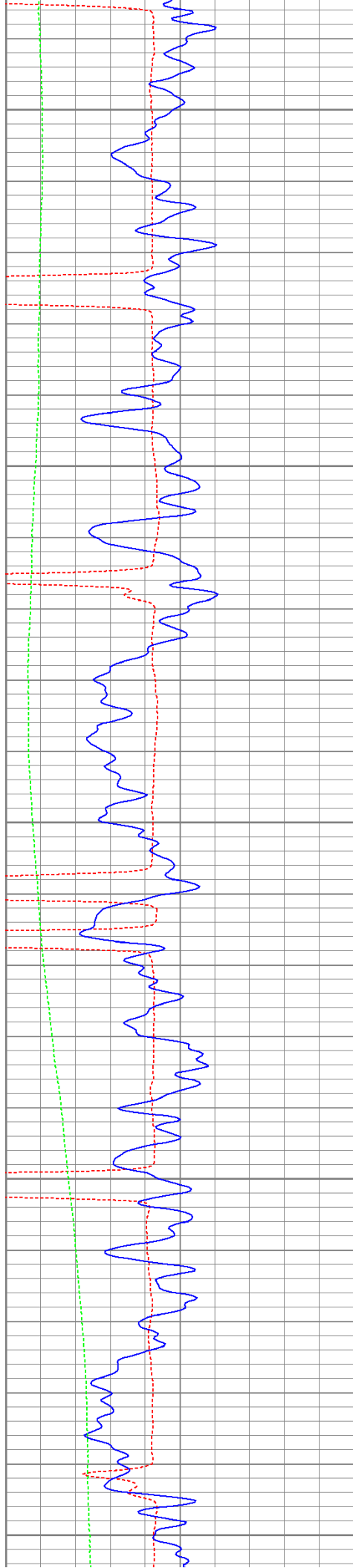
Comments

Log ran under 1000 PSI.
 Directions:
 Riley Canyon, straight at Post Office, left at Y, stay on main road and left on C.R. 30.1, right up hill to Cotton Tail Compressor Station, drive thru station, stay straight, second right, dead end on location.

Database File: sundancetr6211b.db
Dataset Pathname: pass4.1
Presentation Format: cbldig
Dataset Creation: Thu Jun 02 15:49:56 2011 by Calc Open-Cased 110302
Charted by: Depth in Feet scaled 1:240

| | | | | | | | | |
|-----|--------------------|-----|---|----------------|-----|-----|------------------|------|
| 400 | Travel Time (usec) | 200 | 0 | Amplitude (mV) | 100 | 200 | Variable Density | 1200 |
| 0 | GR (GAPI) | 200 | 9 | Collar Locator | -1 | | | |
| 0 | DEVI (°) | 10 | | | | | | |





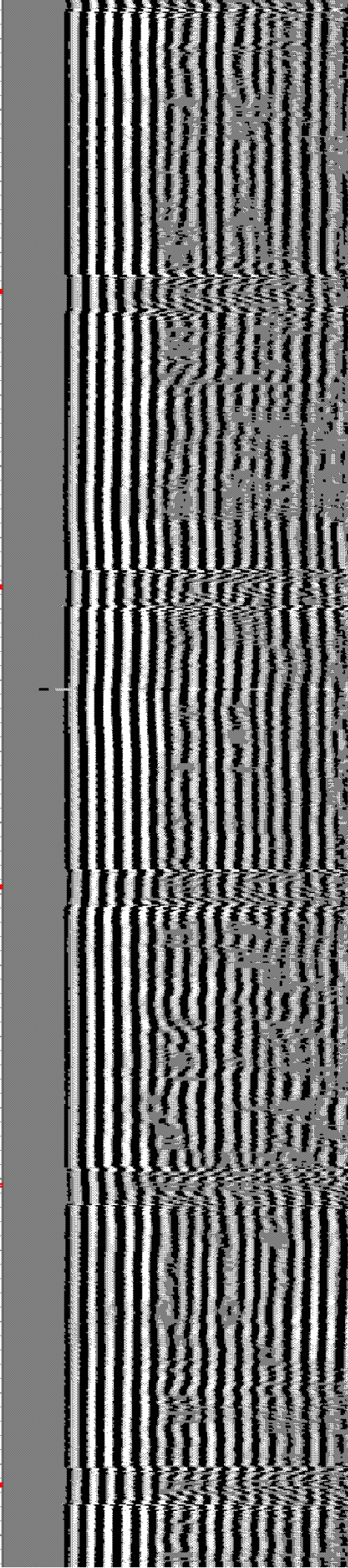
200

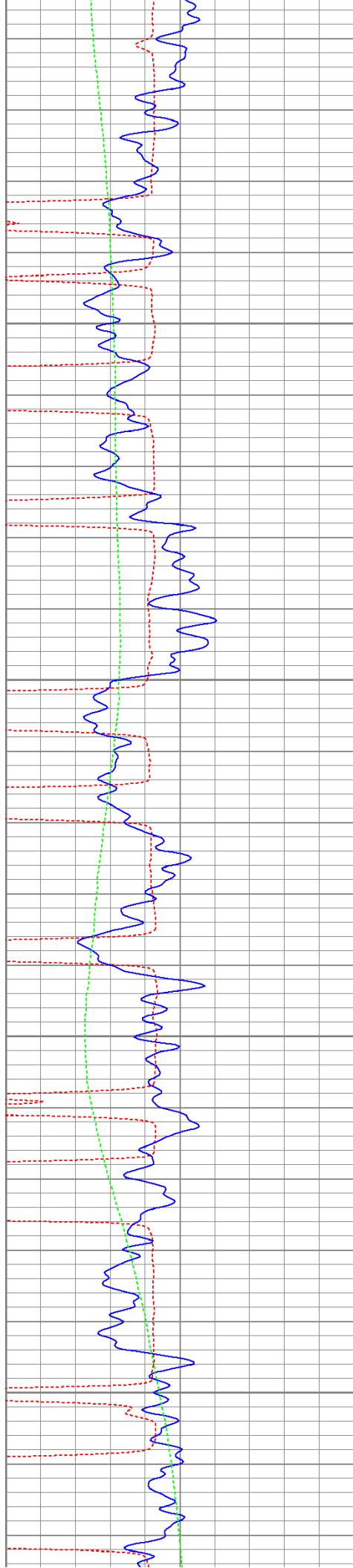
250

300

350

400



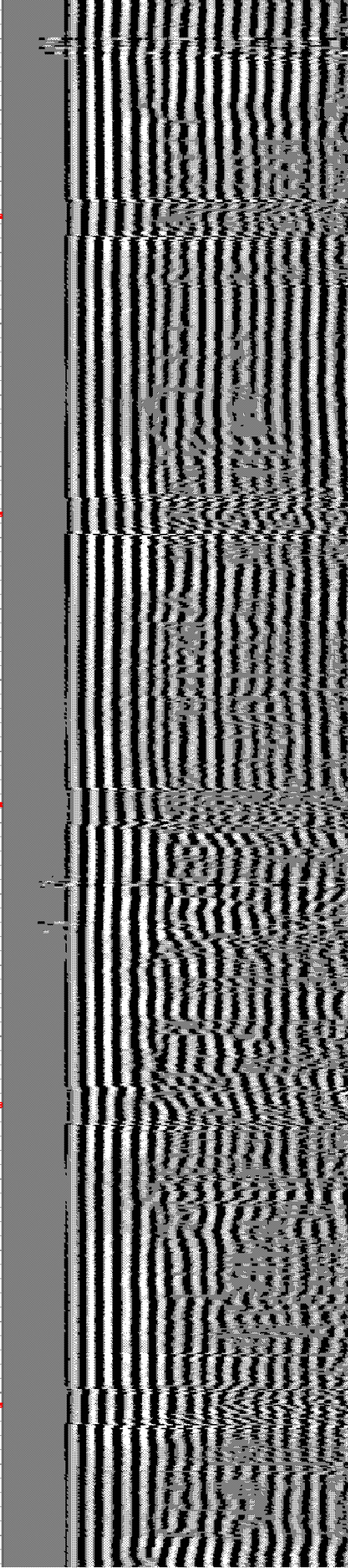
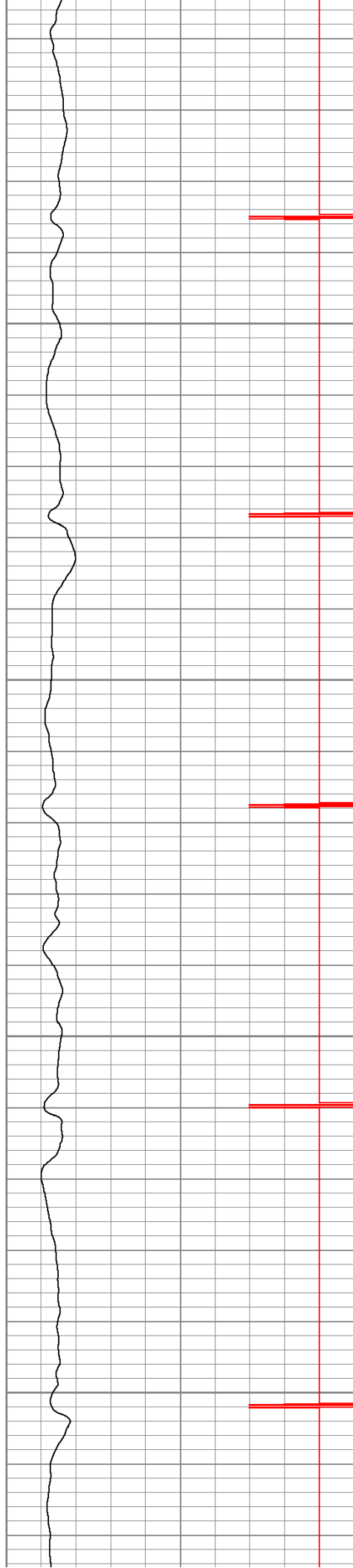


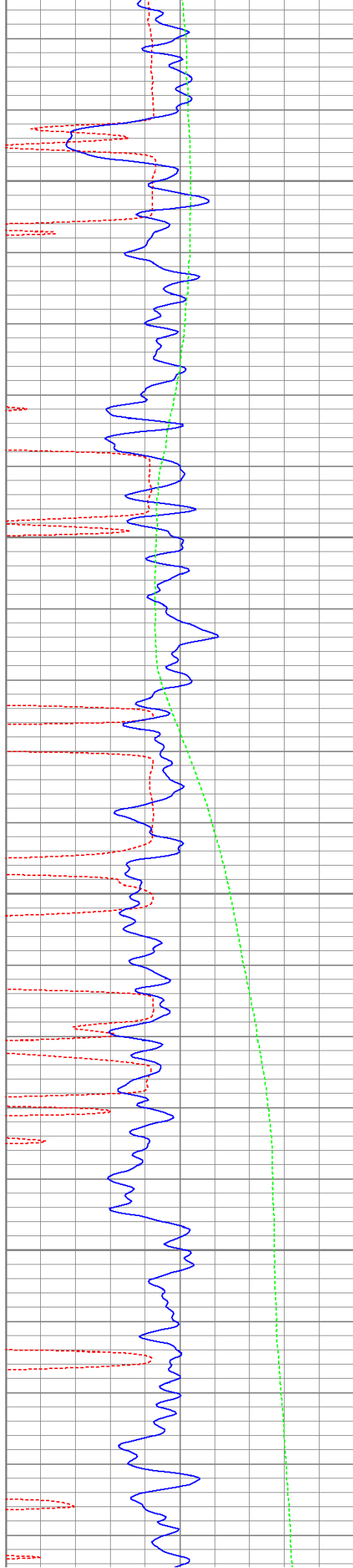
450

500

550

600



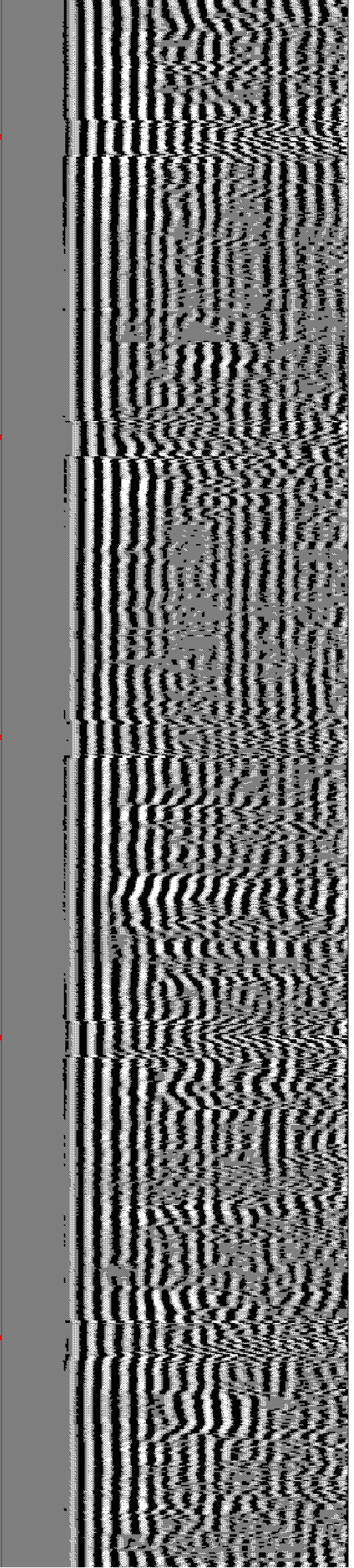
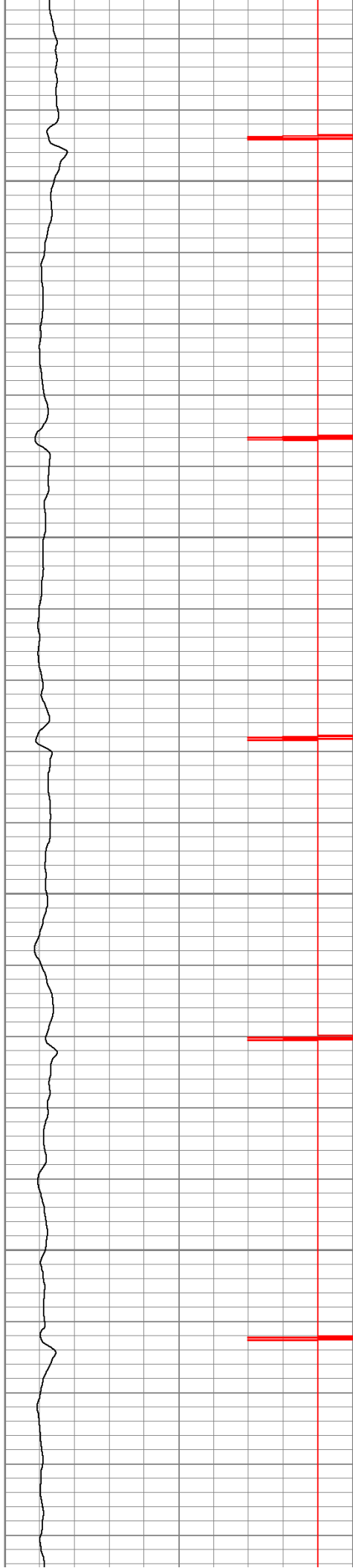


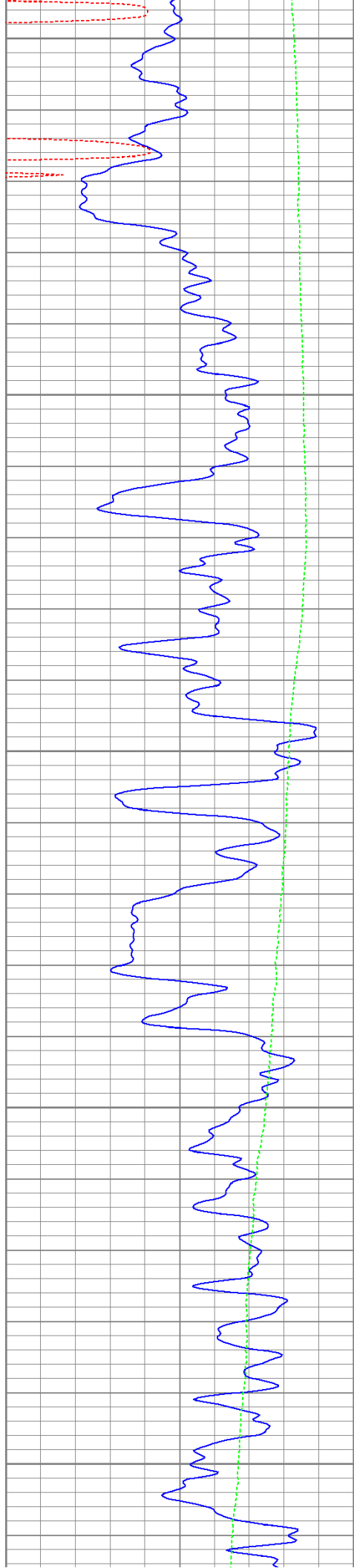
650

700

750

800





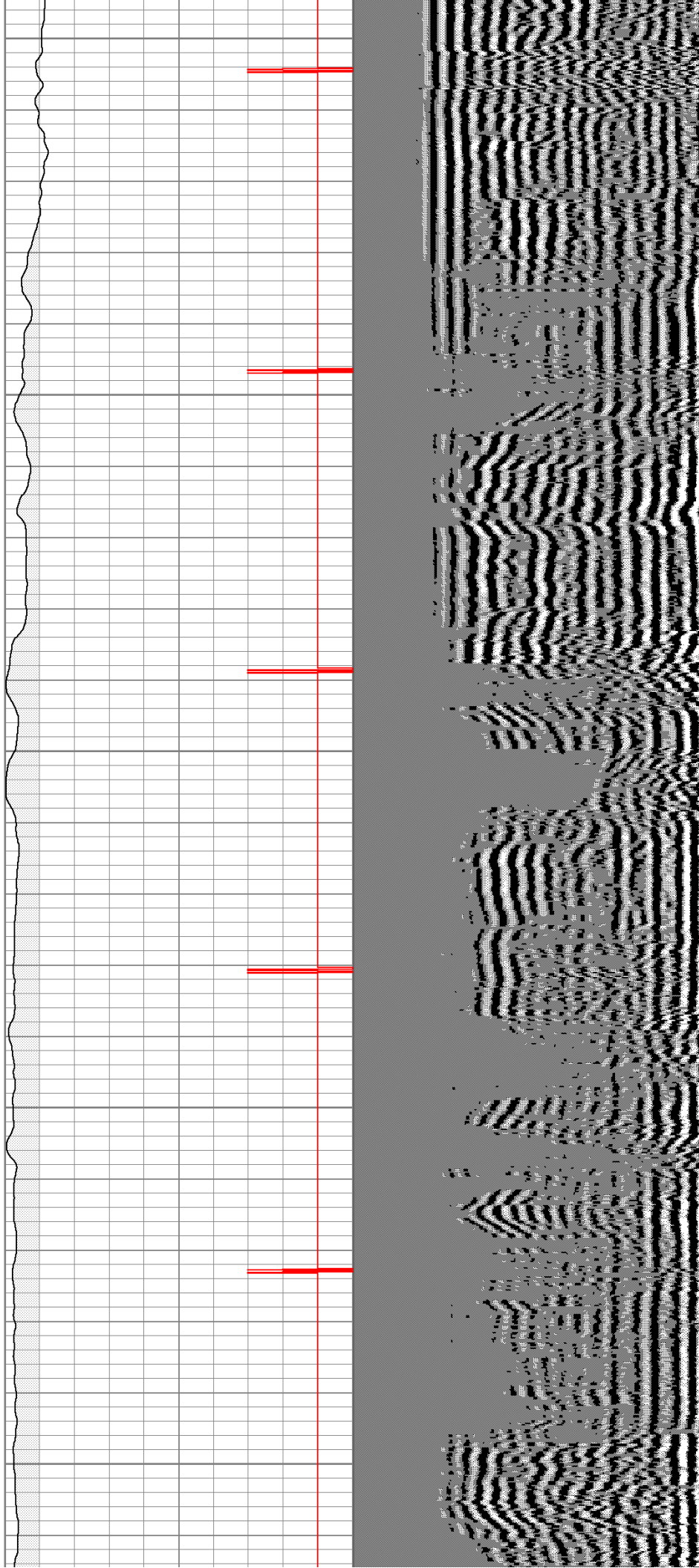
850

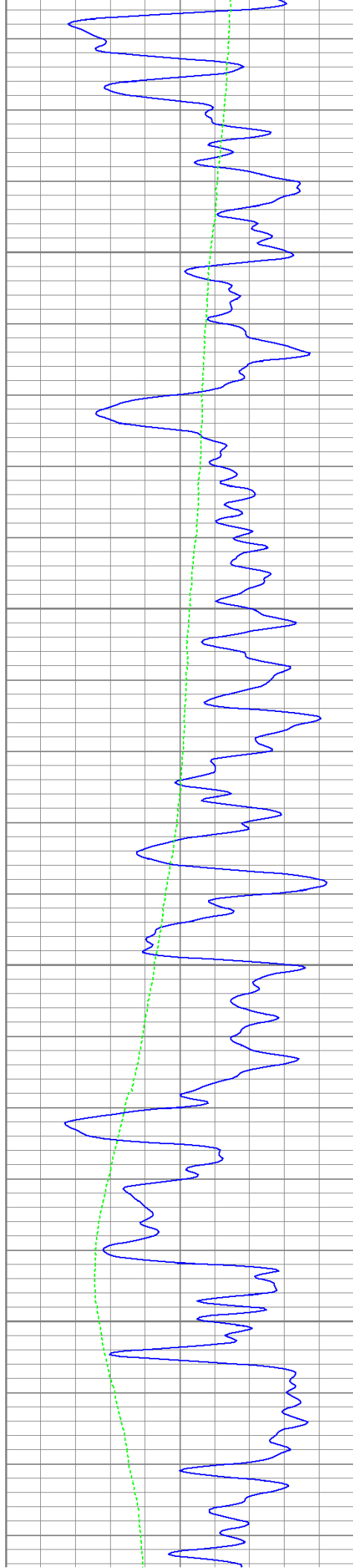
900

950

1000

1050



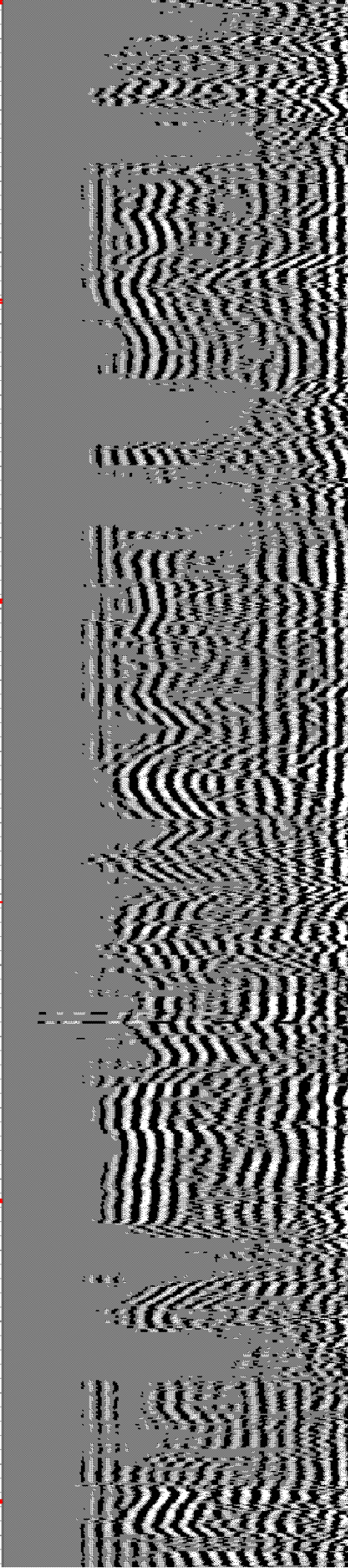
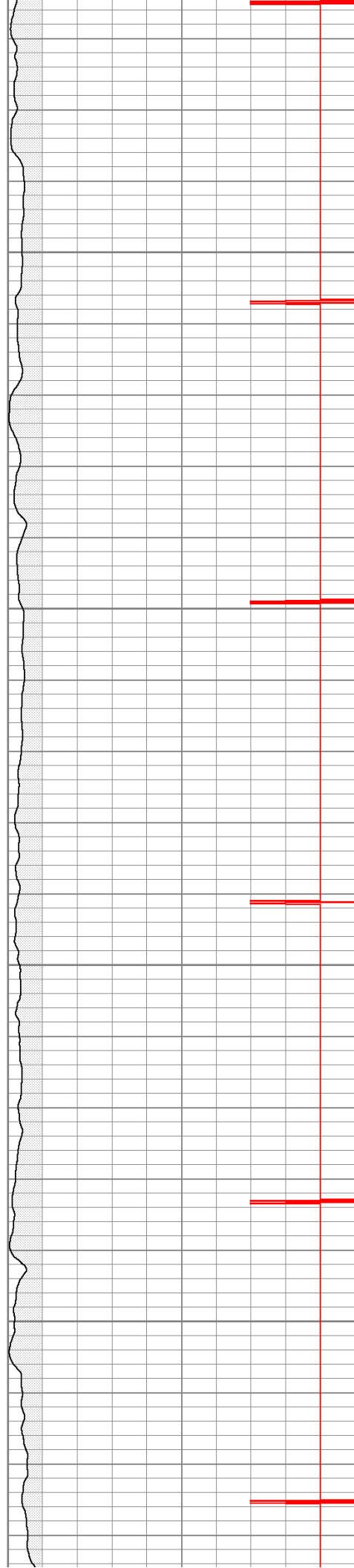


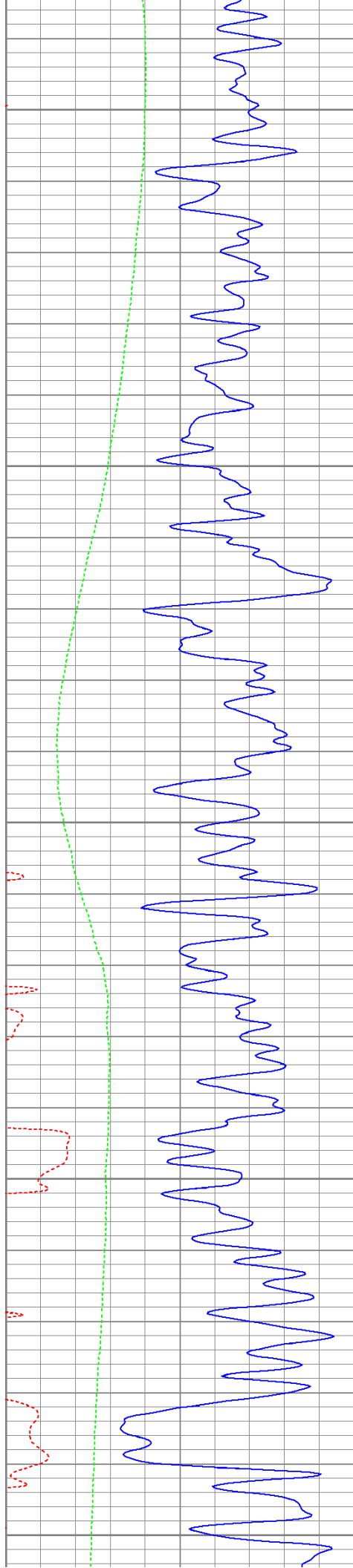
1100

1150

1200

1250





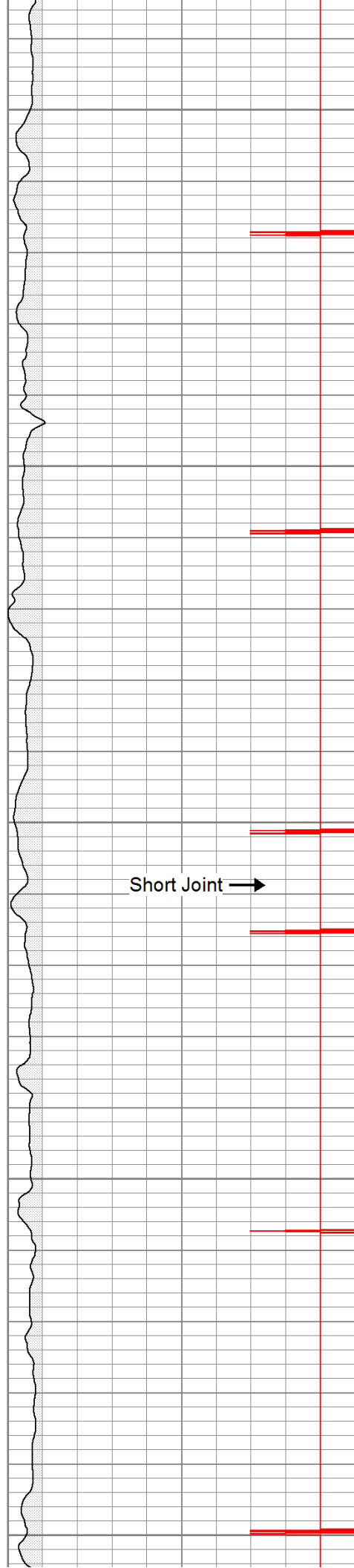
1300

1350

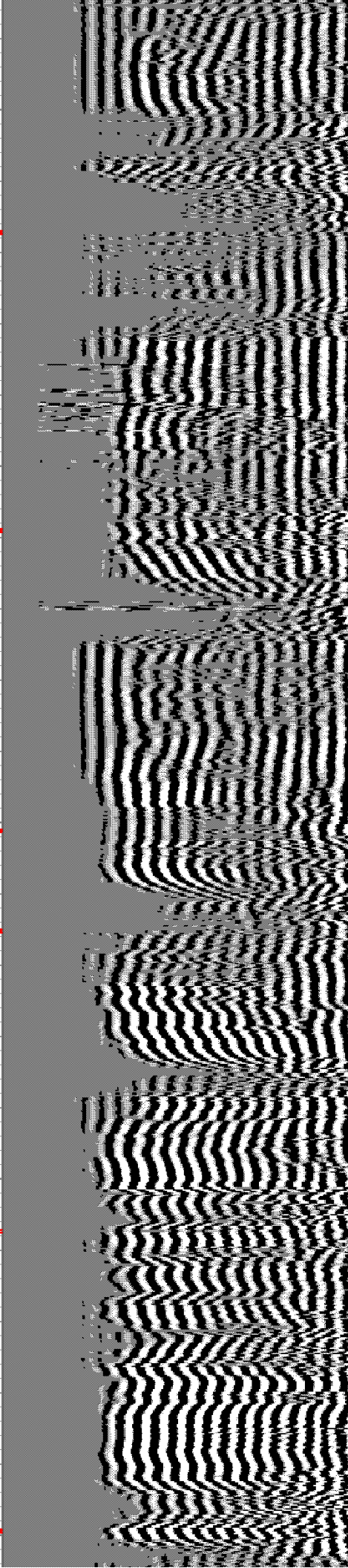
1400

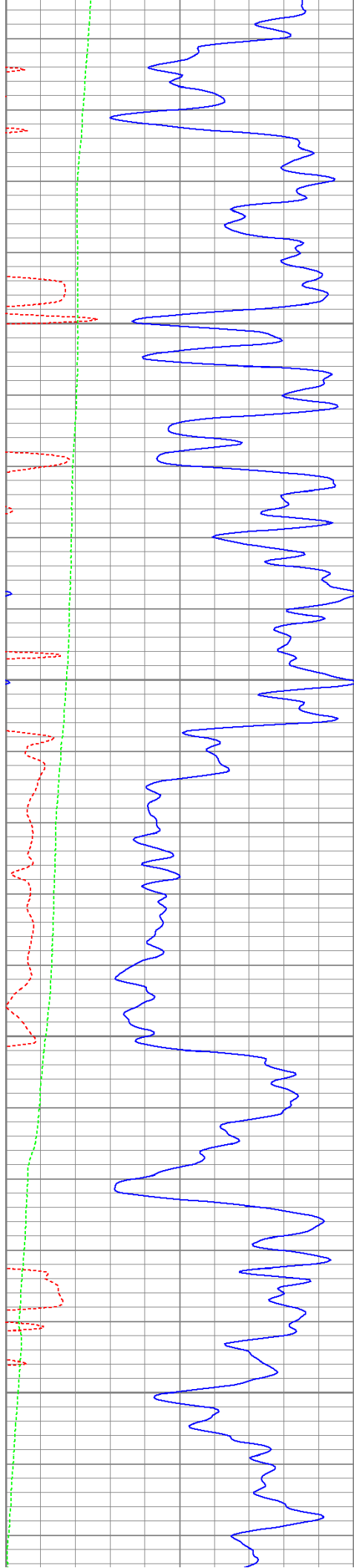
1450

1500



Short Joint →



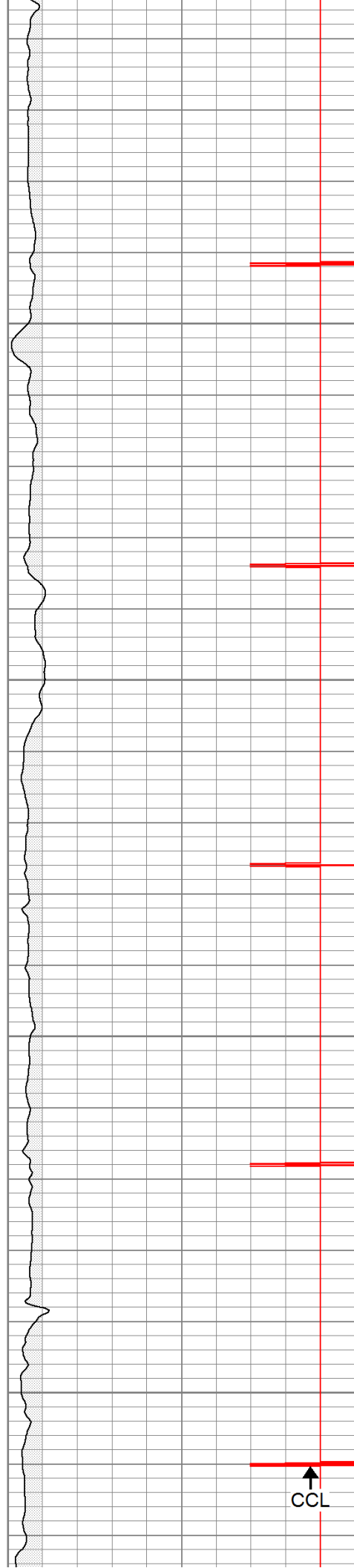


1550

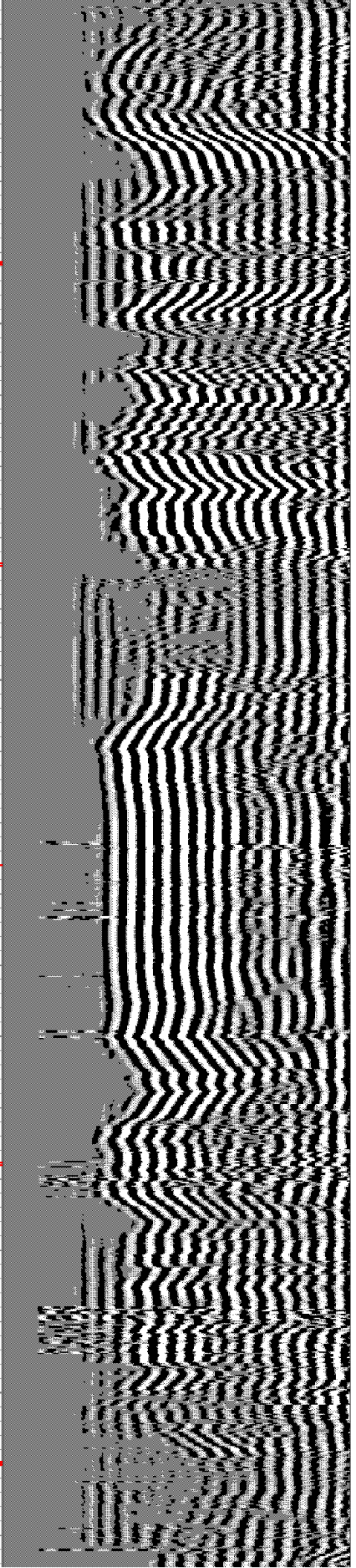
1600

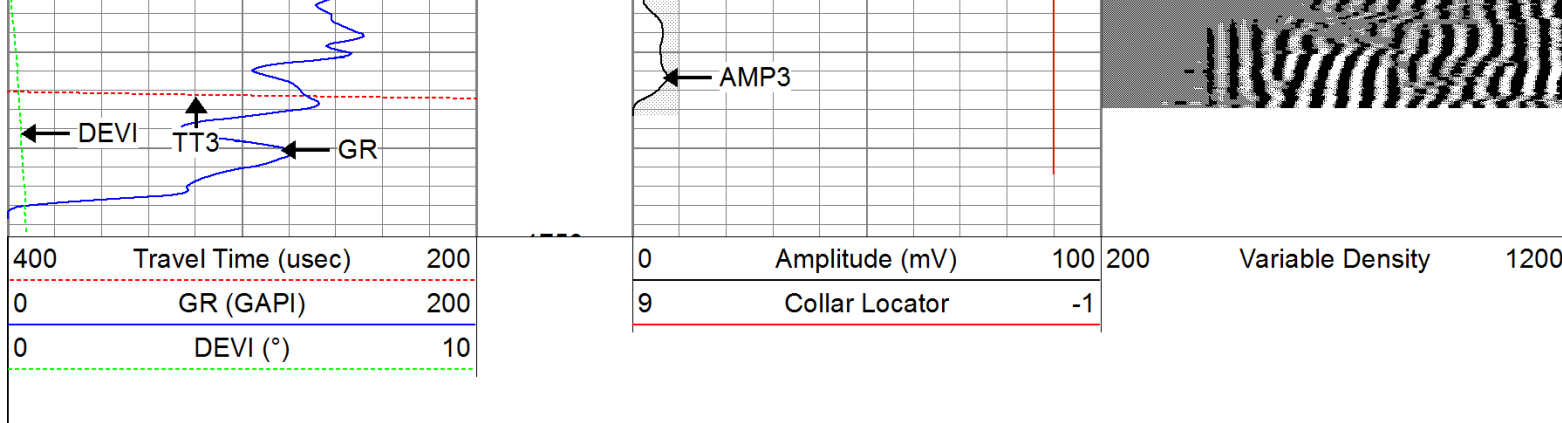
1650

1700



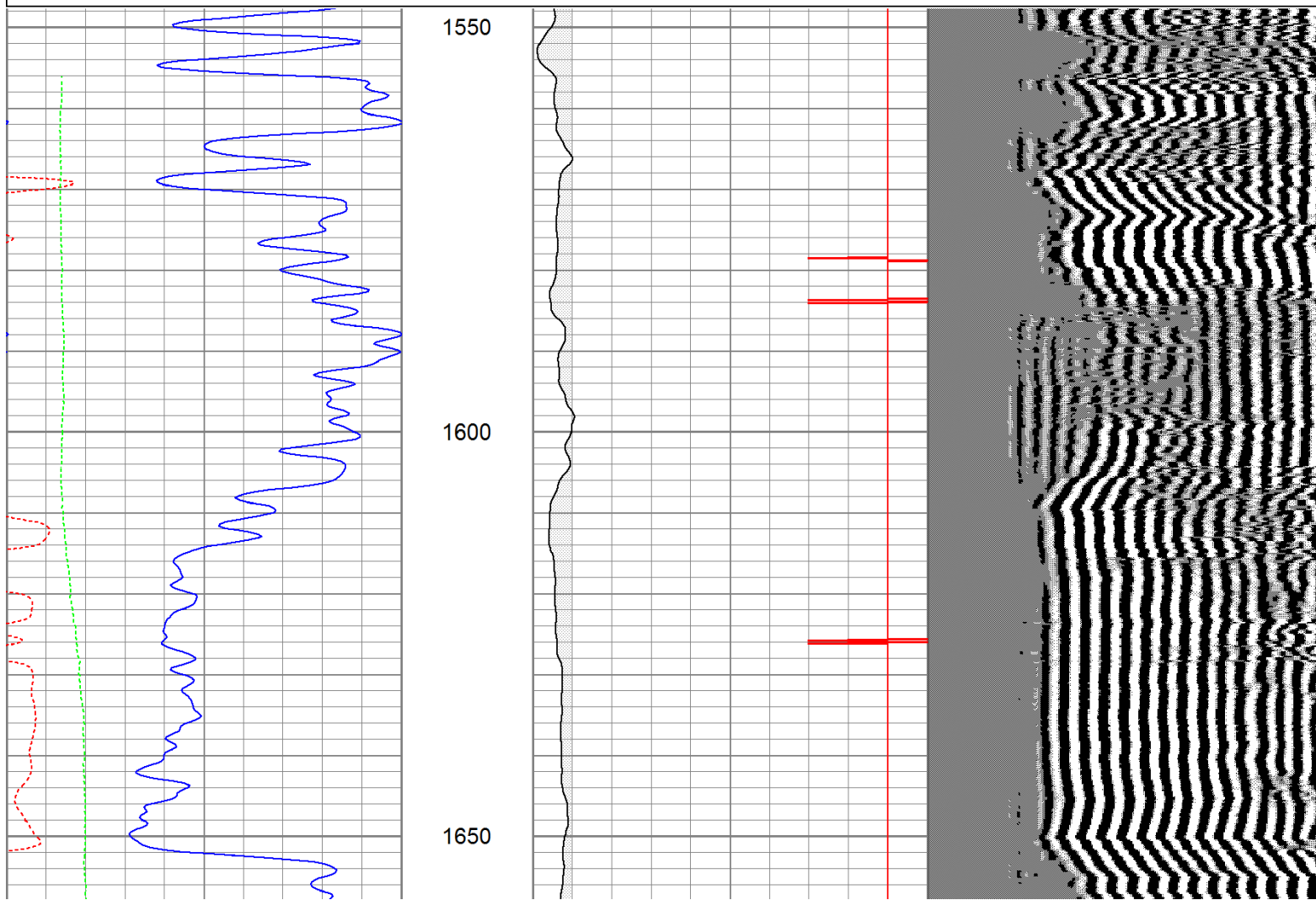
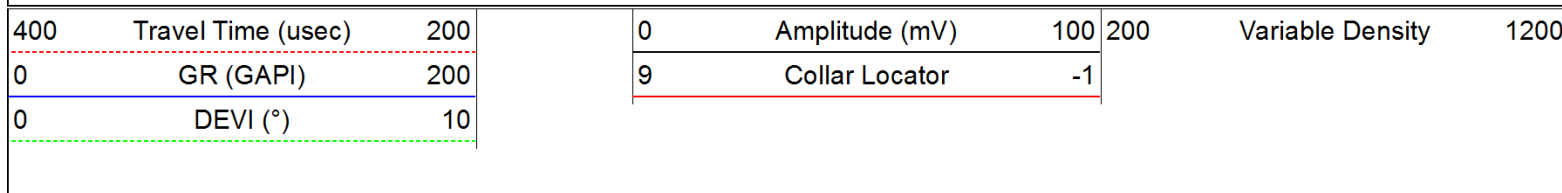
↑
CCL

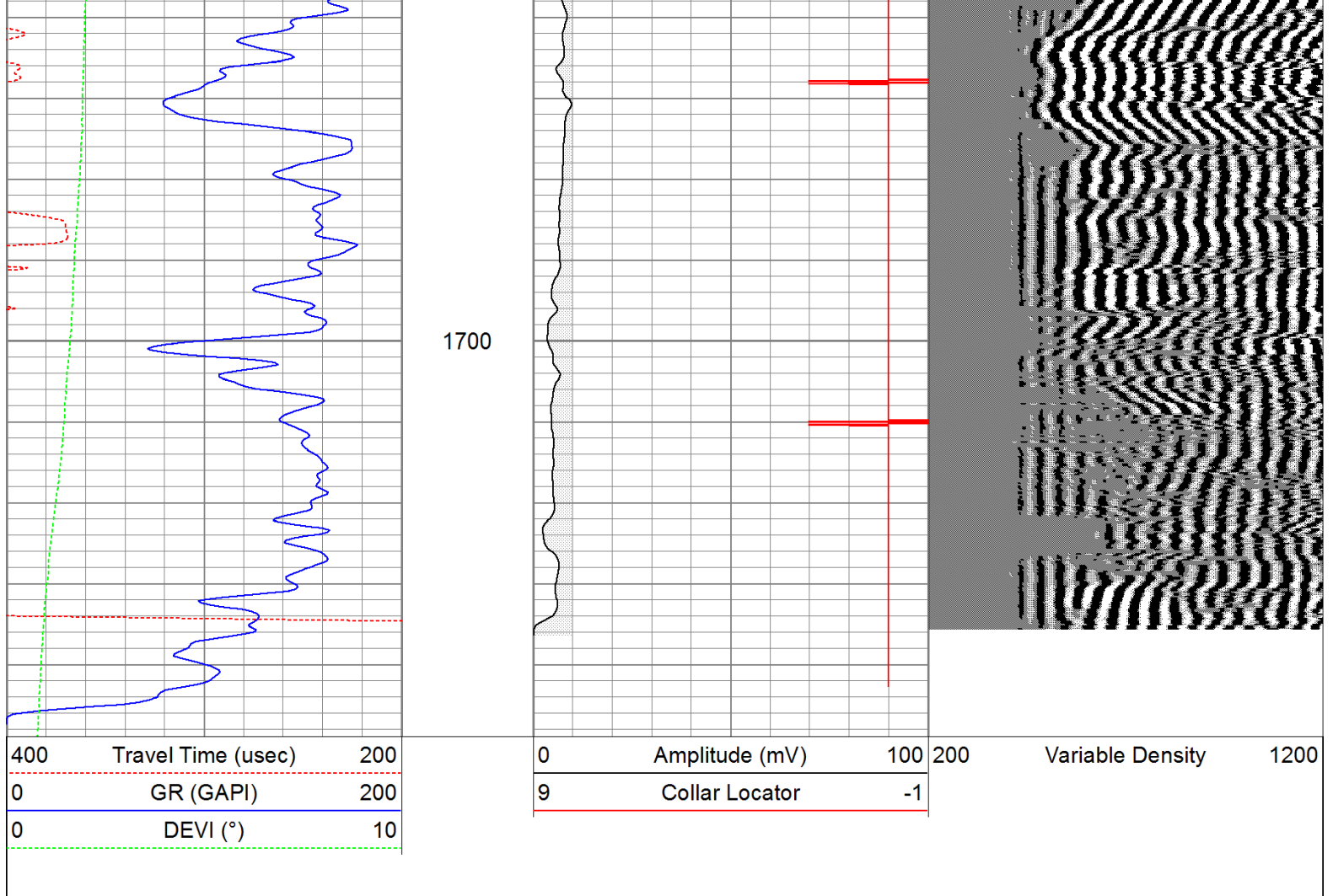




Repeat Pass

Database File: sundancetr6211b.db
 Dataset Pathname: pass2
 Presentation Format: cbldig
 Dataset Creation: Thu Jun 02 14:21:22 2011 by Log Open-Cased 110302
 Charted by: Depth in Feet scaled 1:240





| Calibration Report | | | | |
|---------------------------------|---|------------|----------|---------------|
| Database File: | sundancetr6211b.db | | | |
| Dataset Pathname: | pass2 | | | |
| Dataset Creation: | Thu Jun 02 14:21:22 2011 by Log Open-Cased 110302 | | | |
| Gamma Ray Calibration Report | | | | |
| Serial Number: | 080616 | | | |
| Tool Model: | 275D_INC | | | |
| Performed: | Wed May 04 17:31:09 2011 | | | |
| Calibrator Value: | 200.0 | GAPI | | |
| Background Reading: | 50.0 | cps | | |
| Calibrator Reading: | 250.0 | cps | | |
| Sensitivity: | 1.0000 | GAPI/cps | | |
| Inclinometer Calibration Report | | | | |
| Performed: | Wed May 04 17:39:54 2011 | | | |
| | Low Read. | High Read. | Low Ref. | High Ref. |
| X Accelerometer | -3585.20 | 3595.40 | -1.00 | 1.00 gee |
| Y Accelerometer | -3619.40 | 3520.00 | -1.00 | 1.00 gee |
| Z Accelerometer | | | | |

Cement Bond Log Calibration Report

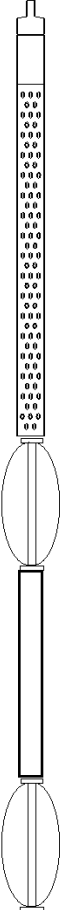
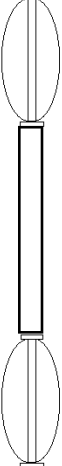
Serial Number: 081024
 Tool Model: PROBEDIITALCBL
 Performed: Thu Jun 02 14:11:23 2011

Depth: 45.379 ft
 Casing Diameter: 5.5 in

3' Spacing 5' Spacing

Signal Zero: 0 mV
 Calibrated Amplitude: 85 mV
 Reading at Signal Zero: -0.00598145 V
 Reading in Free Pipe: 1.673 V

Gain: 50.6259 68.5462
 Offset: 0.302816 0.430087

| Sensor | Offset (ft) | Schematic | Description | Len (ft) | OD (in) | Wt (lb) |
|--------|-------------|---|--|----------|---------|---------|
| | | | None | 0.75 | 1.50 | 5.00 |
| WVF3 | 14.54 |  | CBL-PROBEDIITALCBL (081024) PROBE DIGITAL CBL | 8.75 | 2.75 | 106.50 |
| WVF5 | 13.54 | | | | | |
| | | | Tekco | 2.90 | 1.69 | 5.00 |
| CCL | 6.40 | | | | | |
| ACCX | 4.73 |  | GR-275D_INC (080616) 2-3/4" GR-CCL with Inclination | 4.50 | 2.75 | 50.00 |
| ACCY | 4.73 | | | | | |
| ACCZ | 4.73 | | | | | |
| GR | 3.73 | | | | | |
| | | | Tekco | 2.90 | 1.69 | 5.00 |

Dataset: sundancetr6211b.db: field/well/run1/pass2
 Total Length: 19.79 ft
 Total Weight: 171.50 lb
 O.D. 2.75 in