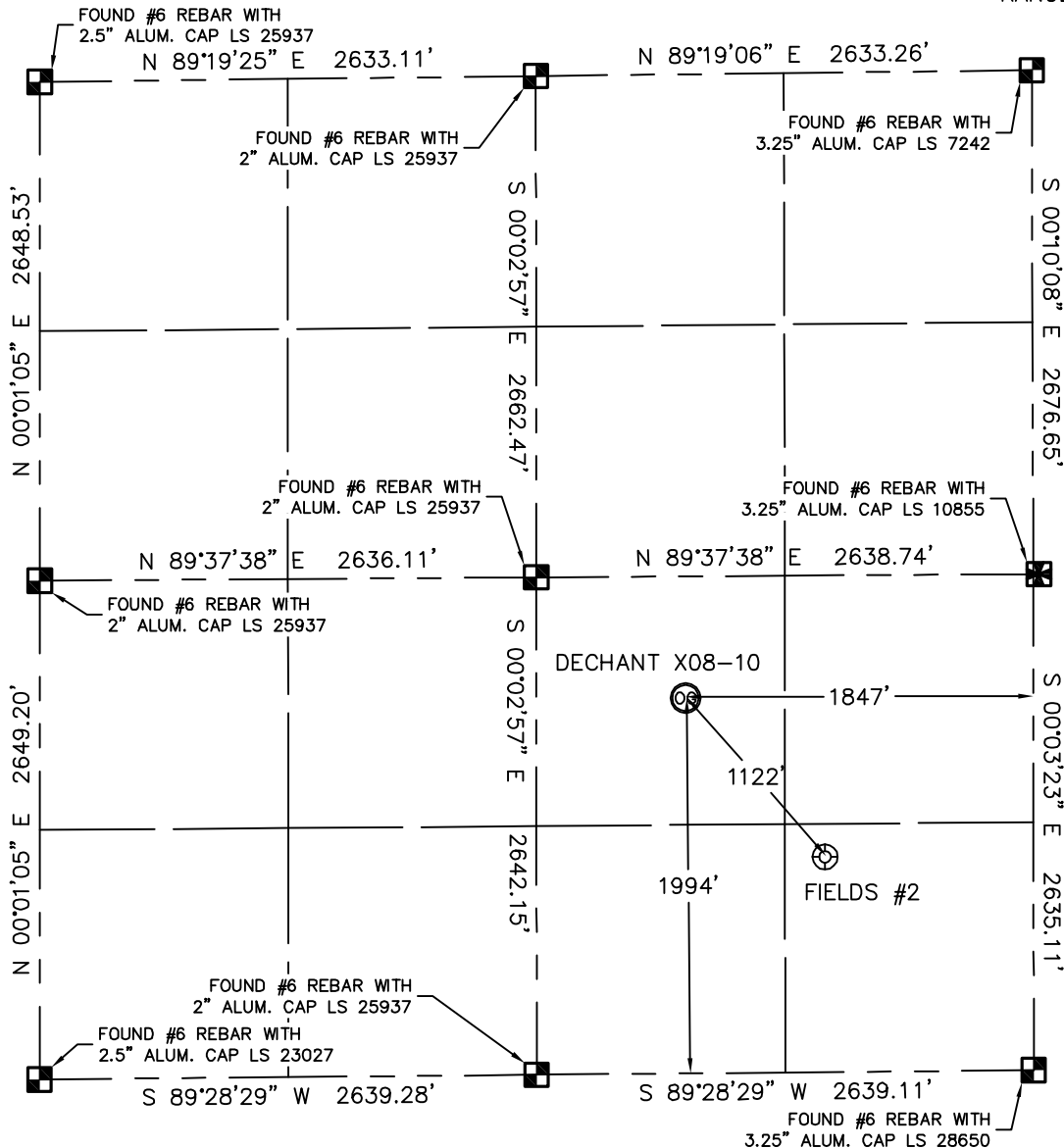


# WELL LOCATION CERTIFICATE

THIS MAP DOES NOT REPRESENT A BOUNDARY SURVEY

SECTION: 8  
TOWNSHIP: 2N  
RANGE: 65W



In accordance with a request from Kate Miller with Noble Energy Inc., Lat40°, Inc. has calculated the surface location of the DECHANT X08-10 to be 1994' from the SOUTH line and 1847' from the EAST line as measured at right angles from the section lines of Section 8, Township 2 North, Range 65 West of the Sixth Principal Meridian, County of Weld, State of Colorado.

I hereby state that this Well Location Certificate was prepared by me, or under my direct supervision, for and on behalf of Noble Energy Inc.. That this is not a Land Survey Plat or an Improvement Survey Plat, and that it is not to be relied upon for establishment of fence, building, or other future improvement lines.

## NOTE:

- 1) Bearings shown are Grid Bearings of the Colorado State Plane Coordinate System, North Zone, North American Datum 1983/2007. The lineal dimensions as contained herein are based upon the "U.S. Survey Foot."
- 2) Ground elevations are based on an observed GPS elevation (NAVD 1988 DATUM).
- 3) NEAREST EXISTING WELL: FIELDS #2, 1122' SOUTHEAST
- 4) IMPROVEMENTS: See VISIBLE IMPROVEMENTS exhibit for all visible improvements within 400' of the disturbed area.
- 5) SURFACE USE: CROP DRYLAND (PIVOT HAS BEEN REMOVED)

## SURFACE LOCATION

(CALCULATED)  
LATITUDE: 40.15143°N  
LONGITUDE: 104.68494°W  
PDOP: <6  
ELEV: 4908+/-  
1/4, 1/4: NW1/4SE1/4  
NEAREST PROPERTY LINE: 646' NORTH

## NOTE

According to Colorado law, you must commence any legal action based upon any defect in this W.L.C. within three years after you discover such defect. In no event, may any action based upon any defect in this survey be commenced more than ten years after the date of the certificate shown hereon. (13-80-105 C.R.S.)

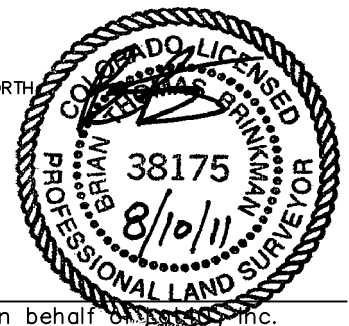
## LEGEND



= ALIQUOT MONUMENT AS DESCRIBED



= CALCULATED POSITION



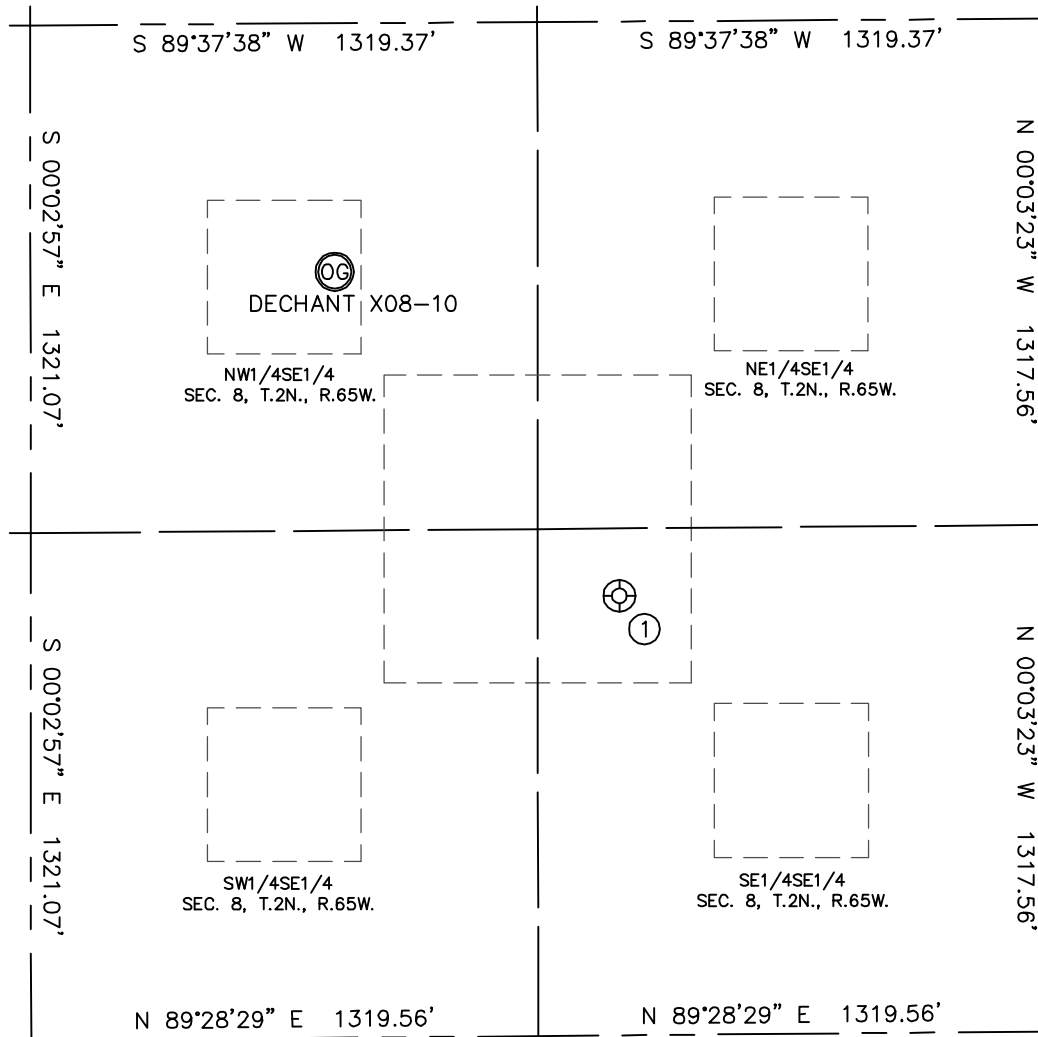
Brian T. Brinkman—On behalf of Lat40°, Inc.  
Colorado Licensed Professional  
Land Surveyor No. 38175

PROJECT#: 2010010

# SITE SKETCH

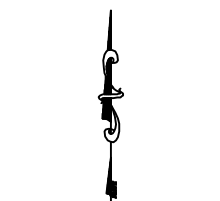
DECHANT X08-10

SECTION: 8  
TOWNSHIP: 2N  
RANGE: 65W



①

FIELDS #2  
SE1/4SE1/4  
1144' FSL  
1107' FEL  
LAT-40.14910°N  
LONG-104.68232°W  
PDOP: 2.1  
ELEV: 4910



1"=500'