

Company	Pioneer Natural Resources	Company	Pioneer Natural Resources
Well	Wildfire 41-10	Well	Wildfire 41-10
Field	Purgatoire River	Field	Purgatoire River
County	Las Animas	County	Las Animas
State	Colorado	State	Colorado
Location:	APL # : 05-071-09781-00	Other Services	CDNL
SEC 10 TWP 33S RGE 66W	441' FNL & 757' FEL	Elevation	
Permanent Datum	Ground Level	Elevation	7332'
Log Measured From	Kelly Bushing 4' AGL	D.F. -----	
Drilling Measured From	Kelly Bushing	G.L. 7332'	
Date	5-27-11		
Run Number	One		
Depth Driller	2086'		
Depth Logger	2082'		
Bottom Logged Interval	2080'		
Top Log Interval	Surface Casing		
Casing Driller	8 5/8" @ 507'		
Casing Logger	507'		
Bit Size	7 7/8"		
Type Fluid in Hole	Water		
Density / Viscosity	///		
pH / Fluid Loss	///		
Source of Sample	///		
Rm @ Meas. Temp	///		
Rmf @ Meas. Temp	///		
Rmc @ Meas. Temp	///		
Source of Rmf / Rmc	///		
Rm @ BHT	///		
Time Circulation Stopped	7:00 P.M.		
Time Logger on Bottom	11:45 P.M.		
Maximum Recorded Temperature	110 DEG F		
Equipment Number	T590		
Location	Trinidad		
Recorded By	C. Sisneros		
Witnessed By	Mr. Bill Vigil		

<<< Fold Here >>>

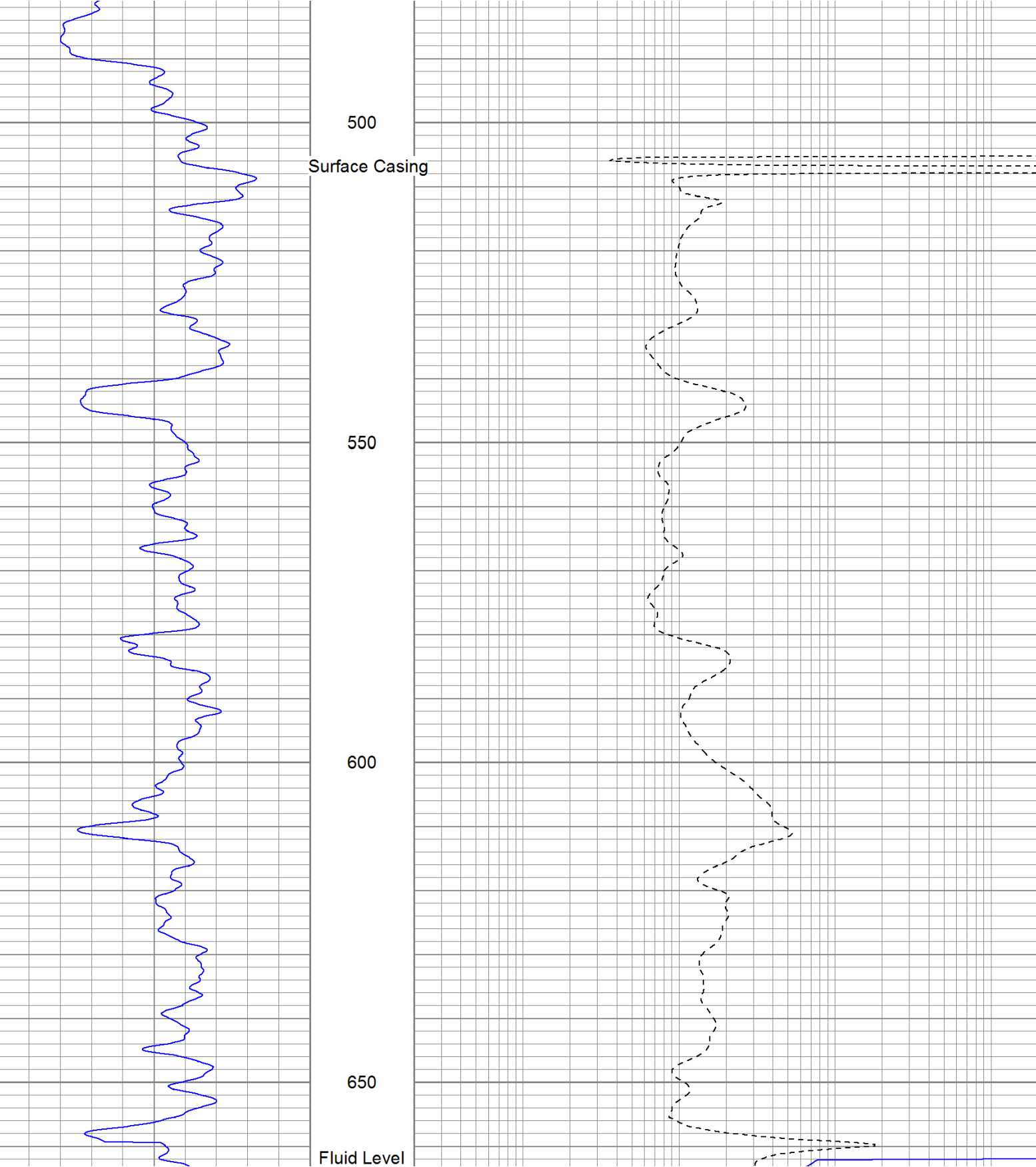
All interpretations are opinions based on inferences from electrical or other measurements and we cannot and do not guarantee the accuracy or correctness of any interpretation, and we shall not, except in the case of gross or willful negligence on our part, be liable or responsible for any loss, costs, damages, or expenses incurred or sustained by anyone resulting from any interpretation made by any of our officers, agents or employees. These interpretations are also subject to our general terms and conditions set out in our current Price Schedule.

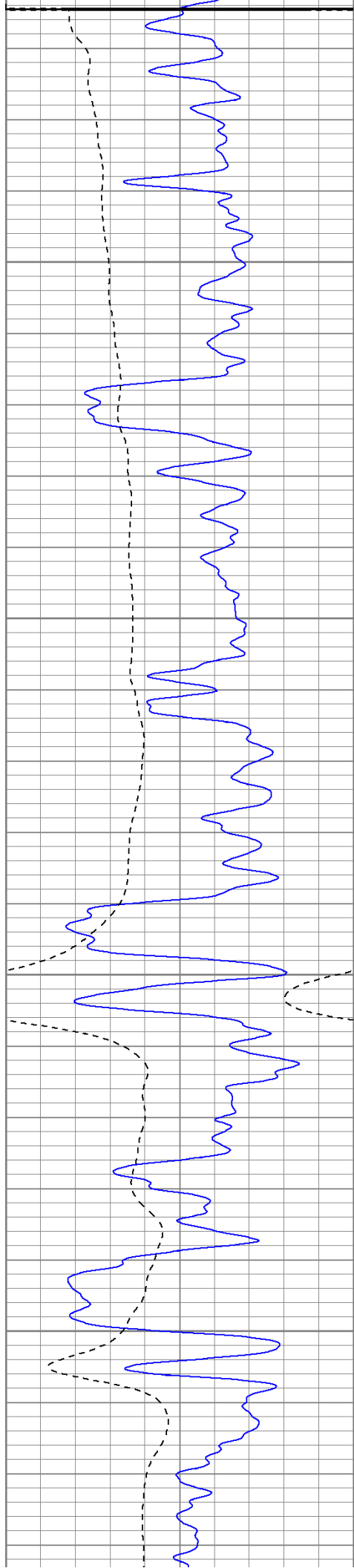
Comments

Directions:

Database File: wildfire.db
Dataset Pathname: pass2.1
Presentation Format: iel
Dataset Creation: Sat May 28 01:34:43 2011 by Calc Open-Cased 110302
Charted by: Depth in Feet scaled 1:240

0	GR (GAPI)	200	0.2	DIR (Ohm-m)	2000
-200	SP (mV)	0	0.2	SN (Ohm-m)	2000



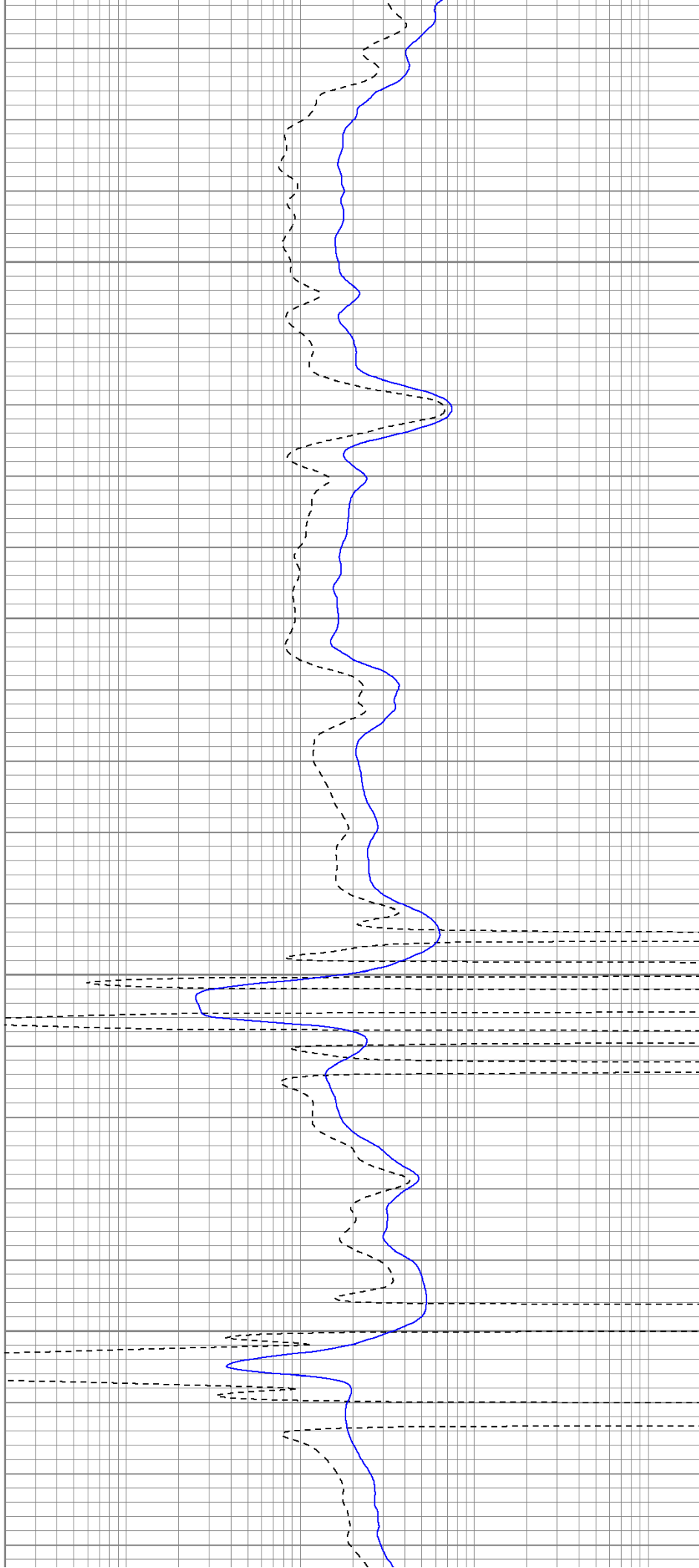


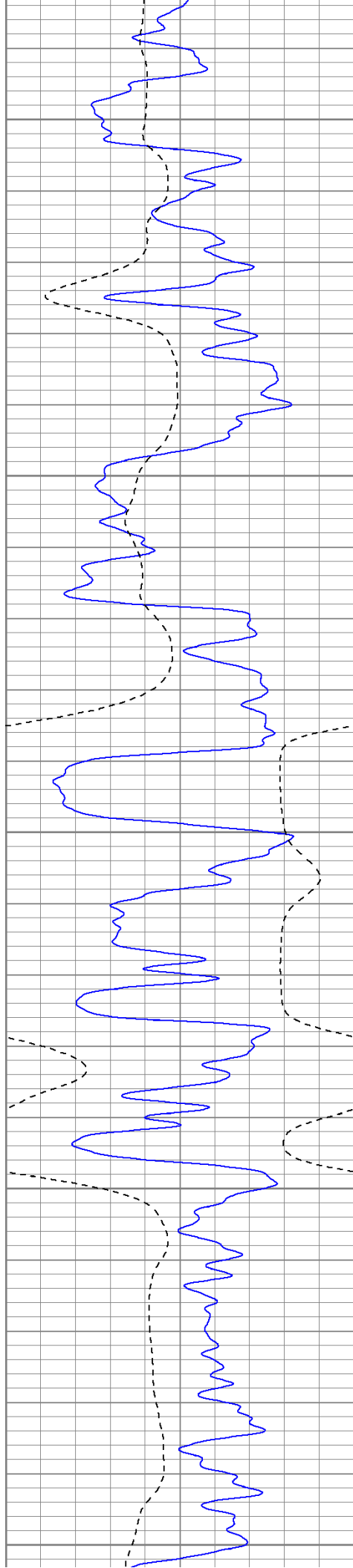
700

750

800

850





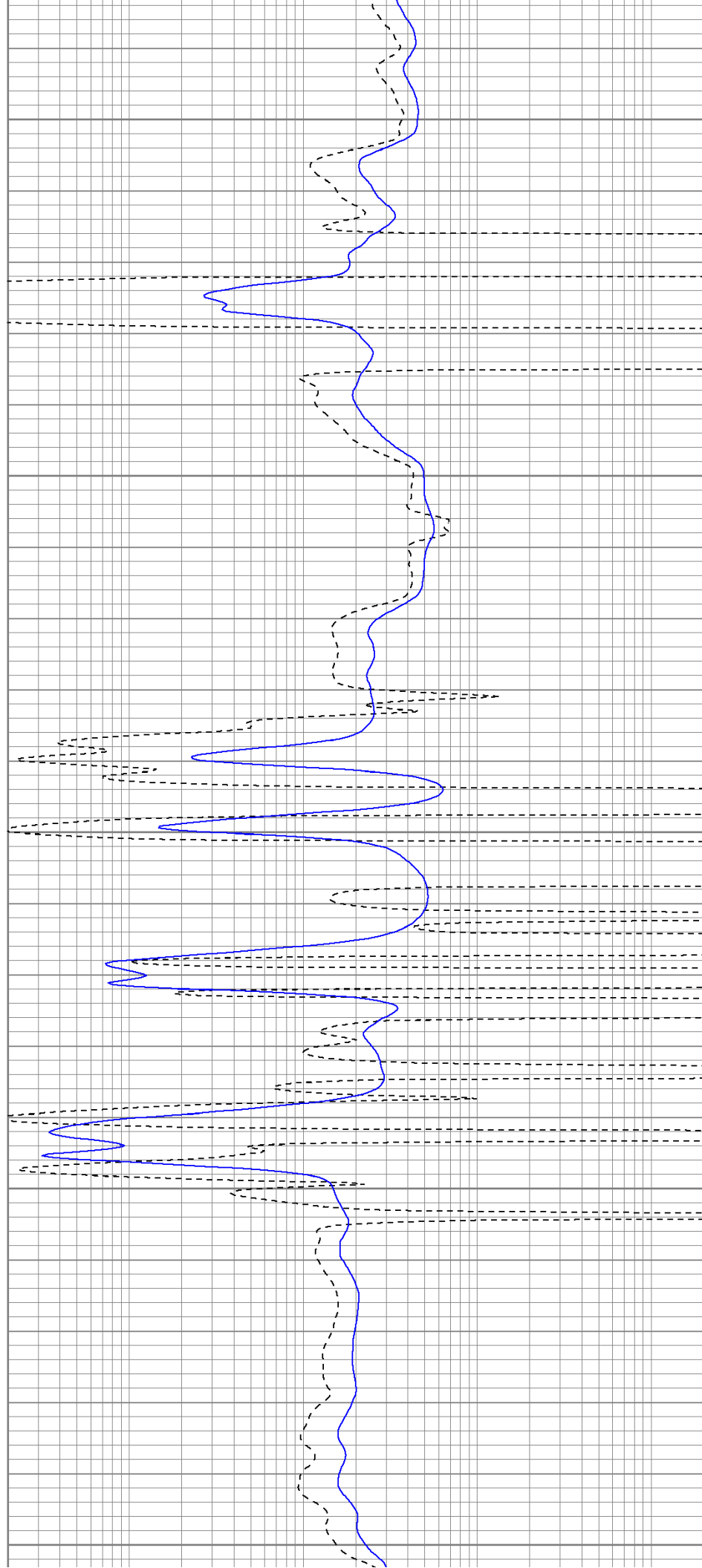
900

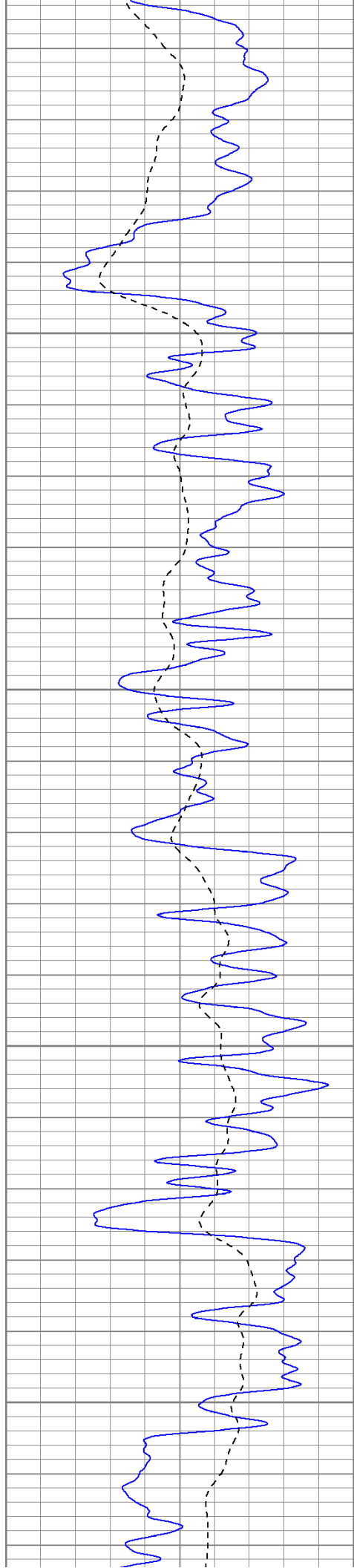
950

1000

1050

1100



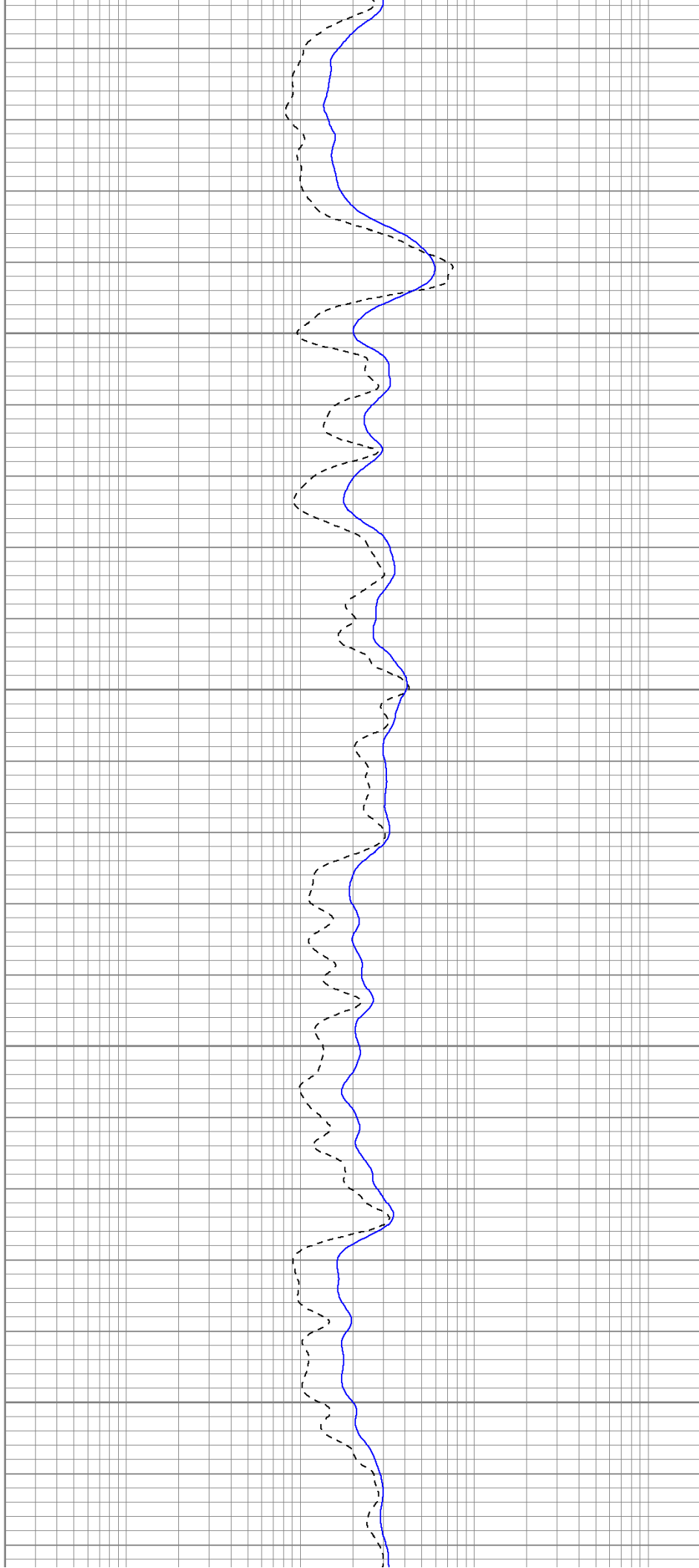


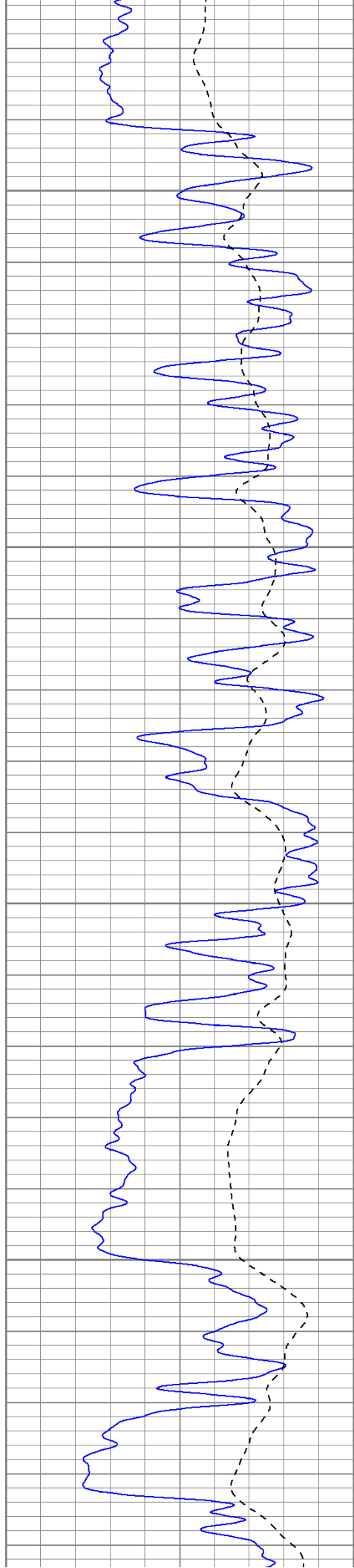
1150

1200

1250

1300



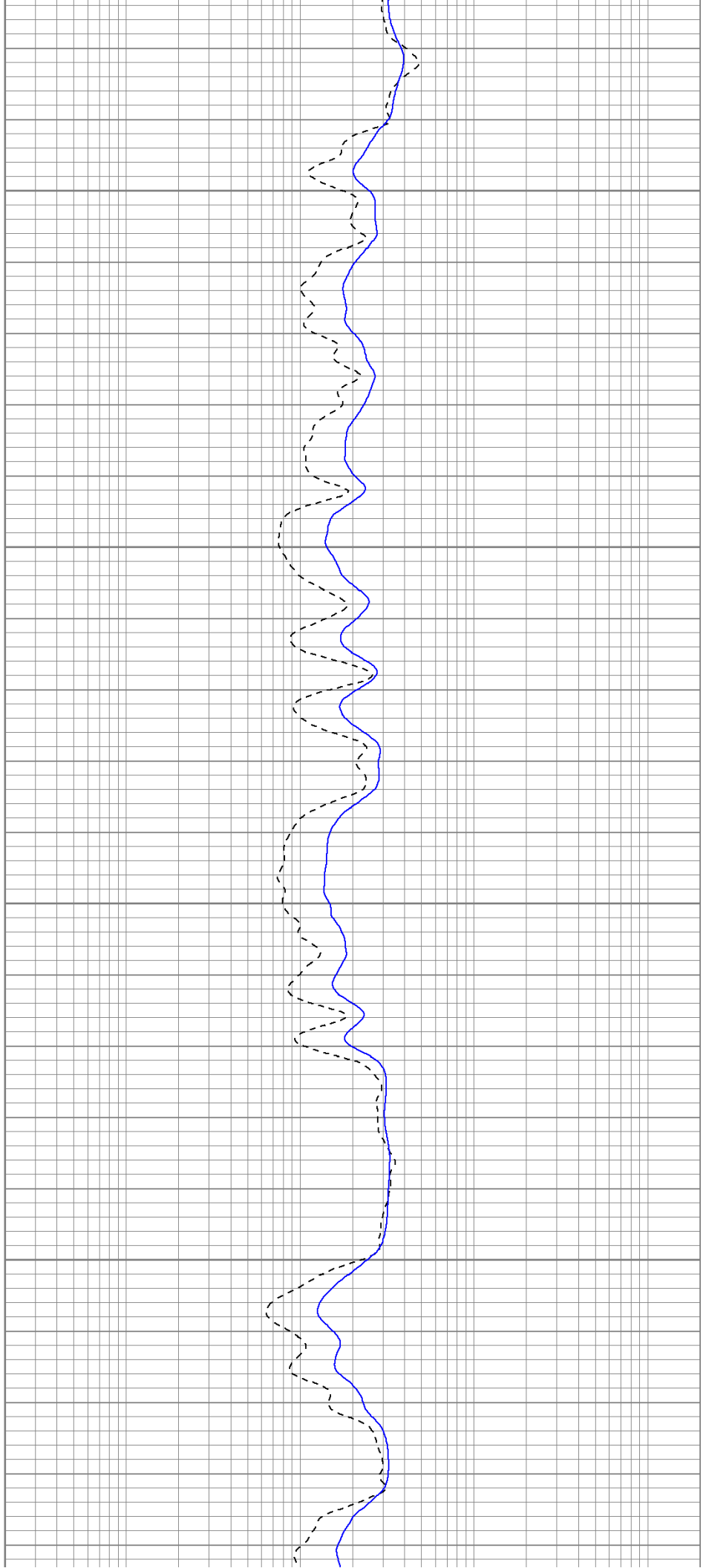


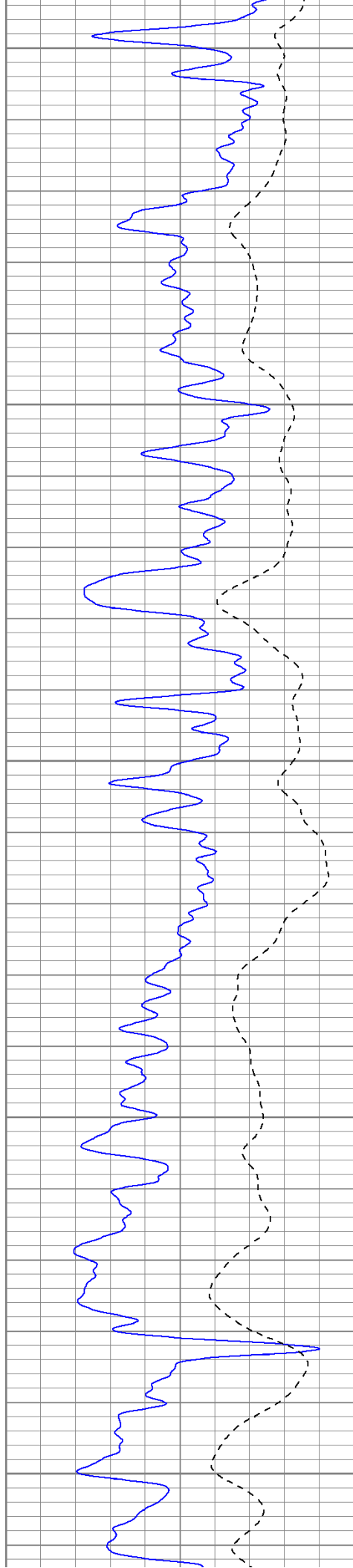
1350

1400

1450

1500





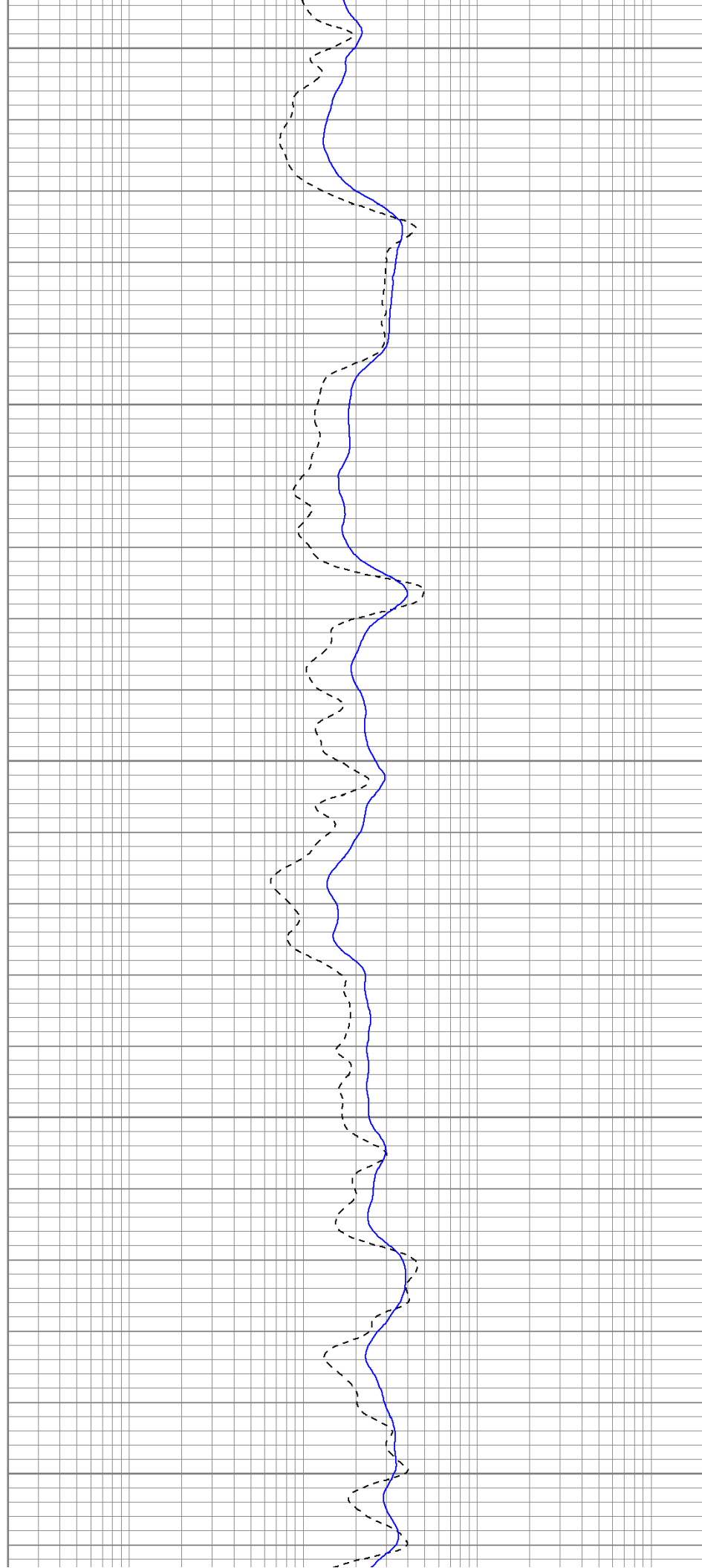
1550

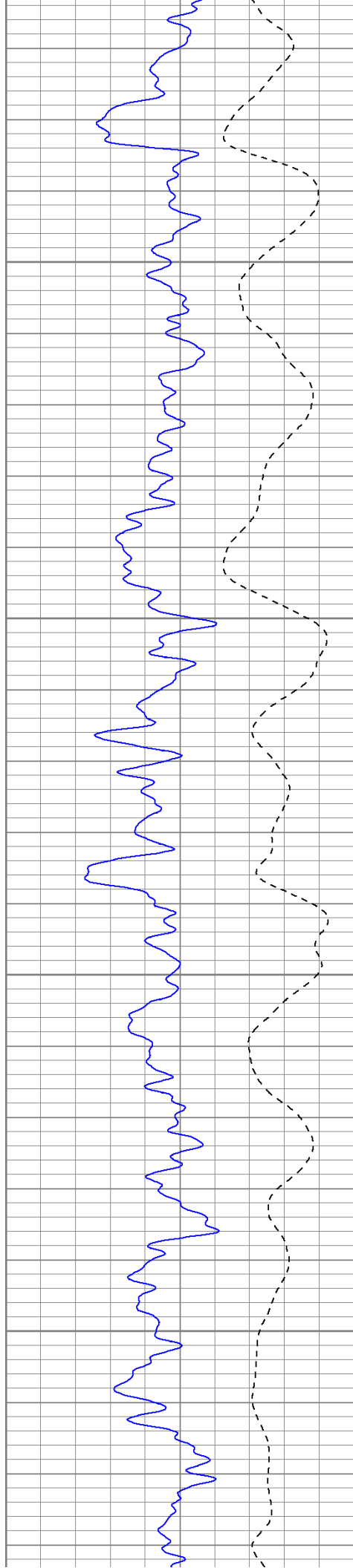
1600

1650

1700

1750



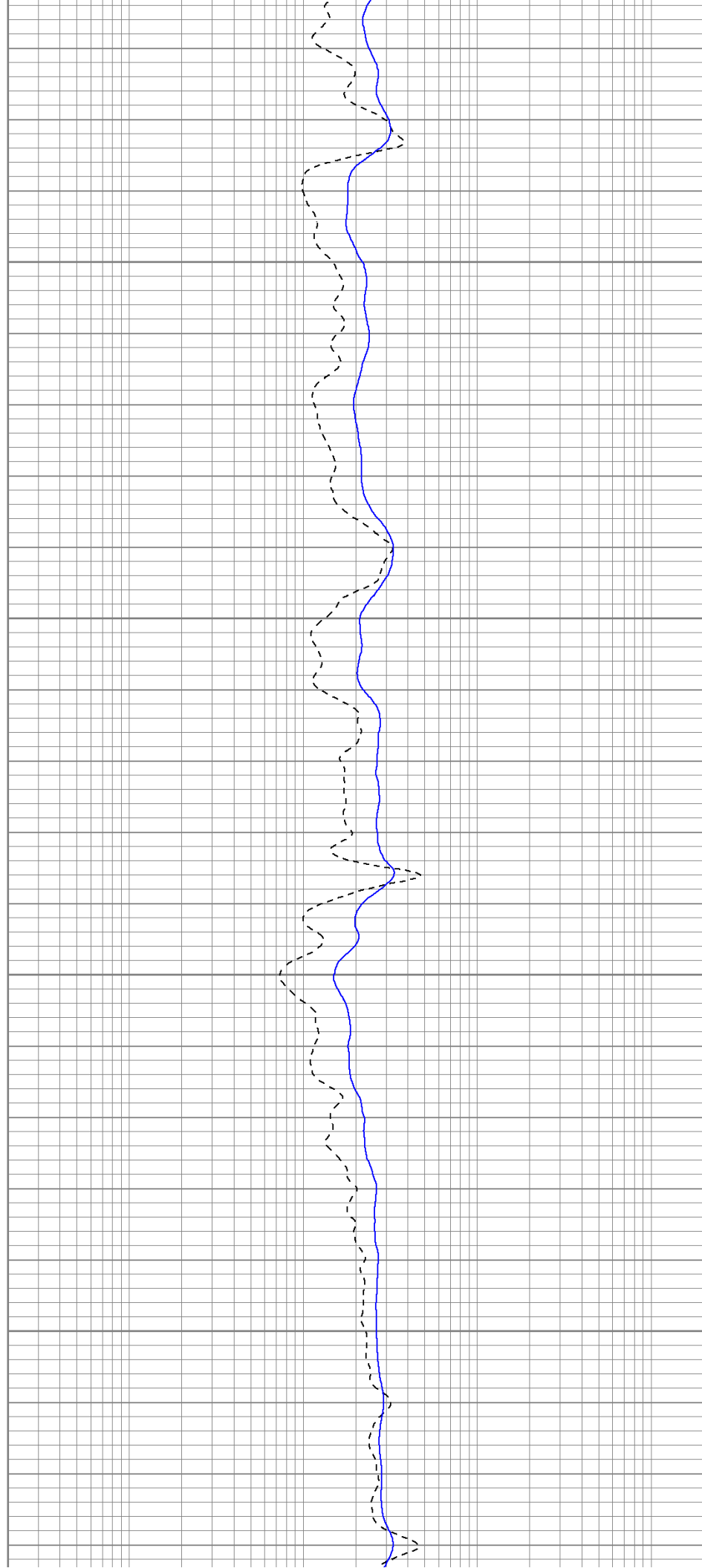


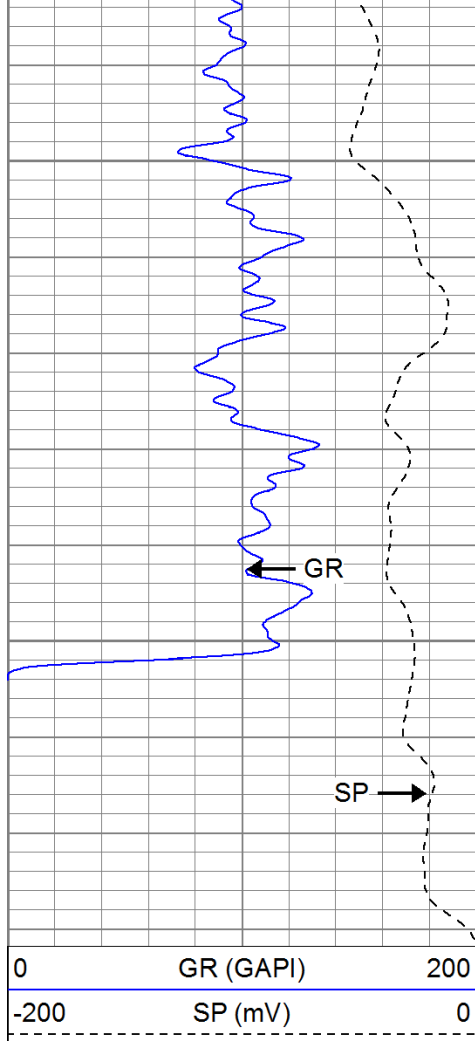
1800

1850

1900

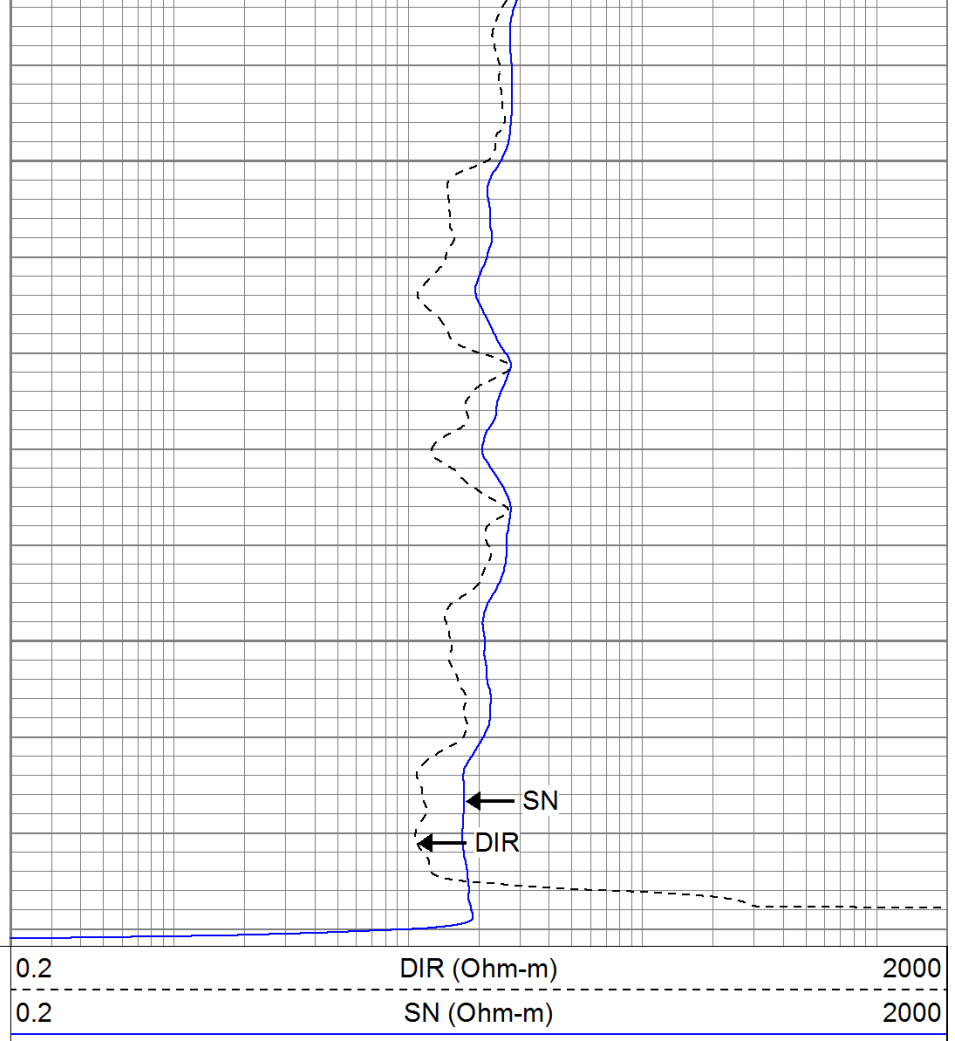
1950





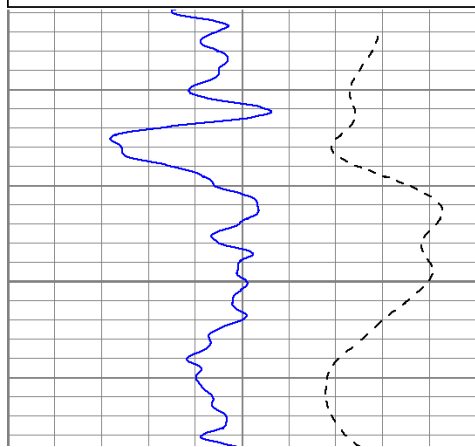
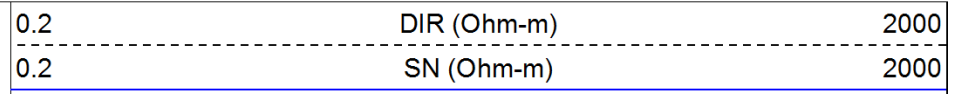
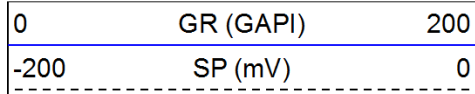
2000

2050

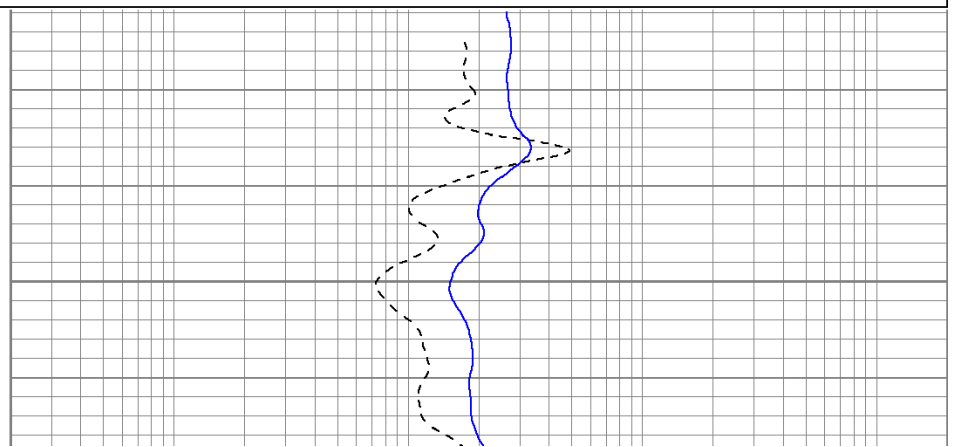


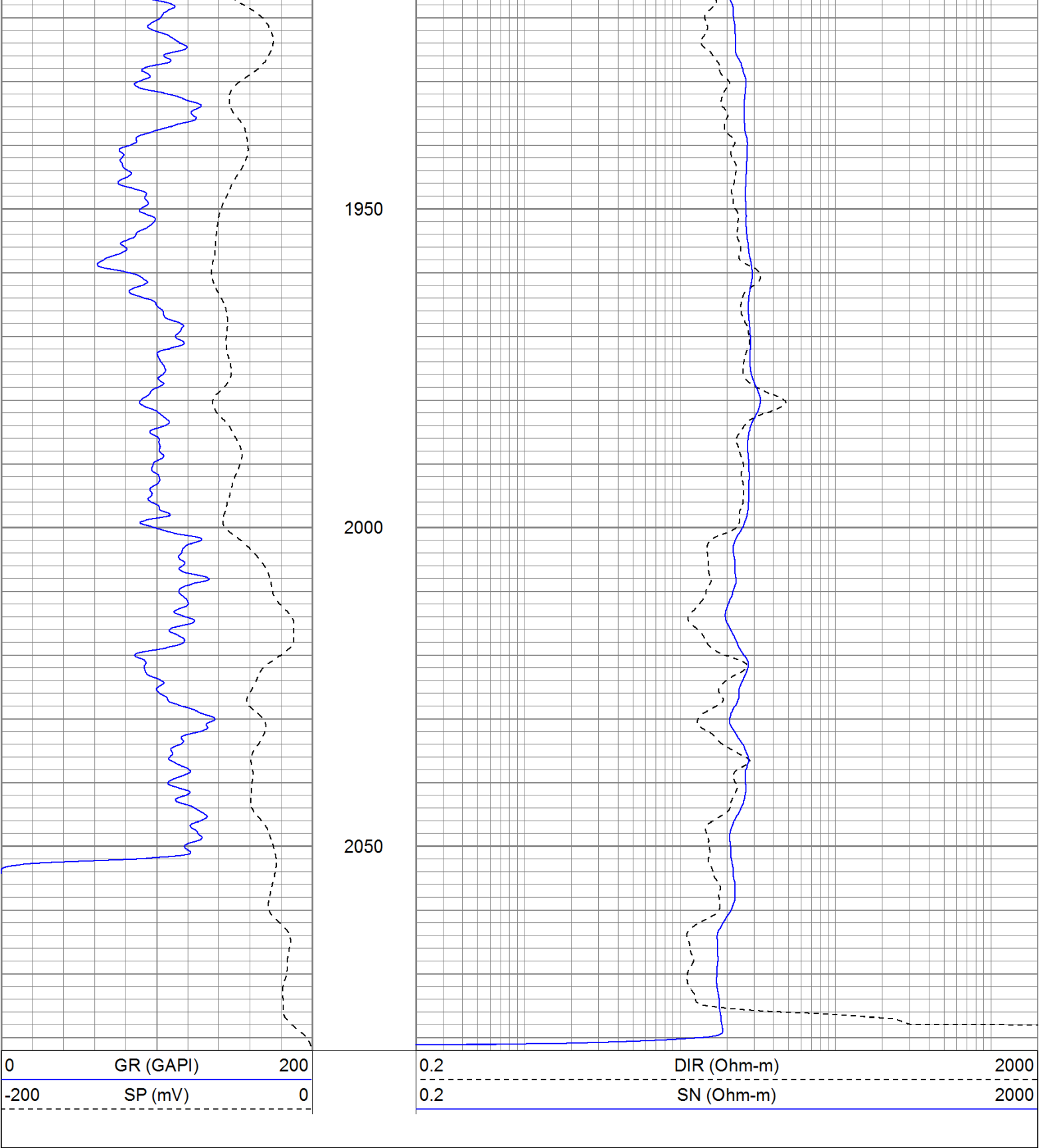
Repeat Pass

Database File: wildfire.db
 Dataset Pathname: pass1.1
 Presentation Format: iel
 Dataset Creation: Sat May 28 01:38:26 2011 by Calc Open-Cased 110302
 Charted by: Depth in Feet scaled 1:240



1900





Calibration Report

Database File: wildfire.db
Dataset Pathname: pass1
Dataset Creation: Fri May 27 23:58:08 2011 by Log Open-Cased 110302

Induction Tool Calibration Report

Serial Number: 701
Tool Model: Probe
Downhole Cal Performed: Fri May 13 12:26:14 2011
Wildfire 27 12 26 14 2011

Surface Calibration:	Air	Loop	
Conductivity Reference:	0.000	500.000	mmho
Conductivity Reading:	0.006	0.644	V
Internal Reference:	Zero	Cal	
Conductivity Reference:	0.000	500.000	mmho
Conductivity Reading:	0.007	0.643	V
Downhole Calibration:	Internal Zero	Internal Cal	
Conductivity Reference:	0.703	499.163	mmho
Conductivity Reading:	0.000	0.000	V
Short Normal Reference:	0.000	20.000	Ohm-m
Short Normal Reading:	0.005	0.214	V
Results:	Gain	Offset	
Loop Conductivity:	783.886	-4.674	
Downhole Correction:	1.000	0.000	
Short Normal Resistivity:	95.281	-0.432	
After Survey Verification	Internal Zero	Internal Cal	
Conductivity Reading:	0.000	0.000	V
Conductivity Result:	0.000	0.000	mmho
Short Normal Reading:	0.000	0.000	V
Short Normal Result:	0.000	0.000	Ohm-m

Compensated Density Calibration Report	
Serial-Model:	901-2.75POH
Source / Verifier:	/
Master Calibration Performed:	Tue May 17 10:06:24 2011
Before Survey Verification Performed:	
After Survey Verification Performed:	

Master Calibration					
	Density		Far Detector	Near Detector	
Magnesium	1.710	g/cc	1001.79	578.48	cps
Aluminum	2.590	g/cc	180.36	300.39	cps
Spine Angle = 69.08			Density/Spine Ratio = 0.479		
	Size		Reading		
Small Ring	8.00	in	2.50	V	
Large Ring	16.00	in	4.57	V	

Before Survey Verification					
	Target		Measured		
		g/cc			g/cc
		g/cc			g/cc
		g/cc			g/cc

After Survey Verification					
	Target		Measured		
		g/cc			g/cc
		g/cc			g/cc
		g/cc			g/cc

Neutron Calibration Report	
Serial Number:	802
Tool Model:	2.75POH
Tool Model:	2.75POH
Tool Model:	2.75POH

Performed: Tue May 03 12:28:21 2011

Calibrator Value: 700 NAPI

Calibrator Reading: 1000 cps

Sensitivity: 0.7 NAPI/cps


Gamma Ray Calibration Report

Serial Number: 801
 Tool Model: 2.75POH
 Performed: Thu May 05 13:29:10 2011

Calibrator Value: 200.0 GAPI

Background Reading: 8.0 cps
 Calibrator Reading: 264.7 cps

Sensitivity: 0.6000 GAPI/cps

Sensor	Offset (ft)	Schematic	Description	Len (ft)	OD (in)	Wt (lb)
GR	29.58		None	0.75	1.50	5.00
			GR-2.75POH (801) Probe 2.75" Probe Open Hole Gamma Ray	3.73	2.75	43.00
NEU	24.04		NEU-2.75POH (802) Probe Epithermal	4.75	2.75	58.00
LSD	16.21		CDL-2.75POH (901) Probe	8.43	2.75	106.00
DCAL	15.94					
SSD	15.69					
DIC	6.24		IEL-Probe (701)	13.46	2.75	93.00
SP	2.25					
SN	1.71					

