

Cement Bond Log

Company	Pioneer Natural Resources
Well	Wildfire 41-10
Field	Purgatorie River
County	Las Animas
State	Colorado
Company	Pioneer Natural Resources
Well	Wildfire 41-10
Field	Purgatorie River
County	Las Animas
State	Colorado
Location:	API #: 05-071-09781-00
SEC 10 TWP 33S RGE 66W	441' FNL & 757' FEL
Permanent Datum Log Measured From	GL KB 4' AGL
Drilling Measured From	KB
Elevation	7332'
Other Services	K.B. 7336' D.F. G.L. 7332'

Date	6-3-11
Run Number	one
Depth Driller	2086'
Depth Logger	2044'
Bottom Logged Interval	2040'
Top Log Interval	Surface
Open Hole Size	7 7/8
Type Fluid	water
Density / Viscosity	///
Max. Recorded Temp.	///
Estimated Cement Top	///
Time Well Ready	R.O.A
Time Logger on Bottom	5:15 P.M.
Equipment Number	T590
Location	Trinidad
Recorded By	C. Sineros
Witnessed By	D. Martinez

Borehole Record				Tubing Record			
Run Number	Bit	From	To	Size	Weight	From	To
Casing Record		Size		Wgt/Ft		Top	Bottom
Surface String		8 5/8"					507'
Prot. String							
Production String		5 1/2"					TD
Liner							

<<< Fold Here >>>

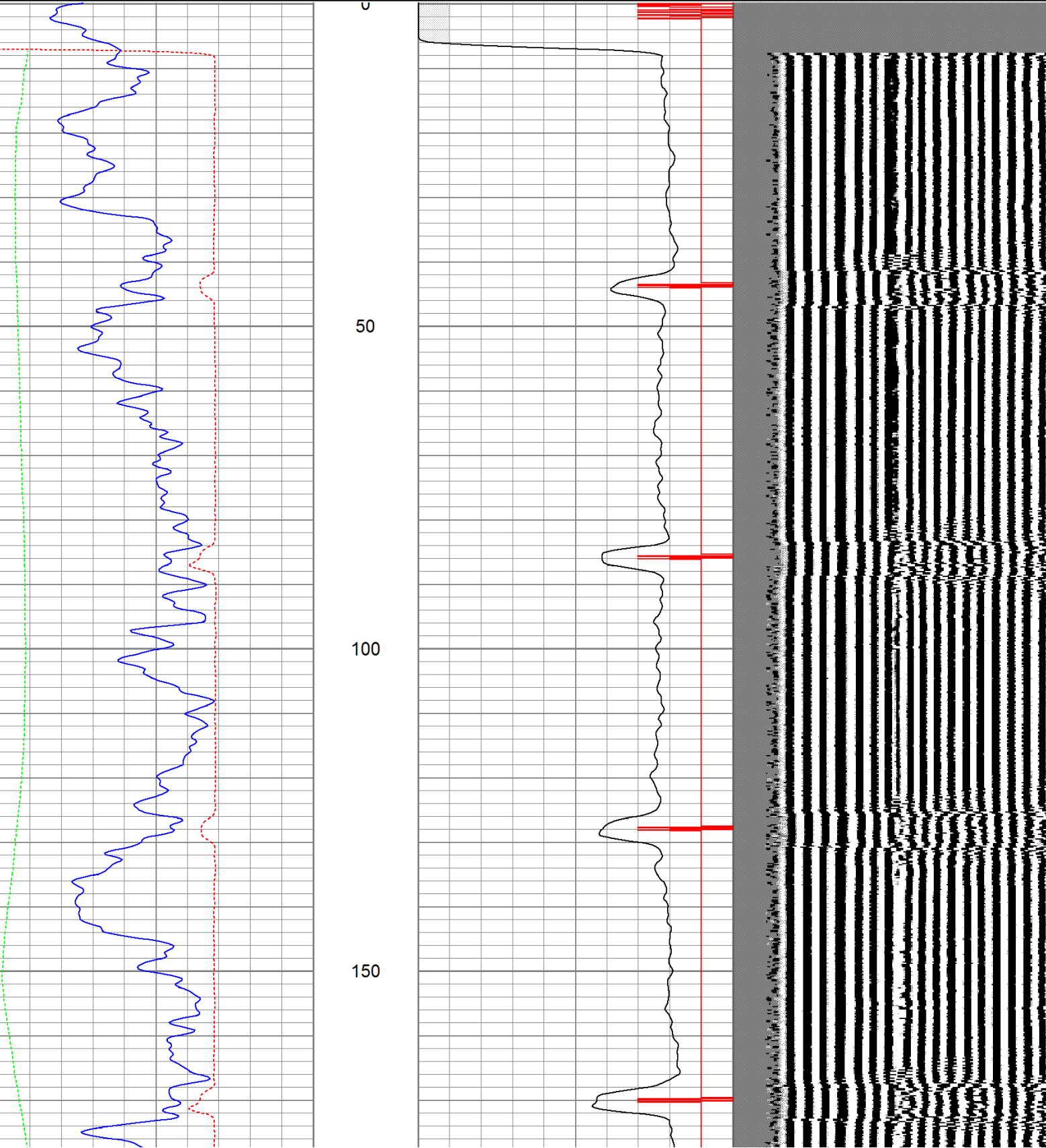
All interpretations are opinions based on inferences from electrical or other measurements and we cannot and do not guarantee the accuracy or correctness of any interpretation, and we shall not, except in the case of gross or willful negligence on our part, be liable or responsible for any loss, costs, damages, or expenses incurred or sustained by anyone resulting from any interpretation made by any of our officers, agents or employees. These interpretations are also subject to our general terms and conditions set out in our current Price Schedule.

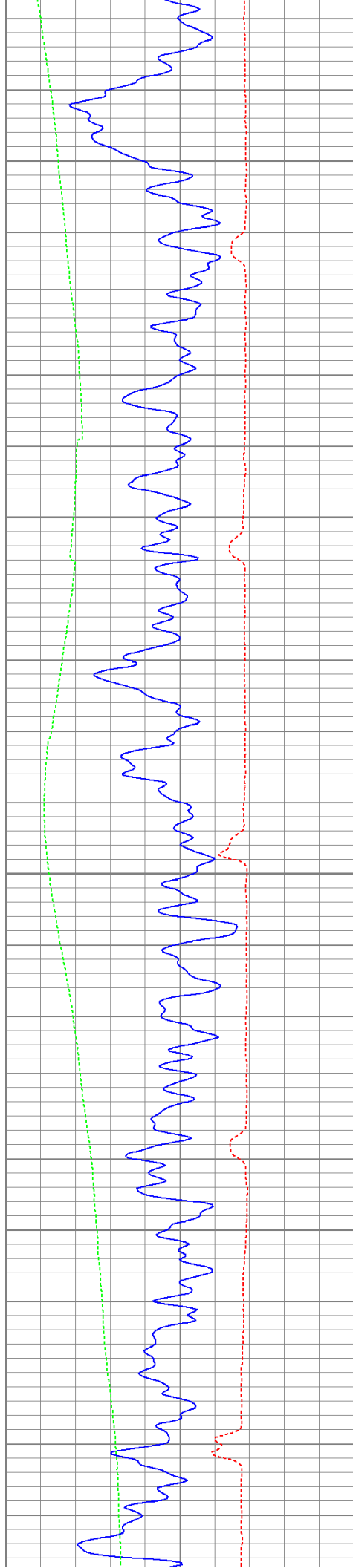
Comments

Directions:
Sarcillo to La Garita (C.R. 30.1), turn right on Aspen Lane,
follow road and turn right on Lark Bunting Lane, first left, dead end on location.

Database File: wildfire6311b.db
Dataset Pathname: pass2.1
Presentation Format: cbldig
Dataset Creation: Fri Jun 03 18:44:17 2011 by Calc Open-Cased 110302
Charted by: Depth in Feet scaled 1:240

400	Travel Time (usec)	200	0	Amplitude (mV)	100	200	Variable Density	1200
0	GR (GAPI)	200	9	Collar Locator	-1			
0	DEVI (°)	10						



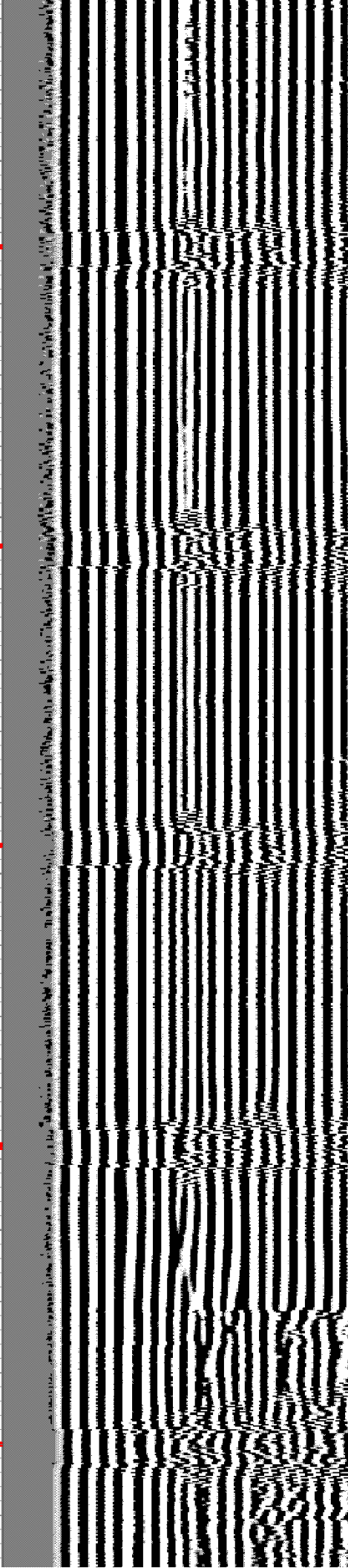


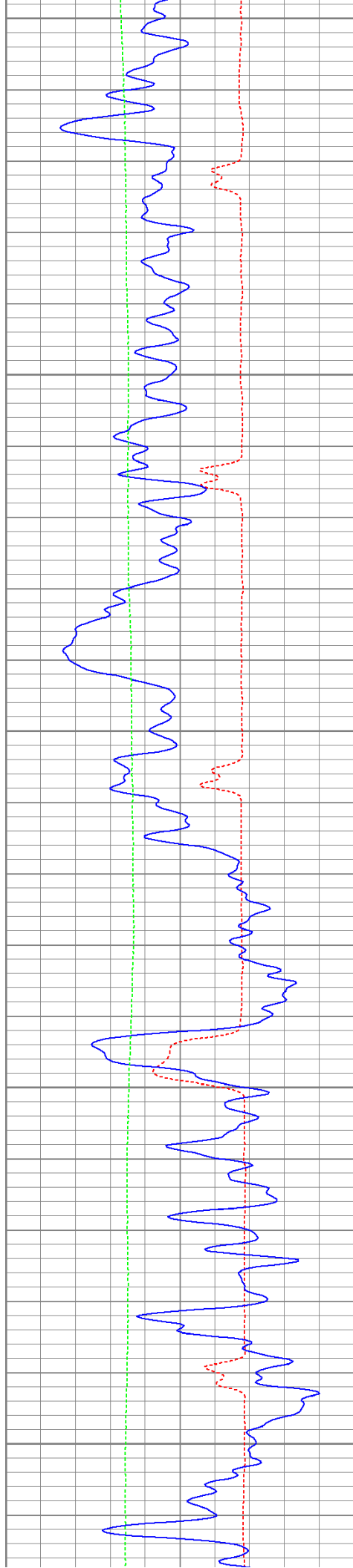
200

250

300

350





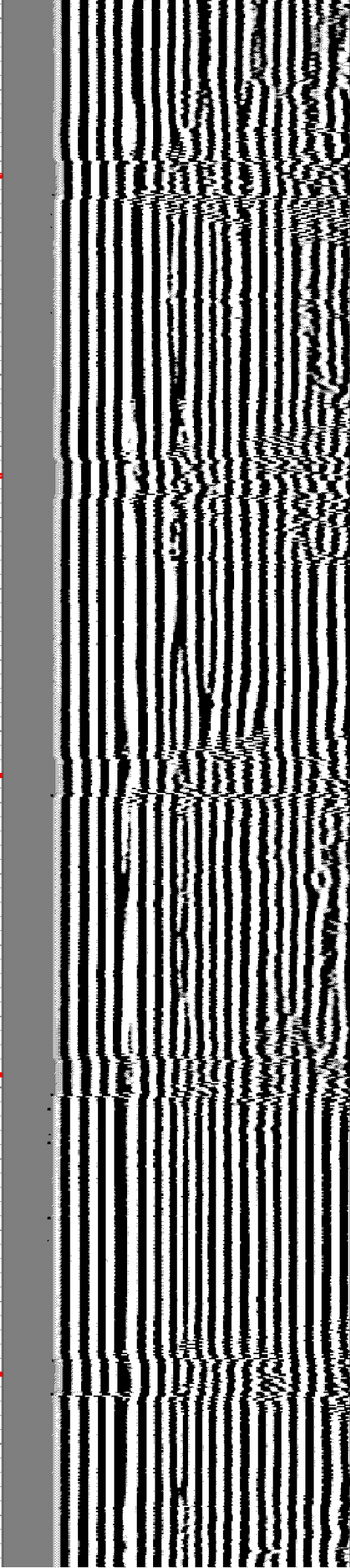
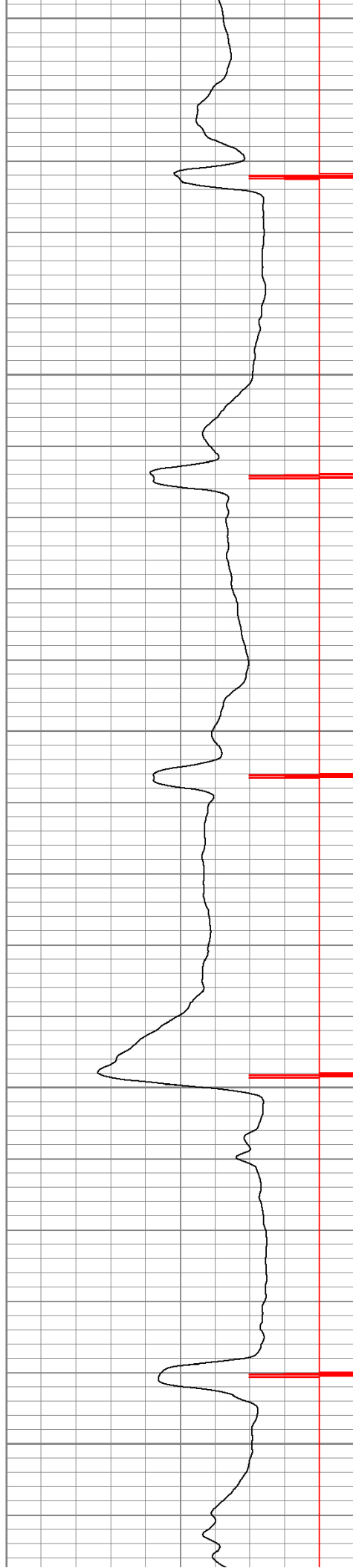
400

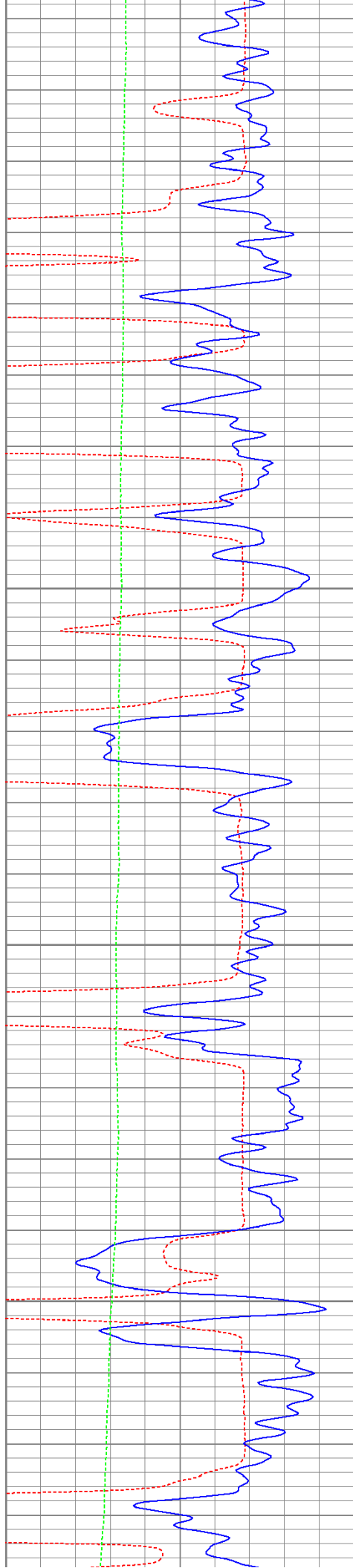
450

500

550

600



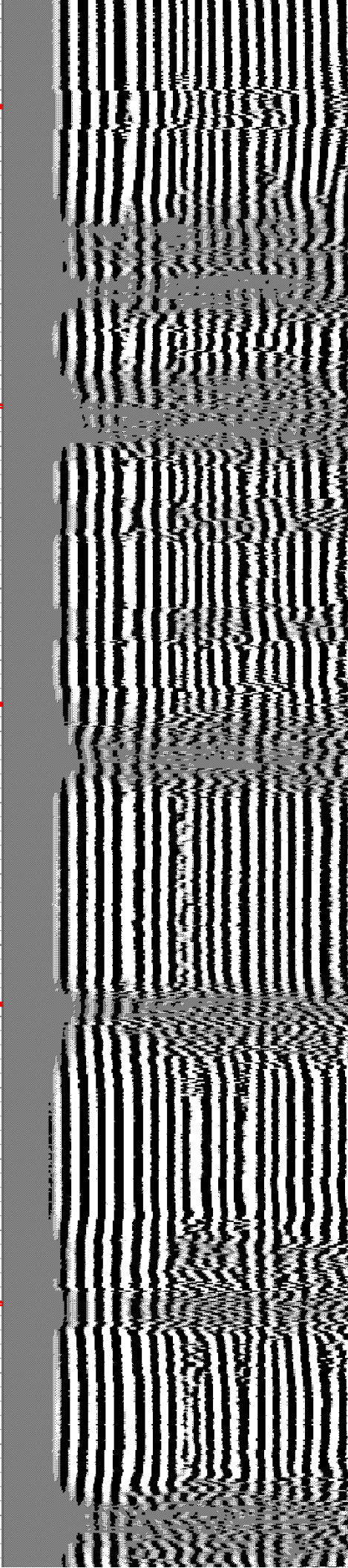
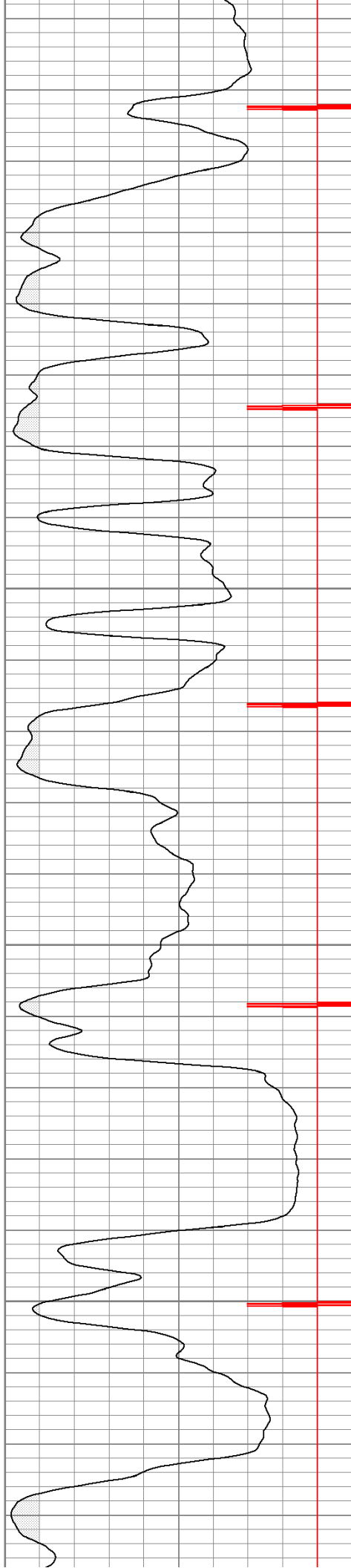


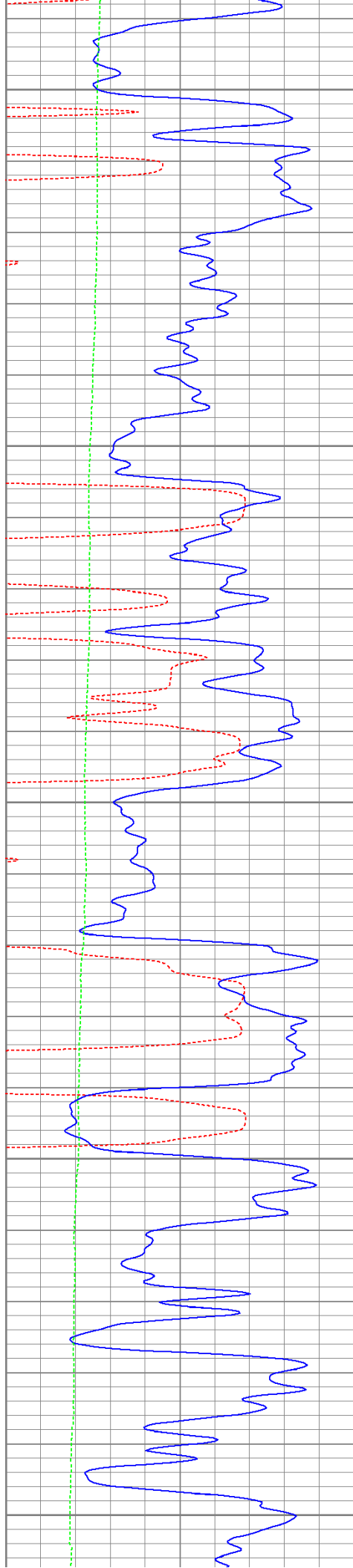
650

700

750

800





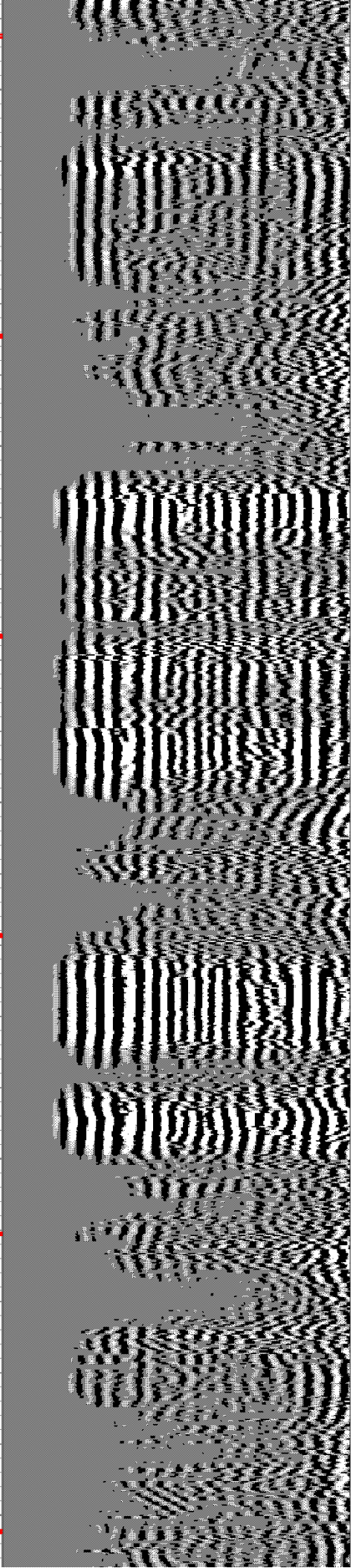
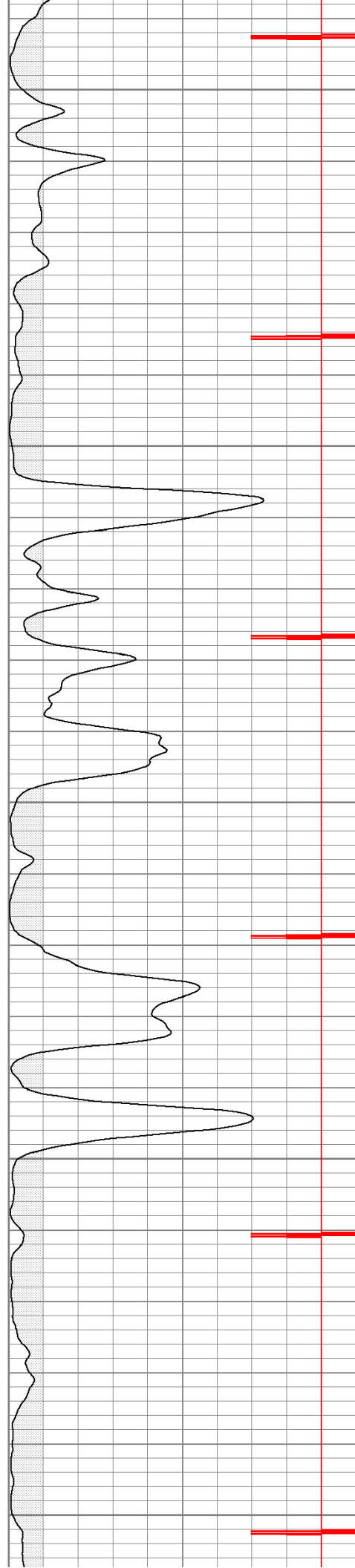
850

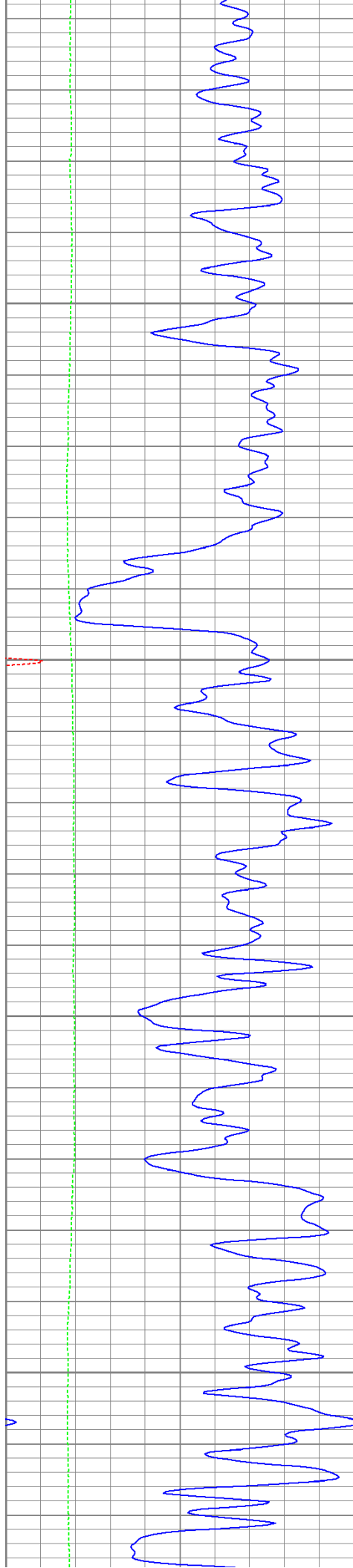
900

950

1000

1050



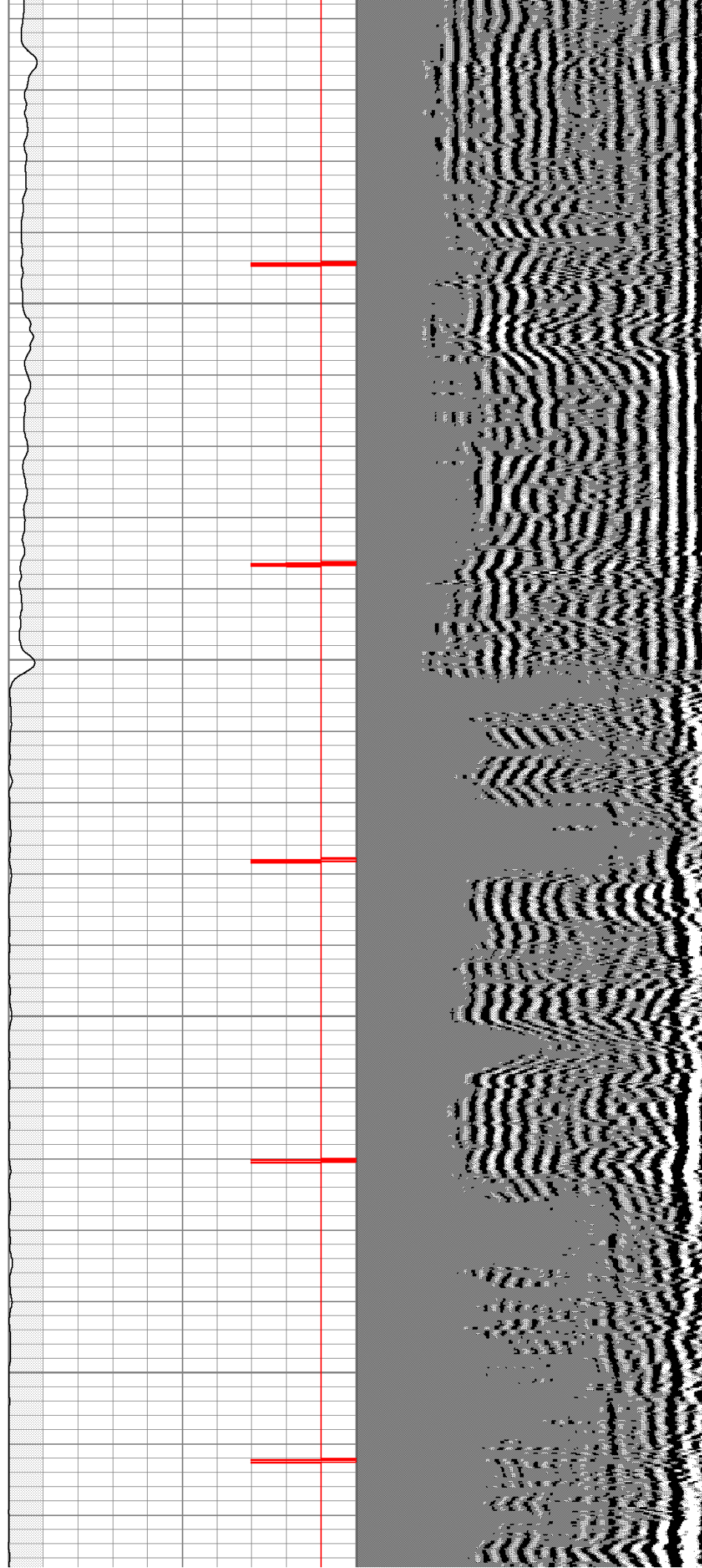


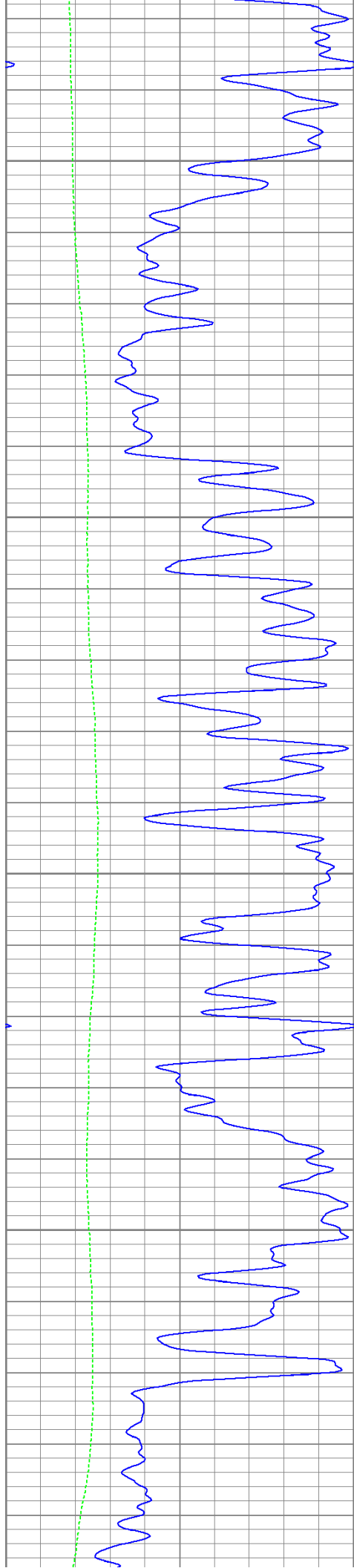
1100

1150

1200

1250



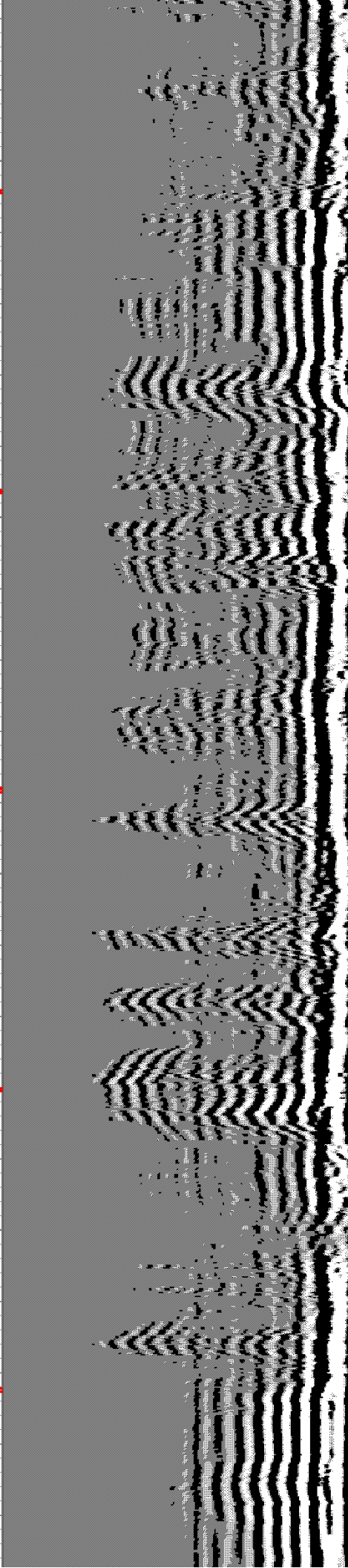
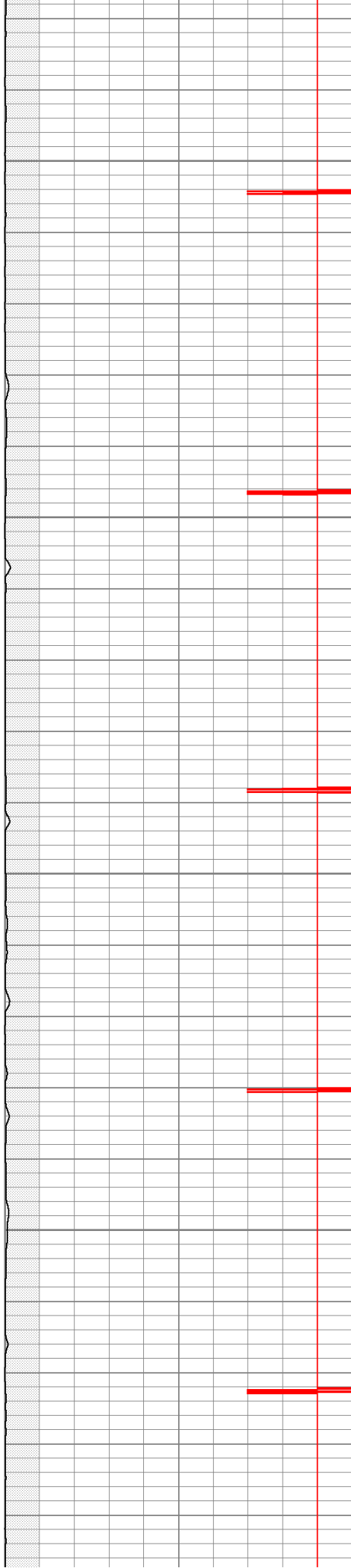


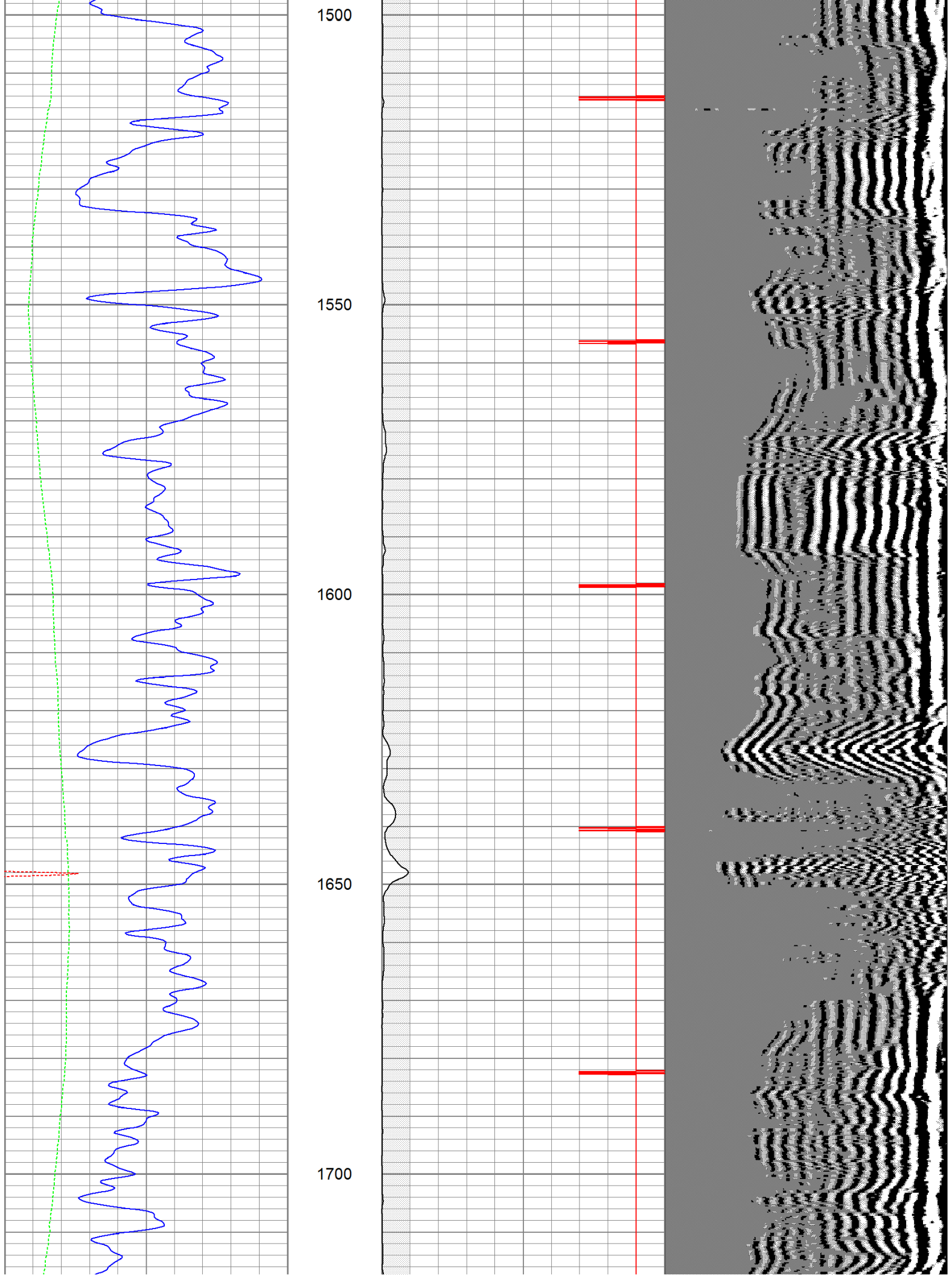
1300

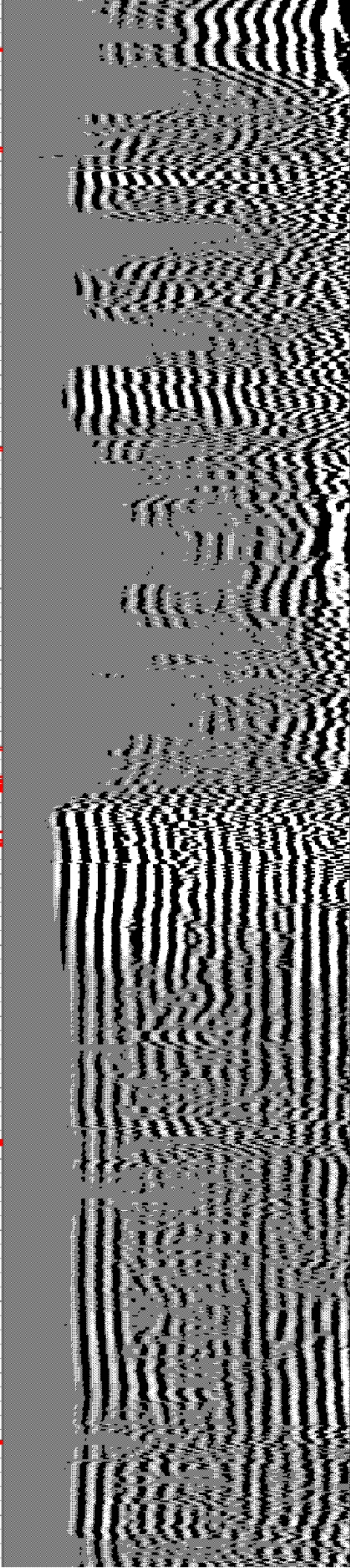
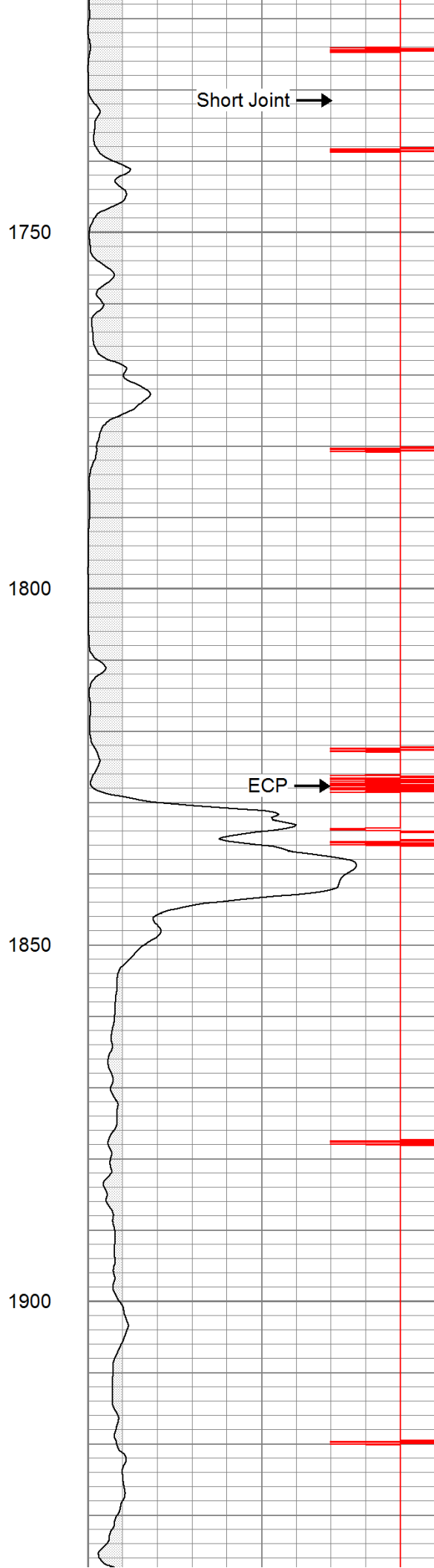
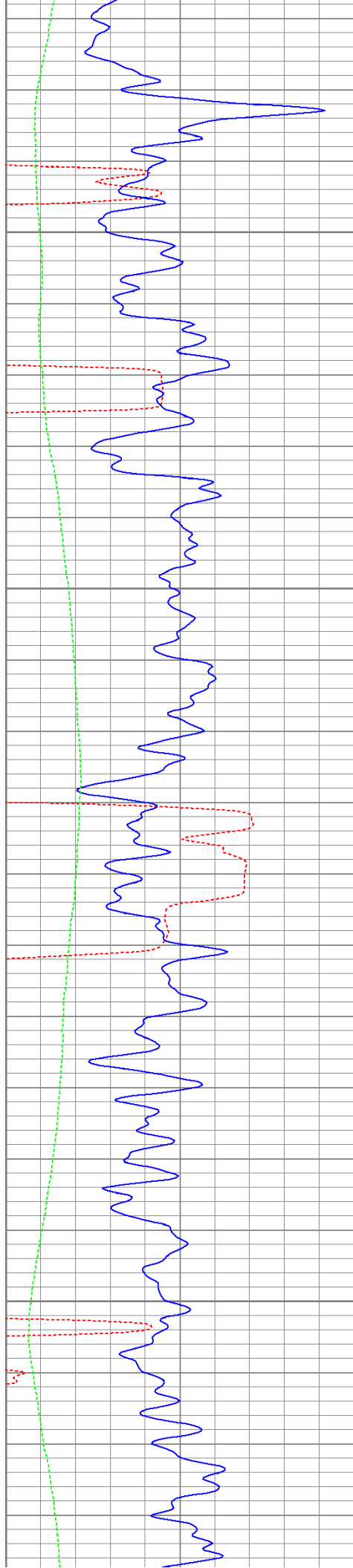
1350

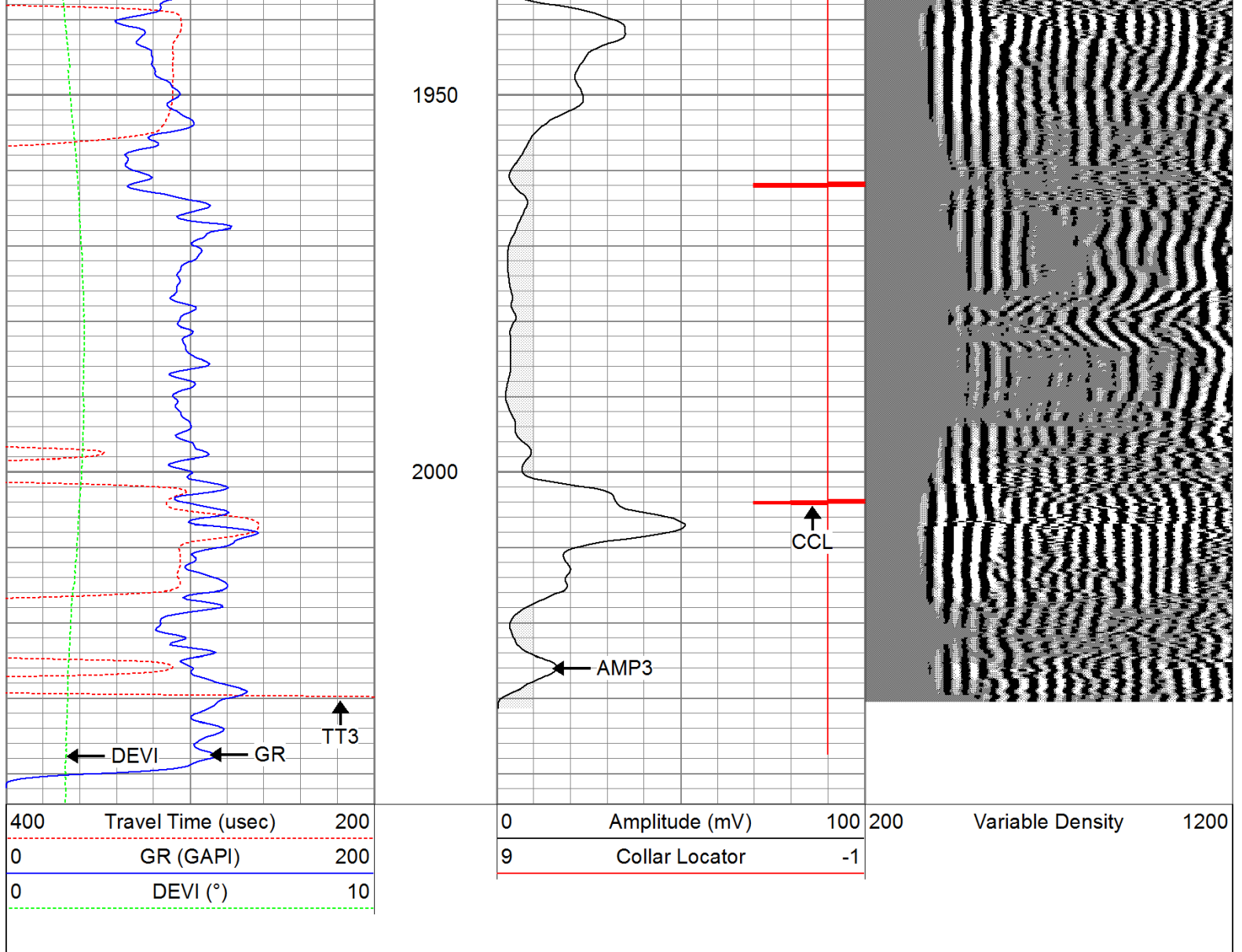
1400

1450



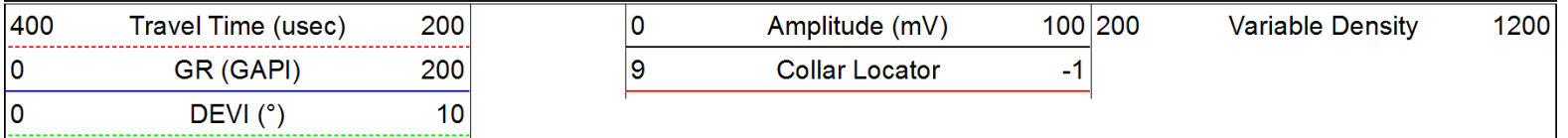


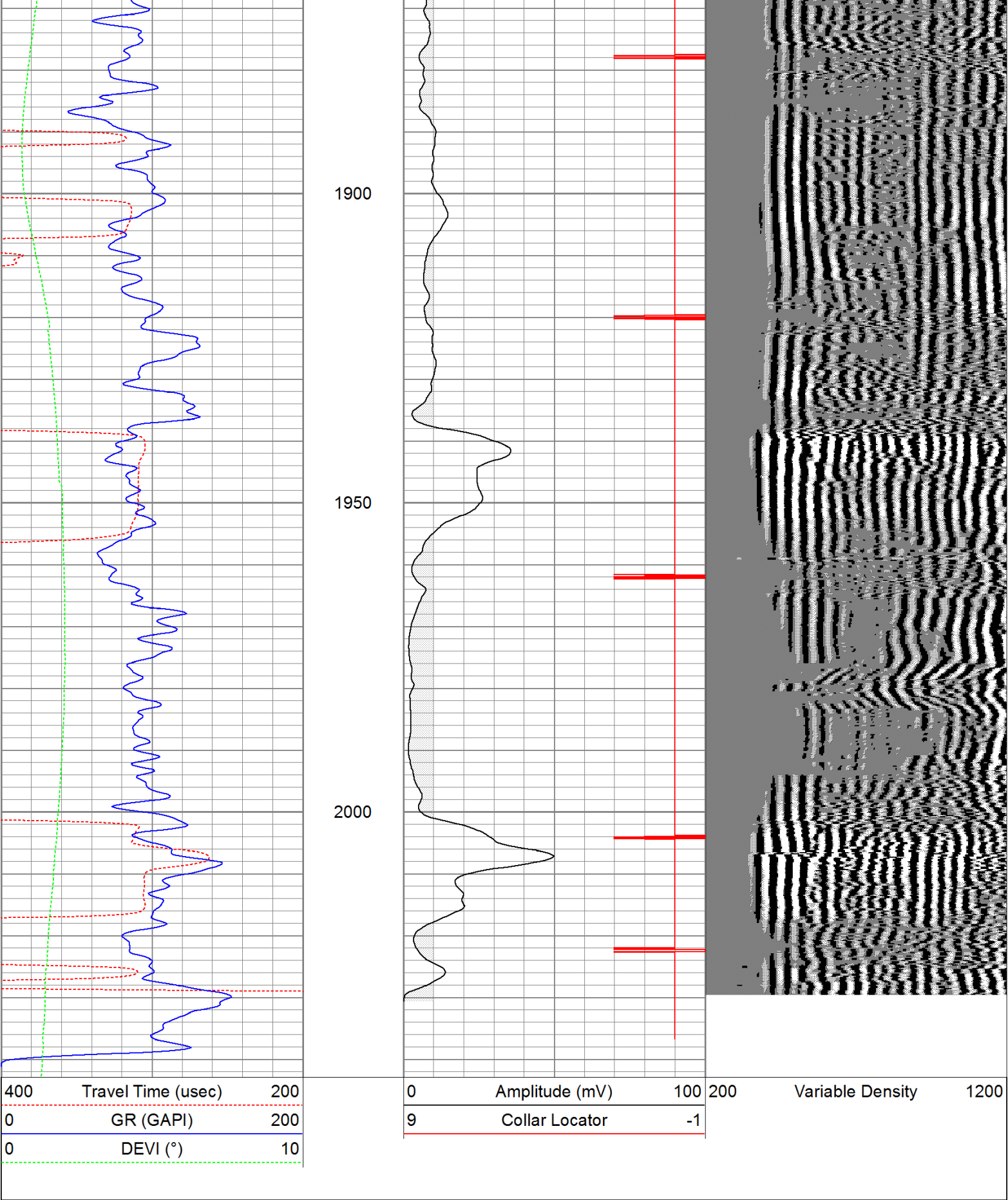




Repeat Section

Database File: wildfire6311b.db
 Dataset Pathname: pass1
 Presentation Format: cbldig
 Dataset Creation: Fri Jun 03 17:32:00 2011 by Log Open-Cased 110302
 Charted by: Depth in Feet scaled 1:240





Calibration Report

Database File: wildfire6311b.db
Dataset Pathname: pass1
Dataset Creation: Fri Jun 03 17:32:00 2011 by Log Open-Cased 110302

Serial Number:	080616	
Tool Model:	275D_INC	
Performed:	Wed May 04 17:31:09 2011	
Calibrator Value:	200.0	GAPI
Background Reading:	50.0	cps
Calibrator Reading:	250.0	cps
Sensitivity:	1.0000	GAPI/cps

Inclinometer Calibration Report

Performed:	Wed May 04 17:39:54 2011				
	Low Read.	High Read.	Low Ref.	High Ref.	
X Accelerometer	-3585.20	3595.40	-1.00	1.00	gee
Y Accelerometer	-3619.40	3520.00	-1.00	1.00	gee
Z Accelerometer					

Cement Bond Log Calibration Report

Serial Number:	081024		
Tool Model:	PROBEDIGITALCBL		
Performed:	Thu Jun 02 14:11:23 2011		
Depth:	45.379	ft	
Casing Diameter:	5.5	in	
	3' Spacing	5' Spacing	
Signal Zero:	0	0	mV
Calibrated Amplitude:	85	85	mV
Reading at Signal Zero:	-0.00598145	-0.00627441	V
Reading in Free Pipe:	1.673	1.23376	V
Gain:	50.6259	68.5462	
Offset:	0.302816	0.430087	

Sensor	Offset (ft)	Schematic	Description	Len (ft)	OD (in)	Wt (lb)	
			None	0.75	1.50	5.00	
WVF3	14.54		CBL-PROBEDIGITALCBL (081024) PROBE DIGITAL CBL	8.75	2.75	106.50	
WVF5	13.54						
			Tekco	2.90	1.69	5.00	
CCL	6.40						

