

XTO ENERGY INC EBUSINESS

Golden Eagle 17-15H

Pense Drilling 19

## Post Job Summary

### Cement Surface Casing

Prepared for: Brent Martin  
Date Prepared: 2/16/10  
Version: 1

Service Supervisor: Dale Sanford

Submitted by: Tiim Gilchrist

HALLIBURTON

# HALLIBURTON

## Service Supervisor Reports

### Job Log

Date/Time	Chart #	Activity Code	Pump Rate	Cum Vol	Pump		Pressure (psig)		Comments
02/13/2010 12:06		Test Lines					2800.0		
02/13/2010 12:08		Pump Spacer 1	5.5	20				110.0	water
02/13/2010 12:33		Pump Lead Cement	5.5	142				150.0	300Sks @ 12# 2.66Y Well Circ @ 76 Bbl Cmt Pumped
02/13/2010 12:58		Pump Tail Cement	5.5	65				180.0	210 Sks @ 13.5# 1.75Y
02/13/2010 13:10		Pump Displacement	5.5	127				250.0	41 Bbl CMT to surface Cmt @ 86 Bbl Disp
02/13/2010 13:35		Shut In Well						190.0	
02/13/2010 13:40		End Job							

*The Road to Excellence Starts with Safety*

<b>Sold To #:</b> 353810		<b>Ship To #:</b> UNKNOWN		<b>Quote #:</b>		<b>Sales Order #:</b> 7173170	
<b>Customer:</b> XTO ENERGY INC EBUSINESS				<b>Customer Rep:</b> King, Dalton			
<b>Well Name:</b> Golden Eagle			<b>Well #:</b> 17-15H			<b>API/UWI #:</b>	
<b>Field:</b> PURGATOIRE RIVER		<b>City (SAP):</b> UNKNOWN		<b>County/Parish:</b> Las Animas			<b>State:</b> Colorado
<b>Contractor:</b> Pense Drilling			<b>Rig/Platform Name/Num:</b> #				
<b>Job Purpose:</b> Cement Surface Casing							
<b>Well Type:</b> Development Well			<b>Job Type:</b> Cement Surface Casing				
<b>Sales Person:</b> FLING, MATTHEW			<b>Srvc Supervisor:</b> SANFORD, DALE			<b>MBU ID Emp #:</b> 219527	

## Job Personnel

HES Emp Name	Exp Hrs	Emp #	HES Emp Name	Exp Hrs	Emp #	HES Emp Name	Exp Hrs	Emp #
COPELAND, GEORGE Willard		429242	MCPHERSON, MATTHEW L		455378	SANFORD, DALE A		219527
VIGIL, NICHOLAS Joseph		443481						

## Equipment

HES Unit #	Distance-1 way	HES Unit #	Distance-1 way	HES Unit #	Distance-1 way	HES Unit #	Distance-1 way
10025030	250 mile	10804557C	250 mile	10824253C	250 mile	10867419C	250 mile
10948696	250 mile	10988836C	250 mile				

## Job Hours

Date	On Location Hours	Operating Hours	Date	On Location Hours	Operating Hours	Date	On Location Hours	Operating Hours
TOTAL	Total is the sum of each column separately							

## Job

## Job Times

Formation Name					Date	Time	Time Zone
Formation Depth (MD)	Top		Bottom		Called Out	13 - Feb - 2010	05:00 MST
Form Type		BHST			On Location	13 - Feb - 2010	08:00 MST
Job depth MD	895. ft	Job Depth TVD	895. ft		Job Started	13 - Feb - 2010	12:06 MST
Water Depth		Wk Ht Above Floor	2. ft		Job Completed	13 - Feb - 2010	13:35 MST
Perforation Depth (MD)	From		To		Departed Loc	13 - Feb - 2010	15:00 MST

## Well Data

Description	New / Used	Max pressure psig	Size in	ID In	Weight lbm/ft	Thread	Grade	Top MD ft	Bottom MD ft	Top TVD ft	Bottom TVD ft
Surf Open Hole Section				17.5				41.	905.	.	.
Conductor Casing	Used		22.				J-55	.	41.		
Surface Casing	New		13.375				J-55	.	895.		

## Tools and Accessories

Type	Size	Qty	Make	Depth	Type	Size	Qty	Make	Depth	Type	Size	Qty	Make
Guide Shoe					Packer					Top Plug			
Float Shoe					Bridge Plug					Bottom Plug			
Float Collar					Retainer					SSR plug set			
Insert Float										Plug Container			
Stage Tool										Centralizers			

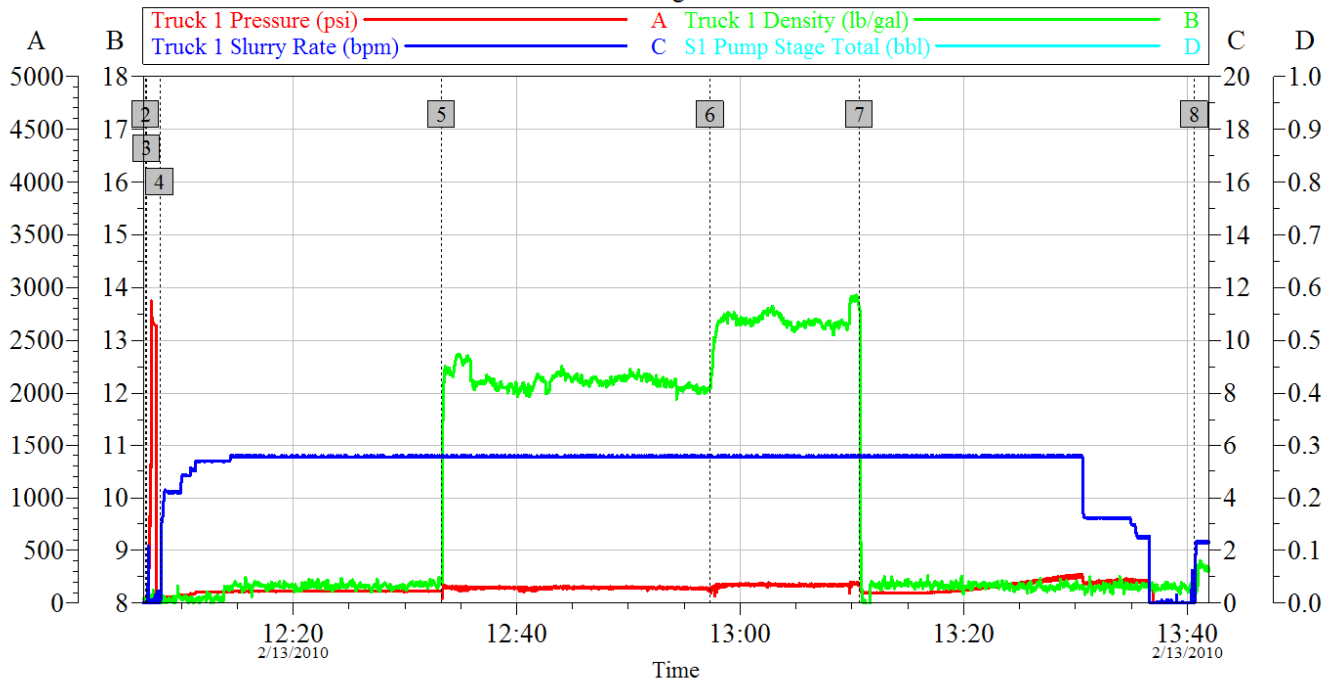
## Miscellaneous Materials

Gelling Agt	Conc	Surfactant	Conc	Acid Type	Qty	Conc	%
Treatment Fld	Conc	Inhibitor	Conc	Sand Type	Size	Qty	

Fluid Data									
Stage/ #: 1									
Fluid #	Stage Type	Fluid Name	Qty	Qty uom	Mixing Density lbm/gal	Yield ft <sup>3</sup> /sk	Mix Fluid Gal/sk	Rate bbl/min	Total Mix Fluid Gal/sk
1	Water Spacer		20.00	bbl	8.33	.0	.0	4.0	
2	Trinidad Surface Blend 12#	MIDCON-2 CEMENT STANDARD - SBM (15078)	300.0	sacks	12.	2.66	15.35	3.0	15.35
	5 lbm	KOL-SEAL, 50 LB BAG (100064232)							
	0.2 %	VERSASET, 55 LB SK (101376573)							
	0.125 lbm	POLY-E-FLAKE (101216940)							
	15.35 Gal	FRESH WATER							
3	Trinidad Surface Blend 13.5#	MIDCON-2 CEMENT STANDARD - SBM (15078)	210.0	sacks	13.5	1.75	8.84		8.84
	5 lbm	KOL-SEAL, 50 LB BAG (100064232)							
	0.125 lbm	POLY-E-FLAKE (101216940)							
	0.2 %	VERSASET, 55 LB SK (101376573)							
	8.84 Gal	FRESH WATER							
4	Displacement		127.00	bbl	8.33			3.0	
Calculated Values		Pressures		Volumes					
Displacement		Shut In: Instant		Lost Returns		Cement Slurry		Pad	
Top Of Cement		5 Min		Cement Returns		Actual Displacement		Treatment	
Frac Gradient		15 Min		Spacers		Load and Breakdown		Total Job	
Rates									
Circulating		Mixing		Displacement		Avg. Job			
Cement Left In Pipe	Amount	0 ft	Reason	Shoe Joint					
Frac Ring # 1 @	ID	Frac ring # 2 @	ID	Frac Ring # 3 @	ID	Frac Ring # 4 @	ID		
The Information Stated Herein Is Correct				Customer Representative Signature					

# HALLIBURTON

## XTO - Surface Golden Eagle 17-15H



### Global Event Log

2	Start Job	12:06:50	3	Test Lines	12:06:55	4	Pump Spacer 1	12:08:05
5	Pump Lead Cement	12:33:17	6	Pump Tail Cement	12:57:19	7	Pump Displacement	13:10:38
8	End Job	13:40:38						

Customer: XTO Energy  
Well Description: Surface

Job Date: 13-Feb-2010  
UWI:

Sales Order #: 7173170  
Golden Eagle 17-15H

OptiCem v6.4.2  
16-Feb-10 16:01