

WILLIAMS PRODUCTION RMT INC EBUSINE
DO NOT MAIL - PO BOX 21218
TULSA, Oklahoma

CTR
CTR 324-28-597

NABORS 109/NABORS/109

Post Job Summary

Cement Surface Casing

Prepared for:
Date Prepared:
Version: 1

Service Supervisor: FEUERBORN, JOHN

Submitted by:

HALLIBURTON

The Road to Excellence Starts with Safety

Sold To #: 300721		Ship To #: 300721		Quote #:		Sales Order #: 6351976	
Customer: WILLIAMS PRODUCTION RMT INC EBUSINE				Customer Rep: GREENMORE, JOHN			
Well Name: CTR			Well #: 324-28-597			API/UWI #:	
Field: PICEANCE		City (SAP): TULSA		County/Parish: Garfield		State: Colorado	
Contractor: NABORS 109			Rig/Platform Name/Num: NABORS 109				
Job Purpose: Cement Surface Casing							
Well Type: Development Well				Job Type: Cement Surface Casing			
Sales Person: KOHL, KYLE				Srvc Supervisor: FEUERBORN, JOHN		MBU ID Emp #: 381677	

Job Personnel

HES Emp Name	Exp Hrs	Emp #	HES Emp Name	Exp Hrs	Emp #	HES Emp Name	Exp Hrs	Emp #
DICKEY, MATTHEW	22	457739	DUBON, TODD N	22	443351	FEUERBORN, JOHN William	22	381677
MILLER, KEVIN Paul	22	443040						

Equipment

HES Unit #	Distance-1 way	HES Unit #	Distance-1 way	HES Unit #	Distance-1 way	HES Unit #	Distance-1 way
10026610	90 mile	10240238C	90 mile	10296152C	90 mile	10565341	90 mile
10719771	90 mile	10897797	90 mile				

Job Hours

Date	On Location Hours	Operating Hours	Date	On Location Hours	Operating Hours	Date	On Location Hours	Operating Hours
TOTAL			<i>Total is the sum of each column separately</i>					

Job

Job Times

Formation Name	Formation Depth (MD)	Top	Bottom	Called Out	Date	Time	Time Zone
Form Type			BHST	On Location	30 - Jan - 2009	16:00	CST
Job depth MD	2590. ft		Job Depth TVD	2590. ft	Job Started	30 - Jan - 2009	17:19 CST
Water Depth			Wk Ht Above Floor	5. ft	Job Completed	31 - Jan - 2009	13:17 CST
Perforation Depth (MD)	From		To		Departed Loc		

Well Data

Description	New / Used	Max pressure psig	Size in	ID in	Weight lbm/ft	Thread	Grade	Top MD ft	Bottom MD ft	Top TVD ft	Bottom TVD ft

Sales/Rental/3rd Party (HES)

Description	Qty	Qty uom	Depth	Supplier
PLUG,CMTG, TOP, 9 5/8, HWE, 8.16 MIN/9.06 MA	1	EA		

Tools and Accessories

Type	Size	Qty	Make	Depth	Type	Size	Qty	Make	Depth	Type	Size	Qty	Make
Guide Shoe					Packer					Top Plug			
Float Shoe					Bridge Plug					Bottom Plug			
Float Collar					Retainer					SSR plug set			
Insert Float										Plug Container			
Stage Tool										Centralizers			

Miscellaneous Materials

Gelling Agt	Conc	Surfactant	Conc	Acid Type	Qty	Conc	%
Treatment Fld	Conc	Inhibitor	Conc	Sand Type	Size	Qty	

Fluid Data

Stage/Plug #: 1											
Fluid #	Stage Type	Fluid Name	Qty	Qty uom	Mixing Density lbm/gal	Yield ft ³ /sk	Mix Fluid Gal/sk	Rate bbl/min	Total Mix Fluid Gal/sk		

Stage/Plug #: 1										
Fluid #	Stage Type	Fluid Name	Qty	Qty uom	Mixing Density lbm/gal	Yield ft ³ /sk	Mix Fluid Gal/sk	Rate bbl/min	Total Mix Fluid Gal/sk	
1	WATER SPACER			bbl	.	.0	.0	.0		
2	Lead Cement	EXTENDACEM (TM) SYSTEM (452981)		sacks	12.3	2.32	11.8			
3	Tail Cement	EXTENDACEM (TM) SYSTEM (452981)		sacks	12.6	2.16	10.58			
4	Displacement			bbl	8.34	.0	.0	.0		
5	SUPER FLUSH 101	SUPER FLUSH 101 - SBM (12199)		bbl	10.	.0	.0	.0		
6	Top Out	HALCEM (TM) SYSTEM (452986)		sacks	15.8	1.15	5.0			
Calculated Values		Pressures			Volumes					
Displacement	196.6	Shut In: Instant		Lost Returns		Cement Slurry		Pad		
Top Of Cement	0	5 Min		Cement Returns	1	Actual Displacement		Treatment		
Frac Gradient		15 Min		Spacers	20	Load and Breakdown		Total Job		
Rates										
Circulating		Mixing		Displacement		Avg. Job				
Cement Left In Pipe	Amount	0 ft	Reason	Shoe Joint						
Frac Ring # 1 @	ID	Frac ring # 2 @	ID	Frac Ring # 3 @	ID	Frac Ring # 4 @	ID			
The Information Stated Herein Is Correct				Customer Representative Signature						

The Road to Excellence Starts with Safety

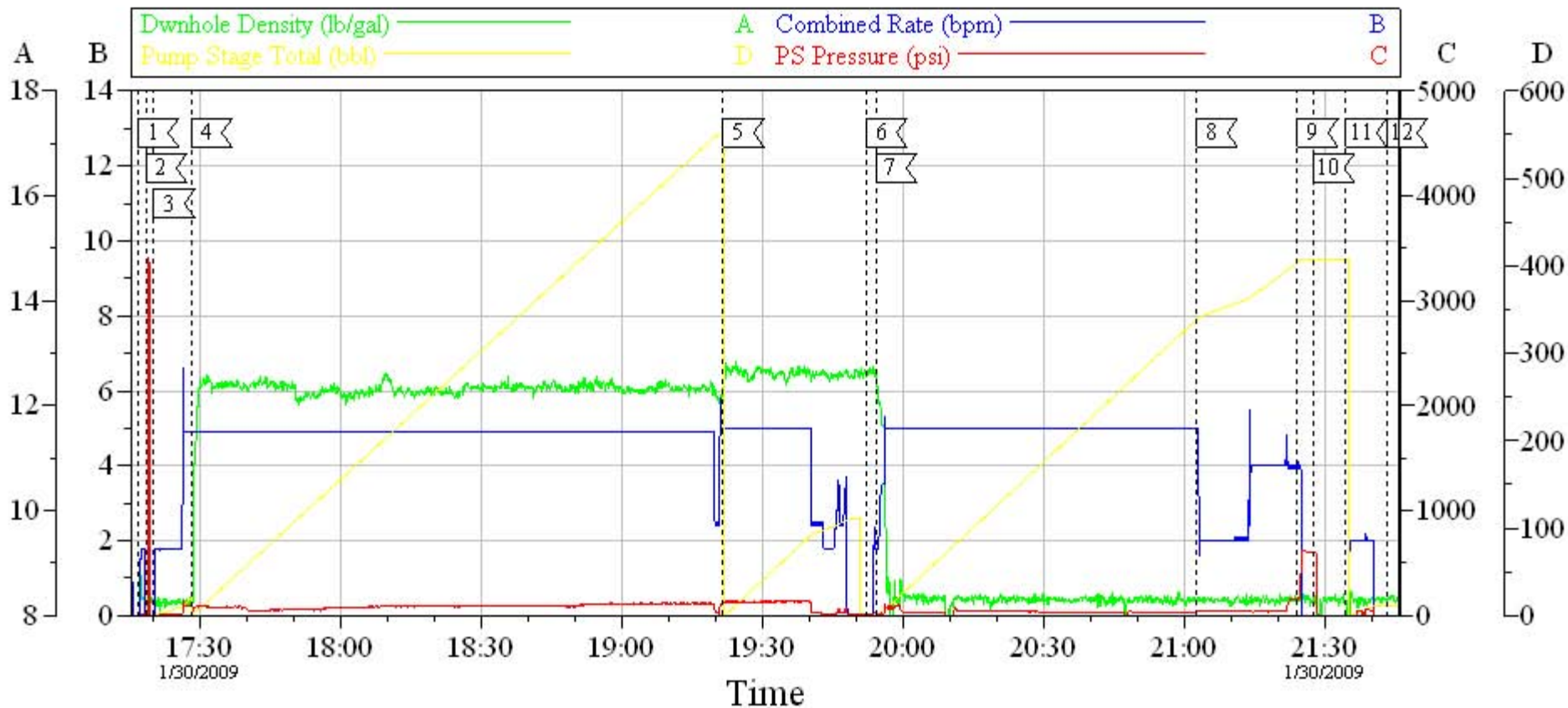
Sold To #: 300721	Ship To #: 300721	Quote #:	Sales Order #: 6351976
Customer: WILLIAMS PRODUCTION RMT INC EBUSINE		Customer Rep: GREENMORE, JOHN	
Well Name: CTR		Well #: 324-28-597	API/UWI #:
Field: PICEANCE	City (SAP): TULSA	County/Parish: Garfield	State: Colorado
Legal Description:			
Lat: N 0 deg. OR N 0 deg. 0 min. 0 secs.		Long: E 0 deg. OR E 0 deg. 0 min. 0 secs.	
Contractor: NABORS 109		Rig/Platform Name/Num: NABORS 109	
Job Purpose: Cement Surface Casing			Ticket Amount:
Well Type: Development Well		Job Type: Cement Surface Casing	
Sales Person: KOHL, KYLE		Srvc Supervisor: FEUERBORN, JOHN	MBU ID Emp #: 381677

Activity Description	Date/Time	Cht #	Rate bbl/min	Volume bbl		Pressure psig		Comments
				Stage	Total	Tubing	Casing	
Depart Yard Safety Meeting	01/30/2009 11:00							
Crew Leave Yard	01/30/2009 11:15							
Other	01/30/2009 14:00							RIG CIRCULATING ON BOTTOM
Arrive At Loc	01/30/2009 16:00							
Safety Meeting - Assessment of Location	01/30/2009 16:05							
Other	01/30/2009 16:10							SPOT EQUIPMENT
Pre-Rig Up Safety Meeting	01/30/2009 16:15							
Rig-Up Equipment	01/30/2009 16:20							
Pre-Job Safety Meeting	01/30/2009 17:00							
Start Job	01/30/2009 17:15							
Test Lines	01/30/2009 17:19							2000psi ON TRUCK AND LINES
Pump Spacer 1	01/30/2009 17:21		5	20			100.0	H2O
Pump Lead Cement	01/30/2009 17:29		5	413.2			68.0	1000skts PUMPED AT 12.3ppg
Pump Tail Cement	01/30/2009 19:22		5	80			145.0	250skts PUMPED AT 12.6ppg
Drop Top Plug	01/30/2009 19:52							PLUG AWAY
Pump Displacement	01/30/2009 19:54		5				185.0	H2O
Other	01/30/2009 21:02		2	190			185.0	SLOW RATE

Activity Description	Date/Time	Cht #	Rate bbl/min	Volume bbl		Pressure psig		Comments
				Stage	Total	Tubing	Casing	
Bump Plug	01/30/2009 21:25		2	196.6			600.0	
Check Floats	01/30/2009 21:28							HOLDING
Other	01/30/2009 21:35		2	8			90.0	PUMP H2O DOWN PARISTIE LINE
End Job	01/30/2009 21:43							NO RETURNS PIPE LEFT STATIC CALCULATE TOP OF CEMENT AT 1689'
Other	01/31/2009 01:40			5				5 BBLS SUPER FLUSH DOWN BACK SIDE OF WELL
Start Job	01/31/2009 01:49							1ST TOP OUT
Pump Spacer 1	01/31/2009 01:50		1	1			25.0	H2O
Pump Tail Cement	01/31/2009 01:53		2	40.9			90.0	200sks PUMPED AT 15.8ppg WITH 2% CAL-CL2
Pump Displacement	01/31/2009 02:13		2	2			50.0	H2O
End Job	01/31/2009 02:15							
Other	01/31/2009 04:35			5				5 BBLS SUPER FLUSH DOWN BACK SIDE
Start Job	01/31/2009 04:43							TOP OUT #2
Pump Spacer 1	01/31/2009 04:44		1	1			25.0	H2O
Pump Tail Cement	01/31/2009 04:47		2	30.7			70.0	150sks PUMPED AT 15.8ppg WITH 2% CAL-CL2
Pump Displacement	01/31/2009 05:03		2	2			50.0	H2O
End Job	01/31/2009 05:06							
Other	01/31/2009 06:40			5				5BBLS SUPER FLUSH DOWN BACK SIDE
Start Job	01/31/2009 06:40							3RD TOP OUT
Pump Spacer 1	01/31/2009 06:40		1	1			25.0	H2O
Pump Tail Cement	01/31/2009 06:40		2	27.5			70.0	135sks PUMPED AT 15.8 WITH 2% CAL-CL2
Pump Displacement	01/31/2009 06:40		2	2			2.0	H2O

Activity Description	Date/Time	Cht #	Rate bbl/min	Volume bbl		Pressure psig		Comments
				Stage	Total	Tubing	Casing	
End Job	01/31/2009 06:40							
Other	01/31/2009 10:35			5				5 BBLS SUPER FLUSH DOWN BACK SIDE
Start Job	01/31/2009 10:40							4TH TOP OUT
Pump Spacer 1	01/31/2009 10:41		1	1			10.0	H2O
Pump Tail Cement	01/31/2009 10:45		1.5	31			10.0	150sks PUMPED AT 15.8ppg WITH 2% CAL- CL2
Pump Displacement	01/31/2009 11:23		1.5	1			10.0	H2O
End Job	01/31/2009 11:25							
Start Job	01/31/2009 13:03							5TH TOP OUT
Pump Spacer 1	01/31/2009 13:04		1	1			10.0	H2O
Pump Tail Cement	01/31/2009 13:07		2	23			10.0	123sks PUMPED AT 15.8 WITH 2% CAL-CL2
Other	01/31/2009 13:08			5				5 BBLS SUPER FLUSH DOWN BACK SIDE AT SAME TIME AS CEMENT
Pump Displacement	01/31/2009 13:15		2	1			10.0	H2O
End Job	01/31/2009 13:17							CEMENT TO SURFACE

9 5/8 SURFACE



Event Log

Intersection	PP	Intersection	PP	Intersection	PP
1 START JOB	17:16:52 -10.00	2 TEST LINES	17:18:34 0.000	3 PUMP SPACER	17:20:18 1.000
4 PUMP LEAD CEMENT	17:28:16 88.00	5 PUMP TAIL CEMENT	19:21:43 122.8	6 DROP PLUG	19:52:10 13.89
7 PUMP DISPLACMENT	19:54:14 30.16	8 SLOW RATE	21:02:42 39.00	9 BUMP PLUG	21:24:09 159.4
10 CHECK FLOATS	21:27:36 609.0	11 PUMP PARISITE LINE	21:34:31 -7.000	12 END JOB	21:43:11 -1.000

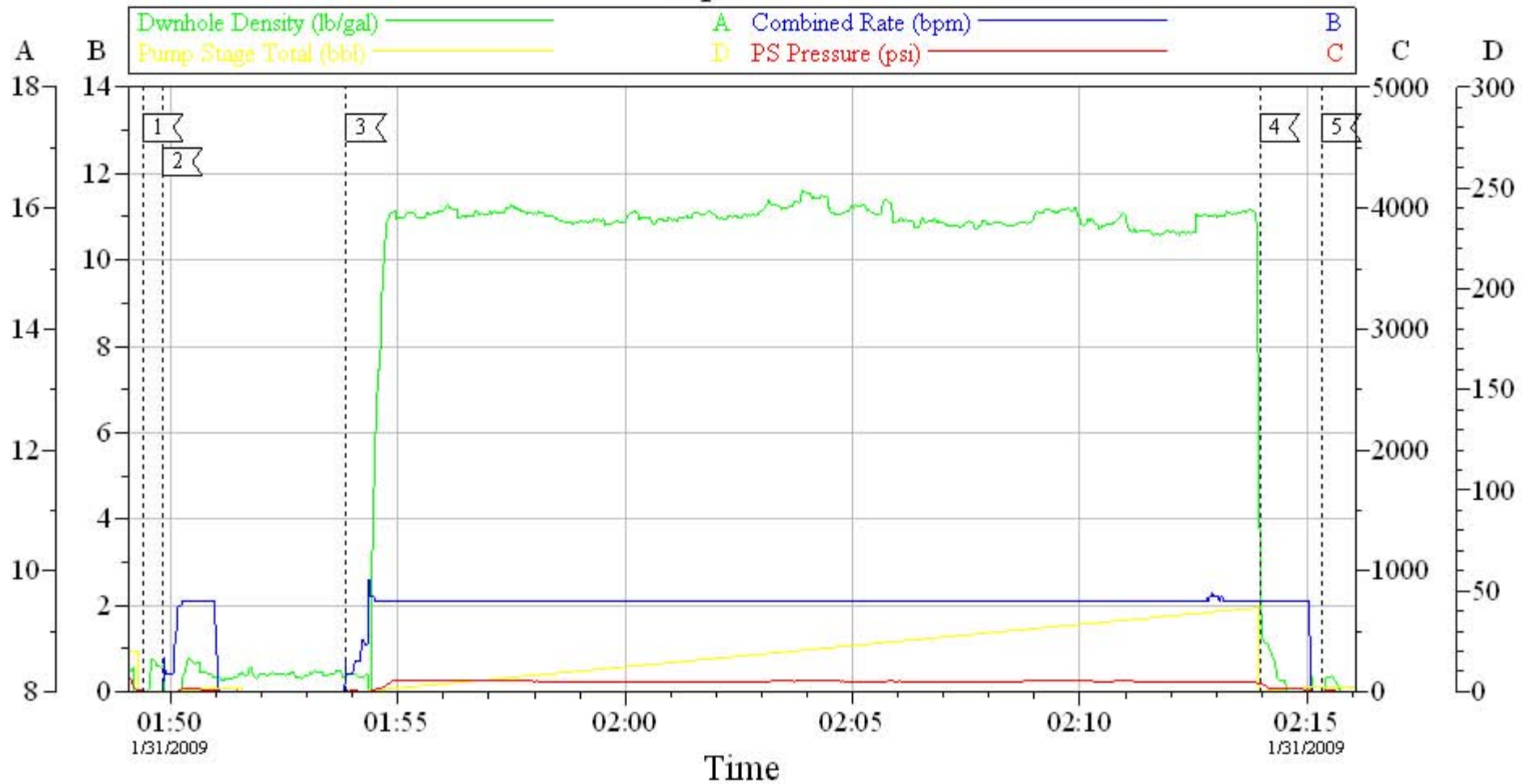
Customer: WILLIAMS
Well Number: CTR 324-28-597
Supervisor: JOHN FEUERBORN

Job Date: 1-30-09
Pump: ELITE 9
Company Rep.: JOHN GREENMORE

Ticket #: 6351976
ADC Used: YES
Operator: TODD DUBON

CemWin v1.7.2
30-Jan-09 21:56

top out 1



Event Log

Intersection	PP	Intersection	PP	Intersection	PP
1 < START JOB	01:49:25 6.000	2 < PUMP PACER	01:49:50 0.000	3 < PUMP TOP OUT	01:53:52 6.000
4 < PUMP DISPLACMENT	02:13:58 72.23	5 < END JOB	02:15:19 0.911		

Customer:
Well Number:
Supervisor: JOHN FEUERBORN

Job Date:
Pump:
Company Rep.:

Ticket #:
ADC Used: YES
Operator:

TOP OUT 2



Event Log

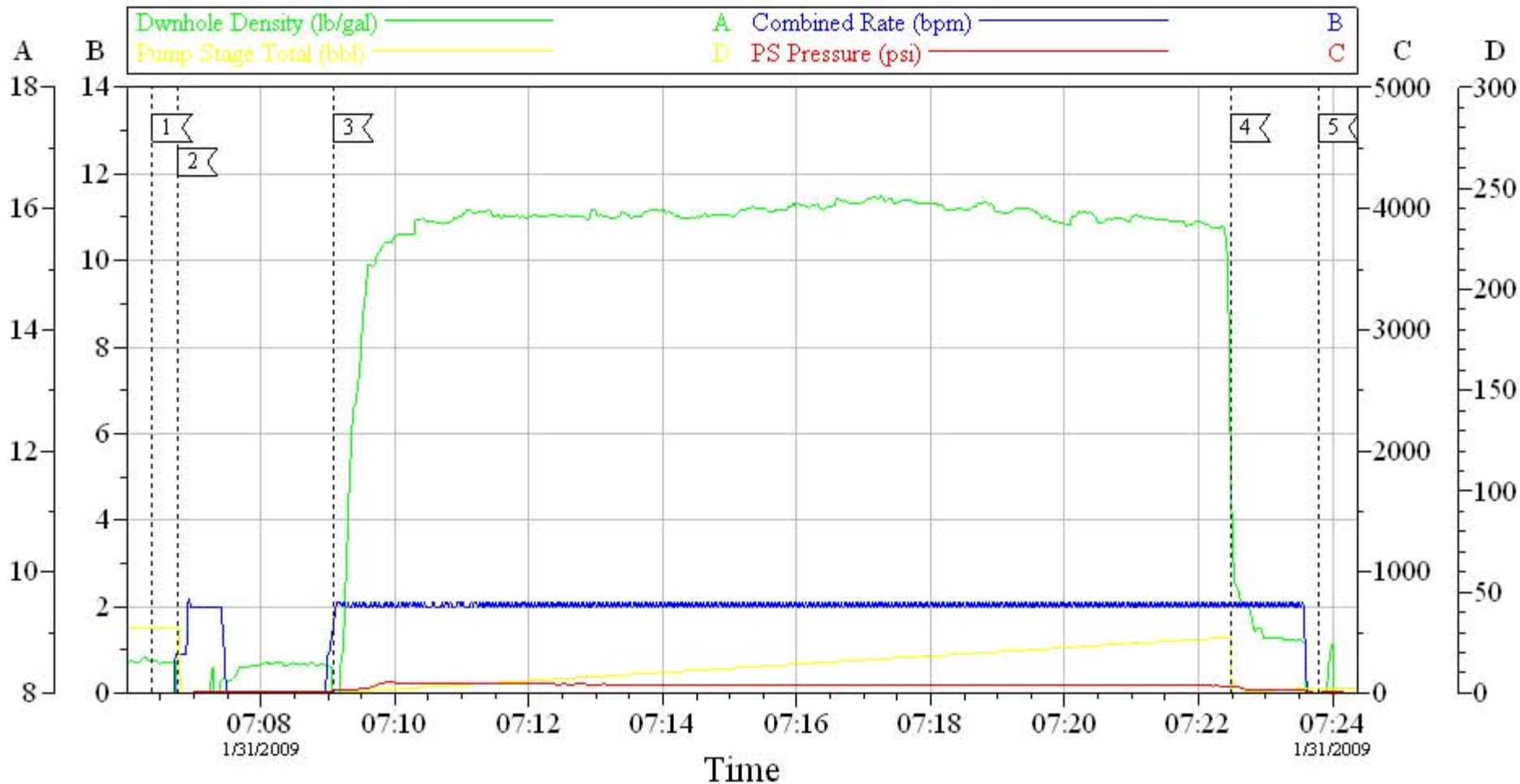
Intersection	PP	Intersection	PP
1 < START JOB	04:43:02 22.26	2 < PUMP SPACER	04:43:30 1.000
4 < PUMP DISPLACMENT	05:03:09 57.60	3 < PUMP TOP OUT	04:47:13 2.000
		5 < END JOB	05:06:24 5.000

Customer:
Well Number:
Supervisor: JOHN FEUERBORN

Job Date:
Pump:
Company Rep.:

Ticket #:
ADC Used: YES
Operator:

TOP OUT=3



Event Log

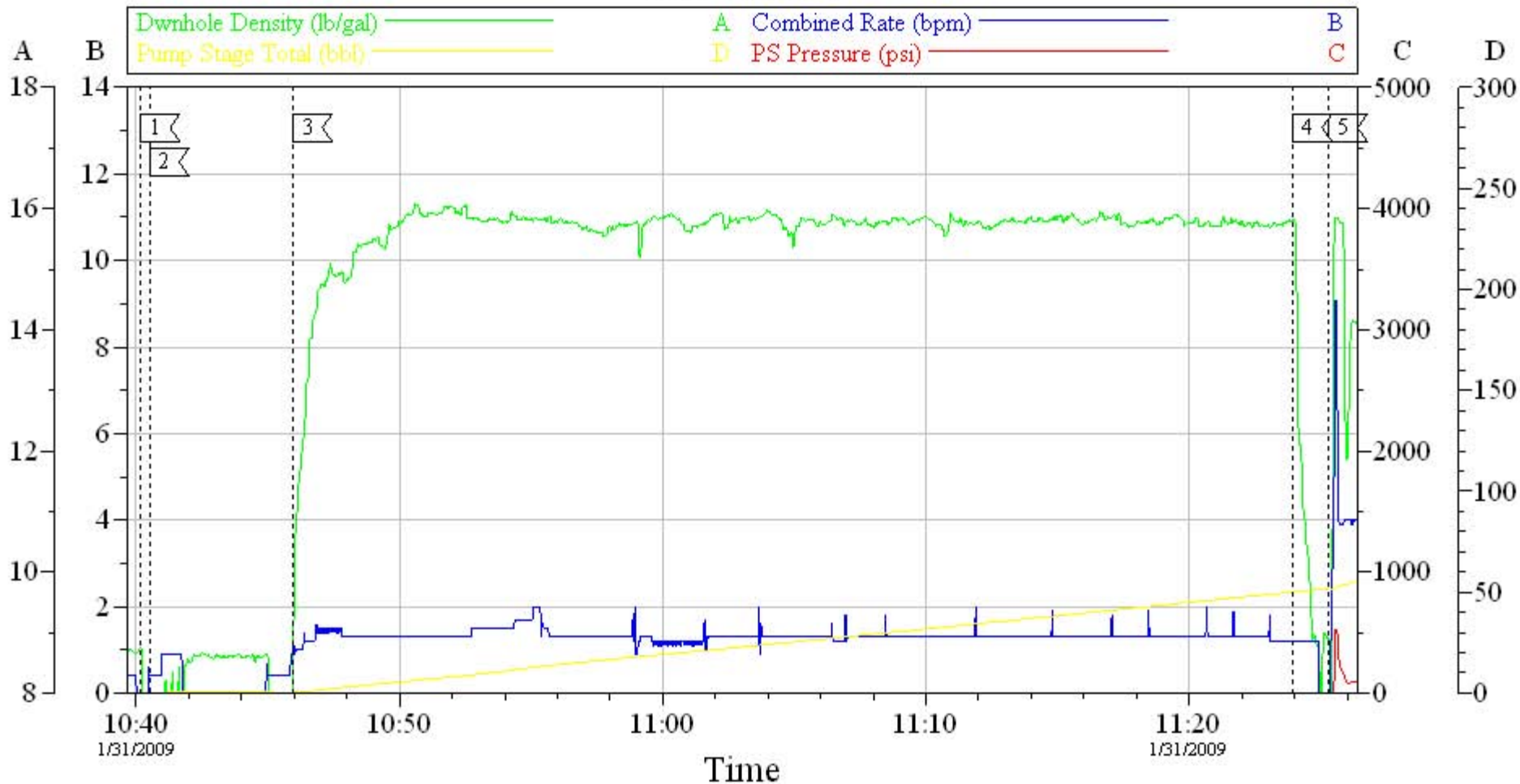
Intersection	PP	Intersection	PP	Intersection	PP
1 < START JOB	07:06:23 3.000	2 < PUMP SPACER	07:06:45 3.324	3 < PUMP TOP OUT	07:09:05 21.00
4 < PUMP DISPLACMENT	07:22:29 55.72	5 < END JOB	07:23:48 5.000		

Customer:
Well Number:
Supervisor: JOHN FEUERBORN

Job Date:
Pump:
Company Rep.:

Ticket #:
ADC Used: YES
Operator:

TOP OUT 4



Event Log

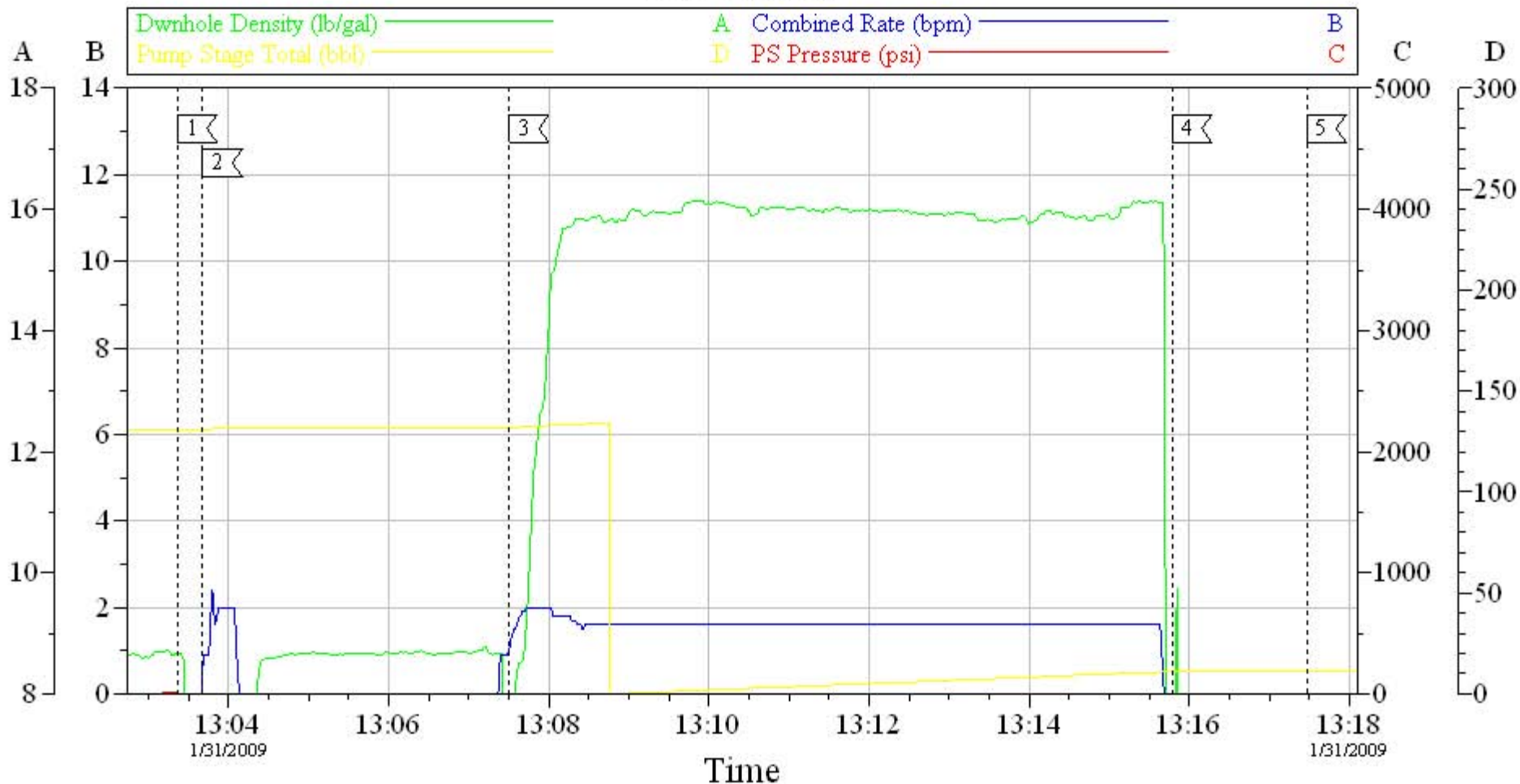
Intersection	PP	Intersection	PP
1 < START JOB	10:40:10 -26.00	2 < PUMP SPACER	10:40:30 -35.00
3 < PUMP TOP OUT	10:45:57 -39.00	4 < PUMP DISPLACMENT	11:23:56 -24.00
5 < END JOB	11:25:16 -28.42		

Customer:
Well Number:
Supervisor: JOHN FEUERBORN

Job Date:
Pump:
Company Rep.:

Ticket #:
ADC Used: YES
Operator:

TOP OUT 5



Event Log

Intersection	PP	Intersection	PP	Intersection	PP
1 START JOB	13:03:22 8.000	2 PUMP SPACER	13:03:41 -36.33	3 PUMP TOP OUT	13:07:30 -44.00
4 PUMP DISPLACMENT	13:15:47 -45.31	5 END JOB	13:17:28 -47.11		

Customer:
Well Number:
Supervisor: JOHN FEUERBORN

Job Date:
Pump:
Company Rep.:

Ticket #:
ADC Used: YES
Operator: