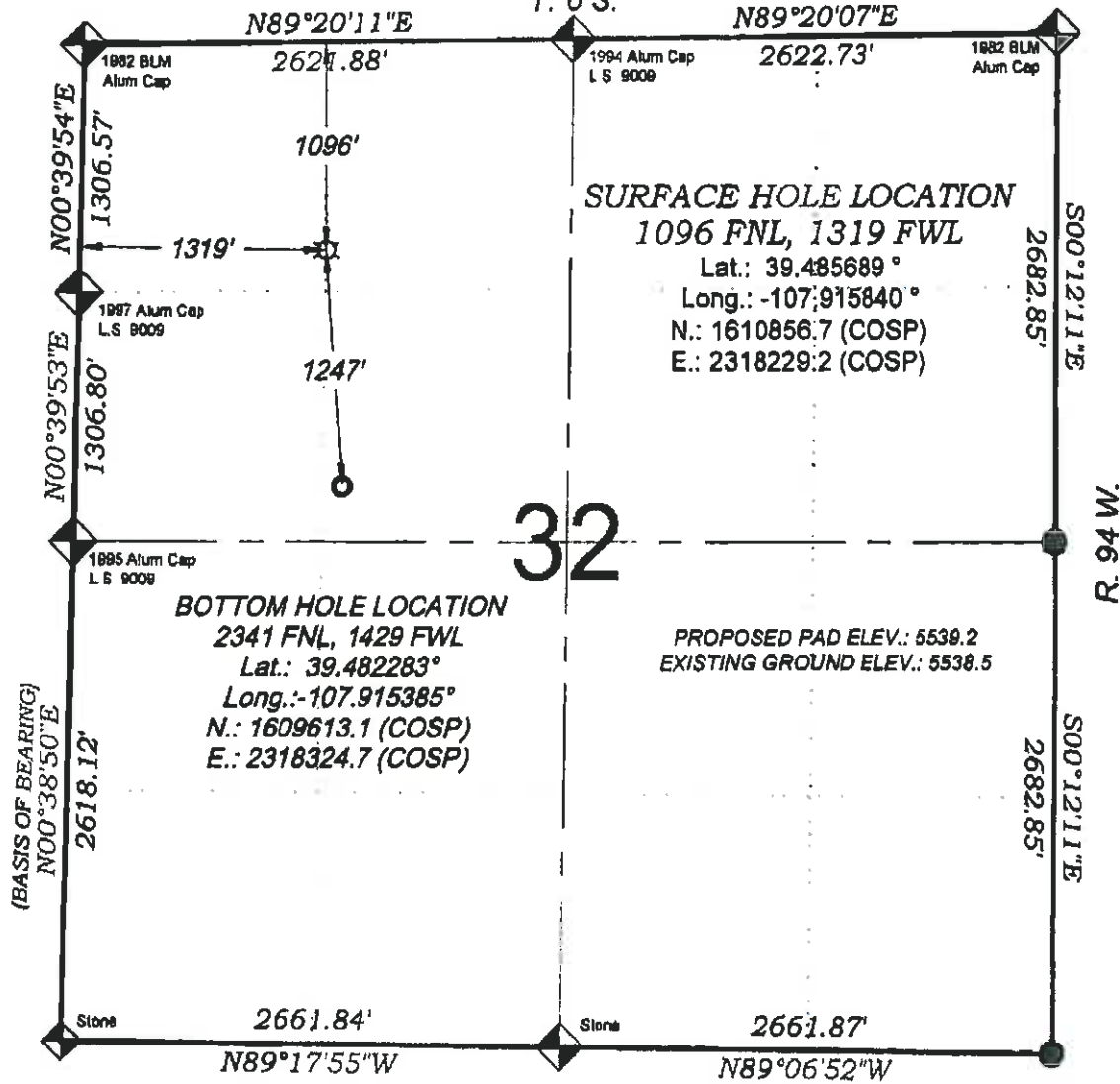


Duggan RWF 22-32

T. 6 S.



SURFACE HOLE LOCATION

1096' FNL, 1319' FWL

Lat.: 39.485689°

Long.: -107.915840°

N.: 1610856.7 (COSP)

E.: 2318229.2 (COSP)

BOTTOM HOLE LOCATION

2341' FNL, 1429' FWL

Lat.: 39.482283°

Long.: -107.915385°

N.: 1609613.1 (COSP)

E.: 2318324.7 (COSP)

PROPOSED PAD ELEV.: 5539.2
EXISTING GROUND ELEV.: 5538.5

THERE ARE NO VISIBLE IMPROVEMENTS WITHIN 400' OF THIS LOCATION



- LEGEND -

FIELD LOCATED SECTION MONUMENTS AS DESCRIBED



FIELD SURVEYED WELL LOCATION



CALCULATED BOTTOM HOLE LOCATION



CALCULATED SECTION CORNER LOCATION



SURVEYORS STATEMENT

I, MICHAEL J. LANGHORNE, A REGISTERED LAND SURVEYOR IN THE STATE OF COLORADO DO HEREBY CERTIFY THAT THE SURVEY SHOWN HEREON WAS PREPARED UNDER MY DIRECT SUPERVISION AND HAS BEEN STAKED ON THE GROUND AS SHOWN ON THE PLAT AND CHECKING THAT THE MAP IS A TRUE REPRESENTATION THEREOF.

MICHAEL J. LANGHORNE, COLORADO REGISTRATION NO. 36572 FOR AND ON BEHALF OF BOOKCLIFF SURVEY SERVICES, INC.

REFERENCES

- 1) PARTIALLY SURVEYED T. 6 S., R. 94 W., 6th P.M (GLO PLAT)
- 2) U.S.G.S. QUAD: RULISON, CO

NOTES

- 1) ELEVATIONS BASED ON N.A. V.D. 1988 PUBLISHED COORDINATES
- 2) LATITUDES AND LONGITUDES ARE BASE ON NAD 83, PUBLISHED COORDINATES
- 3) STATE PLANE COORDINATES ARE BASED ON COLORADO CENTRAL ZONE, U.S. SURVEY FEET.
- 4) ELEVATION MASK SET TO 15"
- 5) GPS OPERATOR J. KIRKPATRICK, OBSERVED A PDOP 1.8 ON SURVEY POINT NUMBER 160004.
- 6) SURFACE AND BOTTOM HOLE LOCATIONS ARE MEASURED 90° FROM SECTION LINES

WELL LOCATION PLAT Prepared for:

Williams Williams Production, RMT

NE1/4 NW1/4, SECTION 32
T. 6 S., R. 94 W. of the 6th P.M.
GARFIELD COUNTY, COLORADO

1000 South 20th Street
Wynne, Colorado 81096
Ph (970) 835-2720
Fax (970) 835-2773

BOOKCLIFF
Survey Services, Inc.

SURVEY DATE: 5/16/11
MAP DATE: 6/29/11
SCALE: 1" = 1000'
PLAT: 1 of 1
PROJECT: Williams Valley