

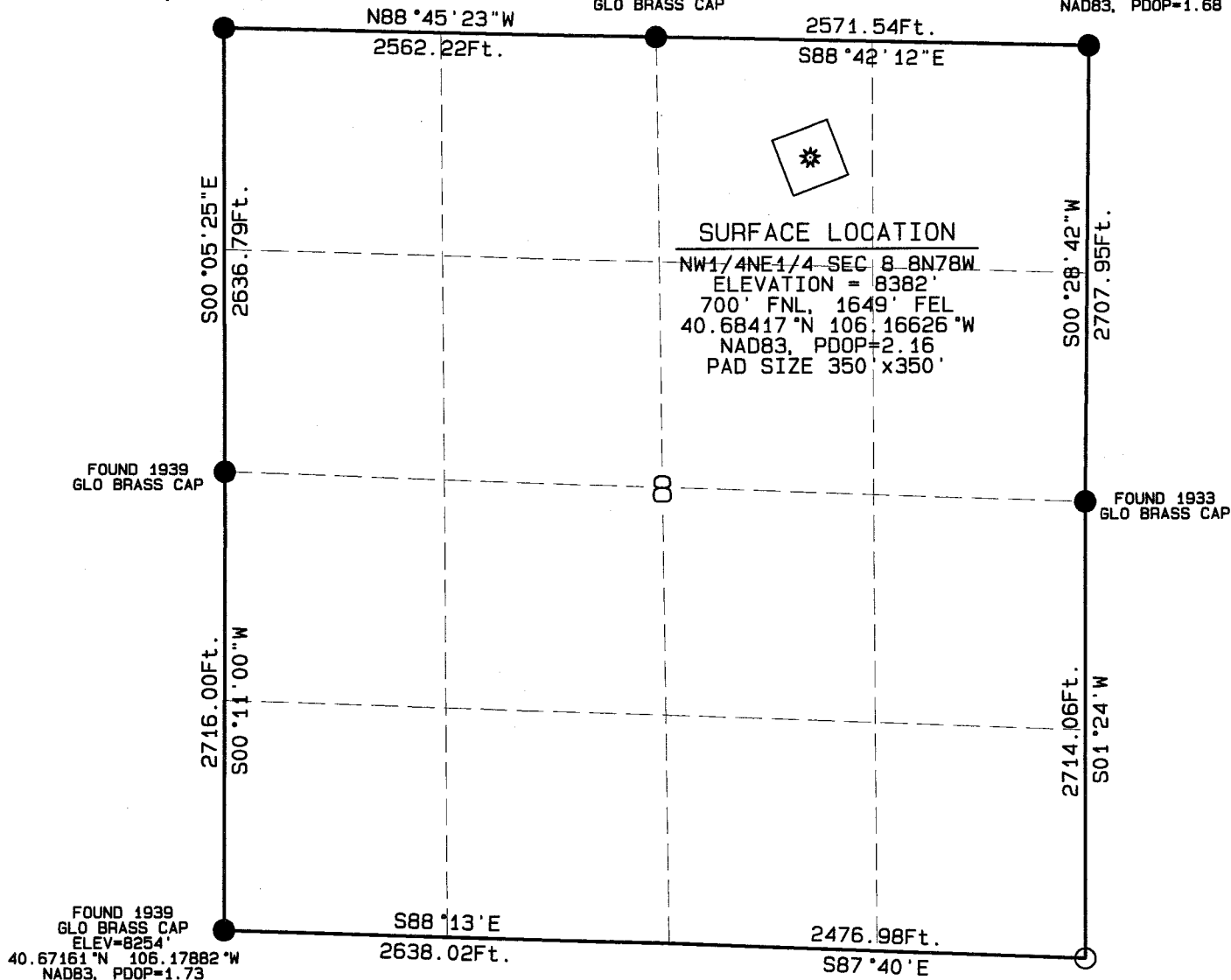
SECTION 8  
TOWNSHIP 8 NORTH  
RANGE 78 WEST

CULVER 31-8

FOUND 2007  
ALUM CAP. PLS 29408  
ELEV=8316'  
40.68630°N 106.17879°W  
NAD83, PDOP=1.22

FOUND 1939  
GLO BRASS CAP

FOUND 1933  
GLO BRASS CAP  
ELEV=8410'  
40.68598 °N 106.16029 °W  
NAD83, PDOP=1.68



0 1000



SCALE 1"=1000'

IN ACCORDANCE WITH A REQUEST FROM BONANZA CREEK ENERGY, INC. NORTH PARK ENGINEERING & CONSULTING, INC., HAS DETERMINED THE LOCATION OF THE CULVER 31-8 TO BE 700' FNL, 1649' FEL, AS MEASURED AT NINETY (90) DEGREES FROM THE SECTION LINES, SECTION 8, TOWNSHIP 6 NORTH, RANGE 78 WEST, 6TH PRINCIPAL MERIDIAN, JACKSON COUNTY, COLORADO.

I HEREBY CERTIFY THAT THIS WELL LOCATION CERTIFICATE WAS PREPARED BY RANDALL R. MILLER, PLS OR UNDER MY DIRECT SUPERVISION, THAT THE FIELD WORK WAS COMPLETED ON 6/14/2011. FOR AND ON BEHALF OF BONANZA CREEK, THAT IT IS NOT A LAND SURVEY PLAT OR AN IMPROVEMENT SURVEY PLAT, AND THAT IT IS NOT TO BE RELIED UPON FOR ESTABLISHMENT OF FENCE, BUILDING, OR OTHER FUTURE IMPROVEMENT LINES.

**NOTES:**

- 1) BASIS OF BEARINGS FOR THIS MAP ARE BASED UPON GPS OBSERVATIONS
- 2) MADE ON 6/14/2011 BETWEEN MONUMENTS LOCATED AT THE NORTH QUARTER
- 3) CORNER AND THE NORTHEAST SECTION CORNER OF SAID SECTION AND
- 4) WITH ALL BEARINGS SHOWN HEREON RELATIVE THERETO.
- 5) ELEVATIONS ARE BASED UPON THE AVERAGE OF SPOT ELEVATIONS DEPICTED
- 6) ON THE USGS 7.5 MINUTE QUADRANGLE MAP OF THE SECTION SHOWN HEREON.
- 7) 3) THERE IS NO WORKING WATER WITHIN THE WELL LOCATION.
- 8) 4) IRRIGATION DITCHES EXIST 320' AND 600' WEST OF WELL LOCATION.
- 9) 5) THE LOCATION FALLS IN AN OPEN FIELD (SURFACE USE, AGRICULTURAL.)

**NOTICE:** According to Colorado law you **MUST** commence any legal action based upon any defect in the W.L.C. within three years after you first discover such defect. In no event may any action based upon this defect in this W.L.C. be commenced more than ten years from this said date of the certification shown hereon.



### LEGEND

- FOUND CORNER (AS NOTED)  
 ○ RECORD CORNER  
 POSITION (GLO)  
 ⚙ PROPOSED WELL