

LARAMIE ENERGY II LLC EBUSINESS
1600 LINCOLN ST -DO NOT MAIL
DENVER, Colorado

REPP0
REPP0 34-7B

GreyWolf 706/ GreyWolf/706

Post Job Summary

Cement Surface Casing

Prepared for:
Date Prepared:
Version: 1

Service Supervisor: WYLEY, KEVIN

Submitted by:

HALLIBURTON

The Road to Excellence Starts with Safety

The Road to Excellence Starts With Safety

Sold To #: 344919	Ship To #: 2748562	Quote #:	Sales Order #: 6998412
Customer: LARAMIE ENERGY II LLC EBUSINESS		Customer Rep: Stapleton, Gary	
Well Name: REPP0		Well #: 34-7B	API/UWI #: 05-045-15788
Field: GRAND VALLEY	City (SAP): RIFLE	County/Parish: Garfield	State: Colorado
Lat: N 39.394 deg. OR N 39 deg. 23 min. 37.957 secs.		Long: W 108.095 deg. OR W -109 deg. 54 min. 17.665 secs.	
Contractor: GreyWolf 706		Rig/Platform Name/Num: GreyWolf 706	
Job Purpose: Cement Surface Casing			
Well Type: Development Well		Job Type: Cement Surface Casing	
Sales Person: METLI, MARSHALL	Srvc Supervisor: WYLEY, KEVIN		MBU ID Emp #: 339437

Job Personnel

HES Emp Name	Exp Hrs	Emp #	HES Emp Name	Exp Hrs	Emp #	HES Emp Name	Exp Hrs	Emp #
MAGERS, MICHAEL Gerard	3	339439	NYE, KEVEN	3	460558	OLDS, RYAN John	3	418018
STEELE, BENJAMIN F	3	458599	TALAROVICH, JEREMY Jay	3	425449	WYLEY, KEVIN Todd	3	339437

Equipment

HES Unit #	Distance-1 way	HES Unit #	Distance-1 way	HES Unit #	Distance-1 way	HES Unit #	Distance-1 way
10297346	43 mile	10744648C	43 mile	10998508	43 mile	11071559	43 mile
11259886	43 mile						

Job Hours

Date	On Location Hours	Operating Hours	Date	On Location Hours	Operating Hours	Date	On Location Hours	Operating Hours
11/9/09	3	1						

TOTAL	Total is the sum of each column separately							
-------	--	--	--	--	--	--	--	--

Job

Formation Name					Job Times			
Formation Depth (MD)	Top		Bottom		Called Out	Date	Time	Time Zone
Form Type		BHST			On Location	09 - Nov - 2009	00:00	MST
Job depth MD	850. ft	Job Depth TVD	850. ft		Job Started	09 - Nov - 2009	00:00	MST
Water Depth		Wk Ht Above Floor	5. ft		Job Completed	09 - Nov - 2009	00:00	MST
Perforation Depth (MD)	From		To		Departed Loc	09 - Nov - 2009	00:00	MST

Well Data

Description	New / Used	Max pressure psig	Size in	ID in	Weight lbm/ft	Thread	Grade	Top MD ft	Bottom MD ft	Top TVD ft	Bottom TVD ft
12 1/4 Open Hole Section				12.25				.	848.		
8 5/8 Surface Casing	Unknown		8.625	7.921	32.			.	850.		

Sales/Rental/3rd Party (HES)

Description	Qty	Qty uom	Depth	Supplier
PLUG,CMTG,TOP,8 5/8,HWE,7.20 MIN/8.09 MA	1	EA		
PORT. DAS W/CEMWIN;ACQUIRE W/HES, ZI	1	JOB		
ADC (AUTO DENSITY CTRL) SYS, /JOB,ZI	1	JOB		

Tools and Accessories

Type	Size	Qty	Make	Depth	Type	Size	Qty	Make	Depth	Type	Size	Qty	Make
Guide Shoe					Packer					Top Plug	8 5/8	1	
Float Shoe					Bridge Plug					Bottom Plug			
Float Collar					Retainer					SSR plug set			
Insert Float										Plug Container	8 5/8	1	
Stage Tool										Centralizers			

Miscellaneous Materials

Gelling Agt	Conc	Surfactant	Conc	Acid Type	Qty	Conc	%
Treatment Fld	Conc	Inhibitor	Conc	Sand Type	Size	Qty	

Fluid Data

Stage/Plug #: 1										
Fluid #	Stage Type	Fluid Name	Qty	Qty uom	Mixing Density lbm/gal	Yield ft ³ /sk	Mix Fluid Gal/sk	Rate bbl/min	Total Mix Fluid Gal/sk	
1	Fresh Water Spacer		20.00	bbl	.	.0	.0	6		
2	Tail Cement	VERSACEM (TM) SYSTEM (452010)	326.0	sacks	14.2	1.52	7.59	6	7.59	
7.59 Gal		FRESH WATER								
3	DISPLACEMENT		50.00	bbl	.	.0	.0	8		
Calculated Values		Pressures		Volumes						
Displacement	49.8	Shut In: Instant		Lost Returns	NO	Cement Slurry	88.3	Pad		
Top Of Cement		5 Min		Cement Returns	15	Actual Displacement	49.5	Treatment		
Frac Gradient		15 Min		Spacers	20	Load and Breakdown		Total Job		
Rates										
Circulating	RIG	Mixing	6	Displacement	8	Avg. Job	7			
Cement Left In Pipe	Amount	32 ft	Reason	Shoe Joint						
Frac Ring # 1 @	ID	Frac ring # 2 @	ID	Frac Ring # 3 @	ID	Frac Ring # 4 @	ID			
The Information Stated Herein Is Correct				Customer Representative Signature						

The Road to Excellence Starts with Safety

Sold To #: 344919	Ship To #: 2748562	Quote #:	Sales Order #: 6998412
Customer: LARAMIE ENERGY II LLC EBUSINESS		Customer Rep: Stapleton, Gary	
Well Name: REPPO	Well #: 34-7B	API/UWI #: 05-045-15788	
Field: GRAND VALLEY	City (SAP): RIFLE	County/Parish: Garfield	State: Colorado
Legal Description:			
Lat: N 39.394 deg. OR N 39 deg. 23 min. 37.957 secs.		Long: W 108.095 deg. OR W -109 deg. 54 min. 17.665 secs.	
Contractor: GreyWolf 706		Rig/Platform Name/Num: GreyWolf 706	
Job Purpose: Cement Surface Casing			Ticket Amount:
Well Type: Development Well		Job Type: Cement Surface Casing	
Sales Person: METLI, MARSHALL		Srv Supervisor: WYLEY, KEVIN	MBU ID Emp #: 339437

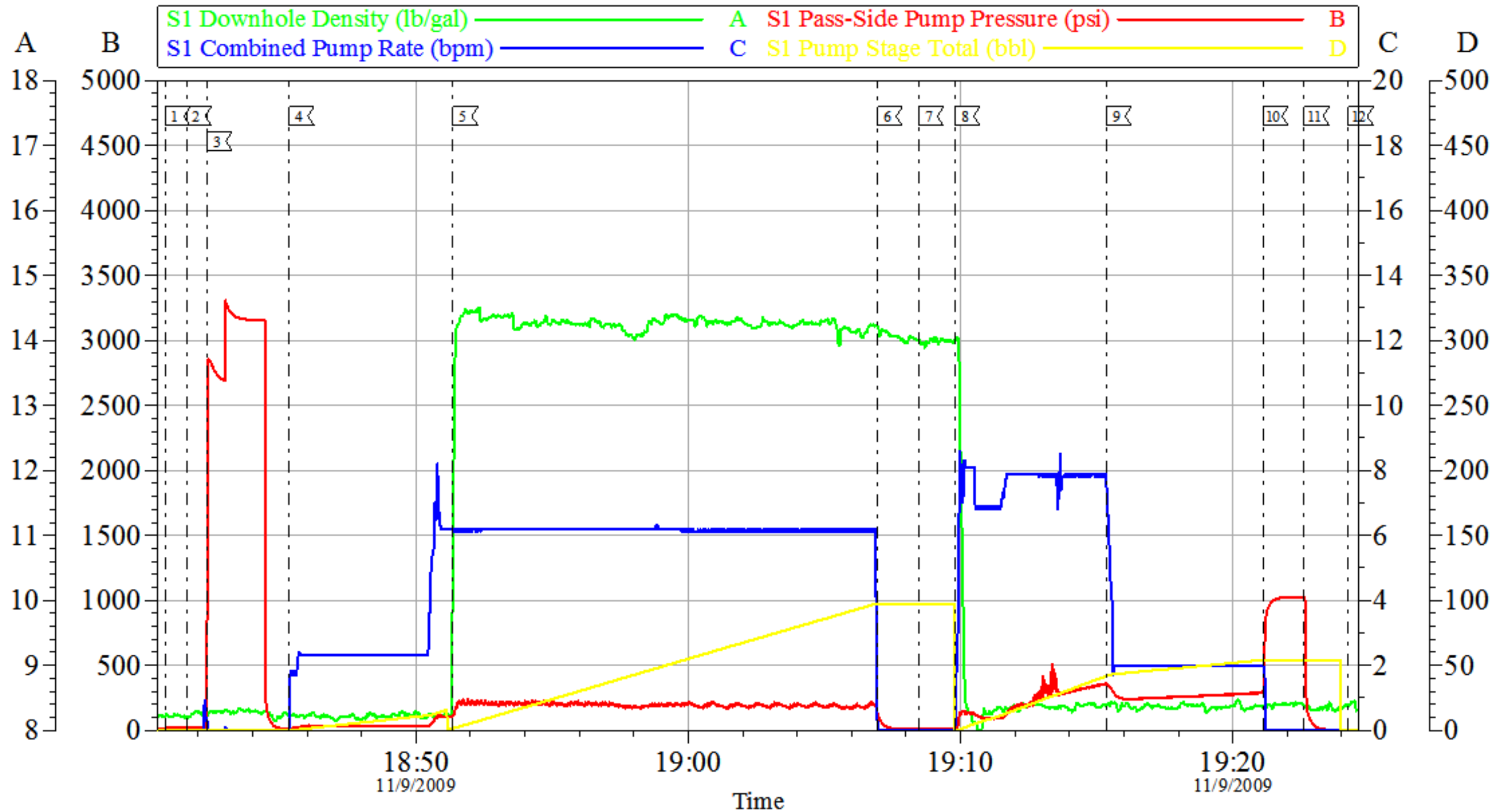
Activity Description	Date/Time	Cht #	Rate bbl/min	Volume bbl		Pressure psig		Comments
				Stage	Total	Tubing	Casing	
Call Out	11/09/2009 12:10							
Pre-Convoy Safety Meeting	11/09/2009 13:15							WITH ALL HES PERSONNEL
Arrive at Location from Service Center	11/09/2009 15:00							TD- 848, TP 850, SJ-32,, MUD - 9.4, HOLE 12 1/4, CSG- 8 5/8 32.3#
Assessment Of Location Safety Meeting	11/09/2009 15:10							WITH ALL HES PERSONNEL
Other	11/09/2009 17:30							SPOT EQUIPMENT
Pre-Rig Up Safety Meeting	11/09/2009 17:40							WITH ALL HES PERSONNEL
Rig-Up Equipment	11/09/2009 17:50							
Pre-Job Safety Meeting	11/09/2009 18:20							WITH ALL PERSONNEL ON LOCATION
Start Job	11/09/2009 18:40							WATER TEST-PH-6 SULFATE-UNDER 200 IRON-0 CLORIDE-0 HARDNESS-250 POT-250 TEMP-50 TDS-140
Test Lines	11/09/2009 18:42						3100.0	PSI TEST OK
Pump Spacer 2	11/09/2009 18:45		6	20			120.0	FRESH H2O
Pump Tail Cement	11/09/2009 18:51		6	88.3			200.0	326 SKS 14.2 PPG 1.52 FT3/SK 7.59 GAL/SK
Shutdown	11/09/2009 19:06							
Drop Plug	11/09/2009 19:08							PLUG AWAY NO PROBLEM
Pump Displacement	11/09/2009 19:09		10	49.8			340.0	FRESH H2O,

Sold To # : 344919 Ship To # : 2748562 Quote # : Sales Order # : 6998412

Activity Description	Date/Time	Cht #	Rate bbl/min	Volume bbl		Pressure psig		Comments
				Stage	Total	Tubing	Casing	
Slow Rate	11/09/2009 19:15		4	39.8			280.0	SLOW RATE THE LAST 10 BBLS OF DISPLACEMENT TO LAND THE PLUG
Bump Plug	11/09/2009 19:21		4	49.8			1000.0	BUMPED PLUG
Check Floats	11/09/2009 19:22							FLOATS HELD, 1/2 BBLS BACK
End Job	11/09/2009 19:24							NO PIPE MOVEMENT, GOOD CIRCULATION THROUGHOUT THE ENTIRE CMT JOB, 15 BBLS OF GOOD CEMENT TO SURFACE
Safety Meeting - Pre Rig-Down	11/09/2009 19:30							ALL HES PERSONEL
Rig-Down Equipment	11/09/2009 19:40							
Safety Meeting - Departing Location	11/09/2009 20:30							SAFETY MEETING INVOLVING THE ENTIRE CMT CREW
Other	11/09/2009 20:31							THANK YOU FOR CHOOSING HALLIBURTON, KEVIN WYLEY AND CREW

Laramie II

8 5/8" Surface



Customer: Laramie II
 Well Description: Reppo 34-7B
 Company Rep: Gary Stapleton

Job Date: 09-Nov-2009
 Job Type: Surface
 Cement Supervisor: Kevin Wyley

Sales Order #: 6998412
 ADC Used: Yes
 Elite #/Operator: 6 - Ryan Olds

OptiCem v6.4.2
 09-Nov-09 19:40