
LARAMIE ENERGY II LLC EBUSINESS

**Reppo 34-14B
PICEANCE
Garfield County , Colorado**

Cement Surface Casing
24-Sep-2009

Post Job Report

The Road to Excellence Starts with Safety

Sold To #: 344919		Ship To #: 344919		Quote #:		Sales Order #: 6891097	
Customer: LARAMIE ENERGY II LLC EBUSINESS				Customer Rep: CLAUSSEN, KELLY			
Well Name: Reppo			Well #: 34-14B			API/UWI #:	
Field: PICEANCE		City (SAP): DEBEQUE		County/Parish: Garfield		State: Colorado	
Contractor: Precision			Rig/Platform Name/Num: Precision 706				
Job Purpose: Cement Surface Casing							
Well Type: Development Well				Job Type: Cement Surface Casing			
Sales Person: HARTLEY, RICHARD			Srvc Supervisor: NELSON, RYAN		MBU ID Emp #: 386514		

Job Personnel

HES Emp Name	Exp Hrs	Emp #	HES Emp Name	Exp Hrs	Emp #	HES Emp Name	Exp Hrs	Emp #
HUGHES, STEVEN Shane	4.5	300140	KUKUS, CRAIG A	4.5	369124	NELSON, RYAN Cody	4.5	386514

Equipment

HES Unit #	Distance-1 way	HES Unit #	Distance-1 way	HES Unit #	Distance-1 way	HES Unit #	Distance-1 way
10551730	43 mile	10592964	43 mile	10867531	43 mile	10951245	43 mile
10989685	43 mile						

Job Hours

Date	On Location Hours	Operating Hours	Date	On Location Hours	Operating Hours	Date	On Location Hours	Operating Hours
9-23-09	2	0	9-24-09	3.5	2			

TOTAL *Total is the sum of each column separately*

Job

Job Times

Formation Name	Job			Date	Time	Time Zone
Formation Depth (MD)	Top	Bottom		Called Out	23 - Sep - 2009	18:30 MST
Form Type	BHST			On Location	23 - Sep - 2009	22:00 MST
Job depth MD	950. ft	Job Depth TVD	950. ft	Job Started	24 - Sep - 2009	01:45 MST
Water Depth		Wk Ht Above Floor	3. ft	Job Completed	24 - Sep - 2009	02:25 MST
Perforation Depth (MD)	From	To		Departed Loc	24 - Sep - 2009	03:30 MST

Well Data

Description	New / Used	Max pressure psig	Size in	ID in	Weight lbm/ft	Thread	Grade	Top MD ft	Bottom MD ft	Top TVD ft	Bottom TVD ft
121/4 Open Hole Section				8.625				0	950.		
8 5/8 Surface Casing			8.625	7.921	32.			0	948.		

Sales/Rental/3rd Party (HES)

Description	Qty	Qty uom	Depth	Supplier
PLUG,CMTG, TOP, 8 5/8, HWE, 7.20 MIN/8.09 MA	1	EA		
PORT. DAS W/CEMWIN; ACQUIRE W/HES, ZI	1	JOB		
ADC (AUTO DENSITY CTRL) SYS, /JOB, ZI	1	JOB		

Tools and Accessories

Type	Size	Qty	Make	Depth	Type	Size	Qty	Make	Depth	Type	Size	Qty	Make
Guide Shoe					Packer					Top Plug	8 5/8	1	HES
Float Shoe					Bridge Plug					Bottom Plug			
Float Collar					Retainer					SSR plug set			
Insert Float										Plug Container	8 5/8	1	HES
Stage Tool										Centralizers			

Miscellaneous Materials

Gelling Agt	Conc	Surfactant	Conc	Acid Type	Qty	Conc %
Treatment Fld	Conc	Inhibitor	Conc	Sand Type	Size	Qty

Fluid Data									
Stage/Plug #: 1									
Fluid #	Stage Type	Fluid Name	Qty	Qty uom	Mixing Density lbm/gal	Yield ft ³ /sk	Mix Fluid Gal/sk	Rate bbl/min	Total Mix Fluid Gal/sk
1	WATER SPACER		20.00	bbl	.	.0	.0	.0	
2	Lead Cement	VERSACEM (TM) SYSTEM (452010)	125.0	sacks	12.3	2.38	13.75		
3	Tail Cement	SWIFTCEM (TM) SYSTEM (452990)	205.0	sacks	14.2	1.43	6.88		
4	DISPLACEMENT		55.10	bbl	8.33	.0	.0	.0	
Calculated Values		Pressures		Volumes					
Displacement	55.1	Shut In: Instant		Lost Returns	No	Cement Slurry	105.2	Pad	
Top Of Cement	0	5 Min		Cement Returns	31	Actual Displacement	55.1	Treatment	
Frac Gradient		15 Min		Spacers		Load and Breakdown		Total Job	
Rates									
Circulating		Mixing	8	Displacement	10	Avg. Job	9		
Cement Left In Pipe	Amount	43 ft	Reason	Shoe Joint					
Frac Ring # 1 @	ID	Frac ring # 2 @	ID	Frac Ring # 3 @	ID	Frac Ring # 4 @	ID		
The Information Stated Herein Is Correct				Customer Representative Signature					

The Road to Excellence Starts with Safety

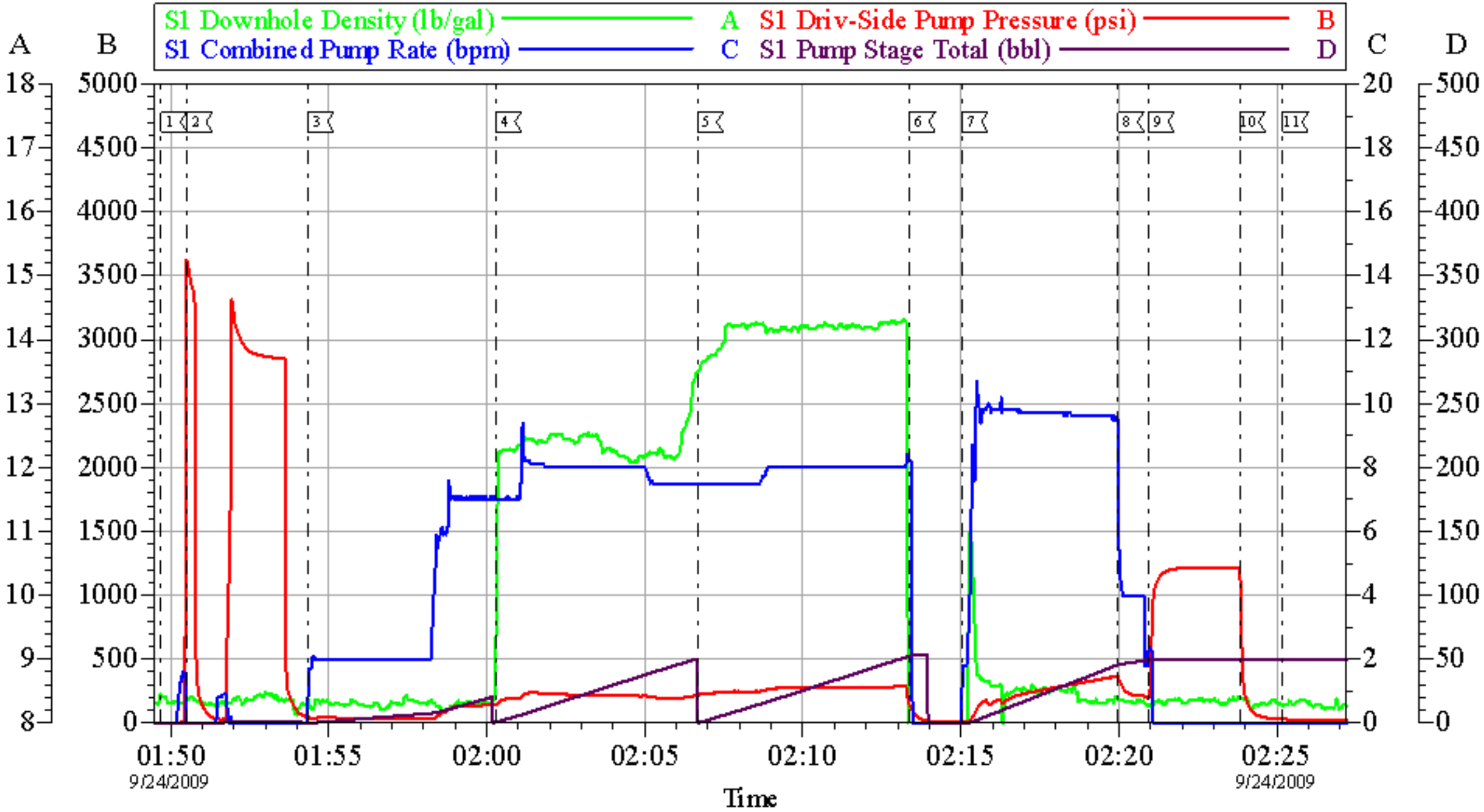
Sold To #: 344919	Ship To #: 344919	Quote #:	Sales Order #: 6891097
Customer: LARAMIE ENERGY II LLC EBUSINESS		Customer Rep: CLAUSSEN, KELLY	
Well Name: Reppo		Well #: 34-14B	API/UWI #:
Field: PICEANCE	City (SAP): DENBEQUE	County/Parish: Garfield	State: Colorado
Legal Description:			
Lat: N 0 deg. OR N 0 deg. 0 min. 0 secs.		Long: E 0 deg. OR E 0 deg. 0 min. 0 secs.	
Contractor: Precision		Rig/Platform Name/Num: Precision 706	
Job Purpose: Cement Surface Casing			Ticket Amount:
Well Type: Development Well		Job Type: Cement Surface Casing	
Sales Person: HARTLEY, RICHARD		Srvc Supervisor: NELSON, RYAN	MBU ID Emp #: 386514

Activity Description	Date/Time	Cht #	Rate bbl/min	Volume bbl		Pressure psig		Comments
				Stage	Total	Tubing	Casing	
Call Out	09/23/2009 19:00							
Arrive At Loc	09/23/2009 22:00							Rig running casing
Assessment Of Location Safety Meeting	09/23/2009 22:05							
Pre-Rig Up Safety Meeting	09/24/2009 00:45							
Rig-Up Equipment	09/24/2009 00:50							
Pre-Job Safety Meeting	09/24/2009 01:30							
Start Job	09/24/2009 01:49							TD- 950' TP-948' SJ-43' CASING 8 5/8" 32# J-55 HOLE 12 1/4" MUD 9
Test Lines	09/24/2009 01:49						3200.0	
Pump Spacer 1	09/24/2009 01:52		8	20			170.0	Fresh water
Pump Lead Cement	09/24/2009 01:58		8	53			280.0	125 sks 12.3 ppg 2.38 yield 13.76 gal/sk
Pump Tail Cement	09/24/2009 02:05		8	52.2			350.0	205 sks 14.2 ppg 1.43 yield 6.88 gal/sk
Shutdown	09/24/2009 02:11							
Drop Top Plug	09/24/2009 02:12							
Pump Displacement	09/24/2009 02:13		10	55.1			437.0	Fresh Water
Cement Returns to Surface	09/24/2009 02:16							Well circulated 31 bbls of cement to surface
Slow Rate	09/24/2009 02:18		2	45			330.0	
Bump Plug	09/24/2009 02:19		2	55.1			1378.0	

Activity Description	Date/Time	Cht #	Rate bbl/min	Volume bbl		Pressure psig		Comments
				Stage	Total	Tubing	Casing	
Check Floats	09/24/2009 02:22							Floats holding
End Job	09/24/2009 02:25							Well was circulated prior to the job. Good returns throughout the job. Pipe was static throughout the job. Thank you for using Halliburton-Ryan Nelson & Crew

Laramie 2

8 5/8" Surface



Local Event Log			
1 Start Job	01:49:41	2 Test Lines	01:50:30
3 Pump Spacer	01:54:20	4 Pump Lead Cement	02:00:17
5 Pump Tail Cement	02:06:40	6 Shut Down/Drop Plug	02:13:22
7 Pump Displacement	02:15:02	8 Slow Rate	02:19:59
9 Bump Plug	02:20:56	10 Check Floats	02:23:49
11 End Job	02:25:11		

Customer: Laramie 2	Job Date: 24-Sep-2009	Sales Order #: 6891097
Well Description: Reppo 34-14B	Job Type: Surface	ADC Used: Yes
Company Rep: Kelly Claussen	Cement Supervisor: Ryan Nelson	Elite #: 2