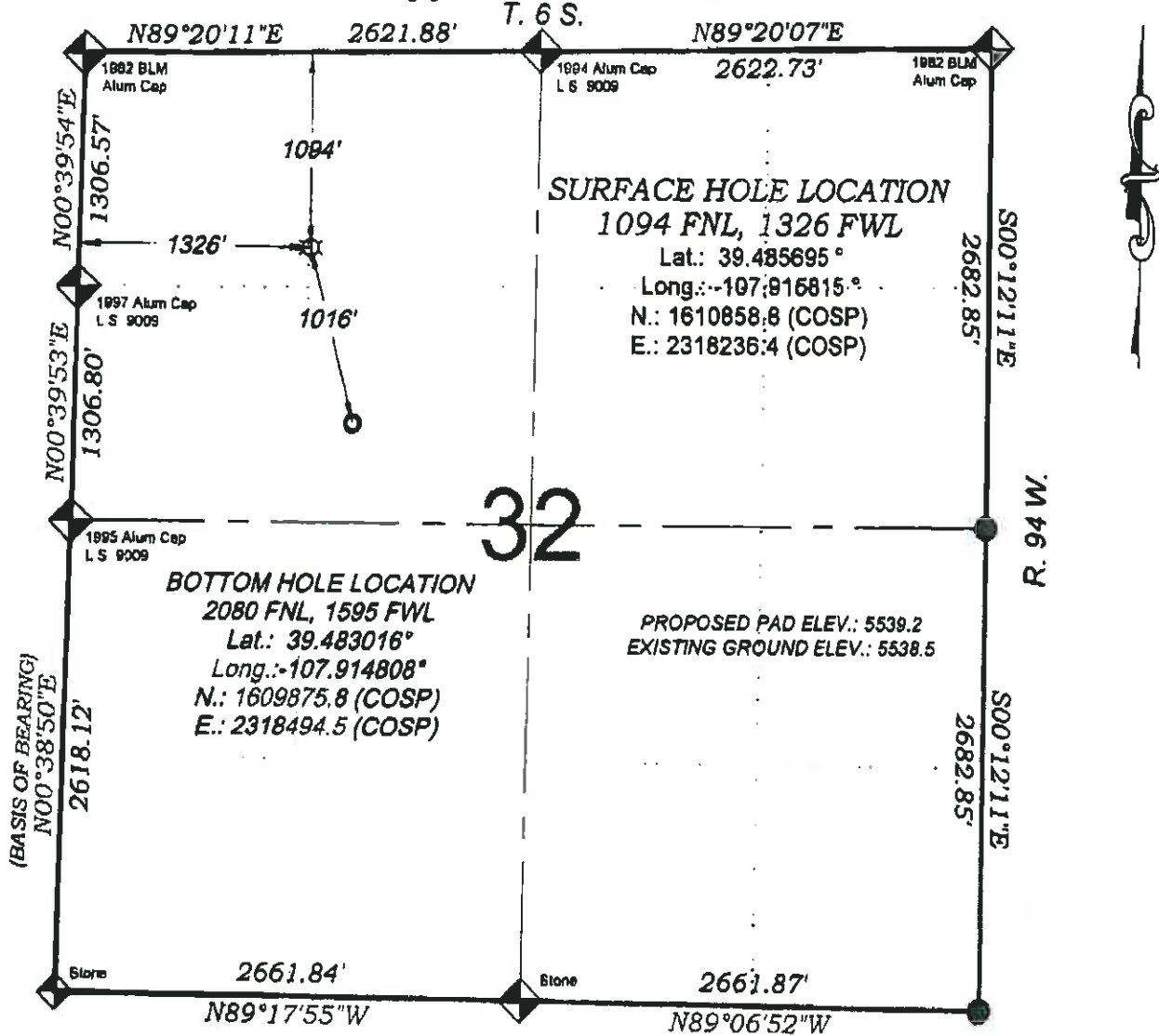


Duggan RWF 522-32



SURFACE HOLE LOCATION

1094 FNL, 1326 FWL

Lat.: 39.485695°

Long.: -107.916815°

N.: 1610858.8 (COSP)

E.: 2318236.4 (COSP)

BOTTOM HOLE LOCATION

2080 FNL, 1595 FWL

Lat.: 39.483016°

Long.: -107.914808°

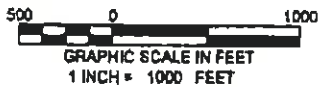
N.: 1609875.8 (COSP)

E.: 2318494.5 (COSP)

PROPOSED PAD ELEV.: 5539.2
EXISTING GROUND ELEV.: 5538.5

32

THERE ARE NO VISIBLE IMPROVEMENTS WITHIN 400' OF THIS LOCATION



- LEGEND -

FIELD LOCATED SECTION MONUMENTS AS DESCRIBED

FIELD SURVEYED WELL LOCATION

CALCULATED BOTTOM HOLE LOCATION

CALCULATED SECTION CORNER LOCATION

NOTES

- 1) ELEVATIONS BASED ON N.A.V.D. 1988 PUBLISHED COORDINATES
- 2) LATITUDES AND LONGITUDES ARE BASED ON NAD 83, PUBLISHED COORDINATES
- 3) STATE PLANE COORDINATES ARE BASED ON COLORADO CENTRAL ZONE, U.S. SURVEY FEET
- 4) ELEVATION MASK SET TO 15"
- 5) GPS OPERATOR J. KIRKPATRICK, OBSERVED A PDOP 1.8 ON SURVEY POINT NUMBER 160004.
- 6) SURFACE AND BOTTOM HOLE LOCATIONS ARE MEASURED 90° FROM SECTION LINES

WELL LOCATION PLAT Prepared for:

Williams Williams Production, RMT

NE1/4 NW1/4, SECTION 32
T. 6 S., R. 94 W. of the 6th P.M.
GARFIELD COUNTY, COLORADO

SURVEYORS STATEMENT

I, MICHAEL J. LANGHORNE, A REGISTERED LAND SURVEYOR IN THE STATE OF COLORADO DO HEREBY CERTIFY THAT THE SURVEY SHOWN HEREON WAS PREPARED UNDER MY DIRECT SUPERVISION AND HAS BEEN STAKED ON THE GROUND AS SHOWN ON THE PLAT AND CHECKING THAT THIS MAP IS A TRUE REPRESENTATION THEREOF.

Michael J. Langhorne
36572

MICHAEL J. LANGHORNE, COLORADO REGISTRATION NO. 36572
FOR AND ON BEHALF OF
BOOKCLIFF SURVEY SERVICES, INC.

REFERENCES

- 1) PARTIALLY SURVEYED T. 6 S., R. 94 W., 6th P.M (GLO PLAT)
- 2) U.S.G.S. QUAD: RULISON, CO

SURVEY DATE: 5/16/11
MAP DATE: 6/29/11
SCALE: 1" = 1000'
PLAT: 1 of 1
PROJECT: Williams Valley

