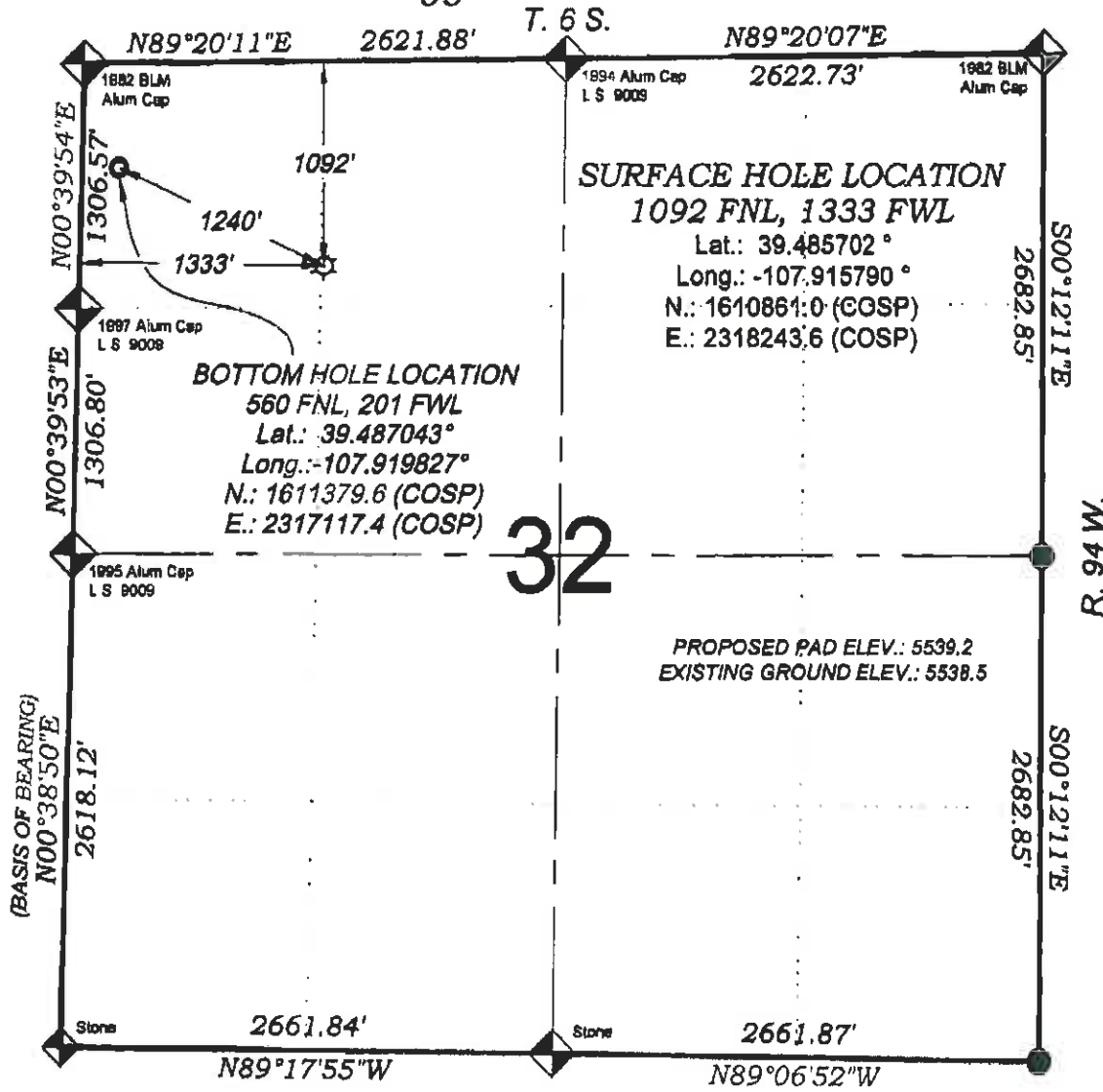


Duggan RWF 311-32



32

SURFACE HOLE LOCATION
 1092 FNL, 1333 FWL
 Lat.: 39.485702 °
 Long.: -107.915790 °
 N.: 1610861.0 (COSP)
 E.: 2318243.6 (COSP)

BOTTOM HOLE LOCATION
 560 FNL, 201 FWL
 Lat.: 39.487043 °
 Long.: -107.919827 °
 N.: 1611379.6 (COSP)
 E.: 2317117.4 (COSP)

PROPOSED PAD ELEV.: 5539.2
 EXISTING GROUND ELEV.: 5538.5

THERE ARE NO VISIBLE IMPROVEMENTS WITHIN 400' OF THIS LOCATION



- LEGEND -

- FIELD LOCATED SECTION MONUMENTS AS DESCRIBED
- FIELD SURVEYED WELL LOCATION
- CALCULATED BOTTOM HOLE LOCATION
- CALCULATED SECTION CORNER LOCATION

SURVEYORS STATEMENT

I, MICHAEL J. LANGHORNE, A REGISTERED LAND SURVEYOR IN THE STATE OF COLORADO DO HEREBY CERTIFY THAT THE SURVEY SHOWN HEREON WAS PREPARED UNDER MY DIRECT SUPERVISION AND HAS BEEN STAKED ON THE GROUND AS SHOWN ON THE PLAT AND CHECKING THAT THIS MAP IS A TRUE REPRESENTATION THEREOF.

Michael J. Langhorne
 36572

MICHAEL J. LANGHORNE, COLORADO REGISTRATION NO. 36572
 FOR AND ON BEHALF OF
 BOOKCLIFF SURVEY SERVICES, INC.

REFERENCES

- 1) PARTIALLY SURVEYED T. 6 S., R. 94 W., 6th P.M (GLO PLAT)
- 2) U.S.G.S. QUAD: RULISON, CO

NOTES

- 1) ELEVATIONS BASED ON N.A.V.D. 1988 PUBLISHED COORDINATES.
- 2) LATITUDES AND LONGITUDES ARE BASE ON NAD 83, PUBLISHED COORDINATES
- 3) STATE PLANE COORDINATES ARE BASED ON COLORADO CENTRAL ZONE, U.S. SURVEY FEET.
- 4) ELEVATION MASK SET TO 15"
- 5) OPS OPERATOR J. KIRKPATRICK, OBSERVED A PDOP 1.8 ON SURVEY POINT NUMBER 160004.
- 6) SURFACE AND BOTTOM HOLE LOCATIONS ARE MEASURED 90° FROM SECTION LINES.

WELL LOCATION PLAT Prepared for:

Williams. Williams Production, RMT

NE1/4 NW1/4, SECTION 32
 T. 6 S., R. 94 W. of the 6th. P.M.
 GARFIELD COUNTY, COLORADO

BOOKCLIFF
 Survey Services, Inc.

3100 West Tenth Street
 Pueblo, Colorado 81001
 Ph: (719) 839-2720
 Fax: (719) 839-2774

SURVEY DATE: 5/16/11
 MAP DATE: 6/29/11
 SCALE: 1" = 1000'
 PLAT: 1 of 1
 PROJECT: Williams Valley