

LARAMIE ENERGY II LLC EBUSINESS  
1512 LARIMER ST-DO NOT MAIL  
DENVER, Colorado

FURR 22-15A

GREYWOLF 706

## Post Job Report

### Cement Surface Casing

Prepared for:  
Date Prepared:  
Version: 1

Service Supervisor: CRONKHITE, KENT

Submitted by:

### The Road to Excellence Starts with Safety

<b>Sold To #:</b> 344919		<b>Ship To #:</b> 2731353		<b>Quote #:</b>		<b>Sales Order #:</b> 6881867	
<b>Customer:</b> LARAMIE ENERGY II LLC EBUSINESS				<b>Customer Rep:</b> CLAUSSEN, CORY			
<b>Well Name:</b> FURR			<b>Well #:</b> 22-15A			<b>API/UWI #:</b>	
<b>Field:</b> PICEANCE		<b>City (SAP):</b> RIFLE		<b>County/Parish:</b> Garfield		<b>State:</b> Colorado	
<b>Contractor:</b> GREYWOLF 706			<b>Rig/Platform Name/Num:</b> GREYWOLF 706				
<b>Job Purpose:</b> Cement Surface Casing							
<b>Well Type:</b> Development Well				<b>Job Type:</b> Cement Surface Casing			
<b>Sales Person:</b> METLI, MARSHALL			<b>Srv Supervisor:</b> CRONKHITE, KENT			<b>MBU ID Emp #:</b> 336769	
<b>Job Personnel</b>							
<b>HES Emp Name</b>	<b>Exp Hrs</b>	<b>Emp #</b>	<b>HES Emp Name</b>	<b>Exp Hrs</b>	<b>Emp #</b>	<b>HES Emp Name</b>	<b>Exp Hrs</b>
CLARKE, GERALD C	7	441763	CRONKHITE, KENT Alan	7	336769	GAMBLE, BENJAMIN T	7
KUKUS, CHRISTOPHER A	7	413952	NYE, KEVEN R	7	460558	PONDER, THOMAS Lynn	7
<b>Equipment</b>							
<b>HES Unit #</b>	<b>Distance-1 way</b>	<b>HES Unit #</b>	<b>Distance-1 way</b>	<b>HES Unit #</b>	<b>Distance-1 way</b>	<b>HES Unit #</b>	<b>Distance-1 way</b>
10296152C	85 mile	10533645	85 mile	10876398	85 mile	10897797	85 mile
10951246	85 mile	11139328	85 mile				
<b>Job Hours</b>							
<b>Date</b>	<b>On Location Hours</b>	<b>Operating Hours</b>	<b>Date</b>	<b>On Location Hours</b>	<b>Operating Hours</b>	<b>Date</b>	<b>On Location Hours</b>
9/8/09	7	4					
<b>TOTAL</b>			<i>Total is the sum of each column separately</i>				
<b>Job</b>				<b>Job Times</b>			
<b>Formation Name</b>				<b>Date</b>		<b>Time</b>	<b>Time Zone</b>
<b>Formation Depth (MD)</b>	<b>Top</b>	<b>Bottom</b>	<b>935</b>	<b>Called Out</b>	08 - Sep - 2009	07:45	MST
<b>Form Type</b>	<b>BHST</b>			<b>On Location</b>	08 - Sep - 2009	11:00	MST
<b>Job depth MD</b>	935. m	<b>Job Depth TVD</b>	939.5 m	<b>Job Started</b>	08 - Sep - 2009	00:00	MST
<b>Water Depth</b>		<b>Wk Ht Above Floor</b>	5. m	<b>Job Completed</b>	08 - Sep - 2009	00:00	MST
<b>Perforation Depth (MD)</b>	<b>From</b>	<b>To</b>		<b>Departed Loc</b>	08 - Sep - 2009	00:00	MST
<b>Well Data</b>							
<b>Description</b>	<b>New / Used</b>	<b>Max pressure MPa</b>	<b>Size mm</b>	<b>ID mm</b>	<b>Weight kg/m</b>	<b>Thread</b>	<b>Grade</b>
<b>Sales/Rental/3<sup>rd</sup> Party (HES)</b>							
<b>Description</b>				<b>Qty</b>	<b>Qty uom</b>	<b>Depth</b>	<b>Supplier</b>
PLUG,CMTG, TOP, 8 5/8, HW, 7.20 MIN/8.09 MA				1	EA		
PORT. DAS W/CEMWIN; ACQUIRE W/HES, ZI				1	JOB		
ADC (AUTO DENSITY CTRL) SYS, /JOB, ZI				1	JOB		
<b>Tools and Accessories</b>							
<b>Type</b>	<b>Size</b>	<b>Qty</b>	<b>Make</b>	<b>Depth</b>	<b>Type</b>	<b>Size</b>	<b>Qty</b>
Guide Shoe					Packer		
Float Shoe					Bridge Plug		
Float Collar					Retainer		
Insert Float							
Stage Tool							
<b>Miscellaneous Materials</b>							
<b>Gelling Agt</b>		<b>Conc</b>		<b>Surfactant</b>		<b>Conc</b>	
<b>Treatment Fld</b>		<b>Conc</b>		<b>Inhibitor</b>		<b>Conc</b>	
				<b>Acid Type</b>		<b>Qty</b>	
				<b>Sand Type</b>		<b>Size</b>	
						<b>Conc</b>	<b>%</b>
						<b>Qty</b>	

Fluid Data										
Stage/Plug #: 1										
Fluid #	Stage Type	Fluid Name	Qty	Qty uom	Mixing Density kg/m3	Yield m3/sk	Mix Fluid m3/tonne	Rate m3/min	Total Mix Fluid m3/tonne	
1	WATER SPACER		20	bbl	.	.0	.0	6		
2	Lead Cement	VERSACEM (TM) SYSTEM (452010)	125	sacks	12.3	2.38	13.75	6		
		CAL-SEAL 60, 50 LB BAG (101217146)								
		ECONOLITE (100001580)								
		VERSASET, 55 LB SK (101376573)								
		SALT, 100 LB BAG (100003652)								
		POLY-E-FLAKE (101216940)								
		D-AIR 3000 (101007446)								
		FRESH WATER								
3	Tail Cement	SWIFTCEM (TM) SYSTEM (452990)	200	sacks	14.2	1.43	6.88	6	6.72	
		6.715 Gal	FRESH WATER							
4	DISPLACEMENT		55	bbl	.	.0	.0	8		
Calculated Values		Pressures		Volumes						
Displacement	55.5	Shut In: Instant		Lost Returns		Cement Slurry	102	Pad		
Top Of Cement	SURFACE	5 Min		Cement Returns	30	Actual Displacement	55	Treatment		
Frac Gradient		15 Min		Spacers	20	Load and Breakdown		Total Job	177	
Rates										
Circulating	RIG	Mixing	6	Displacement	8	Avg. Job	6			
Cement Left In Pipe	Amount	26.60 ft	Reason	Shoe Joint						
Frac Ring # 1 @	ID	Frac ring # 2 @	ID	Frac Ring # 3 @	ID	Frac Ring # 4 @	ID			
The Information Stated Herein Is Correct				Customer Representative Signature						

*The Road to Excellence Starts with Safety*

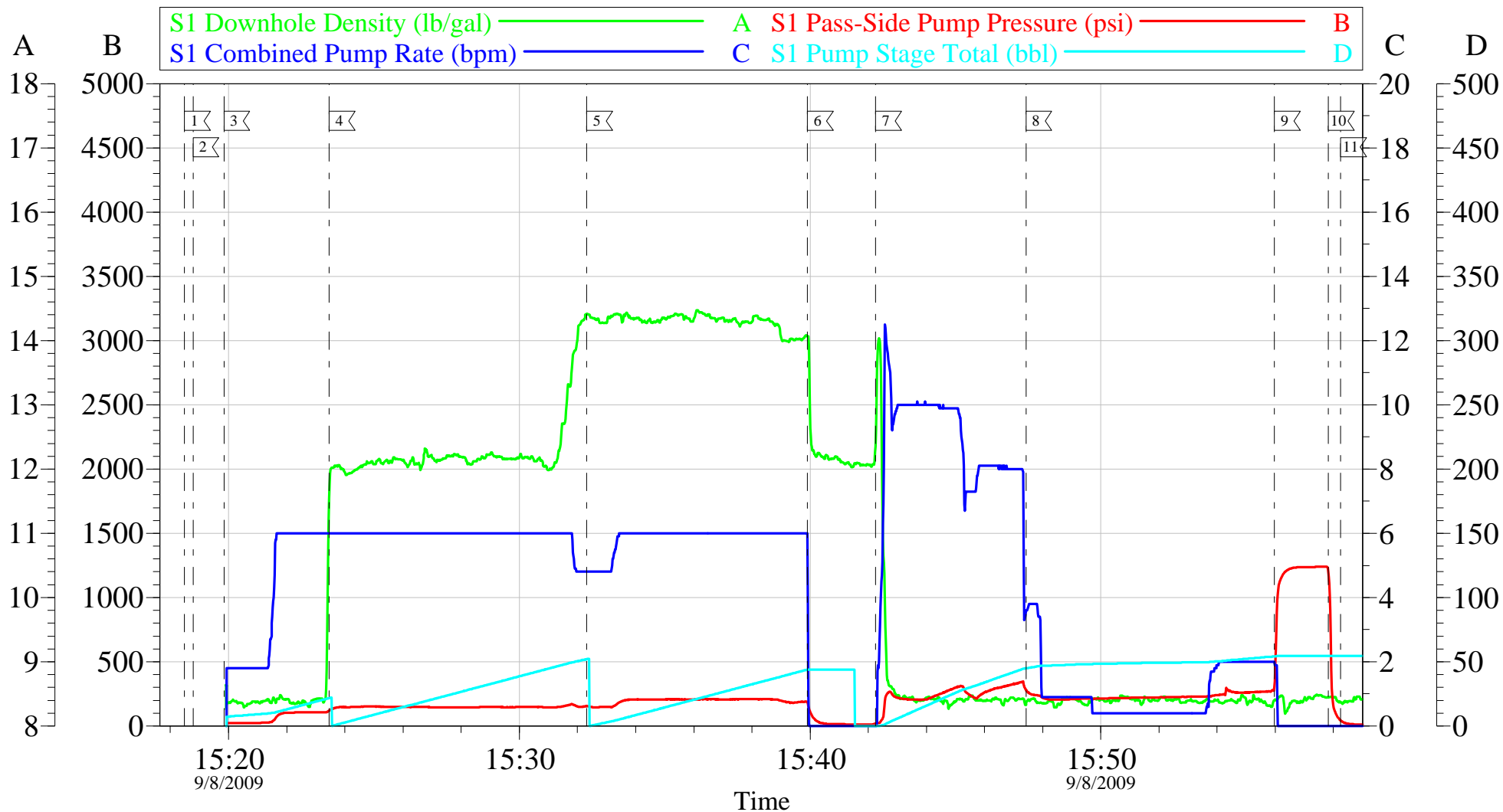
Sold To #: 344919		Ship To #: 2731353		Quote #:		Sales Order #: 6881867	
Customer: LARAMIE ENERGY II LLC EBUSINESS				Customer Rep: CLAUSSEN, CORY			
Well Name: FURR			Well #: 22-15A		API/UWI #:		
Field: PICEANCE		City (SAP): RIFLE		County/Parish: Garfield		State: Colorado	
Legal Description:							
Lat: N 0 deg. OR N 0 deg. 0 min. 0 secs.				Long: E 0 deg. OR E 0 deg. 0 min. 0 secs.			
Contractor: GREYWOLF 706			Rig/Platform Name/Num: GREYWOLF 706				
Job Purpose: Cement Surface Casing					Ticket Amount:		
Well Type: Development Well			Job Type: Cement Surface Casing				
Sales Person: METLI, MARSHALL			Srvc Supervisor: CRONKHITE, KENT			MBU ID Emp #: 336769	

Activity Description	Date/Time	Cht #	Rate m3/min	Volume m3		Pressure MPa		Comments
				Stage	Total	Tubing	Casing	
Call Out	09/08/2009 07:45							elite 9
Depart Yard Safety Meeting	09/08/2009 08:55							
Crew Leave Yard	09/08/2009 09:00							
Arrive At Loc	09/08/2009 11:00							ARRIVED EARLY DID NOT START CHARGE TIME UNTIL 1200 ON LOCATION TIME
Assessment Of Location Safety Meeting	09/08/2009 11:05							
Pre-Rig Up Safety Meeting	09/08/2009 11:10							
Rig-Up Equipment	09/08/2009 14:00							
Pre-Job Safety Meeting	09/08/2009 15:08							
Rig-Up Completed	09/08/2009 15:18							
Start Job	09/08/2009 15:18							TD 935, TP 939.51, SJ 26.60, MUD 9.4, HOLE 12 1/4
Test Lines	09/08/2009 15:18					2600.0		
Pump Spacer	09/08/2009 15:19		6	20	20		120.0	H2O
Pump Lead Cement	09/08/2009 15:23		6	52.9	52		147.0	125 SKS, 12.3 PPG, 2.38 YIELD, 13.75 GAL/SK
Pump Tail Cement	09/08/2009 15:32		6	50.9	50		180.0	200 SKS, 14.2 PPG, 1.43 YIELD, 6.88 GAL/SK
Shutdown	09/08/2009 15:39							DROP TOP PLUG

Activity Description	Date/Time	Cht #	Rate m3/min	Volume m3		Pressure MPa		Comments
				Stage	Total	Tubing	Casing	
Pump Displacement	09/08/2009 15:42		8	55.5			300.0	H2O
Slow Rate	09/08/2009 15:47		2	45	45		300.0	
Bump Plug	09/08/2009 15:55		2	55.5	55		1300.0	
Check Floats	09/08/2009 15:57							FLOATS HELD 1/2 BBL BACK
End Job	09/08/2009 15:58							GOOD CIRCULATION THROUGH OUT JOB, CHAINED DOWN HEAD, 30 BBLS OF CEMENT BACK TO SURFACE
Pre-Rig Down Safety Meeting	09/08/2009 16:00							
Rig-Down Equipment	09/08/2009 16:05							

# LARAMIE ENERGY

## 8 5/8 SURFACE



Local Event Log					
1	TEST LINES	15:18:29	2	START JOB	15:18:47
3	PUMP SPACER	15:19:50	4	PUMP LEAD CEMENT	15:23:28
5	PUMP TAIL CEMENT	15:32:19	6	SHUT DOWN/DROP PLUG	15:39:54
7	PUMP DISPLACEMENT	15:42:15	8	SLOW RATE	15:47:25
9	BUMP PLUG	15:55:59	10	CHECK FLOATS/FLOATS HELD	15:58:15
11	END JOB				

Customer:	LARAMIE ENERGY	Job Date:	08-Sep-2009	Sales Order #:	6881867
Well Description:	FURR 22-15A	Job Type:	8 5/8 SURFACE	ADC Used:	YES
Company Rep:	CORY CLAUSSEN	Cement Supervisor:	KENT CRONKHITE	Elite #:	9