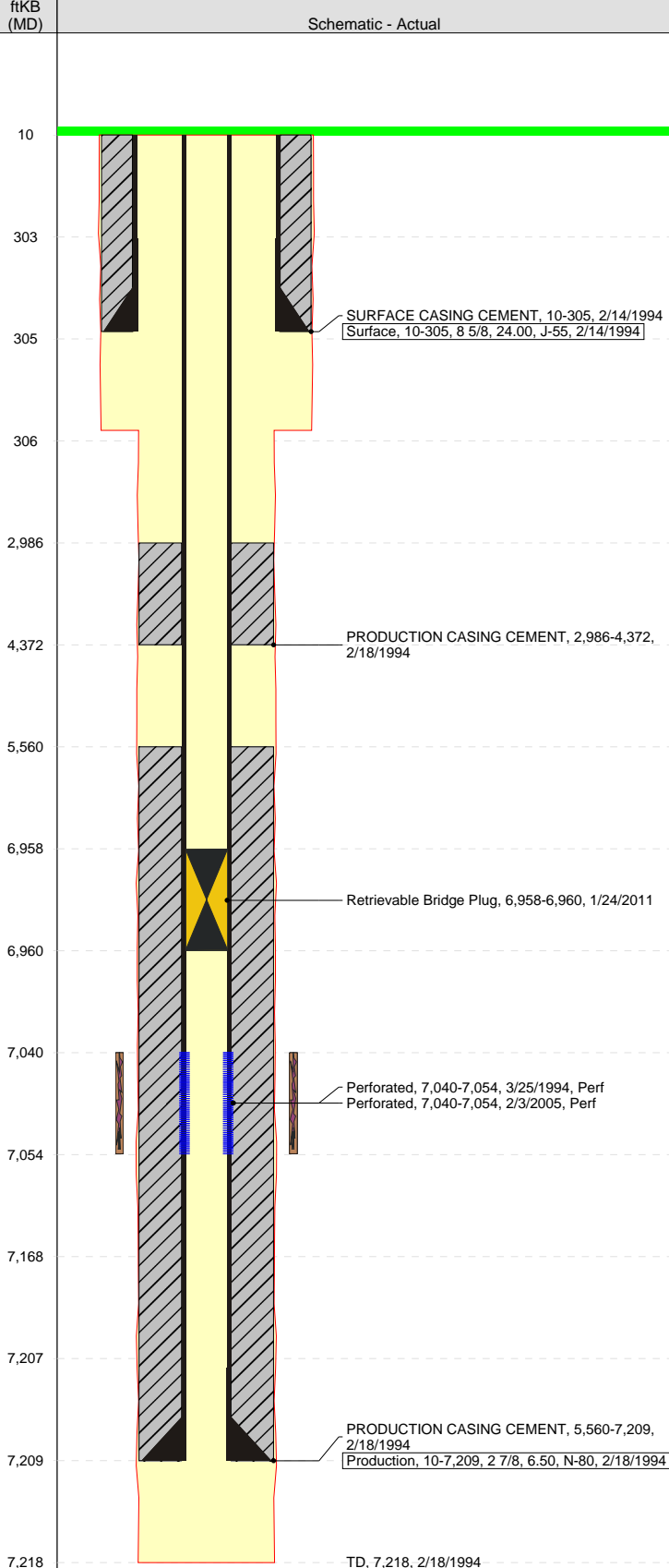


Wellbore Schematic Input Report

Well Name: SITZMAN E23-11

Well Config: VERTICAL - ORIGINAL HOLE, 8/9/2011 8:46:30 AM



Well Header

API		Business Unit		Spud Date		Well Configuration Type	
05-123-17853		WATTENBERG		2/13/1994		VERTICAL	
Orig KB Elev (ft)	KB - GL / ...	Quarter Quarter	Sec/Abs	Twn/Su...	Range	P & A Date	
4,722.00	10	NESW	23	6N	65W		

Comment

poor bond 5560-6154

Directions To Well

WCR 66 & WCR 47, N .5, W INTO

Bottom Hole Location

North-South Distance (ft)	From N or S Line	East-West Distance (ft)	From E or W Line

PBTDs

Date	Depth (ftKB)	Method	Comment
2/18/1994	7,168.0	TAG	

Wellbore Sections

Section	Size (in)	Act Top (ftKB)	Act Btm (ftKB)
SURFACE	12 1/4	10.0	306.0
PRODUCTION	7 7/8	306.0	7,218.0

Zone Statuses

Zone	Status Date	Status	Job
CODELL	5/12/1994	Flowing	DRILLING/COMPLETION - ORIGIN...
CODELL	3/17/2005	Flowing	RE-FRAC, 2/1/2005 00:00

Casing Strings

Surface, 305.0ftKB

Casing Description	Run Date	String ...	String Wt...	String ...	Top (ftKB)	Set Depth ...
Surface	2/14/1994	8 5/8	24.00	J-55	10.0	305.0

Production, 7,209.0ftKB

Casing Description	Run Date	String ...	String Wt...	String ...	Top (ftKB)	Set Depth ...
Production	2/18/1994	2 7/8	6.50	N-80	10.0	7,209.0

Cement

Description	Top (ftKB)	Bottom (ftKB)
SURFACE CASING CEMENT	10.0	305.0
PRODUCTION CASING CEMENT	2,986.0	4,372.0
PRODUCTION CASING CEMENT	5,560.0	7,209.0

Tubing Components

Item Description	OD (in)	Wt (lbs/ft)	Grade	Jts	Len (ft)	Btm (ftKB)	Bottom Depth (TVD) (ftKB)

Perforation Data

Zone	Bnch/Stg	Entered Shot Total	Top (ftKB)	Btm (ftKB)	Date
CODELL, ORIGINA...		56	7,040.0	7,054.0	2/3/2005
CODELL, ORIGINA...		42	7,040.0	7,054.0	3/25/1994

Stimulations & Treatments

Date	Zone	Primary Job Type
3/28/1994	CODELL, ORIGINAL HOLE	DRILLING/COMPLETION - ORIGINAL
Technical Result		Tech Result Details
		Tech Result Notes

Comment

Date	Zone	Primary Job Type
2/8/2004	CODELL, ORIGINAL HOLE	RE-FRAC
Technical Result		Tech Result Details
		Tech Result Notes

Comment

Other In Hole

Run Date	Description	OD (in)	Top (ftKB)	Btm (ftKB)
1/24/2011	Retrievable Bridge Plug	2.44	6,958.0	6,960.0

Logs

Date	Type	Top (ftKB)	Btm (ftKB)
2/17/1994	COMPENSATED DENSITY	3,200.0	7,840.0
2/17/1994	INDUCTION	490.0	7,840.0
3/24/1994	CEMENT BOND	2,800.0	7,158.0
1/14/2011	GYRO	10.0	7,013.0