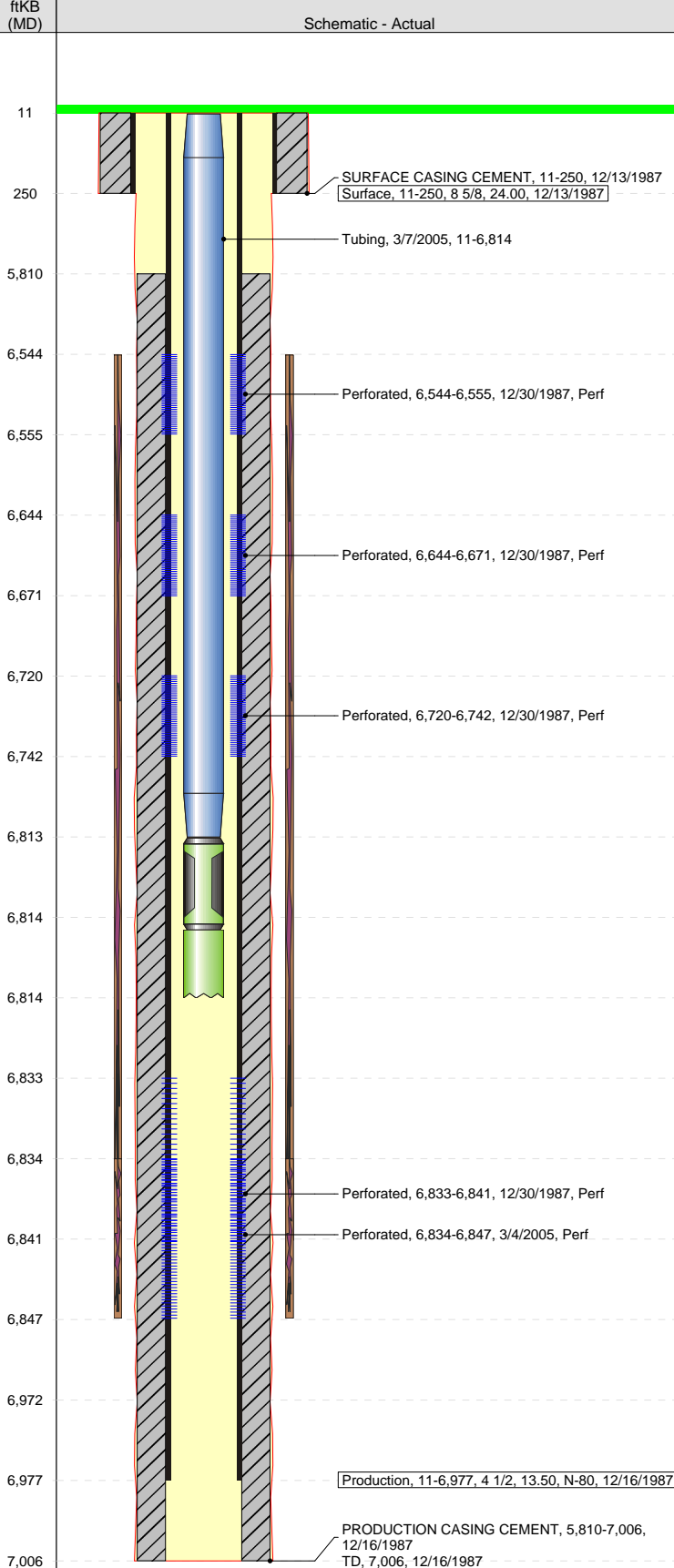


Wellbore Schematic Input Report

Well Name: PETRIKIN A34-07

Well Config: VERTICAL - ORIGINAL HOLE, 8/9/2011 8:41:49 AM



Well Header							
API 05-123-13727		Business Unit WATTENBERG		Spud Date 12/13/1987		Well Configuration Type VERTICAL	
Orig KB Elev (ft) 4,654.00		KB - GL / ... 11	Quarter Quarter SWNE	Sec/Abs 34	Twn/Su... 6N	Range 64W	P & A Date
Comment							
Directions To Well							
Bottom Hole Location							
North-South Distance (ft)		From N or S Line		East-West Distance (ft)		From E or W Line	
PBDTs							
Date		Depth (ftKB)	Method		Comment		
12/16/1987		6,972.0	CASING TALLY				
Wellbore Sections							
Section		Size (in)		Act Top (ftKB)		Act Btm (ftKB)	
SURFACE		12 1/4		11.0		250.0	
PRODUCTION		7 7/8		250.0		7,006.0	
Zone Statuses							
Zone		Status Date	Status		Job		
CODELL			PR				
Casing Strings							
Surface, 250.0ftKB							
Casing Description		Run Date	String ...	String Wt...	String ...	Top (ftKB)	Set Depth ...
Surface		12/13/1987	8 5/8	24.00		11.0	250.0
Production, 6,977.0ftKB							
Casing Description		Run Date	String ...	String Wt...	String ...	Top (ftKB)	Set Depth ...
Production		12/16/1987	4 1/2	13.50	N-80	11.0	6,977.0
Cement							
Description				Top (ftKB)		Bottom (ftKB)	
SURFACE CASING CEMENT				11.0		250.0	
Description				Top (ftKB)		Bottom (ftKB)	
PRODUCTION CASING CEMENT				5,810.0		7,006.0	
Tubing Components							
Item Description		OD (in)	Wt (lbs/ft)	Grade	Jts	Len (ft)	Bottom Depth (TVD) (ftKB)
Tubing		2 3/8	4.70		218	6,802.00	6,813.0
Pump Seating		2 3/8			1	0.70	6,813.7
Nipple							
Notched collar		2 3/8			1	0.30	6,814.0
Perforation Data							
Zone		Bnch/Stg	Entered Shot Total	Top (ftKB)		Btm (ftKB)	Date
NIOBRARA, ORIGI...		A	2	6,544.0		6,555.0	12/30/1987
NIOBRARA, ORIGI...		B	5	6,644.0		6,671.0	12/30/1987
NIOBRARA, ORIGI...		C	2	6,720.0		6,742.0	12/30/1987
CODELL, ORIGINA...			12	6,833.0		6,841.0	12/30/1987
CODELL, ORIGINA...			52	6,834.0		6,847.0	3/4/2005
Stimulations & Treatments							
Date		Zone		Primary Job Type			
12/30/1987		NIOBRARA-CODELL, ORIGINAL HOLE		DRILLING/COMPLETION - ORIGINAL			
Technical Result			Tech Result Details			Tech Result Notes	
Comment							
Date		Zone		Primary Job Type			
3/4/2005		CODELL, ORIGINAL HOLE		RE-FRAC			
Technical Result			Tech Result Details			Tech Result Notes	
Comment							
Other In Hole							
Run Date		Description			OD (in)	Top (ftKB)	Btm (ftKB)
Logs							
Date		Type			Top (ftKB)		Btm (ftKB)
12/16/1987		Compensated Density			250.0		6,993.0
12/16/1987		Induction			250.0		6,993.0
12/21/1987		Cement Bond			5,600.0		6,918.0