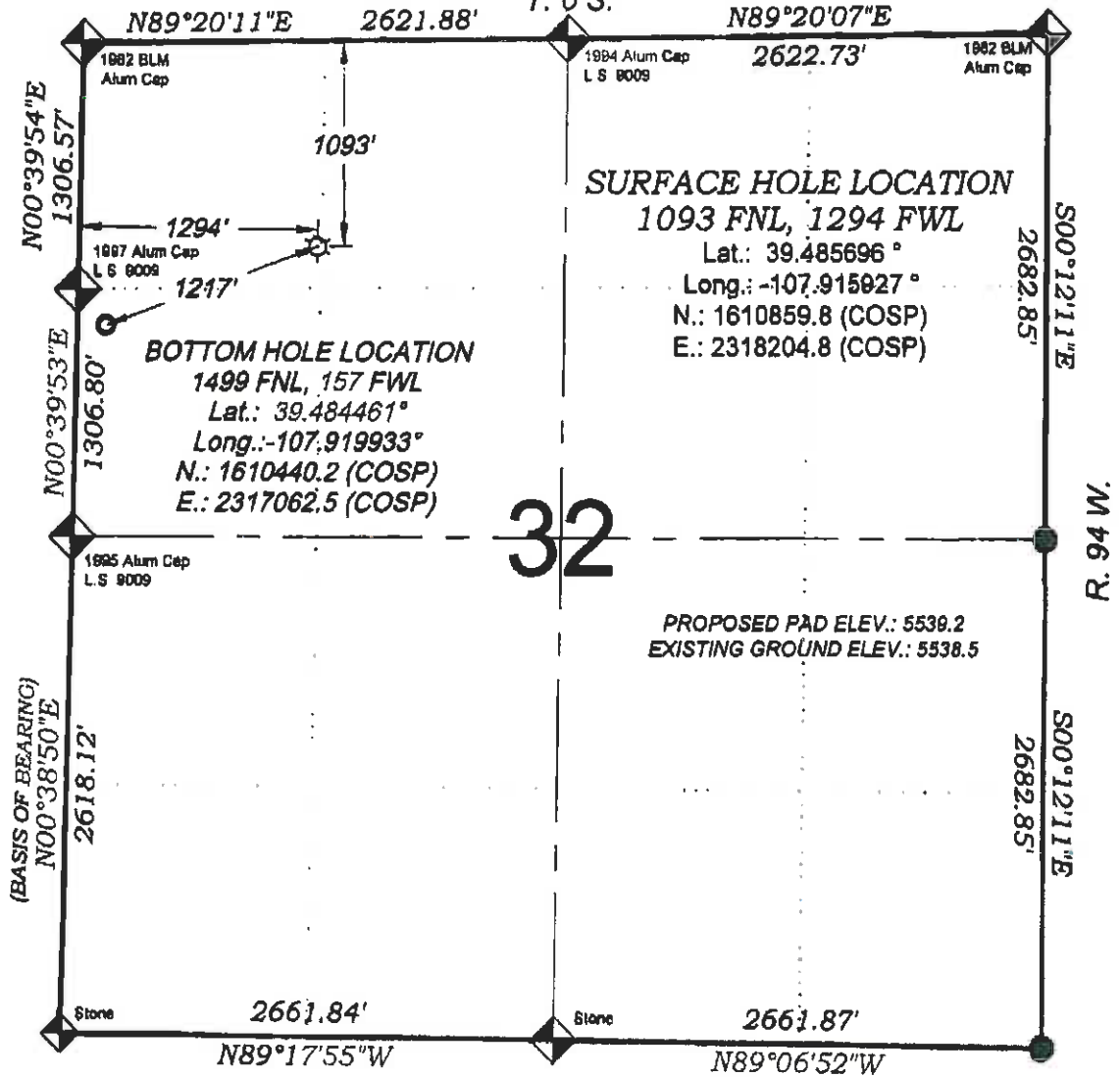


# Duggan RWF 312-32

T. 6 S.



## SURFACE HOLE LOCATION

1093 FNL, 1294 FWL

Lat.: 39.485696 °

Long.: -107.915927 °

N.: 1610859.8 (COSP)

E.: 2318204.8 (COSP)

## BOTTOM HOLE LOCATION

1499 FNL, 157 FWL

Lat.: 39.484461 °

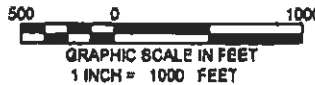
Long.: -107.919933 °

N.: 1610440.2 (COSP)

E.: 2317062.5 (COSP)

PROPOSED PAD ELEV.: 5539.2  
EXISTING GROUND ELEV.: 5538.5

THERE ARE NO VISIBLE  
IMPROVEMENTS WITHIN 400'  
OF THIS LOCATION



## - LEGEND -

FIELD LOCATED SECTION  
MONUMENTS AS DESCRIBED



FIELD SURVEYED  
WELL LOCATION



CALCULATED BOTTOM  
HOLE LOCATION



CALCULATED SECTION  
CORNER LOCATION



## SURVEYORS STATEMENT

I, MICHAEL J. LANGHORNE, A REGISTERED LAND SURVEYOR IN THE STATE OF COLORADO DO HEREBY CERTIFY THAT THE SURVEY SHOWN HEREON WAS PREPARED UNDER MY DIRECT SUPERVISION AND HAS BEEN STAKED ON THE GROUND AS SHOWN ON THE PLAT AND CHECKING THAT THIS MAP IS A TRUE REPRESENTATION THEREOF.

MICHAEL J. LANGHORNE, COLORADO REGISTRATION NO. 36572  
FOR AND ON BEHALF OF  
BOOKCLIFF SURVEY SERVICES, INC.

## REFERENCES

- PARTIALLY SURVEYED T. 6 S., R. 94 W., 6th P.M (GLO PLAT)
- U.S.G.S. QUAD: RULISON, CO

## NOTES

- ELEVATIONS BASED ON N.A. V.D. 1988 PUBLISHED COORDINATES.
- LATITUDES AND LONGITUDES ARE BASE ON NAD 83, PUBLISHED COORDINATES
- STATE PLANE COORDINATES ARE BASED ON COLORADO CENTRAL ZONE, U.S. SURVEY FEET.
- ELEVATION MASK SET TO 15"
- GPS OPERATOR J. KIRKPATRICK, OBSERVED A PDOP 1.8 ON SURVEY POINT NUMBER 16004.
- SURFACE AND BOTTOM HOLE LOCATIONS ARE MEASURED 90° FROM SECTION LINES.

WELL LOCATION PLAT Prepared for:

**Williams Williams Production, RMT**

NW1/4 NW1/4, SECTION 32  
T. 6 S., R. 94 W. of the 6th P.M.  
GARFIELD COUNTY, COLORADO

SURVEY DATE: 5/16/11  
MAP DATE: 6/29/11  
SCALE: 1" = 1000'  
PLAT: 1 of 1  
PROJECT: Williams Valley

**BOOKCLIFF**  
Survey Services, Inc.

Call Book Cliffs Direct  
Highly Accurate 31650  
Fax: 970-436-3730  
Fax (770) 429-3770