

Petroleum Field Services, LLC

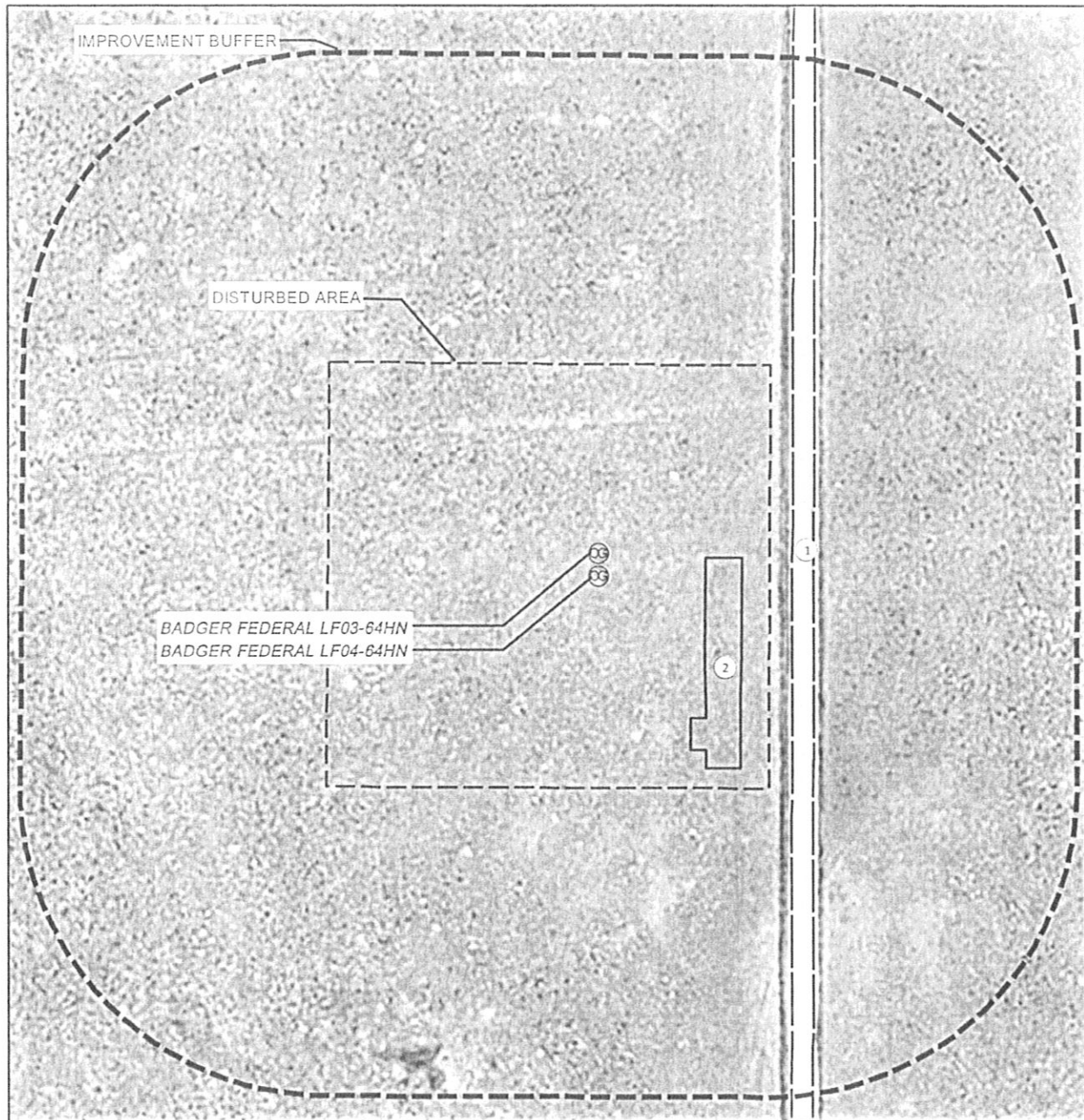
1801 W. 13th Ave.

Denver, CO 80204

## LOCATION DRAWING

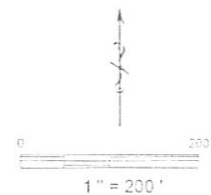
BADGER FEDERAL LF04-64HN

SECTION: 4  
TOWNSHIP: 8N  
RANGE: 60W



### IMPROVEMENTS:

- ① COUNTY ROAD 103 (WEST EDGE OF ROAD) 245' E.
- ② PROPOSED FACILITY 140' E.



NEAREST: BUILDING 5280' + NE (SHED) , WEST EDGE OF PUBLIC ROAD 245' E (CR 103), ABOVE GROUND UTILITY 5230' + SW (ABOVE GROUND POWER LINE), RAILROAD 5280' + SW, PROPERTY LINE 230' E.