



Colorado

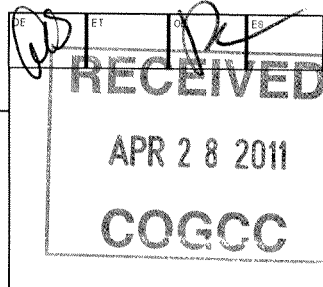
02612783

Conservation Commission

1120 Lincoln Street, Suite 801, Denver, Colorado 80203 Phone: (303)894-2100 Fax: (303)894-2109

### SUNDRY NOTICE

Submit original plus one copy. This form is to be used for general, technical and environmental sundry information. For proposed or completed operations, describe in full on Technical Information Page (Page 2 of this form.) Identify well or other facility by API Number or by OGCC Facility ID. Operator shall send an informational copy of all sundry notices for wells located in High Density Areas to the Local Government Designee (Rule 603b.)



1. OGCC Operator Number: 90450	4. Contact Name: Erich J. Schmidt
2. Name of Operator: True Oil LLC	Phone: 307-237-9301
3. Address: P. O. Box 2360	Fax: 307-266-0252
City: Casper State: WY Zip: 82602	
5. API Number 05- 081-07459-01	OGCC Facility ID Number
6. Well/Facility Name: Reservoir Draw	7. Well/Facility Number: #14-31B
8. Location (Qtr/Qtr, Sec, Twp, Rng, Meridian): SWSW Sec. 31, T12N-R96W, 6th PM	
9. County: Moffat	10. Field Name: Wildcat
11. Federal, Indian or State Lease Number: C-67086	

Complete the Attachment Checklist

OP OGCC

Survey Plat		
Directional Survey		
Surface Eqpm Diagram		
Technical Info Page		
Other		

### General Notice

☐ **CHANGE OF LOCATION:** Attach New Survey Plat (a change of surface qtr/qtr is substantive and requires a new permit)

Change of Surface Footage from Exterior Section Lines:	FNL/FSL	FEL/FWL
Change of Surface Footage to Exterior Section Lines:		
Change of Bottomhole Footage from Exterior Section Lines:		
Change of Bottomhole Footage to Exterior Section Lines:		

Bottomhole location Qtr/Qtr, Sec, Twp, Rng, Mer \_\_\_\_\_

Latitude \_\_\_\_\_ Distance to nearest property line \_\_\_\_\_ Distance to nearest bldg, public rd, utility or RR \_\_\_\_\_

Longitude \_\_\_\_\_ Distance to nearest lease line \_\_\_\_\_ Is location in a High Density Area (rule 603b)? Yes/No ☐

Ground Elevation \_\_\_\_\_ Distance to nearest well same formation \_\_\_\_\_ Surface owner consultation date: \_\_\_\_\_

### GPS DATA:

Date of Measurement \_\_\_\_\_ PDOP Reading \_\_\_\_\_ Instrument Operator's Name \_\_\_\_\_

☐ **CHANGE SPACING UNIT**

Formation	Formation Code	Spacing order number	Unit Acreage	Unit configuration

☐ **Remove from surface bond**  
Signed surface use agreement attached

<input type="checkbox"/> <b>CHANGE OF OPERATOR (prior to drilling):</b> Effective Date: _____ Plugging Bond: <input type="checkbox"/> Blanket <input type="checkbox"/> Individual	<input type="checkbox"/> <b>CHANGE WELL NAME</b> From: _____ To: _____ Effective Date: _____
---	---

<input type="checkbox"/> <b>ABANDONED LOCATION:</b> Was location ever built? <input type="checkbox"/> Yes <input type="checkbox"/> No Is site ready for inspection? <input type="checkbox"/> Yes <input type="checkbox"/> No Date Ready for Inspection: _____	<input type="checkbox"/> <b>NOTICE OF CONTINUED SHUT IN STATUS</b> Date well shut in or temporarily abandoned: _____ Has Production Equipment been removed from site? <input type="checkbox"/> Yes <input type="checkbox"/> No MIT required if shut in longer than two years. Date of last MIT _____
--	---

☐ **SPUD DATE:** \_\_\_\_\_

☐ **REQUEST FOR CONFIDENTIAL STATUS** (6 mos from date casing set)

☒ **SUBSEQUENT REPORT OF STAGE, SQUEEZE OR REMEDIAL CEMENT WORK** \*submit cbl and cement job summaries

Method used	Cementing tool setting/perf depth	Cement volume	Cement top	Cement bottom	Date
	N/A	125 sks	9087	11041	03/06/11

☐ **RECLAMATION:** Attach technical page describing final reclamation procedures per Rule 1004.

Final reclamation will commence on approximately \_\_\_\_\_ ☐ Final reclamation is completed and site is ready for inspection.

### Technical Engineering/Environmental Notice

☐ Notice of Intent  
Approximate Start Date: \_\_\_\_\_

☒ Report of Work Done  
Date Work Completed: 3-6-2011

Details of work must be described in full on Technical Information Page (Page 2 must be submitted.)

<input type="checkbox"/> Intent to Recomplete (submit form 2)	<input type="checkbox"/> Request to Vent or Flare	<input type="checkbox"/> E&P Waste Disposal
<input type="checkbox"/> Change Drilling Plans	<input type="checkbox"/> Repair Well	<input type="checkbox"/> Beneficial Reuse of E&P Waste
<input type="checkbox"/> Gross Interval Changed?	<input type="checkbox"/> Rule 502 variance requested	<input type="checkbox"/> Status Update/Change of Remediation Plans
<input checked="" type="checkbox"/> Casing/Cementing Program Change	<input type="checkbox"/> Other: _____	for Spills and Releases

I hereby certify that the statements made in this form are, to the best of my knowledge, true, correct and complete.

Signed: Erich J. Schmidt Date: April 25, 2011 Email: eschmidt@truecos.com

Print Name: Erich J. Schmidt Title: Petroleum Engineer

COGCC Approved: [Signature] Title EIT 3 Date: 8/3/2011

CONDITIONS OF APPROVAL, IF ANY:

\* -02 ?

TECHNICAL INFORMATION PAGE



OGCC USE ONLY

RECEIVED  
APR 28 2011  
COGCC

1. OGCC Operator Num 90450 API Numt 05-081-07459-01  
2. Name of Operator True Oil LLC OGCC Facility I  
3. Well/Facility Name Reservoir Draw Well/Facility Numt #14-31B  
4. Location (QtrQtr, Sec, Twp, Rng, ISWSW S. 31, T12N-R96W, 6th PM

This form is to be completed whenever a Sundry Notice is submitted requiring detailed report of work to be performed or completed. This form shall be transmitted within 30 days of work completed as a "subsequent" report and must accompany Form 4, page 1.

DESCRIBE PROPOSED OR COMPLETED OPERATIONS

Ran liner as follows (4 1/2" P110 13.5 #/ft) guide shoe/float, 1 jt, float collar, landing collar, 43 jts, Versaflex: Landed @ 11,041.01', top of LH @ 9,087.29'

Cemented as follows on : pumped 30 bbl spacer, LEAD cement 65 sks(EconoCem RS1, 13.5 ppg, 1.49 ft3/sk, 7.11 gal/sk, w/ the following additives - 1.5% Halliburton gel, 0.45 % HALAD(R)-344, 0.55 % HR-5), TAIL cement, 60 sks BondCem RS3(13.5 ppg, 1.79 ft3/sk, 8.47 gal/sk w/ the following additives 1.5 % Halliburton gel, 0.3 % HALAD(R)-344, 0.6 % HR-5, 20 %Sand -SSA-1 - Silica flour - 200 mesh) displaced w/ 96.2 bbl 2% KCL. Bumped plug @ 2,400 psig over circulating pressure(1,700 psig), floats held. Drop ball, release off liner hanger, displace cement out of casing.

Currently waiting on core analysis and weather to determine completion.

**HALLIBURTON**

**RECEIVED**

APR 28 2011

**COGCC**

**COPY**

---

**TRUE OIL COMPANY**

---

Reservoir Draw 14-31B  
MOFFAT  
Moffat County, Colorado

**Cement Production Liner**  
06-Mar-2011

**Post Job Report**

RECEIVED

APR 28 2011

COGCC

HALLIBURTON

## Cementing Job Summary

The Road to Excellence Starts with Safety

Sold To #: 306116	Ship To #: 2839147	Quote #:	Sales Order #: 7992112										
Customer: TRUE OIL COMPANY	Customer Rep: Workover, .												
Well Name: Reservoir Draw	Well #: 14-31B	API/UWI #: 05-081-07459											
Field: MOFFAT	City (SAP): CRAIG	County/Parish: Moffat	State: Colorado										
Legal Description: Section 31 Township 12N Range 96W													
Contractor: True	Rig/Platform Name/Num: True 22												
Job Purpose: Cement Production Liner													
Well Type: Development Well	Job Type: Cement Production Liner												
Sales Person: VOLNER, THOMAS	Srvc Supervisor: TIPPETTS, LLOYD	MBU ID Emp #: 441109											
Job Personnel													
HES Emp Name	Exp Hrs	Emp #	HES Emp Name	Exp Hrs	Emp #	HES Emp Name	Exp Hrs	Emp #					
CAUDILL, LOREN W	17	476757	DENT, JEROD Judd	17	457336	MCKIE, SHAWN D	17	358960					
MCNUTT, GILBERT D	17	455161	TIPPETTS, LLOYD Allen	17	441109	VASQUEZ, VICENTE	17	486817					
WILLOUGHBY, CHAD Ryan	17	122286											
Equipment													
HES Unit #	Distance-1 way	HES Unit #	Distance-1 way	HES Unit #	Distance-1 way	HES Unit #	Distance-1 way						
10265371C	180 mile	10322492C	180 mile	10592954C	180 mile	10680606	180 mile						
10744715C	180 mile	10951242	180 mile	11071575	180 mile	11139002	180 mile						
11262343	180 mile	11288821	180 mile	11288836	180 mile	11377690	180 mile						
Job Hours													
Date	On Location Hours	Operating Hours	Date	On Location Hours	Operating Hours	Date	On Location Hours	Operating Hours					
3/5/2011	5	0	3/6/2011	12	6								
TOTAL		Total is the sum of each column separately											
Job													
Formation Name				Job Times									
Formation Depth (MD) Top Bottom				Date Time Time Zone									
Form Type BHST 215 degF				Called Out 05 - Mar - 2011 13:00 MST									
Job depth MD 11062. ft Job Depth TVD				On Location 05 - Mar - 2011 19:00 MST									
Water Depth Wk Ht Above Floor 35. ft				Job Started 06 - Mar - 2011 06:50 MST									
Perforation Depth (MD) From To				Job Completed 06 - Mar - 2011 09:50 MST									
				Departed Loc 06 - Mar - 2011 13:00 MST									
Well Data													
Description	Max pressure psig	Size in	ID in	Weight lbm/ft	Thread	Grade	Top MD ft	Bottom MD ft	Top TVD ft	Bottom TVD ft			
Production Open Hole			6.125				9697.	11062					
Intermediate Casing		7.	6.276	26.		P-110	0	9697.					
Production Liner		4.5	3.92	13.5		P-110	9300.	11062					
Sales/Rental/3 <sup>rd</sup> Party (HES)													
Description				Qty	Qty uom	Depth	Supplier						
MICRO MATRIX RETARDER				2	GAL								
Tools and Accessories													
Type	Size	Qty	Make	Depth	Type	Size	Qty	Make	Depth	Type	Size	Qty	Make
Guide Shoe					Packer					Top Plug	4.5	1	HES
Float Shoe	4.5	1	HES	11062	Bridge Plug					Bottom Plug			
Float Collar	4.5	1	HES	11016.1	Retainer					SSR plug set			
Insert Float				6						Plug Container	4.5	1	HES
Stage Tool										Centralizers	4.5	24	HES

Miscellaneous Materials												
Gelling Agt		Conc		Surfactant		Conc		Acid Type		Qty		Conc %
Treatment Fld		Conc		Inhibitor		Conc		Sand Type		Size		Qty
Fluid Data												
Stage/Plug #: 1												
Fluid #	Stage Type	Fluid Name	Qty	Qty uom	Mixing Density lbm/gal	Yield ft3/sk	Mix Fluid Gal/sk	Rate bbl/min	Total Mix Fluid Gal/sk			
1	Tuned Spacer III	TUNED SPACER - SBM (13256)	30.00	bbl		9.9	.0	.0				
	1 lbm/bbl	BARITE, 100 LB SK (100003680)										
2	EconoCem RS1	ECONOCEM (TM) SYSTEM (452992)	65.0	sacks	13.5	1.49	7.11		7.11			
	1.5 %	HALLIBURTON GEL, 50 LB SK (100064040)										
	0.45 %	HALAD(R)-344, 50 LB (100003670)										
	0.55 %	HR-5, 50 LB SK (100005050)										
	7.155 Gal	FRESH WATER										
3	BondCem RS3	BONDCEM (TM) SYSTEM (452977)	60.0	sacks	13.5	1.79	8.47		8.47			
	1.5 %	HALLIBURTON GEL, 50 LB SK (100064040)										
	0.3 %	HALAD(R)-344, 50 LB (100003670)										
	0.6 %	HR-5, 50 LB SK (100005050)										
	20 %	SAND-SSA-1 - SILICA FLOUR - 200 MESH, BULK (100003691)										
	8.533 Gal	FRESH WATER										
4	TUNED SPACER III	TUNED SPACER III - SBM (483826)	5.00	bbl	9.9	.0	.0	.0				
	37.88 gal/bbl	FRESH WATER										
	77.2 lbm/bbl	BARITE, 100 LB SK (100003680)										
5	10.3 lb/gal WBM		18.00	bbl	8.4			.0				
6	TUNED SPACER III	TUNED SPACER III - SBM (483826)	10.00	bbl	9.9	.0	.0	.0				
	37.88 gal/bbl	FRESH WATER										
	77.2 lbm/bbl	BARITE, 100 LB SK (100003680)										
7	10.3 lb/gal WBM		96.17	bbl	8.4			.0				
Calculated Values			Pressures			Volumes						
Displacement	96.17	Shut In: Instant			Lost Returns	0	Cement Slurry	36.38	Pad			
Top Of Cement	9087	5 Min			Cement Returns	2	Actual Displacement	96.17	Treatment			
Frac Gradient		15 Min			Spacers	35	Load and Breakdown		Total Job	167.55		
Rates												
Circulating	5	Mixing		5	Displacement		5	Avg. Job		5		
Cement Left In Pipe	Amount 0 ft	Reason	Shoe Joint									
Frac Ring # 1 @	ID	Frac ring # 2 @	ID	Frac Ring # 3 @	ID	Frac Ring # 4 @	ID					
The Information Stated Herein Is Correct				Customer Representative Signature								

The Road to Excellence Starts with Safety

Sold To #: 306116		Ship To #: 2839147		Quote #:		Sales Order #: 7992112	
Customer: TRUE OIL COMPANY				Customer Rep: Workover, ..			
Well Name: Reservoir Draw		Well #: 14-31B		API/UWI #: 05-081-07459			
Field: MOFFAT	City (SAP): CRAIG	County/Parish: Moffat		State: Colorado			
Legal Description: Section 31 Township 12N Range 96W							
Lat: N 0 deg. OR N 0 deg. 0 min. 0 secs.				Long: E 0 deg. OR E 0 deg. 0 min. 0 secs.			
Contractor: True		Rig/Platform Name/Num: True 22					
Job Purpose: Cement Production Liner				Ticket Amount:			
Well Type: Development Well		Job Type: Cement Production Liner					
Sales Person: VOLNER, THOMAS		Srcv Supervisor: TIPPETTS, LLOYD		MBU ID Emp #: 441109			

Activity Description	Date/Time	Cht #	Rate bbl/min	Volume bbl		Pressure psig		Comments
				Stage	Total	Tubing	Casing	
Call Out	03/05/2011 13:00							HES CREW CALLED OUT.
Pre-Convoy Safety Meeting	03/05/2011 15:00							SAFETY MEETING WITH HES CREW. DISCUSS WEATHER, ROAD CONDITIONS, DIRECTIONS, HAZARDS, AND ALL HES POLICIES.
Depart from Service Center or Other Site	03/05/2011 15:20							DEPART ROCK SPRINGS YARD FOR TRUE OIL TRUE 22
Arrive At Loc	03/05/2011 19:00							HES CREW ARRIVED @ TRUE OIL TRUE 22
Safety Meeting - Pre Rig-Up	03/05/2011 19:30							SAFETY MEETING WITH HES CREW. DISCUSS SPOTING OF EQUIPMENT, HAZARDS, RIG-UP PROCEDURES AND HES POLICIES.
Rig-Up Equipment	03/06/2011 03:30							RIG-UP EQUIPMENT ON GROUND.
Safety Meeting - Pre Rig-Up	03/06/2011 04:34							SAFETY MEETING WITH HES CREW, RIG CREW, AND COMPANY REP. DISCUSS JOB PROCEDURES, HAZARDS, SAFETY CONCERNS, AND ALL HES POLICIES.
Rig-Up Equipment	03/06/2011 04:50							FINAL RIG-UP OF EQUIPMENT.

# HALLIBURTON

## Cementing Job Log

Activity Description	Date/Time	Cht #	Rate bbl/ min	Volume bbl		Pressure psig		Comments
				Stage	Total	Tubing	Casing	
Other	03/06/2011 05:50							4.5', 13.5#, P-110 CASING @ 11062", TOP OF HANGER 9087" 3.5', 13.3#, S-135 DRILL PIPE FROM 9087 TO SURFACE ON BOTTOM @ 0550 CIRCULATING @ 5 BARRELS/MIN WITH 0 UNITS OF GAS.
Pump Water	03/06/2011 06:50	1	2	5	5		265.7	PUMP 5 BARRELS WATER AHEAD TO FILL PUMPS AND LINES.
Pressure Test	03/06/2011 06:57	2					8000. 0	PRESSURE TEST HES IRON TO 8000 PSI
Other	03/06/2011 06:58	3						RELEASE PRESSURE.
Pump Spacer	03/06/2011 07:00	4	5	30	35		1581. 0	MIX AND 30 PUMP BARRELS TUNED SPACER @ 9.9 PPG
Pump Lead Cement	03/06/2011 07:06	5	5	17.25	17.25		2818. 0	MIX AND PUMP 65 SKS LEAD CEMENT @ 13.5 PPG, 1.49 CF/SK, 7.11 GPS
Pump Tail Cement	03/06/2011 07:11	6	5	19.13	36.38		2111. 0	MIX AND PUMP 60 SKS TAIL CEMENT @ 13.5 PPG, 1.79 CF/SK, 8.47 GPS
Shutdown	03/06/2011 07:14	7						SHUTDOWN
Other	03/06/2011 07:15	8						TOOL HAND DROPS DART.
Pump Water	03/06/2011 07:15	9						WASH PUMPS AND LINES TO PIT.
Pump Displacement	03/06/2011 07:19	10	5	5	5		.0	PUMP 5 BARRELS TUNED SPACER DISPLACEMENT.
Pump Displacement	03/06/2011 07:21	11	5	18	23		52.0	PUMP 18 BARRELS OF KCL WATER DISPLACEMENT
Pump Displacement	03/06/2011 07:24	12	5	10	33		1981. 0	PUMP 10 BARRELS OF TUNED SPACER @ 9.9 PPG DISPLACEMENT
Pump Displacement	03/06/2011 07:27	13	5	63.17	96.17		818.0	PUMP 63.17 BARRELS OF KCL WATER DISPLACEMENT

Sold To # : 306116

Ship To # : 2839147

Quote # :

Sales Order # : 7992112

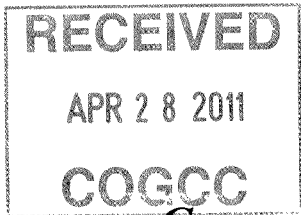
SUMMIT Version: 7.20.130

Wednesday, March 30, 2011 05:49:00

Activity Description	Date/Time	Cht #	Rate bbl/ min	Volume bbl		Pressure psig		Comments
				Stage	Total	Tubing	Casing	
Slow Rate	03/06/2011 07:32	14	2				475.0	SLOW RATE
Other	03/06/2011 07:36	15						LAND DART INTO PLUG.
Pump Displacement	03/06/2011 07:36	16	3					PUMP PLUG DOWN
Slow Rate	03/06/2011 07:42	17	2				1630. 0	SLOW RATE
Bump Plug	03/06/2011 07:46	18						BUMP PLUG WITH 96.17 BARRELS DISPLACEMENT AWAY. FINAL CIRCULATING PRESSURE 1700 PSI
Check Floats	03/06/2011 07:49	19						HELD 2400 PSI FOR 3 MINS. FLOATS HELD WITH 1.5 BARRELS BACK TO TRUCK.
Other	03/06/2011 07:51	20						TOOL HAND DROPS BALL
Other	03/06/2011 07:53	21						PUMP BALL DOWN TO SEAT INTO LINER HANGER
Other	03/06/2011 07:55	22						BALL SEATED TO SET ELEMENTS ON HANGER
Slow Rate	03/06/2011 08:01	23	2				766.0	SLOW RATE
Slow Rate	03/06/2011 08:04	24						SLOW RATE
Other	03/06/2011 08:11	25					5833. 0	PRESSURE UP TO 5800 TO SET ELEMENTS ON HANGER
Other	03/06/2011 08:18	26						RIG PULLS UP OUT OF LINER HANGER TO DISPLACE CEMENT OUT OF CASING
Other	03/06/2011 08:54	27						HES CREW PUMPS 210 BARRELS OF KCL WATER TO CIRCULATE SPACER/CEMENT OUT OF CASING
Shutdown	03/06/2011 09:50	28						SHUTDOWN / END JOB



Activity Description	Date/Time	Cht #	Rate bbl/ min	Volume bbl		Pressure psig		Comments
				Stage	Total	Tubing	Casing	
Safety Meeting - Pre Rig-Down	03/06/2011 09:54							SAFETY MEETING WITH HES CREW, RIG CREW, AND COMPANY REP. DISCUSS SAFETY RIG-DOWN PROCEDURES, HAZARDS, AND ALL HES POLICIES.
Rig-Down Equipment	03/06/2011 10:04							RIG DOWN ALL EQUIPMENT.
Pre-Convoy Safety Meeting	03/06/2011 12:00							SAFETY MEETING WITH HES CREW. DISCUSS ROAD CONDITIONS, WEATHER, DIRECTIONS, DRIVING HAZARDS, AND ALL HES POLICIES.
Depart Location for Service Center or Other Site	03/06/2011 13:00							DEPART LOCATION FOR ROCK SPRINGS YARD.
Other	03/06/2011 13:01							GOOD FULL RETURNS THROUGH OUT JOB.
Other	03/06/2011 13:02							BARRELS CEMENT TO SURFACE.
Other	03/06/2011 13:03							PLUG BUMPED. FLOATS HELD WITH BARRELS BACK TO TRUCK.



HALLIBURTON

Cementing Job Log

# HALLIBURTON

## Water Analysis Report

COMPANY:	TRUE	Date Recorded	3/6/2011
SUBMITTED BY:	ALLEN TIPPETTS	SO#	7992112
LEASE:	RESEROIR DRAW	Job Type	LINER
WELL #:	14-31B	Camp Location	ROCK SPRINGS, WY

### CEMENT MIX WATER REQUIREMENTS

Item	Recorded Test Value	Max Acceptable Limit	Potential Problems in Exceeding Limit
pH	7	5 to 8.5	Chemicals in water can cause severe retardation
Chlorides <sup>1,2</sup>	0	3000 mg/L	Can accelerate the set time on cement 1% ~ 4800 mg/L
Total Alkalinity	180	1000 mg/L	Cement is greatly retarded to the point where it may not set up at all, decrease strength of cement and possibly thicken cement slurry. (Typically occurs @ pH ≥ 8.3)
Total Hardness	15	400 mg/L	Slightly shortens pump time on cement.
Sulfates	BELOW 200	1500 mg/L	Will greatly decrease the strength of cement
Iron	0	300 mg/L	Could cause gelation issues with cement
Water Temp	83°	50F to 80F	High temps will accelerate; Low temps may risk freezing in cold weather

NOTES:

1. If the water's pH is greater than or equal to 8, avoid using it since Magnesium may be present (there are no field test strips for Magnesium).

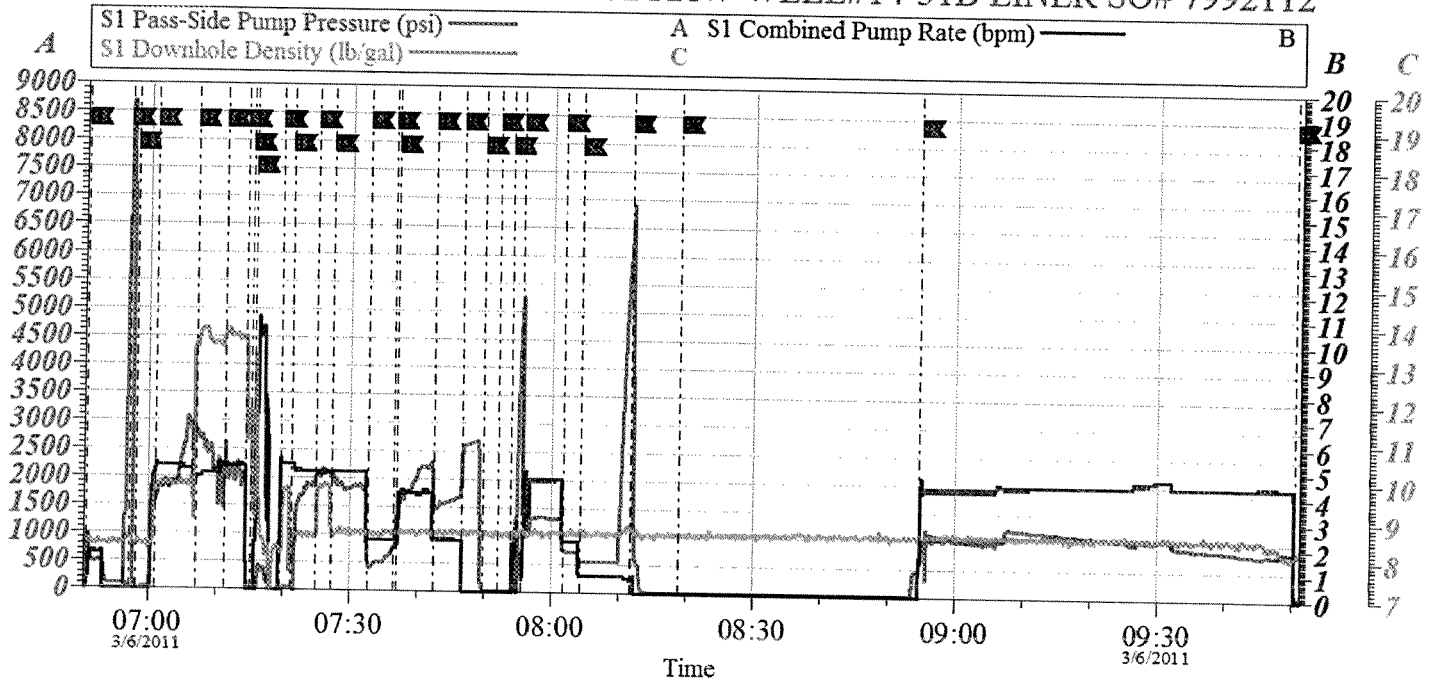
HALLIBURTON

RECEIVED

APR 28 2011

COGCC  
Cementing Job Log

TRUE OIL TRUE 22 RESERVOIR DRAW WELL#14-31B LINER SO# 7992112



Intersection				Local Event Log				Intersection						
	SCPR	SDG	SPFP		SCPR	SDG	SPFP		SCPR	SDG	SPFP			
█ FILL LINES/BREAK CIRCULATION	06:50:48	1.500	8.048	265.7	█ PRESSURE TEST IRON	06:57:03	0.000	8.340	872.0	█ RELEASE PRESSURE	06:58:01	0.000	8.140	20.83
█ PUMP SPACER	07:00:33	4.600	9.706	1581	█ PUMP LEAD	07:06:32	4.500	13.22	2818	█ PUMP TAIL	07:11:14	4.900	13.45	2111
█ SHUT DOWN	07:14:50	0.388	13.43	456.8	█ TOOL HAND DROPS DART	07:15:12	0.000	13.52	19.25	█ WASH PUMPS AND LINES	07:15:42	1.612	9.130	30.72
█ PUMP SPACER DISPLACEMENT	07:19:41	5.007	3.029	22.04	█ PUMP KCL DISPLACEMENT	07:21:12	5.000	8.253	52.17	█ PUMP SPACER DISPLACEMENT	07:24:55	4.700	8.430	1981
█ PUMP KCL DISPLACEMENT	07:27:19	4.653	8.430	2088	█ SLOW RATE	07:32:37	2.006	8.441	475.7	█ LAND DART IN PLUG	07:36:25	2.000	8.331	776.7
█ PUMP DISPLACEMENT	07:36:59	2.320	8.563	818.4	█ SLOW RATE	07:42:29	2.100	8.506	163.0	█ LAND PLUG	07:46:37	1.937	8.540	2199
█ CHECK FLOATS	07:49:46	0.000	8.520	40.16	█ TOOL HAND DROPS BALL	07:51:58	0.000	8.504	19.00	█ PUMP BALL DOWN	07:53:54	0.000	8.419	26.06
█ SEAT BALL	07:55:52	0.691	9.600	4974	█ SLOW RATE	08:01:44	2.000	8.543	766.2	█ SLOW RATE	08:04:12	0.700	8.600	572.0
█ PRESSURE UP ON LINER HANGER	08:11:57	0.390	8.719	5833	█ PULL OUT OF TOOL	08:18:55	0.000	8.542	19.00	█ PUMP CEMENT SPACER OUT OF HOLE	08:54:30	1.318	8.540	341.3
█ SHUT DOWN/END JOB	09:50:24	0.000	8.176	104.4										

Customer: TRUE OIL  
Well Description: 14-31B

Job Date: 06-Mar-2011  
Job Type: LINER

Sales Order #: 7992112  
Service Supervisor: ALLEN TIPPETTS

OptiCem v6.4.6  
06-Mar-11 12:26

Sold To #: 306116

Ship To #: 2839147

Quote #:

Sales Order #: 7992112

SUMMIT Version: 7.20.130

Wednesday, March 30, 2011 05:49:00

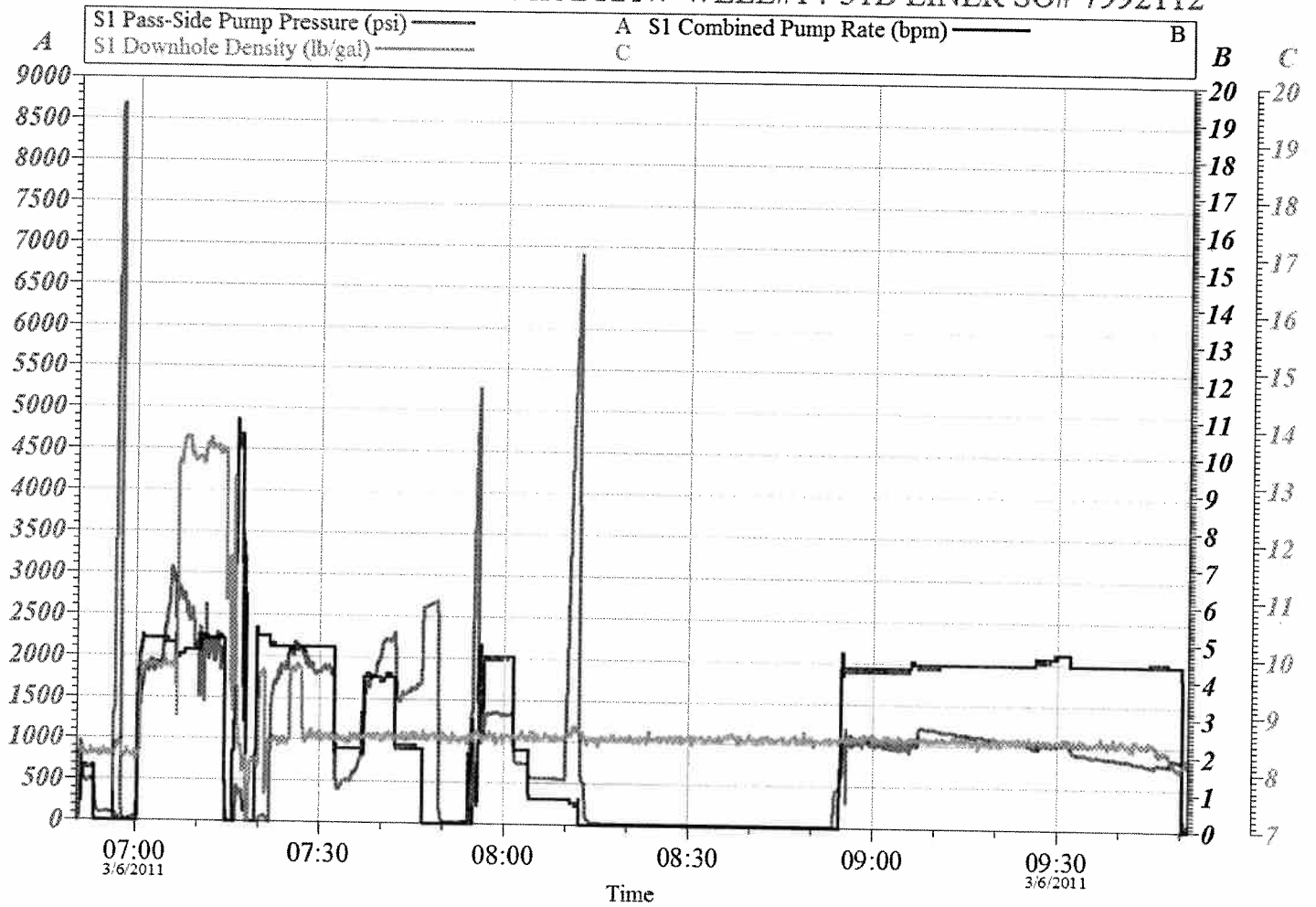
HALLIBURTON

RECEIVED

APR 28 2011

Cementing Job Log

TRUE OIL TRUE 22 RESERVOIR DRAW WELL#14-31B LINER SO# 7992112



Customer: TRUE OIL	Job Date: 06-Mar-2011	Sales Order #: 7992112
Well Description: 14-31B	Job Type: LINER	Service Supervisor: ALLEN TIPPETTS

OptiCem v6.4.6  
06-Mar-11 12:27

Sold To # : 306116

Ship To # :2839147

Quote # :

Sales Order # :

7992112

SUMMIT Version: 7.20.130

Wednesday, March 30, 2011 05:49:00