
WILLIAMS PRODUCTION RMT INC EBUSINE

**CTR 513-28-597
PICEANCE
Rio Blanco County , Colorado**

Cement Surface Casing
24-Jan-2009

Job Site Documents

The Road to Excellence Starts with Safety

| | | | |
|---|--|---------------------------|------------------------|
| Sold To #: 300721 | Ship To #: 2709460 | Quote #: | Sales Order #: 6458188 |
| Customer: WILLIAMS PRODUCTION RMT INC EBUSINE | Customer Rep: HANCOCK, SCOTT | | |
| Well Name: CTR | Well #: 513-28-597 | API/UWI #: 05-045-17810 | |
| Field: PICEANCE | City (SAP): PARACHUTE | County/Parish: Rio Blanco | State: Colorado |
| Lat: N 39.58 deg. OR N 39 deg. 34 min. 48.623 secs. | Long: W 108.285 deg. OR W -109 deg. 42 min. 52.805 secs. | | |
| Contractor: NABORS 109 | Rig/Platform Name/Num: Nabors109 | | |
| Job Purpose: Cement Surface Casing | | | |
| Well Type: Development Well | Job Type: Cement Surface Casing | | |
| Sales Person: KOHL, KYLE | Srvs Supervisor: ANDREWS, ANTHONY | MBU ID Emp #: 321604 | |

Job Personnel

| HES Emp Name | Exp Hrs | Emp # | HES Emp Name | Exp Hrs | Emp # | HES Emp Name | Exp Hrs | Emp # |
|--------------------------|---------|--------|----------------------------|---------|--------|------------------------|---------|--------|
| ANDREWS, ANTHONY Michael | | 321604 | ANGLESTEIN, TROY Edward WM | | 436099 | BLUST, CHARLES Thomas | | 386662 |
| CARPENTER, MARK Alan | | 442360 | LEIST, JAMES R | | 362787 | LEIST, MICHAEL William | | 244053 |
| WHITE, GENE L | | 445480 | | | | | | |

Equipment

| HES Unit # | Distance-1 way | HES Unit # | Distance-1 way | HES Unit # | Distance-1 way | HES Unit # | Distance-1 way |
|------------|----------------|------------|----------------|------------|----------------|------------|----------------|
| | | | | | | | |

Job Hours

| Date | On Location Hours | Operating Hours | Date | On Location Hours | Operating Hours | Date | On Location Hours | Operating Hours |
|---------|-------------------|-----------------|---------|-------------------|-----------------|------|-------------------|-----------------|
| 1/23/09 | 22 | 9 | 1/24/09 | 6 | 3.5 | | | |

TOTAL Total is the sum of each column separately

Job

| Formation Name | Top | Bottom | Called Out | Date | Time | Time Zone |
|------------------------|----------|-------------------|---------------|-----------------|-------|-----------|
| Formation Depth (MD) | | | On Location | 22 - Jan - 2009 | 19:00 | MST |
| Form Type | BHST | | Job Started | 23 - Jan - 2009 | 02:00 | MST |
| Job depth MD | 2640. ft | Job Depth TVD | Job Completed | 23 - Jan - 2009 | 08:21 | MST |
| Water Depth | | Wk Ht Above Floor | Departed Loc | 24 - Jan - 2009 | 03:21 | MST |
| Perforation Depth (MD) | From | To | | 24 - Jan - 2009 | 06:30 | MST |

Well Data

| Description | New / Used | Max pressure psig | Size in | ID in | Weight lbm/ft | Thread | Grade | Top MD ft | Bottom MD ft | Top TVD ft | Bottom TVD ft |
|-------------|------------|-------------------|---------|-------|---------------|--------|-------|-----------|--------------|------------|---------------|
|-------------|------------|-------------------|---------|-------|---------------|--------|-------|-----------|--------------|------------|---------------|

Sales/Rental/3rd Party (HES)

| Description | Qty | Qty uom | Depth | Supplier |
|--|-----|---------|-------|----------|
| PLUG,CMTG,TOP,9 5/8,HWE,8.16 MIN/9.06 MA | 1 | EA | | |

Tools and Accessories

| Type | Size | Qty | Make | Depth | Type | Size | Qty | Make | Depth | Type | Size | Qty | Make |
|--------------|------|-----|------|-------|-------------|------|-----|------|-------|----------------|------|-----|------|
| Guide Shoe | | | | | Packer | | | | | Top Plug | | | |
| Float Shoe | | | | | Bridge Plug | | | | | Bottom Plug | | | |
| Float Collar | | | | | Retainer | | | | | SSR plug set | | | |
| Insert Float | | | | | | | | | | Plug Container | | | |
| Stage Tool | | | | | | | | | | Centralizers | | | |

Miscellaneous Materials

| Gelling Agt | Conc | Surfactant | Conc | Acid Type | Qty | Conc | % |
|---------------|------|------------|------|-----------|------|------|---|
| Treatment Fld | Conc | Inhibitor | Conc | Sand Type | Size | Qty | |

| Fluid Data | | | | | | | | | |
|--|-----------------|---------------------------------|--------|-----------------------------------|------------------------|---------------------------|------------------|--------------|------------------------|
| Stage/Plug #: 1 | | | | | | | | | |
| Fluid # | Stage Type | Fluid Name | Qty | Qty uom | Mixing Density lbm/gal | Yield ft ³ /sk | Mix Fluid Gal/sk | Rate bbl/min | Total Mix Fluid Gal/sk |
| 1 | WATER SPACER | | 20 | Bbl | . | .0 | .0 | .0 | |
| 2 | Lead Cement | EXTENDACEM (TM) SYSTEM (452981) | 1000 | Sacks | 12.3 | 2.32 | 11.8 | | |
| 3 | Tail Cement | EXTENDACEM (TM) SYSTEM (452981) | 250 | Sacks | 12.6 | 2.16 | 10.58 | | |
| 4 | Displacement | | 201.5 | Bbl | 8.34 | .0 | .0 | .0 | |
| 5 | SUPER FLUSH 101 | SUPER FLUSH 101 - SBM (12199) | 30 | bbl | 10. | .0 | .0 | .0 | |
| 6 | Topout Cement | HALCEM (TM) SYSTEM (452986) | 800 | sacks | 15.8 | 1.15 | 5.0 | | 4.99 |
| 4.989 Gal | | FRESH WATER | | | | | | | |
| Calculated Values | | Pressures | | Volumes | | | | | |
| Displacement | 201.5 | Shut In: Instant | | Lost Returns | Y | Cement Slurry | 509.4 | Pad | |
| Top Of Cement | SURFACE | 5 Min | | Cement Returns | N | Actual Displacement | 201.5 | Treatment | |
| Frac Gradient | | 15 Min | | Spacers | 20 | Load and Breakdown | | Total Job | 730.9 |
| Rates | | | | | | | | | |
| Circulating | RIG | Mixing | 5 | Displacement | 5 | Avg. Job | 5 | | |
| Cement Left In Pipe | Amount | 27.8 ft | Reason | Shoe Joint | | | | | |
| Frac Ring # 1 @ | ID | Frac ring # 2 @ | ID | Frac Ring # 3 @ | ID | Frac Ring # 4 @ | ID | | |
| The Information Stated Herein Is Correct | | | | Customer Representative Signature | | | | | |

The Road to Excellence Starts with Safety

| | | | |
|--|------------------------------|---|-------------------------------|
| Sold To #: 300721 | Ship To #: 2709460 | Quote #: | Sales Order #: 6458188 |
| Customer: WILLIAMS PRODUCTION RMT INC EBUSINE | | Customer Rep: HANCOCK, SCOTT | |
| Well Name: CTR | Well #: 513-28-597 | API/UWI #: 05-045-17810 | |
| Field: PICEANCE | City (SAP): PARACHUTE | County/Parish: Rio Blanco | State: Colorado |
| Legal Description: | | | |
| Lat: N 39.58 deg. OR N 39 deg. 34 min. 48.623 secs. | | Long: W 108.285 deg. OR W -109 deg. 42 min. 52.805 secs. | |
| Contractor: NABORS 109 | | Rig/Platform Name/Num: Nabors109 | |
| Job Purpose: Cement Surface Casing | | | Ticket Amount: |
| Well Type: Development Well | | Job Type: Cement Surface Casing | |
| Sales Person: KOHL, KYLE | | Srv Supervisor: ANDREWS, ANTHONY | MBU ID Emp #: 321604 |

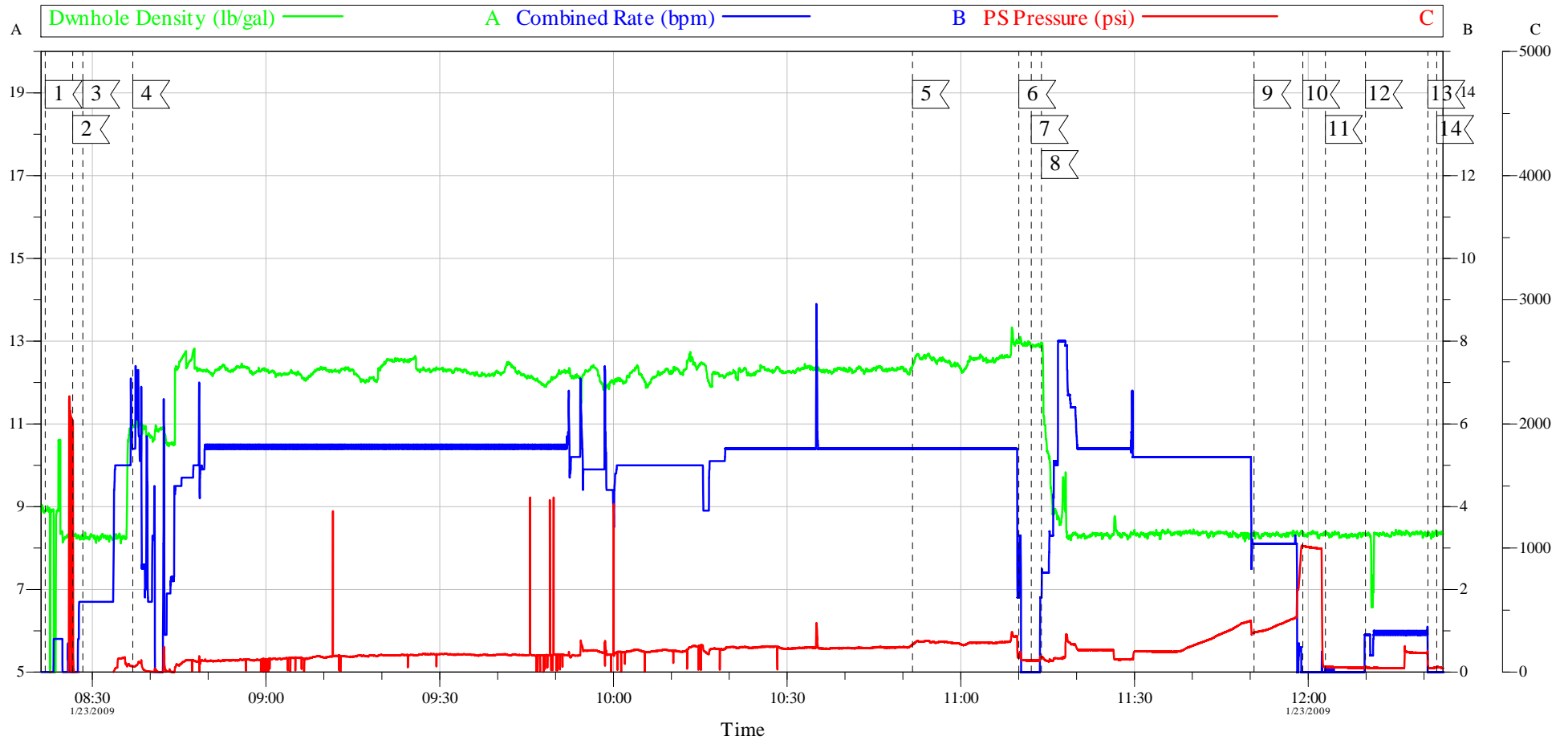
| Activity Description | Date/Time | Cht # | Rate bbl/min | Volume bbl | | Pressure psig | | Comments |
|---------------------------------------|------------------|-------|--------------|------------|-------|---------------|--------|--|
| | | | | Stage | Total | Tubing | Casing | |
| Arrive At Loc | 01/23/2009 02:00 | | | | | | | |
| Assessment Of Location Safety Meeting | 01/23/2009 02:15 | | | | | | | |
| Other | 01/23/2009 06:30 | | | | | | | SPOT EQUIPMENT |
| Pre-Rig Up Safety Meeting | 01/23/2009 06:45 | | | | | | | |
| Rig-Up Equipment | 01/23/2009 07:00 | | | | | | | |
| Pre-Job Safety Meeting | 01/23/2009 08:10 | | | | | | | |
| Start Job | 01/23/2009 08:21 | | | | | | | TD: 2645 TP: 2635 SJ: 27.8 MW: 8.7PPG PARASITE @ APPROX 2522 1.9" TBG. |
| Test Lines | 01/23/2009 08:26 | | | | | | | 1500 PSI TEST |
| Pump Spacer | 01/23/2009 08:28 | | 3 | 20 | | | 20.0 | |
| Pump Lead Cement | 01/23/2009 08:36 | | 5 | 413.2 | | | 47.0 | |
| Pump Tail Cement | 01/23/2009 10:51 | | 5 | 96.2 | | | 220.0 | |
| Shutdown | 01/23/2009 11:10 | | | | | | | |
| Drop Plug | 01/23/2009 11:12 | | | | | | | |
| Pump Displacement | 01/23/2009 11:13 | | 5 | | 201.5 | | 120.0 | |
| Slow Rate | 01/23/2009 11:50 | | 3 | 185 | | | 319.0 | |
| Bump Plug | 01/23/2009 11:59 | | 3 | 201.5 | | | 1016.0 | |

| Activity Description | Date/Time | Cht # | Rate bbl/min | Volume bbl | | Pressure psig | | Comments |
|---------------------------|------------------|-------|--------------|------------|-------|---------------|--------|--|
| | | | | Stage | Total | Tubing | Casing | |
| Check Floats | 01/23/2009 12:02 | | | | | | | |
| Other | 01/23/2009 12:09 | | 2 | 10 | | | 45.0 | PUMP DOWN PARASITE SUGAR WATER |
| Shutdown | 01/23/2009 12:20 | | | | | | | |
| Other | 01/23/2009 12:22 | | | | | | | WAIT ON CEMENT 4 HRS |
| Start Job | 01/23/2009 17:29 | | | | | | | TOPOUT #1 FIRST TOPOUT WAS DELAYED SLIGHTLY DUE TO PROBLEMS WITH 6X5 ON PUMP TRUCK. WE WERE ABLE TO FIX THE SITUATION AND CONTINUE AS PLANNED. |
| Pump Cement | 01/23/2009 17:31 | | 2.5 | 43 | | | 10.0 | 200 SKS @ 15.2 PPG 1.15YLD 10 BBLS SUPERFLUSH DOWN BACKSIDE PRIOR TO PUMPING CEMENT. THREE BAGS OF CACL USED |
| Pump Water | 01/23/2009 17:48 | | 2.5 | 2 | | | 18.0 | |
| Shutdown | 01/23/2009 17:49 | | | | | | | |
| Clean Lines | 01/23/2009 17:51 | | | | | | | |
| Other | 01/23/2009 18:02 | | | | | | | WAIT ON CEMENT 2 HRS |
| Call Out | 01/23/2009 19:00 | | | | | | | |
| Start Job | 01/23/2009 20:09 | | | | | | | TOPOUT #2 |
| Pump Cement | 01/23/2009 20:10 | | 2.5 | 33 | | | 28.0 | 150 SKS @ 15.2PPG 1.15YLD 5 BBLS SUPERFLUSH DOWN BACKSIDE PRIOR TO PUMPING CEMENT 2 BAGS CACL USED |
| Pre-Convoy Safety Meeting | 01/23/2009 20:15 | | | | | | | |
| Pump Water | 01/23/2009 20:24 | | 2.5 | 4 | | | 15.0 | |

| Activity Description | Date/Time | Cht # | Rate bbl/min | Volume bbl | | Pressure psig | | Comments |
|----------------------|------------------|-------|--------------|------------|-------|---------------|--------|--|
| | | | | Stage | Total | Tubing | Casing | |
| Shutdown | 01/23/2009 20:25 | | | | | | | |
| Clean Lines | 01/23/2009 20:26 | | | | | | | |
| Crew Leave Yard | 01/23/2009 20:30 | | | | | | | |
| Other | 01/23/2009 20:43 | | | | | | | WAIT ON CEMENT 2HRS |
| Start Job | 01/23/2009 22:02 | | | | | | | TOPOUT #3 |
| Pump Cement | 01/23/2009 22:09 | | 2.5 | 33 | | | 52.0 | 150 SKS @ 15.2 PPG 1.15 YLD 5 BBLS SUPERFLUSH AND TRICKLED DOWN BACKSIDE WHILE PUMPING CEMENT 2 BAGS CACL USED |
| Pump Water | 01/23/2009 22:22 | | 2.5 | 3 | | | 46.0 | |
| Shutdown | 01/23/2009 22:25 | | | | | | | |
| Clean Lines | 01/23/2009 22:28 | | | | | | | |
| Other | 01/23/2009 22:45 | | | | | | | WAIT ON CEMENT 2HRS |
| Start Job | 01/24/2009 00:28 | | | | | | | TOPOUT #4 |
| Pump Cement | 01/24/2009 00:33 | | 2.5 | 33 | | | 36.0 | 150 SKS @ 15.2PPG 1.15YLD SUPERFLUSH RAN DOWN BACKSIDE WHILE PUMPING CEMENT 2 BAGS CACL USED |
| Pump Water | 01/24/2009 00:45 | | 2.5 | 2.5 | | | 35.0 | |
| Shutdown | 01/24/2009 00:48 | | | | | | | |
| Clean Lines | 01/24/2009 00:52 | | | | | | | |
| Other | 01/24/2009 01:02 | | | | | | | WAIT ON CEMENT |
| Start Job | 01/24/2009 02:58 | | | | | | | TOPOUT #5 |

| Activity Description | Date/Time | Cht # | Rate bbl/ min | Volume bbl | | Pressure psig | | Comments |
|---|---------------------|----------|---------------------|---------------|-------|------------------|--------|--|
| | | | | Stage | Total | Tubing | Casing | |
| Pump Cement | 01/24/2009 03:02 | | 2.5 | 30 | | | 20.0 | 150 SKS @ 15.2PPG 1.15 YLD SUPERFLUSH RAN DOWN BACKSIDE WHILE PUMPING CEMENT 2 BAGS CACL USED |
| Pump Water | 01/24/2009 03:13 | | 1 | 2 | | | 87.0 | CEMENT TO SURACE |
| Shutdown | 01/24/2009 03:19 | | | | | | | |
| End Job | 01/24/2009 03:21 | | | | | | | NO CIRCULATION PRIOR TO STARTING INITIAL JOB. PIPE WAS LEFT STATIC THROUGHOUT JOB. PIPE WAS HELD DOWN BY TOP DRIVE. PLUG BUMPED AT CALCULATED DISPLACEMENT. WASHED UP ON TOP OF THE PLUG AS PER CUSTOMER REQUEST. |
| Post-Job Safety Meeting (Pre Rig-Down) | 01/24/2009 03:45 | | | | | | | 22 ADD HOURS CHARGED. 26 HRS CHARGED FOR TRANSPORT ON LOCATION. |
| Rig-Down Equipment | 01/24/2009 04:00 | | | | | | | |
| Pre-Convoy Safety Meeting | 01/24/2009 06:15 | | | | | | | |
| Crew Leave Location | 01/24/2009 06:30 | | | | | | | THANK YOU FOR CHOOSING HALLIBURTON CEMENTING OF GRAND JUNCTION, COLORADO ANTHONY ANDREWS AND CREW |

9 5/8" SURFACE



Event Log

| Intersection | PP | Intersection | PP | Intersection | PP |
|--------------------|-----------------|---------------------|----------------|-----------------------|-----------------|
| 1 START JOB | 08:21:52 -22.00 | 2 TEST LINES | 08:26:37 2025 | 3 PUMP SPACER | 08:28:21 -5.000 |
| 4 PUMP LEAD CEMENT | 08:36:59 47.00 | 5 PUMP TAIL CEMENT | 10:51:39 220.9 | 6 SHUTDOWN | 11:10:02 115.5 |
| 7 DROP PLUG | 11:12:11 93.00 | 8 PUMP DISPLACEMENT | 11:13:55 120.0 | 9 SLOW RATE | 11:50:39 319.0 |
| 10 BUMP PLUG | 11:59:05 1016 | 11 CHECK FLOATS | 12:02:59 42.00 | 12 PUMP DOWN PARASITE | 12:09:54 44.00 |
| 13 SHUTDOWN | 12:20:41 57.13 | 14 END JOB | 12:22:12 41.00 | | |

Customer: WILLIAMS
Lease: CTR
Well #: 513-28-597

Job Date: 1/23/09
Supervisor: ANTHONY ANDREWS
Pump Truck: 10296148

Ticket #: 6458188
ADC Used?: YES
Company Rep: SCOTT HANCOCK

CemWin v1.7.2
23-Jan-09 13:24