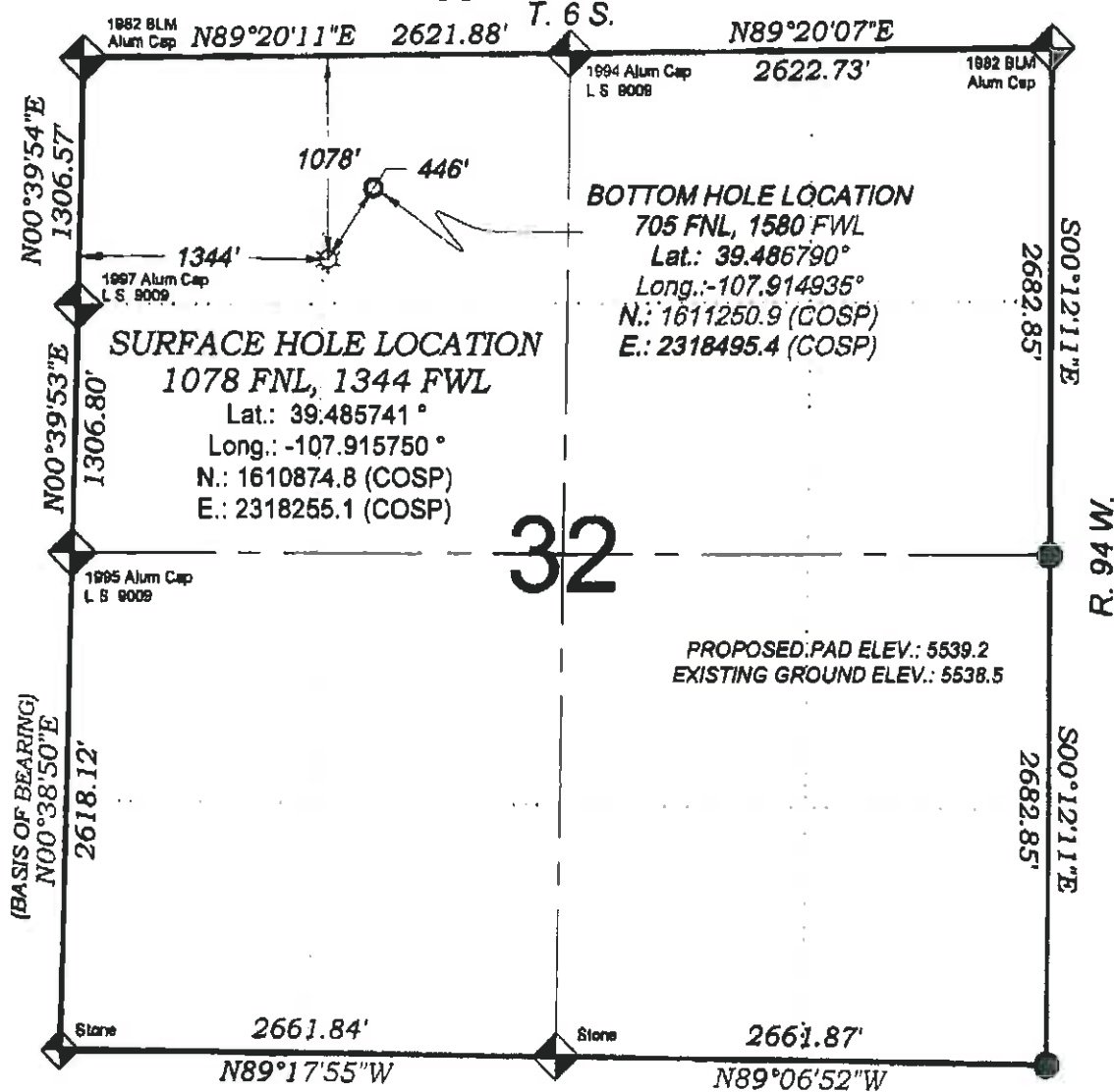


# Duggan RWF 21-32



**32**

**SURFACE HOLE LOCATION**  
 1078 FNL, 1344 FWL  
 Lat.: 39.485741 °  
 Long.: -107.915750 °  
 N.: 1610874.8 (COSP)  
 E.: 2318255.1 (COSP)

**BOTTOM HOLE LOCATION**  
 705 FNL, 1580 FWL  
 Lat.: 39.486790 °  
 Long.: -107.914935 °  
 N.: 1611250.9 (COSP)  
 E.: 2318495.4 (COSP)

PROPOSED PAD ELEV.: 5539.2  
 EXISTING GROUND ELEV.: 5538.5

THERE ARE NO VISIBLE IMPROVEMENTS WITHIN 400' OF THIS LOCATION



## - LEGEND -

- FIELD LOCATED SECTION MONUMENTS AS DESCRIBED
- FIELD SURVEYED WELL LOCATION
- CALCULATED BOTTOM HOLE LOCATION
- CALCULATED SECTION CORNER LOCATION

### SURVEYORS STATEMENT

I, MICHAEL J. LANGHORNE, A REGISTERED LAND SURVEYOR IN THE STATE OF COLORADO DO HEREBY CERTIFY THAT THE SURVEY SHOWN HEREON WAS PREPARED UNDER MY DIRECT SUPERVISION AND HAS BEEN STAKED ON THE GROUND AS SHOWN ON THE PLAT AND CHECKING THAT THIS MAP IS A TRUE REPRESENTATION THEREOF.

*Michael J. Langhorne*  
 MICHAEL J. LANGHORNE, COLORADO REGISTRATION NO. 36572  
 FOR AND ON BEHALF OF  
 BOOKCLIFF SURVEY SERVICES, INC.

### NOTES

- 1) ELEVATIONS BASED ON N.A. V.D. 1988 PUBLISHED COORDINATES.
- 2) LATITUDES AND LONGITUDES ARE BASED ON NAD 83, PUBLISHED COORDINATES
- 3) STATE PLANE COORDINATES ARE BASED ON COLORADO CENTRAL ZONE, U.S. SURVEY FEET.
- 4) ELEVATION MASK SET TO 15'
- 5) OPS OPERATOR J. KIRKPATRICK, OBSERVED A PDOP 1.8 ON SURVEY POINT NUMBER 160004.
- 6) SURFACE AND BOTTOM HOLE LOCATIONS ARE MEASURED 90° FROM SECTION LINES.

### REFERENCES

- 1) PARTIALLY SURVEYED T. 6 S., R. 94 W., 6th P.M (GLO PLAT)
- 2) U.S.G.S. QUAD. KULISON, CO

WELL LOCATION PLAT Prepared for:

**Williams Williams Production, RMT**

NE1/4 NW1/4, SECTION 32  
 T. 6 S., R. 94 W. of the 6th P.M.  
 GARFIELD COUNTY, COLORADO

**BOOKCLIFF**  
 Survey Services, Inc.  
 1301 East Third Street  
 Ft. Collins, Colorado 80504  
 Ph. (970) 635-2720  
 Fax (970) 635-2773

SURVEY DATE:	5/16/11
MAP DATE:	6/29/11
SCALE:	1" = 1000'
PLAT:	1 of 1
PROJECT:	Williams Valley