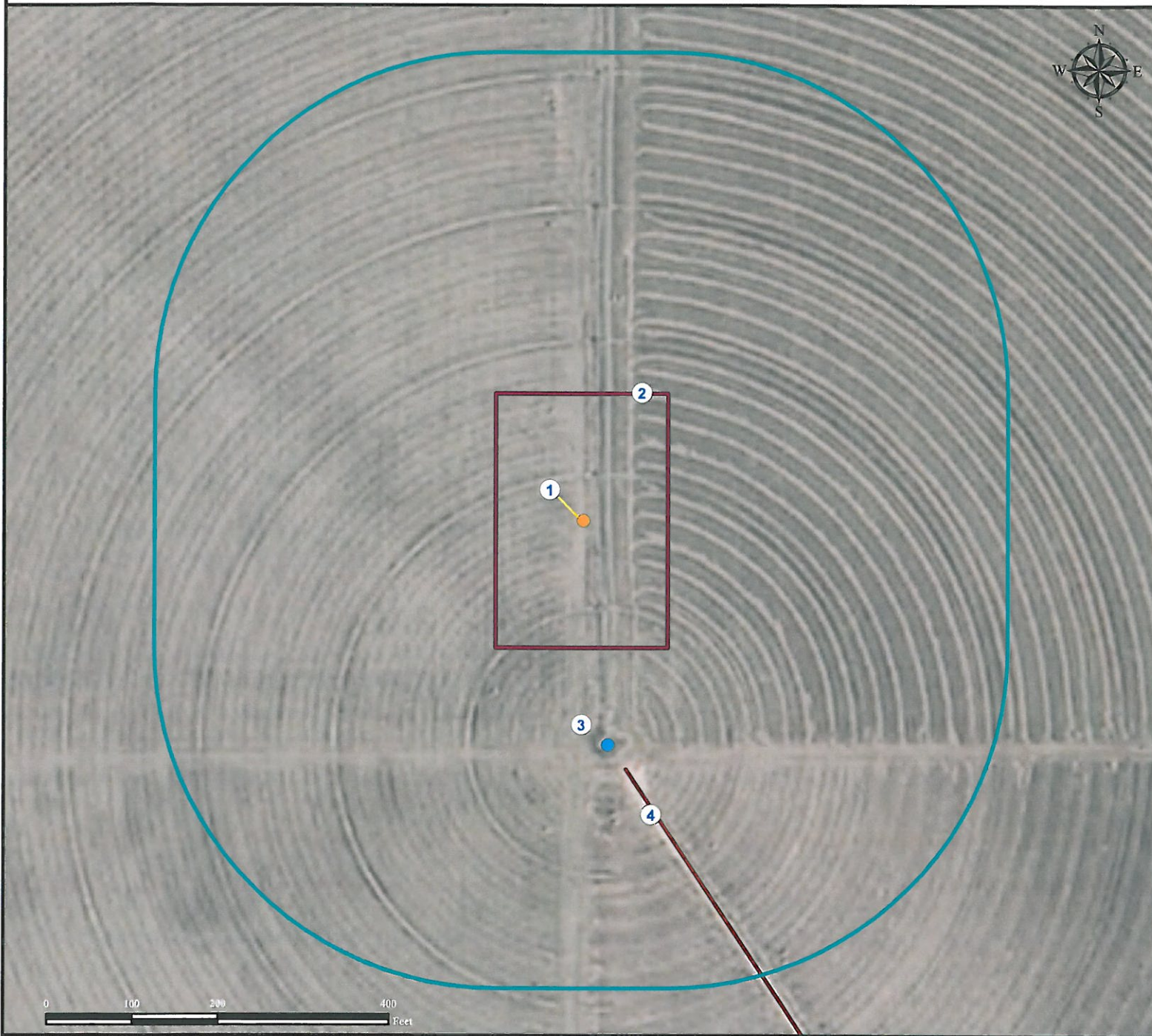


Location Drawing HERRELL 17-22

NW¼ NE¼ SECTION 22, TOWNSHIP 7 NORTH, RANGE 66 WEST OF THE 6TH PRINCIPAL MERIDIAN



- | | |
|----------------------------------|------------------------------|
| 1. Proposed Well HERRELL 17-22. | 4. Private road is ±306' SE. |
| 2. Operational Disturbance Area. | |
| 3. Pivot Track base is ±266' S. | |

Legend

- | | | |
|-----------------|---------------|--------------------|
| ● Proposed Well | ● Pivot Base | ▭ Disturbance Area |
| — Private Road | ○ 400' Radius | |

Reference Location
 ** All Measurements are Made from
 Reference Well HERRELL 17-22 **
 Lat: 40.565003° Long: -104.759140° (NAD 83)
 Elevation: 4921 Feet

Surface Use: Irrigated Crop



Use our resources to find yours!
www.petro-fs.com
 (303) 928-7128

Field Date: 05/24/2011
 Drafting Date: 06/16/2011
 Drafter: DMM
 Checked By: BHF

Data Sources:
 - Aerial courtesy of NAIP (2009)

Prepared for:
BAYSWATER
 EXPLORATION AND PRODUCTION, LLC