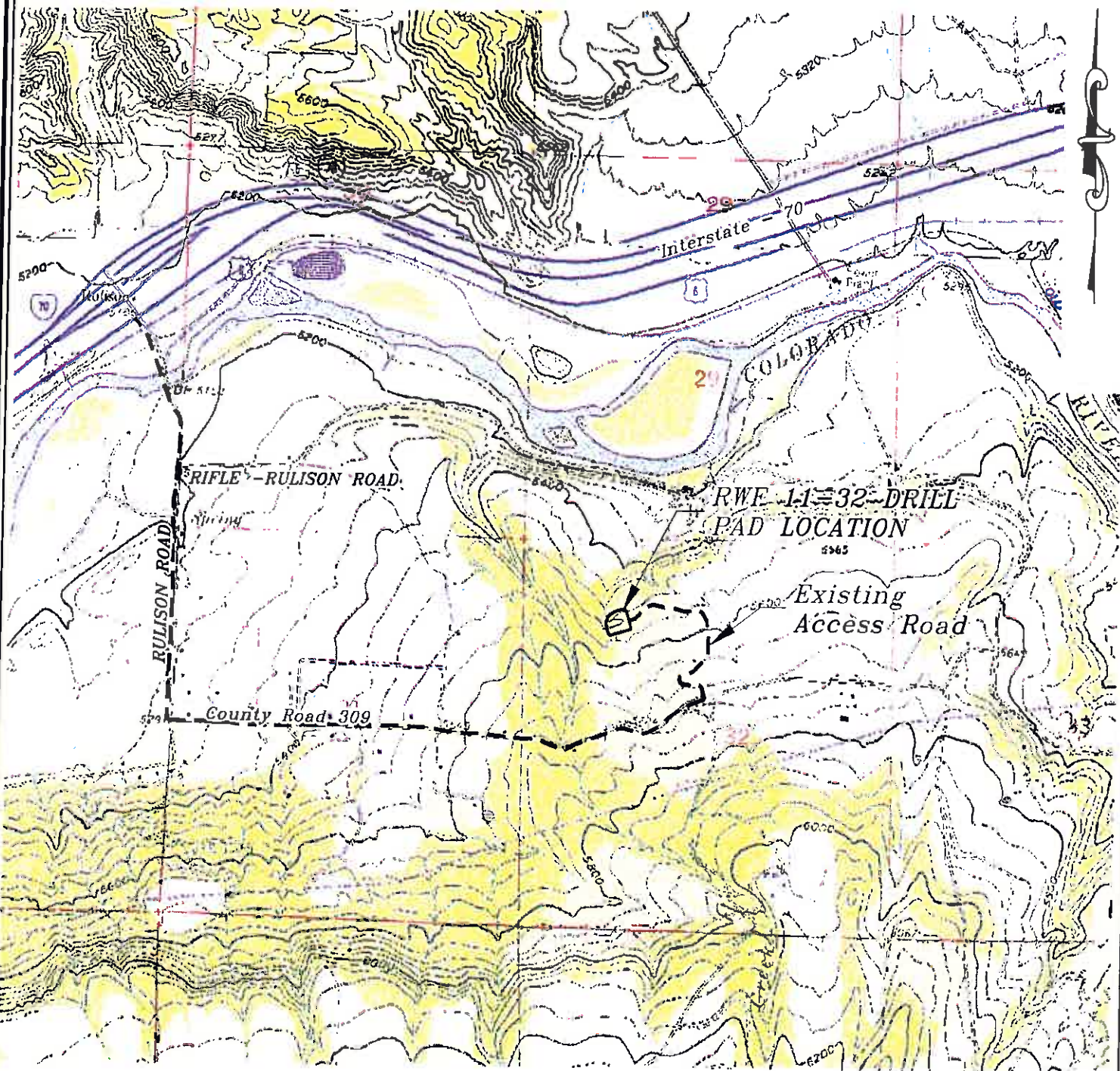


Section 11  
T. 6 S., R 94 W



**ACCESS DESCRIPTION:**  
FROM THE INTERSECTION OF STATE HIGHWAY 6 AND COUNTY ROAD 323 (RULISON ROAD) NORTH OF RULISON, PROCEED SOUTHERLY ALONG COUNTY ROAD 323 (RULISON ROAD) ±1.1 MILES TO THE INTERSECTION WITH COUNTY ROAD 309 (RULISON PARACHUTE ROAD), PROCEED LEFT IN AN EASTERLY DIRECTION ±1.5 MILES TO AN INTERSECTION WITH A DIRT/GRAVEL ROAD, PROCEED LEFT IN A NORTHERLY TO WESTERLY DIRECTION ±0.5 MILES TO THE EXISTING RWF 11-32 DRILL PAD LOCATION, AS SHOWN HEREON.

Construction Plan Prepared for:  
**Williams** Williams Production, RMT

SCALE: 1" = 2000'  
DATE: 7/1/11  
PLAT: 5 of 7  
PROJECT: Williams Valley  
DFT: cws

RWF 11-32 Drill Pad - Plat 5  
ACCESS ROAD MAP

126 East Third Street  
Pueblo, Colorado 81002  
Ph: (719) 625-2790  
Fax: (719) 625-2773

**BOOKCLIFF**  
Survey Services, Inc.