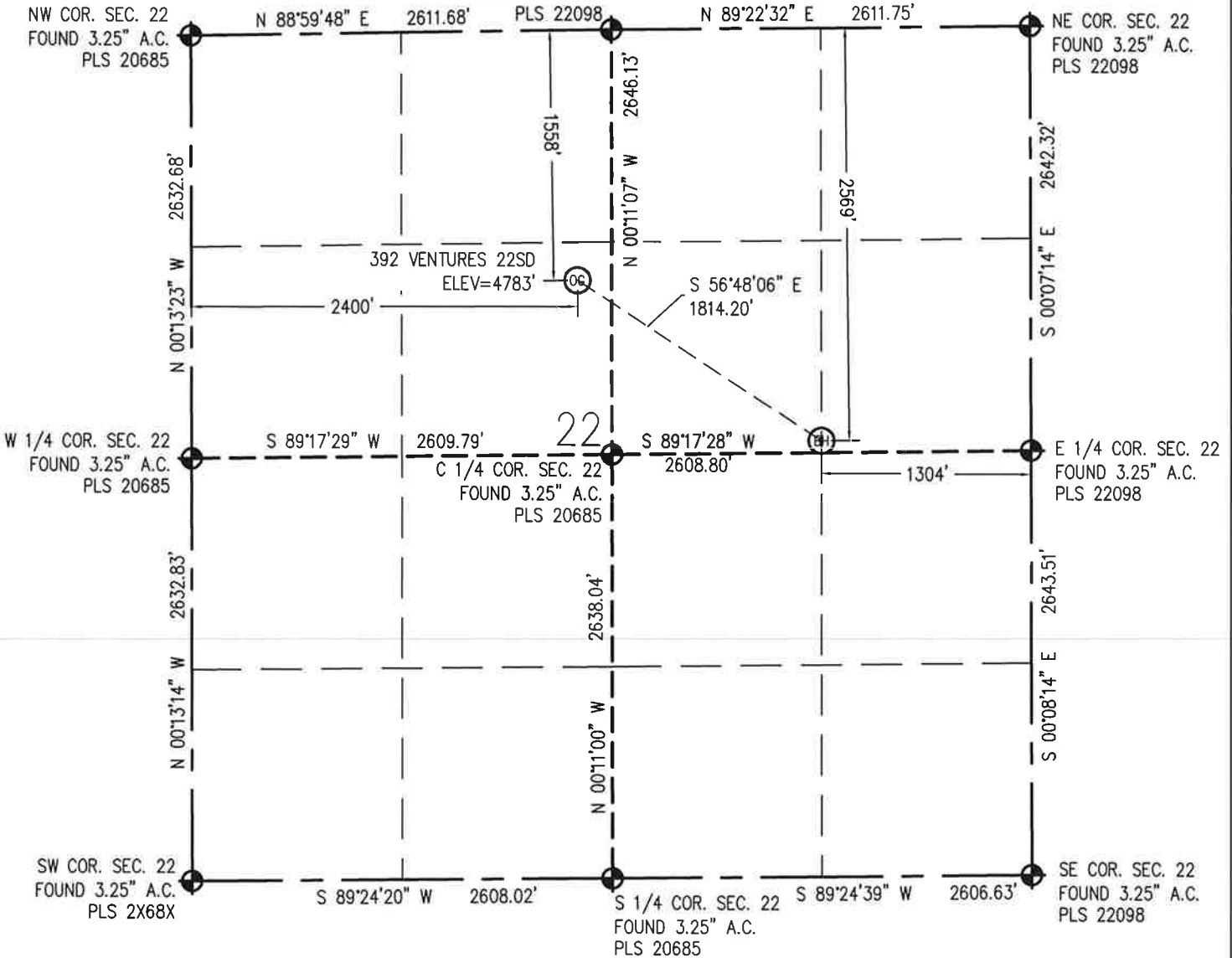


WELL LOCATION CERTIFICATE

THIS MAP DOES NOT REPRESENT A BOUNDARY SURVEY

N 1/4 COR. SEC. 22
FOUND 3.25" A.C.
PLS 22098



IN ACCORDANCE WITH A REQUEST FROM RICH BARTELS - RBF MINERALS, BASELINE ENGINEERING CORP. HAS DETERMINED THE LOCATION OF THE 392 VENTURES 22SD TO BE 1,558' FNL AND 2,400' FWL, AS MEASURED AT NINETY (90) DEGREES FROM THE SECTION LINE OF SECTION 22, TOWNSHIP 6 NORTH, RANGE 67 WEST AND THE BOTTOM HOLE LOCATION TO BE 2,569' FNL AND 1,304' FEL OF SECTION 22, TOWNSHIP 6 NORTH, RANGE 67 WEST, 6TH PRINCIPAL MERIDIAN, WELD COUNTY, COLORADO.

I HEREBY CERTIFY THAT THIS WELL LOCATION CERTIFICATE WAS PREPARED BY ME, OR UNDER MY DIRECT SUPERVISION, THAT THE FIELD WORK WAS COMPLETED ON 05/03/2011, THAT IT IS NOT A LAND SURVEY PLAT OR AN IMPROVEMENT SURVEY PLAT, AND THAT IT IS NOT TO BE RELIED UPON FOR ESTABLISHMENT OF FENCE, BUILDING, OR OTHER FUTURE IMPROVEMENT LINES.

SURFACE HOLE:
LATITUDE: 40.475402° N
LONGITUDE: 104.880449° W
PDOP: 0.7
1/4, 1/4: SE1/4NW1/4
NEAREST PROPERTY LINE: 195' SW

BOTTOM HOLE:
LATITUDE: 40.472647° N
LONGITUDE: 104.875019° W

LEGEND

- FOUND/SET SURVEY MONUMENT PER MONUMENT RECORD EXCEPTIONS NOTED.
- CALCULATED SURVEY MONUMENT POSITION
- (c) - CALCULATED DIMENSION



Joseph W. Stica, III Completed
Professional Land Surveyor Registration No. 36072 05/12/2011
State of Colorado
FOR AND ON BEHALF OF BASELINE ENGINEERING CORP.

- NOTES:
- 1) LAT/LONG SHOWN ARE BASED ON A GPS OBSERVATION (NAD83).
 - 2) BEARINGS SHOWN ARE GRID BEARINGS OF THE COLORADO STATE PLANE COORDINATE SYSTEM, NORTH ZONE, NORTH AMERICAN DATUM 1983/2007.
 - 3) GROUND ELEVATIONS ARE BASED ON A GPS OBSERVATION (NAVD 88 DATUM).
 - 4) ALL DISTANCES SHOWN ARE FIELD MEASURED UNLESS OTHERWISE NOTED.
 - 5) THE NEAREST EXISTING WELL IS: NONE IN QUARTER SECTION.
 - 6) IMPROVEMENTS: SEE LOCATION DRAWING EXHIBIT FOR ALL VISIBLE IMPROVEMENTS WITHIN 600' OF WELL HEAD.
 - 7) SURFACE USE: CORN FIELD.

NOTICE: According to Colorado law you MUST commence any legal action based upon any defect in this W.L.C. within three years after you first discover such defect. In no event may any action based upon any defect in this W.L.C. be commenced more than ten years from this said date of the certification show hereon.