

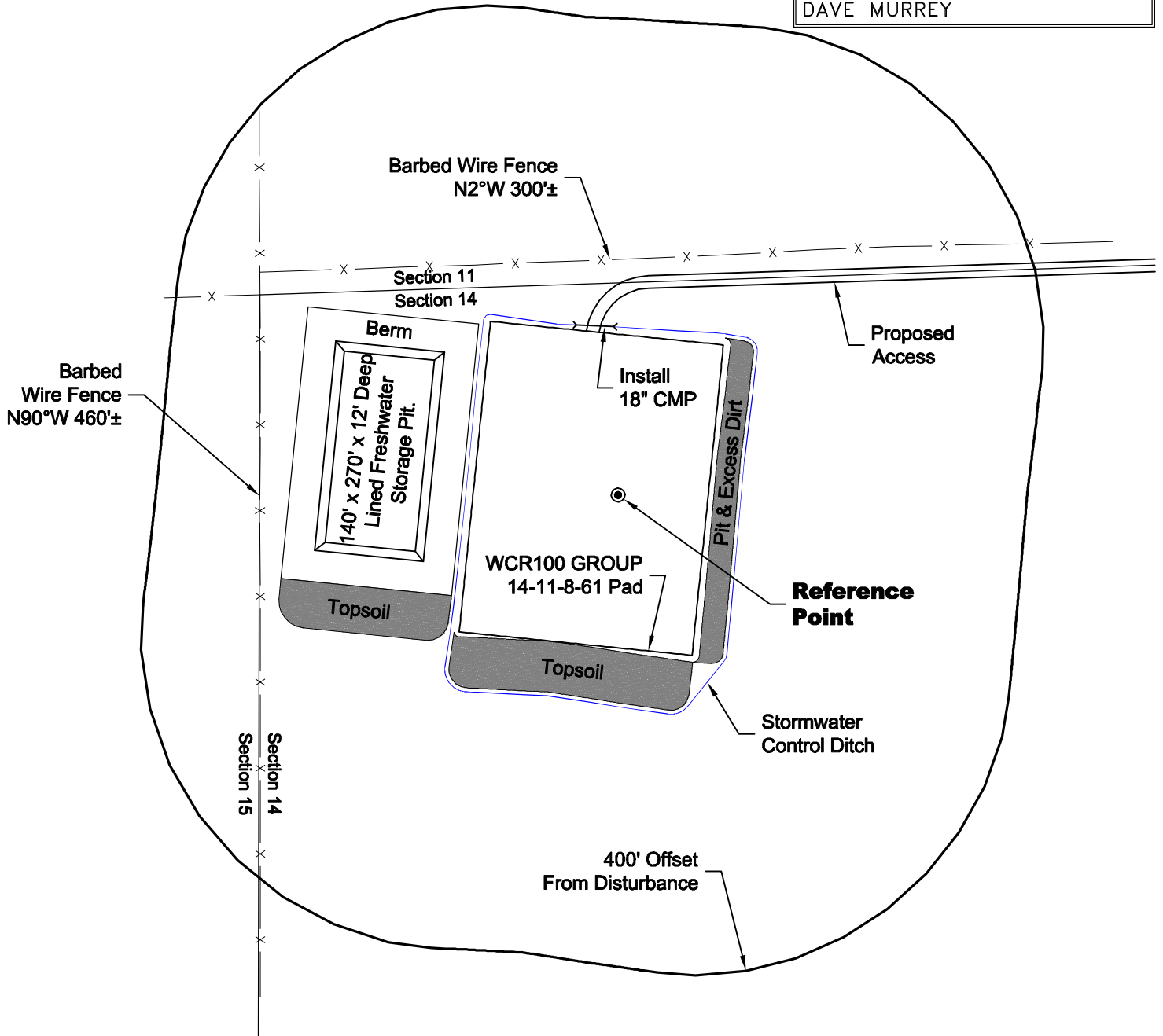
# LOCATION DRAWING

**VEGETATION:**  
STRIP FARM  
FALLOW WHEAT

**SURFACE USE:**  
AGRICULTURAL

## REFERENCE POINT

LATITUDE: 40.66842
LONGITUDE: -104.18020
FOOTAGE: 272 FNL 460 FWL
GROUND ELEVATION: 4984
PDOP: 1.7 DATE: 6/2/2011
INSTRUMENT OPERATOR:
DAVE MURREY



0 200 400  
Graphic Scale in Feet  
1 inch = 200 feet

DISTURBANCE ACREAGE:  
4.2± DRILLING OPERATIONS  
2.0± FRESHWATER STORAGE PIT  
1.0± INTERIM RECLAIM

**NOTE:**  
ALL PRODUCTION FACILITIES WILL BE ON PAD.

6/3/11

**GEO SURV**  
LAND SURVEYING AND MAPPING  
LAFAYETTE - WINTER PARK  
Ph 303 666 0379 Fx 303 665 6320

**CARRIZO OIL & GAS, INC**  
WCR100 GROUP 14-11-8-61 PAD

NW1/4 NW1/4 SEC. 14 T8N R61W  
6th PM WELD COUNTY COLORADO