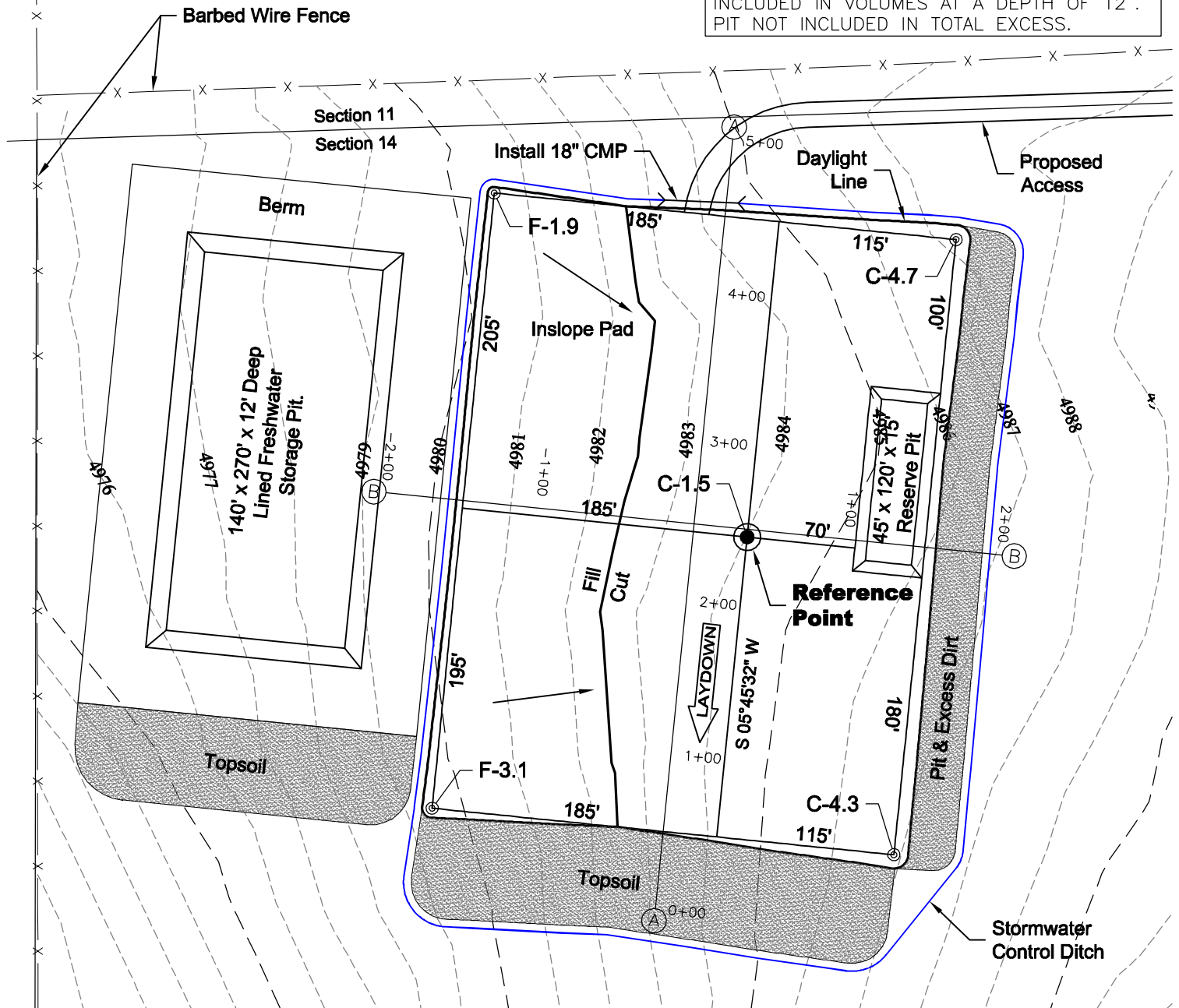


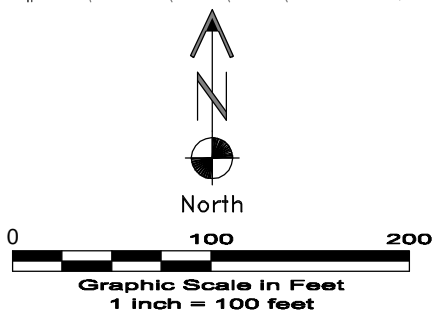
1 of 2

SURFACE USE:
AGRICULTURAL

PAD 300'X400' ELEV=4982.5'				
DISTURBED AREA=4.2± ACRES				
ESTIMATED DIRT QUANTITIES				
CUTx10%	FILL	PIT	TOPSOIL	EXCESS
6,660	1,880	2,590	4,730	50
NOTE: VOLUMES IN CUBIC YARDS. TOPSOIL INCLUDED IN VOLUMES AT A DEPTH OF 12". PIT NOT INCLUDED IN TOTAL EXCESS.				



NOTE:
10% ALLOWANCE IS MADE FOR SOIL EXPANSION.



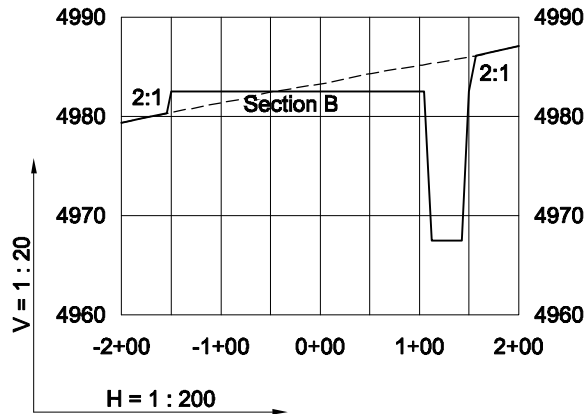
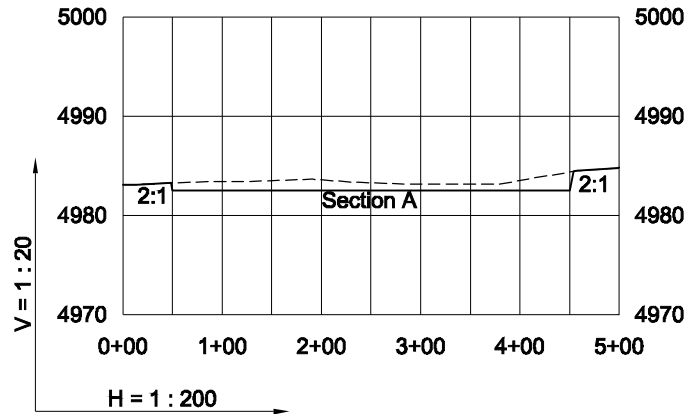
LAND SURVEYING AND MAPPING
LAFAYETTE - WINTER PARK
Ph 303 666 0379 Fx 303 665 6320

CARRIZO OIL & GAS, INC
WCR100 GROUP 14-11-8-61 PAD

NW1/4 NW1/4 SEC. 14 T8N R61W
6th PM WELD COUNTY COLORADO

CONSTRUCTION LAYOUT DRAWING

2 of 2



6/3/11

----- Existing Ground
 _____ Proposed Grade




LAND SURVEYING AND MAPPING
LAFAYETTE - WINTER PARK
 Ph 303 666 0379 Fx 303 665 6320

CARRIZO OIL & GAS, INC
WCR100 GROUP 14-11-8-61 PAD

NW1/4 NW1/4 SEC. 14 T8N R61W
6th PM WELD COUNTY COLORADO