



## DEPTH SUMMARY LISTING

Date Created: 25-JUN-2011 21:57:04

### Depth System Equipment

Depth Measuring Device	Tension Device	Logging Cable
Type: IDW-B Serial Number: 3713 Calibration Date: 12-Jan-2011 Calibrator Serial Number: 33 Calibration Cable Type: 7-39P LXS Wheel Correction 1: -5 Wheel Correction 2: -4	Type: CMTD-B/A Serial Number: 2787 Calibration Date: 31-Jan-2011 Calibrator Serial Number: 100513 Number of Calibration Points: 10 Calibration RMS: 18 Calibration Peak Error: 34	Type: 7-39P LXS Serial Number: 6171 Length: 15000 FT <hr/> Conveyance Method: Wireline Rig Type: LAND

### Depth Control Parameters

Log Sequence: First Log In the Well
Rig Up Length At Surface: 0.00 FT
Rig Up Length At Bottom: 0.00 FT
Rig Up Length Correction: 0.00 FT
Stretch Correction: 4.50 FT
Tool Zero Check At Surface: 0.00 FT

### Depth Control Remarks

<ol style="list-style-type: none"> <li>1. All Schlumberger depth policy procedures applied</li> <li>2. This is the primary depth reference</li> <li>3.</li> <li>4.</li> <li>5.</li> <li>6.</li> </ol>
---

#### DISCLAIMER

THE USE OF AND RELIANCE UPON THIS RECORDED-DATA BY THE HEREIN NAMED COMPANY (AND ANY OF ITS AFFILIATES, PARTNERS, REPRESENTATIVES, AGENTS, CONSULTANTS AND EMPLOYEES) IS SUBJECT TO THE TERMS AND CONDITIONS AGREED UPON BETWEEN SCHLUMBERGER AND THE COMPANY, INCLUDING: (a) RESTRICTIONS ON USE OF THE RECORDED-DATA; (b) DISCLAIMERS AND WAIVERS OF WARRANTIES AND REPRESENTATIONS REGARDING COMPANY'S USE OF AND RELIANCE UPON THE RECORDED-DATA; AND (c) CUSTOMER'S FULL AND SOLE RESPONSIBILITY FOR ANY INFERENCE DRAWN OR DECISION MADE IN CONNECTION WITH THE USE OF THIS RECORDED-DATA.

OTHER SERVICES1 OS1: None OS2: OS3: OS4: OS5:	OTHER SERVICES2 OS1: OS2: OS3: OS4: OS5:
REMARKS: RUN NUMBER 1	REMARKS: RUN NUMBER 2
1. This is the first run in hole.	
2. Tool run as per tool sketch.	
3. Limestone matrix 2.71 g/cc.	
4. Rmf and Rmc calculated using GEN-7	



Induction  
Temperatu  
Power Sup

7.9

SP SENSOR  
HTEN HMAS  
Accelerom HV  
Mud Resis  
Tension

0.1

0.0

TOOL ZERO

MAXIMUM STRING DIAMETER 4.63 IN  
MEASUREMENTS RELATIVE TO TOOL ZERO  
ALL LENGTHS IN FEET



Production String

(in)

(ft)

Well Schematic

(ft)

(in)

Casing String

OD

ID

MD

MD

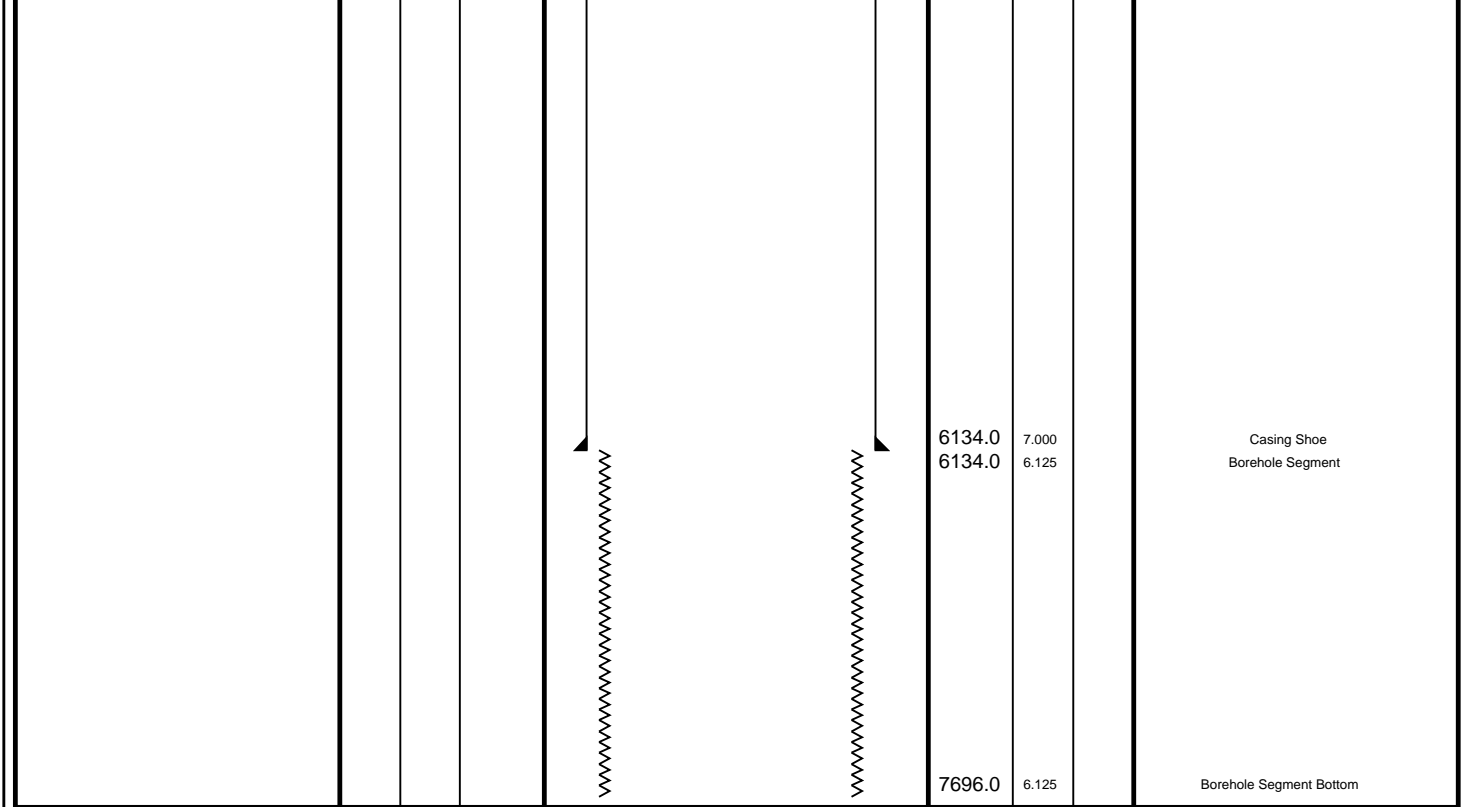
OD

ID

0.0

7.000

Casing String



Company: Quicksilver Resources Inc

Well: Weber 32-04

### Input DLIS Files

DEFAULT	AIT_TLD_MCFL_CNL_011LUP	FN:10	PRODUCER	25-Jun-2011 21:09	7716.0 FT	6046.5 FT
---------	-------------------------	-------	----------	-------------------	-----------	-----------

### Output DLIS Files

DEFAULT	AIT_TLD_MCFL_CNL_016PUP	FN:14	PRODUCER	25-Jun-2011 21:52	7716.0 FT	6046.5 FT
---------	-------------------------	-------	----------	-------------------	-----------	-----------

### OP System Version: 18C0-147

HILTB-CTS 18C0-147

### PIP SUMMARY

Time Mark Every 60 S

Std. Res. Formation Pe (PEFZ)	0	10
Alpha Processed Neutron Porosity (NPOR)	0.15	0
Tension (TENS)	10000	0

SP (SP)	-160	40
(MV)		

AIT-H 90 Inch Investigation (AHT90)	0.2	200
(OHMM)		

**GAS EFFECT**  
From DPHZ to NPOR\_1

HILT Caliper (HCAL)  
(IN) 4 14

AIT-H 30 Inch Investigation (AHT30)  
(OHMM) 0.2 200

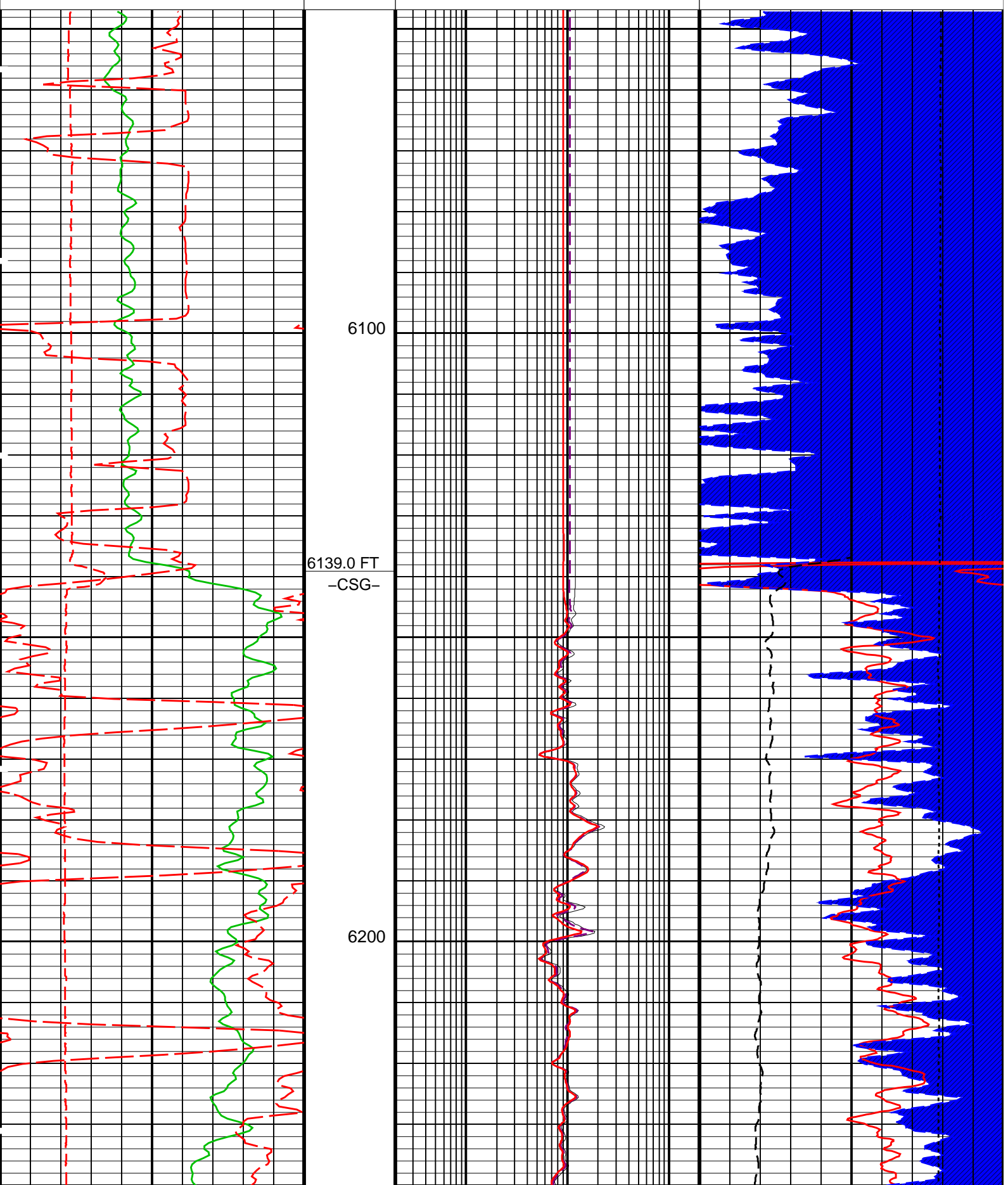
NPOR BACKUP  
From NPOR\_2 to T3

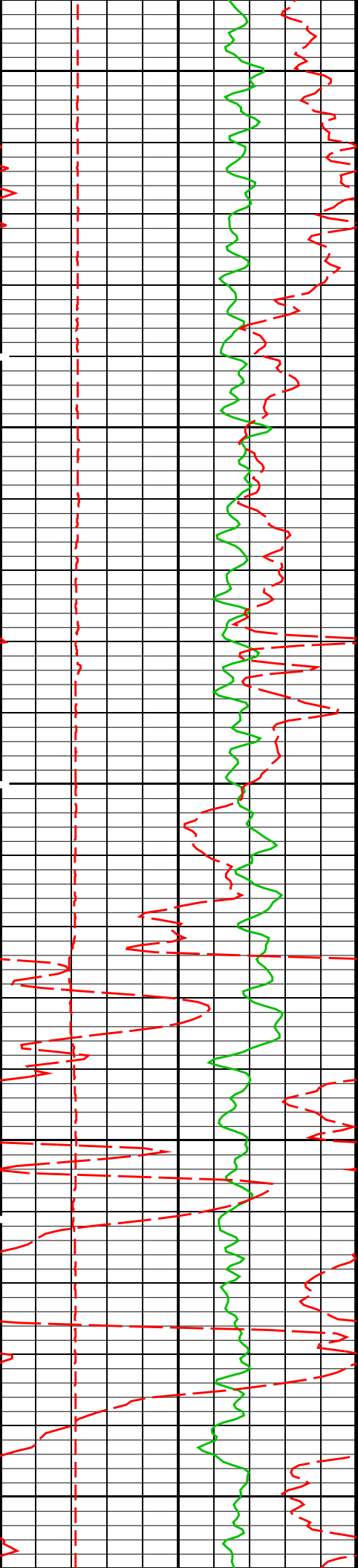
Gamma Ray (GR)  
(GAPI) 0 200

Stuck  
Stretch  
(STIT)  
(F) 0 50

AIT-H 10 Inch Investigation (AHT10)  
(OHMM) 0.2 200

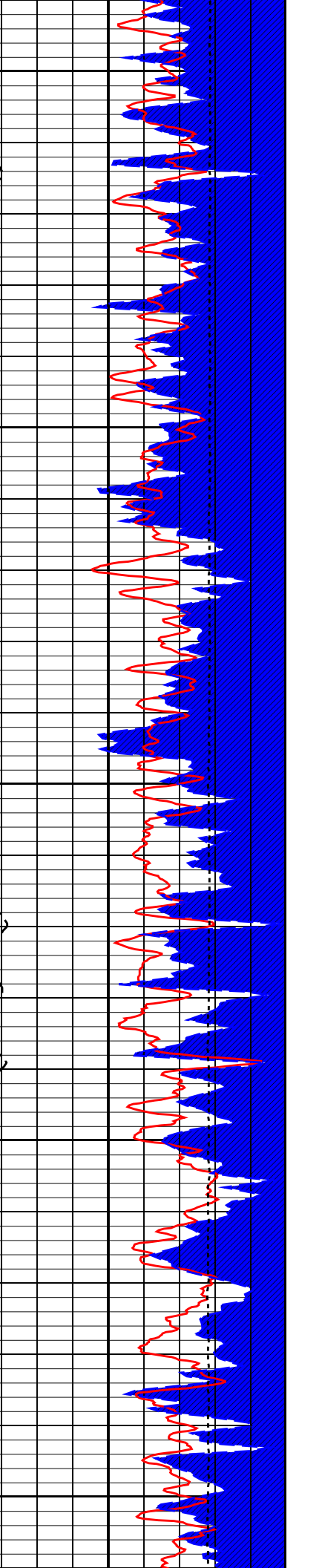
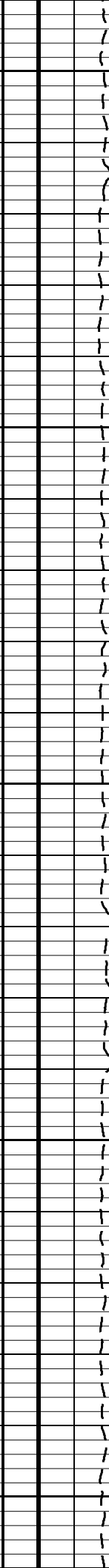
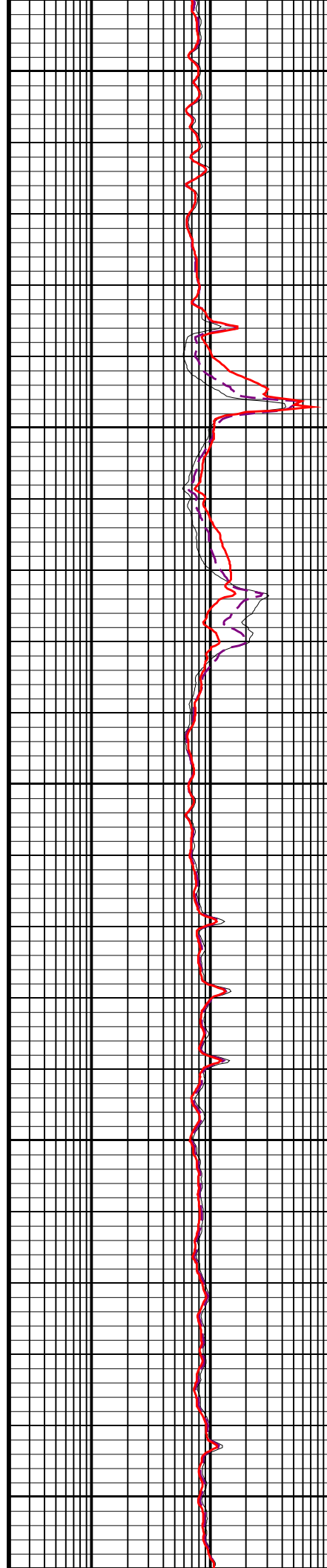
Std. Res. Density Porosity (DPHZ)  
(VV) 0.15 0

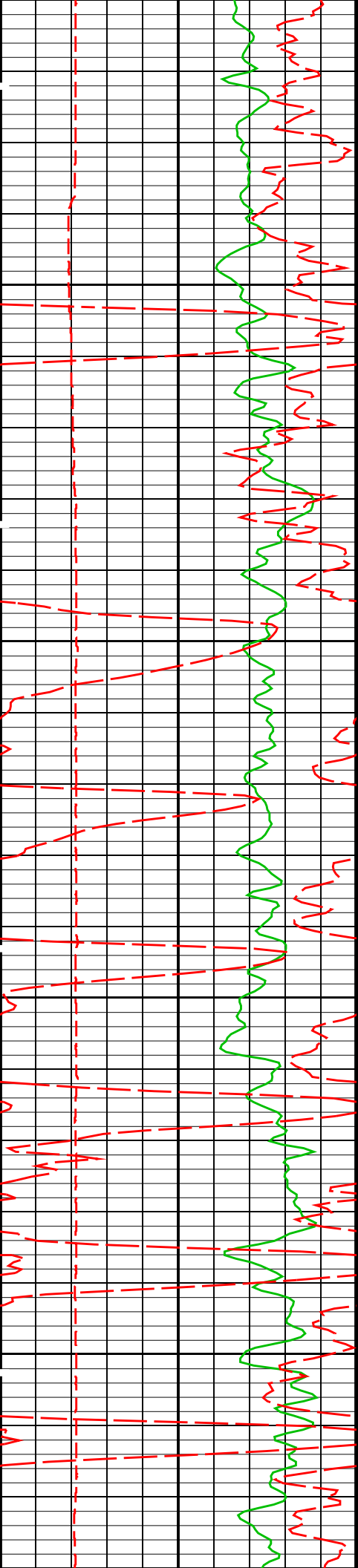




6300

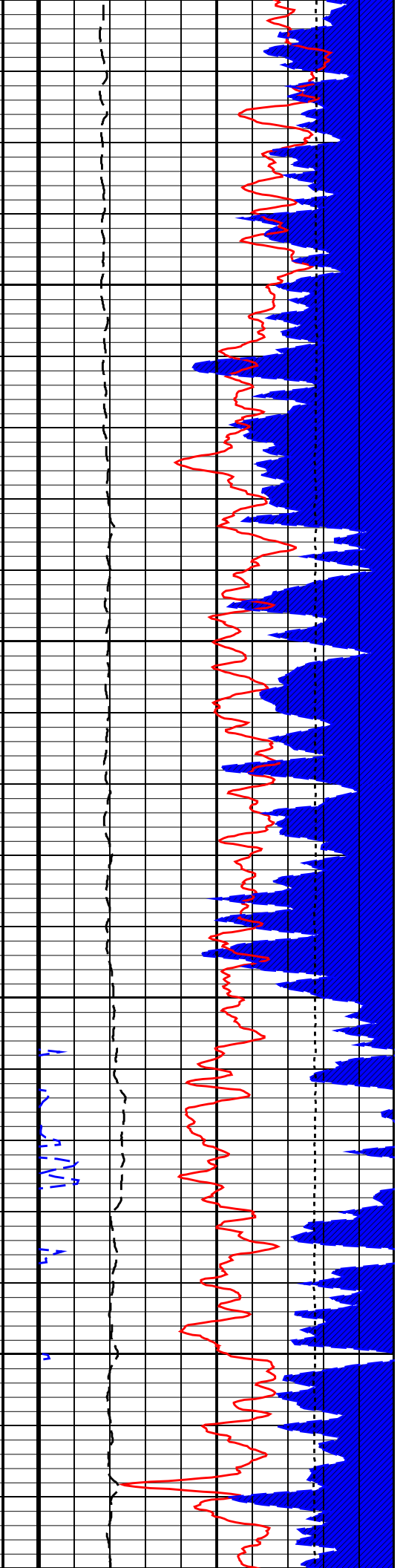
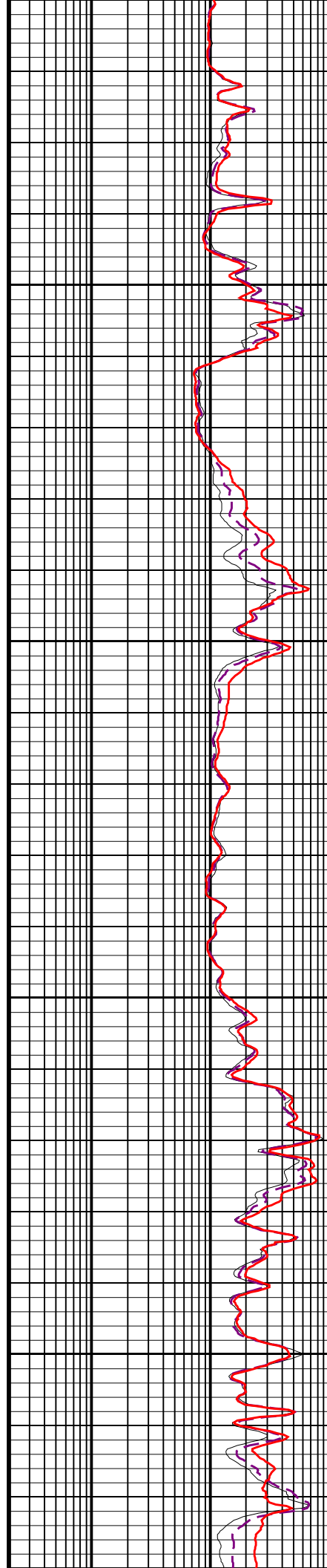
6400

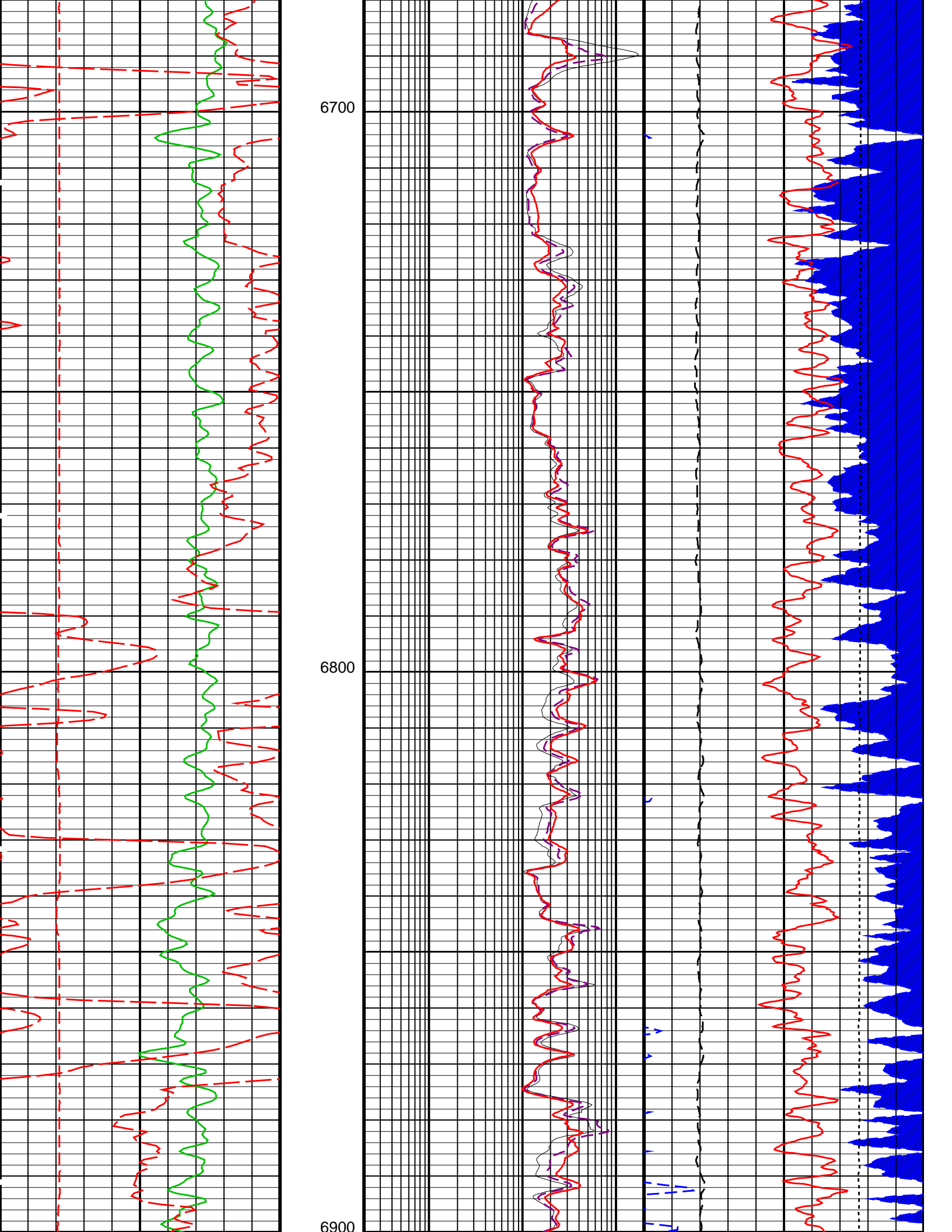


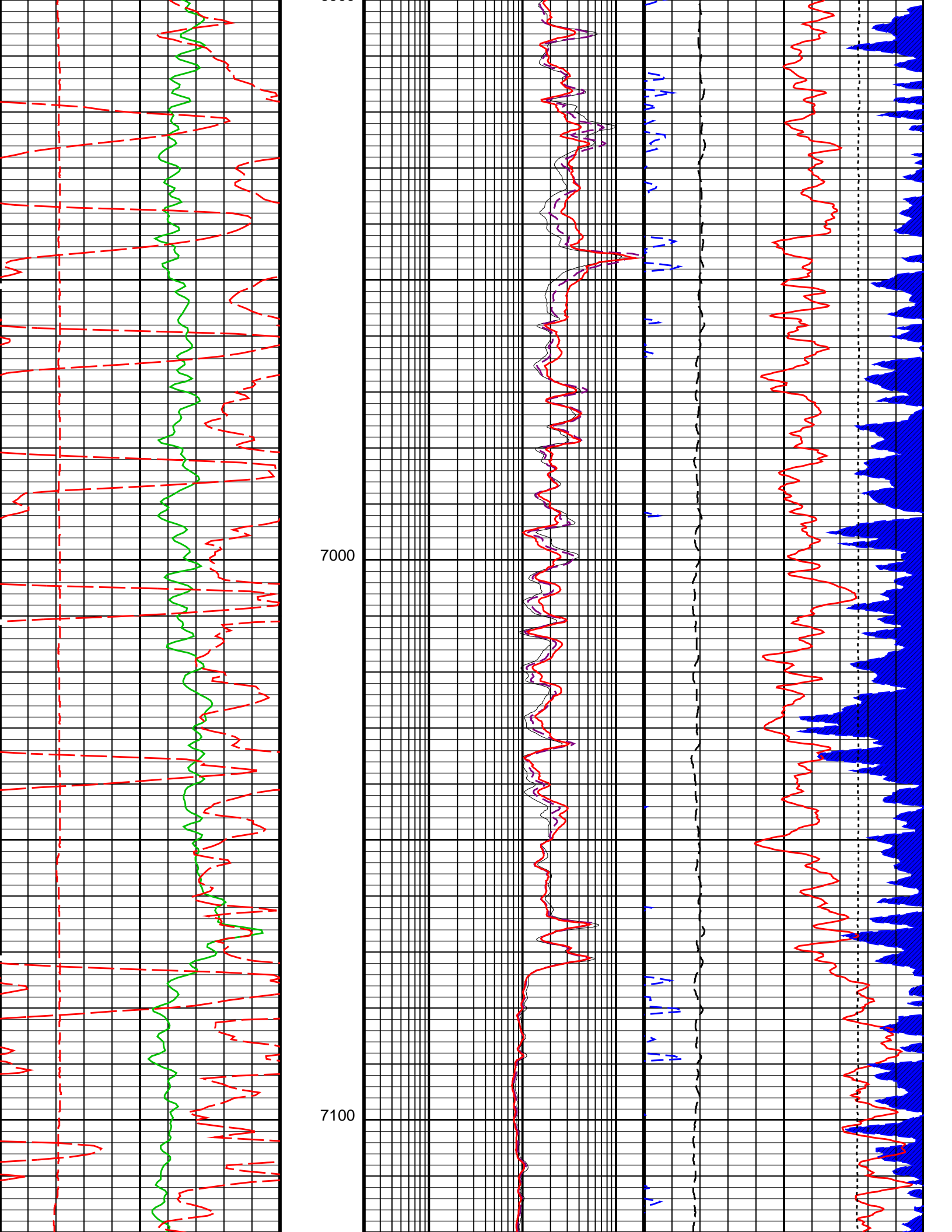


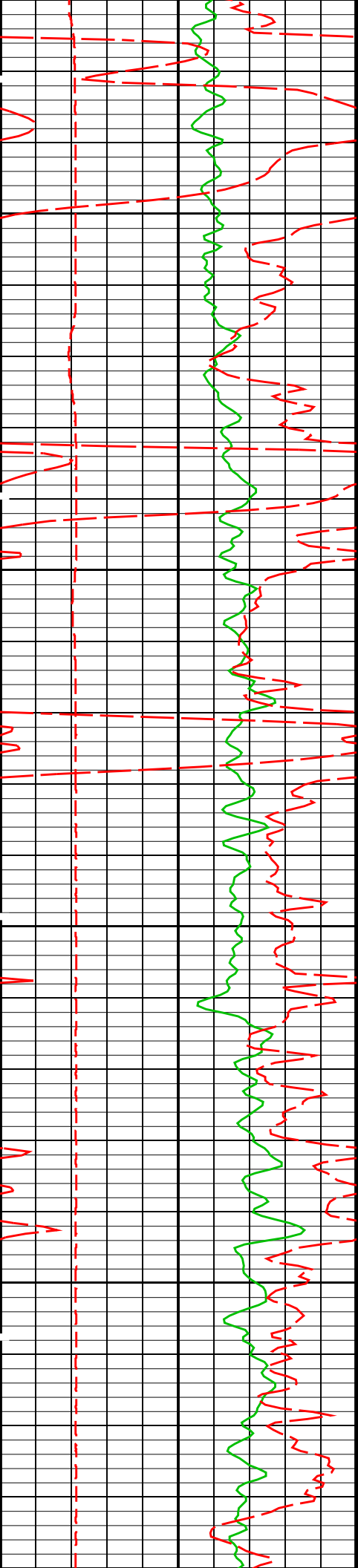
6500

6600



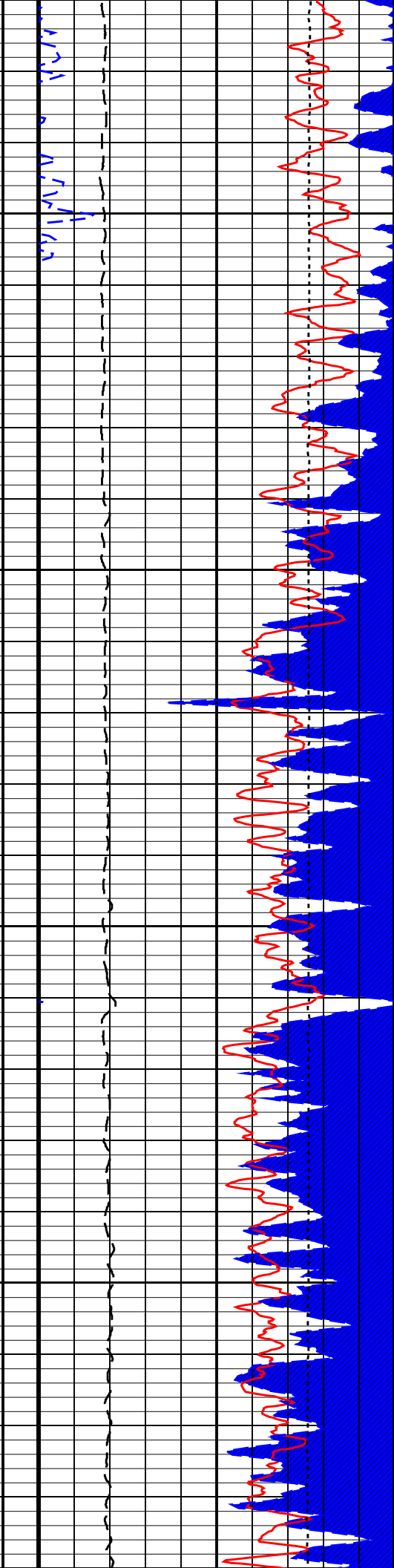
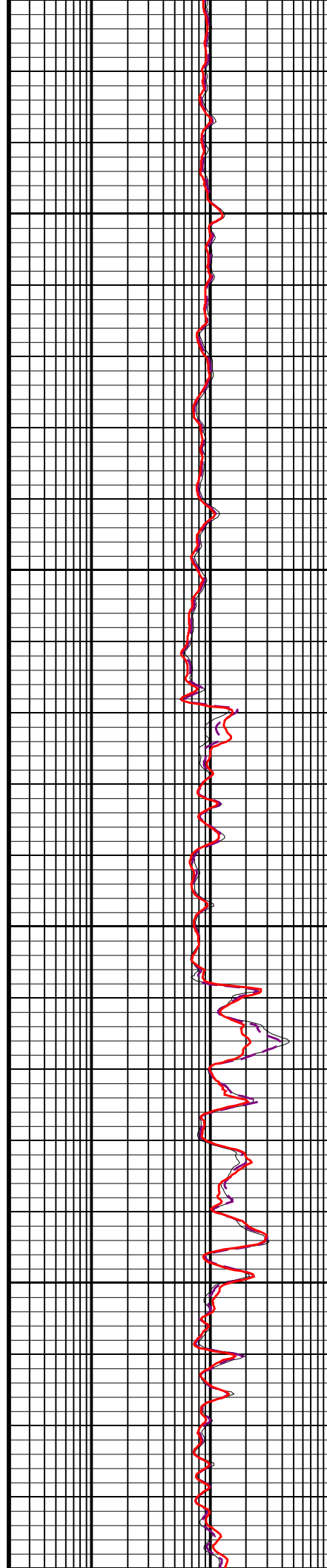


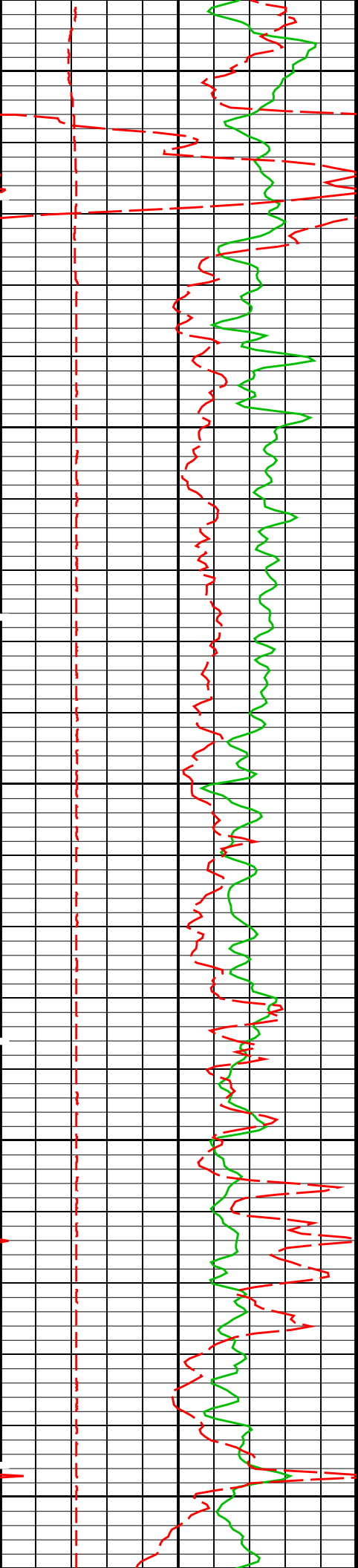




7200

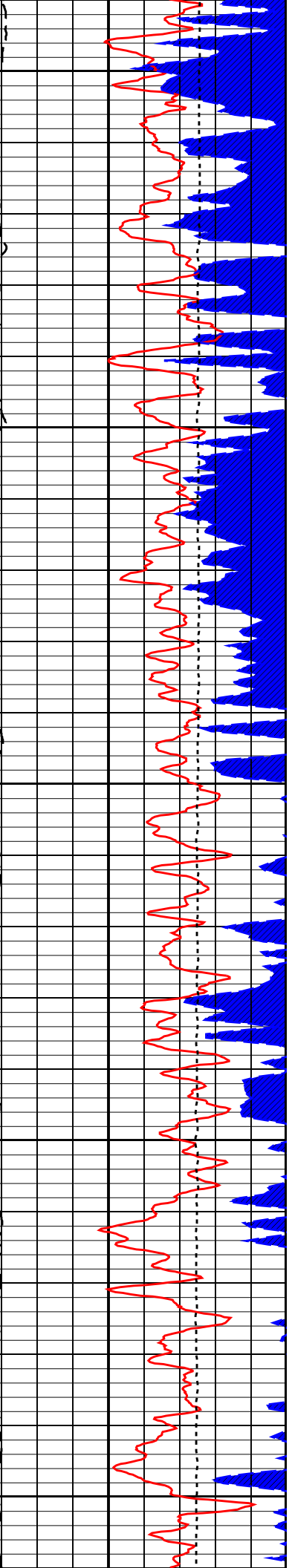
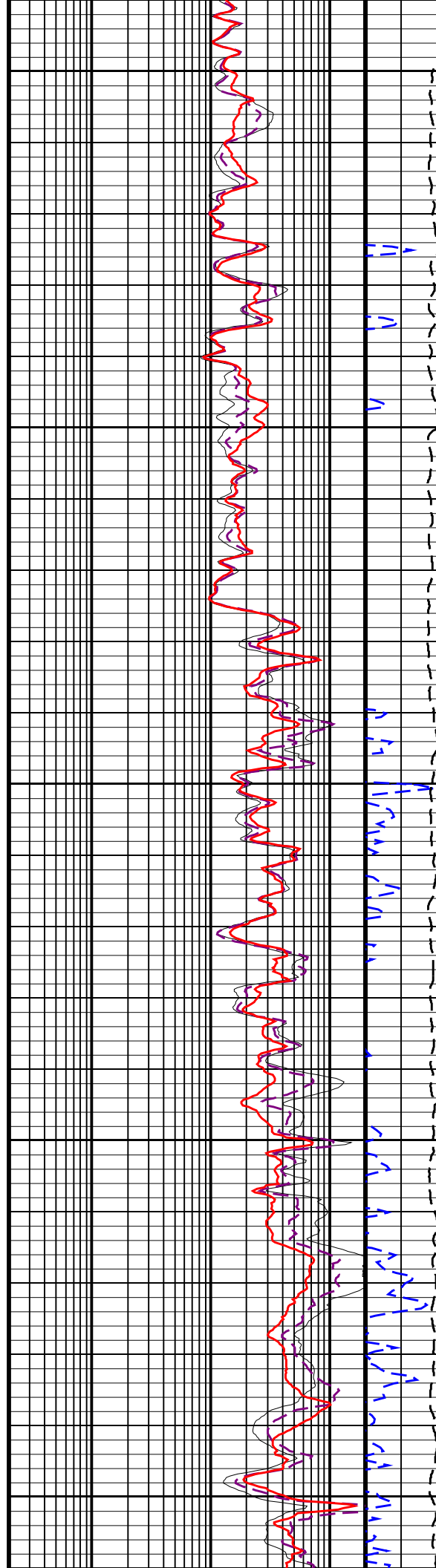
7300

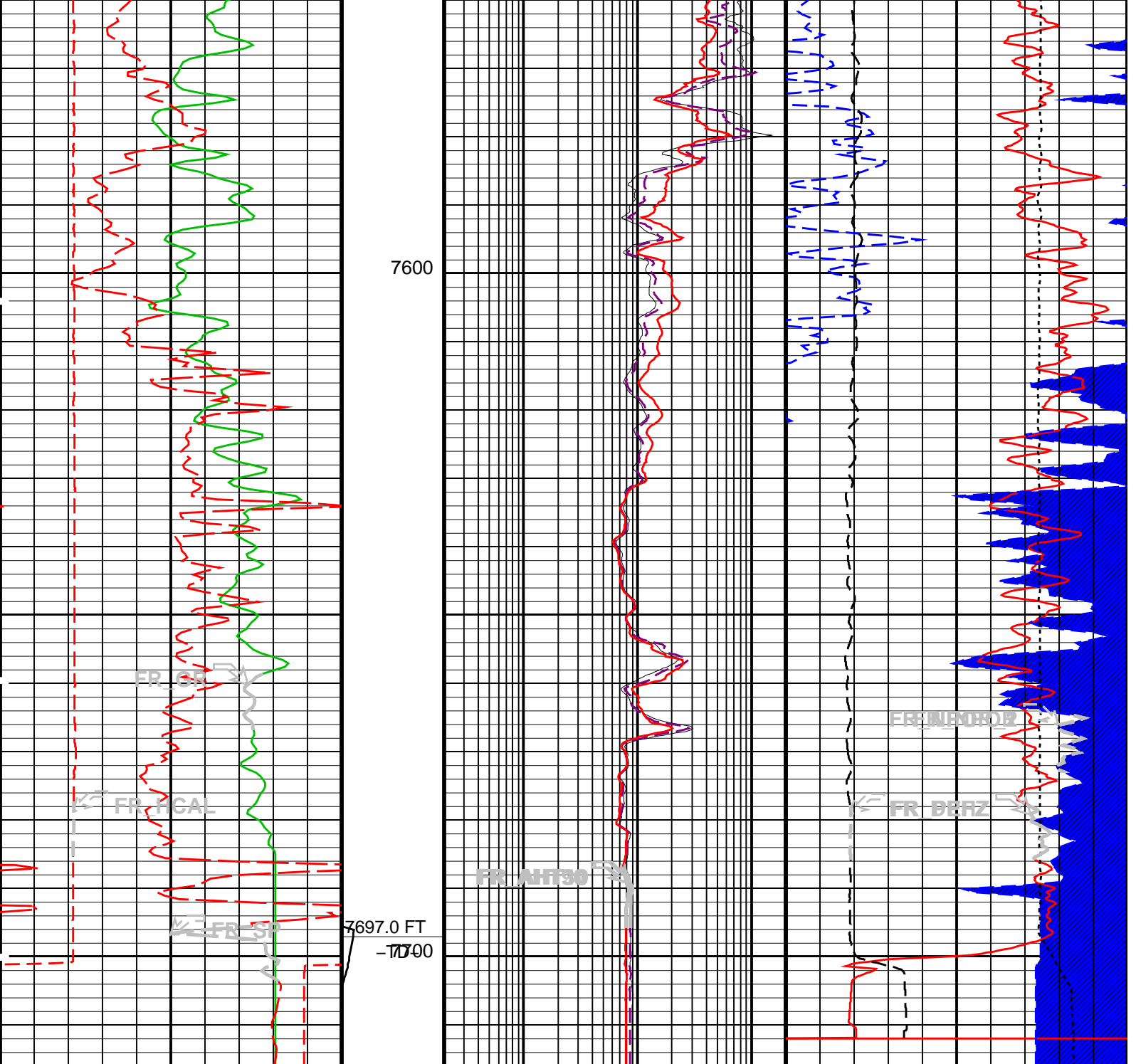




7400

7500





Gamma Ray (GR) (GAPI)		0	200
HILT Caliper (HCAL) (IN)		4	14
SP (SP) (MV)		-160	40

Stuck Stretch (STIT)	0	50
----------------------------	---	----

AIT-H 10 Inch Investigation (AHT10) (OHMM)		0.2	200
AIT-H 30 Inch Investigation (AHT30) (OHMM)		0.2	200
AIT-H 90 Inch Investigation (AHT90) (OHMM)		0.2	200

Std. Res. Density Porosity (DPHZ) (V/V)		0.15	0
NPOR BACKUP From NPOR_2 to T3			
GAS EFFECT From DPHZ to NPOR_1			

Tension (TENS) (LBF)		10000	0
Alpha Processed Neutron Porosity (NPOR) (V/V)		0.15	0

Std. Res. Formation Pe (PEFZ)			
----------------------------------	--	--	--

Time Mark Every 60 S

Parameters

DLIS Name	Description	Value	
<b>HILTB-CTS: High resolution Integrated Logging Tool-CTS</b>			
AHBHM	Array Induction Borehole Correction Mode	2_ComputeStandoff	
AHBHV	Array Induction Borehole Correction Code Version Number	900	
AHBLM	Array Induction Basic Logs Mode	6_One_Two_and_Four	
AHBLV	Array Induction Basic Logs Code Version Number	223	
AHCDE	Array Induction Casing Detection Enable	Yes	
AHCEN	Array Induction Tool Centering Flag (in Borehole)	Eccentered	
AHFRSV	Array Induction Response Set Version for Four ft Resolution	41.70.24.20	
AHMRF	Array Induction Mud Resistivity Factor	1	
AHORSV	Array Induction Response Set Version for One ft Resolution	41.70.24.20	
AHRFV	Array Induction Radial Profiling Code Version Number	701	
AHRPV	Array Induction Radial Parametrization Code Version Number	232	
AHSTA	Array Induction Tool Standoff	0.125	IN
AHTRSV	Array Induction Response Set Version for Two ft Resolution	41.70.24.20	
BHFL	Borehole Fluid Type	OIL	
BHFL_TLD	HILT Nuclear Mud Base	WATER	
BHS	Borehole Status	OPEN	
BHT	Bottom Hole Temperature (used in calculations)	170	DEGF
BSCO	Borehole Salinity Correction Option	NO	
CCCO	Casing & Cement Thickness Correction Option	NO	
DHC	Density Hole Correction	BS	
FD	Fluid Density	1	G/C3
FEXP	Form Factor Exponent	2	
FNUM	Form Factor Numerator	1	
FSAL	Formation Salinity	-50000	PPM
FSCO	Formation Salinity Correction Option	NO	
GCLF	Germany Coal-like Formation Option	NO	
GCSE	Generalized Caliper Selection	HCAL	
GDEV	Average Angular Deviation of Borehole from Normal	0	DEG
GGRD	Geothermal Gradient	0.01	DF/F
GRSE	Generalized Mud Resistivity Selection	AITH_RESIST	
GTSE	Generalized Temperature Selection	HSTS_HTEM	
HSCO	Hole Size Correction Option	YES	
MATR	Rock Matrix for Neutron Porosity Corrections	LIMESTONE	
MCCO	Mud Cake Correction Option	NO	
MCOR	Mud Correction	NATU	
MDEN	Matrix Density	2.71	G/C3
MWCO	Mud Weight Correction Option	NO	
NAAC	HRDD APS Activation Correction	OFF	
NMT	HILT Nuclear Mud Type	NOBARITE	
NPRM	HRDD Processing Mode	StdRes	
NSAR	HRDD Depth Sampling Rate	1	IN
PTCO	Pressure/Temperature Correction Option	NO	
SDAT	Standoff Data Source	SOCN	
SHT	Surface Hole Temperature	68	DEGF
SOCN	Standoff Distance	0.125	IN
SOCO	Standoff Correction Option	YES	
SPNV	SP Next Value	0	MV
<b>FEQL: Formation Evaluation Quick Look</b>			
FEXP	Form Factor Exponent	2	
FNUM	Form Factor Numerator	1	
<b>HOLEV: Integrated Hole/Cement Volume</b>			
BHS	Borehole Status	OPEN	
BHT	Bottom Hole Temperature (used in calculations)	170	DEGF
GCSE	Generalized Caliper Selection	HCAL	
GDEV	Average Angular Deviation of Borehole from Normal	0	DEG
GGRD	Geothermal Gradient	0.01	DF/F
GRSE	Generalized Mud Resistivity Selection	AITH_RESIST	
GTSE	Generalized Temperature Selection	HSTS_HTEM	
MATR	Rock Matrix for Neutron Porosity Corrections	LIMESTONE	
SHT	Surface Hole Temperature	68	DEGF
<b>PERT: Preliminary Evaluation - Real Time</b>			
BHS	Borehole Status	OPEN	
BHT	Bottom Hole Temperature (used in calculations)	170	DEGF
FEXP	Form Factor Exponent	2	
FNUM	Form Factor Numerator	1	
GCSE	Generalized Caliper Selection	HCAL	
GDEV	Average Angular Deviation of Borehole from Normal	0	DEG
GGRD	Geothermal Gradient	0.01	DF/F
GRSE	Generalized Mud Resistivity Selection	AITH_RESIST	
GTSE	Generalized Temperature Selection	HSTS_HTEM	
MATR	Rock Matrix for Neutron Porosity Corrections	LIMESTONE	
SHT	Surface Hole Temperature	68	DEGF
<b>STI: Stuck Tool Indicator</b>			

LBFR	Trigger for MAXIS First Reading Label	TDL	
STKT	STI Stuck Threshold	2.5	FT
TDD	Total Depth - Driller	7696.00	FT
TDL	Total Depth - Logger	7697.00	FT
<b>System and Miscellaneous</b>			
BS	Bit Size	6.125	IN
BSAL	Borehole Salinity	-50000.00	PPM
CSIZ	Current Casing Size	7.000	IN
CWEI	Casing Weight	26.00	LB/F
DFD	Drilling Fluid Density	9.00	LB/G
DO	Depth Offset for Playback	0.0	FT
DORL	Depth Offset for Repeat Analysis	0.0	FT
FLEV	Fluid Level	-50000.00	FT
MST	Mud Sample Temperature	0.00	DEGF
PP	Playback Processing	RECOMPUTE	
RMFS	Resistivity of Mud Filtrate Sample	0.0000	OHMM
TD	Total Depth	7697	FT

Format: COMBO    Vertical Scale: 5" per 100'    Graphics File Created: 25-Jun-2011 21:52

### OP System Version: 18C0-147

HILTB-CTS    18C0-147

#### Input DLIS Files

DEFAULT	AIT_TLD_MCFL_CNL_011LUP	FN:10	PRODUCER	25-Jun-2011 21:09	7716.0 FT	6046.5 FT
---------	-------------------------	-------	----------	-------------------	-----------	-----------

#### Output DLIS Files

DEFAULT	AIT_TLD_MCFL_CNL_016PUP	FN:14	PRODUCER	25-Jun-2011 21:52		
---------	-------------------------	-------	----------	-------------------	--	--

**Company: Quicksilver Resources Inc**



**Well: Weber 32-04**  
**Field: Bell Rock**  
**County: Moffat**  
**State: Colorado**

Platform Express  
Triple Combo