
ANTERO RESOURCES

**BURKLE FED A14
MAMM CREEK
Garfield County , Colorado**

Cement Surface Casing **11-Apr-2011**

Post Job Report

The Road to Excellence Starts with Safety

Sold To #: 337854		Ship To #: 2845443		Quote #:		Sales Order #: 8061650	
Customer: ANTERO RESOURCES				Customer Rep: Honeycutt, Matt			
Well Name: BURKLE FED			Well #: A14			API/UWI #: 05-045-20490	
Field: MAMM CREEK		City (SAP): SILT		County/Parish: Garfield			State: Colorado
Lat: N 39.525 deg. OR N 39 deg. 31 min. 30.972 secs.				Long: W 107.67 deg. OR W -108 deg. 19 min. 46.978 secs.			
Contractor: Craigs Roustabout Service, Inc.			Rig/Platform Name/Num: Craigs #2				
Job Purpose: Cement Surface Casing							
Well Type: Development Well				Job Type: Cement Surface Casing			
Sales Person: METLI, MARSHALL				Srvc Supervisor: HUGENTOBLE, LOGAN			MBU ID Emp #: 447333

Job Personnel

HES Emp Name	Exp Hrs	Emp #	HES Emp Name	Exp Hrs	Emp #	HES Emp Name	Exp Hrs	Emp #
ANDERSON, ADAM S	5	456683	COSTELDIA, BROCK James	5	476115	HUGENTOBLE, LOGAN Mark	5	447333
RAMSEY, DANIEL Thomas	5	488923	SINGLETON, AUSTIN W	5	487406			

Equipment

HES Unit #	Distance-1 way	HES Unit #	Distance-1 way	HES Unit #	Distance-1 way	HES Unit #	Distance-1 way
10248065	60 mile	10741259	60 mile	10744648C	60 mile	10829463	60 mile
10998508	60 mile						

Job Hours

Date	On Location Hours	Operating Hours	Date	On Location Hours	Operating Hours	Date	On Location Hours	Operating Hours
4/10/11	3	.5	4/11/11	2	.5			

TOTAL	Total is the sum of each column separately							
-------	--	--	--	--	--	--	--	--

Job

Formation Name	Top	Bottom	Called Out	Date	Time	Time Zone
Formation Depth (MD)			On Location	10 - Apr - 2011	21:00	MST
Form Type	BHST		Job Started	10 - Apr - 2011	23:18	MST
Job depth MD	1300. ft	Job Depth TVD	1300. ft	Job Completed	11 - Apr - 2011	00:46
Water Depth		Wk Ht Above Floor		Departed Loc	11 - Apr - 2011	02:45
Perforation Depth (MD)	From	To				

Well Data

Description	New / Used	Max pressure psig	Size in	ID in	Weight lbm/ft	Thread	Grade	Top MD ft	Bottom MD ft	Top TVD ft	Bottom TVD ft
12 1/4" Open Hole				12.25				.	1300.		
8 5/8" Surface Casing	New		8.625	7.825	36.			.	1300.		

Sales/Rental/3rd Party (HES)

Description	Qty	Qty uom	Depth	Supplier
PLUG,CMTG,TOP,8 5/8,HWE,7.20 MIN/8.09 MA	1	EA		

Tools and Accessories

Type	Size	Qty	Make	Depth	Type	Size	Qty	Make	Depth	Type	Size	Qty	Make
Guide Shoe					Packer					Top Plug	8.625	1	HES
Float Shoe					Bridge Plug					Bottom Plug			
Float Collar					Retainer					SSR plug set			
Insert Float										Plug Container			
Stage Tool										Centralizers			

Miscellaneous Materials

Gelling Agt	Conc	Surfactant	Conc	Acid Type	Qty	Conc	%
Treatment Fld	Conc	Inhibitor	Conc	Sand Type	Size	Qty	

Fluid Data										
Stage/Plug #: 1										
Fluid #	Stage Type	Fluid Name	Qty	Qty uom	Mixing Density lbm/gal	Yield ft ³ /sk	Mix Fluid Gal/sk	Rate bbl/min	Total Mix Fluid Gal/sk	
1	Fresh Water Spacer		20.00	bbl	8.4	.0	.0	.0		
2	VersaCem Lead Cement	VERSACEM (TM) SYSTEM (452010)	195.0	sacks	12.3	2.38	13.77		13.77	
13.77 Gal		FRESH WATER								
3	SwiftCem Tail Cement	SWIFTCEM (TM) SYSTEM (452990)	205.0	sacks	14.2	1.43	6.85		6.85	
6.85 Gal		FRESH WATER								
4	Displacement		73.00	bbl	8.4	.0	.0	.0		
Calculated Values		Pressures		Volumes						
Displacement	73	Shut In: Instant		Lost Returns	0	Cement Slurry	140	Pad		
Top Of Cement	SURFACE	5 Min		Cement Returns	13	Actual Displacement	73	Treatment		
Frac Gradient		15 Min		Spacers	20	Load and Breakdown		Total Job		
Rates										
Circulating		Mixing	5	Displacement	3	Avg. Job	4			
Cement Left In Pipe	Amount	41 ft	Reason	Shoe Joint						
Frac Ring # 1 @	ID	Frac ring # 2 @	ID	Frac Ring # 3 @	ID	Frac Ring # 4 @	ID			
The Information Stated Herein Is Correct				Customer Representative Signature						

The Road to Excellence Starts with Safety

Sold To #: 337854	Ship To #: 2845443	Quote #:	Sales Order #: 8061650
Customer: ANTERO RESOURCES		Customer Rep: Honeycutt, Matt	
Well Name: BURKLE FED	Well #: A14	API/UWI #: 05-045-20490	
Field: MAMM CREEK	City (SAP): SILT	County/Parish: Garfield	State: Colorado
Legal Description:			
Lat: N 39.525 deg. OR N 39 deg. 31 min. 30.972 secs.		Long: W 107.67 deg. OR W -108 deg. 19 min. 46.978 secs.	
Contractor: Craigs Roustabout Service, Inc.		Rig/Platform Name/Num: Craigs #2	
Job Purpose: Cement Surface Casing			Ticket Amount:
Well Type: Development Well		Job Type: Cement Surface Casing	
Sales Person: METLI, MARSHALL		Srv Supervisor: HUGENTOBLE, LOGAN	MBU ID Emp #: 447333

Activity Description	Date/Time	Cht #	Rate bbl/min	Volume bbl		Pressure psig		Comments
				Stage	Total	Tubing	Casing	
Call Out	04/10/2011 16:00							
Pre-Convoy Safety Meeting	04/10/2011 19:00							ALL HES EMPLOYEES
Arrive At Loc	04/10/2011 21:00							RIG STILL RUNNING CASING
Assessment Of Location Safety Meeting	04/10/2011 21:15							ALL HES EMPLOYEES
Rig-Up Equipment	04/10/2011 21:30							1 HT-400 PUMP TRUCK, 1 660 BULK TRUCK, 1 F-450 P/U, 1 SWEDGE, 1 BODY LOAD
Pre-Job Safety Meeting	04/10/2011 23:00							ALL HES EMPLOYEES, RIG CREW, CO REP AND ANY 3RD PARTY VENDORS
Start Job	04/10/2011 23:18							TP 1245 FT, TD 1260FT, FC 1204 FT, HOLE 12.25", MUD WT AIR, RATE WILL BE 5, WILL BUMP 500 PSI OVER LAND PSI
Pump Water	04/10/2011 23:21		2	2			7.0	FILL LINES PRIOR TO PRESSURE TESTING LINES
Pressure Test	04/10/2011 23:24							NO LEAKS, KICK OUTS SET TO 3000 PSI FOR TEST.
Pump Spacer 1	04/10/2011 23:29		5	20			40.0	FRESH WATER
Activity Description	Date/Time	Cht #	Rate bbl/min	Volume bbl		Pressure psig		Comments
				Stage	Total	Tubing	Casing	

Sold To # : 337854

Ship To # :2845443

Quote # :

Sales Order # :

8061650

SUMMIT Version: 7.20.130

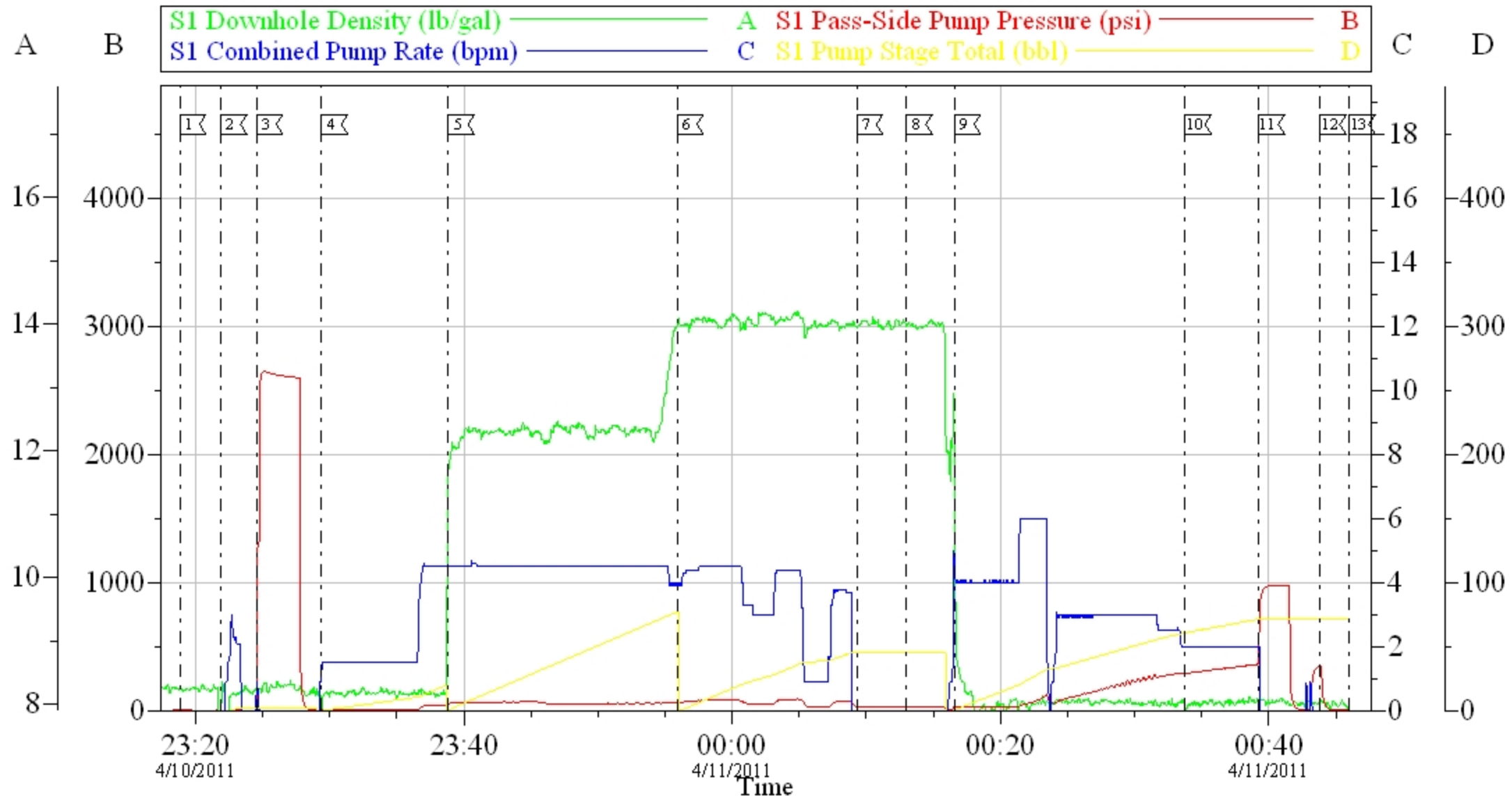
Monday, April 11, 2011 01:07:00

Cementing Job Log

Pump Lead Cement	04/10/2011 23:38		5	82			73.0	195 SKS VERSACEM CMT TO BE MIXED AT 12.3 PPG, 2.38 YIELD, 13.77 GAL/SK, CMT TO BE WEIGHED VIA PRESSURE BALANCED MUD SCALES WET AND DRY SAMPLES SUBMITTED.
Pump Tail Cement	04/10/2011 23:55		5	52			87.0	205 SKS SWIFTCM CMT TO BE MIXED AT 14.2 PPG, 1.43 YIELD, 6.85 GAL/SK, CMT TO BE WEIGHED VIA PRESSURE BALANCED MUD SCALES, WET AND DRY SAMPLES SUBMITTED,
Shutdown	04/11/2011 00:09							
Drop Plug	04/11/2011 00:13							PLUG LAUNCHED
Pump Displacement	04/11/2011 00:16		3	73			280.0	FRESH WATER
Slow Rate	04/11/2011 00:33		2				297.0	10 BBLS PRIOR TO CALCULATED DISPLACEMENT
Bump Plug	04/11/2011 00:39		2				876.0	PLUG LANDED
Check Floats	04/11/2011 00:43							FLOATS HOLDING, 13 BBLS CEMENT TO SURFACE
End Job	04/11/2011 00:46							THANK YOU FOR USING HES LOGAN HUGENTOBLE AND CREW
Post-Job Safety Meeting (Pre Rig-Down)	04/11/2011 00:50							ALL HES EMPLOYEES
Rig-Down Equipment	04/11/2011 01:00							
Pre-Convoy Safety Meeting	04/11/2011 02:30							ALL HES EMPLOYEES
Crew Leave Location	04/11/2011 02:45							LOCATION CLEAN

ANTERO

8.625 SURFACE PIPE



Local Event Log								
1	START JOB	4/10/2011 23:18:50	2	PRIME LINES	4/10/2011 23:21:53	3	PRESSURE TEST	4/10/2011 23:24:34
4	PUMP H2O SPACER	4/10/2011 23:29:24	5	PUMP LEAD CEMENT	4/10/2011 23:38:51	6	PUMP TAIL CEMENT	4/10/2011 23:55:55
7	SHUTDOWN	4/11/2011 00:09:18	8	DROP PLUG	4/11/2011 00:13:00	9	PUMP DISPLACEMENT	4/11/2011 00:16:34
10	SLOW RATE	4/11/2011 00:33:46	11	BUMP PLUG	4/11/2011 00:39:15	12	CHECK FLOATS	4/11/2011 00:43:50
13	END JOB	4/11/2011 00:46:01						

Customer: ANTERO
 Well Description: BURKLE A14
 Company Rep: MATT HONEYCUT

Job Date: 10-Apr-2011
 Job Type: SURFACE
 Cement Supervisor: LOGAN HUGENTOBLER

Sales Order #: 8061650
 ADC Used: YES
 Elite #6 / Operator: BROCK COSTELDIA

OptiCem v6.4.10
 11-Apr-11 00:53