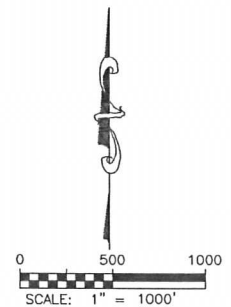
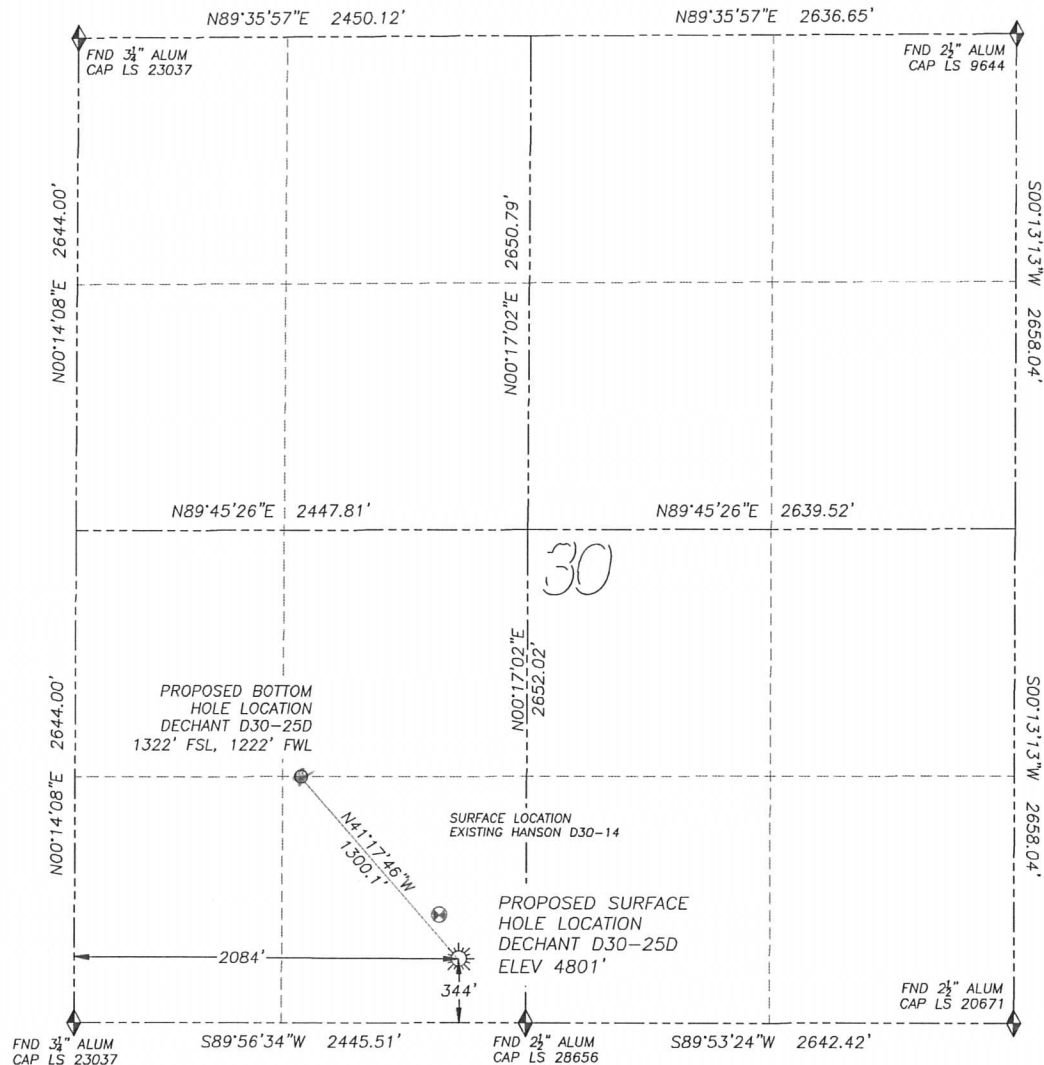


# WELL LOCATION CERTIFICATE

## DECHANT D30-25D

SECTION 30, TOWNSHIP 3 NORTH, RANGE 64 WEST OF THE 6TH PRINCIPAL MERIDIAN

**LEGEND**

- ◆ FOUND MONUMENT AS DESCRIBED
- ☼ PROPOSED WELL
- EXISTING HOLE
- BOTTOM HOLE
- ⊗ ABANDONED WELL

**NAD 83 LATITUDE AND LONGITUDE**

DECHANT D30-25D SURFACE HOLE:

LATITUDE: N40.18983°

LONGITUDE: W104.59535°

ELEVATION: 4801'

FOOTAGE: 344' FSL, 2084' FWL

PDOP: 1.4

QTR/QTR: SE4/SW4

PROP LINE: 344'± SOUTH

BOTTOM HOLE:

LATITUDE: N40.19251°

LONGITUDE: W104.59842°

FOOTAGE: 1322' FSL, 1222' FWL

**NEAREST EXISTING WELL:**

HANSON D30-14 SURFACE HOLE

LATITUDE: N40.19047°

LONGITUDE: W104.59572°

ELEVATION: 4800'

257' NORTHWEST

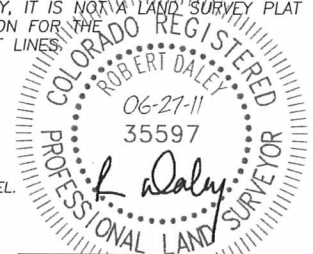
IN ACCORDANCE WITH A REQUEST FROM SEAN CASPER OF NOBLE ENERGY INC., DALEY LAND SURVEYING, INC. HAS DETERMINED THE SURFACE LOCATION OF THE DECHANT D30-25D WELL TO BE 344' FSL, 2084' FWL, AS MEASURED AT NINETY (90) DEGREES FROM THE SECTION LINES OF SECTION 30, TOWNSHIP 3 NORTH, RANGE 64 WEST OF THE 6TH PRINCIPAL MERIDIAN, WELD COUNTY, COLORADO. THE BOTTOM HOLE LOCATION, PROVIDED BY THE CLIENT, IS TO BE 1322' FSL, 1222' FWL.

I HEREBY CERTIFY THAT THIS WELL LOCATION CERTIFICATE WAS PREPARED BY ME OR UNDER MY DIRECT SUPERVISION, THAT THE WORK WAS COMPLETED ON 6/23/2011 FOR AND ON BEHALF OF NOBLE ENERGY, INC., AND THAT THIS MAP DOES NOT REPRESENT A BOUNDARY SURVEY, IT IS NOT A LAND SURVEY PLAT OR AN IMPROVEMENT SURVEY PLAT AND IT IS NOT TO BE RELIED UPON FOR THE ESTABLISHMENT OF FENCE, BUILDING OR OTHER FUTURE IMPROVEMENT LINES.

**NOTES:**

- 1) BEARINGS FOR THIS MAP ARE ASSUMED AND BASED UPON GPS OBSERVATIONS MADE BETWEEN MONUMENTS LOCATED AT THE SOUTHWEST CORNER AND SOUTH QUARTER CORNER OF SECTION 30, T.3N., R.64W.
- 2) HORIZONTAL DATUM IS NAD83.
- 3) VERTICAL DATUM IS NAVD88. ELEVATIONS ARE DERIVED FROM GPS OBSERVATIONS PROCESSED THROUGH OPUS, UTILIZING THE GEOID03 MODEL.
- 4) SEE LOCATION DRAWING FOR VISIBLE IMPROVEMENTS WITHIN 600' OF PROPOSED SURFACE HOLE LOCATION.
- 5) SURFACE USE: AGRICULTURAL.

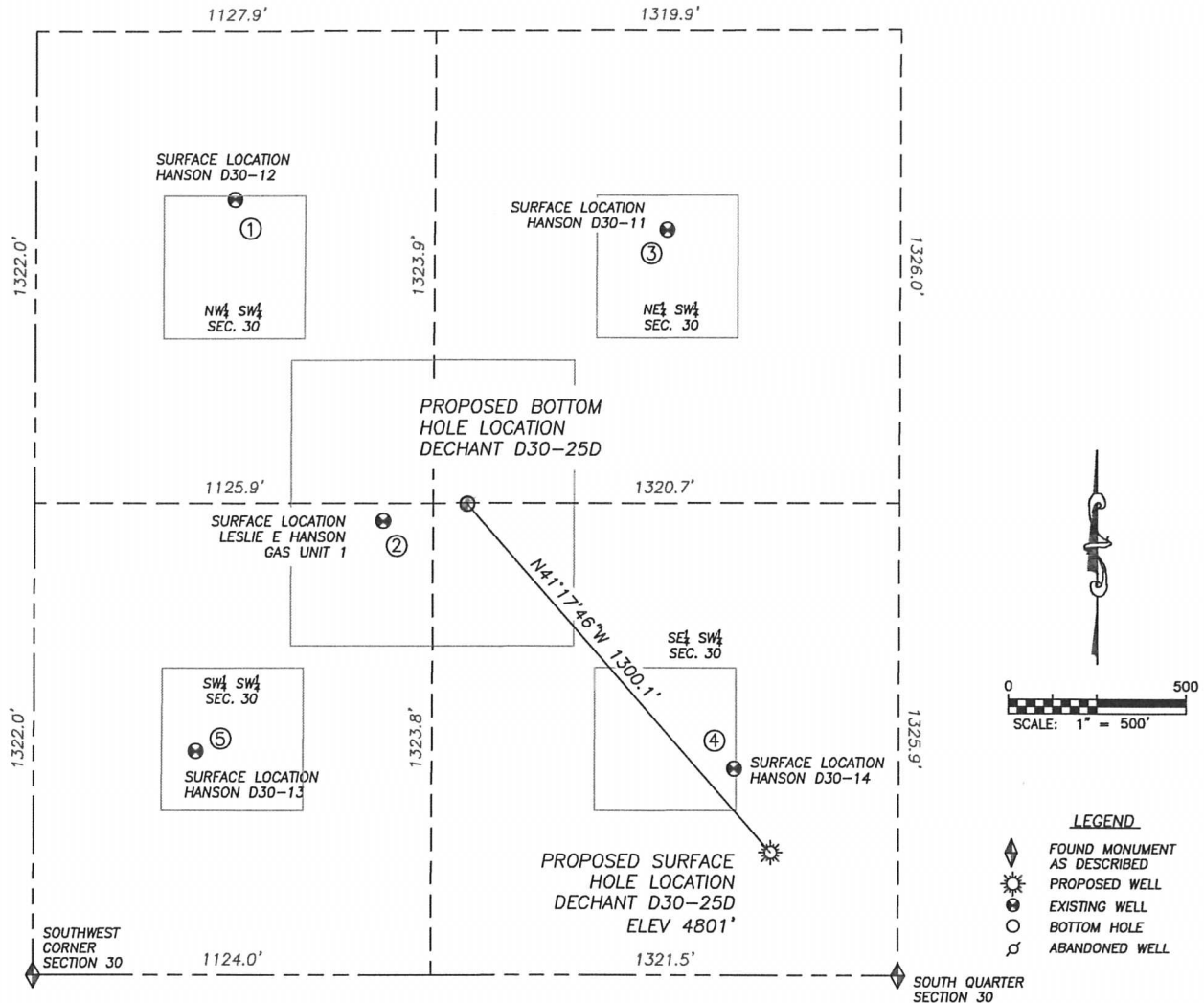
NOTICE: According to Colorado law you MUST commence any legal action based upon any defect in this W.L.C. within three years after you first discover such defect. In no event may any action based upon any such defect in this W.L.C. be commenced more than ten years from the date of the certification shown herein.



FOR AND ON BEHALF OF  
DALEY LAND SURVEYING INC.,  
Robert Daley, PLS 35597

## SITE SKETCH DECHANT D30-25D

SECTION 30, TOWNSHIP 3 NORTH, RANGE 64 WEST OF THE 6TH PRINCIPAL MERIDIAN



①

HANSON D30-12  
NW/SW SEC. 30  
2173' FSL, 562' FWL  
1074' NW OF PROPOSED  
BOTTOM HOLE LOCATION  
LAT. N40.19485°  
LONG. W104.60077°  
EL: 4794'  
PDOP 1.4

②

LESLIE E HANSON  
GAS UNIT 1  
SW/SW SEC. 30  
1273' FSL, 985' FWL  
242' SW OF PROPOSED  
BOTTOM HOLE LOCATION  
LAT. N40.19237°  
LONG. W104.59927°  
EL: 4798'  
PDOP 2.3

③

HANSON D30-11  
NE/SW SEC. 30  
2090' FSL, 1786' FWL  
955' NE OF PROPOSED  
BOTTOM HOLE LOCATION  
LAT. N40.19462°  
LONG. W104.59639°  
EL: 4794'  
PDOP 2.3

④

HANSON D30-14  
SE/SW SEC. 30  
580' FSL, 1980' FWL  
1058' SE OF PROPOSED  
BOTTOM HOLE LOCATION  
LAT. N40.19047°  
LONG. W104.59572°  
EL: 4800'  
PDOP 2.6

⑤

HANSON D30-13  
SW/SW SEC. 30  
627' FSL, 458' FWL  
1035' SW OF PROPOSED  
BOTTOM HOLE LOCATION  
LAT. N40.19060°  
LONG. W104.60117°  
EL: 4801'  
PDOP 2.1

## NOTES:

- THIS DOES NOT REPRESENT A BOUNDARY SURVEY
- THE LATITUDES AND LONGITUDES SHOWN ARE REFERENCED TO NAD83
- DATUM FOR ELEVATION IS NAVD88. ELEVATIONS ARE DERIVED FROM GPS-RTK OBSERVATIONS PROCESSED THROUGH OPUS, UTILIZING THE GEOID03 MODEL.

