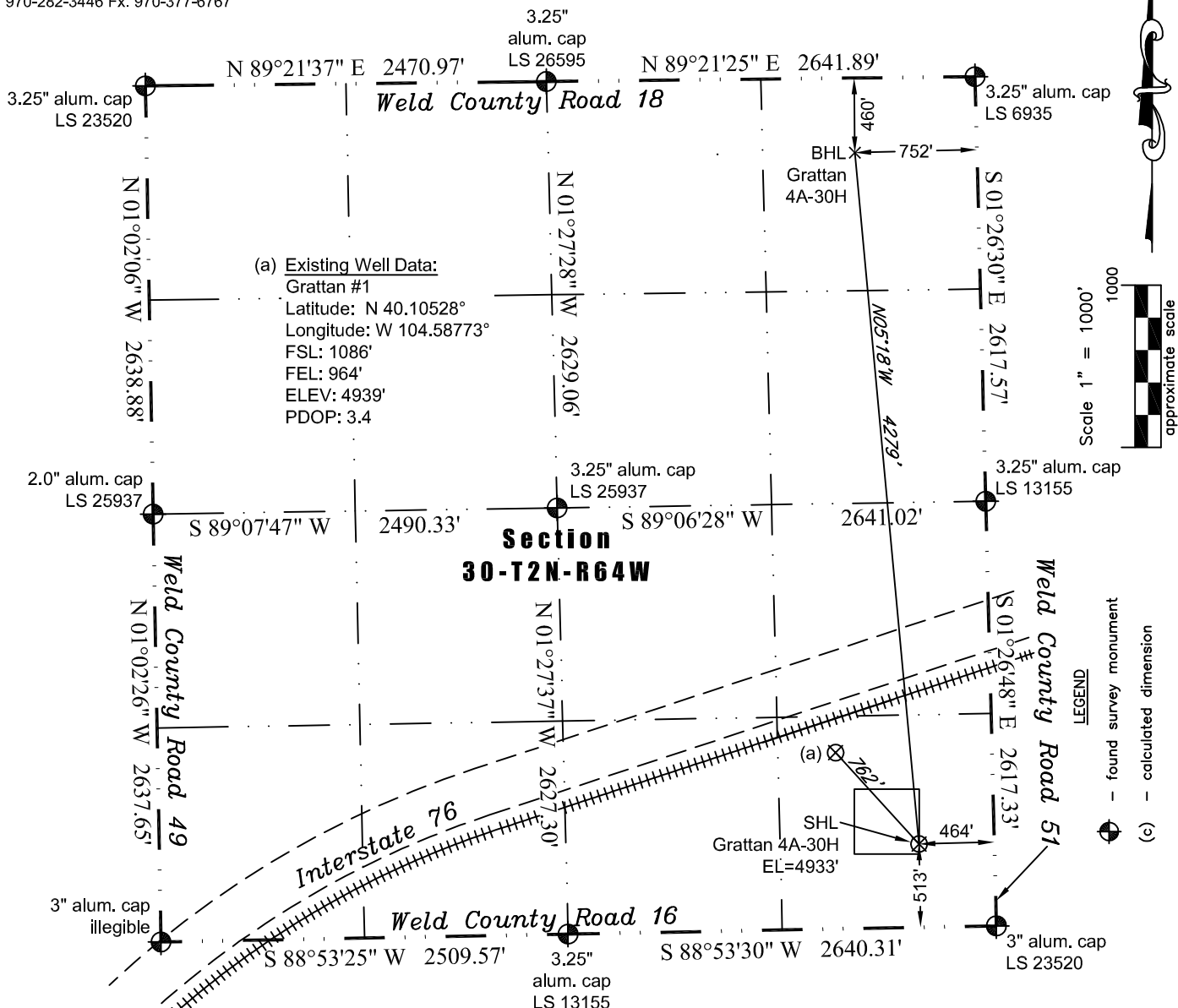


PLS Group, LLC
109 Coronado Ct. - Bldg. 7
Fort Collins, Colorado 80525
P. 970-282-3446 Fx. 970-377-6767

WELL LOCATION CERTIFICATE

THIS MAP DOES NOT REPRESENT A BOUNDARY SURVEY



In accordance with a request from Jay Knutson of EnCana Oil & Gas (USA) Inc., PLS Group, LLC has determined the location of the Grattan 4A-30H well site to be SHL 513' FSL and 464' FEL (BHL 460' FNL and 752' FEL) as measured at ninety (90) degrees from the section lines of Section 30, Township 2 North, Range 64 West of the 6th Principal Meridian, Weld County, Colorado.

Proposed Surface Hole Data:

Latitude: N 40.10372° (BHL 40.11543°)
Longitude: W 104.58591° (BHL 104.58717°)
PDOP: 1.2

Nearest:

Building 282' southeast
Public Road 452' east
Property Line 464' east
Existing Well: Grattan #1 762' northwest

Above Ground Utility 430' east
Railroad 895' northwest
Well Window: SHL is 0.4' inside

Notes:

- 1) Bearings and distances based on NAD 83 Colorado North State Plane Coordinates using RTK GPS observations taken 7/1/11 by operator Tom Winans.
- 2) Conversion factor to ground (1.000273635).
- 3) Elevations based on NAVD 88 GPS heights and Geoid 2003 corrections.
- 4) See Location Drawing for visible improvements within 400 feet.
- 5) The surface use is uncultivated agricultural field.

NOTICE: According to Colorado law you must commence any legal action based upon any defect in this W.L.C. within three years after you first discover such defect. In no event may any action based upon any defect in this W.L.C. be commenced more than ten years from this said date of the certification shown hereon.

I hereby certify that this Well Location Certificate was prepared by me or under my direct supervision on 7/6/2011 for and on behalf of EnCana Oil & Gas (USA) Inc. That it is not a Land Survey Plat or an Improvement Survey Plat and that it is not to be relied upon for establishment of fences, buildings, or other future improvement lines.

John Robert McGehee LS#38219
Well: Grattan 4A-30H WLC