

T6N, R61W, 6th. P.M.

2007 Alum. Cap.  
Flush W/Ground  
RLS #38019  
Lat: 40.509764°  
Long: 104.223764°

2011 UELS 2 1/2  
Alum. Cap.  
0.3' High  
LS #17492  
Lat: 40.509944°  
Long: 104.204617°

EOG RESOURCES, INC.

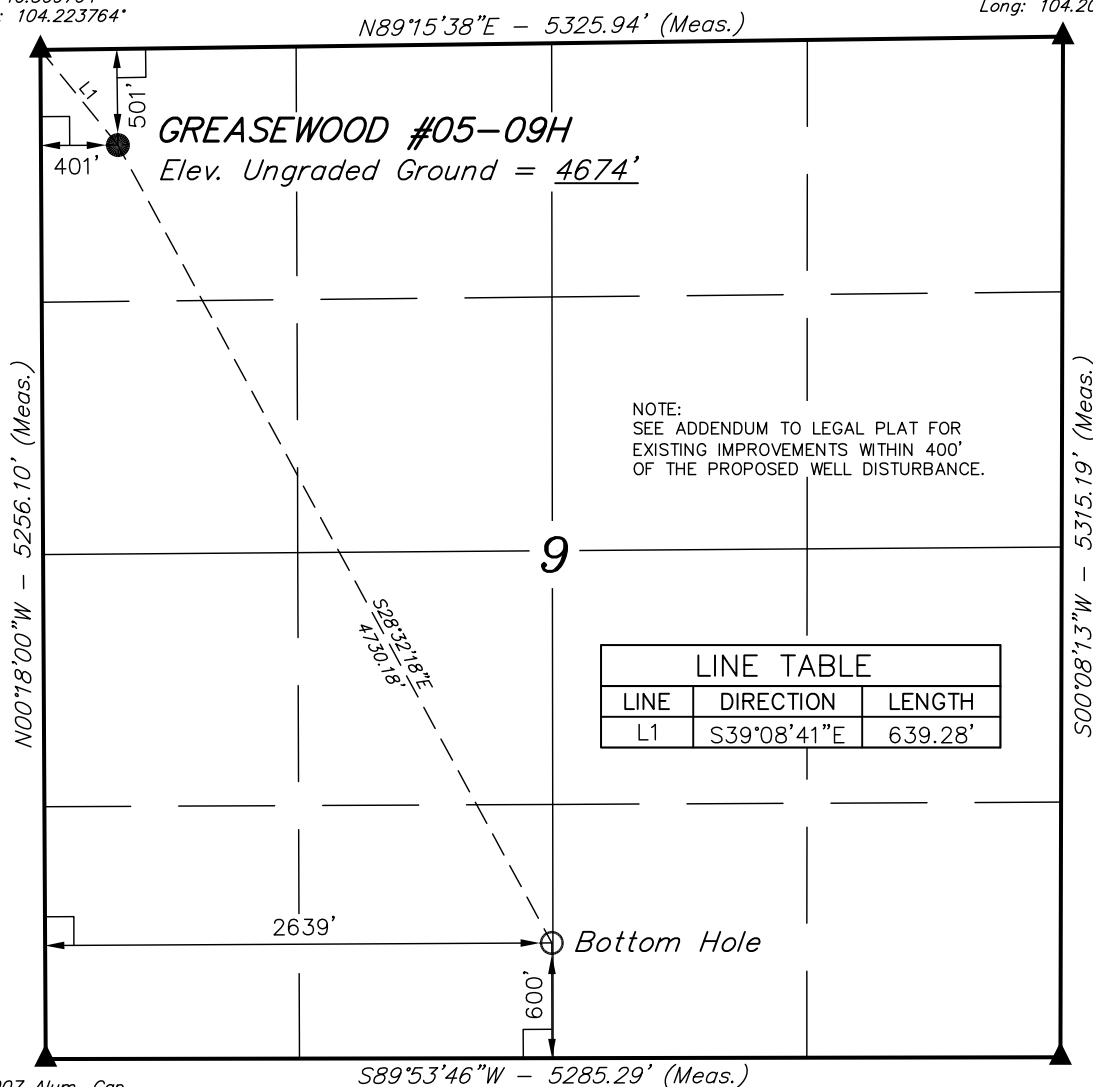
Well location, GREASEWOOD #05-09H, located as shown in the NW 1/4 NW 1/4 of Section 9, T6N, R61W, 6th. P.M., Weld County, Colorado.

### BASIS OF ELEVATION

SPOT ELEVATION LOCATED AT THE NORTHEAST CORNER OF SECTION 24, T5N, R62W, 6th. P.M. TAKEN FROM THE POINT OF ROCKS, QUADRANGLE, COLORADO, WELD COUNTY, 7.5 MINUTE QUAD (TOPOGRAPHIC MAP) PUBLISHED BY THE UNITED STATES DEPARTMENT OF THE INTERIOR, GEOLOGICAL SURVEY. SAID ELEVATION IS MARKED AS BEING 4530 FEET.

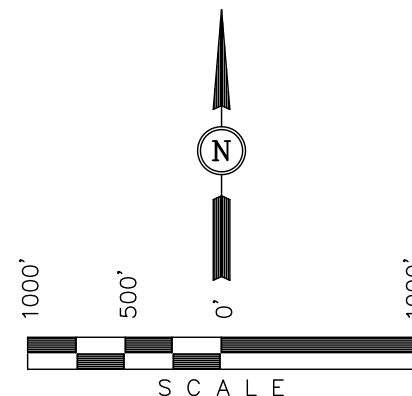
### BASIS OF BEARINGS

BASIS OF BEARINGS IS A G.P.S. OBSERVATION.



NOTE:  
SEE ADDENDUM TO LEGAL PLAT FOR  
EXISTING IMPROVEMENTS WITHIN 400'  
OF THE PROPOSED WELL DISTURBANCE.

LINE TABLE		
LINE	DIRECTION	LENGTH
L1	S39°08'41\"E	639.28'



### CERTIFICATE

THIS IS TO CERTIFY THAT THE ABOVE PLAT WAS PREPARED FROM FIELD NOTES OF ACTUAL SURVEYS MADE BY ME OR UNDER MY SUPERVISION AND THAT THE SAME ARE TRUE AND CORRECT TO THE BEST OF MY KNOWLEDGE AND BELIEF.

REGISTERED LAND SURVEYOR  
REGISTRATION NO. 17492  
STATE OF COLORADO

2007 Alum. Cap.  
RLS #38019  
Lat: 40.495339°  
Long: 104.223672°

2011 UELS 2 1/2  
Alum. Cap.  
0.5' High  
LS #17492  
Lat: 40.495358°  
Long: 104.204672°

PDOP = 1.6

### LEGEND:

- └─┘ = 90° SYMBOL
- = PROPOSED WELL HEAD.
- ▲ = SECTION CORNERS LOCATED.

NAD 83 (TARGET BOTTOM HOLE)	NAD 83 (SURFACE LOCATION)
LATITUDE = 40°29'49.19" (40.496997)	LATITUDE = 40°30'30.25" (40.508403)
LONGITUDE = 104°12'51.11" (104.214197)	LONGITUDE = 104°13'20.33" (104.222314)
NAD 27 (TARGET BOTTOM HOLE)	NAD 27 (SURFACE LOCATION)
LATITUDE = 40°29'49.25" (40.497014)	LATITUDE = 40°30'30.31" (40.508419)
LONGITUDE = 104°12'49.29" (104.213692)	LONGITUDE = 104°13'18.51" (104.221808)
STATE PLANE NAD 83 COLORADO NORTH	STATE PLANE NAD 83 COLORADO NORTH
N: 1426489.14 E: 3357584.48	N: 1430611.19 E: 3355267.50
STATE PLANE NAD 27 COLORADO NORTH	STATE PLANE NAD 27 COLORADO NORTH
N: 426489.54 E: 2357734.49	N: 430611.53 E: 2355417.39

UINTAH ENGINEERING & LAND SURVEYING  
85 SOUTH 200 EAST - VERNAL, UTAH 84078  
(435) 789-1017

SCALE 1" = 1000'	DATE SURVEYED: 05-31-11	DATE DRAWN: 06-10-11
PARTY D.N. C.Z. Z.L.	REFERENCES G.L.O. PLAT	
WEATHER WARM	FILE EOG RESOURCES, INC.	