



SUPERIOR
Black Lick, Pa.
Mercer, Pa.
Wooster, Oh.
Cleveland, Ok.
Trinidad, Co.

CEMENT BOND GAMMA RAY

Company Pioneer Natural Resources
Well General Vera 11-28
Field Purgatorie River
County Las Animas
State CO

Company Pioneer Natural Resources
Well General Vera 11-28
Field Purgatorie River
County Las Animas
State CO

Location: API # : 05 071 09084 00

1094' FNL & 210' FWL

SEC 28 TWP 31S RGE 66W

Permanent Datum Ground Level Elevation 7262'
Log Measured From Kelly Bushing 4' Above G.L.
Drilling Measured From Kelly Bushing

Other Services
DEVI SUR/
TEMP

Elevation

K.B. 7266'
D.F. -----
G.L. 7262'

Date 3/13/07

Run Number one

Depth Driller 2490'

Depth Logger 2322'

Bottom Logged Interval 2318'

Top Log Interval Surf.

Open Hole Size 7 7/8"

Type Fluid water

Density / Viscosity ///

Max. Recorded Temp. 125F

Estimated Cement Top 184'

Time Well Ready ROA

Time Logger on Bottom 10:40

Equipment Number 0703

Location Trinidad

Recorded By Worley

Witnessed By

Run Number

Bit From To

Size

Weight

From To

Size

Wgt/Ft

Top Bottom

Size

Weight

From To

Size

Wgt/Ft

Top Bottom

Size

Wgt/Ft

Top

Bottom

700'

00

00

NA

NA

<<< Fold Here >>>

All interpretations are opinions based on inferences from electrical or other measurements and we cannot and do not guarantee the accuracy or correctness of any interpretation, and we shall not, except in the case of gross or willful negligence on our part, be liable or responsible for any loss, costs, damages, or expenses incurred or sustained by anyone resulting from any interpretation made by any of our officers, agents or employees. These interpretations are also subject to our general terms and conditions set out in our current Price Schedule.

Comments

Gulnare west, at Y just before Jarosa gravel pit stay right,
go .8 miles and take right, take first left to location.

4.5 Degrees of Deviation @ T.D.



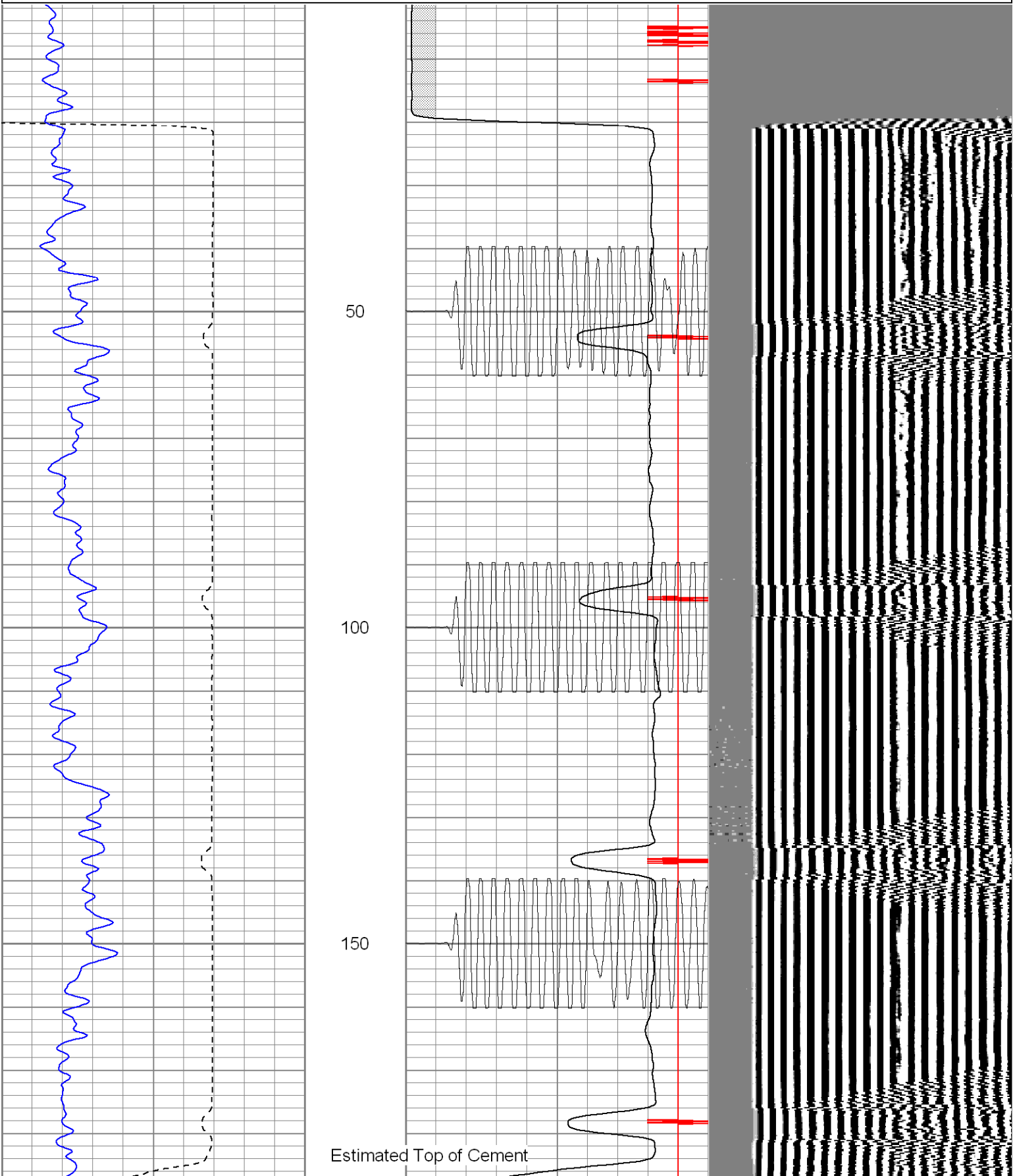
SUPERIOR

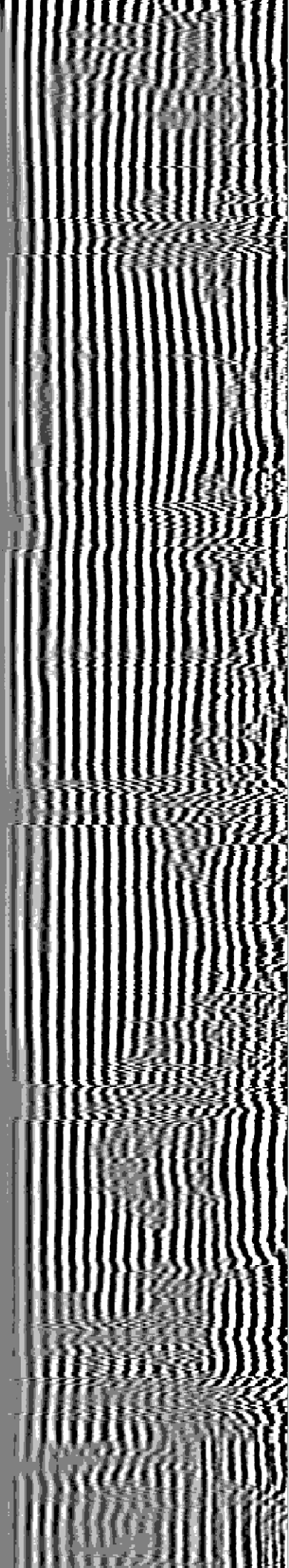
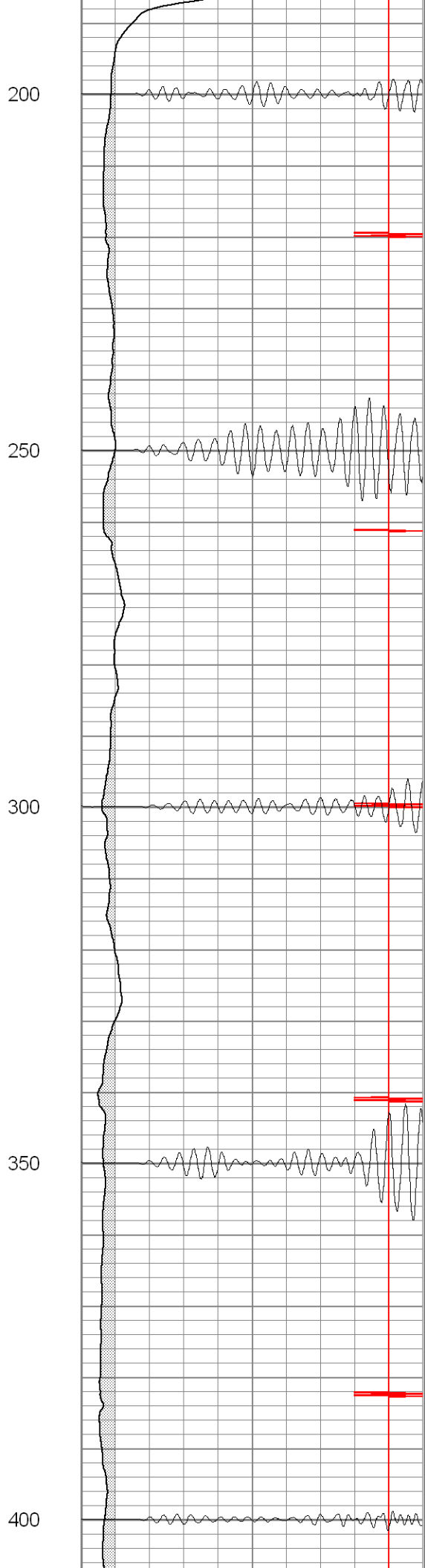
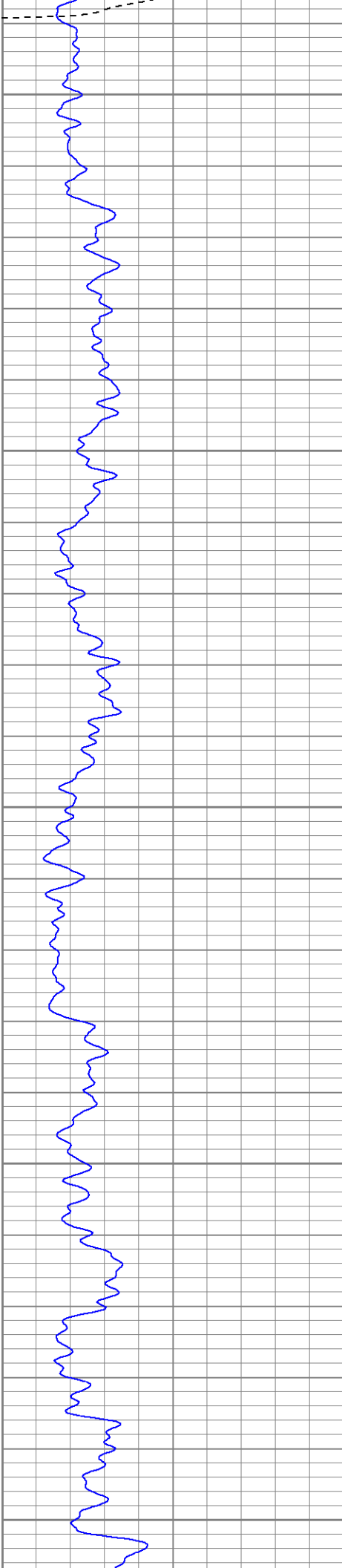
Black Lick, Pa.
Mercer, Pa.
Wooster, Oh.
Cleveland, Ok.
Trinidad, Co.

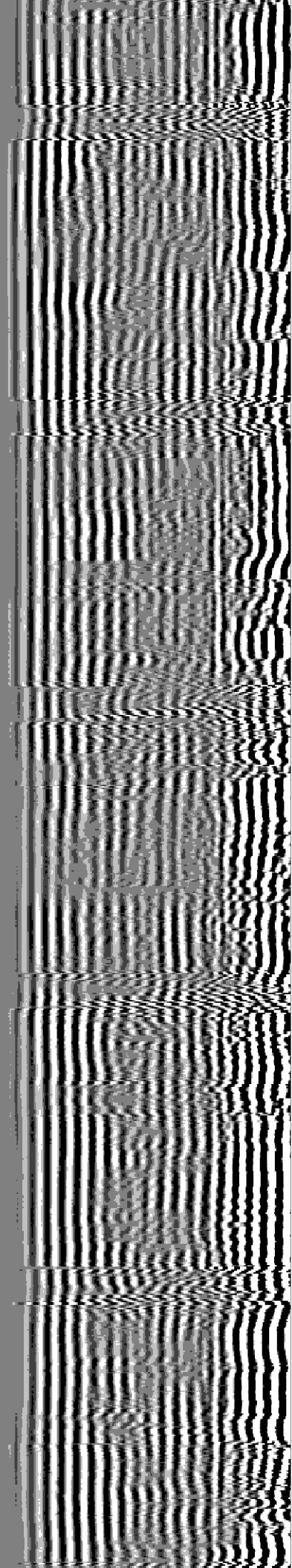
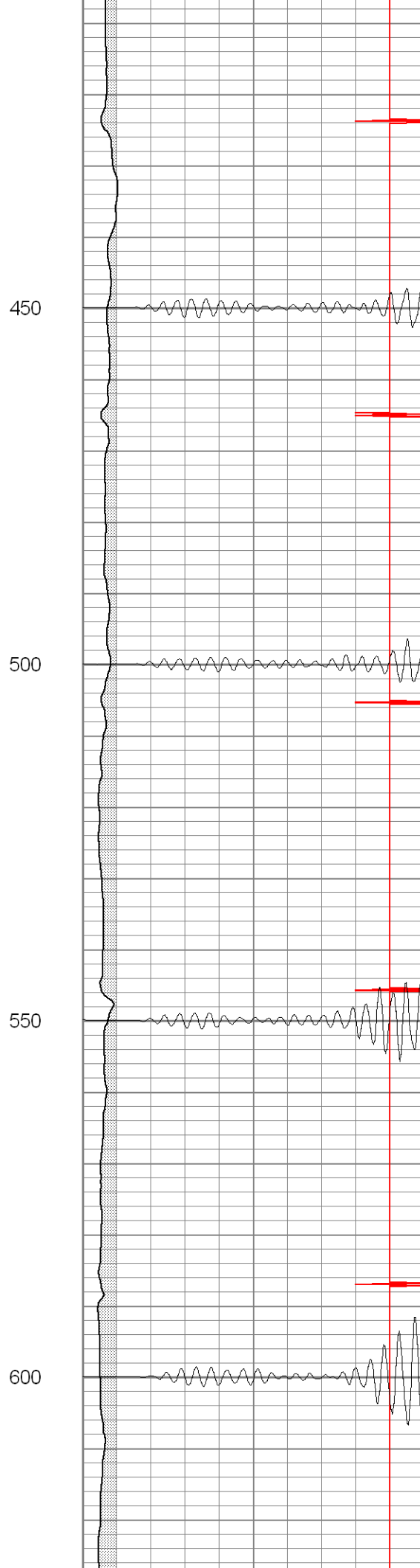
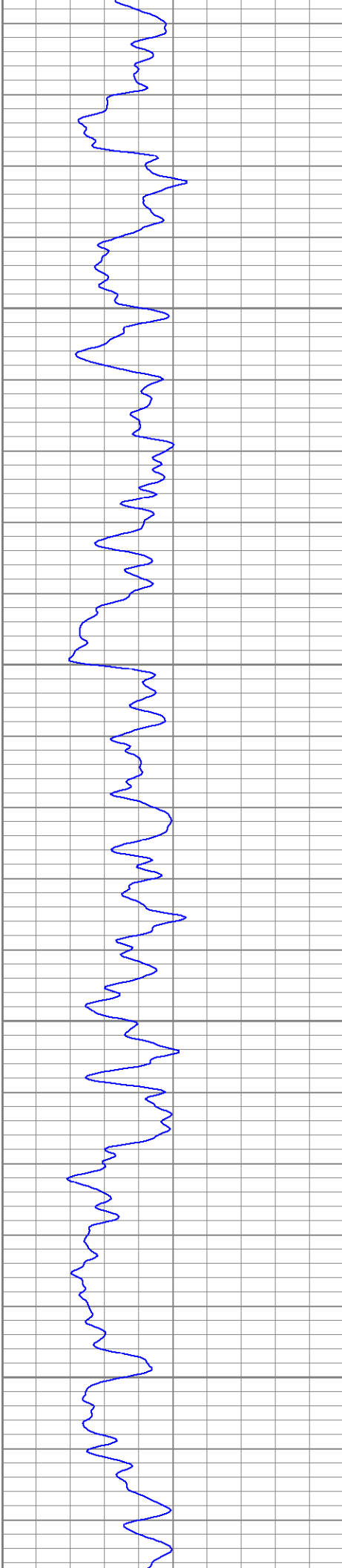
Main Pass

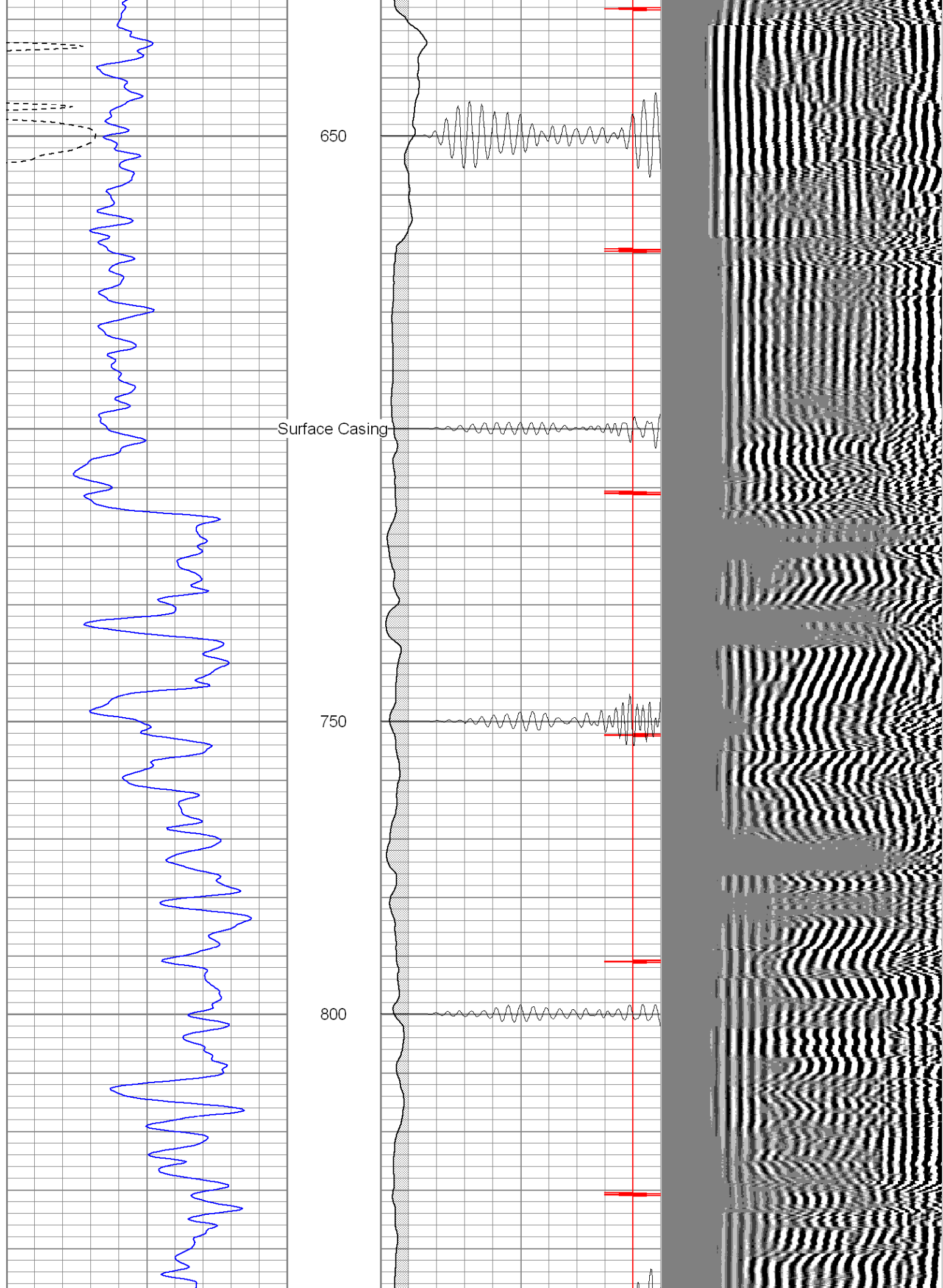
Database File: generalvera31307b.db
Dataset Pathname: pass2.2
Presentation Format: cblrt
Dataset Creation: Tue Mar 13 11:47:32 2007 by Calc Warrior 7.0 STD Cas
Charted by: Depth in Feet scaled 1:240

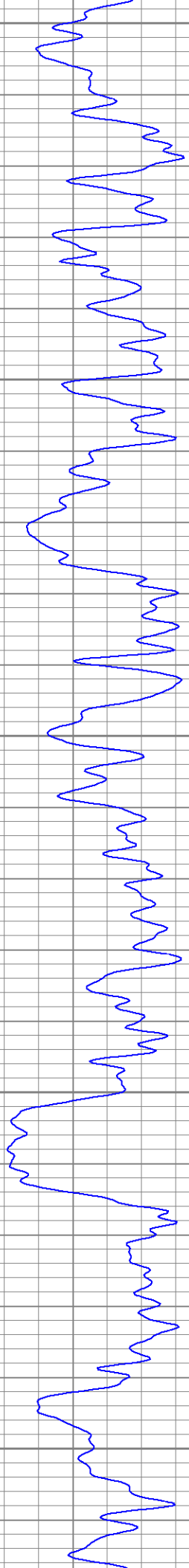
0	GR (GAPI)	200	0	AMP3 (mV)	100	200	Variable Density	1200
400	TT3 (usec)	200	18	CCL	-2			
			200	CBL5	1200			



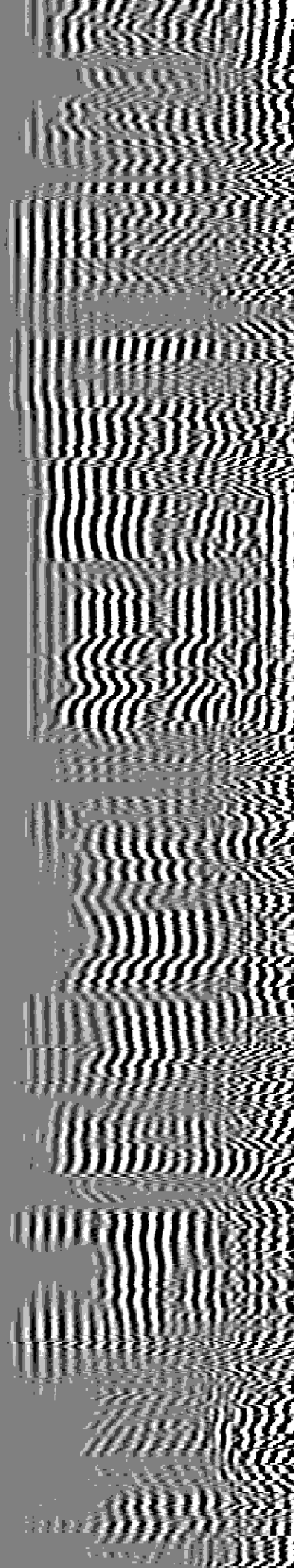


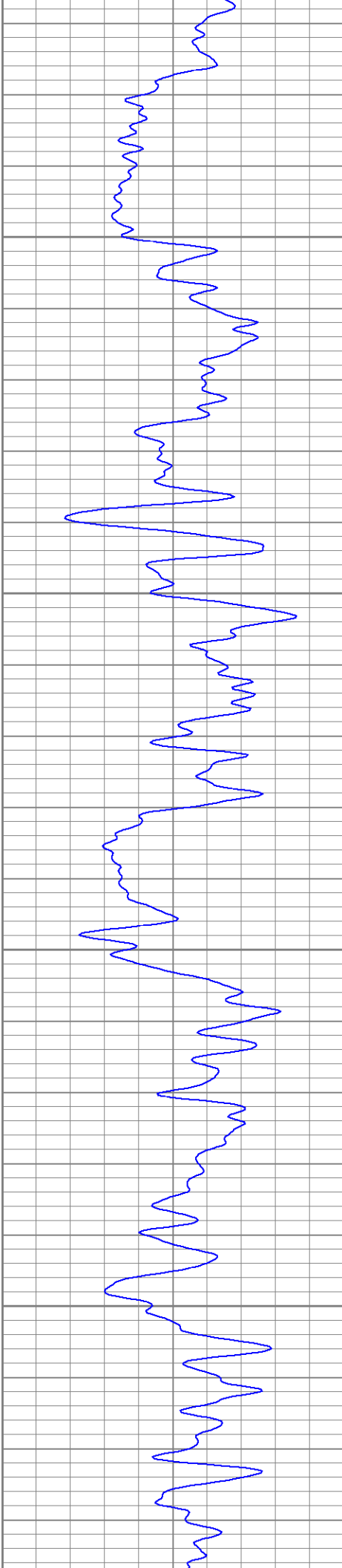






850
900
950
1000
1050



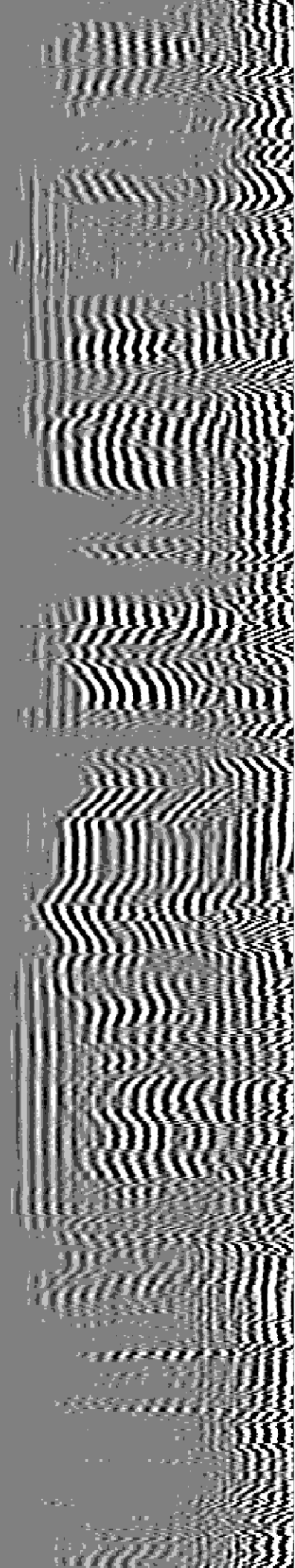
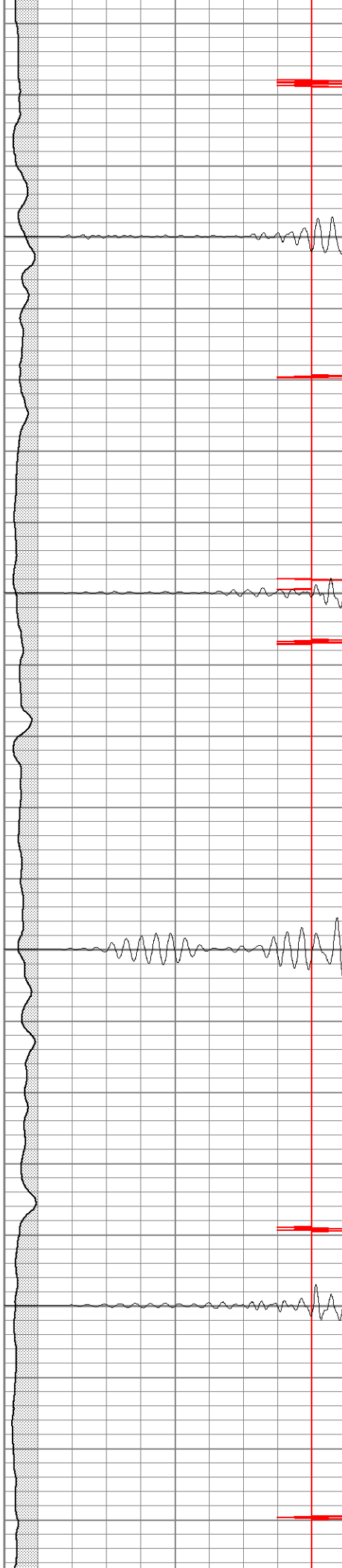


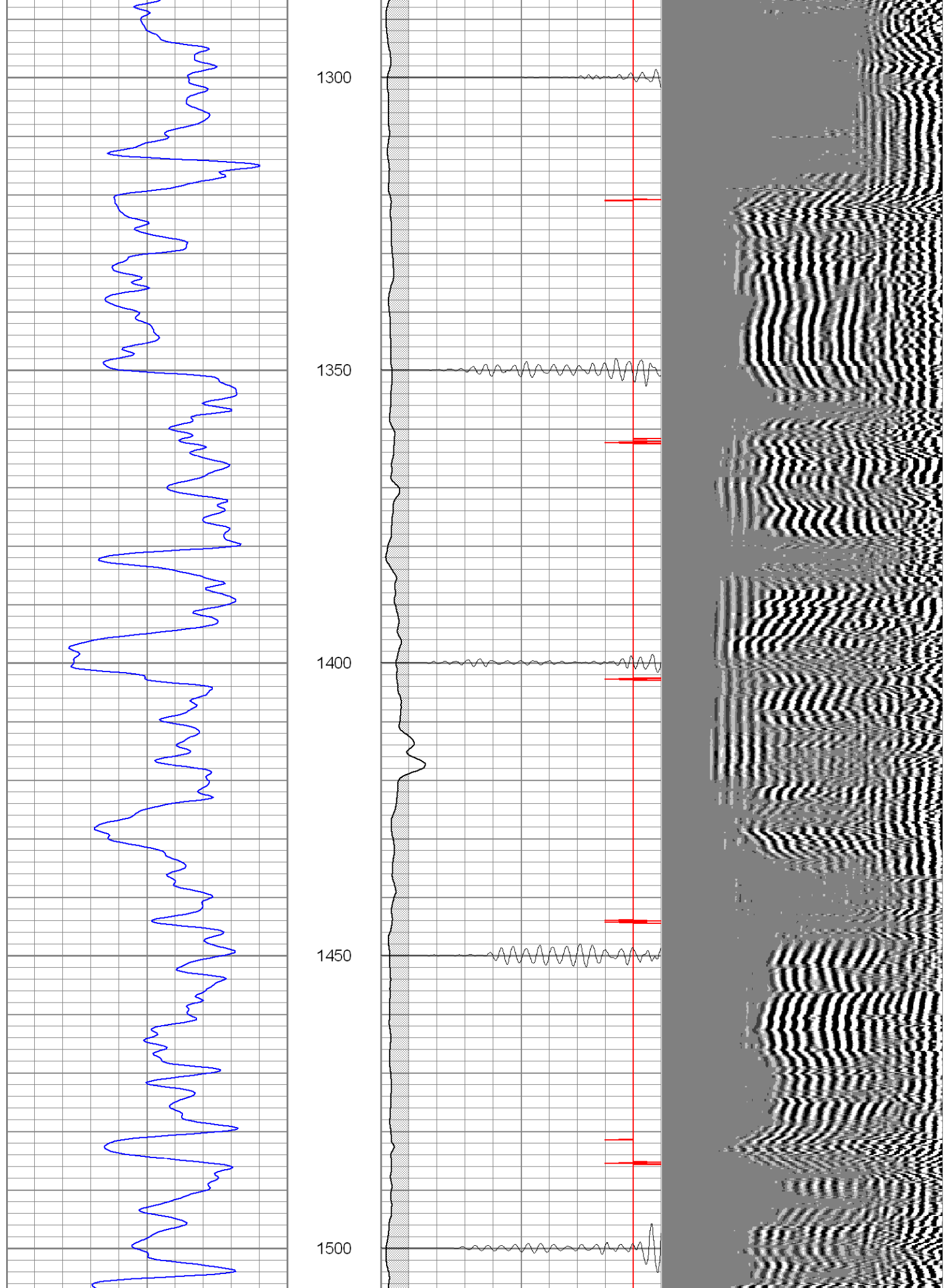
1100

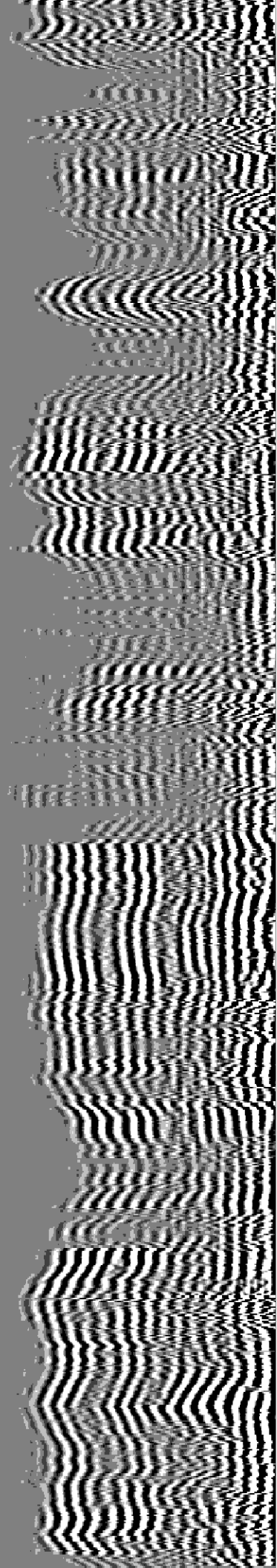
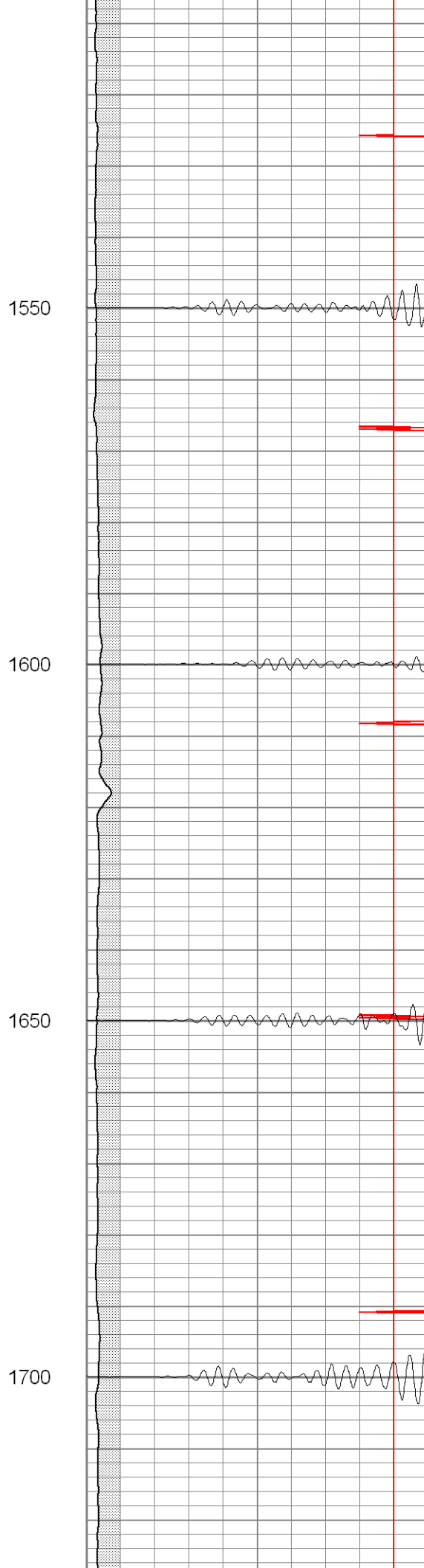
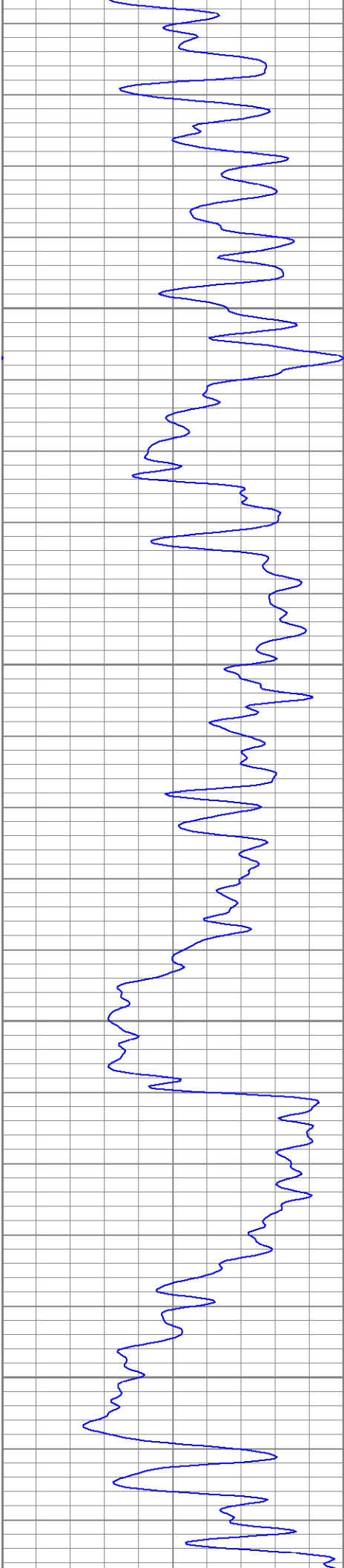
1150

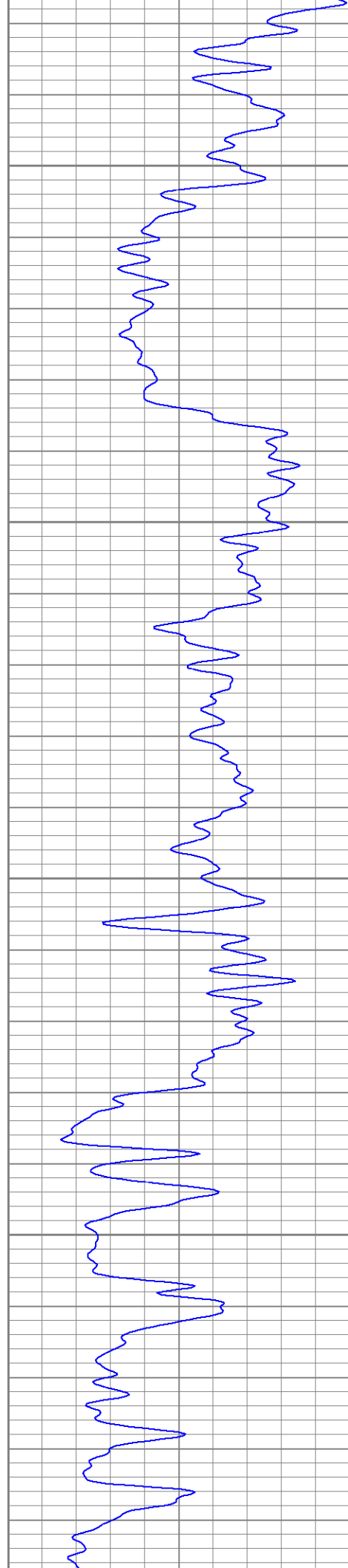
1200

1250







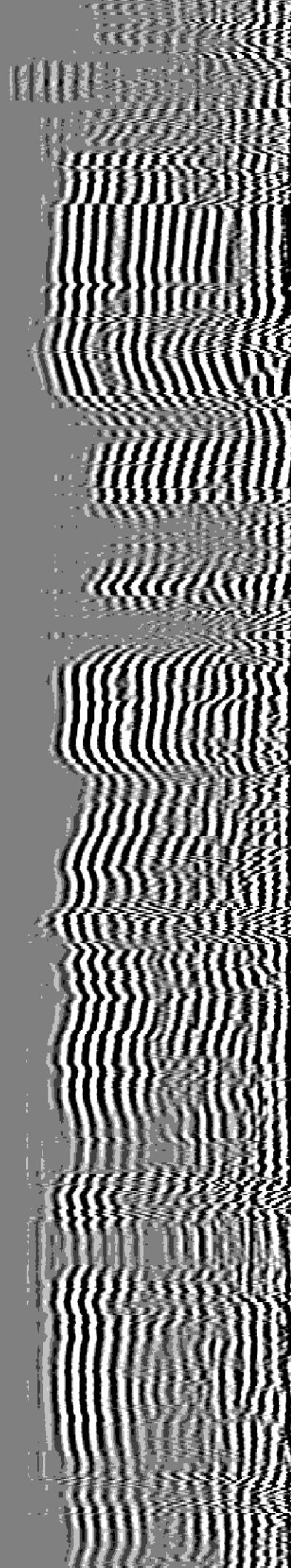
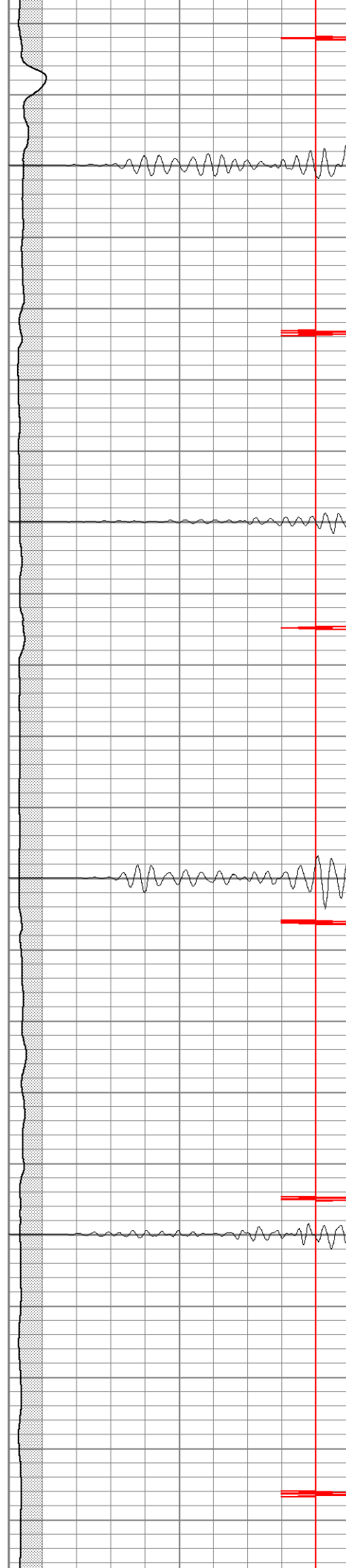


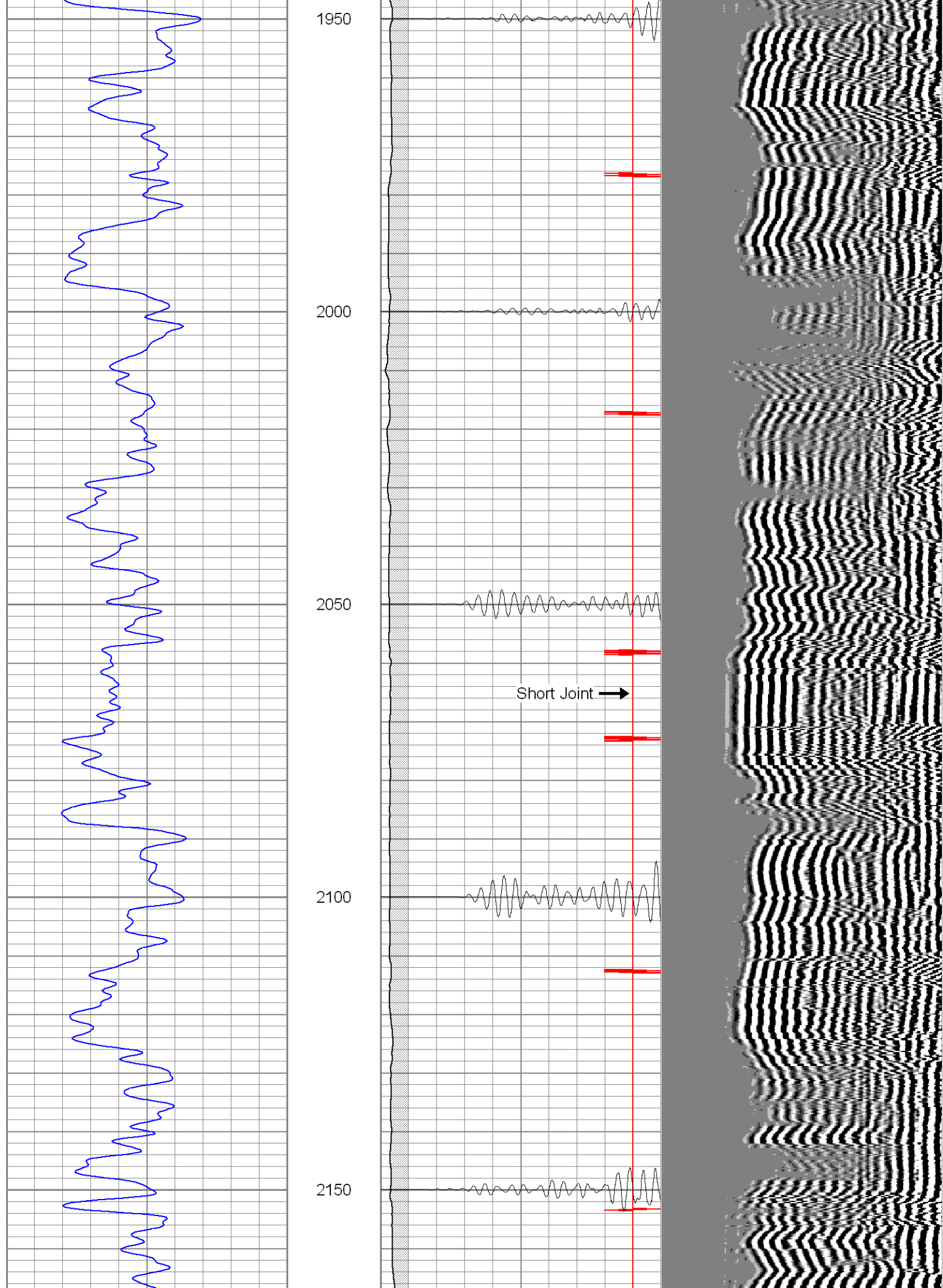
1750

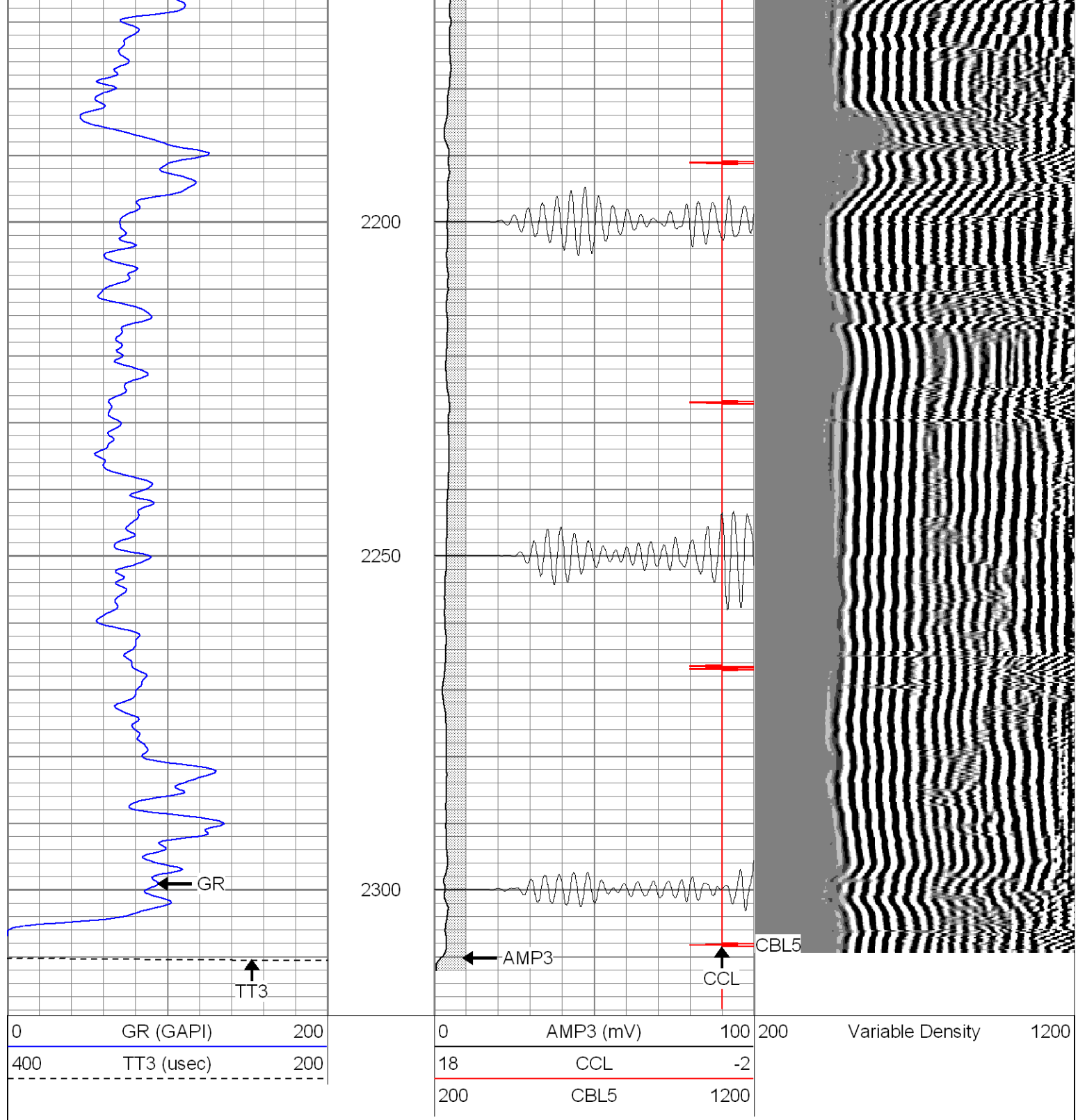
1800

1850

1900





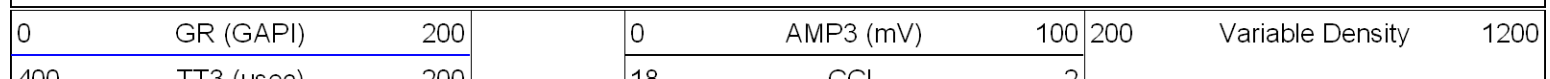


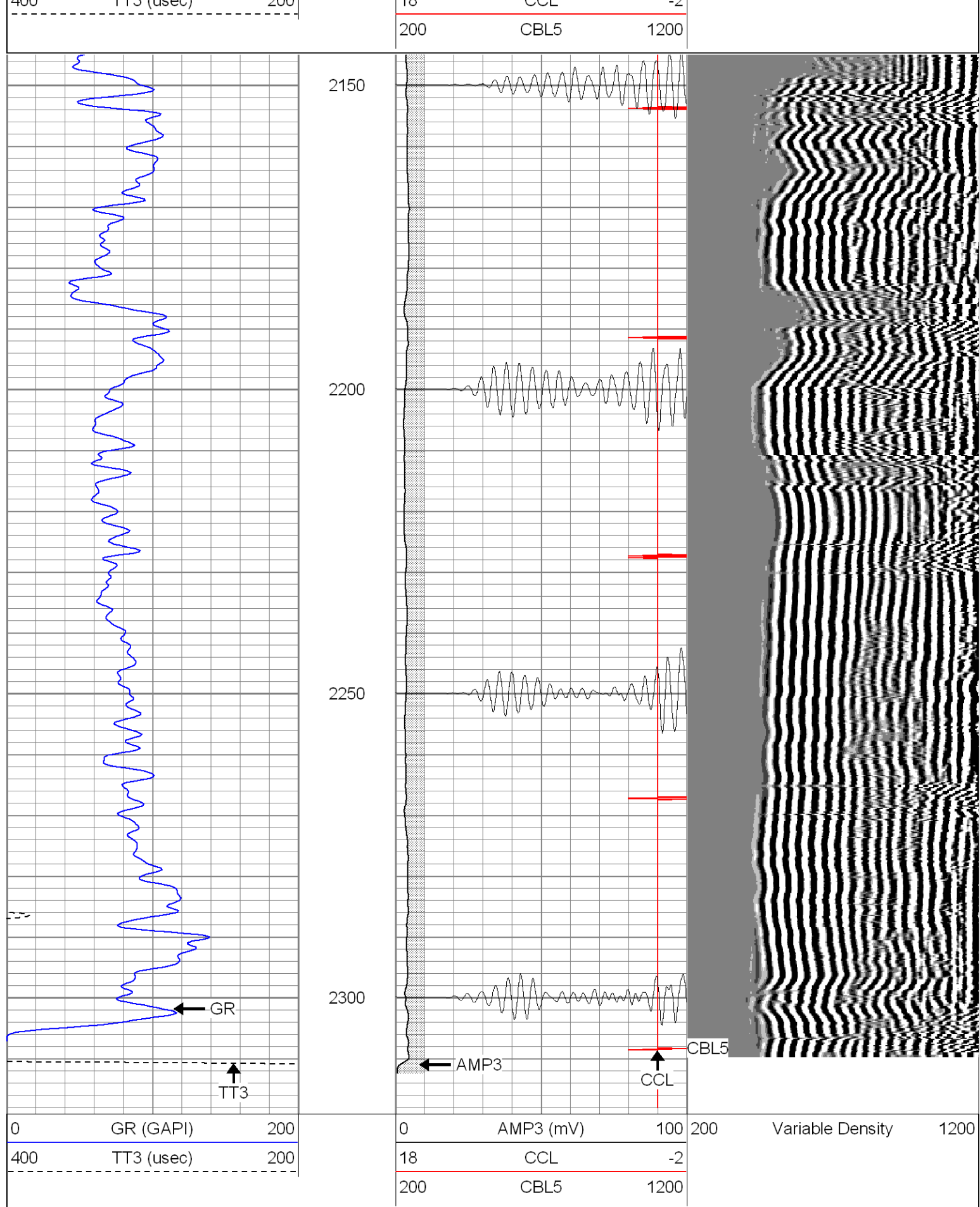
SUPERIOR

Black Lick, Pa.
Mercer, Pa.
Wooster, Oh.
Cleveland, Ok.
Trinidad, Co.

Repeat Section

Database File: generalvera31307b.db
 Dataset Pathname: pass1
 Presentation Format: cblrt
 Dataset Creation: Tue Mar 13 10:39:33 2007 by Log Warrior 7.0 STD Cas
 Charted by: Depth in Feet scaled 1:240





Cement Bond Log Calibration Report

Serial Number:

Titan5

Tool Model:

2

Profile:

May 11 05:10:50.50 2007

Performed: Mon Mar 05 10:53:58 2007

Depth: 210.983 ft
Casing Diameter: 5.5 in

3' Spacing 5' Spacing

Signal Zero: 0 0 mV
Calibrated Amplitude: 85 85 mV
Reading at Signal Zero: -0.01 0.00866699 V
Reading in Free Pipe: 1.2 1.2 V

Gain: 70.2479 71.3486
Offset: 0.702479 -0.618378

Gamma Ray Calibration Report

Serial Number: Titan5
Tool Model: T2
Performed: Thu Mar 08 09:00:44 2007

Calibrator Value: 1.0 GAPI

Background Reading: 0.0 cps
Calibrator Reading: 1.0 cps

Sensitivity: 1.2500 GAPI/cps