

August 2, 2011

Colorado Oil and Gas Conservation Commission
The Chancery Building
1120 Lincoln Street, Suite 801
Denver, CO 80203

Attn: Mr. David Neslin, Director

RE: NORTHRUP C08-73HN
Niobrara New Drill
Township 4 North, Range 64 West, 6th P.M.
Section 8: NW/4NE/4: 289' FNL & 1831' FEL (Surface Location)
Section 8: NE/4NE/4: 888' FNL & 1312' FEL (Beginning of Lateral)
Section 8: SW/4SW/4: 1200' FSL & 1320' FEL (Bottom Hole Location)
Weld County, Colorado

Mr. Neslin:

Noble Energy, Inc. ("NEI") is planning to drill the captioned boundary well in accordance with the provisions of COGCC Rule 318A.e.

NEI's proposed wellbore spacing unit consists of the E/2 Sec.8, T4N, R64W, creating a 320-acre wellbore spacing unit for the Niobrara formation. NEI is the only owner within the proposed wellbore spacing unit, therefore NEI hereby attests that no notice letters are required under COGCC Rule 318A.e.(6).

Enclosed are copies of the following documents to assist you in your review and approval of NEI's proposed APD for the captioned well:

- Map illustrating the proposed wellbore spacing unit and number of Codell/Niobrara/J Sand wells located within the existing 160-acre governmental quarter section(s) (SE/4) to be less than eight (8) in accordance with COGCC Rule 318A.f.
- Plat illustrating proposed wellbore spacing unit on existing location plat.

Thank you for your attention to the enclosed. NEI respectfully requests that the COGCC review the enclosed information and approve the Application for Permit to Drill the captioned well.

Sincerely,



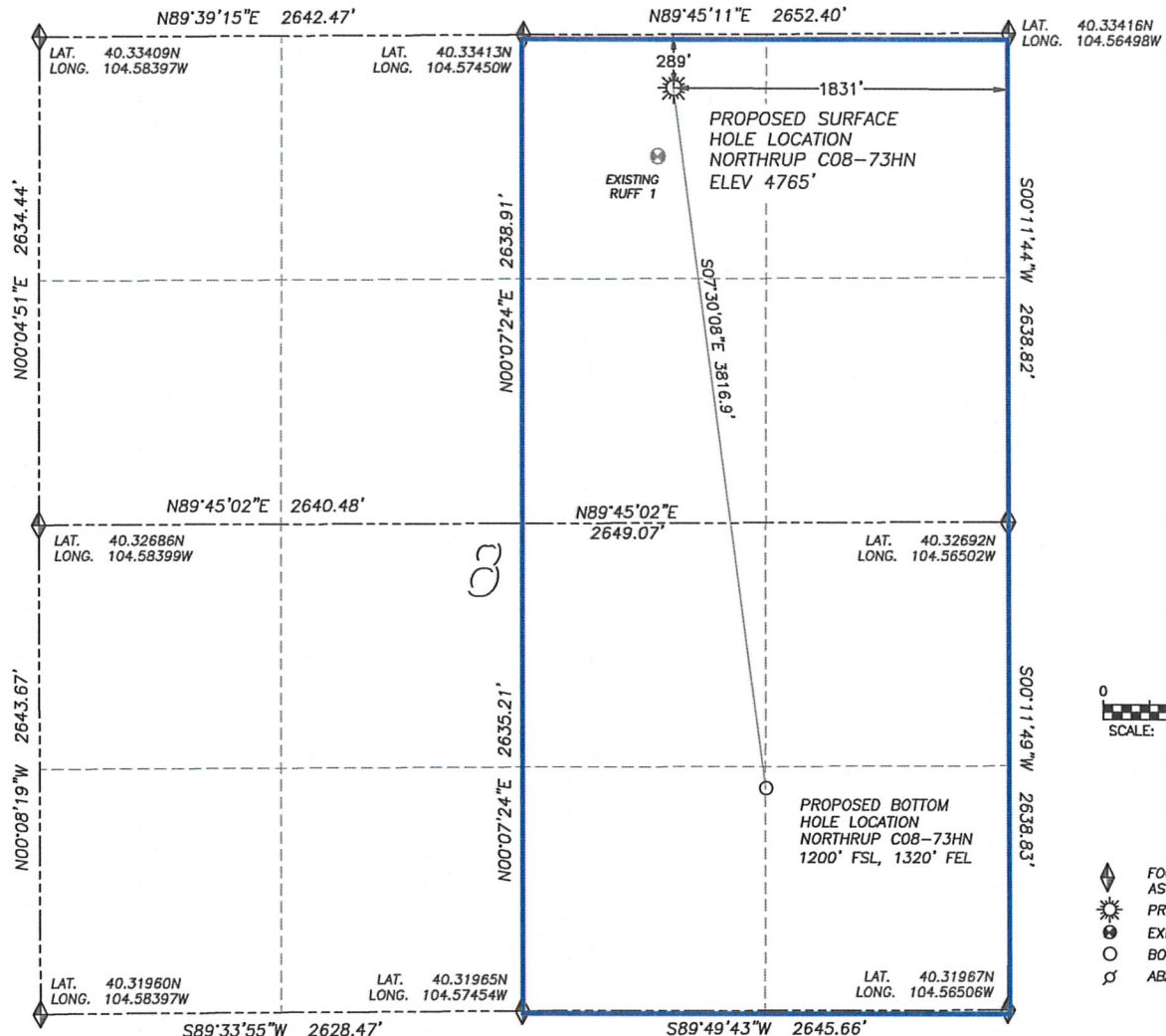
Jan Kajiware
Regulatory Analyst III
Noble Energy Inc.

[illegible]

The governmental ¼ Section has less than 8 bottom hole wells producing from the Codell, Niobrara, and J-Sand formations.

WELL LOCATION CERTIFICATE NORTHROP C08-73HN

SECTION 8, TOWNSHIP 4 NORTH, RANGE 64 WEST OF THE 6TH PRINCIPAL MERIDIAN

**NAD 83 LATITUDE AND LONGITUDE**

NORTHROP C08-73HN SURFACE HOLE:

LATITUDE: N40.33334°

LONGITUDE: W104.57156°

ELEVATION: 4765'

FOOTAGE: 289' FNL, 1831' FEL

PDOP: 1.7

QTR/QTR: NW4/NE4

PROP LINE: 182'± EAST

BOTTOM HOLE:

LATITUDE: N40.32296°

LONGITUDE: W104.56977°

FOOTAGE: 1200' FSL, 1320' FEL

NEAREST EXISTING WELL:

RUFF 1 SURFACE HOLE

LATITUDE: N40.33233°

LONGITUDE: W104.57187°

ELEVATION: 4763'

380' SOUTHWEST

IN ACCORDANCE WITH A REQUEST FROM NATE McCORKELL OF NOBLE ENERGY INC., DALEY LAND SURVEYING, INC. HAS DETERMINED THE SURFACE LOCATION OF THE NORTHROP C08-73HN WELL TO BE 289' FNL, 1831' FEL, AS MEASURED AT NINETY (90) DEGREES FROM THE SECTION LINES OF SECTION 8, TOWNSHIP 4 NORTH, RANGE 64 WEST OF THE 6TH PRINCIPAL MERIDIAN, WELD COUNTY, COLORADO. THE BOTTOM HOLE LOCATION, PROVIDED BY THE CLIENT, IS TO BE 1200' FSL, 1320' FEL.

I HEREBY CERTIFY THAT THIS WELL LOCATION CERTIFICATE WAS PREPARED BY ME OR UNDER MY DIRECT SUPERVISION, THAT THE WORK WAS COMPLETED ON 5/19/2011 FOR AND ON BEHALF OF NOBLE ENERGY, INC., AND THAT THIS MAP DOES NOT REPRESENT A BOUNDARY SURVEY, IT IS NOT A LAND SURVEY PLAT OR AN IMPROVEMENT SURVEY PLAT AND IT IS NOT TO BE RELIED UPON FOR THE ESTABLISHMENT OF FENCE, BUILDING OR OTHER FUTURE IMPROVEMENT LINES.

NOTES:

- 1) BEARINGS FOR THIS MAP ARE ASSUMED AND BASED UPON GPS OBSERVATIONS MADE BETWEEN MONUMENTS LOCATED AT THE NORTHEAST CORNER AND NORTH QUARTER CORNER OF SECTION 8, T.4N., R.64W.
- 2) HORIZONTAL DATUM IS NAD83.
- 3) VERTICAL DATUM IS NAVD88. ELEVATIONS ARE DERIVED FROM GPS OBSERVATIONS PROCESSED THROUGH OPUS, UTILIZING THE GEOID03 MODEL.
- 4) SEE LOCATION DRAWING FOR VISIBLE IMPROVEMENTS WITHIN 600' OF PROPOSED SURFACE HOLE LOCATION.
- 5) SURFACE USE: PASTURE.

NOTICE: According to Colorado law you MUST commence any legal action based upon any defect in this W.L.C. within three years after you first discover such defect. In no event may any action based upon any such defect in this W.L.C. be commenced more than ten years from the date of the certification shown hereon.

FOR AND ON BEHALF OF
DALEY LAND SURVEYING INC.,
Robert Daley, PLS 35597